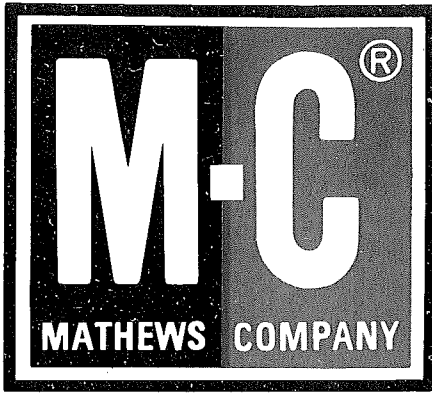


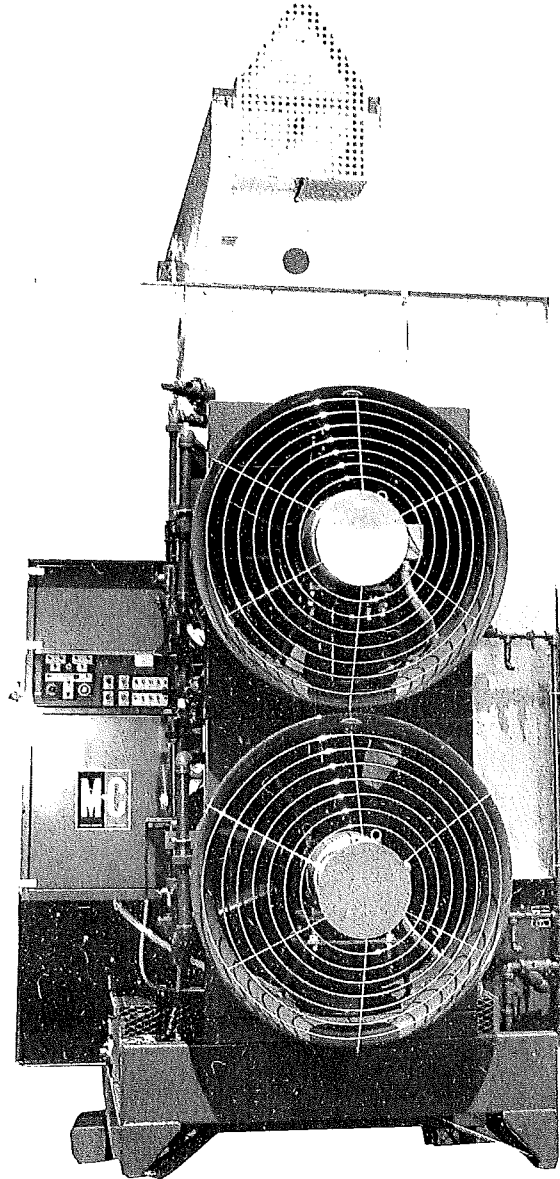
\$5.00



**Model 670, 690 & 970**  
(EM and EMS)

**Continuous Flow  
Grain Dryers**

(Starting w/Serial No. 52698)



# PARTS CATALOG

Form No. D 307 , October 1993

**Mathews Company /** 500 Industrial Ave., Crystal Lake, IL 60012, U.S.A.  
815/459-2210 FAX 815/459-5889

# CONTENTS

	Page
<b>Introduction</b>	
Parts Ordering Instructions .....	1
Model and Serial Number Location .....	1
Capscrew Grade Identification .....	1
<b>Parts</b>	
Air Pressure Switch .....	36
Air Stabilizer .....	19
Air Straighteners .....	18
Augers	
Level .....	34
Unload .....	2
Belts	
Level Auger .....	34
Unload Auger .....	16
Bin Level Indicator .....	36
Burner .....	19
Burner Target .....	18
Cabinets	
115 V Control Cabinet - 670, 690 & 970 .....	28
Circuit Breakers - Level Auger, Unload Auger and Fan Motor .....	38-39
Coils	
Magnetic Starter - 115V .....	38-39
1¼" Solenoid Valve .....	24-25
½" Solenoid Valve .....	23
Contacts - For Magnetic Starters .....	40
Control Panel Lights, Switches and Controls .....	31
Decal Kit - All Models .....	42
Electrical Components in 115V Control Cabinet .....	30
Electrode .....	22
End Panels	
670 .....	10
690 .....	15
970 .....	12
Fans .....	20
Fan Motors .....	20
Fan Motor Mount .....	20
Fan Orifice .....	21
Fan Orifice Supports .....	21
Flame Sensing Probe .....	22
Floor Panels - 670 .....	10
970 .....	12
Guards	
Fan .....	21
Level Auger Motor .....	32
SCR Drive .....	17

Continued on next page.

	<b>Page</b>
High Limit Switch .....	<b>36</b>
Hopper .....	<b>32</b>
Ignition Board .....	<b>30</b>
Ignition Wires .....	<b>22</b>
Interlocks - For Magnetic Starters .....	<b>40</b>
Jumper Straps - For Magnetic Starters .....	<b>40</b>
Kits - Field Installed .....	<b>42</b>
Level Auger .....	<b>34</b>
Belts .....	<b>32</b>
Motor .....	<b>32</b>
Motor Mount .....	<b>32</b>
Switch Assembly (Bin Level Indicator) .....	<b>36</b>
Lights, Control Panel .....	<b>31</b>
LP Gas Liquid Line Piping .....	<b>23</b>
LP Gas Manifold and Piping .....	<b>24</b>
Magnetic Starters .....	<b>38-39</b>
Manifolds	
LP Gas .....	<b>24</b>
Natural Gas .....	<b>25</b>
Mercury Switch .....	<b>4</b>
Metering Rolls .....	<b>2</b>
Mixing Chamber .....	<b>18</b>
Modulating Valves .....	<b>26</b>
Modulating Valve Power Elements .....	<b>26</b>
Modulating Valve Repair Kits .....	<b>26</b>
Moisture Control	
Potentiometer .....	<b>31</b>
Moisture Control .....	<b>30</b>
Thermistor Sensor .....	<b>36</b>
Motors .....	
Natural Gas Manifold and Piping .....	<b>25</b>
Orifice Liners .....	<b>18</b>
Portabilities .....	<b>41</b>
Pressure Gauge (Gas) .....	<b>24-25</b>
Pressure Regulator (LP Gas) .....	<b>26</b>
Pressure Regulator (LP Gas) Repair Kit .....	<b>26</b>
Relays .....	<b>30</b>
Relief Valve - LP Gas .....	<b>23</b>
SCR Drive Unload System	
Control Board .....	<b>30</b>
Motor and Gear Box .....	<b>16</b>
Potentiometer .....	<b>31</b>

	Page
Screens	
Base Screens .....	7
Upper Screens .....	8
Solenoid Valves	
1¼" - LP Gas and Natural Gas .....	24-25
½" - LP Gas .....	23
Solenoid Valve Repair Kits .....	26
Switches, Control Panel .....	31
Tank Valve - LP Gas .....	
Terminal Tracks .....	30
Thermistor .....	36
Thermometer .....	28
Timers	
10 Second - Ignition .....	30
.1 to 8 Minute Adjustable - Level Auger .....	30
60 Minute Adjustable - Low Grain Level .....	30
Transformers .....	28
Unload Auger	
Auger .....	2
Belts .....	16
Extension Kit (2 ft.) .....	37
Motor .....	16
Pans .....	16
Vaporizer Coil - LP Gas .....	19

## NOTES

---

---

---

---

---

---

---

---

---

---

---

---

---

---

---

---

---

---

---

---

---

---

---

---

# INTRODUCTION

## Parts Ordering Instructions

1. Order parts from your local M-C Dealer or distributor.
2. Always furnish the Grain Dryer model and serial number. This information is stamped on the serial number plate.
3. When ordering parts be sure to furnish the part number, description and quantity required.

**NOTE:** Attaching hardware is listed (but not included) with the main part. It must be ordered separately.

4. Inspect all shipments upon receipt. If any packages and/or boxes are missing, or parts are damaged, file a claim with the carrier immediately. Failure to do so may void a claim. Check the shipment against the packing list carefully. Report any shortages to the shipper immediately.
5. Do not return any parts to the Mathews Company without a "Return Goods Authorization" from the factory. All return parts shipments must be shipped prepaid (COD shipments will not be accepted). Shipments must also include the following:
  - A. A letter of explanation including the "Return Goods Authorization Number," your name and address.
  - B. A list of all parts being returned. List must include part numbers, description, quantity, and original invoice number.

## Model and Serial Number Location

The model and serial number of your Grain Dryer are stamped on a plate located on the left front end

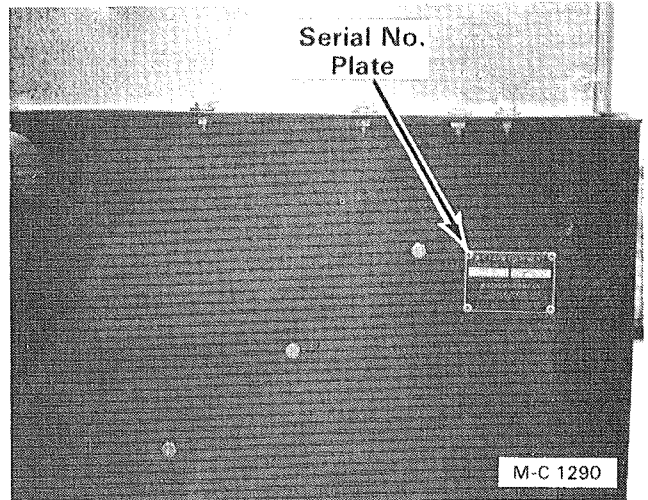


Figure 1

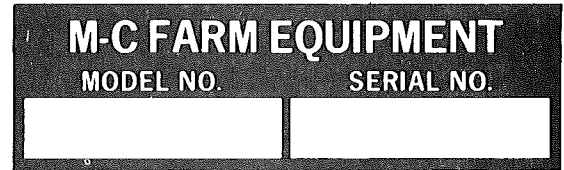


Figure 2

panel, see Figure 1. On late production dryers, the plate is on the dryer front base panel just below the location shown in Figure 1. Record the model and serial number in the blank spaces in Figure 2.

## Capscrew Grade Identification

There are four grades of hex-head capscrews. Grade 1 and 2 are common capscrews, grade 5 and 8 are used when greater strength is required. Each grade can be identified by the marking on the head of the capscrew, see chart below.

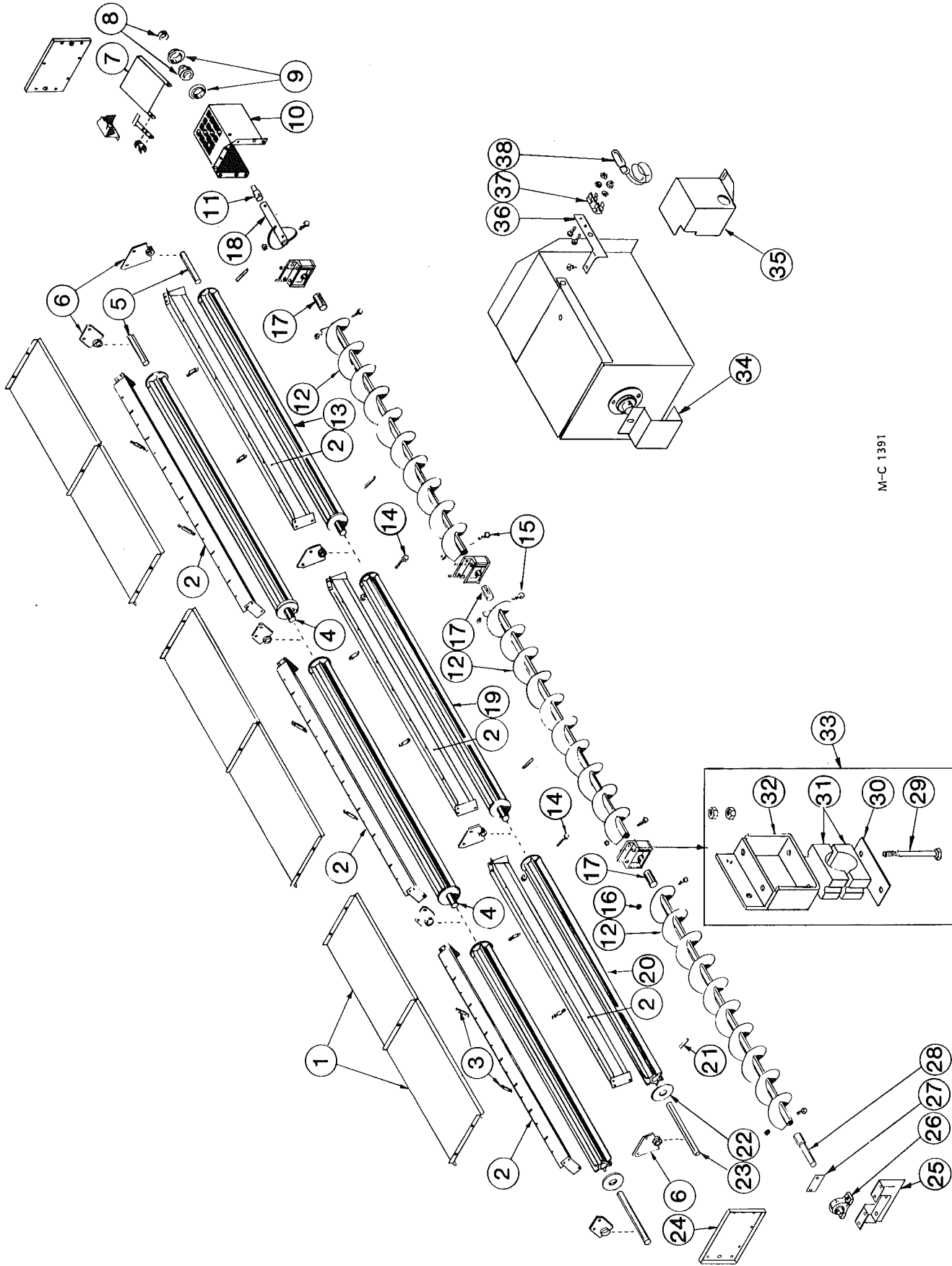
When replacing capscrews, be sure to use the correct size and grade. If a specific grade is not shown as part of the description, the capscrew is a grade 1 or 2.

### CAPSCREW GRADE IDENTIFICATION CHART

S.A.E. Grade	Description	Capscrew Head Marking*
1	WILL HAVE A PLAIN HEAD - NO RADIAL LINES	
2	Low or Medium Carbon Steel Not Heat Treated	
5	WILL HAVE 3 RADIAL LINES Quenched and Tempered Medium Carbon Steel	
8	WILL HAVE 6 RADIAL LINES Quenched and Tempered Special Carbon or Alloy Steel	

\*The center marking identifies the capscrew manufacturer.

# Metering Rolls and Unload Auger



M-C 1391

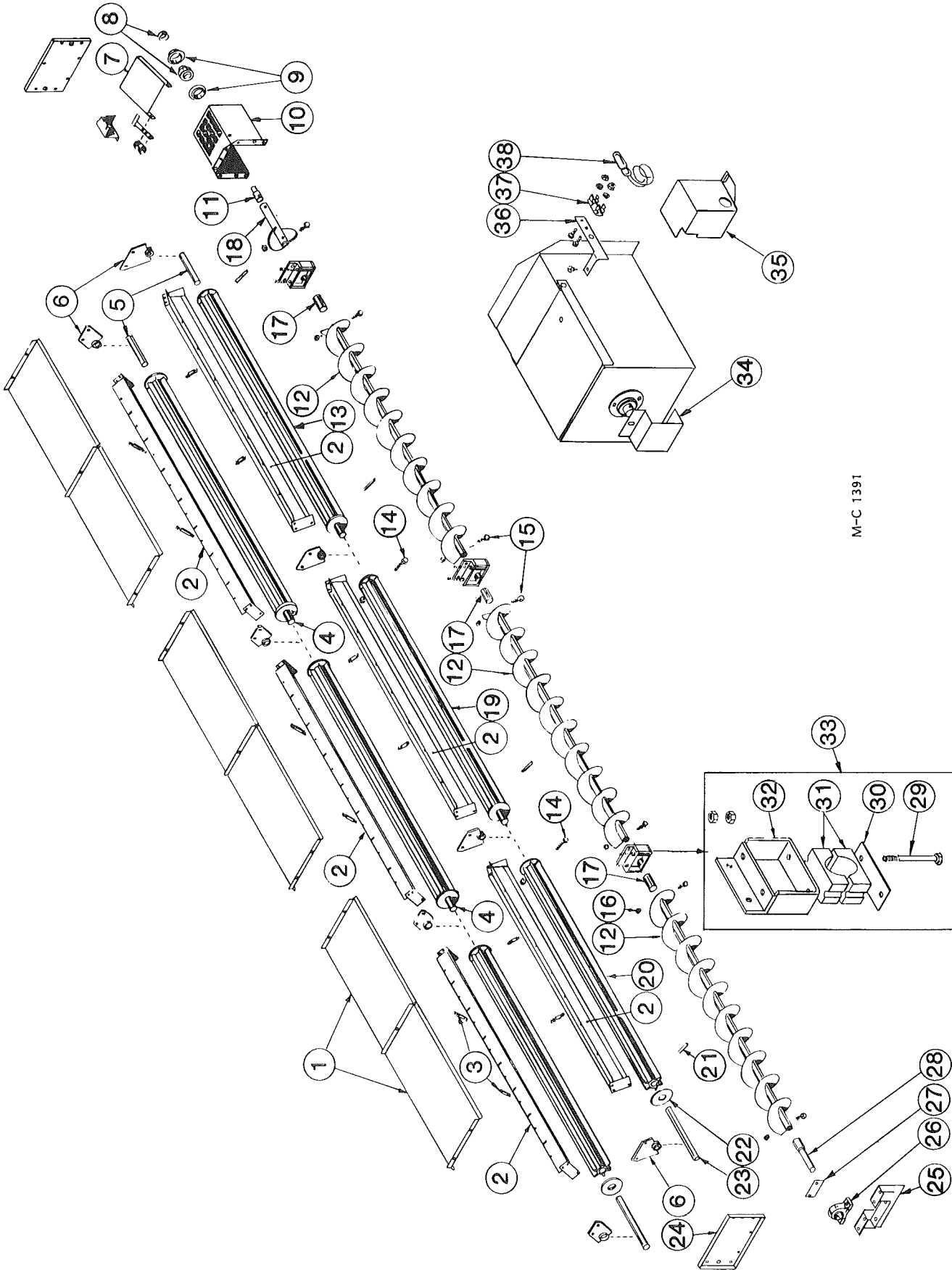
## Metering Rolls and Unload Auger

Ref.	Part No.	Qty. (16')	Qty. (24')	Description
1	128 2890	4	6	Unload Auger Cover
	001 8111	8	12	5/16-18 Clip Nut
	000 8106	12	21	5/16-18 x 3/4" Capscrew
	000 8173	12	21	5/16" Flatwasher
	000 8169	4	9	5/16-18 Flanged Locknut
2	128 0225	4	6	Inner Perf. Mt. Weld
	000 8106	18	24	5/16-18 x 3/4" Capscrew
	000 8169	18	24	5/16-18 Flanged Locknut
3	128 8958	8	12	Support Rod (3/8" x 4 3/4")
	000 8173	8	12	5/16" Flatwasher
	000 8168	24	36	3/8-16 Flanged Locknut
4	121 5043	2	4	Rear & Center Metering Roll Shaft-1 1/4x7" (press fit in metering roll)
5	121 5042	2	2	Rear Metering Roll Stub Shaft - 1 1/4"x5" (press fit in metering roll)
6	128 1063	6	8	Metering Roll Brg. w/Bronze Bushing
	000 8106	12	16	5/16-18 x 3/4" Capscrew
	000 8169	12	16	5/16-18 Flanged Locknut
7	128 4712	1	1	Over Load Door
	000 8119	2	2	3/8-16 x 3/4" Capscrew
	000 8205	2	2	3/8-16 Top Lock Flanged Nut
8	001 6003	1	1	1 1/4" Bearing w/Lock Collar
9	001 6004	2	2	1 1/4" Bearing Flangette
	000 8121	3	3	3/8-16 x 1" Capscrew
	000 8168	3	3	3/8-16 Flanged Locknut
10	128 0242	1	1	Unload Auger Discharge (Front Unload - See note 1)
	000 8106	9	9	5/16-18 x 3/4" Capscrew
	000 8169	9	9	5/16-18 Flanged Locknut
11	124 5611	1	1	Unload Auger Output Shaft (Front Unload - See note 1)
12	128 0244	2	3	Rear Unload Auger (10") (Front Unload - See note 1)
13	121 1082	2	2	Rear Metering Roll Ass'y. (incl. shafts)
14	000 8114	2	4	5/16-18 x 2 1/2" Capscrew
	000 8222	2	4	5/16" Lockwasher
	000 8159	2	4	5/16-18 Hex Nut
15	000 8229	8	12	3/8-16 x 2 3/4" Capscrew-Grd. 5
16	000 8205	8	12	Top-Lock Flange Nut
17	128 5618	2	3	Unload Auger Link
18	128 0309	1	1	Standard Auger Weld
19	121 1083	—	2	Center Metering Roll Ass'y. (incl. shaft)
20	128 1254	2	2	Front Metering Roll Ass'y. (incl. shaft)
21	000 8259	3	4	Roll Pin 5/16" x 1 3/4"
22	121 4438	AR	AR	Metering Roll Washer-11 Gauge
	128 4970	AR	AR	Metering Roll Washer-16 Gauge
23	128 5042	2	2	Front Metering Roll Shaft - 1 1/4" x 13 1/4" (press fit in metering roll)
24	128 2894	2	2	Base Panel Access Door (17 1/2"x10 1/2")
25	001 8284	14	14	5/16-12 x 1 1/2" Self Tapping Screw
	128 0247	1	1	Unload Auger Front Plate
	000 8119	4	4	3/8-16 x 3/4" Capscrew
	000 8168	4	4	3/8-16 Flanged Locknut

**NOTE 1 : Dryers w/Front Unload** - ref. 10, use 127 4431 rear cover plate, ref. 11, use 127 5999 output shaft and ref. 12, use 128 0243 auger.

Continued on next page

# Metering Rolls and Unload Auger



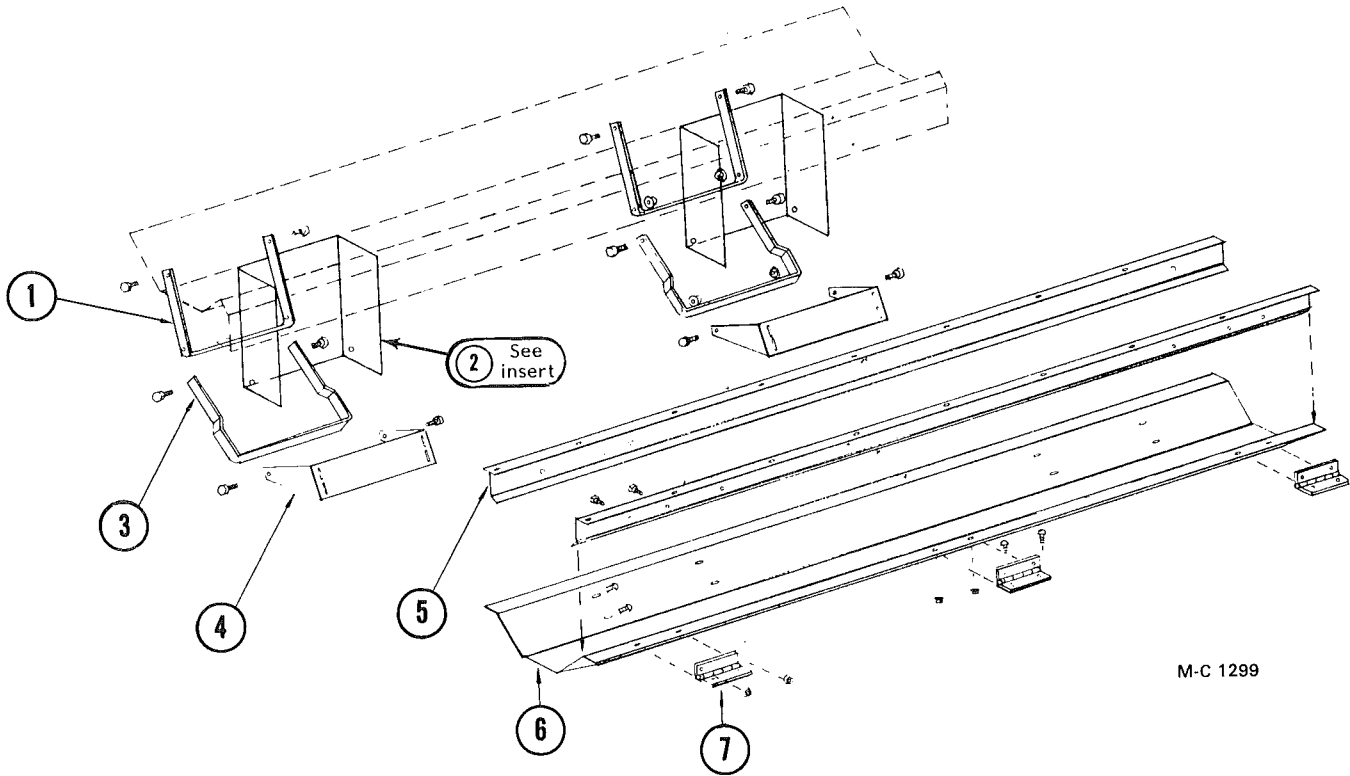
M-C 1391



## Metering Rolls and Unload Auger

Ref.	Part No.	Qty. (16')	Qty. (24')	Description
26	001 6011	1	1	1-7/16" Bore Pillow Block Brg.
	001 8299	2	2	1/2-13 x 1 3/4" Capscrew-Grd. 8 w/Nylock
	001 8257	2	2	1/2" SAE Flatwasher
	000 8163	2	2	1/2-13 Hex Nut
27	128 3008	1	1	Front Seal Plate
	000 8184	4	4	8-18 x 1/2" Sheet Metal Screw
28	124 5610	1	1	Unload Auger Input Shaft
29	001 8168	4	6	1/2-13 x 4 1/2" Capscrew - Grd. 5
	000 8180	4	6	1/2" Lockwasher
	000 8163	8	12	1/2-13 Hex Nut
30	128 0285	2	3	Unload Auger Support Weld
31	128 6020	2	3	Wood Brg. 1-5/16" (2 Halves)
32	128 0287	2	3	Unload Auger Brg. Brkt.
	000 8137	4	6	1/2-13 x 1 1/4" Capscrew - Grd. 5
	000 8180	4	6	1/2" Lockwasher
	000 8163	4	6	1/2-13 Hex Nut
33	122 1007	2	3	Unload Auger Brg. Kit (Incl. ref. 30 thru 33 in quantities reqd. for one brg.)
34	128 3011	1	1	Stub Shaft Guard
35	128 4896	1	1	Shut-Off Switch Cover
	001 8284	2	2	5/16-12 x 1/2" Self-Tapping Screw
36	128 2937	1	1	Bulb Mount
37	120 6801	1	1	Mercury Switch Mt. Clip
	000 8282	2	2	6-32 x 1/4" Machine Screw
	000 8185	2	2	6-32 Flanged Locknut
38	120 6800	1	1	Mercury Switch

# Unload Auger Pans

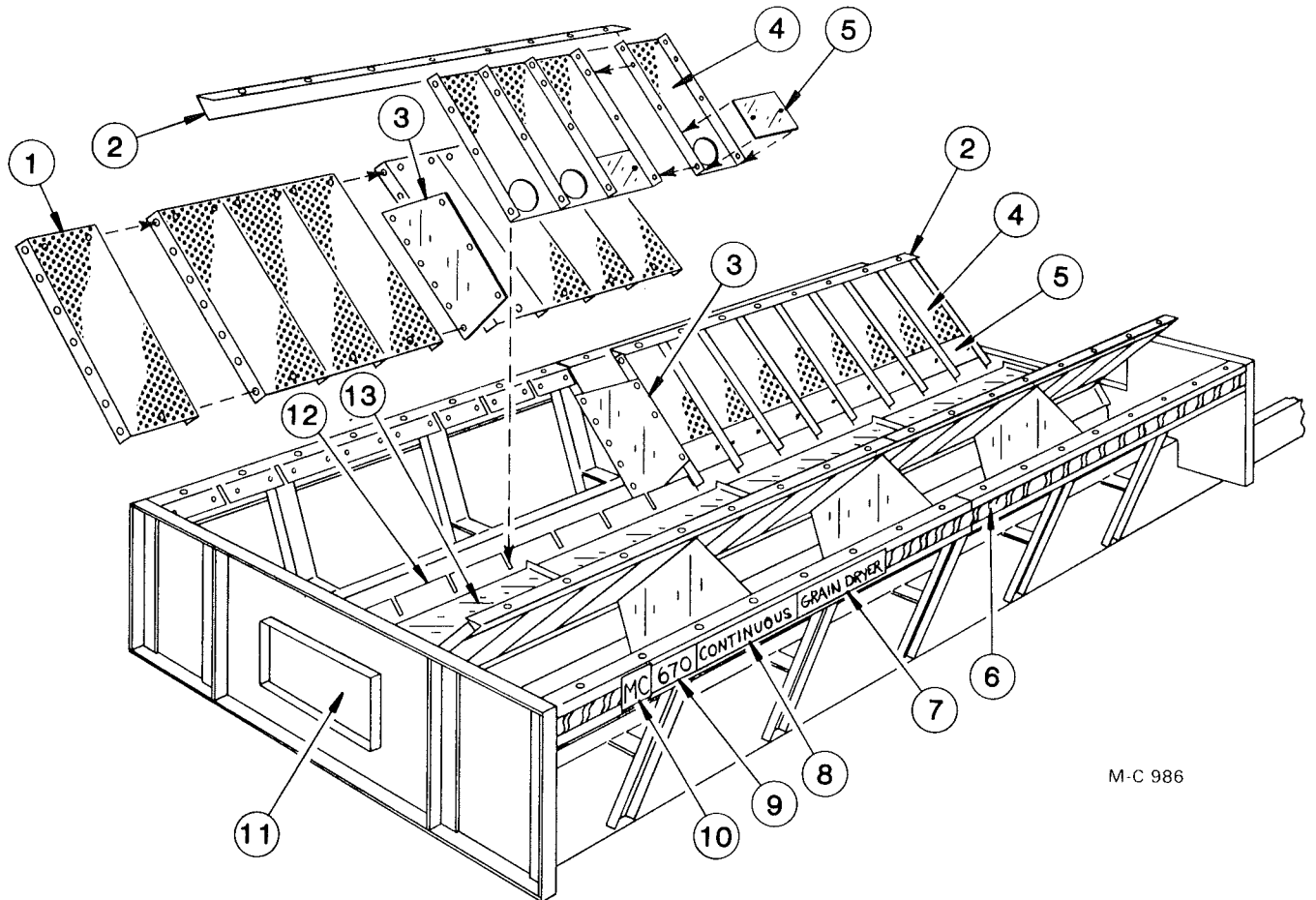


M-C 1299

2 WARNING DECAL  
MOUNTS ON SIDE  
OF BRACKET

Ref.	Part No.	Qty. (16')	Qty. (24')	Description
1	128 2029	4	6	Auger Dump Arm - Upper
2	128 8355	4	6	Warning Decal (not shown)
3	128 2030	4	6	Auger Dump Arm - Lower
4	128 2751	4	6	Bottom Link Pivot Base
5	127 2673	4	6	Pan Hinge Angle
6	128 2752	2	3	Auger Dump Pan
7	128 8957	6	9	Hinge

## Base Screens

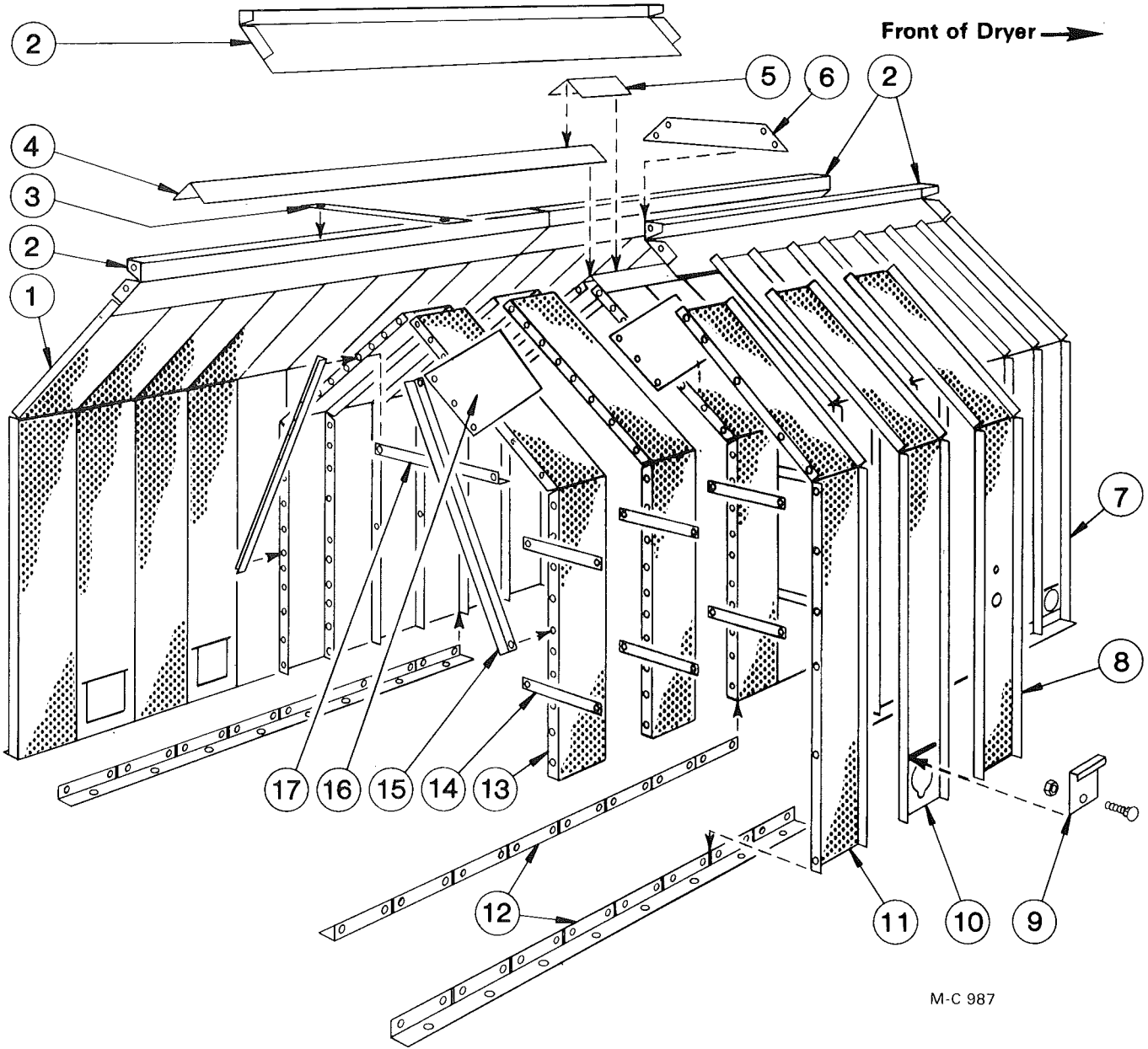


M-C 986

Ref. Part No.	Qty. (16')	Qty. (24')	Description	Ref. Part No.	Qty. (16')	Qty. (24')	Description
1 --- ---	—	—	Lower Outer Screen	10 128 8300	2	2	M-C Decal - 5" x 4-9/16"
127 2945	32	48	<b>Small Seed (Galv.)</b>	11 128 2894	1	1	Base Panel Access Door
2 128 2739	4	6	Lower Screen Mt. Angle	001 8284	7	7	5/16 - 12 x 1/2" Self Tapping Screw
3 128 2855	6	10	Lower Screen Stiffener	12 128 0225	4	6	Inner Perf. Mt. Weld
4 --- ---	—	—	Lower Inner Screen w/Clean-Out (See note 1)	000 8106	18	24	5/16 - 18 x 3/4" Capscrew
128 2994	32	48	<b>Galvanized (Std.)</b>	000 8169	18	24	5/16 - 18 Flanged Locknut
127 2960	32	48	<b>Small Seed (Galv.)</b>	13 128 2890	4	6	Unload Auger Cover
5 128 2995	32	48	Lower Inner Screen Cover	001 8111	8	12	5/16 - 18 Clip Nut
6 128 8310	24 ft.	39 ft.	Red & Yellow Stripe Decal - 2 1/2"	000 8106	12	21	5/16 - 18 x 3/4" Capscrew
7 128 8309	2	2	"Grain Dryer" Decal	000 8173	12	21	5/16" Flatwasher
8 128 8308	2	2	"Continuous" Decal	000 8169	4	9	5/16 - 18 Flanged Locknut
9 128 8361	2	—	"670" Base Decal				
128 8367	2	—	"690" Base Decal				
128 8362	—	2	"970" Base Decal				

**NOTE 1:** Screen w/o clean-out is no longer available. Order Galvanized (Std.) Screen Ass'y. 124 1032 or Small Seed (Galv.) Screen Ass'y. 124 1033. Assemblies include ref. 4 screen, ref. 5 cover and cover attaching hardware.

# Upper Screens



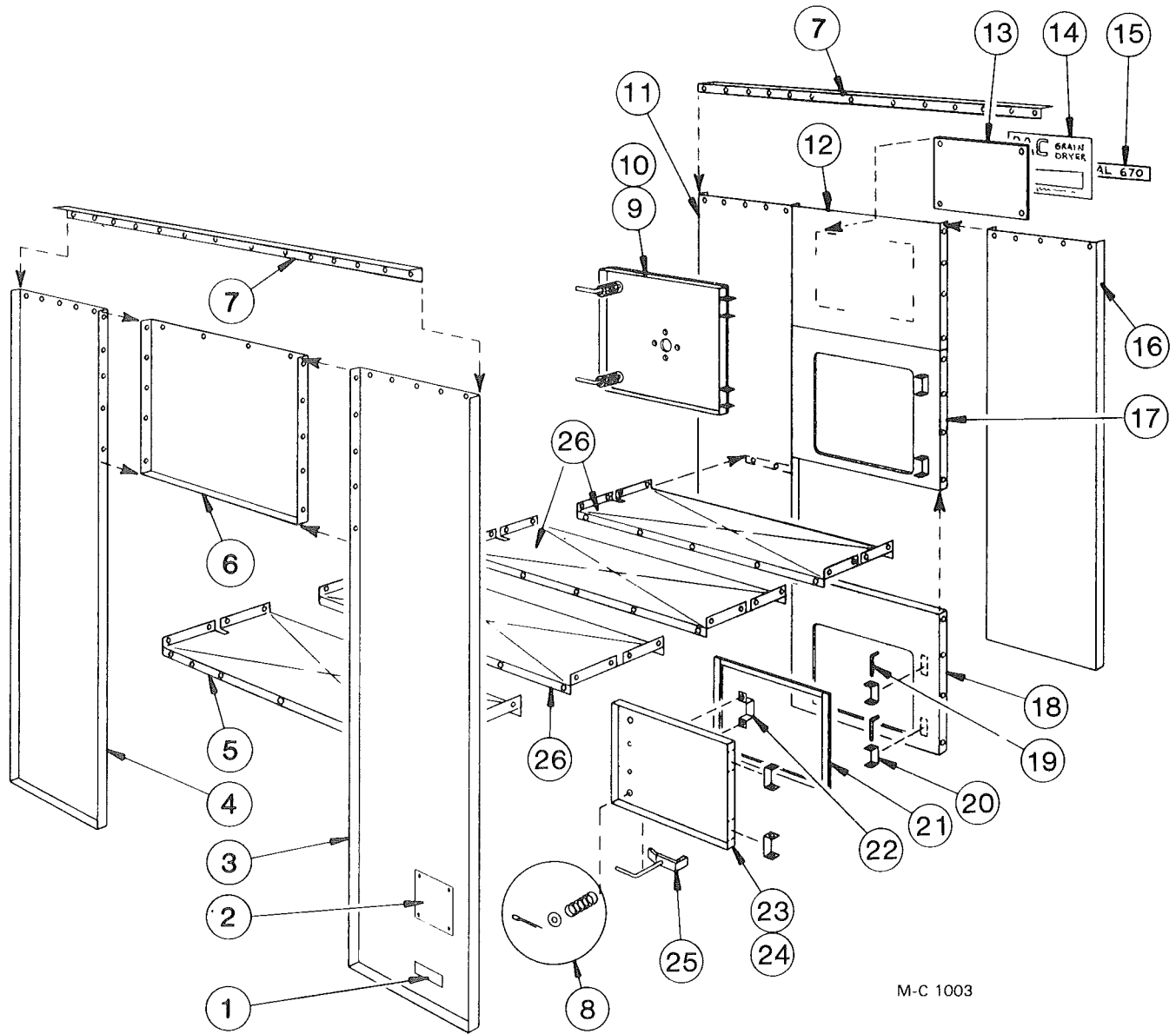
M-C 987

## Upper Screens

Ref.	Part No.	Qty. (16')	Qty. (24')	Description
1	----	-	-	Outer End Screen w/o Quick Drain
	021 2946	2	2	<b>Galvanized (Std.)</b>
	127 2967	2	2	<b>Small Seed (Galv.)</b>
	123 5213	2	2	<b>Aluminum</b>
2	129 2832	4	6	Hopper Joiner Angle
3	129 2947	2	3	Stiffener Strap
4	021 2950	2	3	Hopper Cap
5	128 3075	1	2	Seal Angle
6	129 2831	1	2	Joiner Plate
7	----	-	-	Outer End Screen w/Quick Drain
	128 3002	2	2	<b>Galvanized (Std.)</b>
	127 2963	2	2	<b>Small Seed (Galv.)</b>
	123 5210	2	2	<b>Aluminum</b>
8	----	-	-	Moisture Control Screen
	021 2947	1	1	<b>Galvanized (Std.)</b>
	127 2966	1	1	<b>Small Seed (Galv.)</b>
	123 5214	1	1	<b>Aluminum</b>
9	----	-	-	Quick Drain Door
	127 2950	16	24	<b>Galvanized (Std.)</b>
	127 2974	16	24	<b>Small Seed (Galv.)</b>
	001 8269	16	24	3/8 - 16 x 3/4" Carriage Bolt
	000 8168	16	24	3/8 - 16 Flanged Locknut
10	----	-	-	Outer Screen w/Quick Drain
	128 3001	14	22	<b>Galvanized (Std.)</b>
	127 2965	14	22	<b>Small Seed (Galv.)</b>
	123 5212	14	22	<b>Aluminum</b>
11	----	-	-	Outer Screen w/o Quick Drain
	021 2945	13	21	<b>Galvanized (Std.)</b>
	127 2964	13	21	<b>Small Seed (Galv.)</b>
	123 5211	13	21	<b>Aluminum</b>
12	125 2732	8	12	Screen Mount Angle
13	----	-	-	Inner Screen
	021 2949	32	48	<b>Galvanized (Std.)</b>
	127 2968	32	48	<b>Small Seed (Galv.)</b>
14	121 3007	60	92	Stiffener Strap
15	128 2663	14	22	Inner Brace
16	128 3072	14	22	Peak Screen Stiffener
17	021 2600	7	11	Inner Cross Tie

# End Panels and Floor Panels (Model 670)

FRONT



M-C 1003

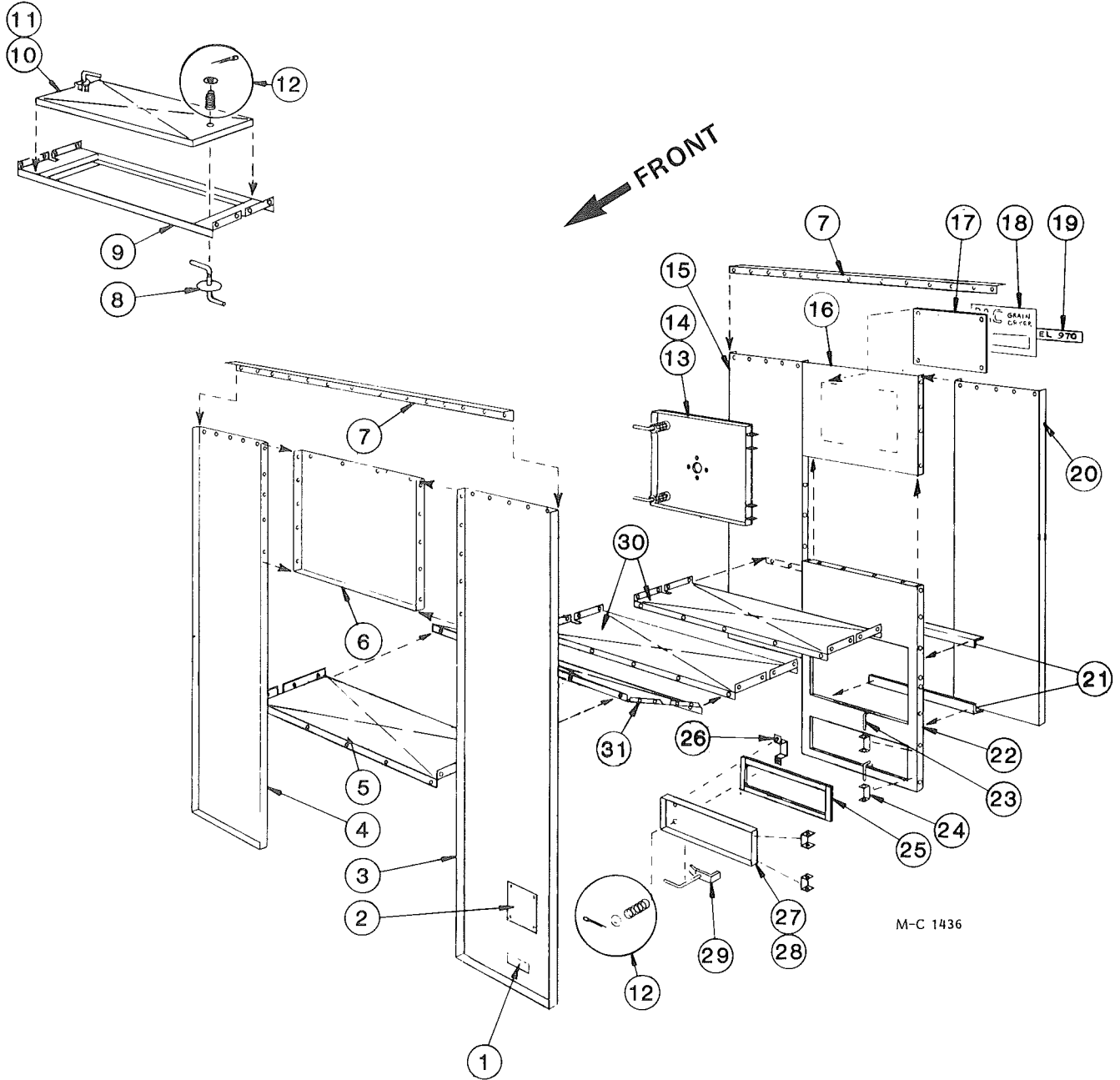
## End Panels and Floor Panels

(Model 670)

Ref.	Part No.	Qty.	Description
1	121 8310	1	"Made in USA" - Decal
2	127 8300	1	"CGA" Dryer Plate (Canada only)
3	124 2836	1	Left Front Panel
4	124 2835	1	Right Front Panel
5	128 2920	1	Front Unit Floor Panel
6	128 2921	1	Panel Above Fan
7	021 2602	2	End Panel to Hopper Joiner Angle
8	001 8256	-	Spring - 5/8" ID x 2"
	000 8174	-	3/8" Flatwasher
	000 8199	-	1/8" x 1" Cotter Pin
9	128 1183	1	Upper Rear Door Ass'y (Incl. ref. 12, 14, 24, 25, 26, & 29)
10	128 2957	1	Upper Rear Door Panel
11	021 2832	1	Right Rear End Panel
12	128 2919	1	Panel Above Door
13	128 2999	1	Decal Mount Plate
14	128 8331	1	Large Decal - See note
15	128 8359	1	670 Model Decal
16	021 2833	1	Left Rear End Panel
17	128 2715	1	Upper Door Frame
18	128 2753	1	Lower Door Frame
19	128 5201	4	Hinge Pin
20	128 2740	8	Door Hinge
	000 8212	16	1/4 - 20 x 1/2" Truss Hd. Screw
	000 8167	16	1/4 - 20 Flanged Locknut
21	121 8966	-	Weather Stripping (Order ft. reqd.)
22	121 2887	2	Door Handle
23	128 1902	1	Lower Rear Door Ass'y (Incl. ref. 12, 24, 25, 26, 28 & 29)
24	128 3006	1	Lower Door Rear Panel
25	121 0414	4	Latch and Handle
26	121 2928	7	Unit Floor Panel

**NOTE:** This decal is imprinted "Model 975." Order one of ref. 15 to be placed over "Model 975."

# Bottom Module End Panels and Floor Panels (Model 970)



M-C 1436



## Bottom Module End Panels and Floor Panels

(Model 970)

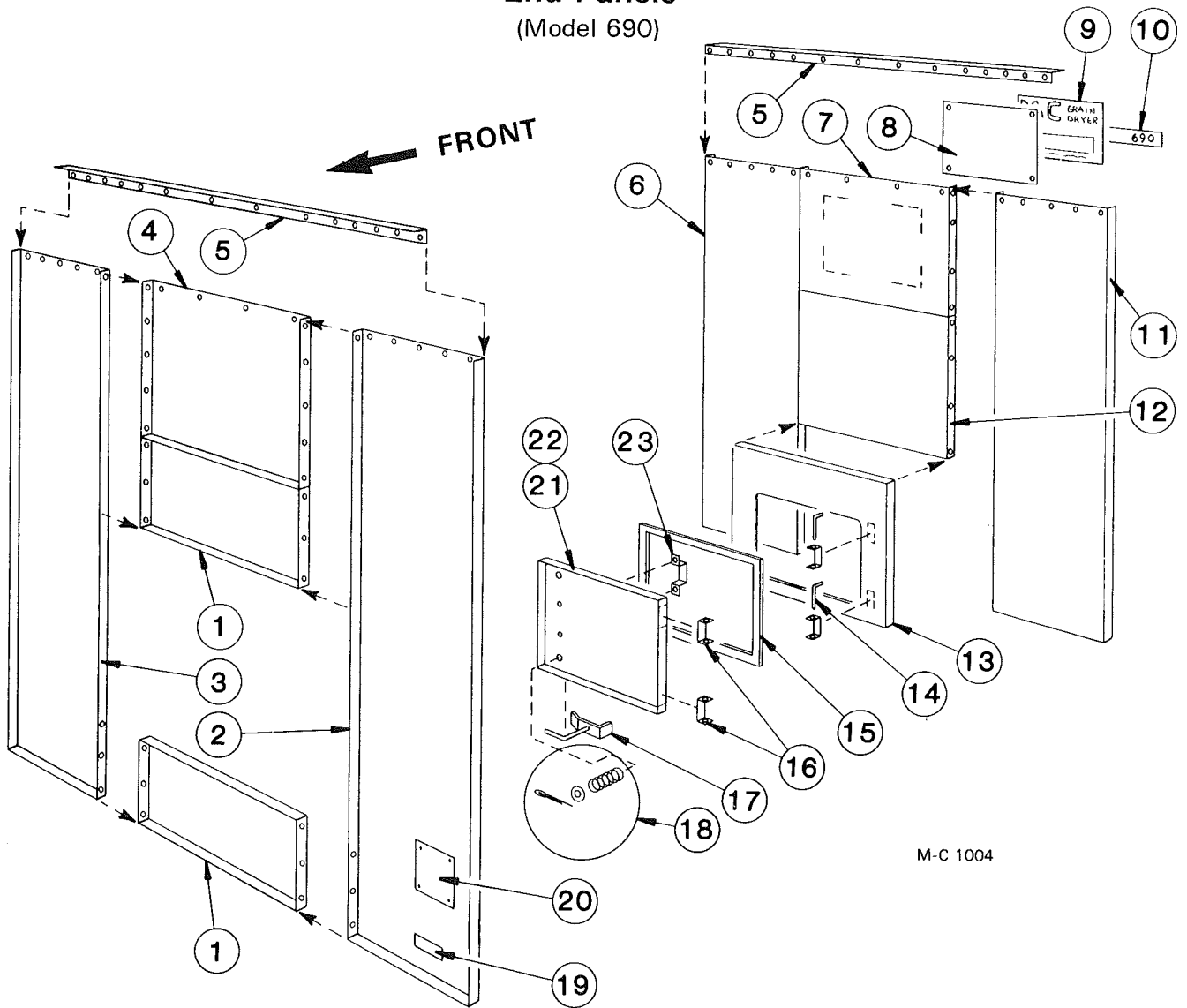
Ref.	Part No.	Qty.	Description
1	121 8310	1	"Made in USA" - Decal
2	127 8300	1	"CGA" Dryer Plate (Canada only)
3	124 2836	1	Left Front Panel
4	124 2835	1	Right Front Panel
5	128 2920	1	Front Unit Floor Panel
6	128 2921	1	Panel Above Fan
7	021 2602	2	End Panel to Hopper Joiner Angle
8	121 0302	2	Latch and Handle
9	121 0299	1	Heat Chamber Door Frame
10	121 1113	1	Heat Chamber Door Assembly (Incl. ref.)
11	121 2970	1	Heat Chamber Door Panel
12	001 8256	-	Spring - 5/8" ID x 2"
	000 8174	-	3/8" Flatwasher
	000 8199	-	1/8" x 1" Cotter Pin
13	128 1183	1	Upper Rear Door Ass'y (Incl. ref. 12, 14, 24, 25, 26, & 29)
14	128 2957	1	Upper Rear Door Panel
15	021 2832	1	Right Rear End Panel
16	128 2919	1	Panel Above Door
17	128 2999	1	Decal Mount Plate
18	128 8331	1	Large Decal - See note
19	128 8360	1	970 Model Decal
20	021 2833	1	Left Rear End Panel
21	124 4463	1	Brace, Rear Door Frame
22	128 2755	1	Dryer Rear Door Frame
23	128 5201	4	Hinge Pin
24	128 2740	8	Door Hinge
25	121 8966	-	Weather Stripping (Order ft. reqd.)
26	121 2887	2	Door Handle
	128 8251		8-18 x 1/2" Sheet Metal Screws
27	128 3009	1	Rear Door
28			Blank
29	121 0414		Latch and Handle
30	121 2928	4	Unit Floor Panel
31	124 2845	10	Slope Unit Floor Panel

**NOTE:** This decal is imprinted "Model 975." Order one of ref. 19 to be placed over "Model 975."

**This page intentionally blank.**

## End Panels

(Model 690)

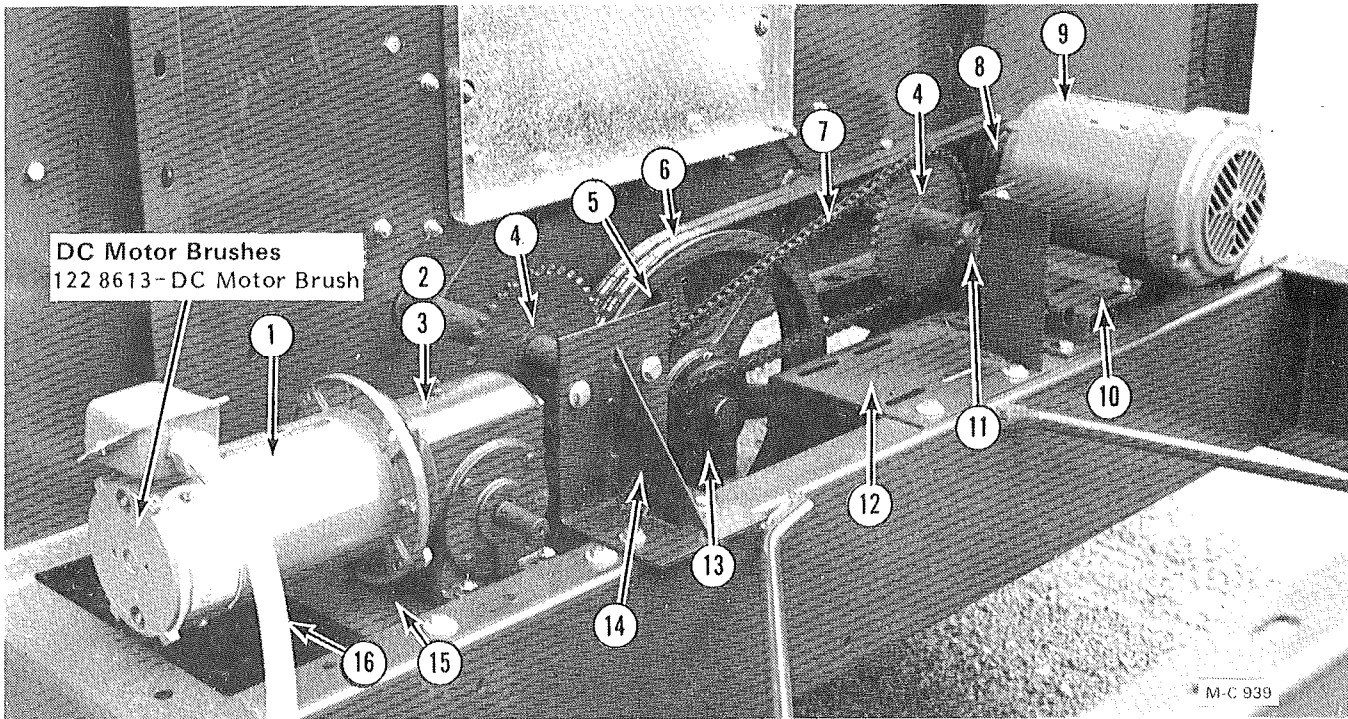


M-C 1004

Ref.	Part No.	Qty.	Description	Ref.	Part No.	Qty.	Description
1	128 4969	2	Spacer Panel	15	121 8966	—	Weather Stripping (Order ft. reqd.)
2	124 2836	1	Left Front Panel	16	128 2740	4	Door Hinge
3	124 2835	1	Right Front Panel		000 8212	8	1/4 - 20 x 1/2" Truss Hd. Screw
4	128 2921	1	Panel Above Fan		000 8167	8	1/4 - 20 Flanged Locknut
5	021 2602	2	End Panel to Hopper Joiner Angle	17	121 0414	2	Latch and Handle
6	021 2832	1	Right Rear End Panel	18	001 8256	2	Spring - 5/8" ID x 2"
7	128 2919	1	Panel Above Door (37" x 30")		000 8174	4	3/8" Flatwasher
8	128 2999	1	Decal Mount Plate		000 8199	2	1/8" x 1" Cotter Pin
9	128 8331	1	Large Decal - See note	19	121 8310	1	"Made in USA" - Decal
10	128 8368	1	690 Model Decal	20	127 8300	1	"CGA" Dryer Plate (Canada only)
11	021 2833	1	Left Rear End Panel	21	128 1183	1	Rear Door Ass'y. (Incl. ref. 15 thru 18, 22, & 23)
12	128 2888	1	Filler Panel (37" x 33")	22	128 2957	1	Rear Door Panel
13	128 2715	1	Door Frame	23	121 2887	1	Door Handle
14	128 5201	2	Hinge Pin				

**NOTE:** This decal is imprinted "Model 975." Order ref. 10 to be placed over "Model 975."

## SCR Drive Motor and Gear Box



Ref.	Part No.	Qty.	Description	Ref.	Part No.	Qty.	Description
1	124 6837	1	DC Motor - 1/3 HP	9	127 6860	-	230/460V 1.5HP 3Ø Motor
	122 8613	-	Brushes for Baldor		121 6861	-	230/460V 2HP 3Ø Motor
2	124 6624	1	SCR Gear Box (Incl. 3/16" x 1" Key- 001 5110)		001 5112	1	Key - 3/16" x 1 3/8" (For 1 1/2 HP motor)
	128 8947	1	Pint of Mobil SHC 634 Oil		001 5114	1	Key-3/16" x 1 1/8" (For 2 HP motor)
	000 8123	4	3/8-16 x 1 1/4" Capscrew		128 1810	1	Motor To Cabinet Wire Ass'y.
	000 8174	4	3/8" Flatwasher		000 8110	1	5/16-18 x 1 1/2" Capscrew
	000 8168	4	3/8" Flanged Locknut		000 8108	3	5/16-18 x 1" Capscrew
3	128 6422	1	SCR Gear Box Sprocket (not shown) RC-40 12T, 3/4" Bore		000 8173	8	5/16" Flatwasher
4	128 6423	2	Sprocket-RC40-36T-1 1/4" Bore		000 8169	4	5/16-18 Flanged Locknut
	000 8298	2	Woodruff Key - 1/4" x 3/4"	10	124 4214	1	Unload Auger Motor Mt.
5	021 6201	1	Pulley-2B x 13.6 SK		000 8121	4	3/8-16 x 1" Capscrew
	001 5130	1	Key - 3/8" x 1"		001 8132	1	3/8-16 x 4" "J" Bolt
6	021 6100	1	B-65 Belts (Matched set of 2)		000 8174	5	3/8" Flatwasher
7	128 6315	1	Chain - RC-40 x 130 Pitch		000 8168	5	3/8-16 Flanged Locknut
	002 6309	—	Connecting Link	11	121 6022	2	1 1/4" Outboard Brg.
8	121 6210	1	Pulley - 2B - 3-3/16"OD - 5/8" Bore		000 8121	4	3/8-16 x 1" Capscrew
	121 6203	1	Pulley-2B - 3-3/16"OD - 7/8" Bore		000 8174	4	3/8" Flatwasher
					000 8168	4	3/8-16 Flanged Locknut
				12	128 0257	1	Gear Mt. Motor Weld.
					000 8119	4	3/8-16 x 3/4" Capscrew
					000 8174	4	3/8" Flatwasher
					000 8168	4	3/8-16 Flanged Locknut

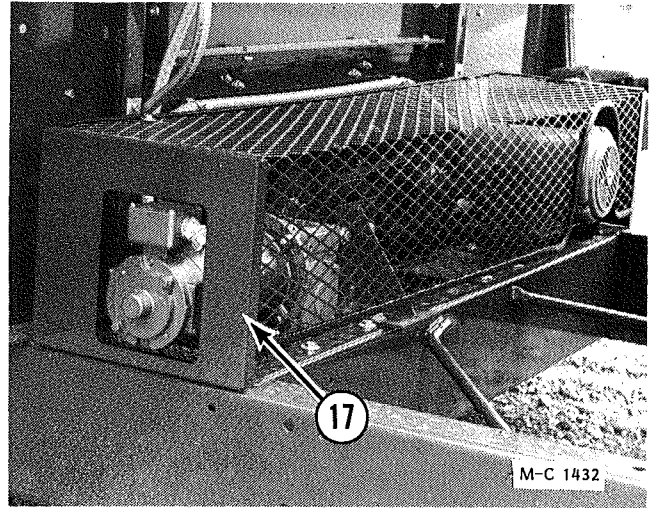
Continued on next page

## SCR Drive Motor and Gear Box

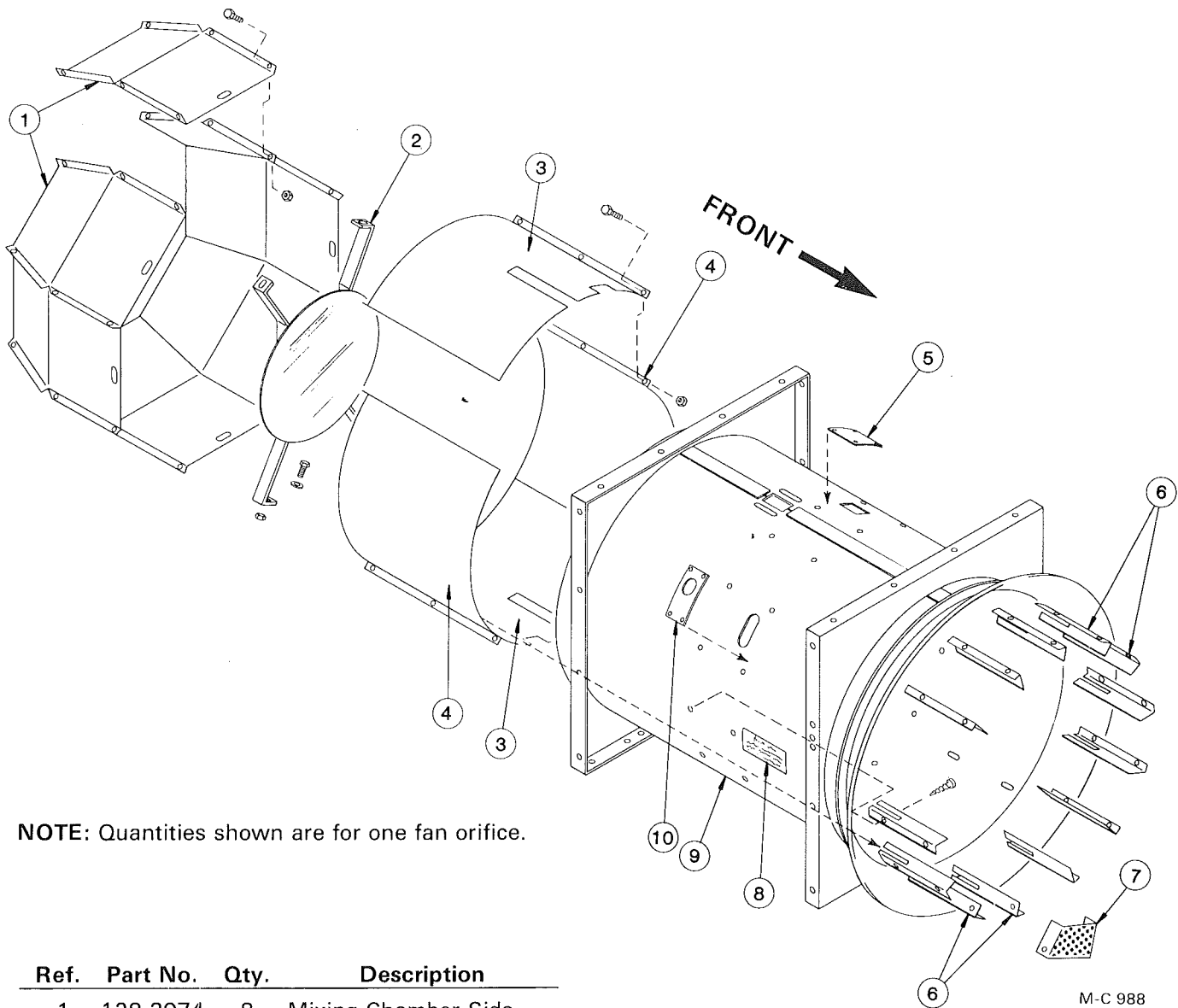
Ref.	Part No.	Qty.	Description
13	001 6202	1	SK Bushing - 1-7/16" Bore (Incl. capscrews)
14	128 0191	1	Outboard Bearing Mount
15	124 4456	1	Gear Box Mount
	000 8119	4	3/8-16 x 3/4" Capscrew
	000 8174	4	3/8" Flatwasher
	000 8168	4	3/8-16 Flanged Locknut
16	128 1999	1	SCR Motor to Cabinet Flexible Conduit (40")
17	128 0268	1	Drive Guard
	128 8951	2	Rubber Strap w/Hook
	001 3302	2	Angle Clip
	000 8121	4	3/8 - 16 x 1" Capscrew
	000 8174	6	3/8" Flatwasher
	000 8149	4	3/8 - 16 Two-Way Locknut

### Not Shown

18	000 8301	2	Safety Shield Warning Decal
—	120 6914	1	Chase Nipple - 1/2"
—	121 6906	2	Pipe Clamp
	000 8212	2	1/4-20 x 1/2" Truss Hd. Screw
	000 8167	2	1/4-20 Flanged Locknut



## Fan Orifice, Orifice Liners, Burner Target, Mixing Chamber and Air Straighteners

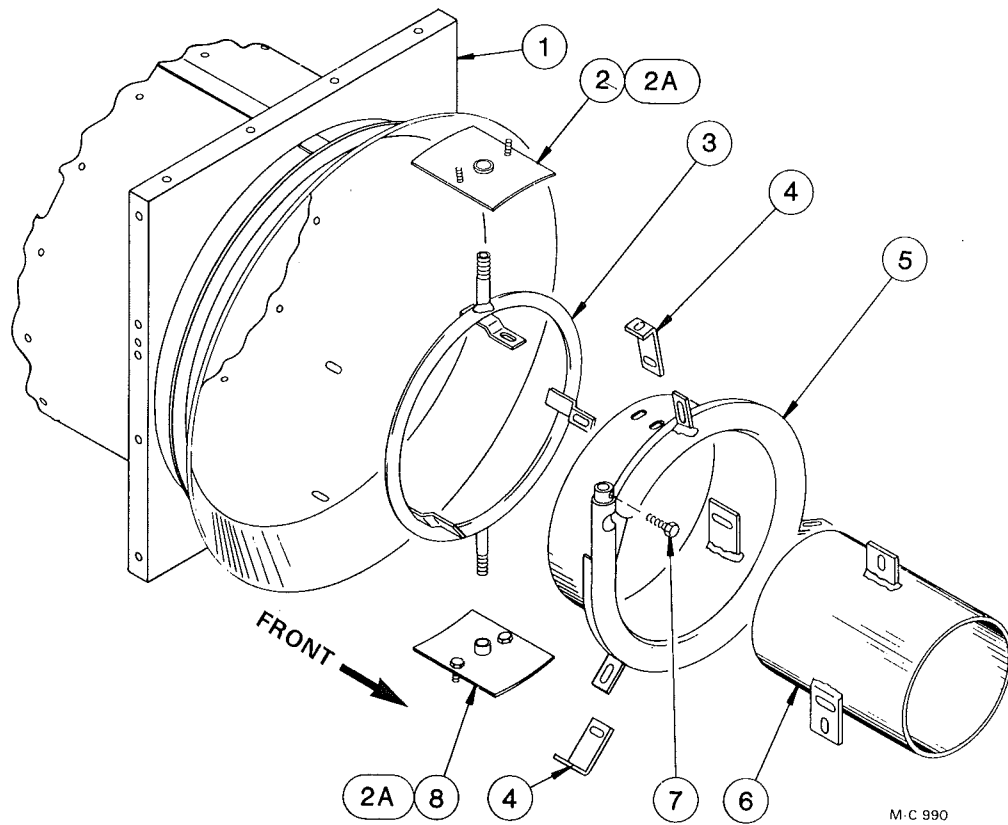


**NOTE:** Quantities shown are for one fan orifice.

Ref.	Part No.	Qty.	Description
1	128 3074	8	Mixing Chamber Side
	000 8238	27	5/16 - 18 x 1/2" Capscrew
	000 8169	27	5/16 - 18 Flanged Locknut
2	128 0280	1	Burner Target
	000 8108	4	5/16 - 18 x 1" Capscrew - Grd. 5
	000 8173	4	5/16" Flatwasher
	000 8169	4	5/16 - 18 Flanged Locknut
3	124 2830	2	Orifice Liner
	000 8238	12	5/16 - 18 x 1/2" Capscrew
	000 8169	12	5/16 - 18 Flanged Locknut
4	123 5205	2	Orifice Liner
	000 8238	12	5/16 - 18 x 1/2" Capscrew
	000 8169	12	5/16 - 18 Flanged Locknut
5	121 2978	1	Orifice Cover Plate
	001 8104	4	1/4 - 20 x 1/2" Self Tapping Screw

Ref.	Part No.	Qty.	Description
6	124 2831	13	Air Straightener - Slotted
	001 8103	26	10 - 24 x 1/2" Self Tapping Screw
7	128 3004	1	Eddy Baffle
	001 8106	2	10 - 32 x 3/4" Machine Screw
	000 8156	2	10 - 32 Nut
8	128 8363	1	Vaporizer Adj. Decal (LP Gas)
9	128 0267	1	Fan Orifice Weld.
10	124 2832	1	Inlet Pipe Seal
	001 8297	3	8 - 18 x 3/4" Self Tapping Screw

## Burner and Air Stabilizer

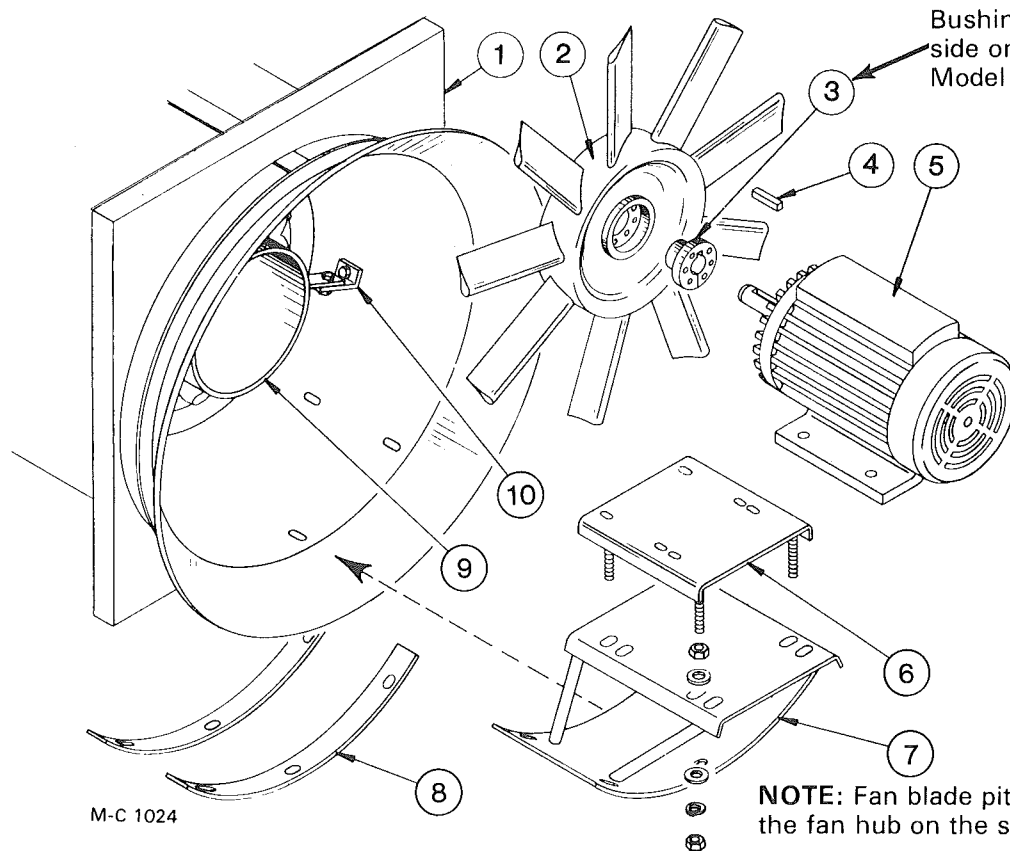


M-C 990

**NOTE:** Quantities shown are for one burner.

Ref.	Part No.	Qty.	Description	Ref.	Part No.	Qty.	Description
1	128 0267	1	Fan Orifice Weld.	5	128 0286	1	Ring Burner Weld.
2	128 0269	1	Vaporizer Seal - 3/4"	6	121 0131	1	Air Stabilizer
	000 8173	2	5/16" Flatwasher		000 8121	3	3/8 - 16 x 1" Capscrew
	000 8169	2	5/16 - 18 Flanged Locknut		000 8174	3	3/8" Flatwasher
2A	128 0279	1	Seal Plate (Natural Gas)		000 8168	3	3/8 - 16 Flanged Locknut
	000 8173	2	5/18" Flatwasher	7	128 8115	1	5/16 - 18 x 1" Stainless Steel Capscrew
	000 8169	2	5/16 - 18 Flanged Locknut	8	128 0270	1	Vaporizer Seal - 1/2" (LP Gas)
3	128 0274	1	Vaporizer Ring (LP Gas)		000 8173	2	5/16 " Flatwasher
	000 8121	3	3/8" - 16 x 1" Capscrew		000 8169	2	5/16 - 18 Flanged Locknut
	000 8174	3	3/8" Flatwasher				
	000 8168		3/8 - 16 Flanged Locknut				
4	121 3459	3	Burner Mtg. Angle				
	000 8121	6	3/8 - 16 x 1" Capscrew				
	000 8174	6	3/8" Flatwasher				
	000 8168	6	3/8 - 16 Flanged Locknut				

## Fans and Fan Motor Mount



M-C 1024

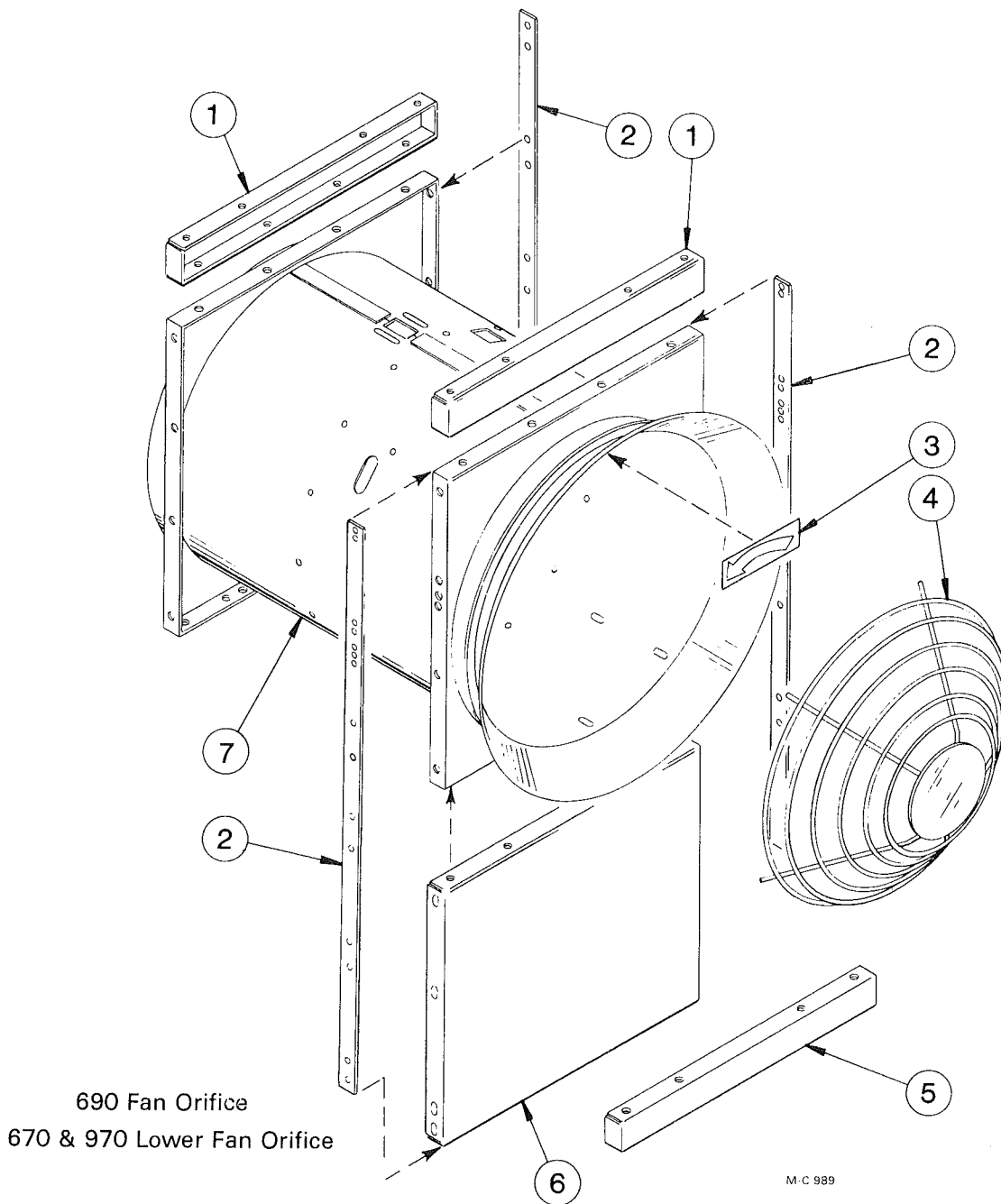
**NOTE:** Fan blade pitch in degrees is stamped on the fan hub on the side opposite the bushing.

**NOTE:** Quantities shown are for one fan assembly.

Ref.	Part No.	Qty.	Description	Ref.	Part No.	Qty.	Description
1	128 0267	1	Fan Orifice Weld				
2	---	---	Fan				
	121 0331	1	<b>670</b> Lower (6 blade 18°)				
	121 0337	1	<b>670</b> Upper and <b>970</b> Lower (9 blade 18°)				
	121 0272	1	<b>690</b> and <b>970</b> Upper (9 blade 27°)				
3	121 6239	—	"SK" Bushing - 1 3/8" Bore (7.5 & 10 HP motors)	000 8293	4	3/8 - 16 x 1 1/2" Capscrew - Full Thread (7.5 & 10 HP motor)	
	121 6229	—	"SK" Bushing - 1 3/8" Bore (20 HP motors)	000 8168	4	3/8 - 16 Flanged Locknut	
	121 8117	3	5/16 - 18 x 2" Socket Hd. Capscrew - Grd. 5	000 8139	4	1/2 - 13 x 1 3/4" Capscrew (20 HP motor)	
4	001 5124	1	Key - 5/16" x 2 3/8" (7.5 & 10 HP motor)	000 8170	4	1/2 - 13 Flanged Locknut	
	001 5139	1	Key - 3/8" x 3" (20 HP motor)	6	128 0167	1	Motor Mt. (7.5 & 10 HP motor)
5	---	---	Fan Motor	121 0343	1	Motor Mt. (20 HP motor)	
	124 6948	1	230/460V 7.5HP 3Ø Motor	000 8165	8	3/4 - 10 Hex Nut	
	201 6818	1	230/460V 10HP 3Ø Motor	000 8177	8	3/4" Flatwasher	
	125 6934	1	230/460V 20HP 3Ø Motor	000 8182	4	3/4" Lockwasher	
	124 6816	1	230/460V 7.5HP 1Ø Motor	7	121 0258	1	Motor Mt. Base
	124 6818	1	230/460V 10HP 1Ø Motor	000 8136	5	1/2 - 13 x 1" Carriage Bolt	
	124 6879	1	230/460V 20HP 1Ø Motor	000 8170	5	1/2 - 13 Flanged Locknut	
				8	121 3356	2	Orifice Reinforcement
				9	121 0131	1	Air Stabilizer
				10	121 3459	3	Burner Mtg. Angle

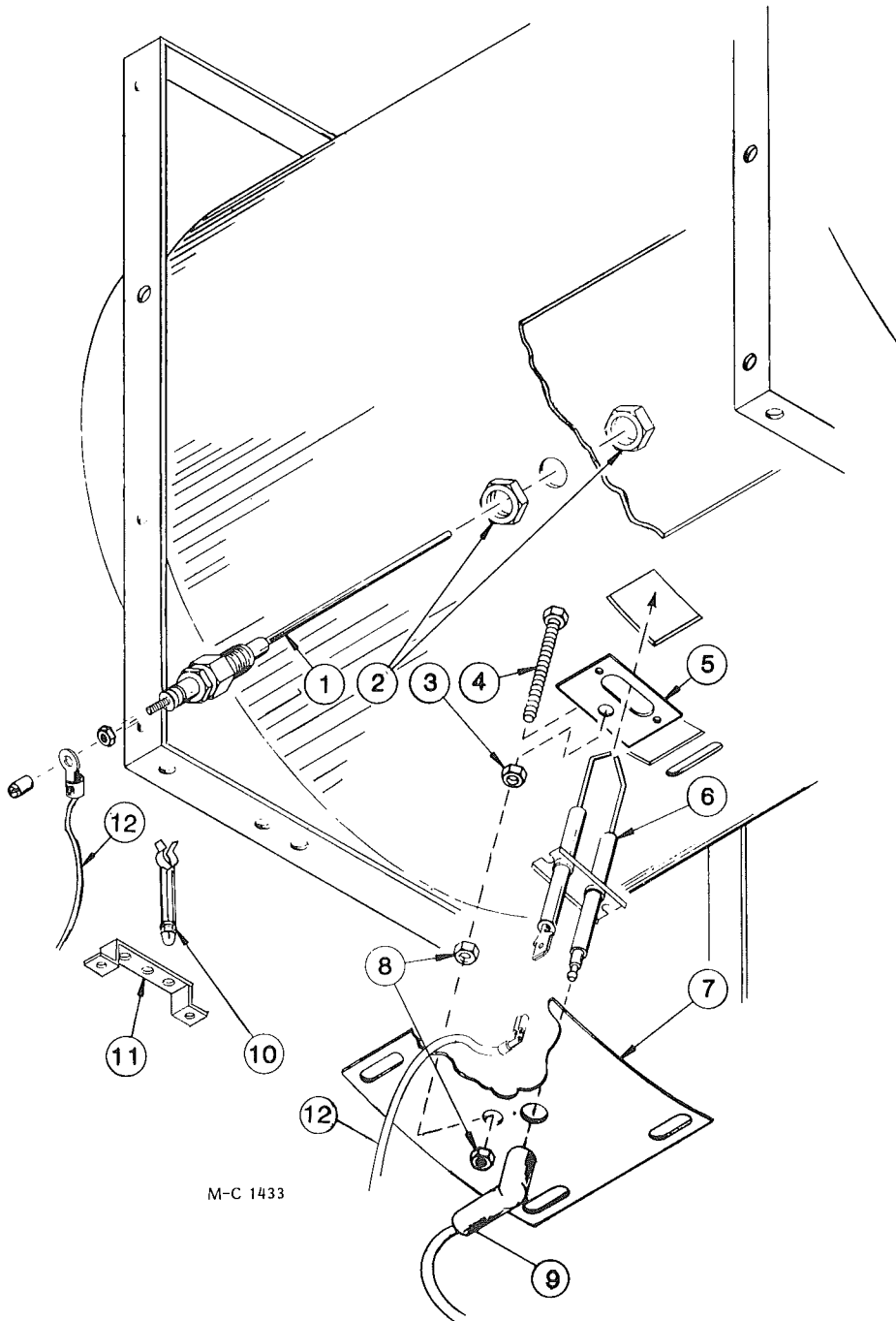


## Fan Orifice Supports and Fan Guard



Ref.	Part No.	Qty.	Description
1	128 0273	2	Orifice Joiner Channel (670 & 970)
2	128 3463	3	Fan Housing Brace (690)
3	121 8301	1	Counterclockwise Arrow Decal
4	121 8956	—	Fan Guard
5	128 0272	1	Orifice Support Channel (670 & 970)
6	128 4445	1	Spacer Panel - Front (690)
7	128 0267	—	Fan Orifice Weld.

## Electrode and Flame Sensing Probe

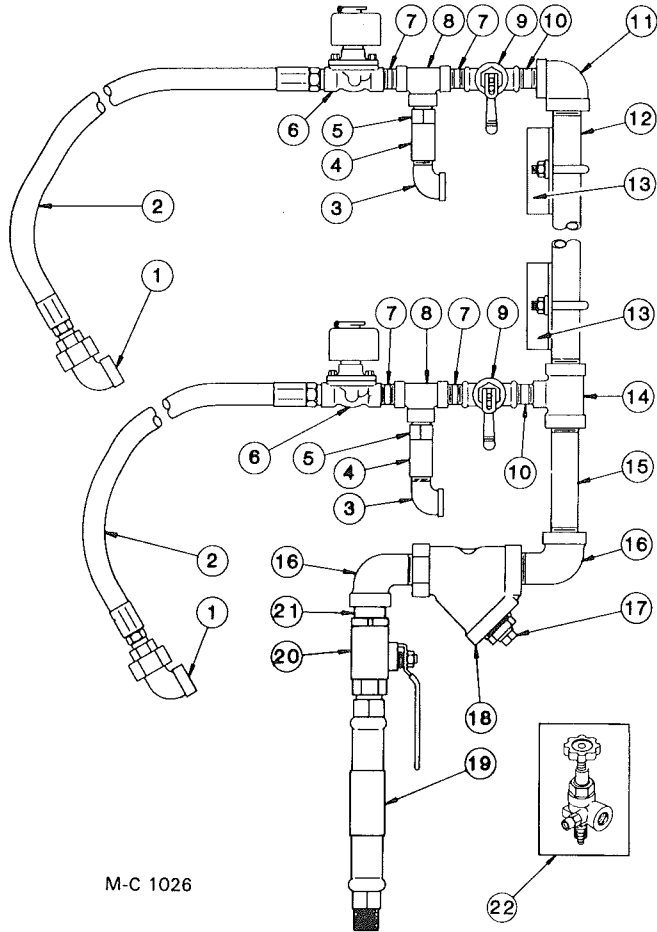


M-C 1433

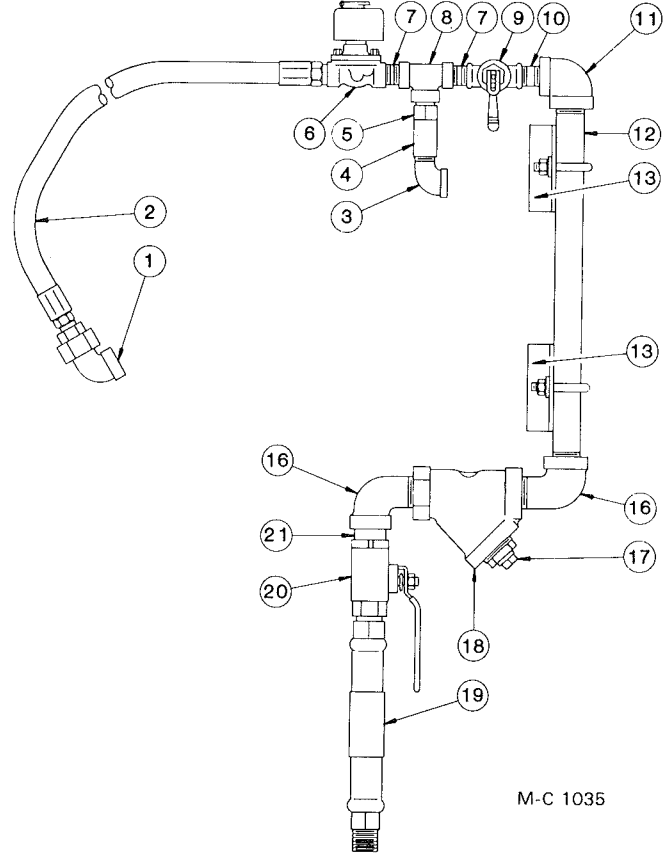
**NOTE:** Quantities shown are for one burner.

Ref.	Part No.	Qty.	Description	Ref.	Part No.	Qty.	Description
1	124 6872	1	Flame Sensing Probe	7	128 2747	1	Electrode Mt. Seal
2	121 6915	2	Locknut - 1/2"		001 8104	4	1/4 - 20 x 1/2" Self Tapping Screw
3	000 8162	1	3/8 - 16 Hex Nut	8	000 8168	2	3/8 - 16 Flanged Locknut
4	000 8227	1	3/8 - 16 x 2 3/4" Capscrew - Full Thread	9	122 9003	3	Ignition
5	128 2746	1	Electrode Mt. Plate	10	128 6989	3	Stand-Off Clip
6	128 6995	1	Style 2 Electrode	11	128 4941	1	Wire Support Brkt. (On bottom burner)
	000 8186	2	6 - 32 x 1/2" Machine Screw	12	124 1079	2	Low Voltage Wire Ass'y,
	000 8245	2	No. 6 Lockwasher				
	000 8185	2	6 - 32 Flanged Locknut				

## LP Gas Liquid Line Piping



**670 & 970**



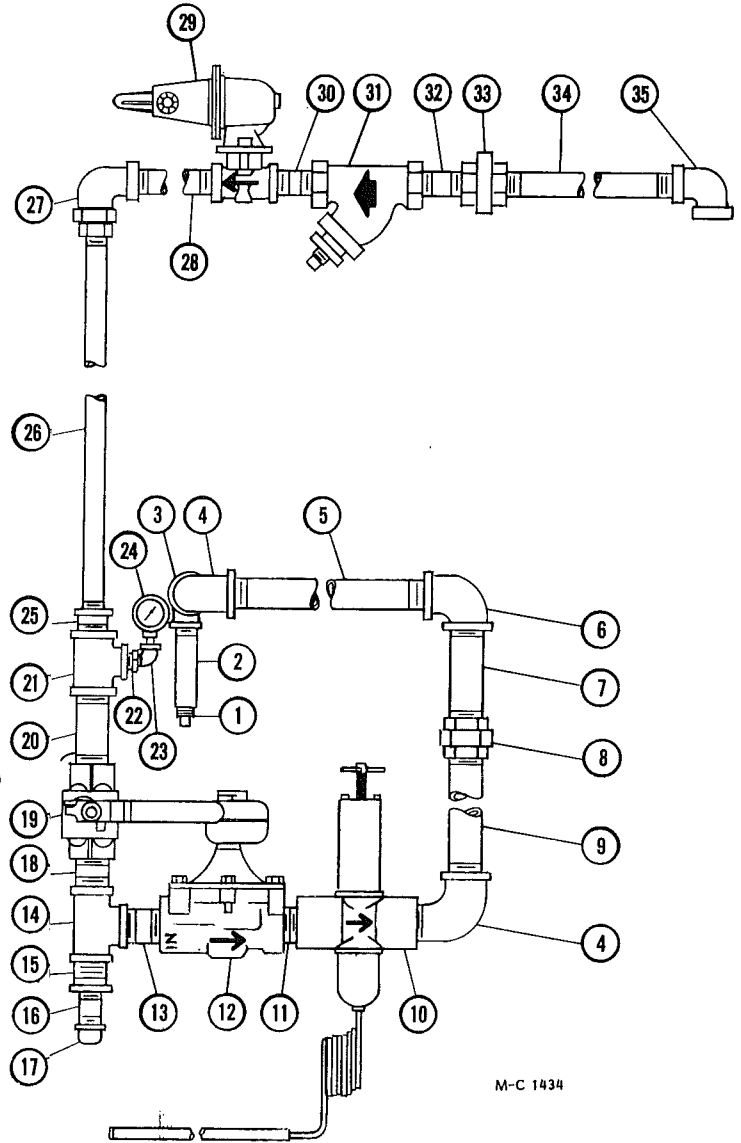
**690**

Ref.	Part No.	Description
1	128 8010	½" Extra Hvy. Union Elbow
2	128 8400	½" ID x 34" Hose w/Couplings
3	121 8048	½" - 90° Std. Street Elbow
4	121 7013	Relief Valve
5	121 7014	Relief Valve Adapter
6	125 7082	½" Solenoid Valve
7	121 8094	½" x 1½" Extra Hvy. Nipple
8	120 8035	½" Extra Hvy. "T"
9	121 7015	Hand Valve - ½"
10	128 8048	½" x 2½" Extra Hvy. Nipple
11	121 8043	1" to ½" - 90° Extra Hvy. Elbow
12	128 8062	1" x 43" Extra Hvy. Nipple (670 & 970)
	128 8055	1" x 16½" Extra Hvy. Nipple (690)

Ref.	Part No.	Description
13	128 2670	Liquid Line Support
	001 8123	5/16 - 18 x 1¾" "U" Bolt
	000 8106	5/16 - 18 x ¾" Capscrew
	000 8169	5/16 - 18 Flanged Locknut
14	125 8018	1" x 1" x ½" Extra Hvy. "T"
15	128 8043	1" x 6" Extra Hvy. Nipple
16	125 8028	1" - 90° Extra Hvy. Street Elbow
17	121 8081	½" Pipe Plug
18	125 8095	1" Strainer
19	121 7026	Inlet Hose
20	128 8012	Hand Valve - 1"
21	125 8030	1" Close Extra Hvy. Nipple
22	121 7021	LP Gas Tank Valve

## LP Gas Manifold and Piping (For One Burner)

Ref.	Part No.	Qty.	Description
1	021 5711	1	Ring Burner Orifice
2	121 7529	1	Inlet Pipe 3/4 x 6
3	123 8049	1	1 1/4 x 3/4 Reducing Elbow
4	123 8062	2	1 1/4 x 90° Str. Elbow
5	123 8085	1	1 1/4 x 19 Nipple
6	123 8051	1	1 1/4 x 90° Elbow
7	128 8065	1	1 1/4 x 11 Nipple
8	123 8053	1	1 1/4 Union
9	127 8021	1	1 1/4 x 9 1/2 Nipple
10	123 7024	1	1 1/4 Mod. Valve
11	123 8069	1	1 1/4 Close Nipple
12	128 7001	1	1 1/4 Solenoid Valve
13	125 8013	1	1 1/4 x 2 Nipple
14	123 8057	1	1 1/4 Tee
15	123 8078	1	1 1/4-3/4 Reducing Bushing
16	121 8077	1	3/4 x 2 Nipple
17	121 8050	1	3/4 Pipe Cap
18	123 8045	1	1 1/4 x 2 1/2 Nipple
19	123 7003	1	Main Burner Hand Valve
20	128 8001	1	1 1/4 x 4 1/2 Nipple
21	127 8131	1	1 1/4 x 1 1/4 x 3/8 Tee
22	127 8132	1	3/8-1/4 Reducing Bushing
23	121 8039	1	1/4 x 90° Str. Elbow
24	120 7002	1	Gas Pressure Gauge
25	123 8078	1	1 1/4 - 3/4 Reducing Bushing
26	128 8046	1	3/4 x 13 1/2 Nipple
27	128 8019	1	3/4 Female Union Elbow
28	125 8058	1	3/4 x 2 1/2 Nipple
29	128 7005	1	Gas Regulator LP
30	121 8005	1	3/4 x 1 1/2 Nipple
31	121 8060	1	3/4 Dirt Strainer
32	121 8010	1	3/4 x 6 1/2 Nipple
33	121 8072	1	3/4 Union Ex. Hvy.
34	128 8006	1	3/4 x 6 Nipple
35	121 8027	1	3/4 x 90° Elbow

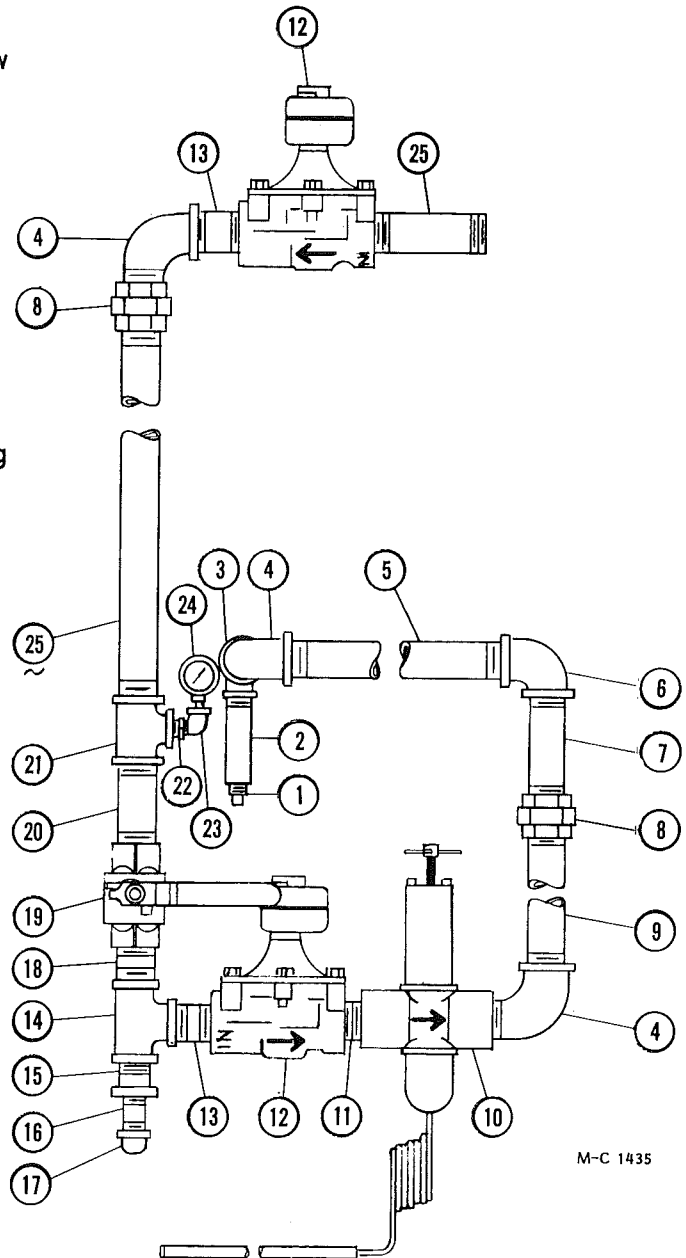


**NOTE:** Components with directional arrows must be installed as shown.

# Natural Gas Manifold and Piping

(For One Burner)

Ref.	Part No.	Qty.	Description
1	123 5531	1	Ring Burner Orifice
2	121 7529	1	Inlet Pipe 3/4 x 6
3	123 8049	1	1 1/4 x 3/4 Reducing Elbow
4	123 8062	3	1 1/4 x 90° Str. Elbow
5	123 8085	1	1 1/4 x 19 Nipple
6	123 8051	1	1 1/4 x 90° Elbow
7	128 8065	1	1 1/4 x 11 Nipple
8	123 8053	2	1 1/4 Union
9	127 8021	1	1 1/4 x 9 1/2 Nipple
10	123 7024	1	1 1/4 Mod. Valve
11	123 8069	1	1 1/4 Close Nipple
12	128 7001	2	1 1/4 Solenoid Valve
13	125 8013	2	1 1/4 x 2 Nipple
14	123 8057	1	1 1/4 Tee
15	123 8078	1	1 1/4-3/4 Reducing Bushing
16	121 8077	1	3/4 x 2 Nipple
17	121 8050	1	3/4 Pipe Cap
18	123 8045	1	1 1/4 x 2 1/2 Nipple
19	123 7003	1	Main Burner Hand Valve
20	128 8001	1	1 1/4 x 4 1/2 Nipple
21	127 8131	1	1 1/4 x 1 1/4 x 3/8 Tee
22	127 8132	1	3/8-1/4 Reducing Bushing
23	121 8039	1	1/2 x 90° Str. Elbow
24	120 7002	1	Gas Pressure Gauge
25	128 8024	2	1 1/4 x 5 Nipple



M-C 1435

**NOTE:** Components with directional arrows must be installed as shown.

## Repair Kits and Parts for Modulating Valves, Solenoid Valves and LP Gas Pressure Regulators

### For Modulating Valves 123 7002 & 123 7024

122 9993 Seat Kit (Incl. stem, disc holder & diaphragm)  
122 7006 Diaphragm

### For 1¼" Solenoid Valve 128 7001

122 7034 Repair Kit (See note)  
--- 4607 Coil

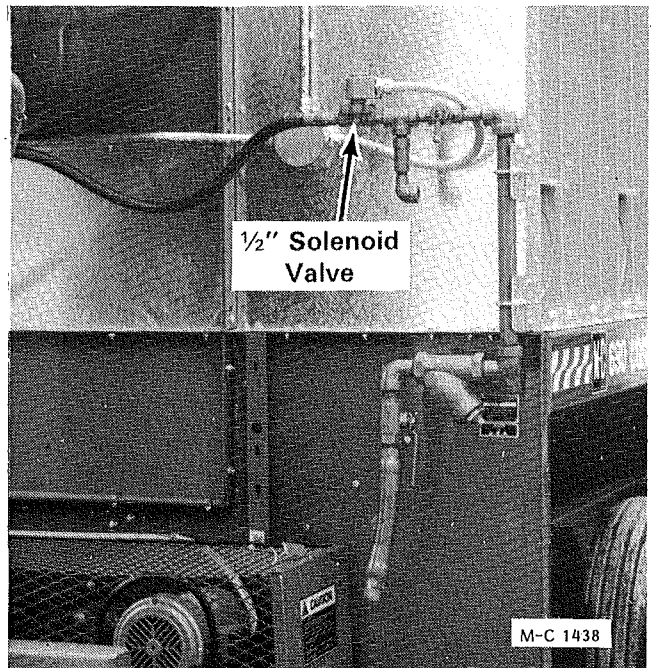
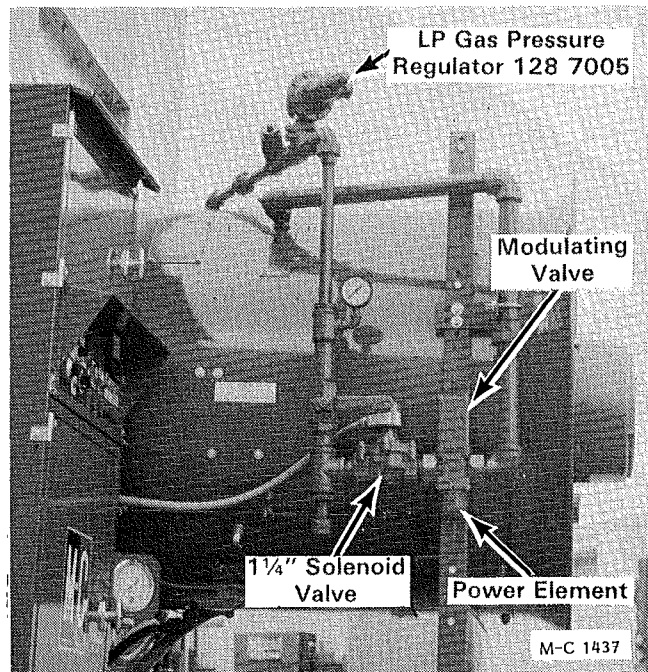
### For ½" Solenoid Valve 125 7082

122 7039 Repair Kit (See note)  
122 7001 Coil

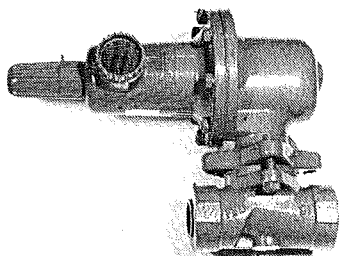
**NOTE:** Kit includes all internal parts that would require replacement in normal service and installation instructions.

### For LP Gas Pressure Regulator 128 7005

122 7043 Diaphragm (Nitrile)  
122 7044 Disc Assembly  
122 7045 Control Spring (Yellow)  
122 7046 Stabilizer  
122 7047 Diaphragm Case O Ring



### Fisher LP Gas Pressure Regulators

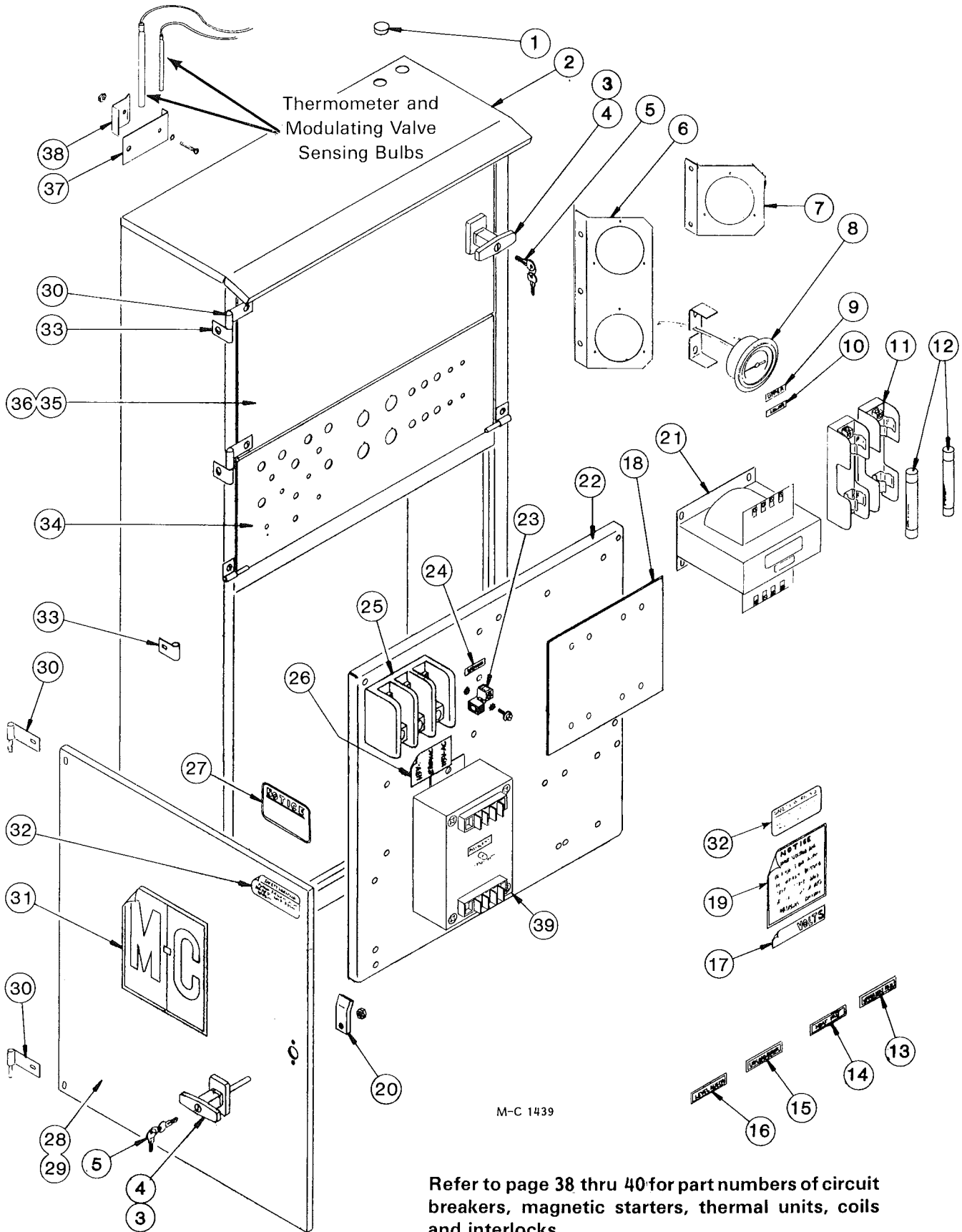


**128 7005**

**This page intentionally blank.**

# 115V and Motor Control Cabinet

(Model 670, 690 & 970)



Refer to page 38 thru 40 for part numbers of circuit breakers, magnetic starters, thermal units, coils and interlocks.

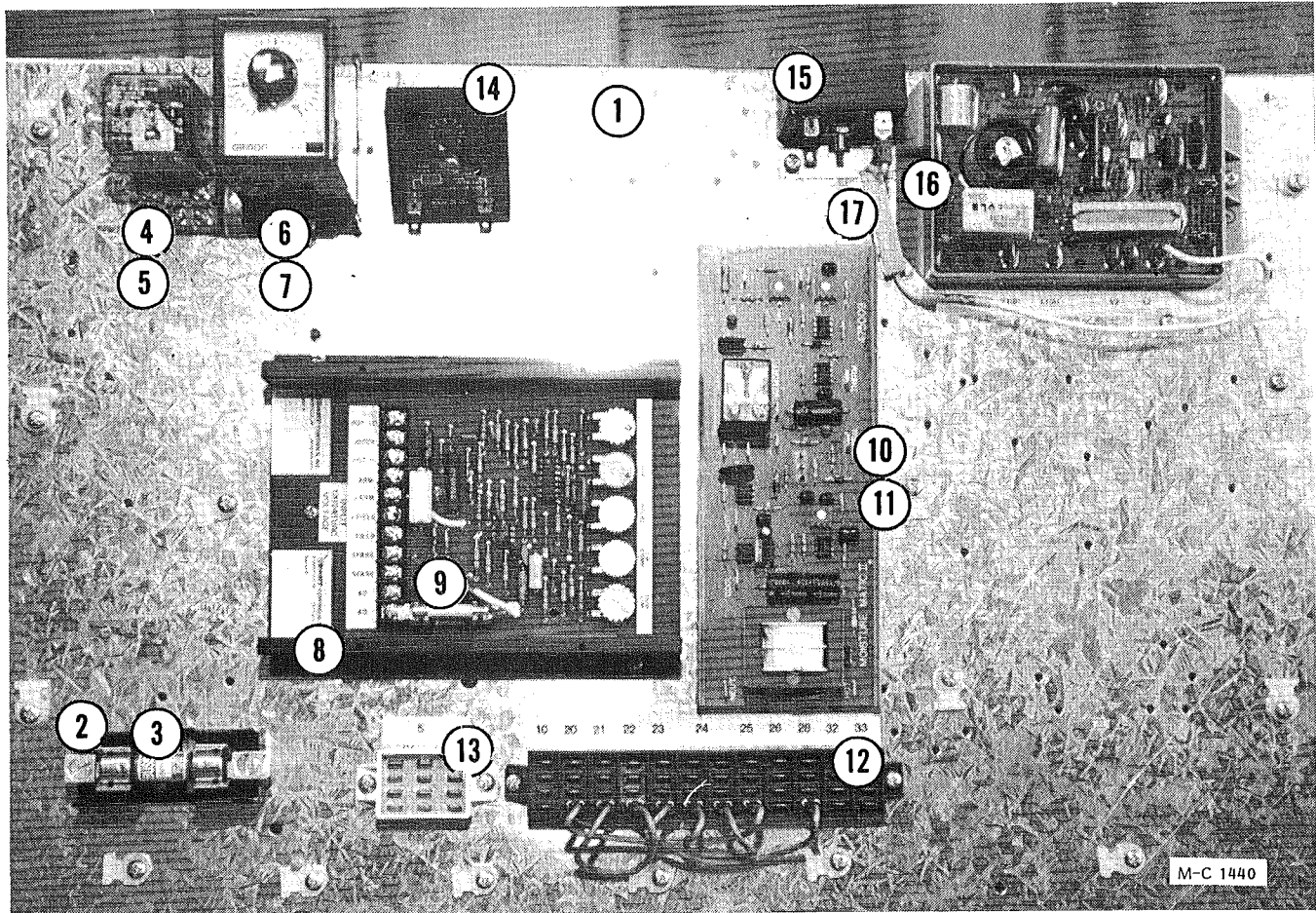


# 115V and Motor Control Cabinet

(Model 670, 690 & 970)

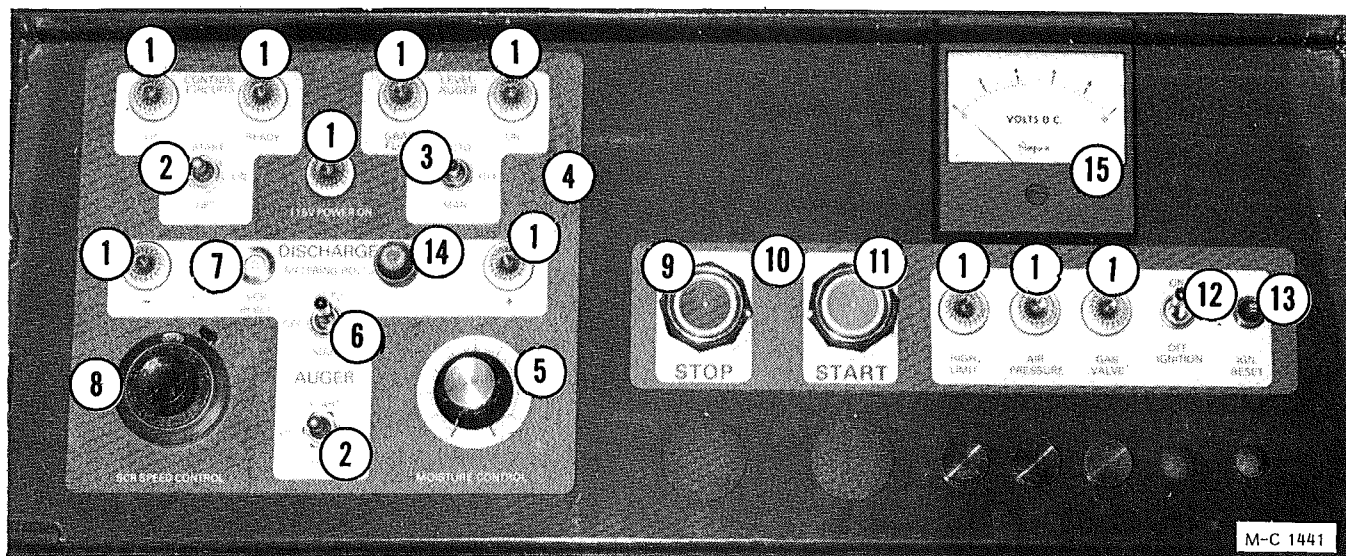
Ref.	Part No.	Qty.	Description	Ref.	Part No.	Qty.	Description
1	121 8600	1	Hole Plug	17	123 8339	1	208 Volts Decal
2	128 0277	1	Control Cabinet Weld		123 8336	1	230 Volts Decal
	128 8600	-	Weather Stripping - ¼" x ½" (Specify ft. reqd.)		123 8335	1	460 Volts Decal
3	124 1021	2	Door "T" Handle Ass'y (Inc. ref. 5 keys, ref. 24 cam and mtg. hdwe.) Lever type handle no longer available.		123 8338	1	575 Volts Decal
				18	128 5789	2	Insulator Sheet (460V & 575V)
4	128 8946	2	Door "T" Handle w/keys (Less ref. 24 cam)	19	121 8315	1	Notice, Warranty Decal
5	122 8900	2	Door "T" Handle Key	20	128 3425	2	Door Handle Cam
6	124 4815	1	Thermometer Mt. Plate (670 & 970)	21	127 6855	1	200/208V Transformer (750VA)
7	124 4824	1	Thermometer Mt. Plate (690)		127 6827	1	230/460V Transformer (750VA)
8	128 8983	-	Thermometer-15' Capillary (Mtg. brkt. incl.)		127 6829	1	230/460/575V Transformer (750VA)
9	121 8322	1	Thermometer "Upper" Decal	22	124 4453	1	Component Mtg. Panel
10	121 8321	1	Thermometer "Lower" Decal	23	125 6918	2	Grounding Lug
11	121 6988	2	Fuse Holder (208V, 460V & 575V)	24	128 8349	1	Ground Decal
12	124 6835	2	208V Fuse - FRN9	25	128 6957	1	Splitter Block - 1 & 3 Phase
	124 6829	2	460V Fuse - FRS4	26	128 8318	1	Splitter Block Voltage Decal
	127 6839	2	575V Fuse - FRS3.2	27	001 8310	1	Machine Warranty Decal
13	121 8325	1	Upper Heat Fan Decal	28	128 1930	1	Lower Door Ass'y (Incl. ref. 3, 24, & 33 thru 36)
14	121 8313	1	Heat Fan Decal	29	124 4816	1	Door - Lower
15	128 8335	1	Unload Auger Decal	30	021 0012	4	Door Hinge w/Pin
16	121 8351	1	Level Auger Decal	31	001 8302	1	M-C Decal - 8-3/16"x9"
				32	121 8316	1	Dryer Warning Decal
				33	121 4656	6	Door Hinge w/o Pin
				34	128 0278	1	Hinged Light Door
				35	128 1908	1	Upper Door Ass'y (incl. ref. 3, 24, 34 & 40)
				36	021 4769	1	Door - Upper
				37	121 2883	-	Sensing Bulb Brkt.
				38	121 2882	-	Sensing Bulb Clip
				39	124 6947	1	Motor Saver (20HP 1Ø only)

## Electrical Components in 115V Control Cabinet



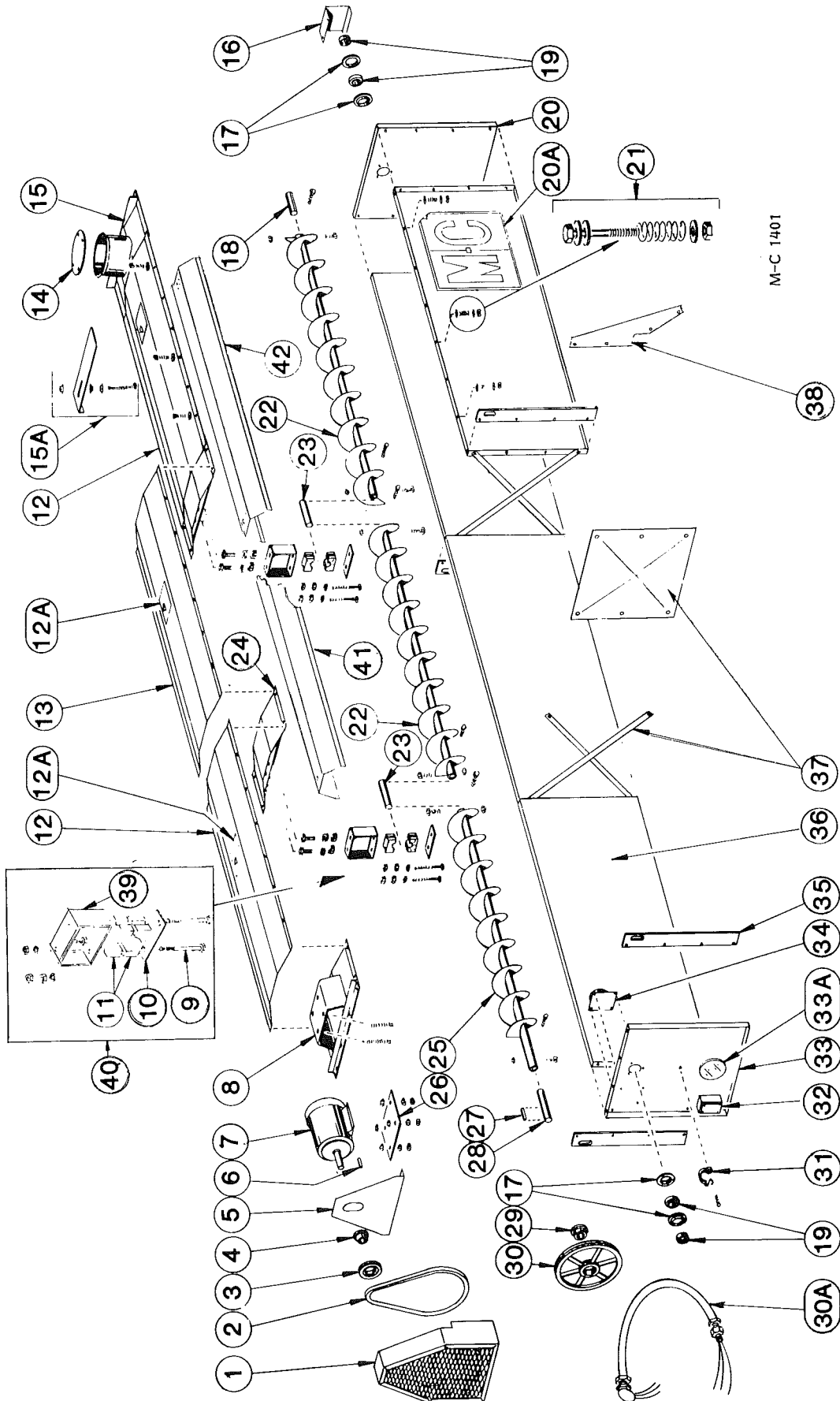
Ref.	Part No.	Description
1	021 4770	Component Mounting Board
2	128 6851	Fuse Holder
3	128 6967	10 Amp Fuse (NON-10)
4	021 6810	Relay Socket
5	021 6809	Relay
6	021 6816	Timer Socket
7	021 6815	60 Minute Adjustable Timer
8	124 6874	SCR Board (Dart)
9	121 6805	10 Amp. - GLH Fuse
10	124 6940	Moisture-Matic II
11	128 5916	Snap Track 8½"
12	124 6928	Terminal Block 12-Position
13	124 6929	Terminal Block 3-Position
14	124 6890	Adjustable .01-8 Min. Timer
15	124 6831	10 Sec. Timer
16	121 6925	Ignition Board
17	127 6812	10W 3K Resistor

## Control Panel Lights, Switches and Controls



Ref.	Part No.	Description
1	121 6808	125V Indicator Lamp Ass'y. (Incl. lamp & lens)
	122 6810	125V Indicator Lamp
	122 6800	Indicator Lamp Lens (Clear)
2	120 6827	OFF-ON-ON Momentary Contact Toggle Switch
3	121 6807	ON-Off-ON Toggle Switch DPDT
4	128 8365	115V Control Bezel
5	124 6939	Moisture Control Potentiometer w/Knob & Wire
	124 6941	Knob
6	121 6807	ON-OFF-ON Toggle Switch DPDT
7	124 6848	8 Amp. Circuit Breaker (SCR Drive)
8	124 1089	SCR Drive Potentiometer (10 turn w/ wire)
	124 6892	Multi-Dial
9	128 6845	Stop Button - Red
10	128 8358	Fan Control Bezel
11	128 6844	Start Button - Black
12	121 6815	ON-OFF Toggle Switch (SPST)
13	122 6814	Ignition Reset (0.1 Amp.)
14	124 6938	Fuse Holder
	124 6937	1 Amp. Fuse Slo-Blow
15	124 6936	Discharge Meter (See pg. 42)
	124 1081	Resistor Assembly

# Hopper and Level Auger

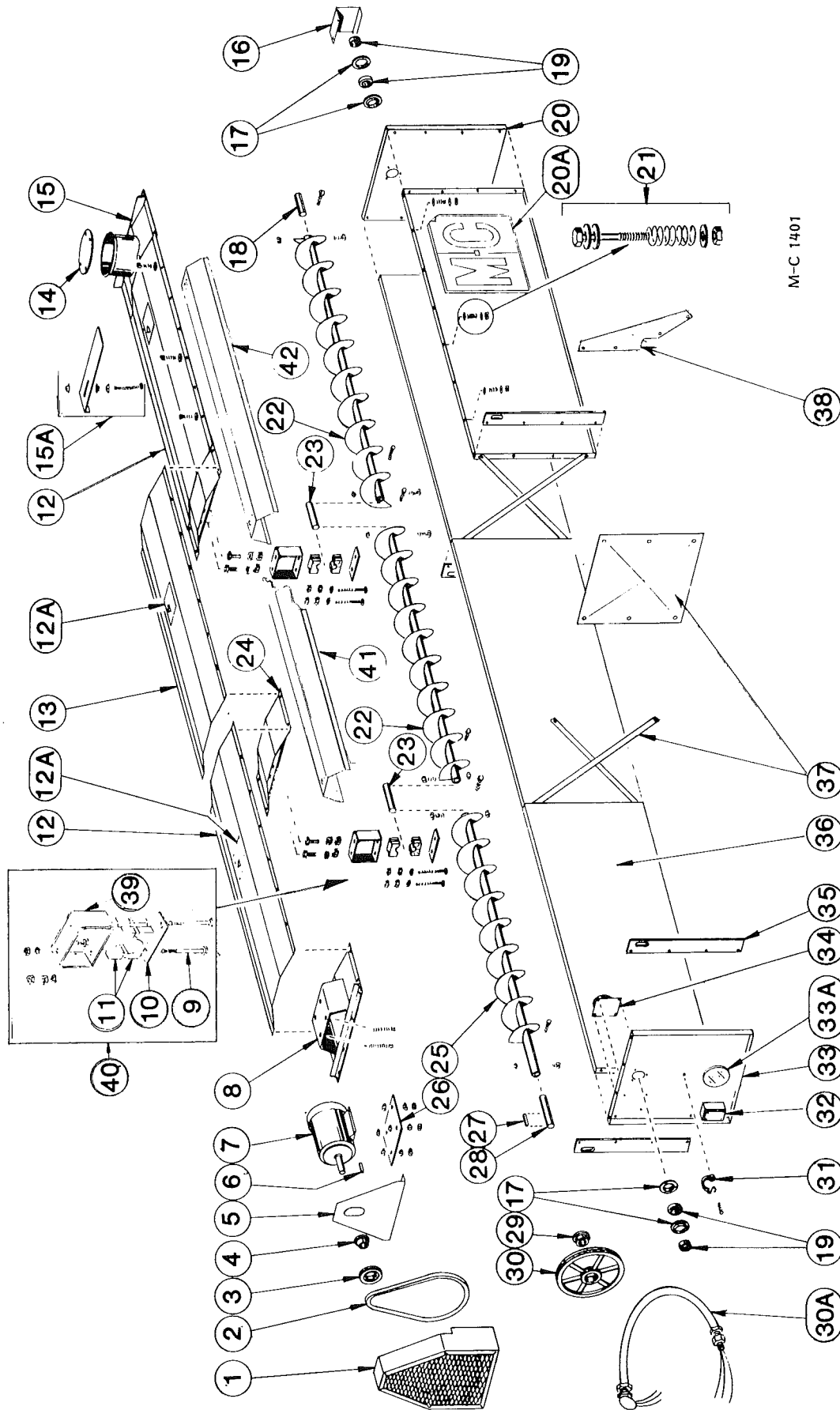


# Hopper and Level Auger

Ref.	Part No.	Qty. (16')	Qty. (24')	Description
1	129 0003	1	1	Level Auger Guard
2	128 6103	1	1	2/3V/710 (banded belt) or 128 6104 in matched set of two
3	128 6207	1	1	3V/3.65 x 2 Grv.
4	128 6214	1	1	1-1/8" SH Bushing - For 3 HP & 5 HP motor (incl. capscrews & lockwashers)
5	129 4944	1	1	Level Auger Guard Back
6	001 5112	1	—	Key-3/16" x 1 3/8" (1.5 HP motor)
	001 5114	1	1	Key-3/16" x 1 5/8" (2 HP motor)
	001 5119	—	1	Key-1/4" x 2" (3 HP motor)
7	128 6818	1	—	230/460V 3HP 3Ø Motor
	128 6815	—	1	230/460V 5HP 3Ø Motor
8	129 0001	1	1	Level Auger Motor Mt.
9	001 8287	2	4	3/8-16 x 3-3/4" Capscrew-Grd. 5
	001 8139	2	4	3/8" Lockwasher
	000 8162	8	16	3/8-16 Hex Nut
10	128 3415	2	4	Bearing Hanger Bar
11	128 6021	1	2	Wood Bearing - 1 1/4" (2 halves)
12	129 2945	2	2	Hopper Cover - Front & Rear (76")
12A	128 8355	2	3	Warning Decal
13	129 2946	—	1	Hopper Cover - Center (83")
14	129 4204	1	1	Receiving Tube Cover
15	129 0002	1	1	Receiving Hopper
15A	129 4205	1	1	Flow Restrictor
	129 5703	1	1	Position & Locking Bolt
	000 8168	3	3	3/8-16 Flanged Locknut
16	129 4947	1	1	Stub Guard
17	001 6004	4	4	Bearing Flangette 1 1/4"
18	128 5052	1	1	Level Auger Rear Shaft (1 1/4" x 8")
19	001 6003	2	2	Bearing w/Lock Collar - 1 1/4"
20	129 2834	1	1	Upper End Panel - Rear
20A	121 8343	2	2	M-C Decal (26 1/2" x 23")
21	000 8101	12	18	1/4-20 x 2" Capscrew
	131 8708	12	18	Spring (5/8" OD x 1 3/4")
	000 8172	36	54	1/4" Flatwasher
	000 8210	12	18	1/4-20 Two-Way Locknut

Continued on next page

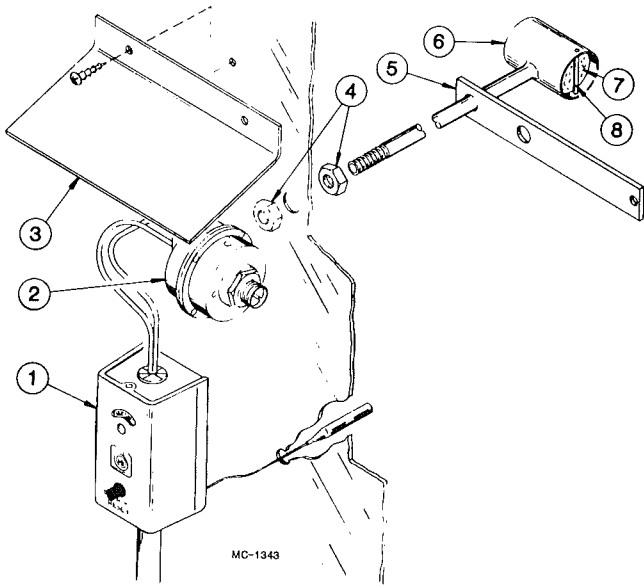
# Hopper and Level Auger



## Hopper and Level Auger

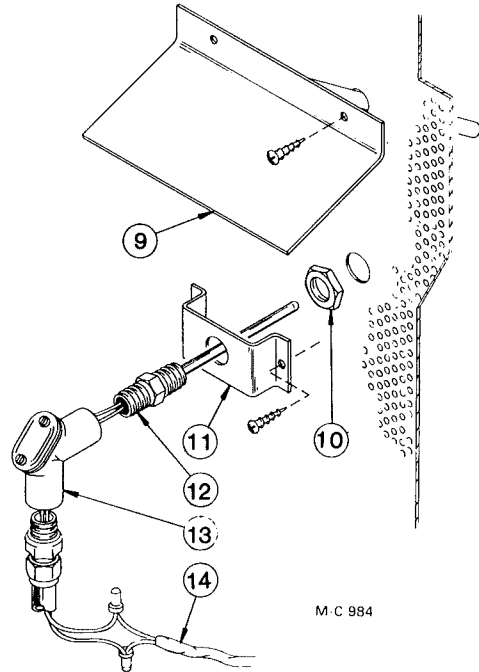
Ref.	Part No.	Qty. (16')	Qty. (24')	Description
22	128 0122	1	2	Level Auger (93½" RH flighting)
23	128 5050	1	2	Level Auger Center Shaft (1¼" x 10¼")
24	129 0000	1	2	Level Auger Support
25	128 0121	1	1	Level Auger (82¾" RH flighting)
	001 8137	8	12	¾-16 x 2" Capscrew - Grd. 5
	001 8149	8	12	¾-16 Two-Way Locknut
26	129 4202	1	1	Level Auger Motor Mt. Plate
	000 8161	4	4	½-13 x 3½" Capscrew (Full thread)
	000 8170	4	4	½-13 Flanged Locknut
	000 8163	8	8	½-13 Hex Nut
27	001 5120	1	1	Key-¼" x 1½"
28	128 5051	1	1	Level Auger Front Shaft (1¼" x 10")
29	121 6241	1	1	1¼" SK Bushing (Incl. capscrews & lockwashers)
30	128 6208	1	1	3V/19.0 x 2 Grv.
30A	128 1960	1	1	Flexible Conduit w/Wires
31	128 8951	1	1	Rubber Strap w/Hook
32	128 6922	1	1	Slatter Box (½")
33	129 2835	1	1	Upper End Panel - Front
33A	129 5702	1	1	Port View Lens
34	128 6992	1	1	Bin Level Indicator (See pg. 36)
35	129 3412	4	4	Lifting Bar
36	129 2836	4	6	Hopper Side
37	129 2948	2	4	Cross Strap (37")
	129 2715	1	2	Hopper Sectional Panel
38	129 2603	6	8	Hopper Brace
39	128 0292	1	2	Level Auger Brg. Support
	001 8135	2	4	¾-16 x 1" Capscrew - Grd. 5
	001 8139	2	4	¾" Lockwasher
	000 8162	2	4	¾-16 Hex Nut
40	122 1008	1	2	Level Auger Brg. Kit (Incl. ref. 10, 11, 39 & 40 in quantities reqd. for one brg.)
41	129 2839	--	1	Auger Cover Long
42	129 2838	1	1	Auger Cover Short

## Moisture Control, Air Pressure and High Limit Switches



**Air Pressure and High Limit Switches**

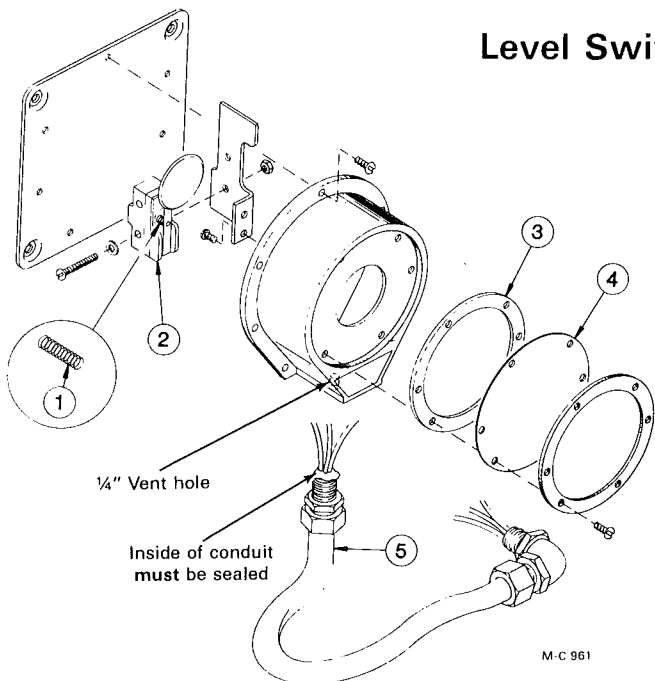
Ref.	Part No.	Description
1	124 6934	High Limit Switch - Adjustable-Manual Reset
2	121 6849	Air Pressure Switch
3	121 2946	High Limit Switch Cover
4	121 8000	Pipe Locknut - 1/4"
5	121 2007	Air Pressure Tube Brkt.
6	121 0169	Air Pressure Tube
7	121 5716	Air Pressure Tube Filter
8	-----	Filter Retainer (Wire)



**Moisture Control Probe**

Ref.	Part No.	Description
9	121 0031	Moisture Control Shield
10	121 6915	Locknut - 1/2"
11	128 3007	Bracket
12	124 6893	Thermistor Sensor (Probe)
13	123 8089	1/2" Handy EII
14	125 6908	18/2 PVC Cord w/Shield

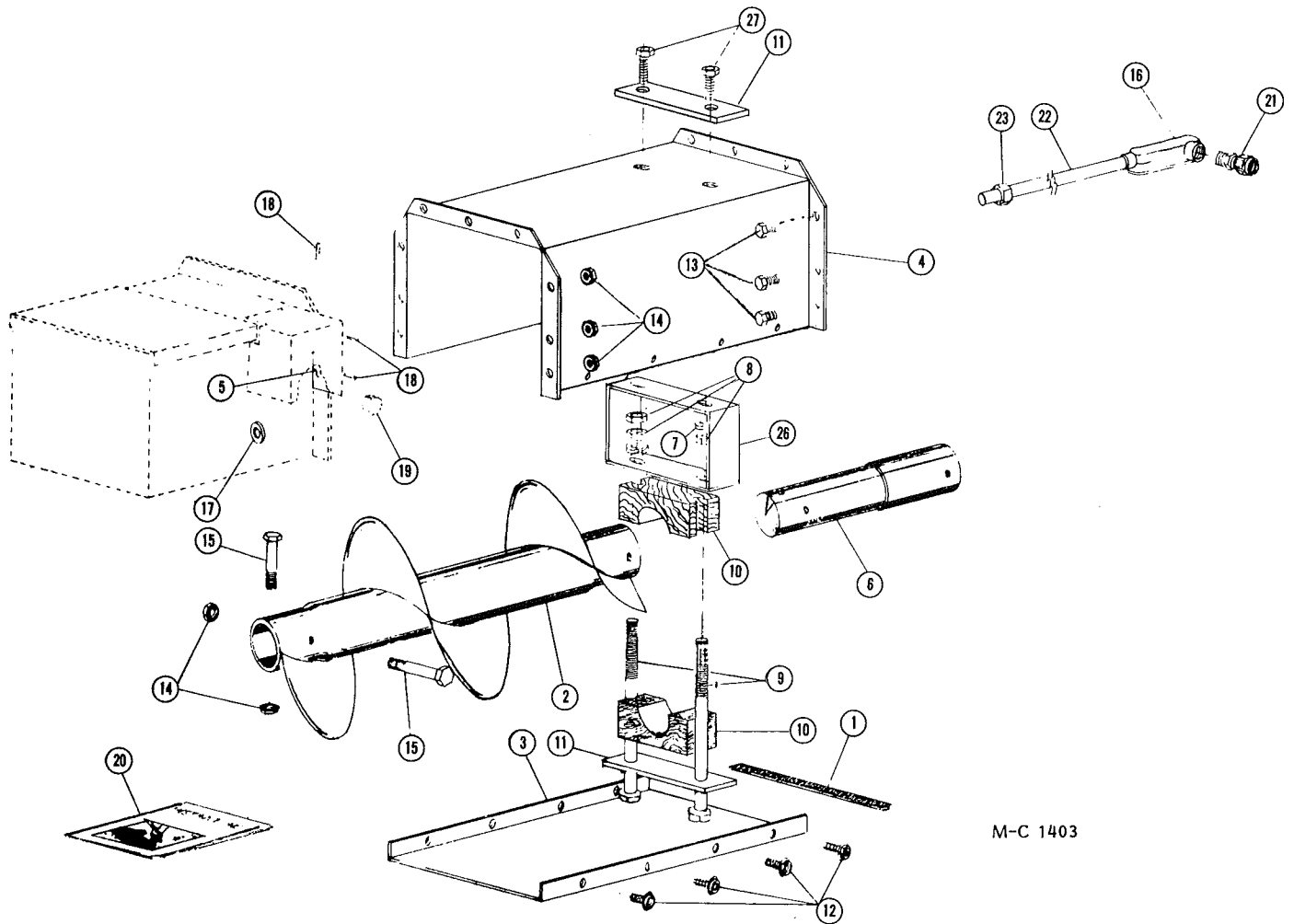
## Level Switch Assembly



Ref.	Part No.	Qty.	Description
—	128 6992	1	Bin Level Indicator (Less ref. 5)
1	122 6847	1	Spring
2	122 6848	1	Microswitch Ass'y.
3	122 6850	1	Gasket
4	122 6849	1	Diaphragm (Teflon)
5	128 1995	1	Level Switch Wire Ass'y.



## 10" Unloading Auger Extension Kit (2') - 127 1181



M-C 1403

Ref.	Part No.	Qty.	Description	Ref.	Part No.	Qty.	Description
1	121 8957	1	Rubber Guard Edge	19	121 8600	1	1/2" Knock-Out Plug
2	127 0029	1	Unload Auger Extension	20	D151	1	Installation Instructions
3	127 4436	1	Auger Cover - Bottom	21	121 6892	2	1/2" Straight Connector
4	127 4435	1	Unload Auger Cover	22	120 6865	1	1/2" Conduit (30" Long)
5	127 4786	1	Switch Cover - Back	23	121 6895	1	1/2" Conduit Union
6	127 5081	1	Unload Auger Link	24	128 5572	2	Spacer - 3 3/4"
7	000 8180	2	1/2" Lockwasher	25	001 8257	2	1/2" SAE Flatwasher
8	000 8163	1	1/2-13 Hex Nut	26	128 0285	1	Bearing Support
9	001 8168	2	1/2-13 x 4 1/2" Capscrew - Grd. 5	27	133 8161	2	1/2-13 x 1 1/2" Capscrew - Grd. 5
10	128 6020	1	1-15/16" Wood Bearing		000 8180	2	1/2" Lockwasher
11	128 4250	2	Mid Bearing Support		000 8163	2	1/2" Hex Nut
12	001 8284	8	5/16-12 x 1/2" Self Tapping Screw	—	121 6868	2	Closed End Splice
13	000 8119	9	3/8-16 x 3/4" Capscrew	—	128 6925	2	Female Insulator
14	000 8205	15	3/8-16 Top Lock Flange Nut	—	121 6930	8 ft.	18 Ga. Black Wire
15	000 8229	6	3/8-16 x 2 3/4" Capscrew - Grd. 5				
16	125 6915	1	1/2" LR 50A Condulet				
17	000 8174	1	3/8" Flatwasher				
18	000 8184	3	8-18 x 1/2" Philips Pan Head Screw				

**DRYER MOTORS, CIRCUIT BREAKERS AND MAGNETIC STARTERS**

MOTOR			CIRCUIT BREAKER			MAGNETIC STARTER			
HP	*FLA	Part No.	Part No.	Amps	Sq."D" No.	Starter Part No.	Sq."D" No.	Thermal Unit Part No.	Thermal Unit Size

**200/208V - 3 PHASE - 60 HZ**

□ 1.5	5.98	127 6833	128 6882	15	QOU 315	124 6931	DPS033	128 6947	B 9.10
‡ 1.5	5.98	127 6861	128 6882	15	QOU 315	124 6931	DPS033	128 6947	B 9.10
2	7.82	127 6841	128 6882	15	QOU 315	124 6931	DPS033	128 6863	B 11.5
3	11.0	127 6832	124 6875	20	QOU 320	124 6931	DPS033	128 6823	B 17.5
5	17.5	127 6843	124 6876	35	QOU 335	124 6931	DPS033	120 6857	B 32
7.5	25.3	127 6858	124 6904	50	QOU 350	124 6930	DPS053	128 6979	B 40
10	32.2	203 6809	125 6912	60	QOU 360	124 6930	DPS053	128 6950	B 50
15	48.3	126 6854	128 6885	90	QOU 390	124 6930	DPS053	128 6953	B 79
20	62.1	127 6853	128 6966	100	QOU 3100	124 1082	DPA73	128 6827	CC 87.7
25	67.0	127 6852	128 6887	110	Q2L 3110	124 1082	DPA73	120 6844	CC 103
30	80.0	127 6859	124 6906	125	Q2L 3125	124 1083	DPA93	128 6954	CC 132

**230V - 1 PHASE - 60 HZ**

□ 1.5	8.3	121 6846	128 6878	20	QOU 220	124 6931	DPS033	128 6863	B 11.5
‡ 1.5	10.6	127 6863	128 6878	20	QOU 220	124 6931	DPS033	120 6850	B 15.5
2	12.3	121 6862	124 6903	25	QOU 225	124 6931	DPS033	128 6949	B 19.5
3	20.0	128 6829	124 6909	40	QOU 240	124 6931	DPS033	120 6857	B 32
5	28.0	201 6815	128 6880	60	QOU 260	124 6930	DPS053	128 6979	B 40
† 7.5	38.5	124 6816	124 6908	80	QOU 280	124 6930	DPS053	124 6910	B 66
† 7.5	38.5	124 6888	124 6908	80	QOU 280	124 6930	DPS053	124 6910	B 66
10	45.0	124 6818	128 6881	90	QOU 290	124 6930	DPS053	128 6953	B 79
20	92.0	124 6879	124 6881	125	Q2L 2125	124 1083	DPA93	128 6820	CC 156

**230V - 3 PHASE - 60 HZ**

□ 1.5	5.0	121 6845	128 6882	15	QOU 315	124 6931	DPS033	120 6851	B 7.70
‡ 1.5	5.0	127 6860	128 6882	15	QOU 315	124 6931	DPS033	120 6851	B 7.70
2	6.0	121 6861	128 6882	15	QOU 315	124 6931	DPS033	128 6947	B 9.10
3	9.0	128 6818	128 6882	15	QOU 315	124 6931	DPS033	125 6931	B 14.0
5	13.8	128 6815	124 6907	25	QOU 325	124 6931	DPS033	120 6855	B 25
7.5	20.6	121 6948	128 6968	40	QOU 340	124 6931	DPS033	128 6946	B 36
10	27.2	201 6818	125 6912	60	QOU 360	124 6930	DPS053	120 6853	B 45
15	39.2	201 6819	128 6891	80	QOU 380	124 6930	DPS053	128 6978	B 70
20	49.6	125 6934	128 6885	90	QOU 390	124 1082	DPA73	128 6972	CC 74.6
25	61.0	201 6842	128 6966	100	QOU 3100	124 1082	DPA73	128 6827	CC 87.7
30	73.0	128 6986	128 6887	110	QL2 3110	124 1083	DPA93	128 6820	CC 156

\*IF FLA (Full Load Amps) shown does not match FLA imprinted on motor name plate, refer to Square D charts for correct thermal unit size.

□ - 5/8" shaft

‡ - 7/8" shaft

† - 124 6816 has 1 3/8" shaft. 124 6888 has 1 1/8" shaft.

**DRYER MOTORS, CIRCUIT BREAKERS AND MAGNETIC STARTERS**

MOTOR			CIRCUIT BREAKER			MAGNETIC STARTER			
HP	*FLA	Part No.	Part No.	Amps	Sq."D" No.	Starter Part No.	Sq."D" No.	Thermal Unit Part No.	Thermal Unit Size

**380V - 3 PHASE - 50 HZ**

1.5	2.9	127 6860	128 6931	15	FAL 36015	124 6931	DPS033	128 6951	B 6.25
**1.5	2.9	123 6876	128 6931	15	FAL 36015	124 6931	DPS033	128 6951	B 6.25
2	3.7	121 6861	128 6931	15	FAL 36015	124 6931	DPS033	120 6845	B 6.90
**2	3.7	124 6867	128 6931	15	FAL 36015	124 6931	DPS033	120 6845	B 6.90
3	5.2	128 6818	128 6931	15	FAL 36015	124 6931	DPS033	128 6947	B 9.10
15	23.0	201 6819	128 6937	60	FAL 36060	124 6930	DPS053	120 6853	B 45
20	30.5	125 6842	124 6905	70	FAL 36070	124 6930	DPS053	128 6950	B 50
25	35.9	128 6986	125 6929	80	FAL 36080	124 6930	DPS053	128 6983	B 56

**460V - 3 PHASE - 60 HZ**

□ 1.5	2.5	121 6845	128 6931	15	FAL 36015	124 6931	DPS033	128 6984	B 3.00
‡ 1.5	2.5	127 6860	128 6931	15	FAL 36015	124 6931	DPS033	128 6984	B 3.00
2	3.0	121 6861	128 6931	15	FAL 36015	124 6931	DPS033	128 6948	B 4.15
3	4.5	128 6818	128 6931	15	FAL 36015	124 6931	DPS033	120 6845	B 6.9
5	6.9	128 6815	128 6931	15	FAL 36015	124 6931	DPS033	128 6952	B 10.2
7.5	10.3	121 6948	128 6933	20	FAL 36020	124 6931	DPS033	128 6823	B 17.5
10	13.6	201 6818	125 6928	30	FAL 36030	124 6931	DPS033	120 6855	B 25.0
15	19.6	201 6819	128 6930	40	FAL 36040	124 6930	DPS053	128 6946	B 36
20	24.8	125 6934	128 6937	60	FAL 36060	124 6930	DPS053	120 6853	B 45
25	31	201 6842	124 6905	70	FAL 36070	124 6930	DPS053	128 6983	B 56
30	37	128 6986	125 6929	80	FAL 36080	124 6930	DPS053	128 6978	B 70

**575V - 3 PHASE - 60 HZ**

□ 1.5	2	127 6815	128 6931	15	FAL 36015	124 6931	DPS033	128 6984	B 3.00
‡ 1.5	2	127 6862	128 6931	15	FAL 36015	124 6931	DPS033	128 6984	B 3.00
2	2.4	127 6816	128 6931	15	FAL 36015	124 6931	DPS033	120 6848	B 3.70
3	3.6	127 6814	128 6931	15	FAL 36015	124 6931	DPS033	120 6829	B 5.50
5	5.5	127 6847	128 6931	15	FAL 36015	124 6931	DPS033	128 6985	B 8.20
7.5	8.2	127 6828	128 6931	15	FAL 36015	124 6931	DPS033	128 6863	B 11.5
10	10.8	127 6857	128 6933	20	FAL 36020	124 6931	DPS033	128 6823	B 17.5
15	15.6	127 6845	125 6928	30	FAL 36030	124 6931	DPS033	128 6971	B 28
20	19.8	127 6844	128 6930	40	FAL 36040	124 6931	DPS033	128 6946	B 36
25	25	127 6846	128 6937	60	FAL 36060	124 6930	DPS053	120 6853	B 45
30	30	124 6902	128 6937	60	FAL 36060	124 6930	DPS053	128 6983	B 56

\*If FLA (Full Load Amps) shown does not match FLA imprinted on motor name plate, refer to Square D charts for correct thermal unit size.

\*\*"C" Face

□ - 5/8" shaft

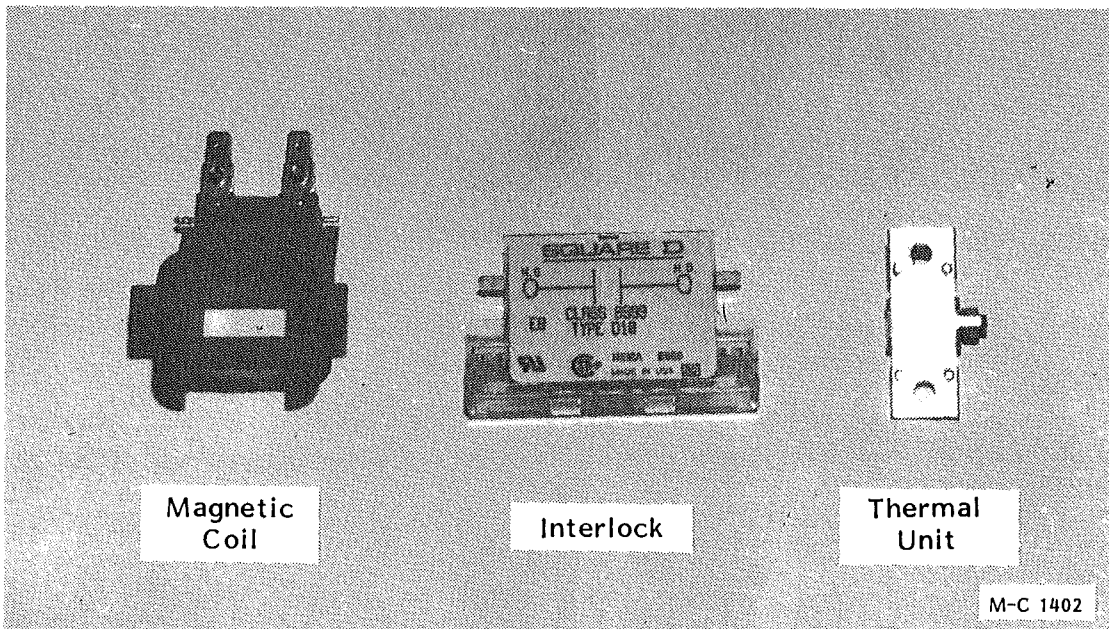
‡ - 7/8" shaft

## 115V COILS AND INTERLOCKS

STARTER		COIL		INTERLOCK	
Sq. "D" No.	M-C No.	M-C No.	Sq. "D" No.	M-C No.	Sq. "D" No.
DPA73	124 1082	122 6861	9998-DA3V02	124 6933	9999-D-20
DPA93	124 1083	122 6861	9998-DA3V02	124 6933	9999-D-20
DPS053 (50) HZ	124 6930	122 6860	9998-DA1V02	124 6933	9999-D-20
DPS033 (50) HZ	124 6931	122 6860	9998-DA1V02	124 6933	9999-D-20
DPS033 (60) HZ	124 6931	122 6860	9998-DA1V02	124 6933	9999-D-20
DPS053 (60) HZ	124 6930	122 6860	9998-DA1V02	124 6933	9999-D-20

## JUMPER STRAP KITS AND CONTACT KITS

STARTER		JUMPER STRAP KIT (2 straps per kit)		CONTACT KIT	
Sq. "D" No.	M-C No.	M-C No.	Sq. "D" No.	M-C No.	Sq. "D" No.
DPA73	124 1082	124 6885	9998-S032	122 6863	9998-DRC7
DPA93	124 1083	124 6885	9998-S032	122 6864	9998-DRC9
DPS033 (50) HZ	124 6931	120 6841	9998-S031		
DPS053 (50) HZ	124 6930	120 6841	9998-S031	122 6862	9998-DRC5
DPS033 (60) HZ	124 6931	120 6841	9998-S031		
DPS053 (60) HZ	124 6930	120 6841	9998-S031	122 6862	9998-DRC5



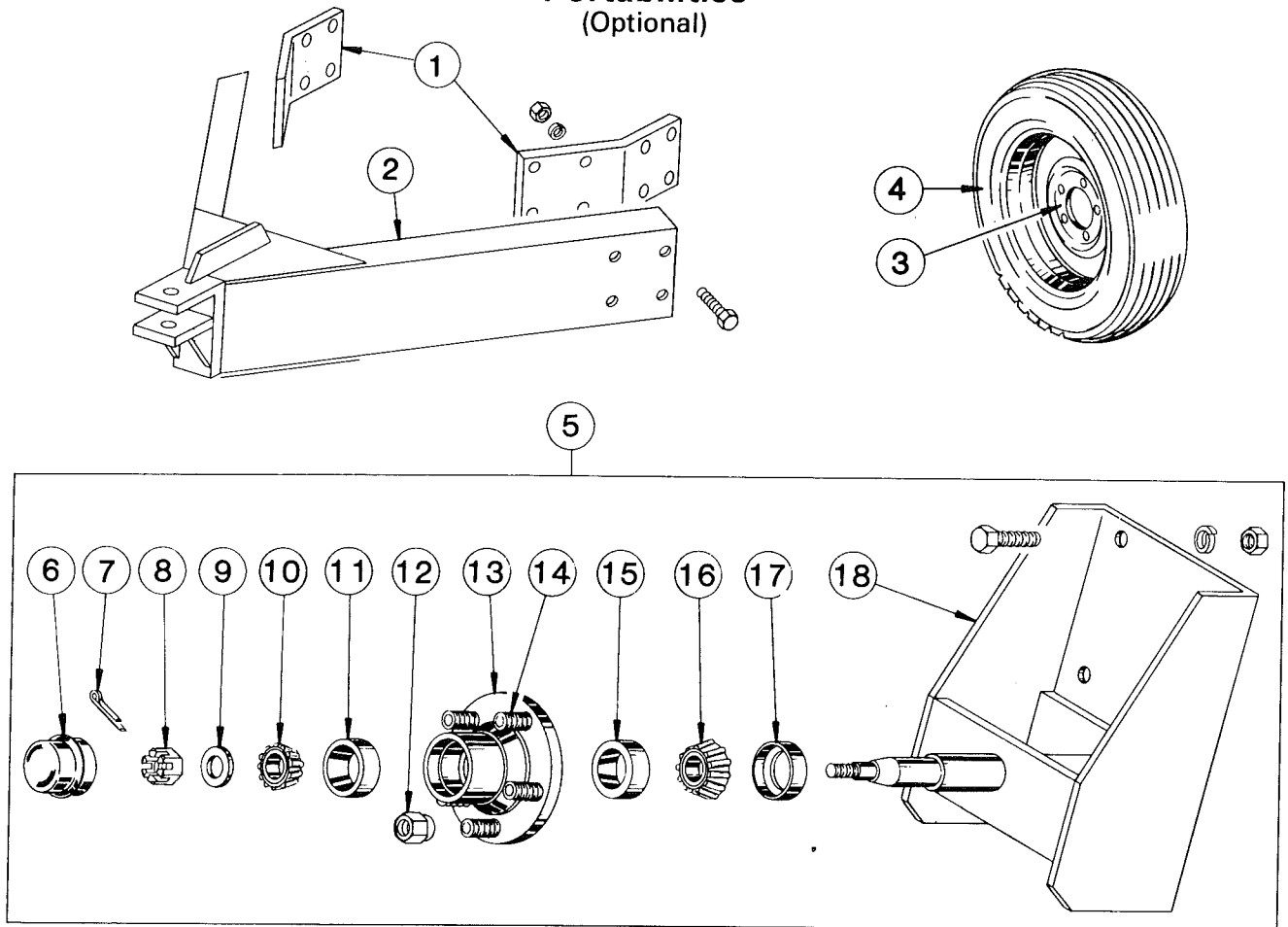
Magnetic  
Coil

Interlock

Thermal  
Unit

M-C 1402

## Portabilities (Optional)



M-C 980

- 120 1030 - 4 Wheel Portabilities (Incl. ref. 1 & 2 and four of ref. 3 & 5 - less tires)
- 120 1031 - 6 Wheel Portabilities (Incl. ref. 1 & 2 and six of ref. 3 & 5 - less tires)
- 120 1043 - 8 Wheel Portabilities (Incl. ref. 1 & 2 and eight of ref. 3 & 5 - less tires)
- 120 1040 - Additional Portabilities (Incl. two of ref. 3 & 5 - less tires)

Ref.	Part No.	Qty.	Description	Ref.	Part No.	Qty.	Description
1	128 3671	2	Pole Mount Brkt.	6	001 8996	1	Hub Cap
	128 8196	8	3/4 - 10 x 2 1/2" Capscrew - Grd. 5	7	001 8252	1	Cotter Pin - 1/8" x 1"
	000 8182	8	3/4" Lockwasher	8	001 8253	1	Spindle Nut
	000 8165	8	3/4 - 10 Hex Nut	9	001 8254	1	Spindle Washer
2	120 0047	1	Dryer Pole	10	001 6000	1	Bearing Cone - Outer
	128 8195	8	3/4 - 10 x 2" Capscrew - Grd. 5	11	002 6000	1	Bearing Cup - Outer
	000 8182	8	3/4" Lockwasher	12	001 8989	5	1/2 - 20 Lug Nut - 45°
	000 8165	8	3/4 - 10 Hex Nut	13	001 8992	1	Wheel Hub Ass'y. - 5 Bolt (Incl. ref. 11, 14 & 15)
3	001 8993	1	5 Bolt Wheel - 15"	14	002 8152	5	1/2 - 20 x 1 1/2" Stud
4	127 8990	1	7.60 x 15 - 6 Ply Tubeless Tire	15	002 6001	1	Bearing Cup - Inner
5	120 1028	1	Wheel Spindle & Hub Ass'y. (Inc ref. 6 thru 18)	16	001 6001	1	Bearing Cone - Inner
	000 8146	6	5/8 - 11 x 1 1/2" Capscrew - Grd. 5	17	001 8991	1	Seal
	000 8181	6	5/8" Lockwasher	18	120 0031	1	Wheel Mount
	000 8164	6	5/8 - 11 Hex Nut				

## **Kits (Field Installed)**

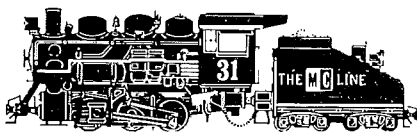
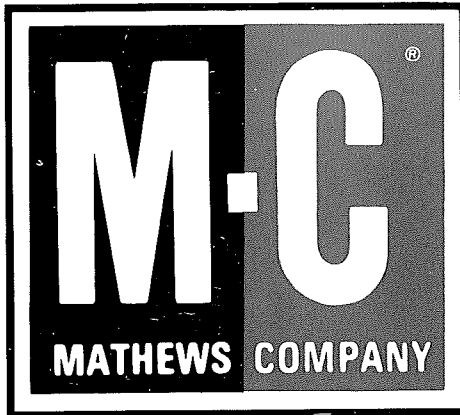
**Decal Kit - All Models (See note)**  
128 9017

**Ignition Wire**  
122 9003

**Remote Sensing Kit or Secondary Ignition Wire Kit**  
124 1079

**Unload Auger Extension Kit (2 ft.)**  
127 1181

**NOTE:** Kit contains all decals except dryer model decals. They must be ordered separately.  
See ref. 9, page 7; ref 14 & 15, page 11 and  
ref. 18 & 19, page 13.



*Iron Horse Quality*