

\$5.00

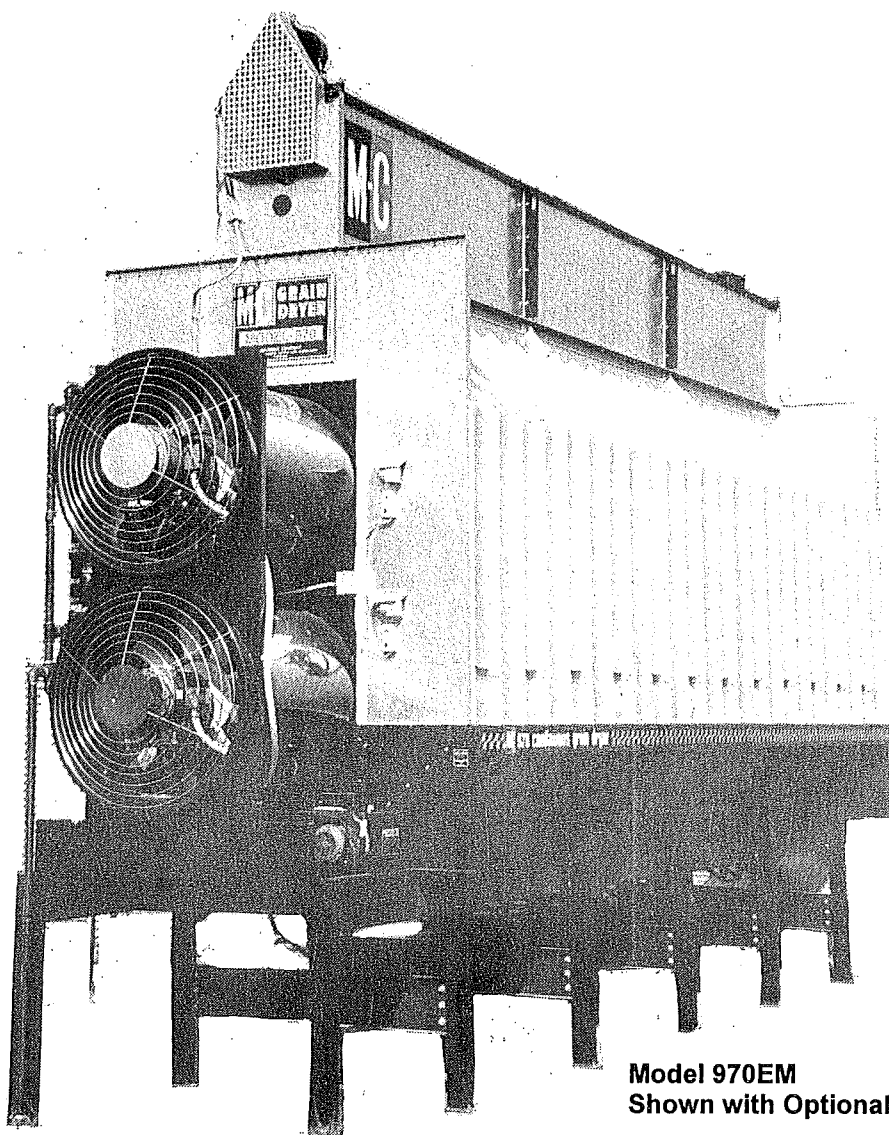


**Model 670, 690 & 970**

(EM and EMS)

**Continuous Flow  
Grain Dryers**

(Starting w/Serial No. 56052)



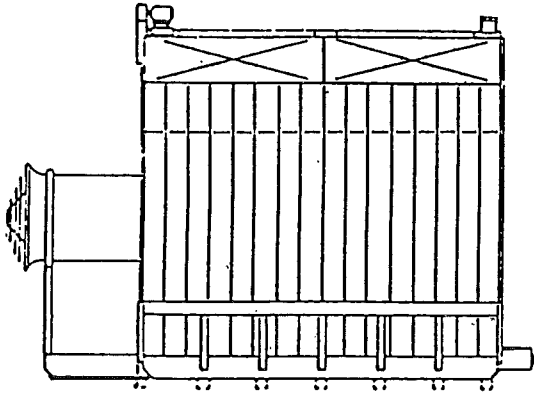
Model 970EM  
Shown with Optional Dryer Stand Kit

# PARTS CATALOG

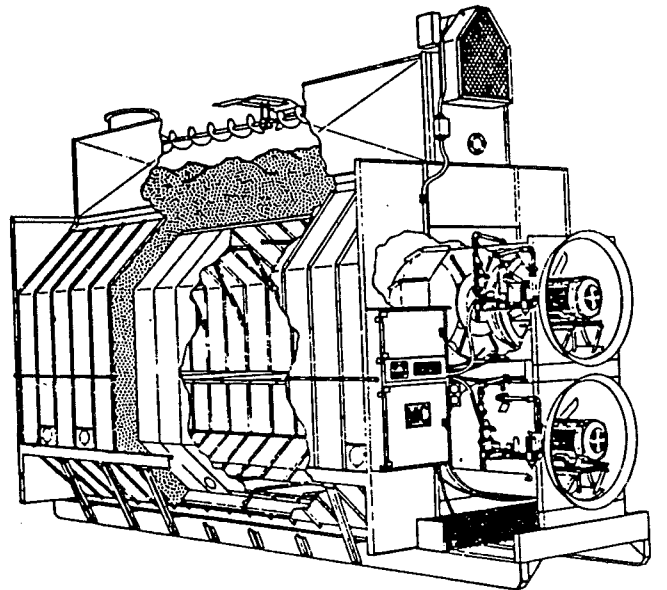
Form No. D 356 November 1999

**Mathews Company** / 500 Industrial Avenue  
P.O. Box 70, Crystal Lake, IL 60039-0070, U.S.A.  
815/459-2210 FAX 815/459-5889  
[www.mathewscompany.com](http://www.mathewscompany.com)

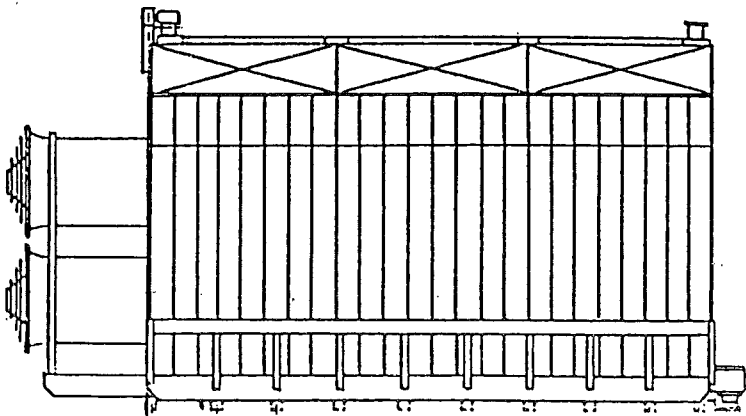
690



670



970



# CONTENTS

	Page
<b>Introduction</b>	
Parts Ordering Instructions .....	1
Model and Serial Number Location .....	1
Capscrew Grade Identification .....	1
<b>Parts</b>	
Air Pressure Switch .....	36
Air Stabilizer .....	19
Air Straighteners .....	18
Augers	
Level .....	32-35
Unload .....	2-5
Belts	
Level Auger .....	34
Unload Auger .....	16
Level Switch – Wet Hopper .....	36
Burner .....	19
Burner Target .....	18
Cabinets	
115V Control Cabinet – 670, 690 & 970 .....	28-30
Circuit Breakers - Level Auger, Unload Auger and Fan Motor .....	38-39
Coils	
Magnetic Starter - 115V .....	38-39
1 ¼" (31.8mm) Solenoid Valve .....	24-25
½" (12.7mm) Solenoid Valve .....	23
Contacts - For Magnetic Starters .....	40
Control Panel Lights, Switches and Controls .....	31
Decal Kit - All Models .....	7
Electrical Components in 115V Control Cabinet .....	30
Electrode .....	22
End Panels	
670 .....	10
690 .....	15
970 .....	12
Fans .....	20
Fan Installation Instructions D331 .....	27
Fan Motors .....	20
Fan Motor Mount .....	20
Fan Orifice .....	21
Fan Orifice Supports .....	21
Flame Sensing Probe .....	22
Floor Panels – 670 .....	10
– 970 .....	12

Continued on next page

	<b>Page</b>
Guards .....	
Fan .....	21
Level Auger Motor .....	32-33
SCR Drive .....	16
High Limit Switch .....	36
Wet Hopper .....	32-35
Ignition Board .....	30
Ignition Wires .....	22
Interlocks - For Magnetic Starters .....	40
Jumper Straps - For Magnetic Starters .....	40
Level Auger .....	32-35
Belts .....	32
Motor .....	32
Motor Mount .....	32
Switch Assembly (Wet Hopper Level Indicator) .....	36
Lights, Control Panel .....	31
LP Gas Liquid Line Piping .....	23
LP Gas Manifold and Piping .....	24
Magnetic Starters .....	38-39
Manifolds .....	
LP Gas .....	24
Natural Gas .....	25
Metering Rolls .....	2
Mixing Chamber .....	18
Modulating Valves .....	24-26
Modulating Valve Power Elements .....	24-25
Modulating Valve Repair Kits .....	26
Moisture Control .....	
Potentiometer .....	31
Moisture Control Board .....	30
Thermistor Sensor .....	36
Motors .....	38-39
Natural Gas Manifold and Piping .....	25
Orifice Liners .....	18
Portabilities .....	41
Pressure Gauge (Gas) .....	24-25
Pressure Regulator (LP Gas) .....	24 & 26
Pressure Regulator (LP Gas) Repair Kit .....	26

Continued on next page

	Page
Relays .....	30
Relief Valve - LP Gas .....	23
 SCR Drive Unload System	
Control Board .....	30
Motor and Gear Box .....	16
Potentiometer.....	31
Screens	
Base Screens .....	7
Upper Screens.....	8-9
Solenoid Valves	
1 ¼" (31.8mm) - Natural Gas .....	24-25
½" (12.7mm) - LP Gas.....	23
Solenoid Valve Repair Kits.....	26
Switches, Control Panel.....	31
 Terminal Tracks .....	30
Thermistor.....	36
Thermometer.....	28
Timers	
0 to 3 Minute Adjustable - Level Auger .....	30
60 Minute Adjustable - Low Grain Level and Cold Grain.....	30
Transformers .....	28
 Unload Auger 10" (25.4cm)	
Auger .....	2-3
Belts.....	16
Extension Kits (Optional) 2 ft. (.61m), 4 ft. (1.22m), or 6 ft. (1.83m) .....	37
Motor .....	16
Pans.....	6
Unload Shut Off Switch.....	4
 Vaporizer Coil - LP Gas .....	19
 Walkway (Optional) .....	42

### NOTES

---



---



---



---



---



---



---



---

# INTRODUCTION

## Parts Ordering Instructions

1. Order parts from your local M-C Dealer or distributor.
2. Always furnish the Grain Dryer model and serial number. This information is stamped on the serial number plate.
3. When ordering parts be sure to furnish the part number, description and quantity required.

**NOTE:** Attaching hardware is listed (but not included) with the main part. It must be ordered separately.

4. Inspect all shipments upon receipt. If any packages and/or boxes are missing, or parts are damaged, file a claim with the carrier immediately. Failure to do so may void a claim. Check the shipment against the packing list carefully. Report any shortages to the shipper immediately.
5. Do not return any parts to the Mathews Company without a "Return Goods Authorization" from the factory. All return parts shipments must be shipped prepaid (COD shipments will not be accepted). Shipments must also include the following:
  - A. A letter of explanation including the "Return Goods Authorization Number," your name and address.
  - B. A list of all parts being returned. List must include part numbers, description, quantity, and original invoice number.

## Model and Serial Number Location

The model and serial number of your Grain Dryer are stamped on a plate located on the left front end

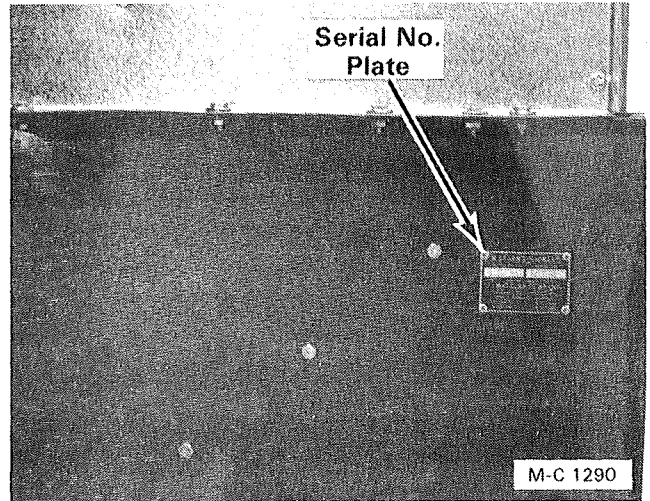


Figure 1

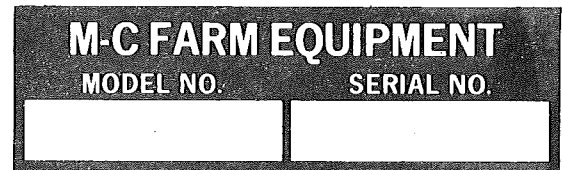


Figure 2

panel, see Figure 1. On late production dryers, the plate is on the dryer front base panel just below the location shown in Figure 1. Record the model and serial number in the blank spaces in Figure 2.

## Capscrew Grade Identification

There are four grades of hex-head capscrews. Grade 1 and 2 are common capscrews, grade 5 and 8 are used when greater strength is required. Each grade can be identified by the marking on the head of the capscrew, see chart below.

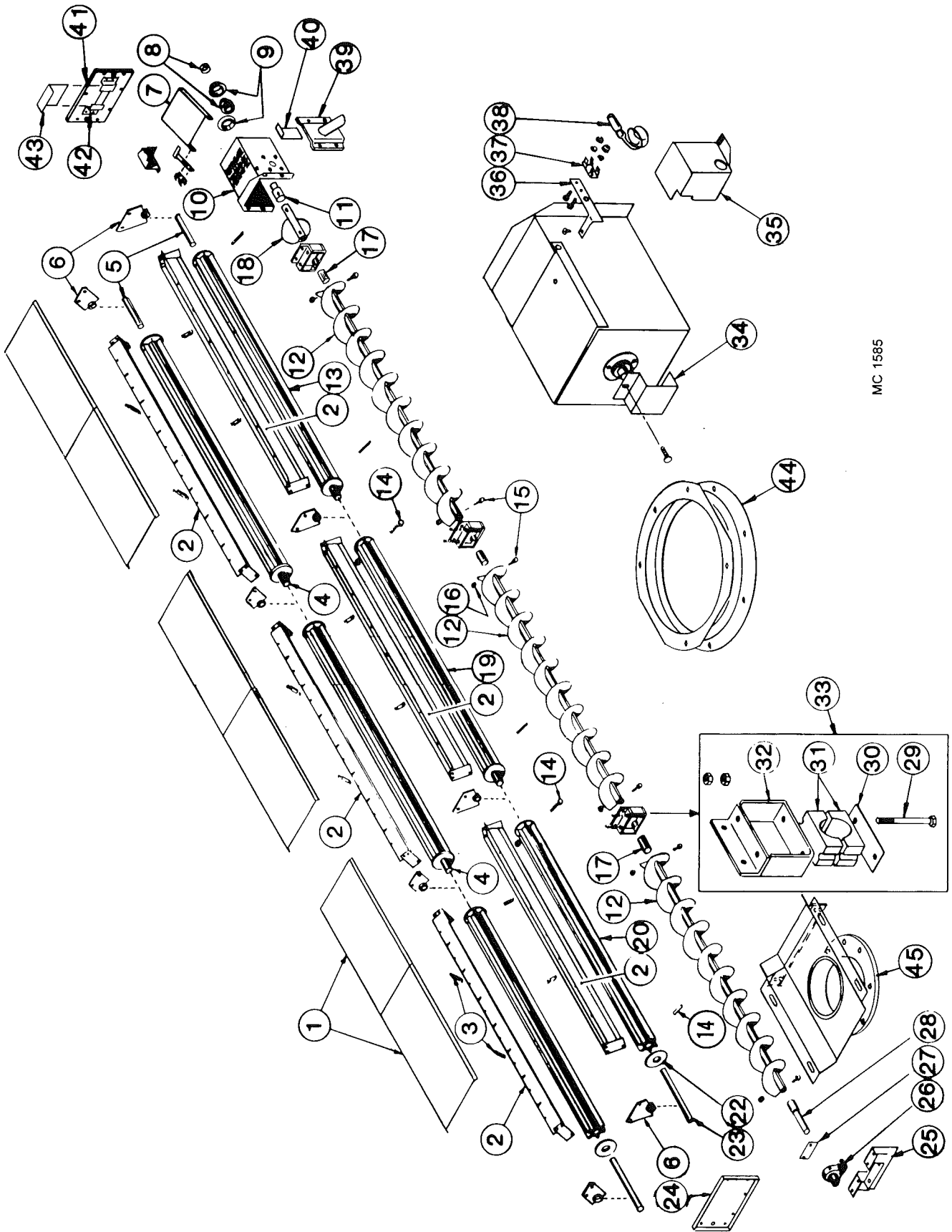
When replacing capscrews, be sure to use the correct size and grade. If a specific grade is not shown as part of the description, the capscrew is a grade 1 or 2.

### CAPSCREW GRADE IDENTIFICATION CHART

S.A.E. Grade	Description	Capscrew Head Marking*
1	WILL HAVE A PLAIN HEAD - NO RADIAL LINES	
2	Low or Medium Carbon Steel Not Heat Treated	
5	WILL HAVE 3 RADIAL LINES Quenched and Tempered Medium Carbon Steel	
8	WILL HAVE 6 RADIAL LINES Quenched and Tempered Special Carbon or Alloy Steel	

\*The center marking identifies the capscrew manufacturer.

# Metering Rolls and Unload Auger



MC 1585

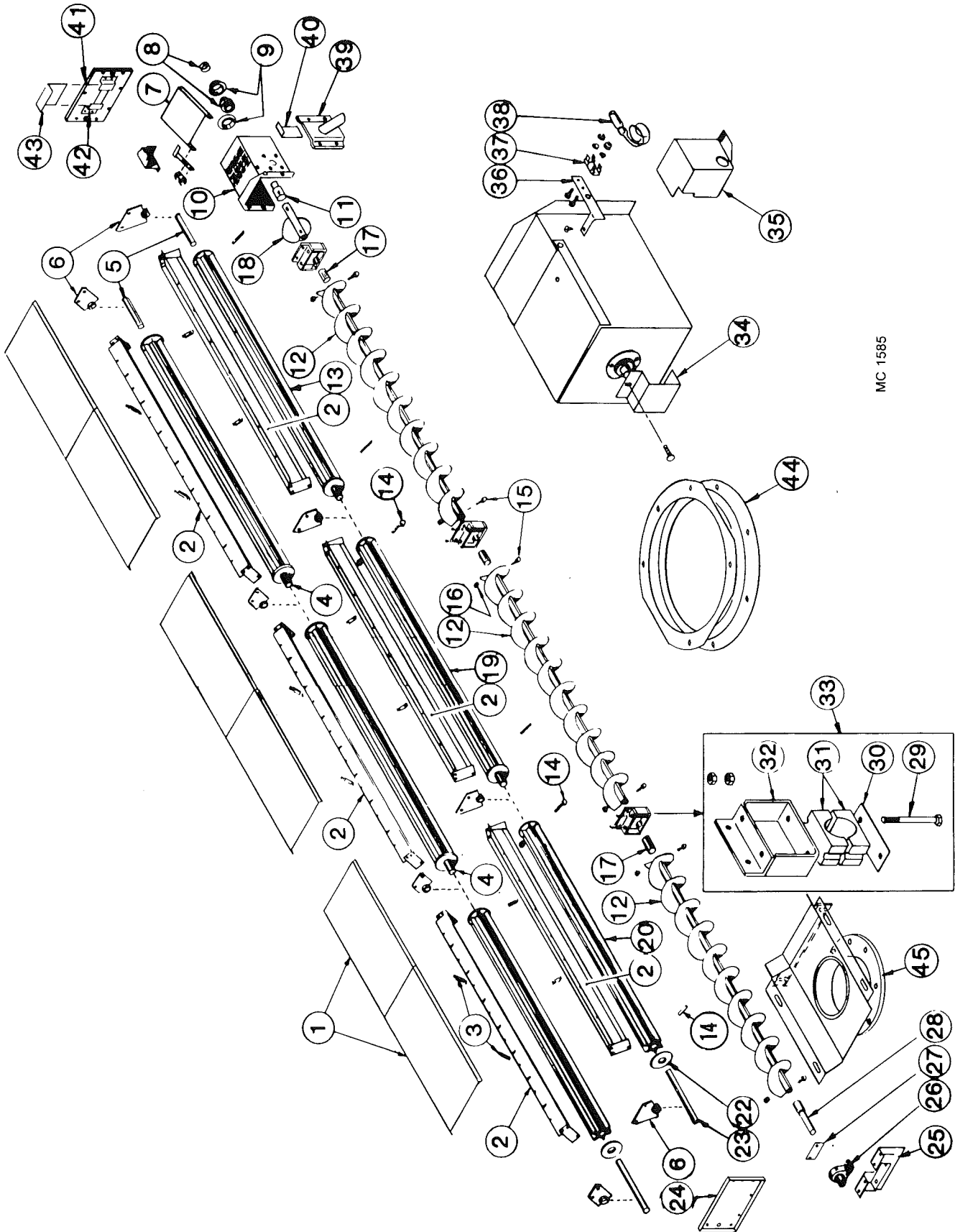
## Metering Rolls and Unload Auger

16 ft. 24 ft. (4.9m) (7.3m)		16 ft. 24 ft. (4.9m) (7.3m)					
Ref.	Part No.	Qty.	Description	Ref.	Part No.	Qty.	Description
1	128 2890	4	Unload Auger Cover	11	124 5611	1	Unload Auger Output Shaft (Front Unload - See Note 1)
	001 8111	8	5/16-18 (7.9mm) Clip Nut	12	128 0244	2	Unload Auger Section (10") (See Note 2)
	001 8114	8	5/16-18 x 3/4" (7.9x19mm) Wing Screw	13	121 1082	2	Rear Metering Roll Assembly (incl. shafts)
	000 8173	8	5/16" (7.9mm) Flatwasher	14	000 8114	8	5/16-18 x 2 1/2" (7.9x63.5mm) Capscrew
2	128 0350	4	Inner Screen Mount		000 8222	8	5/16" (7.9mm) Lockwasher
	001 8202	18	5/16-18 x 3/4" (7.9 x 19mm) Hex Washer Head Bolt		000 8159	8	5/16-18 (7.9mm) Hex Nut
	000 8169	18	5/16-18 (7.9mm) Flanged Locknut	15	000 8229	8	3/8-16 X 2 3/4" (9.5 x 70mm) Capscrew- Grd.5
3	128 8958	8	Support Rod 3/8" x 4 3/8" (9.5 x 111mm)	16	000 8205	8	3/8" (9.5mm) Top Lock Flanged Nut
	000 8173	8	5/16" (7.9mm) Flatwasher	17	128 5618	2	Unload Auger Link
	000 8168	24	3/8-16 (9.5mm) Flanged Locknut	18	128 0309	1	Standard Auger Weld
4	121 5043	2	Rear & Center Metering Roll Shaft - 1 1/4" x 7" (3.2 x 17.8cm)	19	121 1083	-	Center Metering Roll Assembly (incl. shafts)
5	121 5042	2	Rear Metering Roll Stub Shaft - 1 1/4" x 5" (3.2 x 12.7cm)	20	128 1254	2	Front Metering Roll Assembly (incl. shafts)
6	128 1063	6	Metering Roll Brg. w/Bronze Bushing	22	121 4438	AR	Metering Roll Washer - 11 Gauge
	001 8202	12	5/16-18 x 3/4" (7.9 x 19mm) Hex Washer Head Bolt		128 4970	AR	Metering Roll Washer - 16 Gauge
	000 8169	12	5/16-18 (7.9mm) Flanged Locknut	23	128 5042	2	Front Metering Roll Shaft - 1 1/4" x 13 3/4" (3.2 x 33.7cm)
7	128 4712	1	Over Load Door	24	128 2894	1	Base Panel Access Door - 17 1/2" x 10 1/2" (44.5 x 27cm)
	001 8210	2	3/8-16 x 3/4" (9.5 x 19mm) Hex Washer Head Bolt		001 8284	14	5/16-12 x 1/2" (7.9 x 12.7mm) Self Tapping Screw
8	000 8205	2	3/8-16 (9.5mm) Top Lock Flanged Nut	25	128 0247	1	Unload Auger Front Plate
	001 6003	1	1 1/4" (31.75mm) Bearing w/Lock Collar		001 8210	4	3/8-16 x 3/4" (9.5 x 19mm) Hex Washer Head Bolt
9	001 6004	2	1 1/4" (31.75mm) Bearing Flangette		000 8168	4	3/8-16 (9.5mm) Flanged Locknut
	001 8269	3	3/8-16 x 1" (9.5 x 25.4mm) Carriage Bolt	<b>NOTE 1: Dryers w/Front Unload - Ref. 10 use 127 4431 and Ref. 11 use 128 5994 output shaft.</b>			
	000 8168	3	3/8-16 (9.5mm) Flanged Locknut	<b>NOTE 2: Unload Auger Sections 10" (25.4cm) up to Serial #54014 use the following: 128 0243 Front 128 0245 Rear 128 0244 Center</b>			
10	128 0345	1	Unload Auger Discharge Round (Front Unload - See Note 1)				
	001 8210	6	3/8-16 x 3/4" (9.5 x 19mm) Hex Washer Head Bolt				
	000 8205	6	3/8-16 (9.5mm) Top Lock Flanged Nut				

Continued on next page



# Metering Rolls and Unload Auger

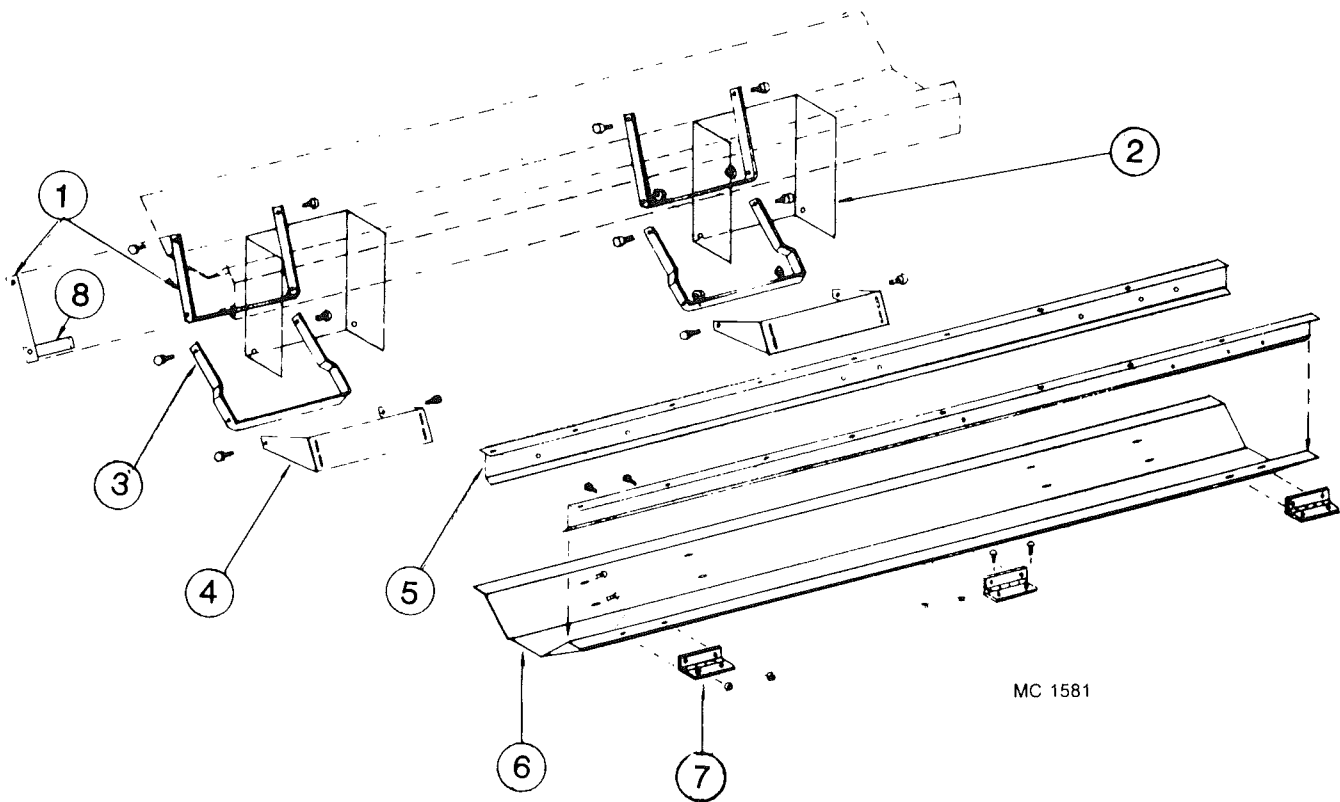


MC 1585

## Metering Rolls and Unload Auger

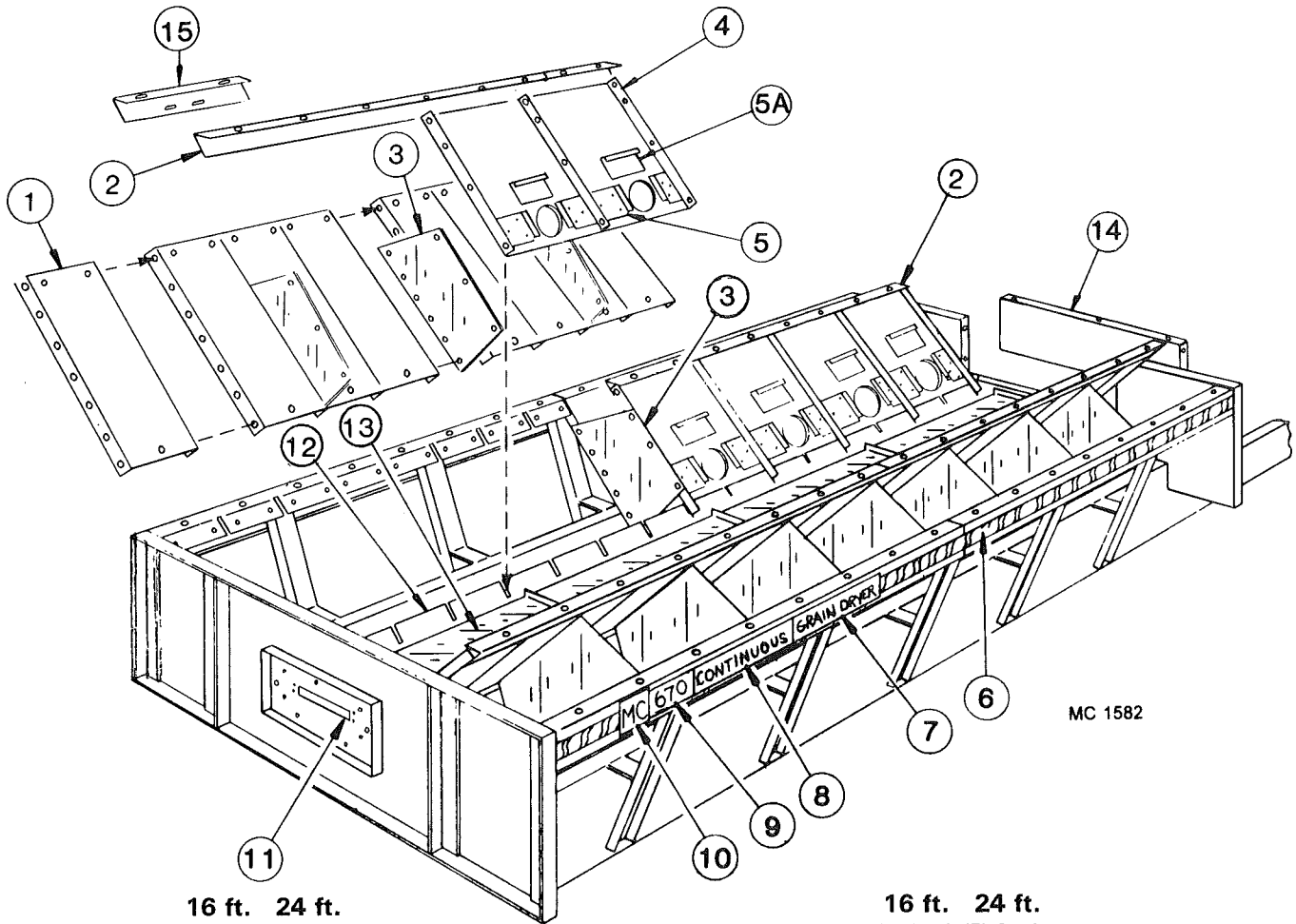
16 ft. 24 ft. (4.9m) (7.3m)				
Ref.Part No.	Qty.	Qty.	Description	
26	001 6011	1	1	1-7/16" (36.5mm) Bore Pillow Block Bearing
	001 8299	2	2	1/2-13 x 1 3/4" (12.7 x 44.5mm) Capscrew-Grd. 8 w/Nylock
	001 8257	2	2	1/2" (12.7mm) SAE Flatwasher
	000 8163	2	2	1/2-13 (12.7mm) Hex Nut
27	128 3008	1	1	Front Seal Plate
	000 8184	4	4	8-18 x 1/2" (12.7mm) Sheet Metal Screw
28	124 5610	1	1	Unload Auger Input Shaft
29	001 8168	4	6	1/2-13 x 4 1/2" (12.7 x 114.3mm) Capscrew - Grd. 5
	000 8163	8	12	1/2-13 (12.7mm) Hex Nut
30	128 0285	2	3	Unload Auger Support Weld
31	128 6020	2	3	Wood Bearing 1-15/16" (49.2mm) (2 Halves)
32	128 0287	2	3	Unload Auger Bearing Bracket
	000 8137	4	6	1/2-13 x 1 1/4" (12.7 x 31.75mm) Capscrew - Grd. 5
	000 8180	4	6	1/2" (12.7mm) Lockwasher
	000 8163	4	6	1/2-13 (12.7mm) Hex Nut
33	122 1007	2	3	Unload Auger Bearing Kit (Incl. Ref. 30 thru 33 in quantities required for one bearing)
34	128 3011	1	1	Output Shaft Guard
35	128 4896	1	1	Shut Off Switch Cover
	001 8284	2	2	5/16-12 x 1/2" (7.9 x 12.7mm) Self-Tapping Screw
36	128 2937	1	1	Switch Mount
37	120 6801	1	1	Switch Mount Clip
	000 8282	2	2	6-32 x 1/4" (6.35mm) Machine Screw
	000 8185	2	2	6-32 Flanged Locknut
38	120 6800	1	1	Shut Off Switch
39	128 0341	1	1	Grain Sampler
40	128 2842	1	1	Slide Gate Door - Sampler
41	128 2954	1	1	Base Panel Access Door w/Slot
42	128 2885	2	2	Access Door Bracket
43	128 2887	1	1	Access Door Slot Cover
44	128 0343	1	1	Discharge Ring 10" (25.4cm)
45	128 0331	1	1	10" (25.4cm) Front Unload Weldment (Optional Kit #127 9119)

## UNLOAD AUGER PANS



Ref.	Part No.	Qty.		Description
		(16')	(24')	
1	128 2029	4	6	Auger Dump Arm - Upper
2	128 8355	4	6	Warning Decal (not shown)
3	128 2030	4	6	Auger Dump Arm - Lower
4	128 2751	4	6	Bottom Link Pivot Base
5	128 2673	4	6	Pan Hinge Angle
6	128 2752	2	3	Auger Dump Pan
7	128 8957	6	9	Hinge
8	128 2032	4	6	Auger Dump Arm Handle

# BASE SECTION LOWER SCREENS

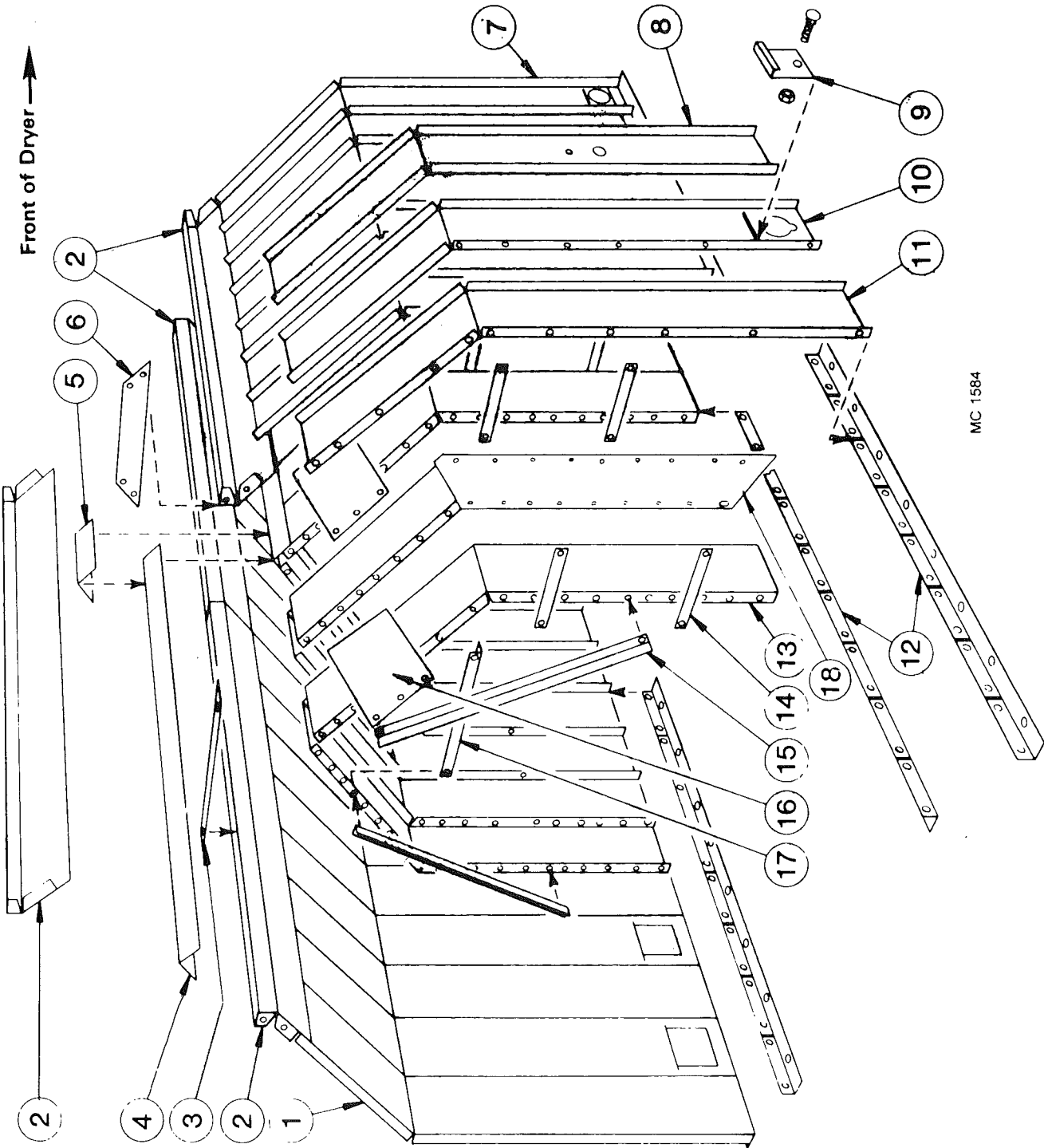


Ref.	Part No.	16 ft. (4.9m)		24 ft. (7.3m)		Description	Ref.	Part No.	16 ft. (4.9m)		24 ft. (7.3m)		Description
		Qty.	Qty.	Qty.	Qty.				Qty.	Qty.			
1	-----	-	-			Lower Outer Screen	10	128 8300	2	2			M-C Decal - 5" x 4-9/16" (13 x 10.7cm)
	123 5215	32	48			Standard Aluminum - 3/32"	11	128 2954	1	1			Base Panel Access Door w/Slot
	127 2945	32	48			Small Seed (Galv.) - 1/16"		001 8284	7	7			5/16-12x1/2" (7.9 x12.7mm) Self-Tapping Screw
2	128 2739	4	6			Lower Screen Mount Angle	12	128 0350	4	6			Inner Screen Mount
3	128 2855	14	22			Lower Screen Stiffener		001 8202	12	18			5/16-18 x 3/4" (7.9 x 19mm) Hex Washer Head Bolt
4	-----	-	-			Lower Inner Slope Screen w/Clean-Out - 24"(61cm) wide		000 8169	12	18			5/16-18 (7.9mm) Flanged Locknut
	124 2000	16	24			Standard Galvanized - 3/32"	13	128 2890	4	6			Unload Auger Cover
	124 2001	16	24			Small Seed (Galv.) -1/16"		001 8111	8	12			5/16-18 (7.9mm) Clip Nut
5	124 2866	32	48			Slope Door Retainer		001 8114	8	12			5/16-18 x 3/4" (7.9 x 19mm) Wing Screw
	000 8244	96	144			8-18 x 1/2" (12.7mm) Hex Head Sheet Screw		000 8173	8	12			5/16" Flatwasher
5A	128 3003	16	24			Slope Door	14	128 4570	1	1			Base Filler Panel-37x13 1/2"
6	128 8310	24'	39'			Red & Yellow Stripe Decal - 2 1/2" (6.35cm)		001 8209	12	12			5/16 x 1" (9.5 x 25.4mm) Hex Washer Head Bolt Grd. 5
7	128 8309	2	2			"Grain Dryer" Decal		000 8168	12	12			5/16 Flanged Locknut
8	128 8308	2	2			"Continuous" Decal	15	120 3070	2	4			Seal Angle
9	128 8361	2	-			"670" Base Decal							
	128 8367	2	-			"690" Base Decal							
	128 8362	-	2			"970" Base Decal							

## Decal Kit - All Models - 128 9017

Kit contains all decals except dryer model decals. They must be ordered separately. See ref. 9, page 7; ref. 14 & 15, page 11; and ref. 18 & 19, page 13.

# UPPER SCREENS



## UPPER SCREENS

Ref.	Part No.	16 ft. 24 ft. (4.9m) (7.3m)		Description
		Qty.	Qty.	
1	----	-	-	<b>Outer End Screen w/o Quick Drain</b>
	021 2946	2	2	Standard (Galvanized) 3/32" (2.38mm) Holes
	127 2967	2	2	Small Seed (Galvanized) 1/16" (1.59mm) Holes
	123 5213	2	2	Aluminum 3/32" - .094" Holes
2	129 2832	4	6	Hopper Joiner Angle 3/32" (2.38mm) Holes
	124 2014	4	6	Hopper Joiner Angle .050" (1.27mm) Holes for Small Seed Screens
3	129 2947	2	3	Stiffener Strap
4	021 2950	2	3	Hopper Cap
5	128 3075	1	2	Seal Angle
6	129 2831	1	2	Joiner Plate
7	----	-	-	<b>Outer End Screen w/Quick Drain</b>
	128 3002	2	2	Standard (Galvanized)
	127 2963	2	2	Small Seed (Galvanized)
	123 5210	2	2	Aluminum
8	----	-	-	<b>Moisture Control Screen</b>
	021 2947	1	1	Standard (Galvanized)
	127 2966	1	1	Small Seed (Galvanized)
	123 5214	1	1	Aluminum
9	----	-	-	<b>Quick Drain Door</b>
	127 2950	16	24	Standard (Galvanized)
	127 2974	16	24	Small Seed (Galvanized)
	000 8310	16	24	3/8-16 x 3/4" (9.5x19mm) Carriage Bolt-Stainless
	000 8168	16	24	3/8-16 (9.5mm) Flanged Locknut
10	----	-	-	<b>Outer Screen w/Quick Drain</b>
	128 3001	14	22	Standard (Galvanized)
	127 2965	14	22	Small Seed (Galvanized)
	123 5212	14	22	Aluminum
11	----	-	-	<b>Outer Screen w/o Quick Drain</b>
	021 2945	13	21	Standard (Galvanized)
	127 2964	13	21	Small Seed (Galvanized)
	123 5211	13	21	Aluminum
12	125 2732	8	12	Screen Mount Angle
13	----	-	-	<b>Inner Screen</b>
	021 2949	32	48	Standard (Galvanized) 3/32" (2.38mm) Holes
	127 2968	32	48	Small Seed (Galvanized) 1/16" (1.59mm) Holes
14	121 3007	60	92	Stiffener Strap
15	128 2663	14	22	Inner Brace
16	128 3072	14	22	Peak Screen Stiffener
17	021 2600	7	11	Inner Cross Tie
18	128 3076	2	4	Divider Panel

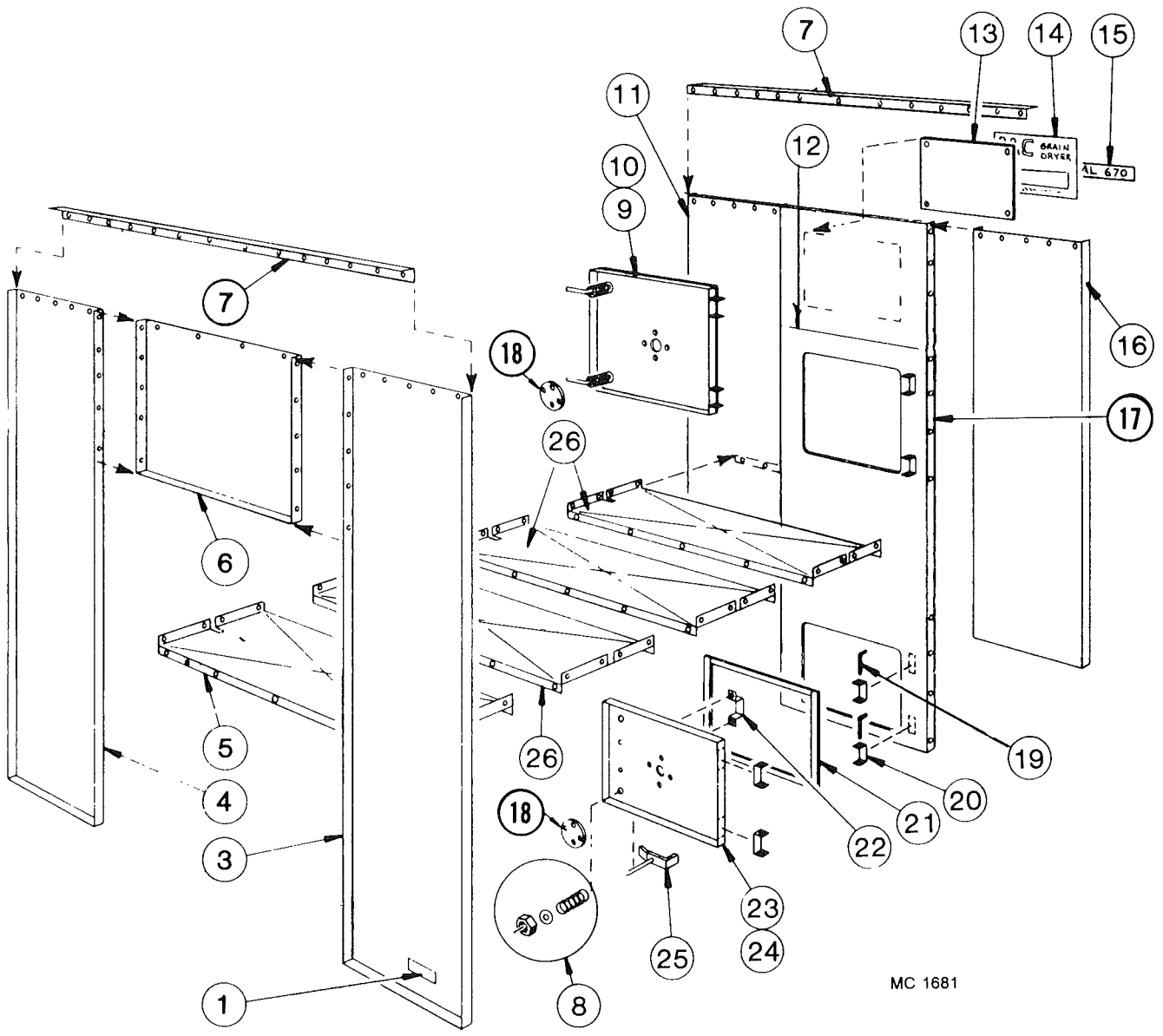
**Hardware to Bolt Screens Together:**

Inside:	001 8208	5/16-18 x 1/2" (7.9 x 12.7mm) Washer Head Hex Bolt
	001 8202	5/16-18 x 3/4" (7.9 x 19.0mm) Washer Head Hex Bolt
	000 8103	5/16-18 x 1/2" (7.9 x 12.7mm) Slotted Truss Round Head Bolt
	000 8169	5/16" (7.9mm) Flanged Whiz Locknut

Outside:	000 8305	5/16-18 x 1/2" (7.9 x 12.7mm) Washer Head Hex Bolt-Stainless
	000 8308	5/16-18 x 1/2" (7.9 x 12.7mm) Slotted Truss Round Head Bolt-Stainless
	000 8307	5/16-18 x 3/4" (7.9 x 19.0mm) Slotted Truss Round Head Bolt-Stainless
	000 8304	5/16" (7.9mm) Flanged Whiz Locknut-Stainless

# End Panels and Floor Panels (Model 670)

FRONT  
←



MC 1681

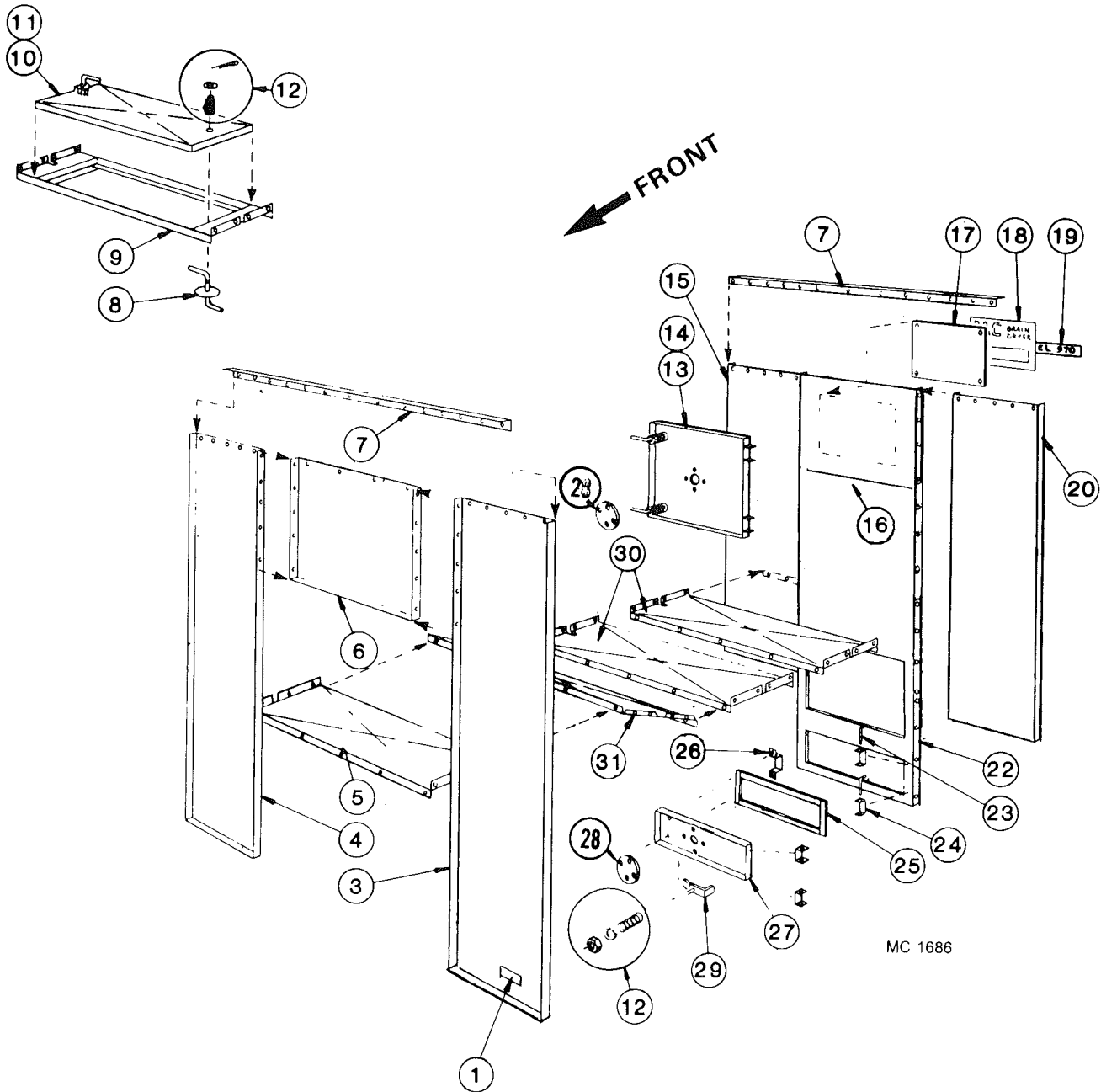
## End Panels and Floor Panels (Model 670)

Ref.	Part No.	Qty.	Description
1	121 8310	1	"Made in USA" - Decal
2			Blank
3	124 2836	1	Left Front Panel
4	124 2835	1	Right Front Panel
5	128 2920	1	Front Unit Floor Panel
6	128 2921	1	Panel Above Fan
7	021 2602	2	End Panel to Hopper Joiner Angle
8	001 8256	4	Spring – 5/8" ID x 2" (15.9 x 51mm)
	000 8174	4	3/8" (9.5mm) Flatwasher
	001 8149	4	Hex 2-Way Locknut Z.P.
9	128 1183	1	Upper Rear Door Assembly (Incl. ref. 8, 10, 18, 20, 21, 22 & 25)
10	128 2957	1	Upper Rear Door Only
11	021 2832	1	Right Rear End Panel
12	124 4463	1	End Door Panel Brace
13	128 2999	1	Decal Mount Plate
14	128 8331	1	Large Decal - See note
15	128 8359	1	Model 670 Decal
16	021 2833	1	Left Rear End Panel
17	128 2773	1	End Door Panel
18	129 5709	2	Port View Lens
	000 8212	8	¼"-20 x ½" (6.35 x 12.7mm) Truss Head Screw
	000 8167	8	¼"-20 (6.35mm) Flanged Locknut
19	128 5201	4	Hinge Pin
20	128 2740	8	Door Hinge
	000 8212	16	¼"-20 x ½" (6.35 x 12.7mm) Truss Head Screw
	000 8167	16	¼"-20 (6.35mm) Flanged Locknut
21	128 8900	AR	Rubber Edge Seal
22	121 2887	2	Door Handle
	128 8251	4	8-18 x ½" (12.7mm) Sheet Metal Screw
23	128 1902	1	Lower Rear Door Assembly (Incl. ref. 8, 18, 20, 21, 22, 24 & 25)
24	128 3006	1	Lower Rear Door Panel Only
25	121 8901	4	Latch and Handle
26	121 2928	7	Unit Floor Panel

**NOTE:** This decal is imprinted "Model 975." Order (1) of Ref. 15 to be placed over "Model 975."



# End Panels and Floor Panels (Model 970)



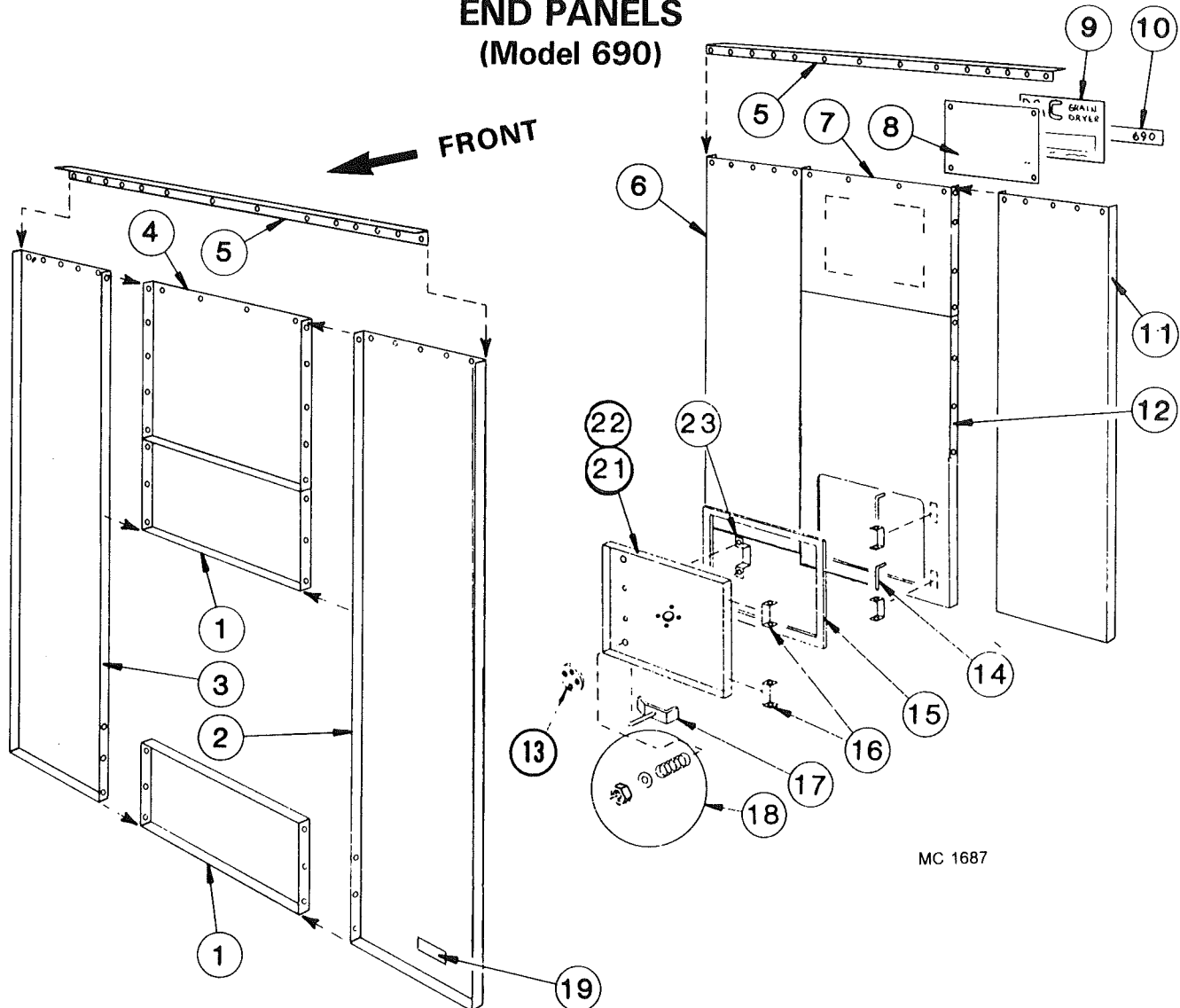
## End Panels and Floor Panels (Model 970)

Ref.	Part No.	Qty.	Description
1	121 8310	1	"Made in USA" - Decal
2			Blank
3	124 2836	1	Left Front Panel
4	124 2835	1	Right Front Panel
5	128 2920	1	Front Unit Floor Panel
6	128 2921	1	Panel Above Fan
7	021 2602	2	End Panel to Hopper Joiner Angle
8	121 0302	4	Latch and Handle
9	121 0299	2	Heat Chamber Door Frame
10	121 1113	2	Heat Chamber Door Assembly (Incl. ref. 12)
11	121 2970	2	Heat Chamber Door Panel
12	001 8256	-	Spring - 5/8" ID x 2" (15.9mm x 51mm)
	000 8174	-	3/8" (9.5mm) Flatwasher
	001 8149	-	3/8" (9.5mm) Hex 2-Way Locknut
13	128 1183	1	Upper Rear Door Assembly (Incl. ref. 12, 14, 24, 25, 26, 28 & 29)
14	128 2957	1	Upper Rear Door Panel
15	021 2832	1	Right Rear End Panel
16	124 4463	1	End Door Panel Brace
17	128 2999	1	Decal Mount Plate
18	128 8331	1	Large Decal - See note
19	128 8360	1	Model 970 Decal
20	021 2833	1	Left Rear End Panel
21			Blank
22	128 2772	1	End Door Panel
23	128 5201	4	Hinge Pin
24	128 2740	8	Door Hinge
25	128 8900	AR	Rubber Edge Seal/ft.
26	121 2887	2	Door Handle
	128 8251	4	8-18 x 1/2" (12.7mm) Sheet Metal Screw
27	128 3009	1	Rear Door
28	129 5709	2	Port View Lens
	000 8212	8	1/4"-20 x 1/2" (6.35 x 12.7mm) Truss Head Screw
	000 8167	8	1/4"-20 (6.35mm) Flanged Locknut
29	121 0414	3	Latch and Handle
30	121 2928	8	Unit Floor Panel
31	124 2845	1	Slope Unit Floor Panel

**NOTE:** This decal is imprinted "Model 975." Order (1) of Ref. 19 to be placed over "Model 975."

**This page intentionally blank.**

## END PANELS (Model 690)



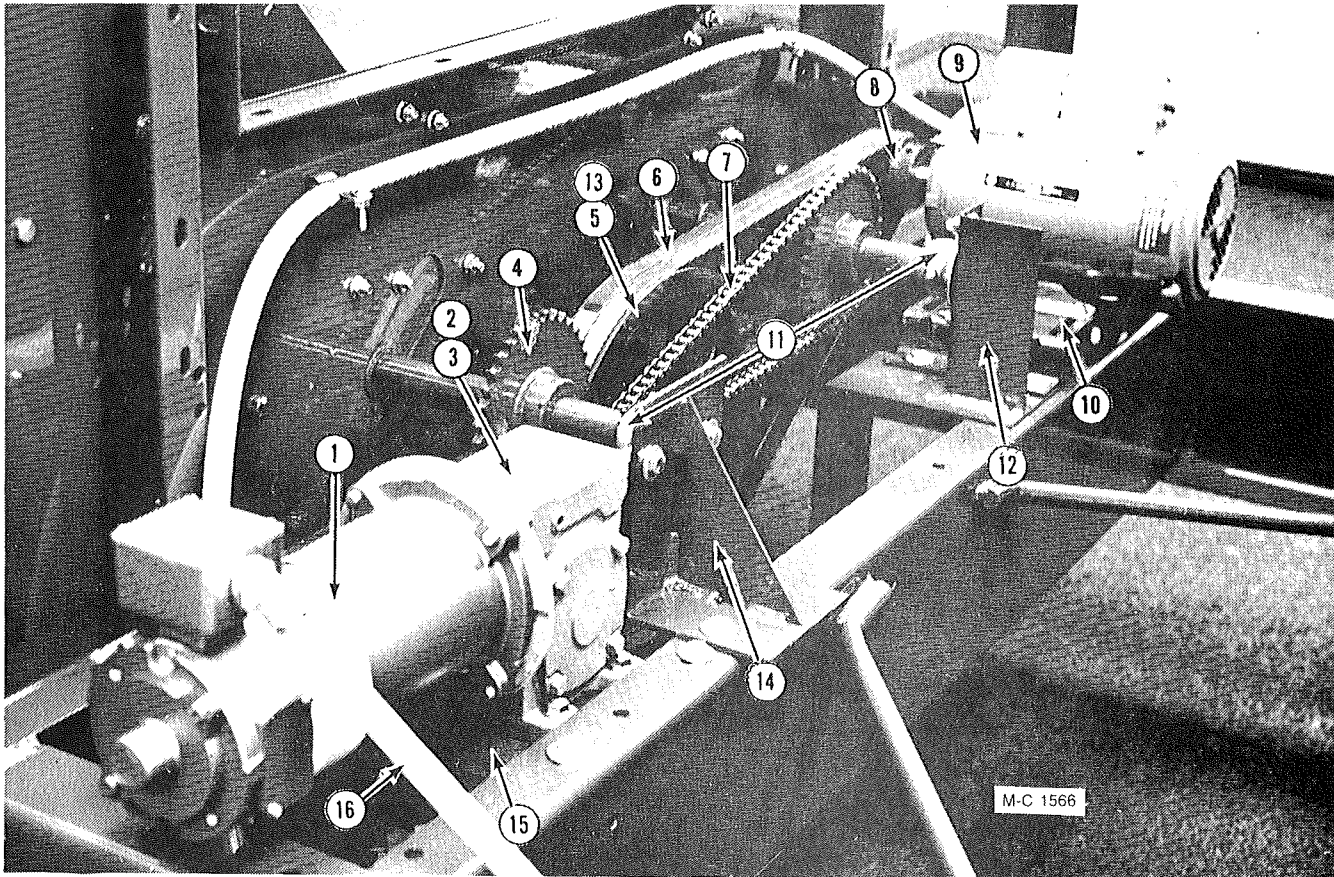
MC 1687

Ref. Part No.	Qty.	Description
1 128 4969	2	Spacer Panel
2 124 2836	1	Left Front Panel
3 124 2835	1	Right Front Panel
4 128 2921	1	Panel Above Fan
5 021 2602	2	End Panel to Hopper Joiner Angle
6 021 2832	1	Right Rear End Panel
7 124 4463	1	End Door Panel Brace
8 128 2999	1	Decal Mount Plate
9 128 8331	1	Large Decal - See note
10 128 8368	1	Model 690 Decal
11 021 2833	1	Left Rear End Panel
12 128 2771	1	End Door Panel 690
13 129 5709	1	Port View Lens
000 8212	4	1/4"-20 x 1/2" (6.35x12.7mm) Truss Head Screw
000 8167	4	1/4"-20 (6.35mm) Flanged Locknut
14 128 5201	2	Hinge Pin

Ref. Part No.	Qty.	Description
15 128 8900	AR	Rubber Edge Seal/ft.
16 128 2740	4	Door Hinge
000 8212	8	1/4"-20 x 1/2" (6.35x12.7mm) Truss Head Screw
000 8167	8	1/4"-20 (6.35mm) Flanged Locknut
17 121 8901	2	Latch and Handle
18 001 8256	2	Spring-5/8"IDx2"(15.9x51mm)
000 8174	4	3/8" (9.5mm) Flatwasher
001 8149	2	3/8" (9.5mm) Hex 2-Way Locknut
19 121 8310	1	"Made in USA" - Decal
20		Blank
21 128 1183	1	Rear Door Assembly (Incl. ref. 13, 15 thru 18, 22, & 23)
22 128 2957	1	Rear Door Panel Only
23 121 2887	1	Door Handle
128 8257	2	8-18 x 1/2" (12.7mm) Sheet Metal Screw

**NOTE:** This decal is imprinted "Model 975."  
Order ref.10 to be placed over "Model 975."

## SCR DRIVE MOTOR AND GEAR BOX

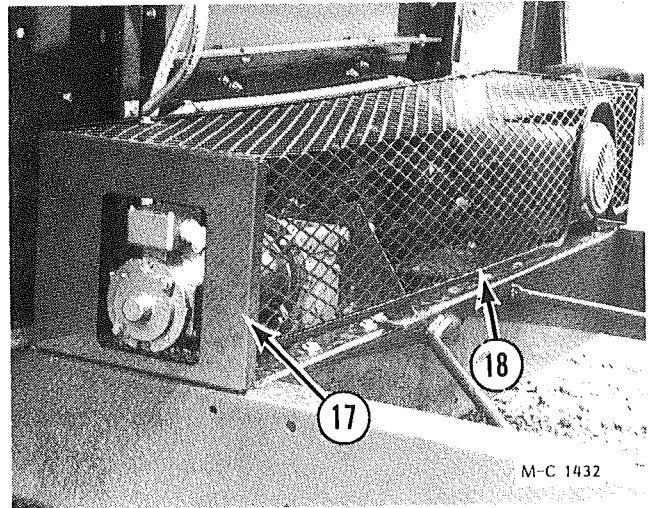


Ref. Part No.	Qty.	Description	Ref. Part No.	Qty.	Description		
1	124 6837	1	DC Motor - 1/3 HP	9	127 6860	1	230/460V 1.5HP 3Ø Motor- 670 & 690
	122 8613	-	DC Motor Brushes - Baldor	121 6861	1	230/460V 2HP 3Ø Motor - 970	
2	124 6624	1	SCR Gear Box w/ 3/16" x 1" Key (4.8x25.4mm) - 0015110	127 6863	1	230V 1.5HP 1Ø Motor - 670 & 690	
	128 8947	1	Pint of Mobil SHC 634 Oil	121 6862	1	230V 2HP 1Ø Motor - 970	
	000 8123	5	3/8-16 x 1 1/4" (9.5 x 31.8mm) Capscrew	001 5112	1	Key - 3/16" x 1 3/8" (4.8 x 34.9mm) for 1 1/2HP Motor - 670 & 690	
	000 8174	5	3/8" (9.5mm) Flatwasher	001 5114	1	Key - 3/16" x 1 3/8" (4.8 x 41.3mm) for 2HP Motor - 970	
	000 8168	5	3/8" (9.5mm) Flanged Locknut	128 1	1	Motor to Cabinet Wire Assembly	
3	128 6427	1	SCR Gear Box Sprocket RC40- 10T 3/4" (19mm) ID - 670 & 690 (not shown)	000 8110	1	5/16-18 x 1 1/2" (7.9 x 38.1mm) Hex Bolt	
	128 6422	1	Sprocket RC40-12T 3/4" (19mm) ID - 970	001 8213	3	5/16-18 x 1" (7.9 x 25.4mm) Washer Head Bolt	
4	128 6426	2	Metering Roll Sprocket RC40- 40T 1 1/4" (31.75mm) ID - 670 & 690	000 8173	4	5/16" (7.9mm) Flatwasher	
	128 6423	2	Sprocket RC40-36T 1 1/4" (31.75mm) ID - 970	000 8169	4	5/16-18 (7.9mm) Flanged Locknut	
	000 8298	2	Woodruff Key 1/4" x 3/4" (6.35 x 19mm)	10	124 4214	1	Unload Auger Motor Mount
5	021 6201	1	Pulley - 2B x 13.6 SK	001 8209	2	3/8-16 x 1" (9.5 x 25.4mm) Washer Head Bolt	
	001 5130	1	Key - 3/8" x 1" (9.5 x 25.4mm)	001 8210	3	3/8-16 x 3/4" (9.5 x 19mm) Washer Head Bolt	
6	021 6100	1	B-65 Belts (Matched Set-2)	001 8132	2	3/8-16 x 4" (9.5 x 101.6mm) "J" Bolt	
7	128 6315	1	Chain - RC40 x 130 Pitch	000 8174	5	3/8" (9.5mm) Flatwasher	
	002 6309	-	Connecting Link	000 8168	5	3/8-16 (9.5mm) Flanged Locknut	
8	121 6210	1	Pulley - 2B - 3-3/16" (80.96mm) OD - 3/8" (15.87mm) ID				
	121 6203	1	Pulley - 2B - 3-3/16" (80.96mm) OD - 7/8" (22.2mm) ID				

Continued on next page

## SCR Drive Motor and Gear Box

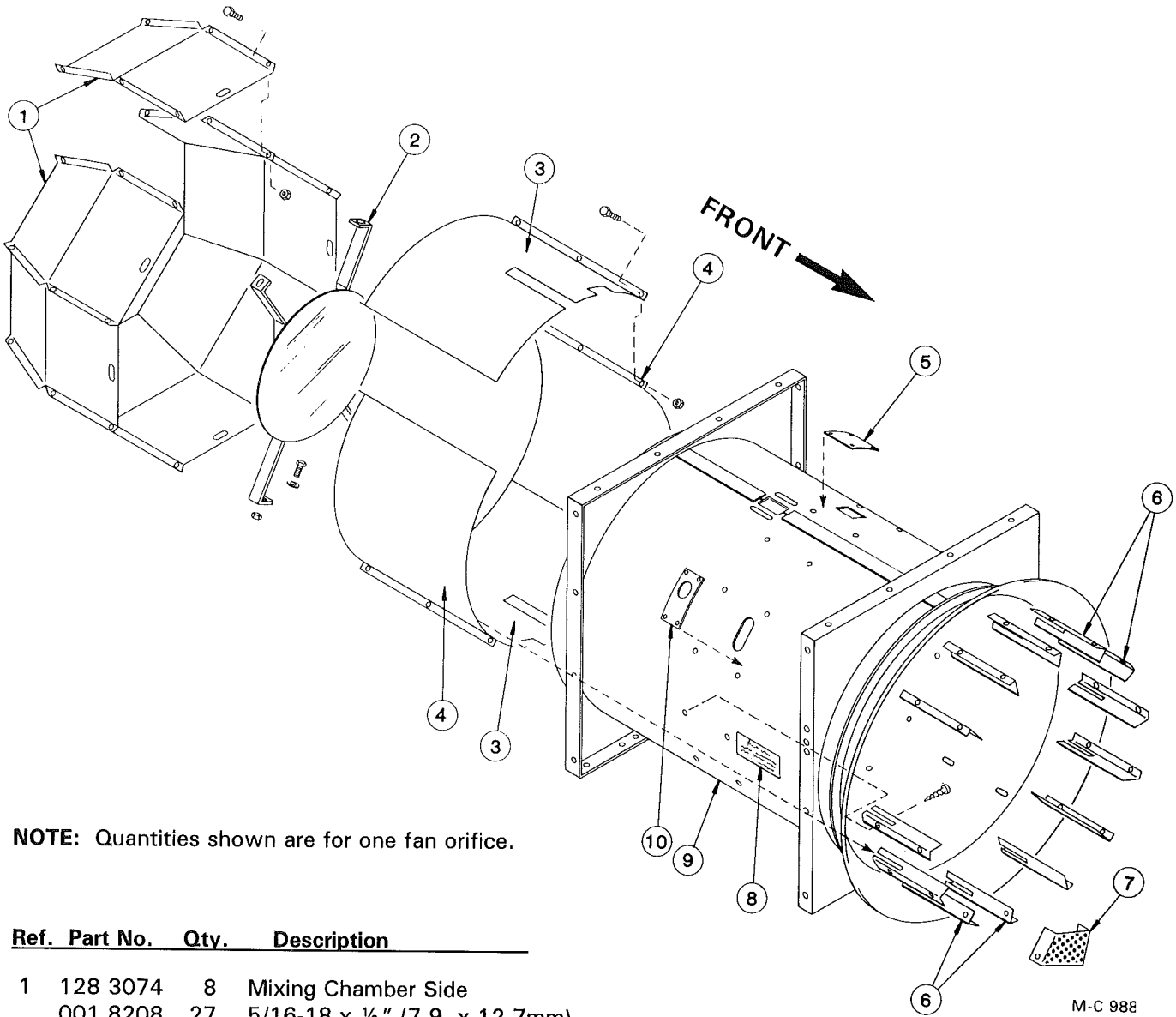
Ref.	Part No.	Qty.	Description
11	121 6022	2	1 ¼" (31.75mm) Outboard Bearing
	000 8121	4	⅝-16 x 1" (9.5 x 25.4mm) Capscrew
	000 8174	4	⅜" (9.5mm) Flatwasher
	000 8168	4	⅝-16 (9.5mm) Flanged Locknut
12	128 0257	1	Gear Mount Motor Weld.
	000 8119	4	⅝-16 x ¾" (9.5 x 19mm) Capscrew
	000 8174	4	⅜" (9.5mm) Flatwasher
	000 8168	4	⅝-16 (9.5mm) Flanged Locknut
13	001 6202	1	SK Bushing-1-7/16" (36.5mm) Bore (Incl. capscrews)
14	128 0191	1	Outboard Bearing Mount
15	124 4500	1	Gear Box Mount - 670 & 690
	124 4456	1	Gear Box Mount - 970
	000 8119	4	⅝-16 x ¾" (9.5 x 19mm) Capscrew
	000 8174	4	⅜" (9.5mm) Flatwasher
	000 8168	4	⅝-16 (9.5mm) Flanged Locknut
16	128 1999	1	SCR Motor to Cabinet Flexible Conduit 40" (102cm)
17	128 0268	1	Drive Guard
	128 8951	2	Rubber Strap w/Hook
	001 3302	2	Angle Clip
	000 8121	4	⅝-16 x 1" (9.5 x 25.4mm) Capscrew
	000 8174	6	⅜" (9.5mm) Flatwasher
	001 8149	4	⅝-16 (9.5mm) Two-Way Locknut
18	121 8957	AR	Rubber Guard Edge



**Not Shown:**

000 8301	2	Safety Shield Warning Decal
120 6914	2	Chase Nipple - ½" (12.7mm)
121 6906	2	Pipe Clamp
000 8212	2	¼-20 x ½" (6.35 x 12.7mm) Truss Head Screw
000 8167	2	¼-20 (6.35mm) Flanged Locknut

## Fan Orifice, Orifice Liners, Burner Target Mixing Chamber and Air Straighteners

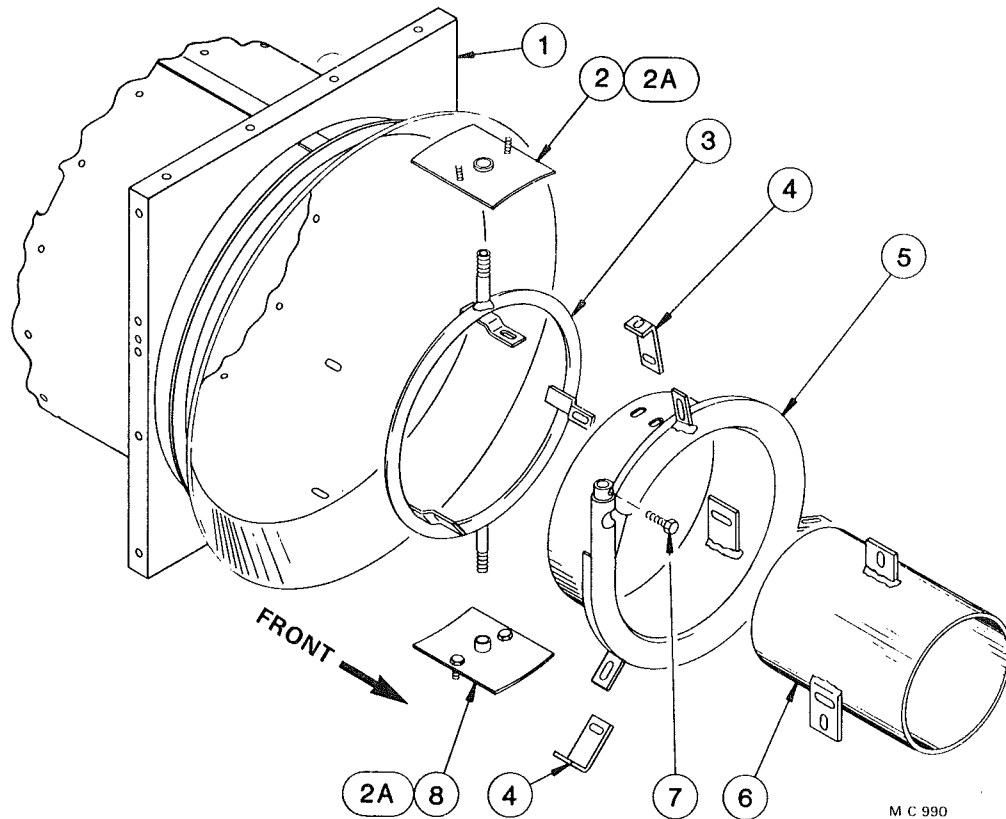


**NOTE:** Quantities shown are for one fan orifice.

Ref. Part No.	Qty.	Description
1 128 3074	8	Mixing Chamber Side
001 8208	27	5/16-18 x 1/2" (7.9 x 12.7mm) Capscrew
000 8169	27	5/16-18 Flanged Locknut
2 128 0280	1	Burner Target
001 8213	4	5/16-18 x 1" (7.9 x 25.4mm) Capscrew - Grade 5
000 8173	4	5/16" (7.9mm) Flatwasher
000 8169	4	5/16-18 Flanged Locknut
3 124 2830	2	Orifice Liner
000 8238	12	5/16-18 x 1/2" (7.9 x 12.7mm) Capscrew
000 8169	12	5/16-18 Flanged Locknut
4 123 5205	2	Orifice Liner
001 8208	12	5/16-18 x 1/2" (7.9 x 12.7mm) Capscrew
000 8169	12	5/16-18 Flanged Locknut

Ref. Part No.	Qty.	Description
5 121 2978	1	Orifice Cover Plate
001 8104	4	1/4-20 x 1/2" (6.35 x 12.7mm) Self Tapping Screw
6 124 2831	13	Air Straightener - Slotted
001 8103	26	10-24 x 1/2" (12.7mm) Self Tapping Screw
7 128 3004	1	Eddy Baffle
001 8106	2	10-32 x 3/4" (19mm) Machine Screw
000 8156	2	10-32 Nut
8 128 8363	1	Vaporizer Adj. Decal (LP Gas)
9 128 0267	1	Fan Orifice - All
10 124 2832	1	Inlet Pipe Seal
001 8297	3	8-18 x 3/4" (19mm) Self Tapping Screw

## Burner and Air Stabilizer

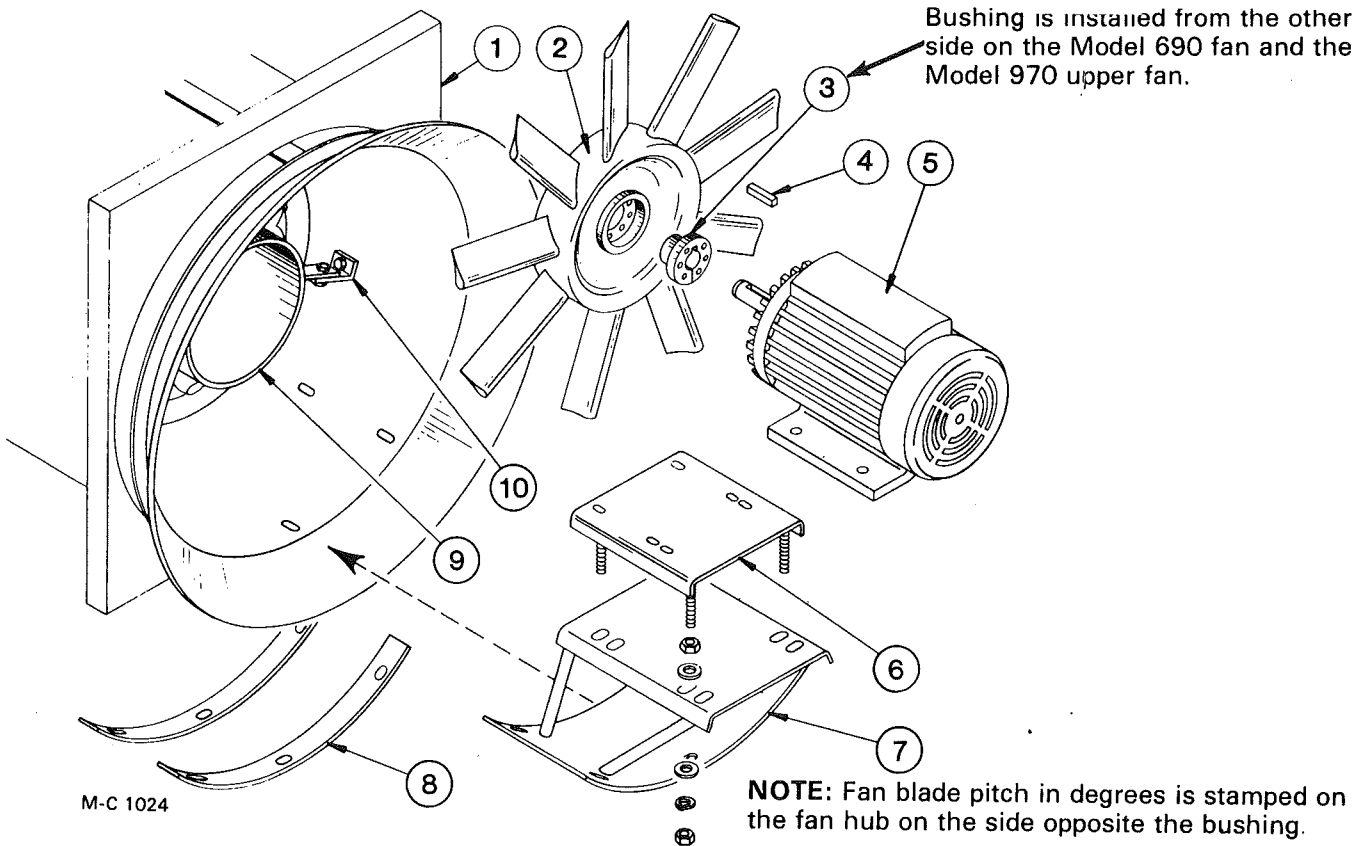


**NOTE:** Quantities shown are for one burner.

Ref. Part No.	Qty.	Description	Ref. Part No.	Qty.	Description
1	128 0267	1 Fan Orifice – All	5	128 0286	1 Ring Burner Weld.
2	128 0269	1 Vaporizer Seal – 3/4" (19mm) (LP Gas)	6	121 0131	1 Air Stabilizer
	000 8173	2 5/16" (7.9mm) Flatwasher	001 8209	3	3/8-16 x 1" (9.5 x 25.4mm) Washer Head Bolt
	000 8169	2 5/16-18 (7.9mm) Flanged Locknut	000 8174	3	3/8" (9.5mm) Flatwasher
2A	128 0279	1 Seal Plate (Natural Gas)	000 8168	3	3/8-16 (9.5mm) Flanged Locknut
	000 8173	2 5/16" (7.9mm) Flatwasher	7	128 8115	1 5/16-18 x 1" (9.5 x 25.4mm) Stainless Steel Bolt
	000 8169	2 5/16-18 (7.9mm) Flanged Locknut	8	128 0270	1 Vaporizer Seal – 1/2" (12.7mm) (LP Gas)
3	128 0274	1 Vaporizer Ring (LP Gas)	000 8173	2	5/16" (7.9mm) Flatwasher
	001 8209	3 3/8"-16 x 1" (9.5 x 25.4mm) Washer Head Bolt	000 8169	2	5/16-18 (7.9mm) Flanged Locknut
	000 8174	3 3/8" (9.5mm) Flatwasher			
	000 8168	3 3/8-16 (9.5mm) Flanged Locknut			
4	121 3459	3 Burner Mounting Angle			
	001 8209	6 3/8-16 x 1" (9.5 x 25.4mm) Washer Head Bolt			
	000 8174	6 3/8" (9.5mm) Flatwasher			
	000 8168	6 3/8-16 (9.5mm) Flanged Locknut			



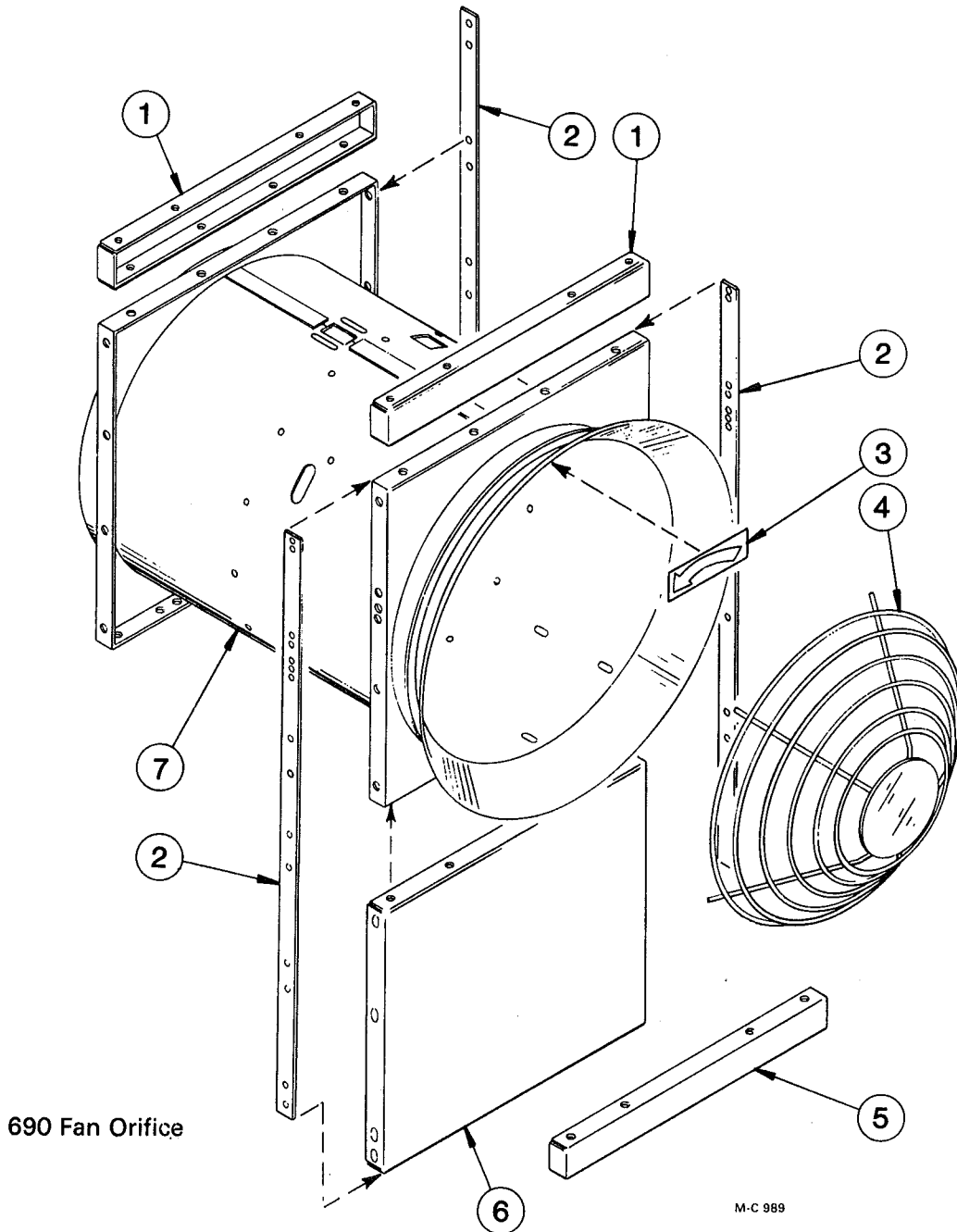
## Fans and Fan Motor Mount



**NOTE:** Quantities shown are for one fan assembly

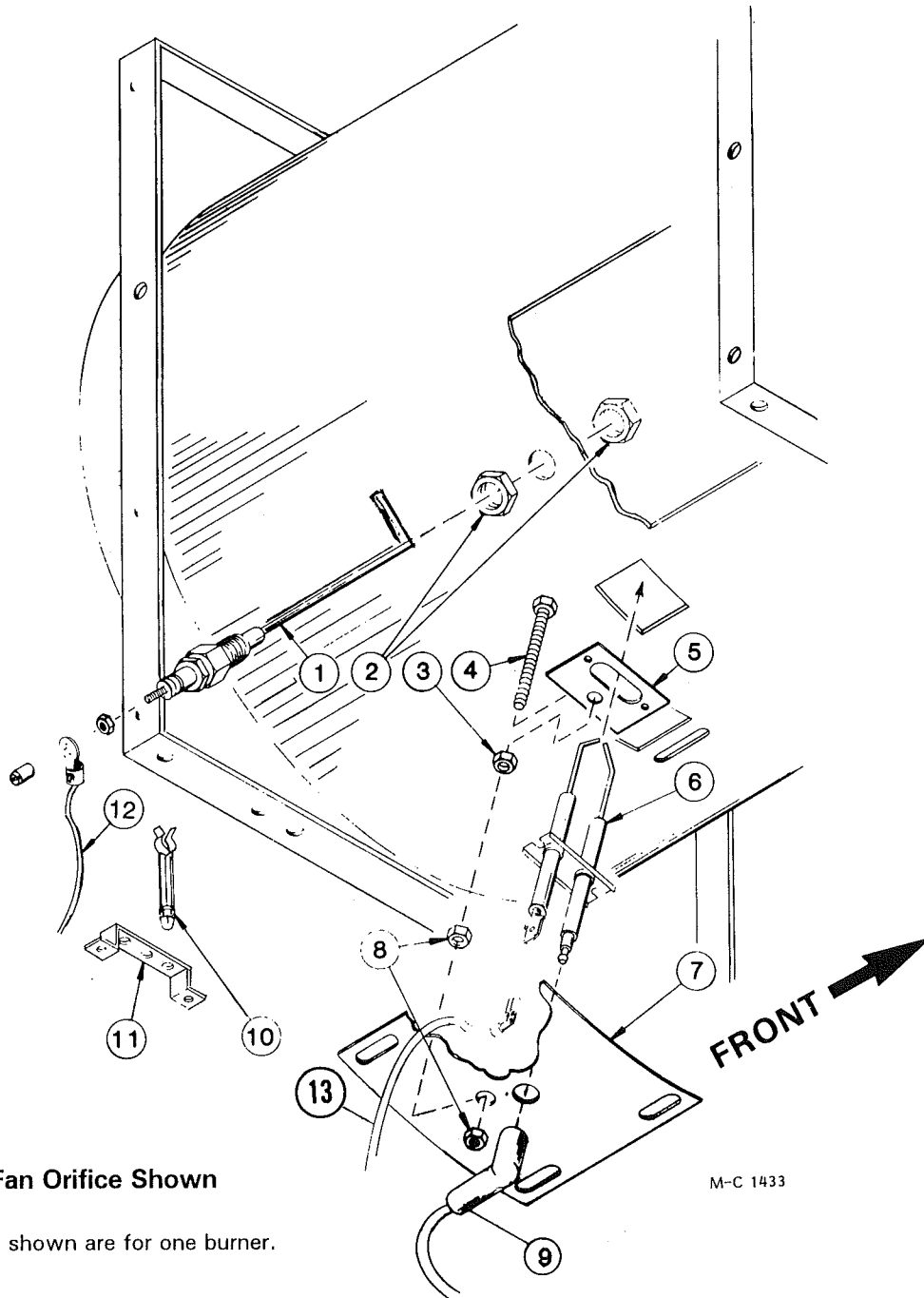
Ref. Part No.	Qty.	Description	Ref. Part No.	Qty.	Description
1	128 0267	1 Fan Orifice - All	124 6816	1	230/460V 7.5HP 1Ø Motor
2	-----	- Fan	124 6818	1	230/460V 10HP 1Ø Motor
	128 9043	1 670 Lower (6 blade 18°)	124 6879	1	230/460V 20HP 1Ø Motor
	128 9044	1 670 Upper and 970 Lower (9 blade 18°) w/Bushing			
	121 0272	1 690 and 970 Upper (12 blade 30°) w/Bushing	000 8293	4	3/8 -16 x 1 1/2" Capscrew (9.5 x 38.1mm) Full Thread (7.5 & 10HP motors)
3	121 6239	- "SK" Bushing - 1 3/8" (34.9mm) Bore (7.5 & 10HP motors)	000 8168	4	3/8 -16 (9.5mm) Flanged Locknut
	121 6229	- "SK" Bushing - 1 5/8" (41.3mm) Bore (20HP motors)	000 8139	4	1/2-13 x 1 3/4" (12.7 x 44.5mm) Capscrew (20HP motor)
	121 8117	3 5/16-18 x 2" (7.9x51mm) Socket Hd.Capscrew-Gr.5	000 8170	4	1/2-13 (12.7mm) Flanged Locknut
4	001 5124	1 Key - 5/16 x 2 3/8" (7.9 x 60.3mm) (7.5 & 10HP motors)	6	128 0167	1 Motor Mount (7.5 & 10HP motors)
	001 5139	1 Key - 3/8 x 3" (9.5x76.2mm) (20HP motor)		121 0343	1 Motor Mount (20HP motor)
5	-----	- Fan Motor	000 8165	8	3/4-10 (19mm) Hex Nut
	124 6948	1 230/460V 7.5HP 3Ø Motor	000 8177	8	3/4" (19mm) Flatwasher
	201 6818	1 230/460V 10HP 3Ø Motor	000 8182	4	3/4" (19mm) Lockwasher
	125 6934	1 230/460V 20HP 3Ø Motor	7	121 0258	1 Motor Mount Base
			000 8136	5	1/2-13 x 1" (12.7 x 25.4mm) Carriage Bolt
			000 8170	4	1/2-13 (12.7mm) Flanged Locknut
			8	121 3356	2 Orifice Reinforcement
			9	121 0131	1 Air Stabilizer
			10	121 3459	3 Burner Mounting Angle

## Fan Orifice Supports and Fan Guard



Ref.	Part No.	Qty.	Description
1	128 0273	2	Orifice Joiner Channel (670 & 970)
2	128 3463	3	Fan Housing Brace (690)
3	121 8301	1	Counterclockwise Arrow Decal
4	121 8956	-	Fan Guard
5	128 0272	1	Orifice Support Channel (670 & 970)
6	128 4445	1	Spacer Panel - Front (690)
7	128 0267	-	Fan Orifice - All

## Electrode and Flame Sensing Probe



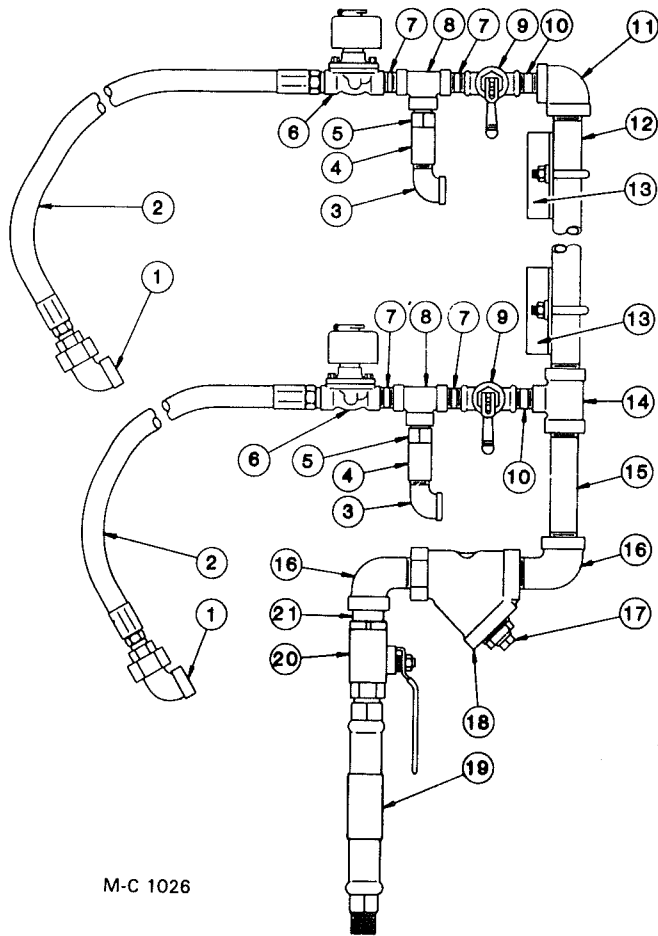
**Upper Fan Orifice Shown**

M-C 1433

NOTE: Quantities shown are for one burner.

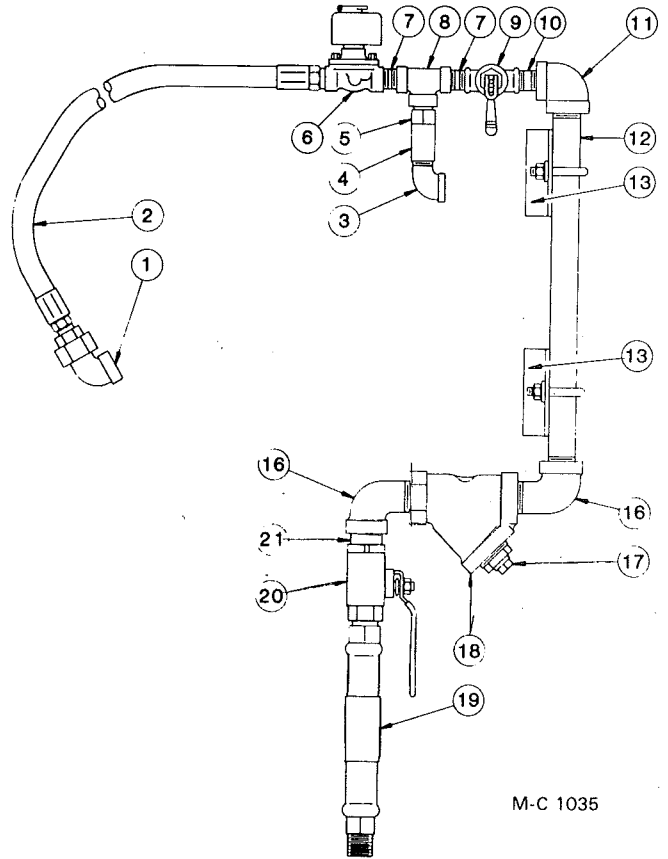
Ref. Part No.	Qty.	Description	Ref. Part No.	Qty.	Description		
1	124 6872	1	Flame Sensing Probe	7	128 2747	1	Electrode Mount Seal
2	121 6915	2	Locknut - 1/2" (12.7mm)	001 8104	4	1/4-20 x 1/2" (6.35 x12.7mm)	Self Tapping Screw
3	000 8162	1	3/8-16 (9.5mm) Hex Nut	8	000 8168	2	3/8-16 Flanged Locknut
4	000 8227	1	3/8-16 x 2 3/4" (9.5 x 69.9mm)	9	122 9003	1	Ignition Wire 66" (168cm)
			Cap screw - Full Thread	10	128 6989	3	Stand-Off Clip
5	128 2746	1	Electrode Mount Plate	11	128 4941	1	Wire Support Bracket
6	128 6995	1	Style 2 Electrode				(On bottom burner)
	000 8186	2	6-32 x 1/2" (12.7mm) Machine	12	124 1079	1	Low Voltage Black Wire Assembly
			Screw				(Flame Sense) 84" (213cm) 18 ga.
	000 8245	2	No. 6 Lockwasher	13	124 1377	1	Low Voltage Red Wire Assembly
	000 8185	2	6-32 Flanged Locknut				(Electrode) 84" (213cm) 18 ga.

## LP Gas Liquid Line Piping



M-C 1026

**670 & 970**



M-C 1035

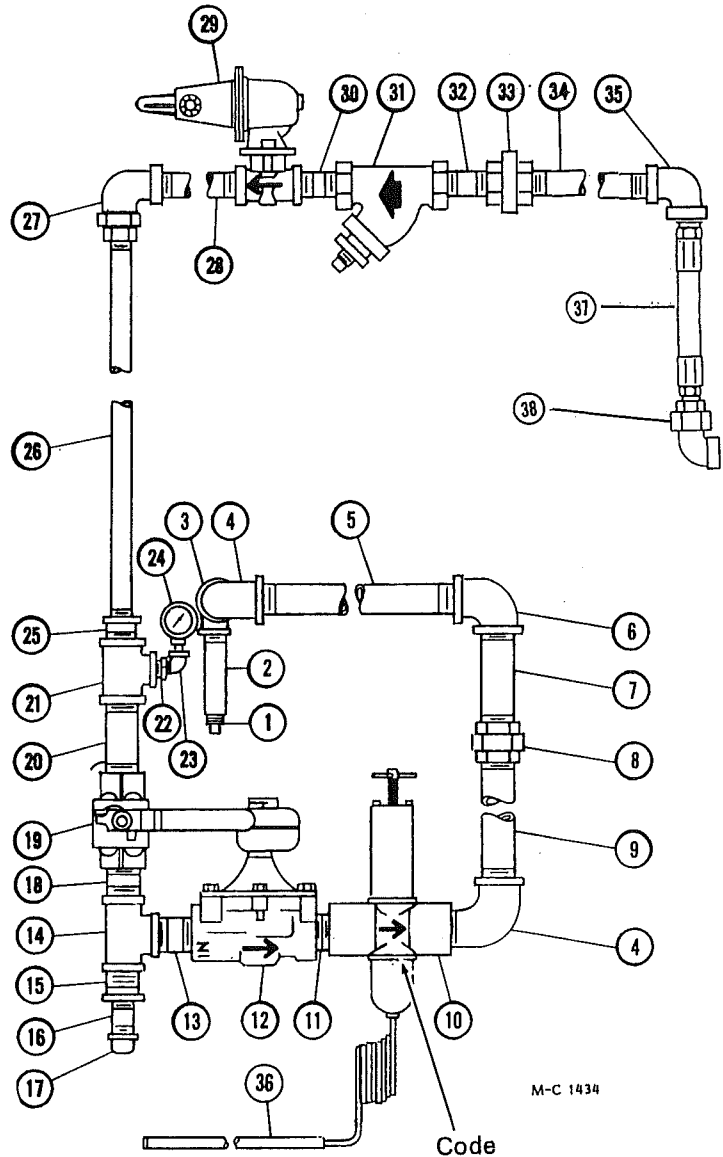
**690**

Ref. Part No.	Description
1 128 8010	½" (12.7mm) Extra Hvy. Union Elbow
2 128 8400	½" (12.7mm) ID x 34" Hose w/Couplings
3 121 8048	½" (12.7mm) - 90° Std. Street Elbow
4 121 7013	Relief Valve
5 121 7014	Relief Valve Adapter
6 125 7082	½" (12.7mm) Solenoid Valve
7 121 8094	½" x 1½" (12.7 x 38.1mm) Extra Hvy. Nipple
8 120 8035	½" (12.7mm) Extra Hvy. "T"
9 121 7015	½" (12.7mm) Hand Valve
10 128 8048	½" x 2½" (12.7 x 6.35mm) Extra Hvy. Nipple
11 121 8043	1" to ½" (25.4 to 12.7mm) - 90° Extra Hvy. Elbow
12 128 8062	1 x 43" (2.54 x 109cm) Extra Hvy. Nipple (670 & 690)
128 8055	1 x 16½" (2.54 x 41.9cm) Extra Hvy. Nipple (690)

Ref. Part No.	Description
13 128 2670	Liquid Line Support
001 8123	5/16-18 x 1¾" (7.9 x 34.9mm) "U" Bolt
000 8106	5/16-18 x ¾" (7.9 x 19mm) Capscrew
000 8169	5/16-18 (7.9mm) Flanged Locknut
14 125 8018	1 x 1 x ½" (25.4 x 25.4 x 12.7mm) Extra Hvy. "T"
15 128 8043	1 x 6" (2.54 x 15.2cm) Extra Hvy. Nipple
16 125 8028	1" (25.4mm) - 90° Extra Hvy. Street Elbow
17 121 8081	½" (12.7mm) Pipe Plug
18 125 8095	1" (25.4mm) Strainer
19 121 7026	Inlet Hose
20 128 8012	1" (25.4mm) Hand Valve
21 125 8030	1" (25.4mm) Close Extra Hvy. Nipple

## LP GAS MANIFOLD AND PIPING (For One Burner)

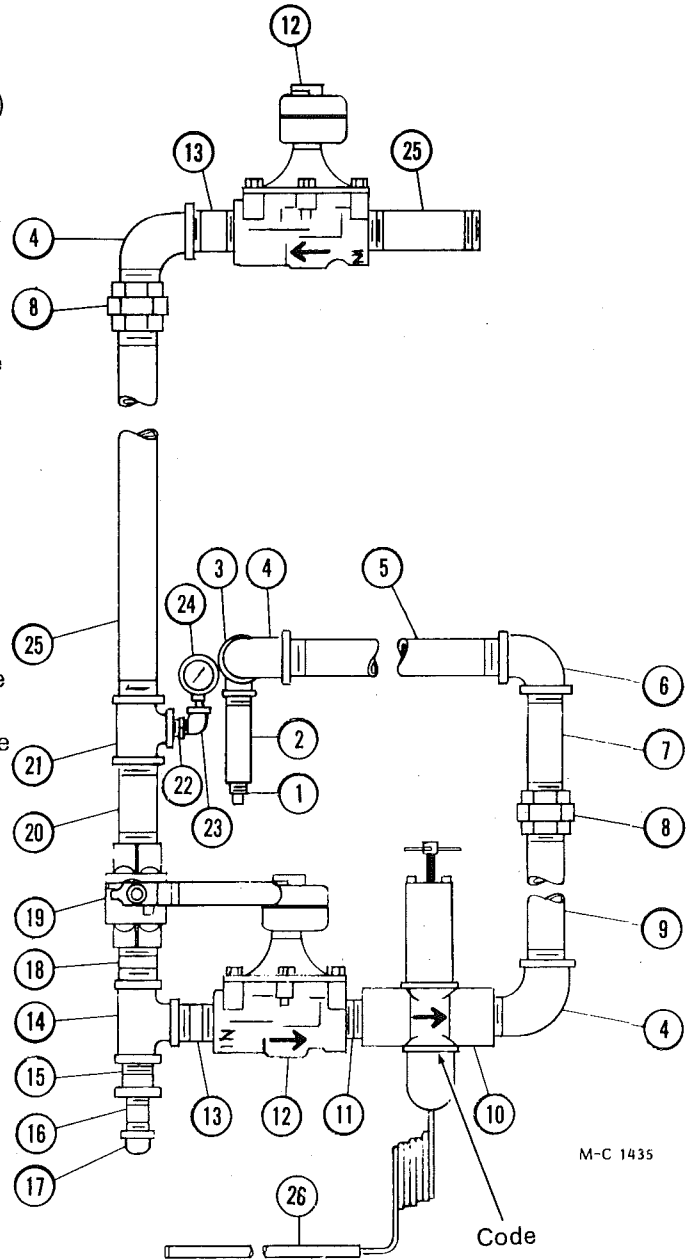
Ref.	Part No.	Qty.	Description
1	021 5711	1	Ring Burner Orifice 5/16" (7.9mm)
2	121 7529	1	Inlet Pipe 3/4 x 6" (1.9 x 15.2cm)
3	123 8049	1	1 1/4 x 3/4" (31.8 x 19mm) Reducing Elbow
4	123 8062	2	1 1/4" (31.8mm) x 90° Str. Elbow
5	123 8085	1	1 1/4 x 19" (3.18 x 48cm) Nipple
6	123 8051	1	1 1/4" (31.8mm) x 90° Elbow
7	128 8065	1	1 1/4 x 11" (3.18 x 28cm) Nipple
8	123 8053	1	1 1/4" (31.8mm) Union
9	127 8021	1	1 1/4 x 9 1/2" (3.18 x 24cm) Nipple
10	123 7024	1	1 1/4" (31.8mm) Mod. Valve
11	123 8069	1	1 1/4" (31.8mm) Close Nipple
12	128 7001	1	1 1/4" (31.8mm) Solenoid Valve
13	125 8013	1	1 1/4 x 2" (31.8 x 51mm) Nipple
14	123 8057	1	1 1/4" (31.8mm) Tee
15	123 8078	1	1 1/4-3/4" (31.8-19mm) Reducing Bushing
16	121 8077	1	3/4 x 2" (19 x 51mm) Nipple
17	121 8050	1	3/4" (19mm) Pipe Cap
18	123 8045	1	1 1/4 x 2 1/2" (31.8x63.5mm) Nipple
19	123 7003	1	Main Burner Hand Valve
20	128 8001	1	1 1/4 x 4 1/2" (31.8x114.3mm) Nipple
21	127 8131	1	1 1/4 x 1 1/4 x 3/8" (31.8 x 31.8 x 9.5mm) Tee
22	127 8132	1	3/8-1/4" (9.5-6.35mm) Reducing Bushing
23	121 8039	1	1/4" (6.35mm) x 90° Str. Elbow
24	120 7002	1	Gas Pressure Gauge
25	123 8078	1	1 1/4-3/4" (31.8-19mm) Reducing Bushing
26	128 8046	1	3/4 x 13 1/2" (1.9 x 34.3cm) Nipple
27	128 8019	1	3/4" (19mm) Female Union Elbow
28	125 8058	1	3/4 x 2 1/2" (19 x 63.5mm) Nipple
29	128 7005	1	Gas Regulator LP
30	121 8005	1	3/4 x 1 1/2" (19 x 38.1mm) Nipple
31	121 8060	1	3/4" (19mm) Dirt Strainer
32	121 8010	1	3/4 x 6 1/2" (1.9 x 16.5cm) Ex. Hvy. Nipple
33	121 8072	1	3/4" (19mm) Ex. Hvy. Union
34	128 8046	1	3/4 x 12 1/2" (19 x 32cm) Ex. Hvy. Nipple
35	121 8027	1	3/4" (19mm) x 90° Ex. Hvy. Elbow
36	122 7036	1	Power Element 140-250°F (60-121°C) Standard - 15 ft. (4.6m) Capillary Code "D"
	122 7023	1	Power Element 90-210°F (32-99°C) Optional Code "B"
	122 7019	1	Power Element 55-155°F (13-68°C) Optional Code "Y"
37	123 7033	1	3/4 x 24" (1.9 x 61cm) S.S. Braided Hose
38	128 8019	1	3/4" (19mm) Ex. Hvy. Female Union Elbow



**NOTE:** Components with directional arrows must be installed as shown.

# NATURAL GAS MANIFOLD AND PIPING (For One Burner)

Ref.	Part No.	Qty.	Description
1	123 5531	1	Ring Burner Orifice $\frac{3}{8}$ " (9.5mm)
2	121 7529	1	Inlet Pipe $\frac{3}{4}$ x 6" (1.9 x 15.2cm)
3	123 8049	1	$1\frac{1}{4}$ x $\frac{3}{4}$ " (31.8 x 19mm) Reducing Elbow
4	123 8062	3	$1\frac{1}{4}$ " (31.8mm) x 90° Str. Elbow
5	123 8085	1	$1\frac{1}{4}$ x 19" (3.18 x 48cm) Nipple
6	123 8051	1	$1\frac{1}{4}$ " (31.8mm) x 90° Elbow
7	128 8065	1	$1\frac{1}{4}$ x 11" (3.18 x 28cm) Nipple
8	123 8053	2	$1\frac{1}{4}$ " (31.8mm) Union
9	127 8021	1	$1\frac{1}{4}$ x 9 $\frac{1}{2}$ " (3.18 x 24cm) Nipple
10	123 7024	1	$1\frac{1}{4}$ " (31.8mm) Mod. Valve
11	123 8069	1	$1\frac{1}{4}$ " (31.8mm) Close Nipple
12	128 7001	2	$1\frac{1}{4}$ " (31.8mm) Solenoid Valve
13	125 8013	2	$1\frac{1}{4}$ x 2" (31.8 x 51mm) Nipple
14	123 8057	1	$1\frac{1}{4}$ " (31.8mm) Tee
15	123 8078	1	$1\frac{1}{4}$ - $\frac{3}{4}$ " (31.8-19mm) Reducing Bushing
16	121 8077	1	$\frac{3}{4}$ x 2" (19 x 51mm) Nipple
17	121 8050	1	$\frac{3}{4}$ " (19mm) Pipe Cap
18	123 8045	1	$1\frac{1}{4}$ x 2 $\frac{1}{2}$ " (31.8x63.5mm) Nipple
19	123 7003	1	Main Burner Hand Valve
20	128 8001	1	$1\frac{1}{4}$ x 4 $\frac{1}{2}$ " (31.8x114.3mm) Nipple
21	127 8131	1	$1\frac{1}{4}$ x $1\frac{1}{4}$ x $\frac{3}{8}$ " (31.8 x 31.8 x 9.5mm) Tee
22	127 8132	1	$\frac{3}{8}$ - $\frac{1}{4}$ " (9.5-6.35mm) Reducing Bushing
23	121 8039	1	$\frac{1}{4}$ " (6.35mm) x 90° Str. Elbow
24	120 7002	1	Gas Pressure Gauge
25	128 8024	2	$1\frac{1}{4}$ x 5" (3.18 x 12.7cm) Nipple
26	122 7036	1	Power Element 140-250°F (60-121°C) Standard -15 ft. (4.6m) Capillary Code "D"
122 7023	1	Power Element 90-210°F (32-99°C) Optional Code "B"	
122 7019	1	Power Element 55-155°F (13-68°C) Optional Code "Y"	



M-C 1435

**NOTE:** Components with directional arrows must be installed as shown.

## Repair Kits and Parts for Modulating Valves, Solenoid Valves and LP Gas Pressure Regulators

### For Modulating Valves 123 7002 & 123 7024

- 122 9993 Seat Kit (Incl. stem, disc holder & diaphragm)
- 122 7006 Diaphragm

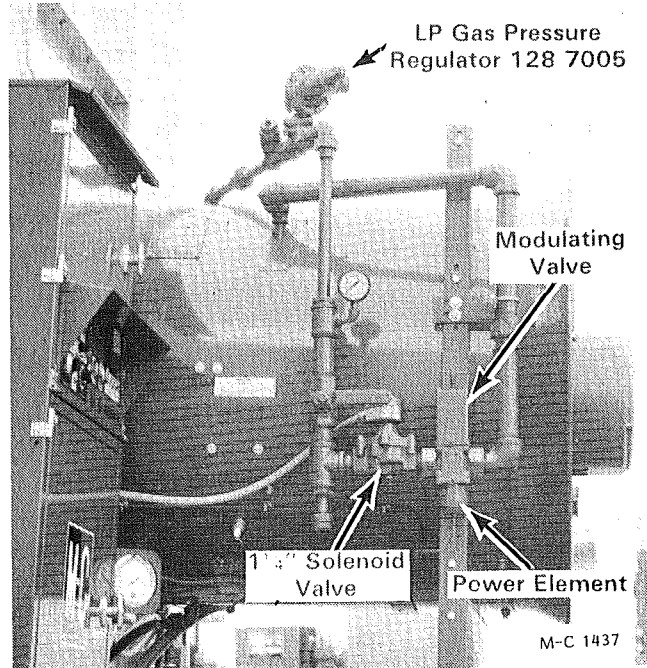
### For 1 1/4" (31.8mm) Solenoid Valve 128 7001

- 122 7034 Repair Kit (See note)
- 4607 Coil

### For 1/2" (12.7mm) Solenoid Valve 125 7082

- 122 7039 Repair Kit (See note)
- 122 7001 Coil

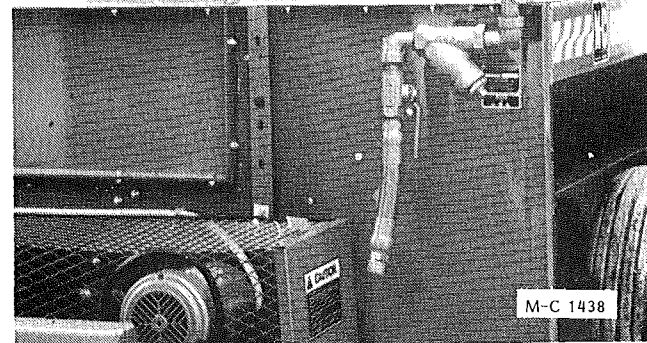
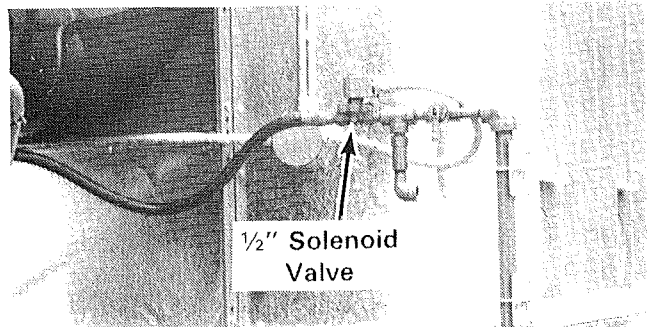
**NOTE:** Kit includes all internal parts that would require replacement in normal service and installation instructions.



690EM-LP

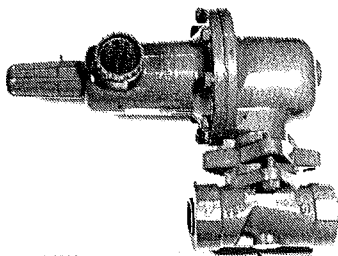
### For LP Gas Pressure Regulator 128 7005

- 122 7043 Diaphragm (Nitrile)
- 122 7044 Disc Assembly
- 122 7045 Control Spring (Yellow)
- 122 7046 Stabilizer
- 122 7047 Diaphragm Case O Ring



690EM-LP

### Fisher LP Gas Pressure Regulators



M-C 1216

128 7005

# INSTALLATION INSTRUCTIONS

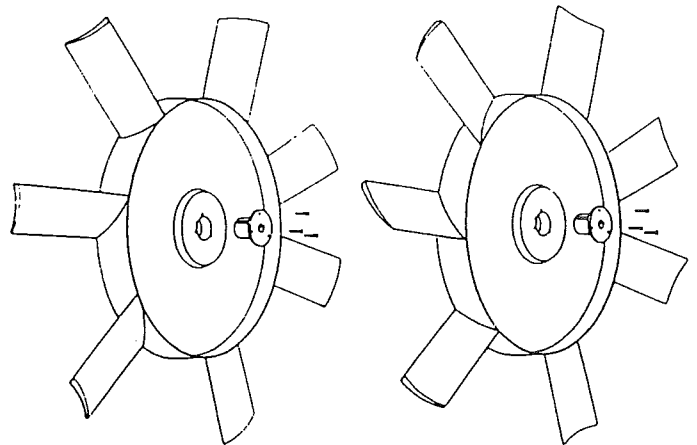
## For Mounting Cast Aluminum Axial Fans on M-C Grain Dryers



**CAUTION:** Be sure to turn off and lock the main electric supply to the dryer before working on fan.

**DO NOT** use old bushing and bolts. Use new bushing and bolts supplied with this fan. **DO NOT** use lubricant on any parts.

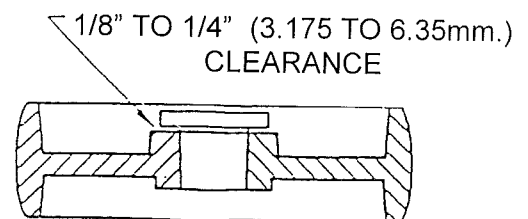
1. Make sure that inner fan bore is clean of paint/debris. Make sure motor shaft is clean and bore of bushing is clean. Clean and remove all burrs or nicks.
2. Align unthreaded holes of bushing with threaded holes in the fan. Align the shaft key with black balancing line on the fan when possible.



3. Insert the three bolts without the nylon patch through the unthreaded holes in bushing into the threaded holes in the fan. Torque down all three bolts to 15 ft./lbs. (2.07 Kg-meters): start by finger tightening all three bolts and then tighten bolts equally 1/4 turn at a time rotating from bolt to bolt until reaching 15 ft./lbs. (2.07 Kg-meters). Once tight make 3 revolutions to verify that all bolts will not rotate at all. **FAILURE TO TORQUE THE BOLTS CORRECTLY MAY RESULT IN THE FAN COMING LOOSE FROM MOTOR SHAFT!**
4. Remove the bolts and install the bolts with flange whiz lock head, plus nylon patch. If a nylon patch bolt is not available, apply lock-tight. Lock-tight should be applied only at one specific location - 5/8" (15.88mm.) from head of bolt x 1/2" (12.7mm.) long.
5. Retorque bolts down to 15 ft./lbs. (2.07 Kg-meters).
6. When torqued at 15 ft./lbs. (2.07 Kg-meters), make 3 revolutions rotating from bolt to bolt at 15 ft./lbs. (2.07 Kg-meters) to verify that all bolts will not rotate at all.

**Note:** If a pop is heard while tightening, it is possible the fan was cracked at the bolt holes. Do not attempt to use the fan if this has occurred. Remove the fan and inspect the bore of the fan for a crack running along the threaded hole of the fan. If a crack exists, call the factory immediately.

7. **CAUTION: DO NOT ATTEMPT TO PULL THE HEAD OF THE BUSHING FLUSH WITH THE CASTING!** There should be a clearance of 1/8" to 1/4" (3.175 to 6.35mm.) when the bushing is properly tightened. In no case should the fan be used if the bushing head is in contact with the fan. Contact the factory immediately if this occurs.

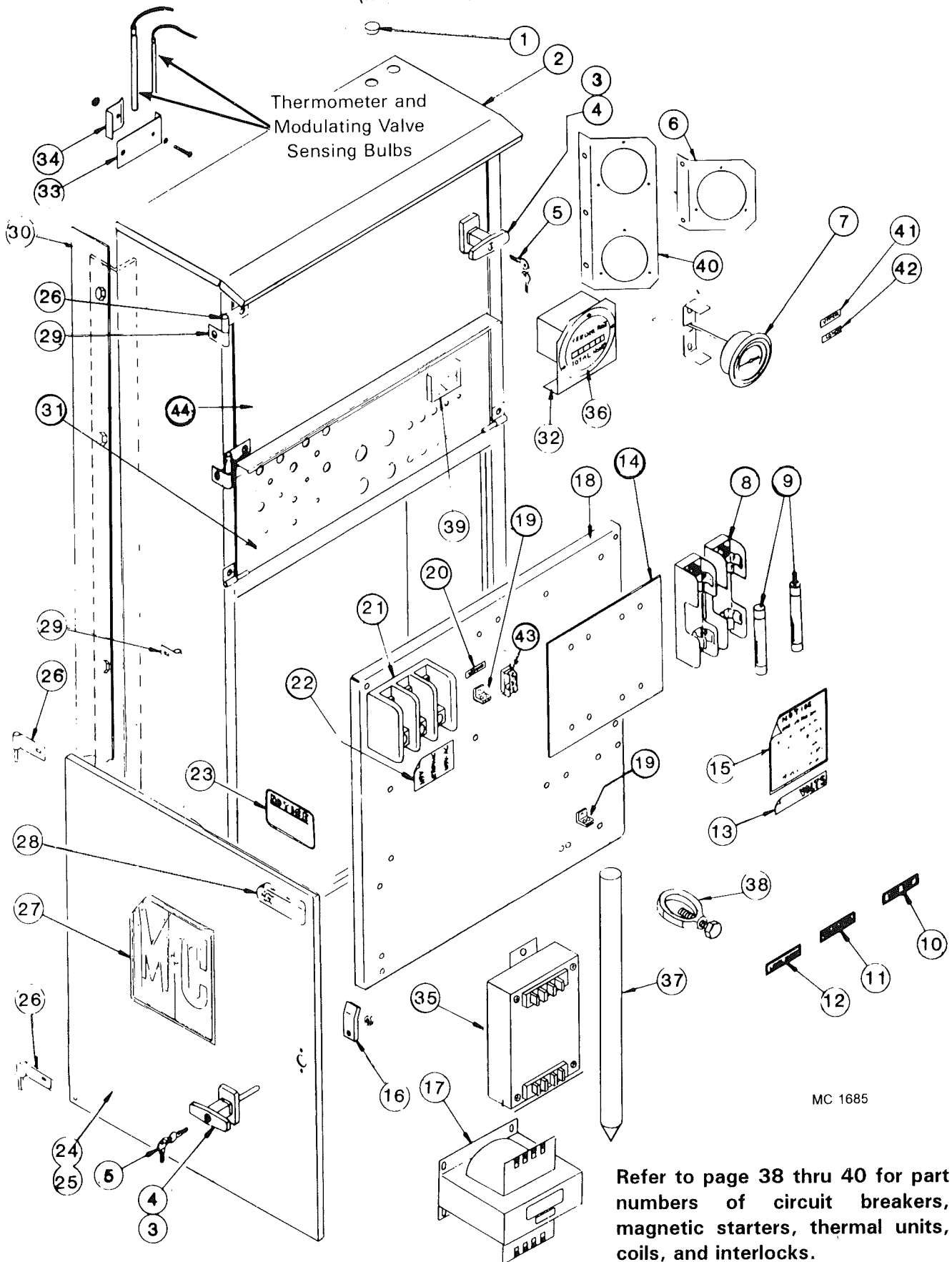


8. **BE SURE ALL TOOLS AND HARDWARE ARE CLEAR OF DRYER.** Manually rotate the fan to assure clearance between the blade and the housing. There should be a minimum clearance of 1/16" (1.59mm.) at any point. A minor motor position change or shaft and bearing position change may be required in order to obtain proper clearance. Reinstall guard and jog starter to assure the fan does not touch housing. Once clearance is assured, dryer is ready for operation. The dryer should be felt for vibration. Any vibration in excess of a tingling feeling to the fingers should be noted and the factory should be contacted.

Form D331 (Revised February 2000)



# 115V and Motor Control Cabinet (Model 670, 690 & 970)

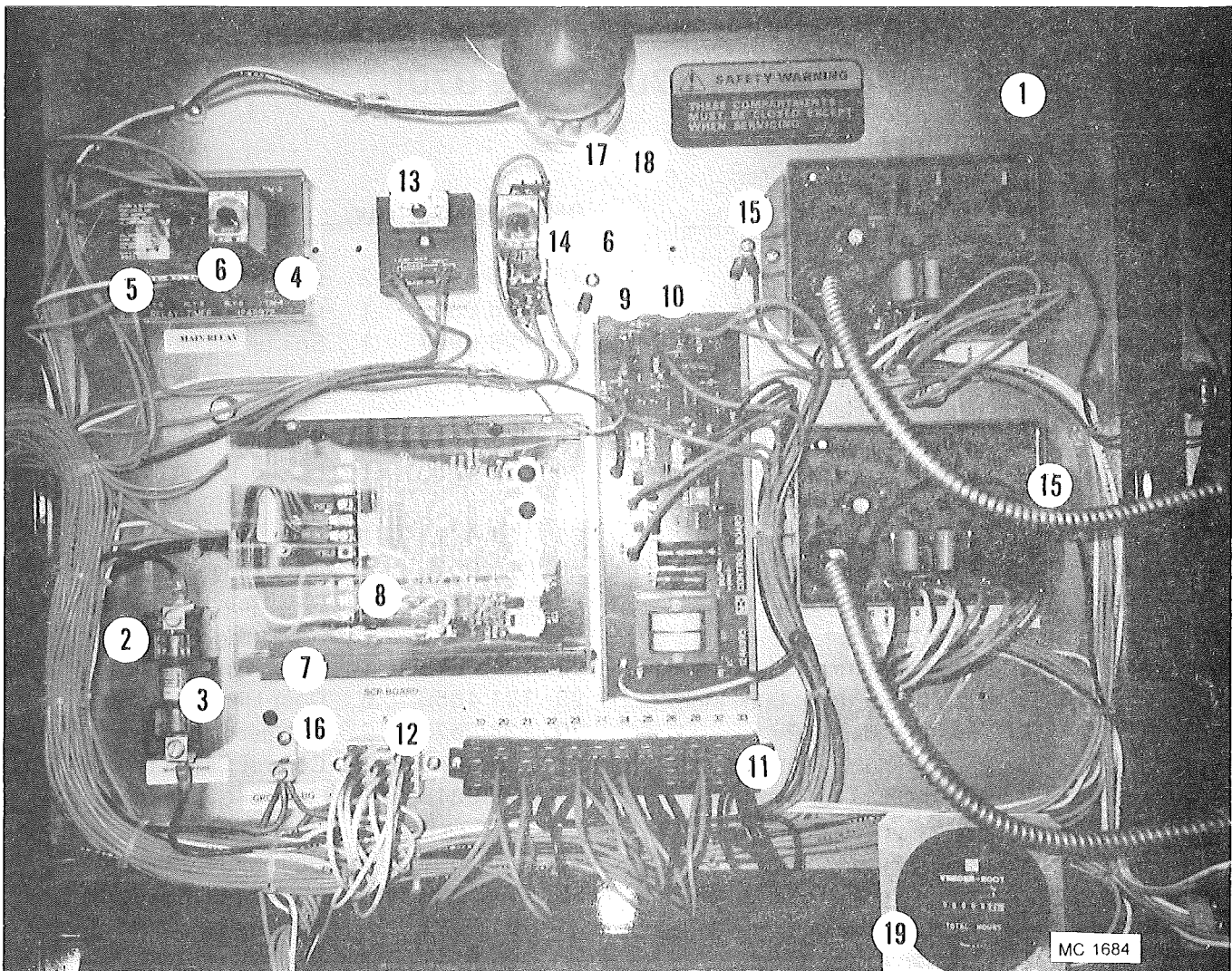


Refer to page 38 thru 40 for part numbers of circuit breakers, magnetic starters, thermal units, coils, and interlocks.

## 115V AND MOTOR CONTROL CABINET (Model 670, 690 & 970)

Ref.	Part No.	Qty.	Description	Ref.	Part No.	Qty.	Description
1	121 8600	1	Hole Plug	19	125 6918	2	Grounding Lug
2	128 0307	1	Control Cabinet Weld	20	128 8349	1	Ground Decal
	128 8600	AR	Weather Stripping - ¼" x ½" (6.35x12.7mm)	21	128 6957	1	Splitter Block-1 & 3 Phase
3	124 1021	2	Door "T" Handle Assembly (Incl. Ref. 5 keys, Ref. 16 cam and mtg. hardware)	22	128 8318	1	Splitter Block Voltage Decal
4	128 8946	2	Door "T" Handle w/keys (Less Ref. 16 cam)	23	001 8310	1	Machine Warranty Decal
5	122 8900	2	Door "T" Handle Key	24	128 1930	1	Lower Door Assembly (Incl. Ref. 3, 16 & 25 thru 28)
6	124 4824	1	Thermometer Mt. Plate - 690	25	124 4816	1	Door - Lower
7	128 8983	1	Thermometer -15ft. (4.6m) Capillary (Mtg. brkt. incl.)	26	021 0012	4	Door Hinge w/Pin
8	203 6801	1	Fuse Holder 208V	27	001 8301	1	M-C Decal - 8-3/16 x 9" (20.8 x 22.9cm)
	121 6988	2	Fuse Holder 460V & 575V	28	121 8316	1	Dryer Warning Decal
	124 6999	2	Fuse Cover for #1216988	29	121 4656	6	Door Hinge w/o Pin
9	124 6835	2	208V Fuse - FRN9	30	128 2676	2	Cabinet Extension
	124 6829	2	460V Fuse - FRS4	31	128 0340	1	Control Cabinet Door - 690
	127 6839	2	575V Fuse - FRS3.2		128 0318	1	Control Cabinet Door - 670/970
10	121 8313	1	Heat Fan Decal	32	124 2855	1	Hour Meter Bracket
11	128 8335	1	Unload Auger Decal	33	121 2883	-	Sensing Bulb Bracket
12	121 8351	1	Level Auger Decal	34	121 2882	-	Sensing Bulb Clip
13	123 8339	1	208 Volts Decal	35	124 6947	1	Motor Saver (20HP 1Ø only)
	123 8336	1	230 Volts Decal	36	444 645	1	Hour Meter
	123 8335	1	460 Volts Decal	37	124 6980	1	Grounding Rod - 9/16" x 8 ft. (14.3mm x 2.4m)
	123 8338	1	575 Volts Decal	38	124 6979	1	Grounding Rod Clamp
14	128 5789	2	Insulator Sheet (460V & 575V)	39	124 6981	1	Discharge Meter
15	121 8315	1	Notice, Warranty Decal	40	124 4815	1	Thermometer Mt. Plate (670 & 970)
16	128 3425	2	Door Handle Cam	41	121 8322	1	Thermometer "Upper" Decal
17	127 6855	1	200/208V Transformer (750VA)	42	121 8321	1	Thermometer "Lower" Decal
	127 6827	1	230/460V Transformer (750VA)	43	127 6823	1	Isolated Neutral Lug - 3Ø/230V only
	127 6829	1	230/460/575V Trans- former (750VA)	44	021 4769	1	Upper Door (only)
18	124 4453	1	Component Mtg. Panel				

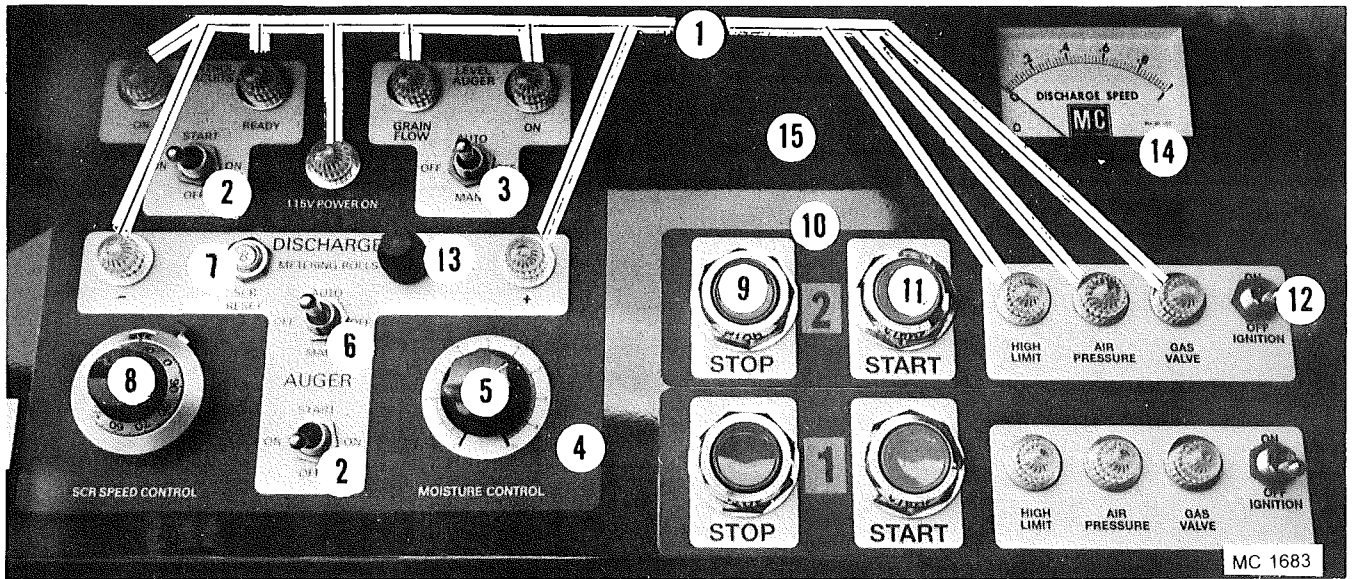
## ELECTRICAL COMPONENTS IN 115V CONTROL CABINET



670/970 Shown

Ref.	Part No.	Qty.	Description
1	021 4770	1	Component Mounting Board
2	128 6851	1	Fuse Holder
3	128 6967	1	10 Amp Fuse (NON-10)
4	124 6972	1	Relay & Timer Socket Board starting with S/N 55242
5	021 6809	1	Relay
6	124 6978	2	60 Minute Adjustable Timer starting with S/N 55242
7	124 6874	1	SCR Board (Dart)
8	121 6805	1	10 Amp. - GLH Fuse
9	124 6995	1	Moisture Control Board
10	128 5916	1	Snap Track 8 1/2 "
11	124 6928	1	Terminal Block 12-Position
12	124 6929	1	Terminal Block 3-Position
13	124 6996	1	0 to 3 Minute Adjustable Level Auger Timer
14	124 6987	1	Cold Grain Timer Base
15	124 6994	1	Ignition Board - 690 starting with S/N 56646
	124 6994	2	Ignition Board - 670 & 970 starting with S/N 56646
16	1256918	1	Grounding Lug
17	124 6841	1	Light Bulb Socket
18	124 6842	1	50 Watt Rough Service Bulb
19	444 645	1	Hour Meter

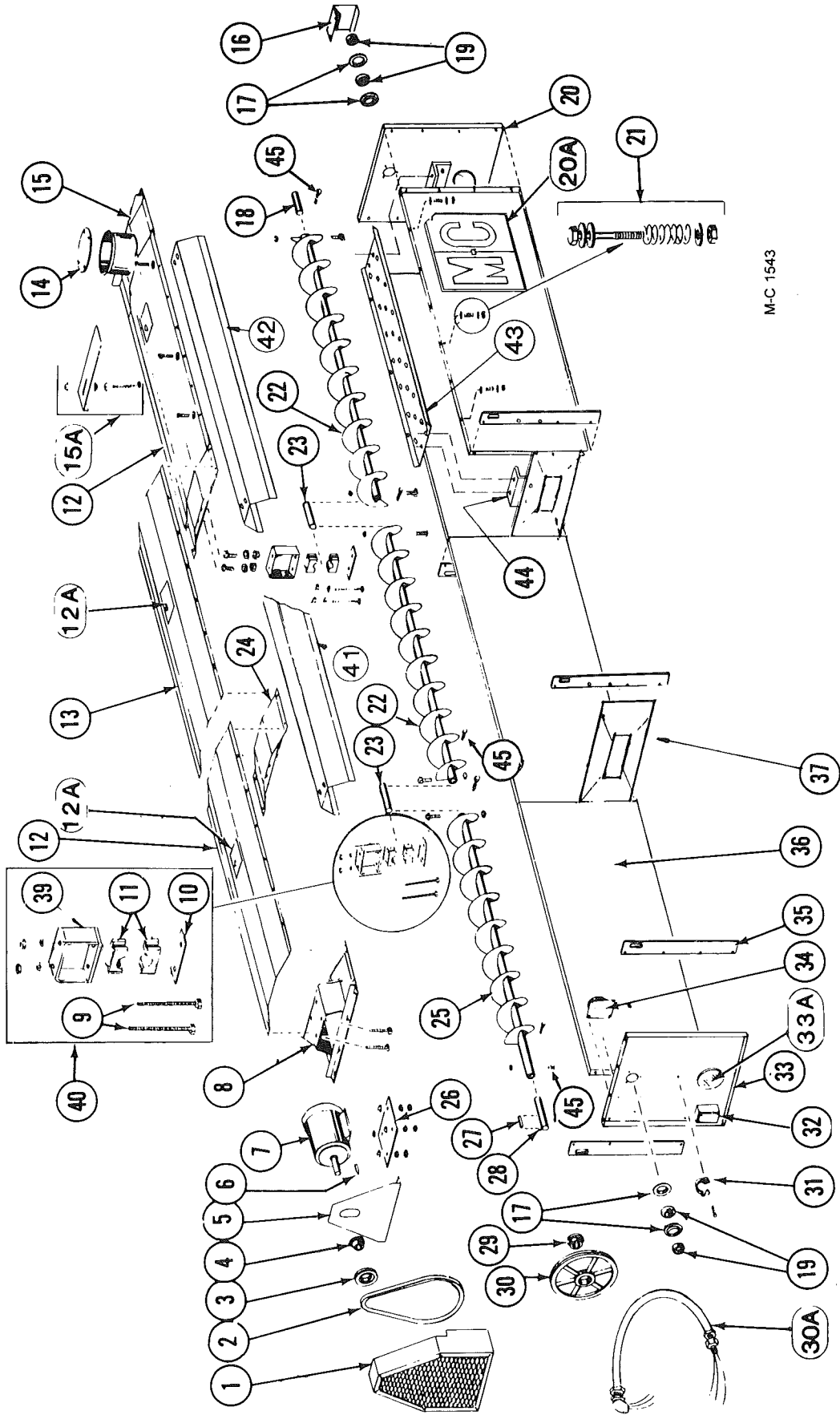
## CONTROL PANEL LIGHTS, SWITCHES AND CONTROLS



670/970 Shown

Ref.	Part No.	Description
1	121 6808	125V Indicator Lamp Assembly (Inc. lamp & lens)
	122 6810	125V Indicator Lamp
	122 6800	Indicator Lamp Lens (Clear)
2	120 6827	OFF-ON-ON Momentary Contact Toggle Switch
3	121 6807	ON-OFF-ON Toggle Switch (DPDT)
4	128 8365	115V Control Bezel
5	124 6955	Moisture Control Potentiometer & Wires - 60" (152cm)
	124 6941	Knob
6	124 6895	ON-OFF-ON Toggle Switch (3PDT)
7	124 6848	8 Amp Circuit Breaker (SCR Drive)
8	124 1195	SCR Drive Potentiometer (10 turn w/wires) - 42" (107cm)
	124 6892	Multi-Dial
9	128 6845	Stop Button - Red
10	128 8358	Fan Control Bezel
11	128 6844	Start Button - Green
12	121 6815	ON-OFF Toggle Switch (SPST)
13	124 6938	Fuse Holder
	124 6937	1 Amp Fuse Slo-Blow
14	124 6981	Discharge Meter
15	128 0340	Control Cabinet Door - 690
	128 0318	Control Cabinet Door - 670 & 970

# Hopper and Level Auger



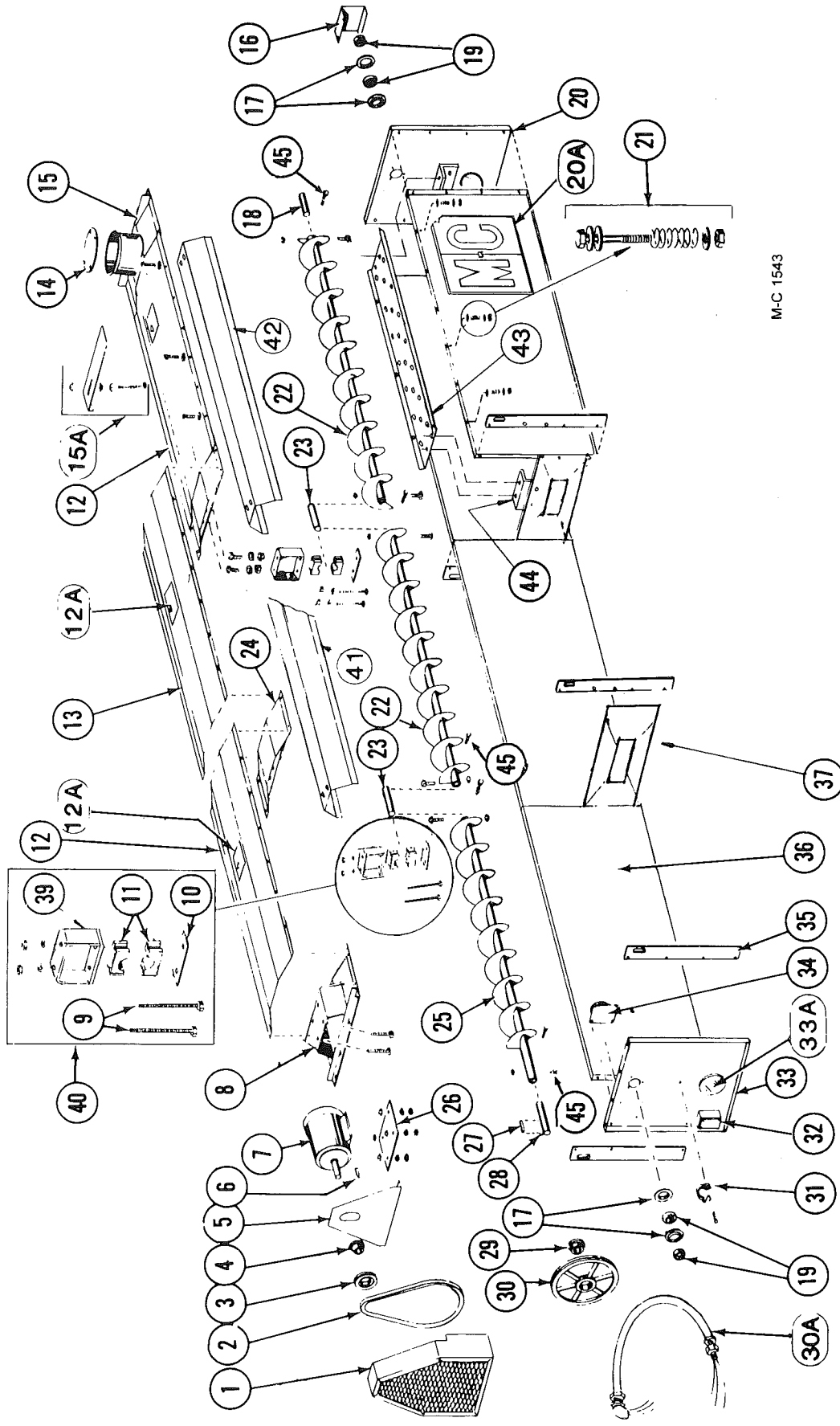
M-C 1543

## Hopper and Level Auger

16 ft. 24 ft. (4.9m) (7.3m)		16 ft. 24 ft. (4.9m) (7.3m)					
Ref.	Part No.	Qty.	Description	Ref.	Part No.	Qty.	Description
1	129 0003	1	Level Auger Guard	13	129 2946	-	Hopper Cover - Center 83" (211cm)
2	128 6103	1	2/3V/710 (banded belt) or 128 6104 in matched set of two	14	129 4204	1	Receiving Tube Cover
3	128 6207	1	3V/3.65 x 2 Groove Pulley 60 Cycle	15	129 0002	1	Receiving Hopper
	128 6220	1	3V/4.5 X 2 Groove Pulley 50 Cycle	15A	129 4205	1	Flow Restrictor
4	128 6214	1	1 1/8" (28.6mm) SH Bushing for 3HP & 5HP motor (Incl. capscrews & lockwashers)	129 5703	1	1	Position & Locking Bolt
5	129 4944	1	Level Auger Guard Back	000 8168	3	3	3/8-16 Flanged Locknut
6	001 5119	1	Key - 1/4 "x1/4 "x2" (6.35x6.35x51mm) 3HP & 5HP motors	129 4947	1	1	Stub Guard
7	128 6818	1	3HP 30 Motor 230/380/460V	001 6004	4	4	Bearing Flangette 1 1/4 " (31.75mm)
	128 6815	-	5HP 30 Motor 230/380/460V	128 5052	1	1	Level Auger Rear Shaft 1 1/4 " x 8" (31.75 x 203mm)
	128 6829	1	3HP 10 Motor 230V-670/690/970 10	001 6003	2	2	Bearing w/Lock Collar 1 1/4 "
8	129 0001	1	Level Auger Motor Mount	129 2848	1	1	Hopper End Panel - Rear w/View Lens
9	001 8287	2	3/8"-16 x 3 3/4 " (9.5 x 95.2mm) Capscrew - Grade 5	121 8343	2	2	M-C Decal 26 1/2 " x 23" (67x60cm)
	000 8162	4	3/8-16 Hex Nut	000 8101	12	18	1/4-20x2" (6.35x51mm) Capscrew
10	128 3415	1	Bearing Hanger Bar	131 8718	12	18	Spring 3/8" OD x 1 3/4 " (15.9 x 44.5mm) Plated
11	128 6021	1	Wood Bearing - 1 1/4 " (31.75mm) 2 halves	000 8172	36	54	1/4" (6.35mm) Flatwasher
12	129 2945	2	Hopper Cover - Front & Rear 76" (193cm)	000 8210	12	18	1/4-20 Two-Way Locknut
12A	128 8355	2	Warning Decal				

Continued on next page

# Hopper and Level Auger



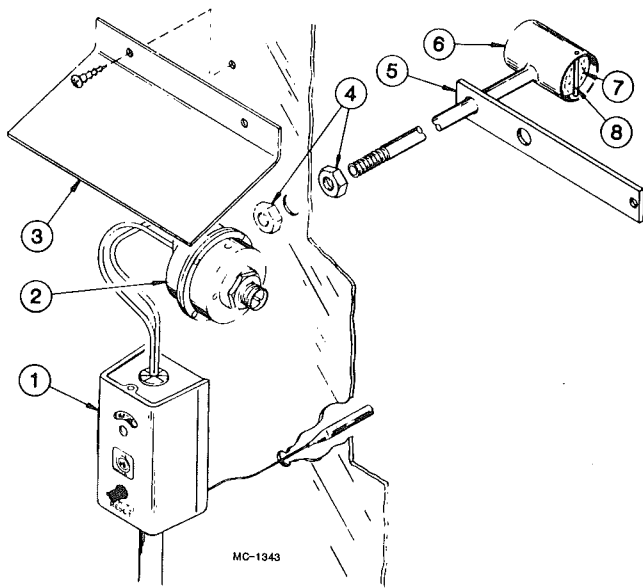
M-C 1543

## Hopper and Level Auger

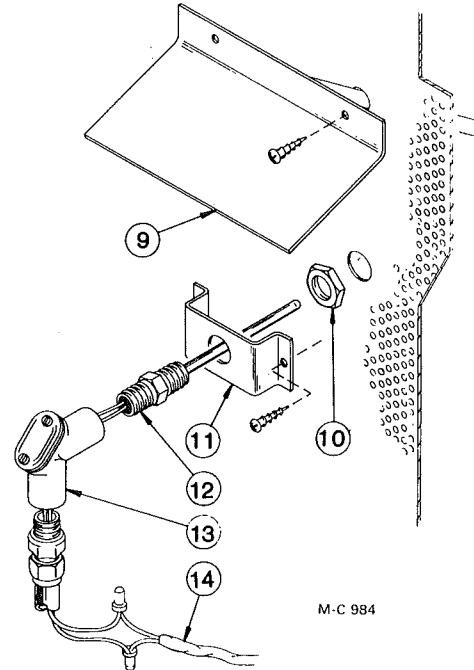
16 ft. 24 ft. (4.9m) (7.3m)				16 ft. 24 ft. (4.9m) (7.3m)			
Ref.	Part No.	Qty.	Description	Ref.	Part No.	Qty.	Description
22	128 0122	1	2 Level Auger 93½" (238cm) RH Flighting	33	129 2835	1	Hopper End Panel - Front
23	128 5050	1	2 Level Auger Center Shaft 1¼" x 10¼" (3.175 x 26cm)	33A	129 5702	1	Port View Lens
24	129 0000	1	2 Level Auger Support	34	128 6992	1	Level Switch Indicator (See pg. 36)
25	128 0317	1	1 Level Auger 86" (218cm) RH Flighting	35	129 3412	4	Lifting Bar
26	129 4202	1	1 Level Auger Motor Mount Plate	36	129 2836	4	Hopper Side
	000 8161	4	4 ½-13 x 3½" (12.7 x 89mm) Capscrew (Full Thread)	37	129 2715	1	Hopper Sectional Panel
	000 8170	4	4 ½-13 (12.7mm) Flanged Locknut	38			
	000 8163	8	8 ½-13 (12.7mm) Hex Nut	39	128 0292	1	Level Auger Brg. Support Bracket
27	001 5120	1	1 Key-¼" x 1½" (6.35 x 38.1mm)		001 8209	2	¾-16 x 1" (9.5 x 25.4mm)
28	128 5051	1	1 Level Auger Front Shaft 1¼" x 10" (3.175 x 25.4cm)		001 8139	2	Hex Washer Head Bolt - Grade 5
29	121 6241	1	1 ¼" (31.75mm) SK Bushing		000 8162	2	¾-16 (9.5mm) Hex Nut
30	128 6208	1	1 Incl. capscrews & lockwashers	40	122 1008	1	Level Auger Bearing Kit (Incl. Ref. 9, 10, 11 & 39 in quantities reqd. for one bearing)
30A	128 1960	1	1 3V/19.0 x 2 Groove Pulley	41	129 2839	-	Auger Cover Long
31	128 8951	1	1 Flexible Conduit w/Wires	42	129 2838	1	Auger Cover Short
32	128 6922	1	1 Rubber Strap w/Hook	43	128 2761	1	Pan Under Auger
				44	128 2760	2	Auger Pan Support Bracket
				45	001 8137	8	¾"-16 x 2" (9.5 x 50mm) Capscrew - Grade 5
					001 8149	8	¾"-16 (9.5mm) Two-Way Locknut



# Moisture Control, Sensor, Air Pressure and High Limit Switches



**Air Pressure and High Limit Switches**



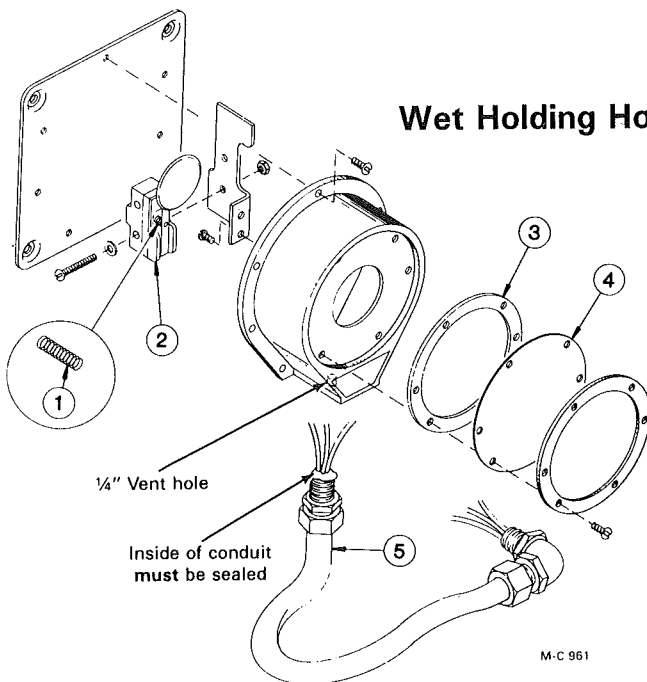
**Moisture Control Sensor**

**Ref. Part No. Description**

1	124 6934	High Limit Switch – Adjustable-Manual Reset
2	121 6849	Air Pressure Switch
3	121 2946	High Limit Switch Cover
4	121 8000	Pipe Locknut – 1/4" (6.35mm)
5	121 2007	Air Pressure Tube Bracket
6	121 0169	Air Pressure Tube
7	121 5716	Air Pressure Tube Filter
8	-----	Filter Retainer (Wire)

**Ref. Part No. Description**

9	121 0031	Moisture Control Shield
10	121 6915	Locknut – 1/2" (12.7mm)
11	128 3007	Bracket
12	124 6893	Thermistor Sensing Probe
13	123 8089	1/2" (12.7mm) Handy EI
14	125 6908	18/2 PVC Cord with Shield

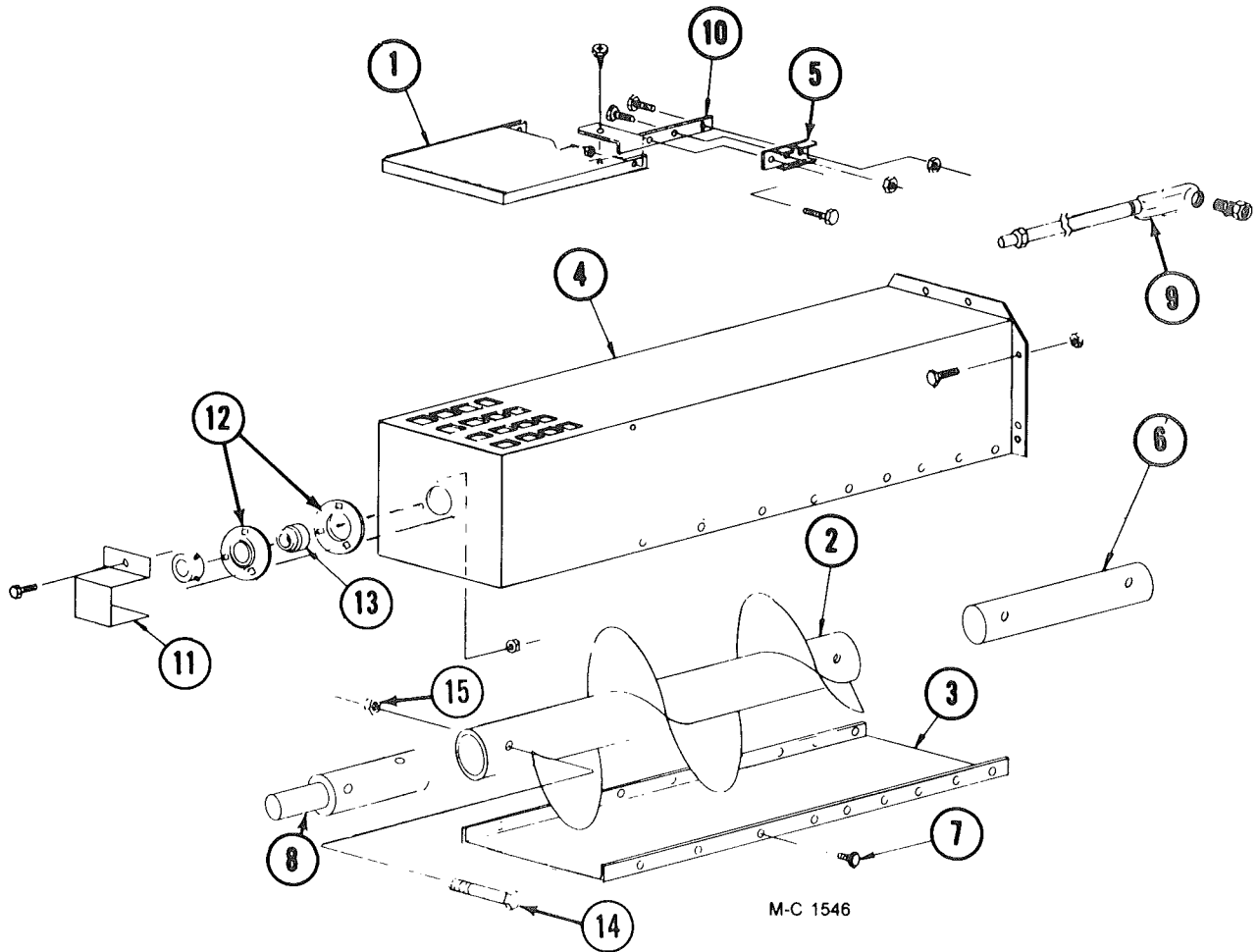


**Wet Holding Hopper Level Switch Assembly**

**Ref. Part No. Qty. Description**

-	128 6992	1	Level Switch (Less ref. 5)
1	122 6847	1	Spring
2	122 6848	1	Microswitch Assembly
3	122 6850	1	Gasket
4	122 6849	1	Diaphragm (Teflon)
5	128 1995	1	Level Switch Wire Assembly

**Optional - 10" (25.4cm) Unloading Auger Extension Kit,  
2 ft. (.61m) - 127 1229,  
4 ft. (1.22m) - 127 1230, and  
6 ft. (1.83m) - 127 1233**



Ref.	Part No.	Qty.	Description	Ref.	Part No.	Qty.	Description
1	128 4712	1*	Over Load Door	8	124 5611	1*	U.A. Output Shaft
2	128 0310	1	2 ft. (.61m) Extension Auger	9	127 1231	1	2 ft. (.61m) Extension Liquatite Assembly
	128 0312	1	4 ft. (1.22m) Extension Auger		127 1232	1	4 ft. (1.22m) Extension Liquatite Assembly
	128 0315	1	6 ft. (1.83m) Extension Auger		127 1234	1	6 ft. (1.83m) Extension Liquatite Assembly
3	124 4474	1	2 ft. (.61m) Bottom Cover	10	128 2937	1*	Bulb Mount
	124 4475	1	4 ft. (1.22m) Bottom Cover	11	128 3011	1*	Stub Shaft Guard
	124 4476	1	6 ft. (1.83m) Bottom Cover	12	001 6004	2*	1 1/4" (31.8mm) Bearing Flangettes
4	128 0311	1	2 ft. (.61m) Discharge Housing	13	001 6003	1*	1 1/4" (31.8mm) Bearing w/Collar
	128 0313	1	4 ft. (1.22m) Discharge Housing	14	000 8229	4	3/8-16 x 2 3/4" (9.5 x 69.9mm) HHCS Grade 5 ZP
	128 0314	1	6 ft. (1.83m) Discharge Housing	15	000 8205	4	3/8-16 (9.5mm) Flanged Locknut
5	120 6801	1*	Switch Mount Clip	16	120 6800	1*	Unload Switch
6	128 5618	1*	Unload Auger Link				
7	001 8202	-	5/16-18 x 3/4" (7.9 x 19mm) HWH Gr.5 Tapping Bolt (Qty. - 8, 16 or 24)				

\*Not included in kit when field installed.

## DRYER MOTORS, CIRCUIT BREAKERS AND MAGNETIC STARTERS

MOTOR			CIRCUIT BREAKER			MAGNETIC STARTER			
HP	*FLA	Part No.	Part No.	Amps	Square "D" No.	Starter Part No.	Square "D" No.	Thermal Unit Part No.	Thermal Unit Size

### 200/208V - 3 PHASE - 60 HZ

□1.5	5.98	127 6833	128 6882	15	QOU 315	124 6931	DPS033	128 6947	B 9.10
‡1.5	5.98	127 6861	128 6882	15	QOU 315	124 6931	DPS033	128 6947	B 9.10
2	7.82	127 6841	128 6882	15	QUO 315	124 6931	DPS033	128 6863	B 11.5
3	11.0	127 6832	124 6875	20	QOU 320	124 6931	DPS033	128 6823	B 17.5
5	17.5	127 6843	124 6876	35	QOU 335	124 6931	DPS033	120 6857	B 32
7.5	25.3	127 6858	124 6904	50	QOU 350	124 6930	DPS053	128 6979	B 40
10	32.2	203 6809	125 6912	60	QOU 360	124 6930	DPS053	128 6950	B 50
15	48.3	126 6854	128 6885	90	QOU 390	124 6930	DPS053	128 6953	B 79
20	62.1	127 6853	128 6966	100	QOU 3100	124 1082	DPA73	128 6827	CC 87.7
25	67.0	127 6852	128 6887	110	Q2L 3110	124 1082	DPA73	120 6844	CC 103
30	80.0	127 6859	124 6906	125	Q2L 3125	124 1083	DPA93	128 6954	CC 132

### 230V - 1 PHASE - 60 HZ

□1.5	8.3	121 6846	128 6878	20	QOU 220	124 6931	DPS033	128 6863	B 11.5
‡1.5	10.6	127 6863	128 6878	20	QOU 220	124 6931	DPS033	120 6850	B 15.5
2	12.3	121 6862	124 6903	25	QOU 225	124 6931	DPS033	128 6949	B 19.5
3	20.0	128 6829	124 6909	40	QOU 240	124 6931	DPS033	120 6857	B 32
5	28.0	201 6815	128 6880	60	QOU 260	124 6930	DPS053	128 6979	B 40
‡7.5	38.5	124 6816	124 6908	80	QOU 280	124 6930	DPS053	124 6910	B 66
†7.5	38.5	124 6888	124 6908	80	QOU 280	124 6930	DPS053	124 6910	B 66
10	45.0	124 6818	128 6881	90	QOU 290	124 6930	DPS053	128 6953	B 79
20	92.0	124 6879	124 6881	125	Q2L 2125	124 1083	DPA93	128 6820	CC 156

### 230V - 3 PHASE - 60 HZ

□1.5	5.0	121 6845	128 6882	15	QOU 315	124 6931	DPS033	120 6851	B 7.70
‡1.5	5.0	127 6860	128 6882	15	QOU 315	124 6931	DPS033	120 6851	B 7.70
2	6.0	121 6861	128 6882	15	QOU 315	124 6931	DPS033	128 6947	B 9.10
3	9.0	128 6818	128 6882	15	QOU 315	124 6931	DPS033	125 6931	B 14.0
5	13.8	128 6815	124 6907	25	QOU 325	124 6931	DPS033	120 6855	B 25
7.5	20.6	121 6948	128 6968	40	QOU 340	124 6931	DPS033	128 6946	B 36
10	27.2	201 6818	125 6912	60	QOU 360	124 6930	DPS053	120 6853	B 45
15	39.2	201 6819	128 6891	80	QOU 380	124 6930	DPS053	128 6978	B 70
20	49.6	125 6934	128 6885	90	QOU 390	124 1082	DPA73	128 6972	CC 74.6
25	61.0	201 6842	128 6966	100	QOU 3100	124 1082	DPA73	128 6827	CC 87.7
30	73.0	128 6986	128 6887	110	QL2 3110	124 1083	DPA93	128 6820	CC 156

\*If FLA (Full Load Amps) shown does not match FLA imprinted on motor name plate, refer to Square D charts for correct thermal unit size.

□ - 5/8" shaft

‡ - 7/8" shaft

† - 124 6816 has 1 1/8" shaft. 124 6888 has 1 1/8" shaft.

## DRYER MOTORS, CIRCUIT BREAKERS AND MAGNETIC STARTERS

MOTOR			CIRCUIT BREAKER			MAGNETIC STARTER			
HP	*FLA	Part No.	Part No.	Amps	Square "D" No.	Starter Part No.	Square "D" No.	Thermal Unit Part No.	Thermal Unit Size

### 380V - 3 PHASE - 50 HZ

1.5	2.9	127 6860	128 6931	15	FAL 36015	124 6931	DPS033	128 6951	B 6.25
**1.5	2.9	123 6876	128 6931	15	FAL 36015	124 6931	DPS033	128 6951	B 6.25
2	3.7	121 6861	128 6931	15	FAL 36015	124 6931	DPS033	120 6845	B 6.90
**2	3.7	124 6867	128 6931	15	FAL 36015	124 6931	DPS033	120 6845	B 6.90
3	5.2	128 6818	128 6931	15	FAL 36015	124 6931	DPS033	128 6947	B 9.10
15	23.0	201 6819	128 6937	60	FAL 36060	124 6930	DPS053	120 6853	B 45
20	30.5	125 6842	124 6905	70	FAL 36070	124 6930	DPS053	128 6950	B 50
25	35.9	128 6986	125 6929	80	FAL 36080	124 6930	DPS053	128 6983	B 56

### 460V - 3 PHASE - 60 HZ

□1.5	2.5	121 6845	128 6931	15	FAL 36015	124 6931	DPS033	128 6984	B 3.00
‡1.5	2.5	127 6860	128 6931	15	FAL 36015	124 6931	DPS033	128 6984	B 3.00
2	3.0	121 6861	128 6931	15	FAL 36015	124 6931	DPS033	128 6948	B 4.15
3	4.5	128 6818	128 6931	15	FAL 36015	124 6931	DPS033	120 6845	B 6.9
5	6.9	128 6815	128 6931	15	FAL 36015	124 6931	DPS033	128 6952	B 10.2
7.5	10.3	121 6948	128 6933	20	FAL 36020	124 6931	DPS033	128 6823	B 17.5
10	13.6	201 6818	125 6928	30	FAL 36030	124 6931	DPS033	120 6855	B 25.0
15	19.6	201 6819	128 6930	40	FAL 36040	124 6930	DPS053	128 6946	B 36
20	24.8	125 6934	128 6937	60	FAL 36060	124 6930	DPS053	120 6853	B 45
25	31	201 6842	124 6905	70	FAL 36070	124 6930	DPS053	128 6983	B 56
30	37	128 6986	125 6929	80	FAL 36080	124 6930	DPS053	128 6978	B 70

### 575V - 3 PHASE - 60 HZ

□1.5	2	127 6815	128 6931	15	FAL 36015	124 6931	DPS033	128 6984	B 3.00
‡1.5	2	127 6862	128 6931	15	FAL 36015	124 6931	DPS033	128 6984	B 3.00
2	2.4	127 6816	128 6931	15	FAL 36015	124 6931	DPS033	120 6848	B 3.70
3	3.6	127 6814	128 6931	15	FAL 36015	124 6931	DPS033	120 6829	B 5.50
5	5.5	127 6847	128 6931	15	FAL 36015	124 6931	DPS033	128 6985	B 8.20
7.5	8.2	127 6828	128 6931	15	FAL 36015	124 6931	DPS033	128 6863	B 11.5
10	10.8	127 6857	128 6933	20	FAL 36020	124 6931	DPS033	128 6823	B 17.5
15	15.6	127 6845	125 6928	30	FAL 36030	124 6931	DPS033	128 6971	B 28
20	19.8	127 6844	128 6930	40	FAL 36040	124 6931	DPS033	128 6946	B 36
25	25	127 6846	128 6937	60	FAL 36060	124 6930	DPS053	120 6853	B 45
30	30	124 6902	128 6937	60	FAL 36060	124 6930	DPS053	128 6983	B 56

\*If FLA (Full Load Amps) shown does not match FLA imprinted on motor name plate, refer to Square D charts for correct thermal unit size.

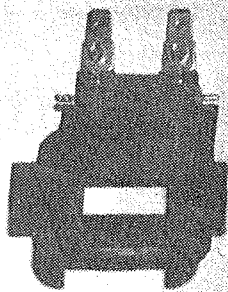
- \*\* - "C" Face
- - 5/8" shaft
- ‡ - 7/8" shaft

## 115V COILS AND INTERLOCKS

STARTER		COIL		INTERLOCK	
SQUARE "D" NO.	M-C NO.	M-C NO.	SQUARE "D" NO.	M-C NO.	SQUARE "D" NO.
DPA73	124 1082	122 6861	9998-DA3V02	124 6933	9999-D-20
DPA93	124 1083	122 6861	9998-DA3V02	124 6933	9999-D-20
DPS053 (50) HZ	124 6930	122 6860	9998-DA1V02	124 6933	9999-D-20
DPS033 (50) HZ	124 6931	122 6860	9998-DA1V02	124 6933	9999-D-20
DPS033 (60) HZ	124 6931	122 6860	9998-DA1V02	124 6933	9999-D-20
DPS053 (60) HZ	124 6930	122 6860	9998-DA1V02	124 6933	9999-D-20

## JUMPER STRAP KITS AND CONTACT KITS

STARTER		JUMPER STRAP KIT (2 STRAPS PER KIT)		CONTACT KIT	
SQUARE "D" NO.	M-C NO.	M-C NO.	SQUARE "D" NO.	M-C NO.	SQUARE "D" NO.
DPA73	124 1082	124 6885	9998-S032	122 6863	9998-DRC7
DPA93	124 1083	124 6885	9998-S032	122 6864	9998-DRC9
DPS033 (50) HZ	124 6931	120 6841	9998-S031		
DPS053 (50) HZ	124 6930	120 6841	9998-S031	122 6862	9998-DRC5
DPS033 (60) HZ	124 6931	120 6841	9998-S031		
DPS053 (60) HZ	124 6930	120 6841	9998-S031	122 6862	9998-DRC5



Magnetic  
Coil



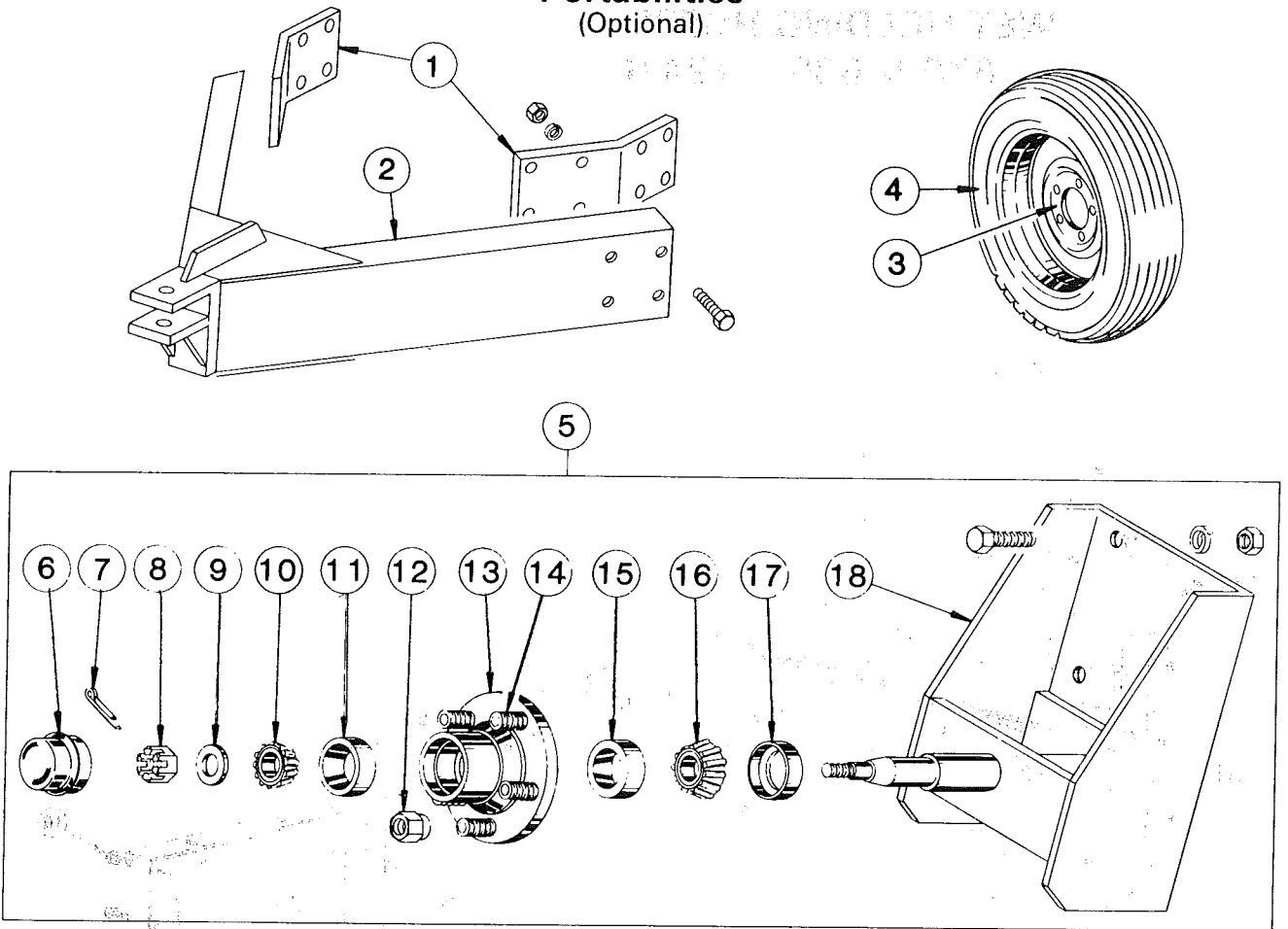
Interlock



Thermal  
Unit

M-C 1402

## Portabilities (Optional)



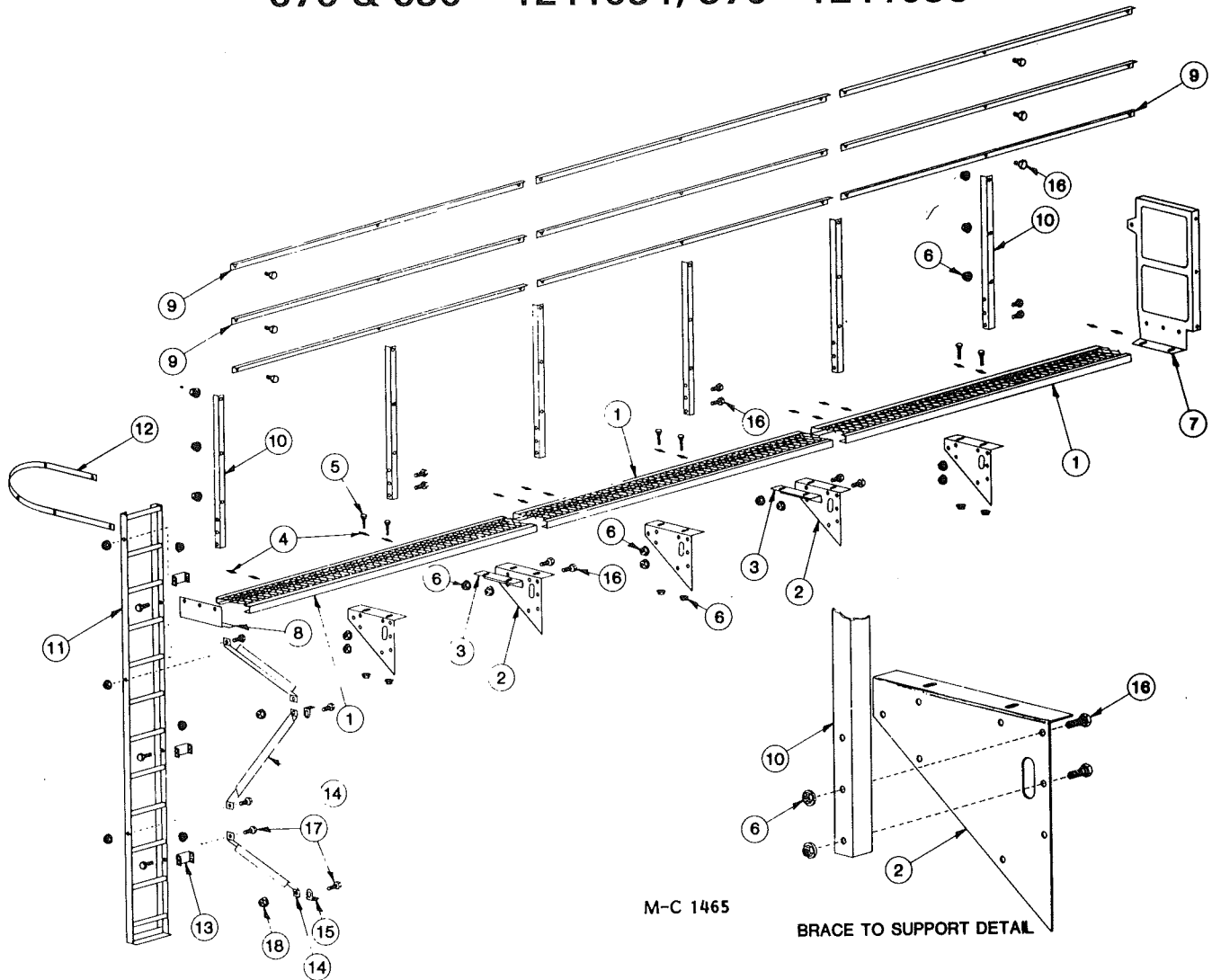
M-C 980

- 120 1030 - 4 Wheel Portabilities (Incl. ref. 1 & 2 and four of ref. 3 & 5 - less tires)
- 120 1031 - 6 Wheel Portabilities (Incl. ref. 1 & 2 and six of ref. 3 & 5 - less tires)
- 120 1043 - 8 Wheel Portabilities (Incl. ref. 1 & 2 and eight of ref. 3 & 5 - less tires)
- 120 1040 - Additional Portabilities (Incl. two of ref. 3 & 5 - less tires)

Ref.	Part No.	Qty.	Description	Ref.	Part No.	Qty.	Description
1	128 3671	2	Pole Mount Brkt.	6	001 8996	1	Hub Cap
	128 8196	8	3/4" - 10 x 2 1/2" Capscrew - Grd. 5	7	001 8252	1	Cotter Pin - 1/8" x 1 1/2"
	000 8182	8	3/4" Lockwasher	8	001 8253	1	Spindle Nut
	000 8165	8	3/4" - 10 Hex Nut	9	001 8254	1	Spindle Washer
2	120 0047	1	Dryer Pole	10	001 6000	1	Bearing Cone - Outer
	128 8195	8	3/4" - 10 x 2" Capscrew - Grd. 5	11	002 6000	1	Bearing Cup - Outer
	000 8182	8	3/4" Lockwasher	12	001 8989	5	1/2" - 20 Lug Nut - 45°
	000 8165	8	3/4" - 10 Hex Nut	13	001 8992	1	Wheel Hub Ass'y. - 5 Bolt (Incl. ref. 11, 14 & 15)
3	001 8993	1	5 Bolt Wheel - 15"	14	002 8152	5	1/2" - 20 x 1 1/2" Stud
4	127 8990	1	7.60 x 15 - 6 Ply Tubeless Tire	15	002 6001	1	Bearing Cup - Inner
5	120 1028	1	Wheel Spindle & Hub Ass'y. (Inc. ref. 6 thru 18)	16	001 6001	1	Bearing Cone - Inner
	000 8146	6	5/8" - 11 x 1 1/2" Capscrew - Grd. 5	17	001 8991	1	Seal
	000 8181	6	5/8" Lockwasher	18	120 0031	1	Wheel Mount
	000 8164	6	5/8" - 11 Hex Nut				

# WET HOLDING HOPPER WALKWAY (Optional)

## 670 & 690 – 1241094, 970 - 1241095

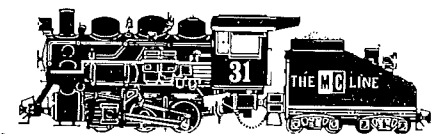
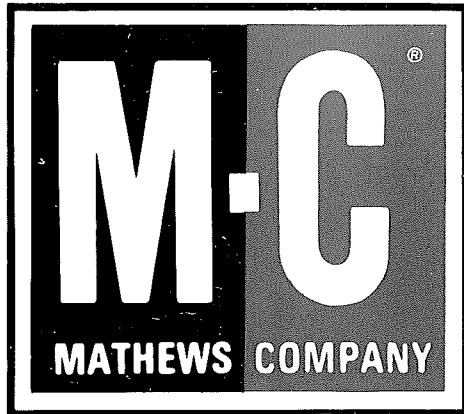


16 ft. 24 ft.  
(4.9m) (7.3m)

16 ft. 24 ft.  
(4.9m) (7.3m)

Ref.	Part No.	Qty	Qty.	Description
1	128 5712	1	1	Walkway Grating - 95 1/4" (2.42m)
	129 8700	1	2	Walkway Grating - 95 3/4" (2.43m)
2	129 2600	3	5	Bridge Support
3	129 2602	1	2	Walkway Grating Support
4	120 8994	12	18	Walkway Grating Anchor Clip
5	001 8276	12	18	5/16-18x3" (7.9x76.2mm) Carriage Bolt
6	000 8169	142	168	5/16 (7.9mm) Flanged Whiz Locknut
7	128 2758	1	1	Walkway End Guard 24 x 47 1/2" (61x121cm)
8	124 2601	1	1	Walkway End Support

Ref.	Part No.	Qty	Qty.	Description
9	129 2004	6	9	Standard Guard Rail
10	129 2015	4	6	Guard Rail Brace
11	120 0045	1	1	Ladder - 11 1/2' (4m)
12	128 2031	1	1	Ladder Cage Hoop - 54" (137cm)
13	128 2660	3	3	Ladder Mounting Bracket
14	128 2661	3	3	Ladder Mounting Angle
15	001 3302	3	3	Angle Clip
16	001 8202	130	150	5/16-18x3/4" (7.9x19mm) Hex Washer Head Bolt - Grd. 5
17	001 8209	12	12	3/8-16 x 1" (9.5x25.4mm) Hex Washer Head Bolt - Grd. 5
18	000 8168	12	12	3/8-16 (9.5mm) Flanged Locknut



***Iron Horse Quality***