

\$5.00

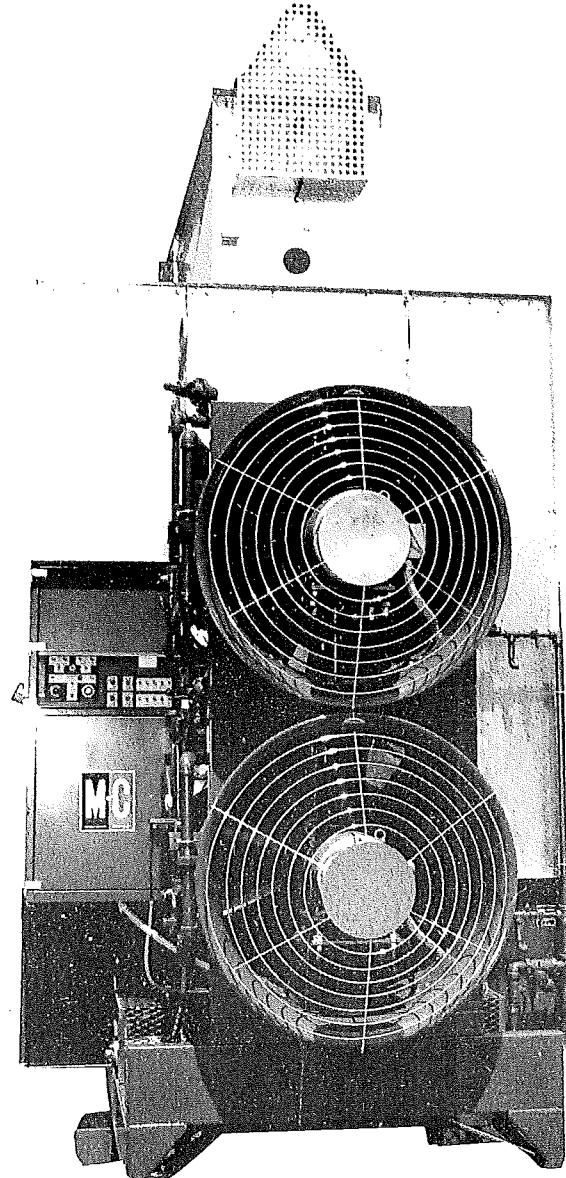


Model 670, 690 & 970

(EM and EMS)

**Continuous Flow
Grain Dryers**

(Starting w/Serial No. 55209)



PARTS CATALOG

Form No. D 324 June 1996

Mathews Company / 500 Industrial Ave., Crystal Lake, IL 60012, U.S.A.
815/459-2210 FAX 815/459-5889

CONTENTS

Page

Introduction

Parts Ordering Instructions	1
Model and Serial Number Location	1
Capscrew Grade Identification	1

Parts

Air Pressure Switch	36
Air Stabilizer	19
Air Straighteners	18
Augers	
Level	34
Unload	2
Belts	
Level Auger	34
Unload Auger	16
Bin Level Indicator	36
Burner	19
Burner Target	18
Cabinets	
115V Control Cabinet - 670, 690 & 970	28
Circuit Breakers - Level Auger, Unload Auger and Fan Motor	38-39
Coils	
Magnetic Starter - 115V	38-39
1 ¼" Solenoid Valve	24-25
½" Solenoid Valve	23
Contacts - For Magnetic Starters	40
Control Panel Lights, Switches and Controls	31
Decal Kit - All Models	7
Electrical Components in 115V Control Cabinet	30
Electrode	22
End Panels	
670	10
690	15
970	12
Fans	20
Fan Motors	20
Fan Motor Mount	20
Fan Orifice	21
Fan Orifice Supports	21
Flame Sensing Probe	22
Floor Panels - 670	10
970	12
Guards	
Fan	21
Level Auger Motor	32
SCR Drive	17

Continued on next page

	Page
High Limit Switch	36
Hopper	32
Ignition Board	30
Ignition Wires	22
Interlocks - For Magnetic Starters	40
Jumper Straps - For Magnetic Starters	40
Level Auger	34
Belts	32
Motor	32
Motor Mount	32
Switch Assembly (Bin Level Indicator)	36
Lights, Control Panel	31
LP Gas Liquid Line Piping	23
LP Gas Manifold and Piping	24
Magnetic Starters	38-39
Manifolds	
LP Gas	24
Natural Gas	25
Metering Rolls	2
Mixing Chamber	18
Modulating Valves	26
Modulating Valve Power Elements	26
Modulating Valve Repair Kits	26
Moisture Control	
Potentiometer	31
Moisture Control	30
Thermistor Sensor	36
Motors	38-39
Natural Gas Manifold and Piping	25
Orifice Liners	18
Portabilities	41
Pressure Gauge (Gas)	24-25
Pressure Regulator (LP Gas)	26
Pressure Regulator (LP Gas) Repair Kit	26
Relays	30
Relief Valve - LP Gas	23
SCR Drive Unload System	
Control Board	30
Motor and Gear Box	16
Potentiometer	31

Continued on next page

	Page
Screens	
Base Screens	7
Upper Screens	8
Solenoid Valves	
1 ¼" - LP Gas and Natural Gas	24-25
½" - LP Gas	23
Solenoid Valve Repair Kits	26
Switches, Control Panel	31
Tank Valve - LP Gas	23
Terminal Tracks	30
Thermistor	36
Thermometer	28
Timers	
10 Second - Ignition	30
.1 to 8 Minute Adjustable - Level Auger	30
60 Minute Adjustable - Low Grain Level	30
Transformers	28
Unload Auger 10"	
Auger	2
Belts	16
Extension Kits (Optional) 2 ft., 4 ft. or 6 ft.	37
Motor	16
Pans	16
Unload Shut Off Switch	4
Vaporizer Coil - LP Gas	19
Walkway (Optional)	42

NOTES

INTRODUCTION

Parts Ordering Instructions

1. Order parts from your local M-C Dealer or distributor.
2. Always furnish the Grain Dryer model and serial number. This information is stamped on the serial number plate.
3. When ordering parts be sure to furnish the part number, description and quantity required.

NOTE: Attaching hardware is listed (but not included) with the main part. It must be ordered separately.

4. Inspect all shipments upon receipt. If any packages and/or boxes are missing, or parts are damaged, file a claim with the carrier immediately. Failure to do so may void a claim. Check the shipment against the packing list carefully. Report any shortages to the shipper immediately.
5. Do not return any parts to the Mathews Company without a "Return Goods Authorization" from the factory. All return parts shipments must be shipped prepaid (COD shipments will not be accepted). Shipments must also include the following:
 - A. A letter of explanation including the "Return Goods Authorization Number," your name and address.
 - B. A list of all parts being returned. List must include part numbers, description, quantity, and original invoice number.

Model and Serial Number Location

The model and serial number of your Grain Dryer are stamped on a plate located on the left front end

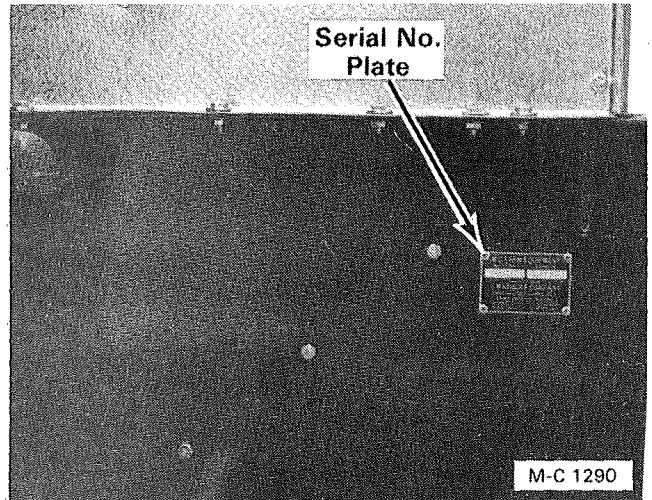


Figure 1

M-C FARM EQUIPMENT	
MODEL NO.	SERIAL NO.
<input type="text"/>	<input type="text"/>

Figure 2

panel, see Figure 1. On late production dryers, the plate is on the dryer front base panel just below the location shown in Figure 1. Record the model and serial number in the blank spaces in Figure 2.

Capscrew Grade Identification

There are four grades of hex-head capscrews. Grade 1 and 2 are common capscrews, grade 5 and 8 are used when greater strength is required. Each grade can be identified by the marking on the head of the capscrew, see chart below.

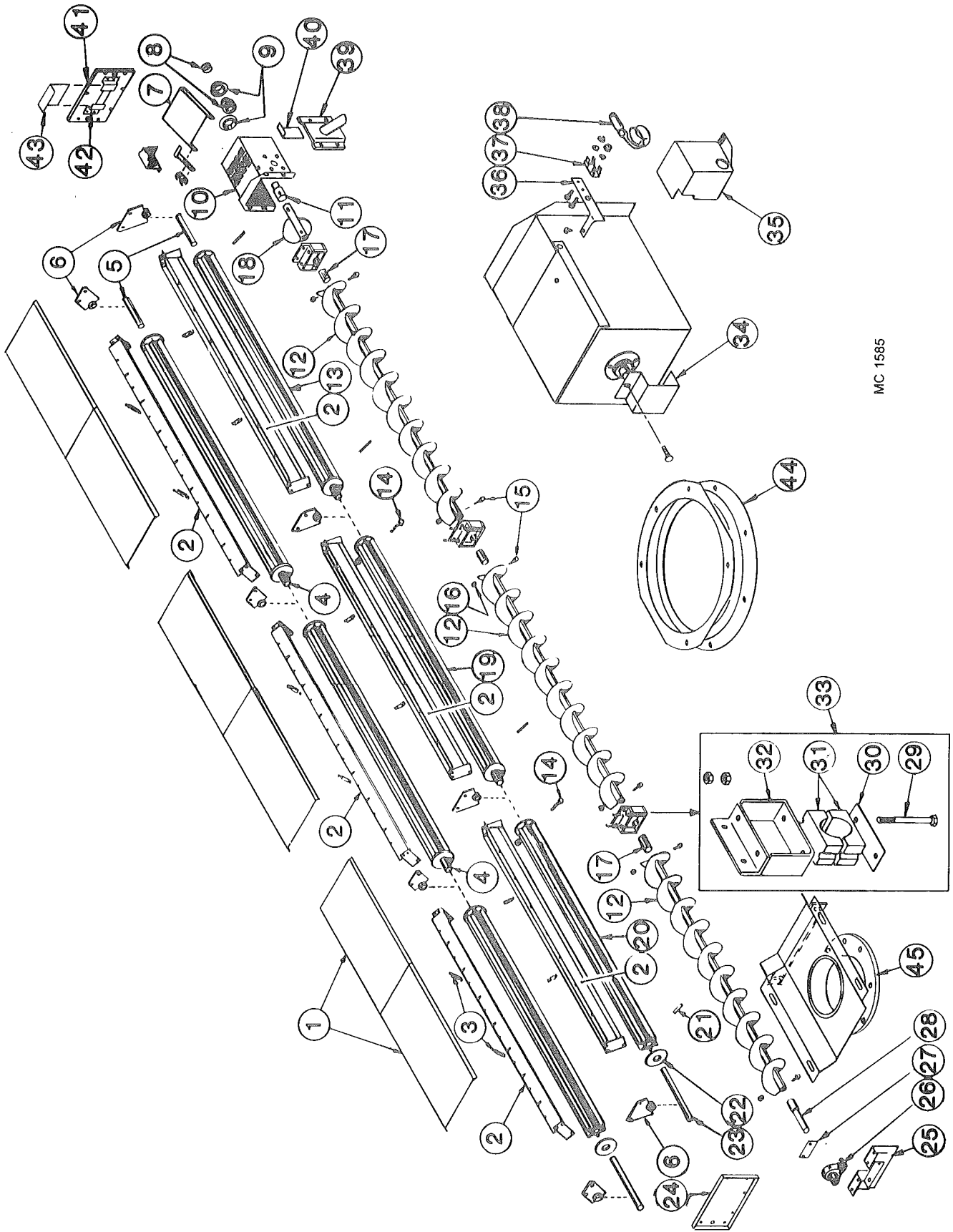
When replacing capscrews, be sure to use the correct size and grade. If a specific grade is not shown as part of the description, the capscrew is a grade 1 or 2.

CAPSCREW GRADE IDENTIFICATION CHART

S.A.E. Grade	Description	Capscrew Head Marking*
1	WILL HAVE A PLAIN HEAD - NO RADIAL LINES	
2	Low or Medium Carbon Steel Not Heat Treated	
5	WILL HAVE 3 RADIAL LINES Quenched and Tempered Medium Carbon Steel	
8	WILL HAVE 6 RADIAL LINES Quenched and Tempered Special Carbon or Alloy Steel	

*The center marking identifies the capscrew manufacturer.

Metering Rolls and Unload Auger



MC 1585

Metering Rolls and Unload Auger

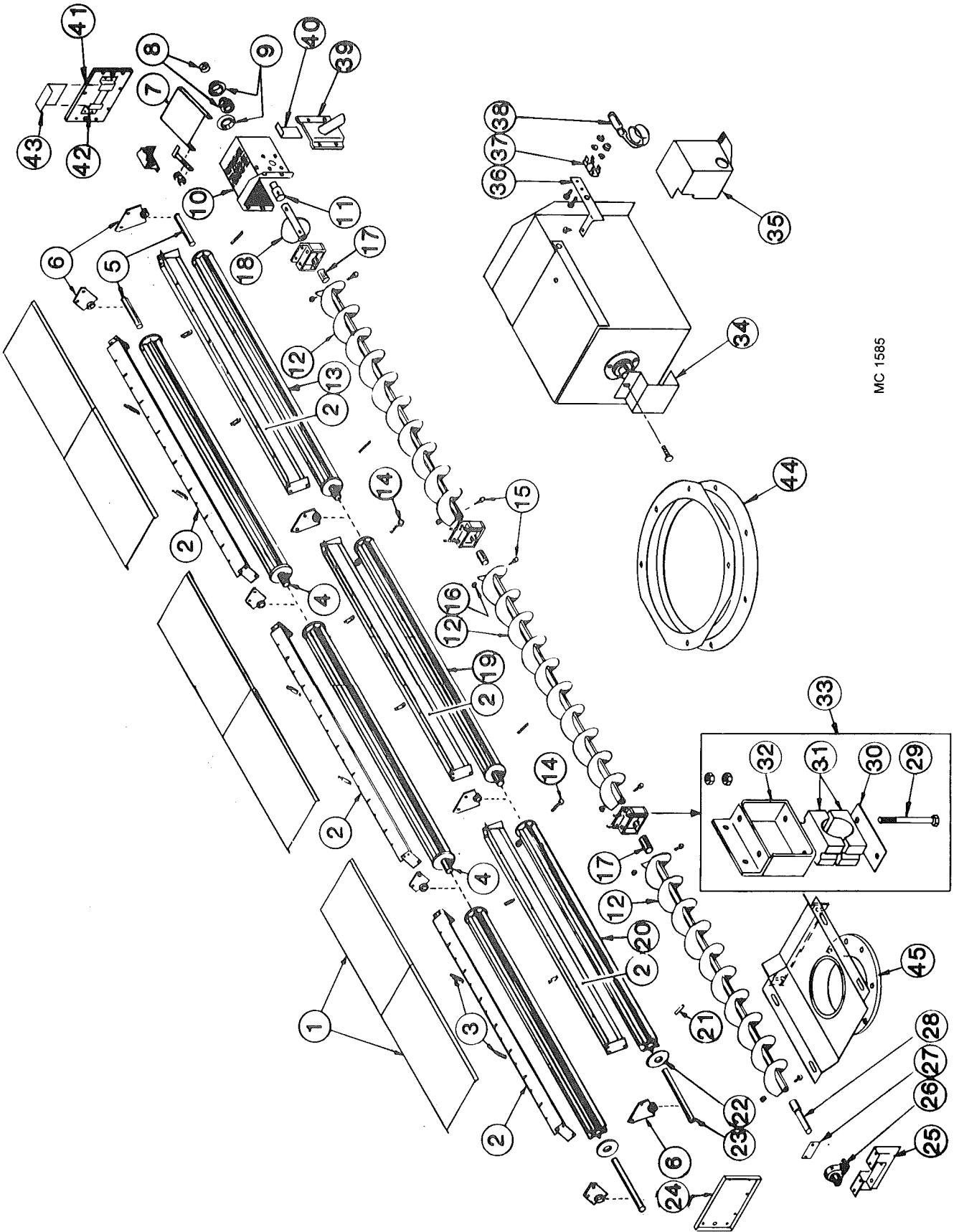
Ref.	Part No.	Qty. (16')	Description	Ref.	Part No.	Qty. (16')	Description
1	128 2890	4	Unload Auger Cover	12	128 0244	2	Unload Auger Section 10" (See Note 2)
	001 8111	8	5/16-18 Clip Nut	13	121 1082	2	Rear Metering Roll Assembly (incl. shafts)
	001 8114	8	5/16-18 x 3/4" Wing Screw	14	000 8114	2	5/16-18 x 2 1/2" Capscrew
	000 8173	8	5/16" Flatwasher		000 8222	2	5/16" Lockwasher
2	128 0225	4	Inner Screen Mount		000 8159	2	5/16-18 Hex Nut
	001 8202	18	5/16-18 x 3/4" Hex Washer Head Bolt	15	000 8229	8	3/8-16 X 2 3/4" Capscrew - Grd.5
	000 8169	18	5/16-18 Flanged Locknut	16	000 8205	8	Top Lock Flanged Nut
3	128 8958	8	Support Rod (3/8" x 4 3/8")	17	128 5618	2	Unload Auger Link
	000 8173	8	5/16" Flatwasher	18	128 0309	1	Standard Auger Weld
	000 8168	24	3/8-16 Flanged Locknut	19	121 1083	-	Center Metering Roll Assembly (incl. shafts)
4	121 5043	2	Rear & Center Metering Roll Shaft - 1 1/4" x 7" (press fit in metering roll)	20	128 1254	2	Front Metering Roll Assembly (incl. shafts)
5	121 5042	2	Rear Metering Roll Stub Shaft - 1 1/4" x 5" (press fit in metering roll)	21	000 8259	3	Roll Pin 5/16" x 1 3/4"
6	128 1063	6	Metering Roll Brg. w/Bronze Bushing	22	121 4438	AR	Metering Roll Washer - 11 Gauge
	001 8202	12	5/16-18 x 3/4" Hex Washer Head Bolt		128 4970	AR	Metering Roll Washer - 16 Gauge
	000 8169	12	5/16-18 Flanged Locknut	23	128 5042	2	Front Metering Roll Shaft - 1 1/4" x 13 1/4" (press fit in metering roll)
7	128 4712	1	Over Load Door	24	128 2894	1	Base Panel Access Door (17 1/2" x 10 1/2")
	001 8210	2	3/8-16 x 3/4" Hex Washer Head Bolt		001 8284	14	5/16-12 x 1/2" Self Tapping Screw
	000 8205	2	3/8-16 Top Lock Flanged Nut	25	128 0247	1	Unload Auger Front Plate
8	001 6003	1	1 1/4" Bearing w/Lock Collar		001 8210	4	3/8-16 x 3/4" Hex Washer Head Bolt
9	001 6004	2	1 1/4" Bearing Flangette		000 8168	4	3/8-16 Flanged Locknut
	001 8209	3	3/8-16 x 1" Hex Washer Head Bolt				
	000 8168	3	3/8-16 Flanged Locknut				
10	128 0345	1	Unload Auger Discharge Round (Front Unload - See Note 1)				
	001 8210	6	3/8-16 x 3/4" Hex Washer Head Bolt				
	000 8205	6	3/8-16 Top Lock Flanged Nut				
11	124 5611	1	Unload Auger Output Shaft (Front Unload - See Note 1)				

NOTE 2: Unload Auger Sections 10" up to Serial #54014 use the following:

- 128 0243 Front
- 128 0245 Rear
- 128 0244 Center

NOTE 1: Dryers w/Front Unload - Ref. 10 use 127 4431 and Ref. 11 use 128 5994 output shaft.

Metering Rolls and Unload Auger

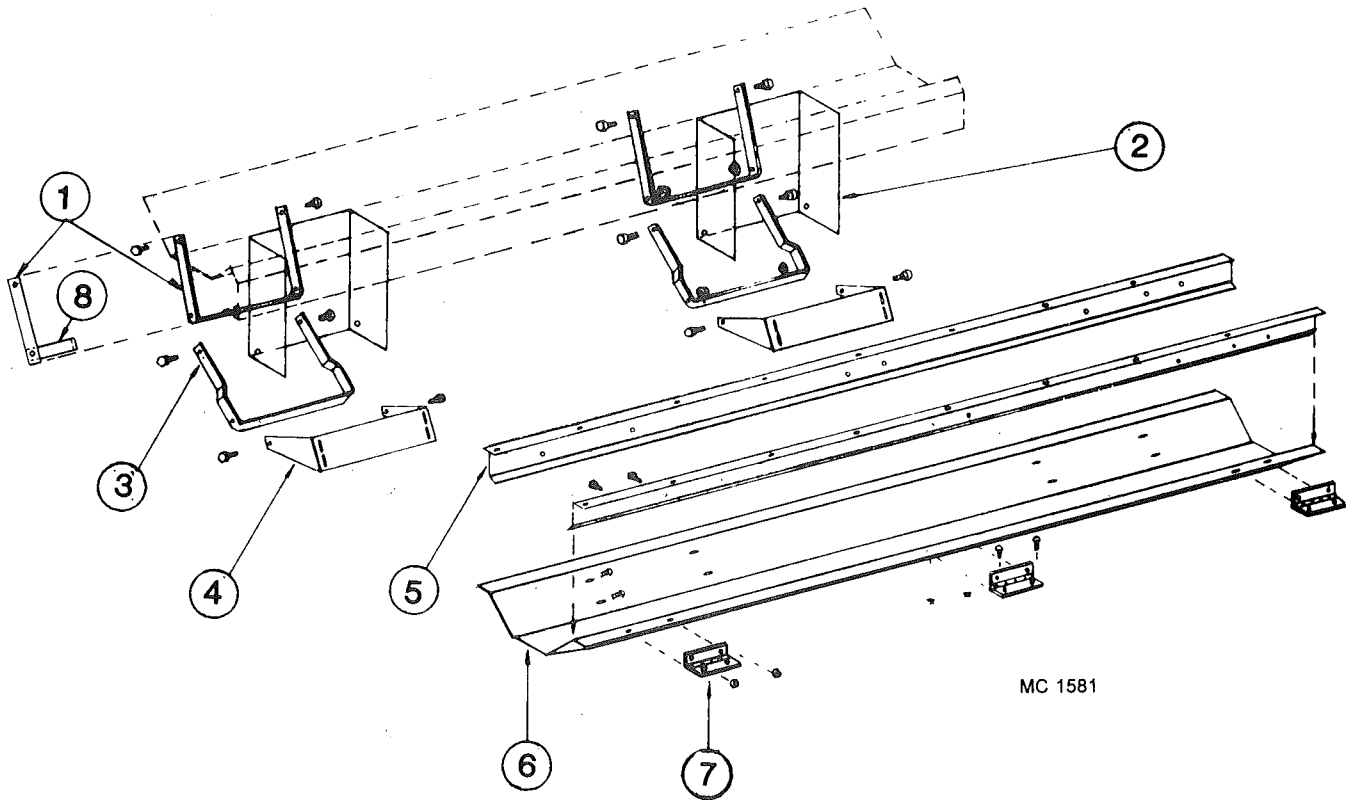


MC 1585

Metering Rolls and Unload Auger

Ref.	Part No.	Qty. (16')	Qty. (24')	Description
26	001 6011	1	1	1-7/16" Bore Billow Block Bearing
	001 8299	2	2	½-13 x 1 ¼" Capscrew-Grd. 8 w/Nylock
	001 8257	2	2	½" SAE Flatwasher
	000 8163	2	2	½-13 Hex Nut
27	128 3008	1	1	Front Seal Plate
	000 8184	4	4	8-18 x ½" Sheet Metal Screw
28	124 5610	1	1	Unload Auger Input Shaft
29	001 8168	4	6	½-13 x 4 ½" Capscrew - Grd. 5
	000 8180	4	6	½" Lockwasher
	000 8163	8	12	½-13 Hex Nut
30	128 0285	2	3	Unload Auger Support Weld
31	128 6020	2	3	Wood Bearing 1-5/16" (2 Halves)
32	128 0287	2	3	Unload Auger Bearing Bracket
	000 8137	4	6	½-13 x 1 ¼" Capscrew - Grd. 5
	000 8180	4	6	½" Lockwasher
	000 8163	4	6	½-13 Hex Nut
33	122 1007	2	3	Unload Auger Bearing Kit (Incl. Ref. 30 thru 33 in quantities required for one bearing)
34	128 3011	1	1	Stub Shaft Guard
35	128 4896	1	1	Shut Off Switch Cover
	001 8284	2	2	5/16-12 x ½" Self-Tapping Screw
36	128 2937	1	1	Switch Mount
37	120 6801	1	1	Switch Mount Clip
	000 8282	2	2	6-32 x ¼" Machine Screw
	000 8185	2	2	6-32 Flanged Locknut
38	120 6800	1	1	Shut Off Switch
39	128 0341	1	1	Grain Sampler
40	128 2842	1	1	Slide Gate Door - Sampler
41	128 2954	1	1	Base Panel Access Door w/Slot
42	128 2885	2	2	Access Door Bracket
43	128 2887	1	1	Access Door Slot Cover
44	128 0343	1	1	Discharge Ring 10"
45	128 0331	1	1	10" Front Unload Weldment (Optional Kit #127 9119)

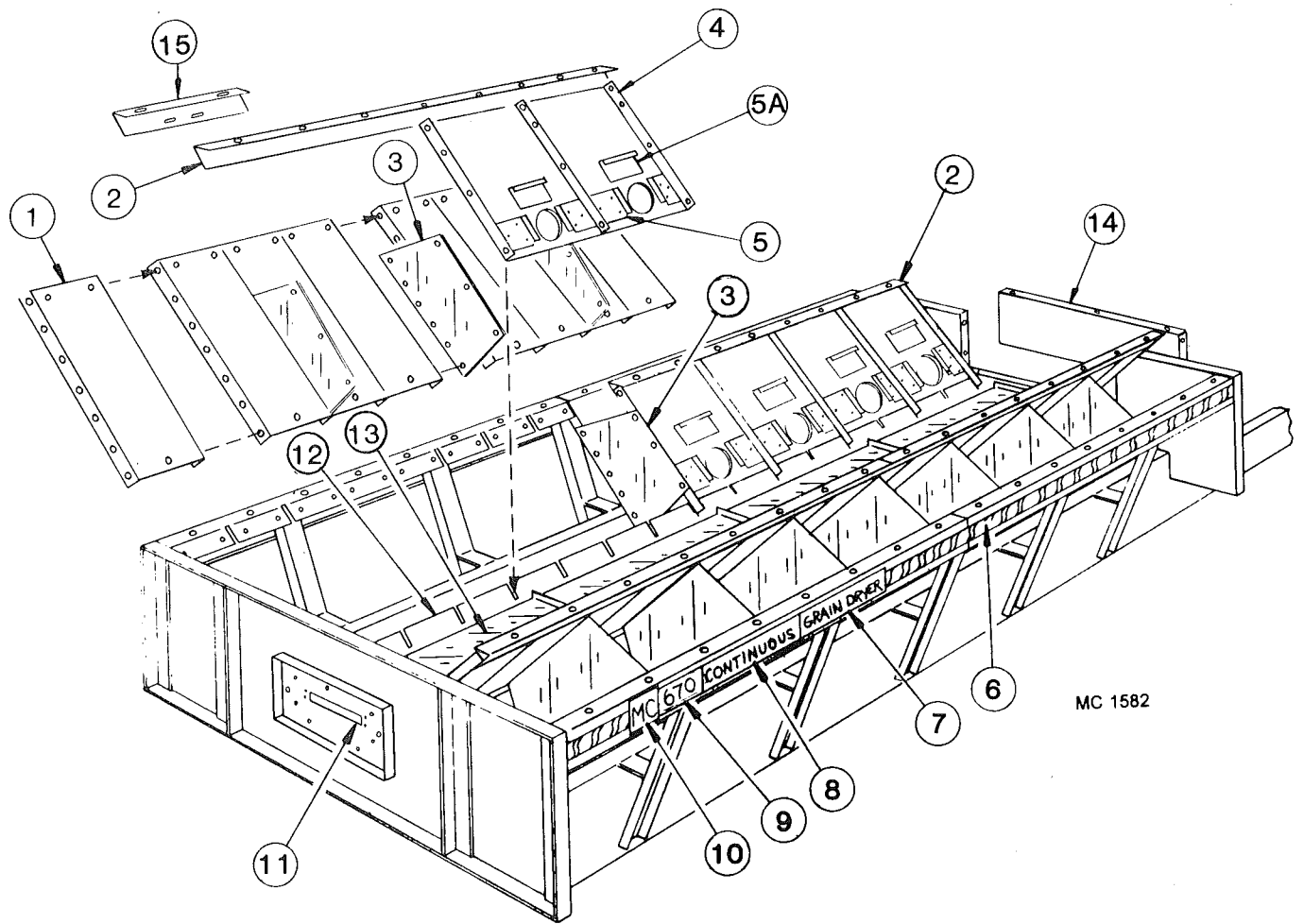
UNLOAD AUGER PANS



MC 1581

Ref. Part No.	Qty. (16')	Qty. (24')	Description
1 128 2029	4	6	Auger Dump Arm - Upper
2 128 8355	4	6	Warning Decal (not shown)
3 128 2030	4	6	Auger Dump Arm - Lower
4 128 2751	4	6	Bottom Link Pivot Base
5 128 2673	4	6	Pan Hinge Angle
6 128 2752	2	3	Auger Dump Pan
7 128 8957	6	9	Hinge
8 128 2032	4	6	Auger Dump Arm Handle

BASE SCREENS

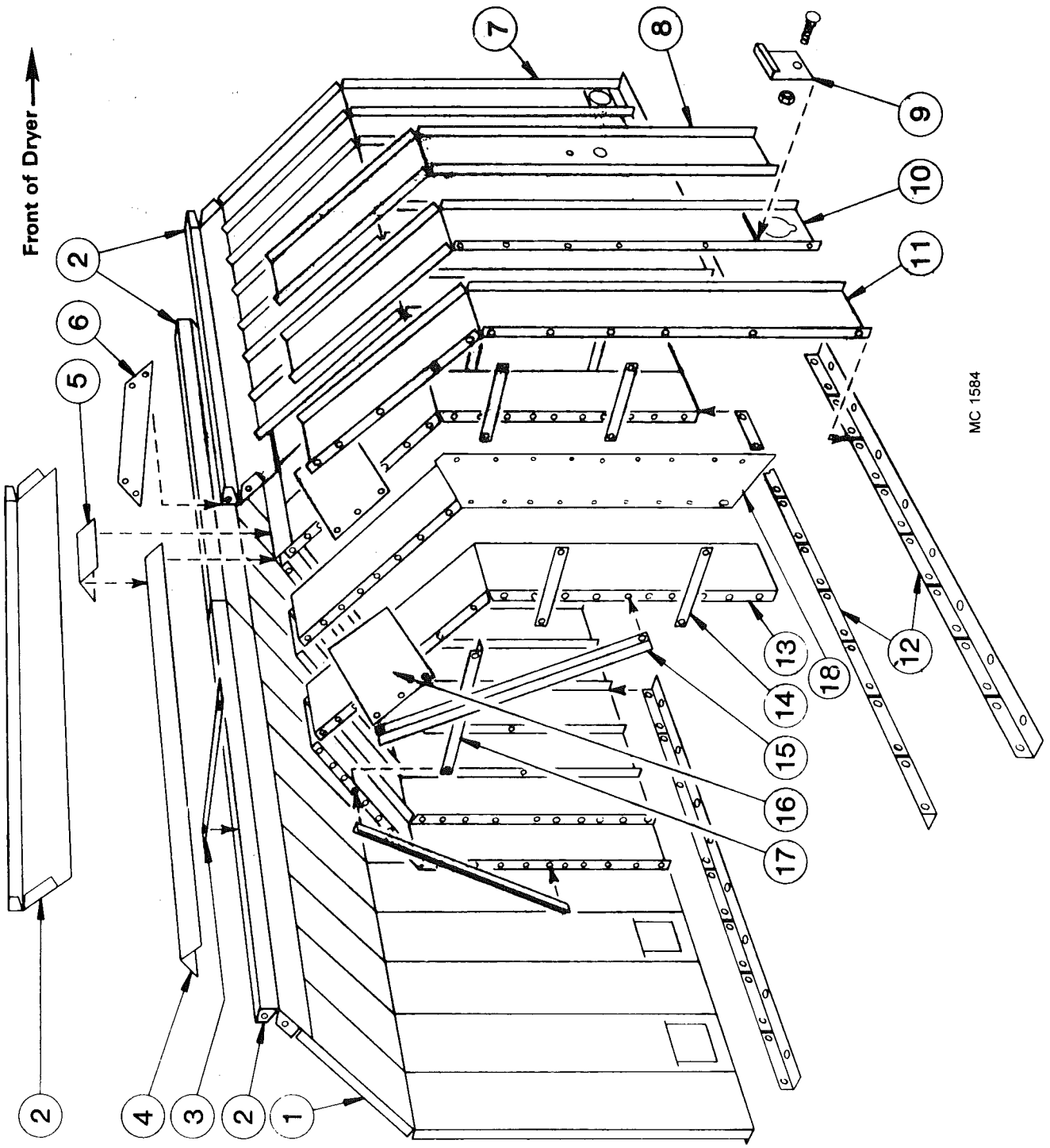


(16') (24')				(16') (24')			
Ref. Part No.	Qty	Qty.	Description	Ref. Part No.	Qty	Qty.	Description
1	---	-	Lower Outer Screen	10	128 8300	2	2 M-C Decal - 5" x 4-9/16"
	127 2945	32	Small Seed (Galv.)	11	128 2954	1	Base Panel Access Door w/Slot
2	128 2739	4	Lower Screen Mount Angle		001 8284	7	5/16-12 x 1/2" Self-Tapping Screw
3	128 2855	14	Lower Screen Stiffener	12	128 0225	4	Inner Screen Mount
4	---	-	Lower Inner Slope Screen w/Clean-Out (24" wide)		001 8202	12	18 5/16-18x 3/4" Hex Washer Head Bolt
	124 2000	16	Galvanized (Std.)		000 8169	12	18 5/16-18 Flanged Locknut
	124 2001	16	Small Seed (Galv.)	13	128 2890	4	Unload Auger Cover
5	124 2866	32	Slope Door Retainer		001 8111	8	12 5/16-18 Clip Nut
	000 8244	96	8-18 x 1/2" Hex Head Sheet Screw		001 8114	8	12 5/16-18x 3/4" Wing Screw
5A	128 3003	16	Slope Door (37" x 13 1/2")		000 8173	8	12 5/16" Flatwasher
6	128 8310	24'	Red & Yellow Stripe Decal - 2 1/2"	14	128 4570	1	Base Filler Panel-37x13 1/2"
7	128 8309	2	"Grain Dryer" Decal		001 8209	12	12 3/8-16 x 1" Hex Washer Head Bolt Grd. 5
8	128 8308	2	"Continuous" Decal		000 8168	12	12 3/8-16 Flanged Locknut
9	128 8361	2	"670" Base Decal	15	120 3070	2	4 Seal Angle
	128 8367	2	"690" Base Decal				
	128 8362	-	"970" Base Decal				

Decal Kit - All Models - 128 9017

Kit contains all decals except dryer model decals. They must be ordered separately. See ref. 9, page 7; ref. 14 & 15, page 11; and ref. 18 & 19, page 13.

UPPER SCREENS



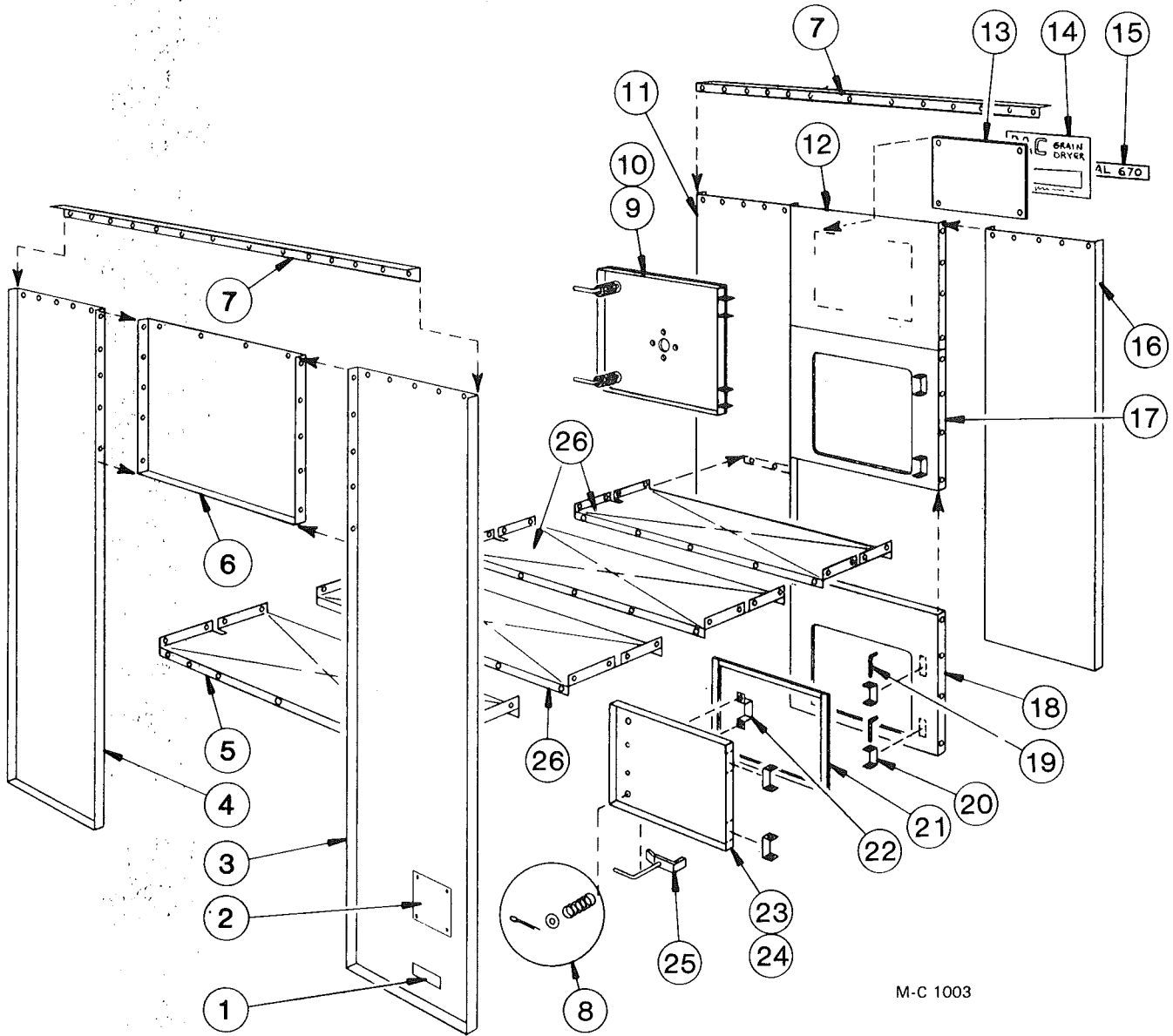
MC 1584

UPPER SCREENS

Ref.	Part No.	(16') (24')		Description
		Qty	Qty.	
1	-----	-	-	Outer End Screen w/o Quick Drain
	021 2946	2	2	Galvanized (Std.)
	127 2967	2	2	Small Screen (Galv.)
	123 5213	2	2	Aluminum
2	129 2832	4	6	Hopper Joiner Angle
3	129 2947	2	3	Stiffener Strap
4	021 2950	2	3	Hopper Cap
5	128 3075	1	2	Seal Angle
6	129 2831	1	2	Joiner Plate
7	-----	-	-	Outer End Screen w/Quick Drain
	128 3002	2	2	Galvanized (Std.)
	127 2963	2	2	Small Seed (Galv.)
	123 5210	2	2	Aluminum
8	-----	-	-	Moisture Control Screen
	021 2947	1	1	Galvanized (Std.)
	127 2966	1	1	Small Seed (Galv.)
	123 5214	1	1	Aluminum
9	-----	-	-	Quick Drain Door
	127 2950	16	24	Galvanized (Std.)
	127 2974	16	24	Small Seed (Galv.)
	001 8269	16	24	3/8-16 x 3/4" Carriage Bolt
	000 8168	16	24	3/8-16 Flanged Locknut
10	-----	-	-	Outer Screen w/Quick Drain
	128 3001	14	22	Galvanized (Std.)
	127 2965	14	22	Small Screen (Galv.)
	123 5212	14	22	Aluminum
11	-----	-	-	Outer Screen w/o Quick Drain
	021 2945	13	21	Galvanized (Std.)
	127 2964	13	21	Small Screen (Galv.)
	123 5211	13	21	Aluminum
12	125 2732	8	12	Screen Mount Angle
13	-----	-	-	Inner Screen
	021 2949	32	48	Galvanized (Std.)
	127 2968	32	48	Small Seed (Galv.)
14	121 3007	60	92	Stiffener Strap
15	128 2663	14	22	Inner Brace
16	128 3072	14	22	Peak Screen Stiffener
17	021 2600	7	11	Inner Cross Tie
18	128 3076	2	4	Divider Panel

End Panels and Floor Panels (Model 670)

← FRONT



M-C 1003

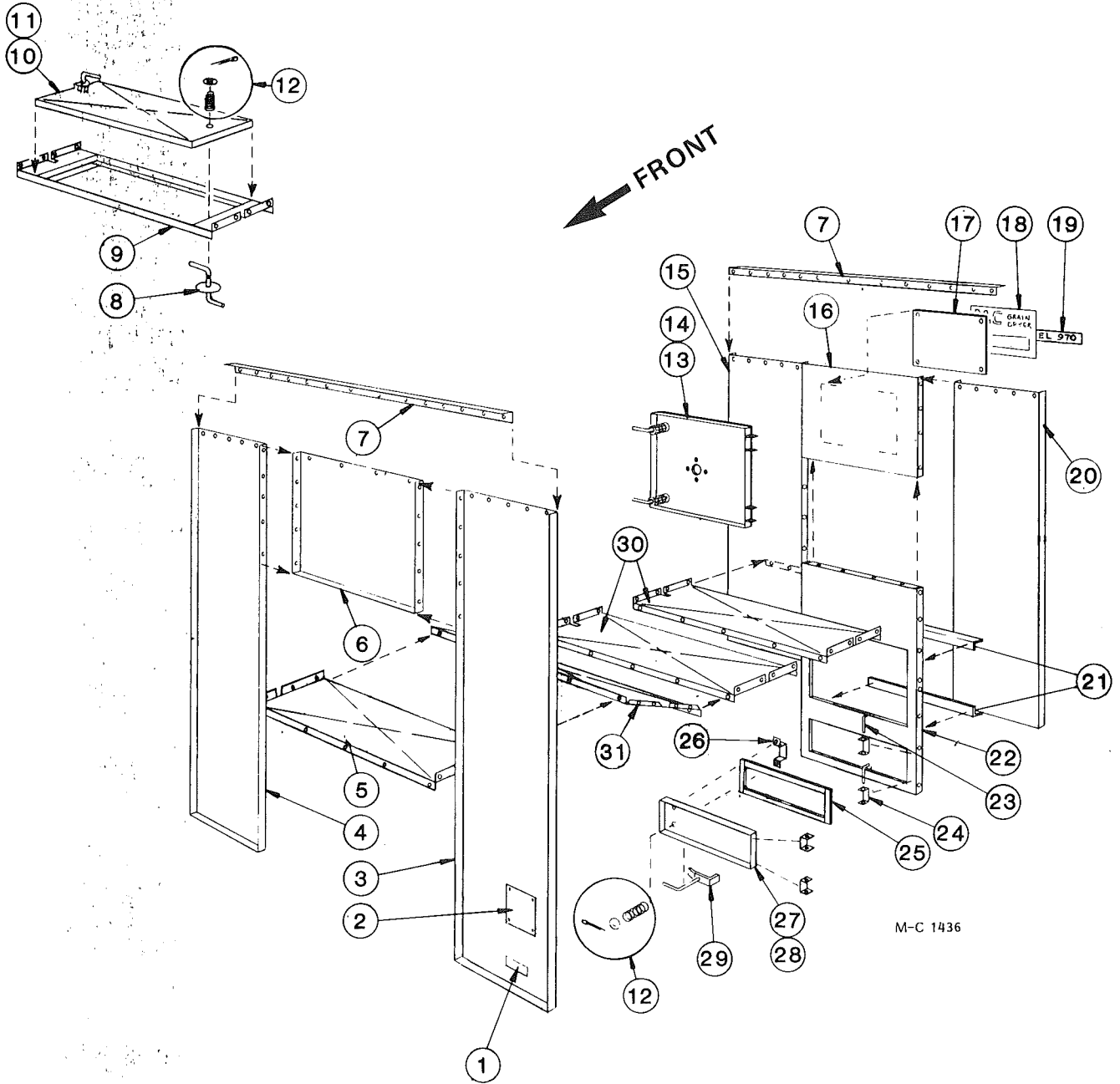
End Panels and Floor Panels

(Model 670)

Ref.	Part No.	Qty.	Description
1	121 8310	1	"Made in USA" - Decal
2	127 8300	1	"CGA" Dryer Plate (Canada only)
3	124 2836	1	Left Front Panel
4	124 2835	1	Right Front Panel
5	128 2920	1	Front Unit Floor Panel
6	128 2921	1	Panel Above Fan
7	021 2602	2	End Panel to Hopper Joiner Angle
8	001 8256	-	Spring - 5/8" ID x 2"
	000 8174	-	3/8" Flatwasher
	000 8199	-	1/8" x 1" Cotter Pin
9	128 1183	1	Upper Rear Door Ass'y (Incl. ref. 12, 14, 24, 25, 26, & 29)
10	128 2957	1	Upper Rear Door Panel
11	021 2832	1	Right Rear End Panel
12	128 2919	1	Panel Above Door
13	128 2999	1	Decal Mount Plate
14	128 8331	1	Large Decal - See note
15	128 8359	1	670 Model Decal
16	021 2833	1	Left Rear End Panel
17	128 2715	1	Upper Door Frame
18	128 2753	1	Lower Door Frame
19	128 5201	4	Hinge Pin
20	128 2740	8	Door Hinge
	000 8212	16	¼ - 20 x ½" Truss Hd. Screw
	000 8167	16	¼ - 20 Flanged Locknut
21	121 8966	-	Weather Stripping (Order ft. reqd.)
22	121 2887	2	Door Handle
23	128 1902	1	Lower Rear Door Ass'y (Incl. ref. 12, 24, 25, 26, 28 & 29)
24	128 3006	1	Lower Door Rear Panel
25	121 0414	4	Latch and Handle
26	121 2928	7	Unit Floor Panel

NOTE: This decal is imprinted "Model 975." Order one of ref. 15 to be placed over "Model 975."

Bottom Module End Panels and Floor Panels (Model 970)



Bottom Module End Panels and Floor Panels

(Model 970)

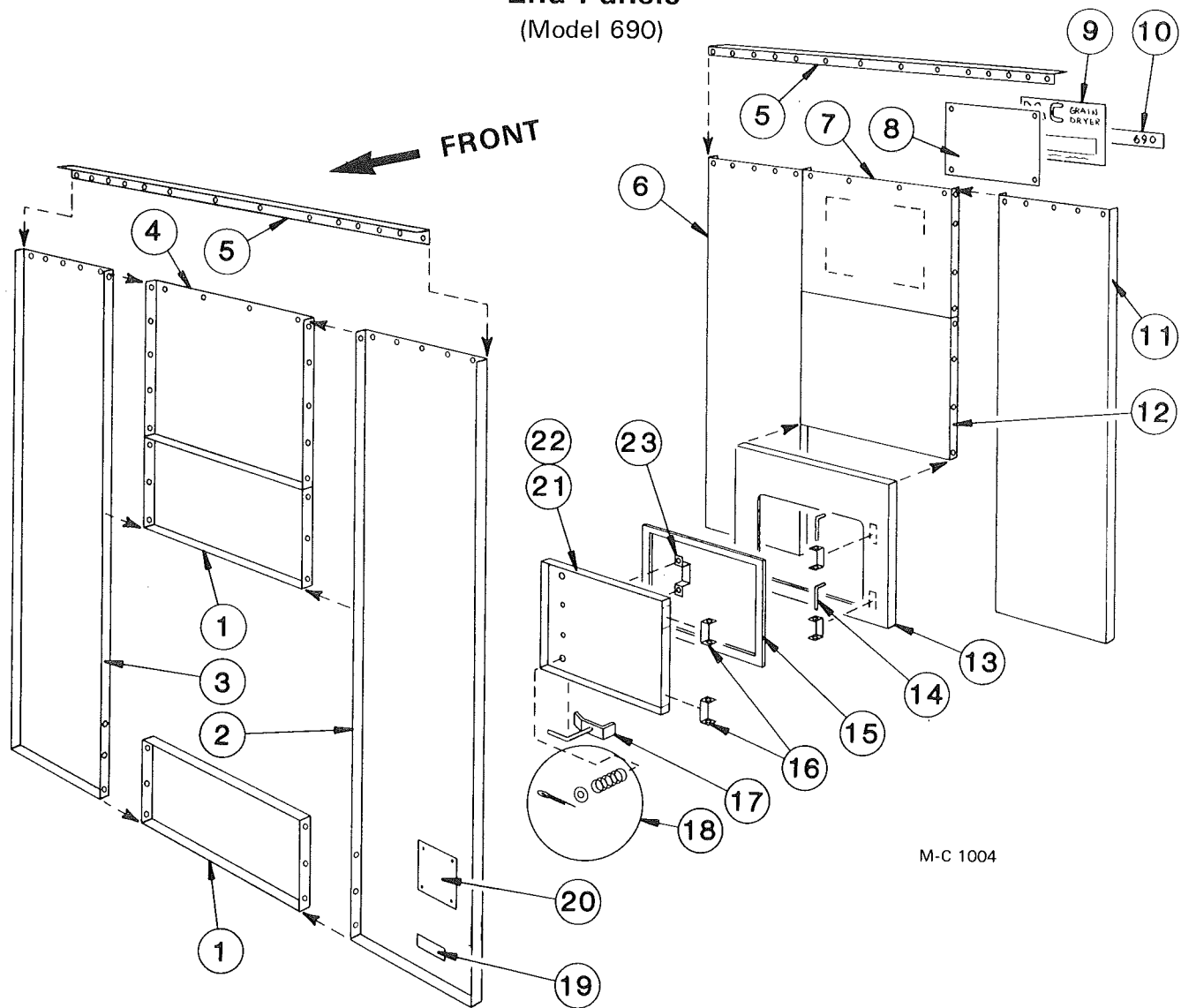
Ref.	Part No.	Qty.	Description
1	121 8310	1	"Made in USA" - Decal
2	127 8300	1	"CGA" Dryer Plate (Canada only)
3	124 2836	1	Left Front Panel
4	124 2835	1	Right Front Panel
5	128 2920	1	Front Unit Floor Panel
6	128 2921	1	Panel Above Fan
7	021 2602	2	End Panel to Hopper Joiner Angle
8	121 0302	2	Latch and Handle
9	121 0299	1	Heat Chamber Door Frame
10	121 1113	1	Heat Chamber Door Assembly (Incl. ref.)
11	121 2970	1	Heat Chamber Door Panel
12	001 8256	-	Spring - 5/8" ID x 2"
	000 8174	-	3/8" Flatwasher
	000 8199	-	1/8" x 1" Cotter Pin
13	128 1183	1	Upper Rear Door Ass'y (Incl. ref. 12, 14, 24, 25, 26, & 29)
14	128 2957	1	Upper Rear Door Panel
15	021 2832	1	Right Rear End Panel
16	128 2919	1	Panel Above Door
17	128 2999	1	Decal Mount Plate
18	128 8331	1	Large Decal - See note
19	128 8360	1	970 Model Decal
20	021 2833	1	Left Rear End Panel
21	124 4463	1	Brace, Rear Door Frame
22	128 2755	1	Dryer Rear Door Frame
23	128 5201	4	Hinge Pin
24	128 2740	8	Door Hinge
25	121 8966	-	Weather Stripping (Order ft. reqd.)
26	121 2887	2	Door Handle
	128 8251		8-18 x 1/2" Sheet Metal Screws
27	128 3009	1	Rear Door
28			Blank
29	121 0414		Latch and Handle
30	121 2928	4	Unit Floor Panel
31	124 2845	10	Slope Unit Floor Panel

NOTE: This decal is imprinted "Model 975." Order one of ref. 19 to be placed over "Model 975."

This page intentionally blank.

End Panels

(Model 690)

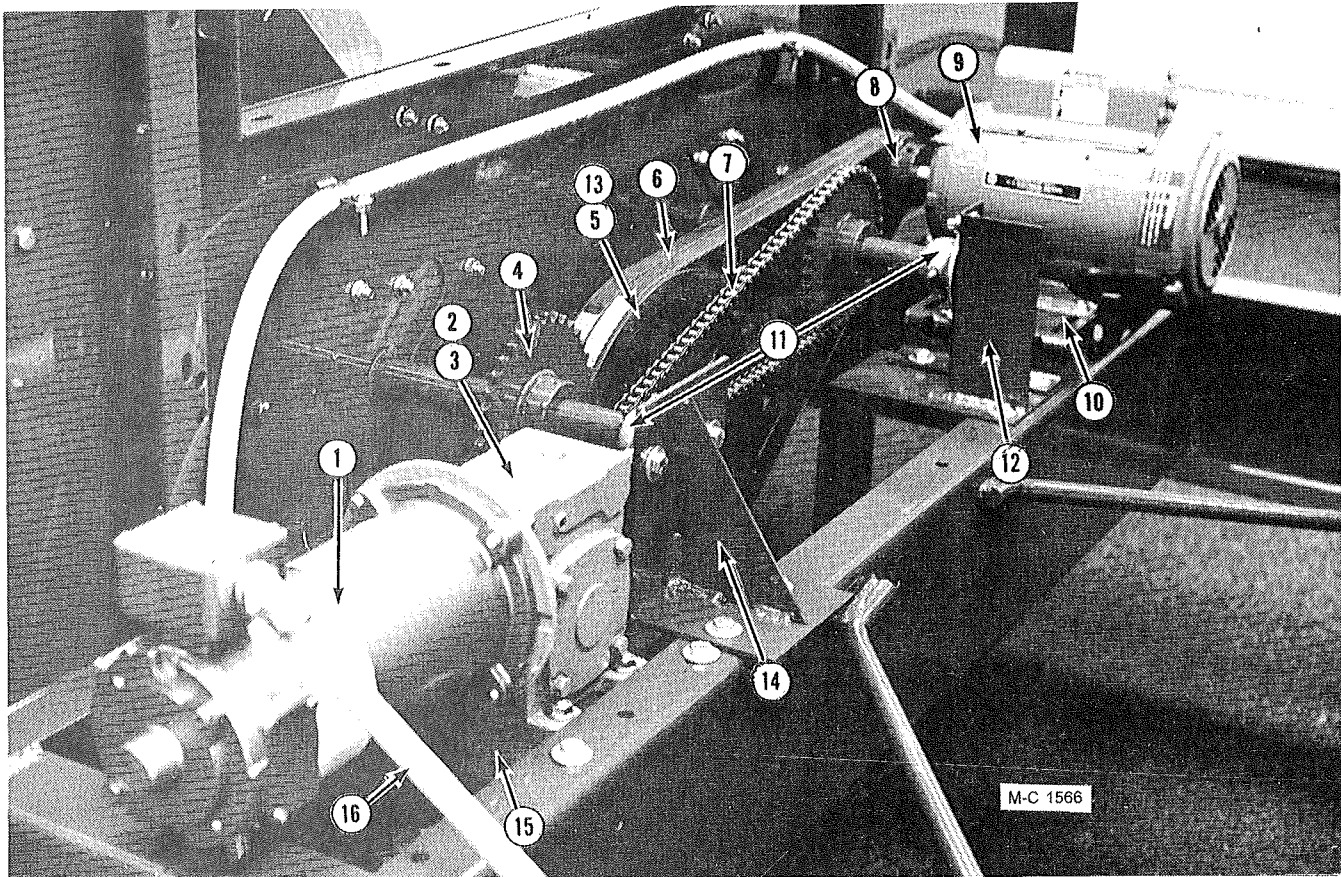


M-C 1004

Ref.	Part No.	Qty.	Description	Ref.	Part No.	Qty.	Description
1	128 4969	2	Spacer Panel	15	121 8966	—	Weather Stripping (Order ft. reqd.)
2	124 2836	1	Left Front Panel	16	128 2740	4	Door Hinge
3	124 2835	1	Right Front Panel		000 8212	8	¼ - 20 x ½" Truss Hd. Screw
4	128 2921	1	Panel Above Fan		000 8167	8	¼ - 20 Flanged Locknut
5	021 2602	2	End Panel to Hopper Joiner Angle	17	121 0414	2	Latch and Handle
6	021 2832	1	Right Rear End Panel	18	001 8256	2	Spring - 5/8" ID x 2"
7	128 2919	1	Panel Above Door (37" x 30")		000 8174	4	3/8" Flatwasher
8	128 2999	1	Decal Mount Plate		000 8199	2	1/8" x 1" Cotter Pin
9	128 8331	1	Large Decal - See note	19	121 8310	1	"Made in USA" - Decal
10	128 8368	1	690 Model Decal	20	127 8300	1	"CGA" Dryer Plate (Canada only)
11	021 2833	1	Left Rear End Panel	21	128 1183	1	Rear Door Ass'y. (Incl. ref. 15 thru 18, 22, & 23)
12	128 2888	1	Filler Panel (37" x 33")	22	128 2957	1	Rear Door Panel
13	128 2715	1	Door Frame	23	121 2887	1	Door Handle
14	128 5201	2	Hinge Pin				

NOTE: This decal is imprinted "Model 975." Order ref. 10 to be placed over "Model 975."

SCR DRIVE MOTOR AND GEAR BOX



Ref. Part No.	Qty.	Description	Ref. Part No.	Qty.	Description
1	124 6837	1 DC Motor - 1/3 HP	9	127 6860	- 230/460V 1.5HP 3Ø Motor
	122 8613	- DC Motor Brush		121 6861	- 230/460V 2HP 3Ø Motor
2	124 6624	1 SCR Gear Box (Incl. 3/16" x 1" Key - 001 5110)	001 5112	1	Key - 3/16" x 1 5/8" (For 1 1/2 HP motor)
	128 8947	1 Pint of Mobil SHC 634 Oil	001 5114	1	Key - 3/16" x 1 5/8" (For 2 HP motor)
	000 8123	5 5/8-16 x 1 1/4" Capscrew	128 1810	1	Motor to Cabinet Wire Ass'y
	000 8174	5 3/8" Flatwasher	000 8110	4	5/16-18 x 1 1/2" Capscrew
	000 8168	5 3/8" Flanged Locknut	000 8108	3	5/16-18 x 1" Capscrew
3	128 6422	1 SCR Gear Box Sprocket (not shown) RC40-12T-3/4" Bore	000 8173	4	5/16" Flatwasher
			000 8169	4	5/16-18 Flanged Locknut
4	128 6423	2 Sprocket-RC40-36T-1 1/4" Bore	10	124 4214	1 Unload Auger Motor Mt.
	000 8298	2 Woodruff Key - 1/4" x 3/4"	000 8121	4	3/8-16 x 1" Capscrew
5	021 6201	1 Pulley-2B x 13.6 SK	001 8132	2	3/8-16 x 4" "J" Bolt
	001 5130	1 Key - 3/8" x 1"	000 8174	5	3/8" Flatwasher.
6	021 6100	1 B-65 Belts (Matched Set of 2)	000 8168	5	3/8-16 Flanged Locknut
7	128 6315	1 Chain - RC-40 x 130 Pitch	11	121 6022	2 1 1/4" Outboard Brg.
	002 6309	- Connecting Link	000 8121	4	3/8-16 x 1" Capscrew
8	121 6210	1 Pulley - 2B - 3-3/16" OD - 5/8" Bore	000 8174	4	3/8" Flatwasher
	121 6203	1 Pulley - 2B - 3-3/16" OD - 7/8" Bore	000 8168	4	3/8-16 Flanged Locknut
			12	128 0257	1 Gear Mt. Motor Weld.
			000 8119	4	3/8-16 x 3/4" Capscrew
			000 8174	4	3/8" Flatwasher
			000 8168	4	3/8-16 Flanged Locknut

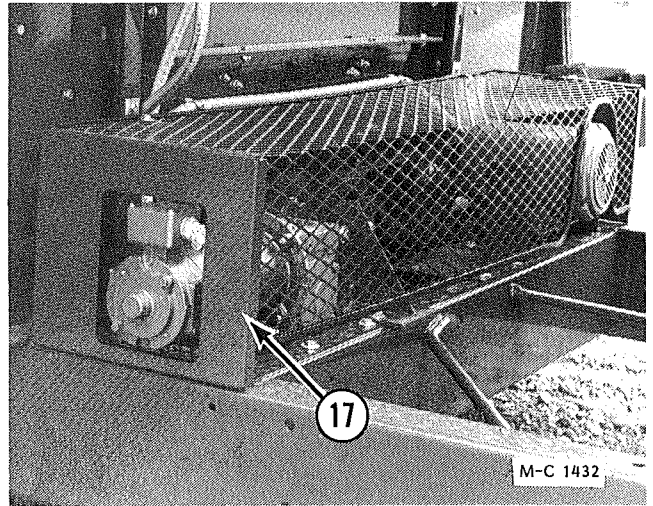
Continued on next page

SCR DRIVE MOTOR AND GEAR BOX

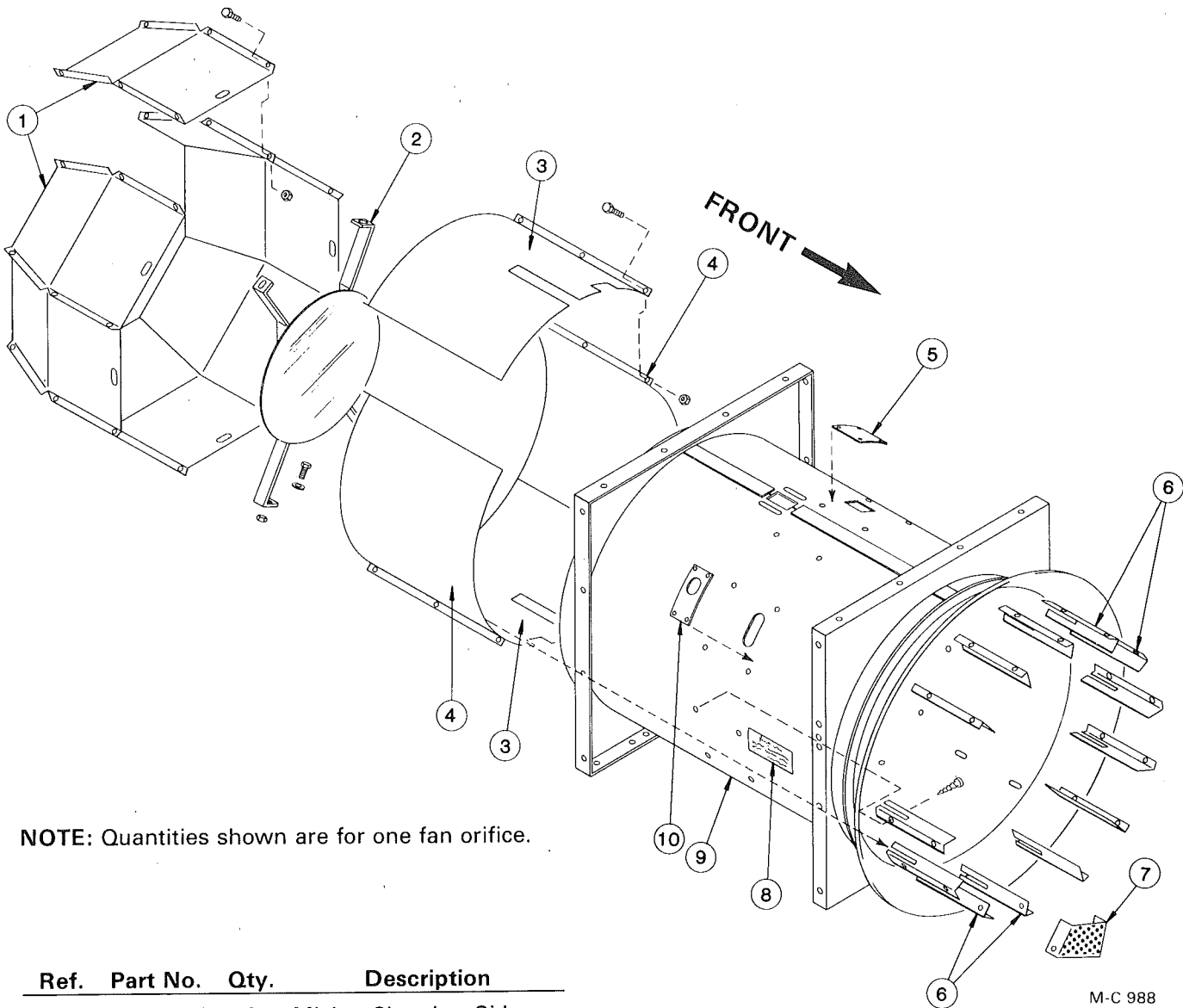
Ref.	Part No.	Qty.	Description
13	001 6202	1	SK Bushing - 1-7/16" Bore (Incl. capscrews)
14	128 0191	1	Outboard Bearing Mount
15	124 4456	1	Gear Box Mount
	000 8119	4	3/8-16 x 3/4" Capscrew
	000 8174	4	3/8" Flatwasher
	000 8168	4	3/8-16 Flanged Locknut
16	128 1999	1	SCR Motor to Cabinet Flexible Conduit (40")
17	128 0268	1	Drive Guard
	128 8951	2	Rubber Strap w/Hook
	001 3302	2	Angle Clip
	000 8121	4	3/8-16 x 1" Capscrew
	000 8174	6	3/8" Flatwasher
	001 8149	4	3/8-16 Two-Way Locknut

Not Shown:

18	000 8301	2	Safety Shield Warning Decal
-	120 6914	2	Chase Nipple - 1/2"
-	121 6906	2	Pipe Clamp
	000 8212	2	1/4-20 x 1/2" Truss Hd. Screw
	000 8167	2	1/4-20 Flanged Locknut



Fan Orifice, Orifice Liners, Burner Target, Mixing Chamber and Air Straighteners

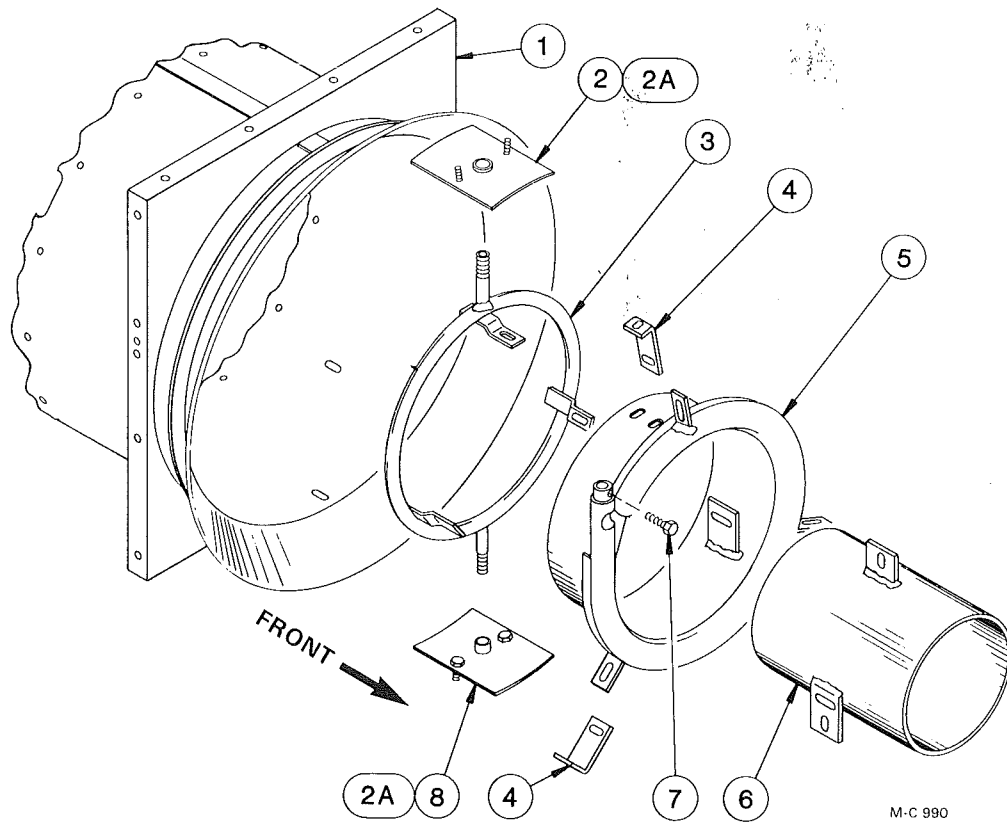


NOTE: Quantities shown are for one fan orifice.

Ref.	Part No.	Qty.	Description
1	128 3074	8	Mixing Chamber Side
	000 8238	27	5/16 - 18 x 1/2" Capscrew
	000 8169	27	5/16 - 18 Flanged Locknut
2	128 0280	1	Burner Target
	000 8108	4	5/16 - 18 x 1" Capscrew - Grd. 5
	000 8173	4	5/16" Flatwasher
	000 8169	4	5/16 - 18 Flanged Locknut
3	124 2830	2	Orifice Liner
	000 8238	12	5/16 - 18 x 1/2" Capscrew
	000 8169	12	5/16 - 18 Flanged Locknut
4	123 5205	2	Orifice Liner
	000 8238	12	5/16 - 18 x 1/2" Capscrew
	000 8169	12	5/16 - 18 Flanged Locknut
5	121 2978	1	Orifice Cover Plate
	001 8104	4	1/4 - 20 x 1/2" Self Tapping Screw

Ref.	Part No.	Qty.	Description
6	124 2831	13	Air Straightener - Slotted
	001 8103	26	10 - 24 x 1/2" Self Tapping Screw
7	128 3004	1	Eddy Baffle
	001 8106	2	10 - 32 x 3/4" Machine Screw
	000 8156	2	10 - 32 Nut
8	128 8363	1	Vaporizer Adj. Decal (LP Gas)
9	128 0267	1	Fan Orifice Weld.
10	124 2832	1	Inlet Pipe Seal
	001 8297	3	8 - 18 x 3/4" Self Tapping Screw

Burner and Air Stabilizer

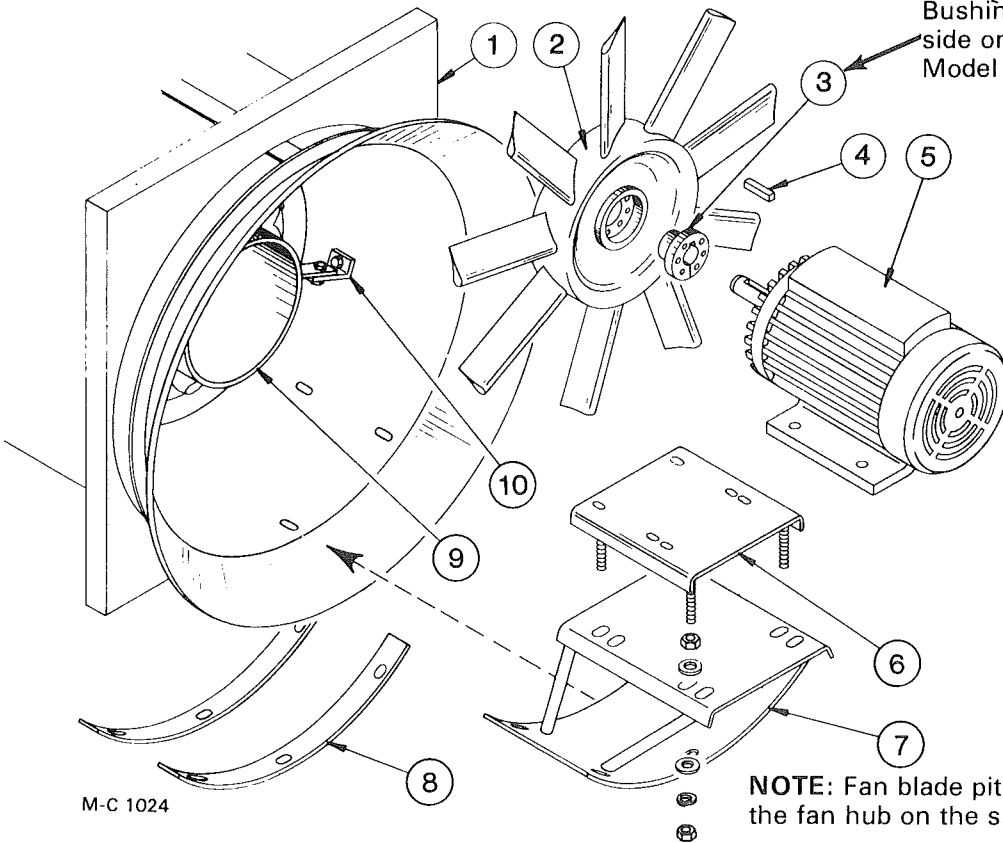


NOTE: Quantities shown are for one burner.

Ref.	Part No.	Qty.	Description	Ref.	Part No.	Qty.	Description
1	128 0267	1	Fan Orifice Weld.	5	128 0286	1	Ring Burner Weld.
2	128 0269	1	Vaporizer Seal - 3/4"	6	121 0131	1	Air Stabilizer
	000 8173	2	5/16" Flatwasher		000 8121	3	3/8" - 16 x 1" Capscrew
	000 8169	2	5/16 - 18 Flanged Locknut		000 8174	3	3/8" Flatwasher
2A	128 0279	1	Seal Plate (Natural Gas)		000 8168	3	3/8" - 16 Flanged Locknut
	000 8173	2	5/18" Flatwasher	7	128 8115	1	5/16 - 18 x 1" Stainless Steel Capscrew
	000 8169	2	5/16 - 18 Flanged Locknut	8	128 0270	1	Vaporizer Seal - 1/2" (LP Gas)
3	128 0274	1	Vaporizer Ring (LP Gas)		000 8173	2	5/16" Flatwasher
	000 8121	3	3/8" - 16 x 1" Capscrew		000 8169	2	5/16 - 18 Flanged Locknut
	000 8174	3	3/8" Flatwasher				
	000 8168		3/8" - 16 Flanged Locknut				
4	121 3459	3	Burner Mtg. Angle				
	000 8121	6	3/8" - 16 x 1" Capscrew				
	000 8174	6	3/8" Flatwasher				
	000 8168	6	3/8" - 16 Flanged Locknut				

Fans and Fan Motor Mount

Bushing is installed from the other side on the Model 690 fan and the Model 970 upper fan.

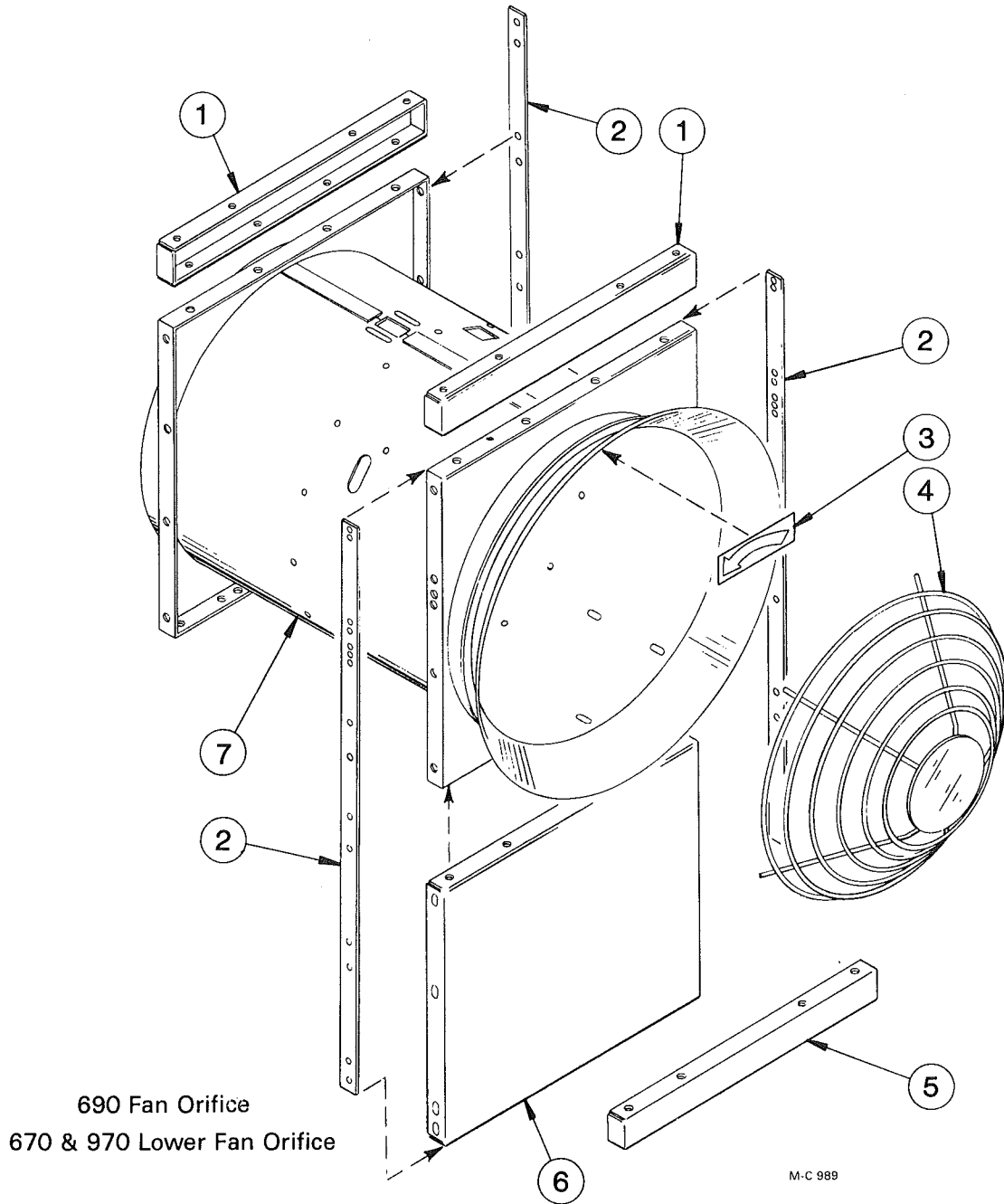


NOTE: Fan blade pitch in degrees is stamped on the fan hub on the side opposite the bushing.

NOTE: Quantities shown are for one fan assembly.

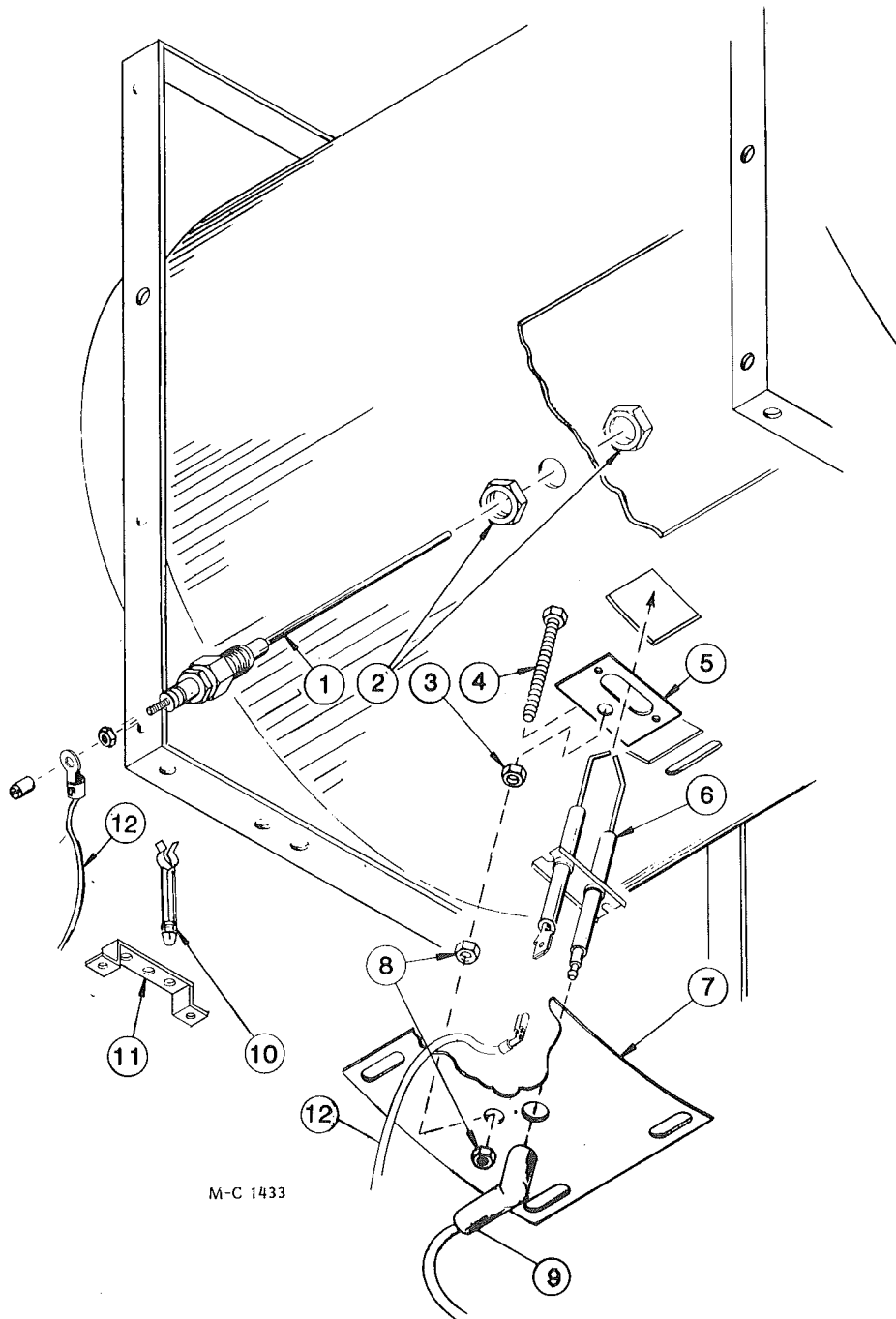
Ref.	Part No.	Qty.	Description	Ref.	Part No.	Qty.	Description
1	128 0267	1	Fan Orifice Weld	000 8293	4	3/8 - 16 x 1/2" Capscrew - Full Thread (7.5 & 10 HP motor)	
2	---	---	Fan	000 8168	4	3/8 - 16 Flanged Locknut	
	121 0331	1	670 Lower (6 blade 18°)	000 8139	4	1/2 - 13 x 1 3/4" Capscrew (20 HP motor)	
	121 0337	1	670 Upper and 970 Lower (9 blade 18°)	000 8170	4	1/2 - 13 Flanged Locknut	
	121 0272	1	690 and 970 Upper (9 blade 27°)	6	128 0167	1	Motor Mt. (7.5 & 10 HP motor)
3	121 6239	---	"SK" Bushing - 1 3/8" Bore (7.5 & 10 HP motors)	121 0343	1	Motor Mt. (20 HP motor)	
	121 6229	---	"SK" Bushing - 1 5/8" Bore (20 HP motors)	000 8165	8	3/4 - 10 Hex Nut	
	121 8117	3	5/16 - 18 x 2" Socket Hd. Capscrew - Grd. 5	000 8177	8	3/4" Flatwasher	
4	001 5124	1	Key - 5/16" x 2 3/8" (7.5 & 10 HP motor)	000 8182	4	3/4" Lockwasher	
	001 5139	1	Key - 3/8" x 3" (20 HP motor)	7	121 0258	1	Motor Mt. Base
5	---	---	Fan Motor	000 8136	5	1/2 - 13 x 1" Carriage Bolt	
	124 6948	1	230/460V 7.5HP 3Ø Motor	000 8170	5	1/2 - 13 Flanged Locknut	
	201 6818	1	230/460V 10HP 3Ø Motor	8	121 3356	2	Orifice Reinforcement
	125 6934	1	230/460V 20HP 3Ø Motor	9	121 0131	1	Air Stabilizer
	124 6816	1	230/460V 7.5HP 1Ø Motor	10	121 3459	3	Burner Mtg. Angle
	124 6818	1	230/460V 10HP 1Ø Motor				
	124 6879	1	230/460V 20HP 1Ø Motor				

Fan Orifice Supports and Fan Guard



Ref.	Part No.	Qty.	Description
1	128 0273	2	Orifice Joiner Channel (670 & 970)
2	128 3463	3	Fan Housing Brace (690)
3	121 8301	1	Counterclockwise Arrow Decal
4	121 8956	—	Fan Guard
5	128 0272	1	Orifice Support Channel (670 & 970)
6	128 4445	1	Spacer Panel - Front (690)
7	128 0267	—	Fan Orifice Weld.

Electrode and Flame Sensing Probe

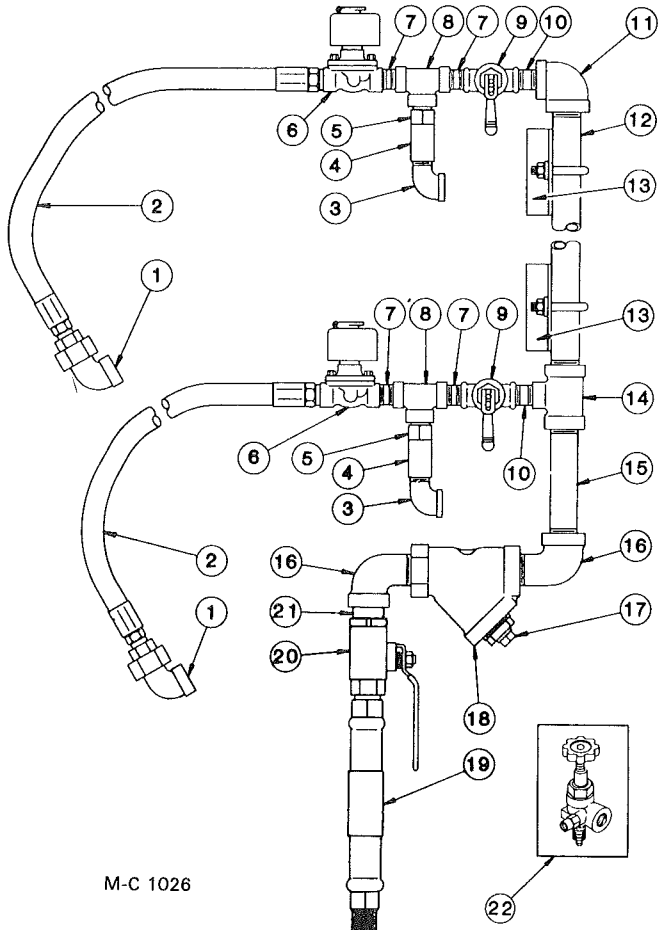


M-C 1433

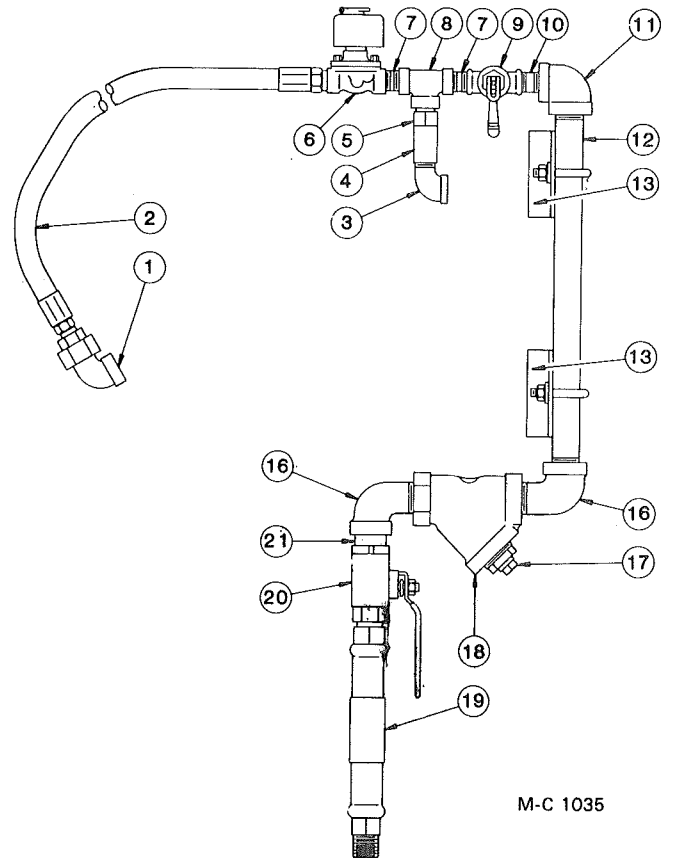
NOTE: Quantities shown are for one burner.

Ref.	Part No.	Qty.	Description	Ref.	Part No.	Qty.	Description
1	124 6872	1	Flame Sensing Probe	7	128 2747	1	Electrode Mt. Seal
2	121 6915	2	Locknut - 1/2"	001 8104	4	1/4 - 20 x 1/2" Self Tapping Screw	
3	000 8162	1	3/8 - 16 Hex Nut	8	000 8168	2	3/8 - 16 Flanged Locknut
4	000 8227	1	3/8 - 16 x 2 3/4" Capscrew - Full Thread	9	122 9003	3	Ignition
5	128 2746	1	Electrode Mt. Plate	10	128 6989	3	Stand-Off Clip
6	128 6995	1	Style 2 Electrode	11	128 4941	1	Wire Support Brkt. (On bottom burner)
	000 8186	2	6 - 32 x 1/2" Machine Screw	12	124 1079	2	Low Voltage Wire Ass'y
	000 8245	2	No. 6 Lockwasher				
	000 8185	2	6 - 32 Flanged Locknut				

LP Gas Liquid Line Piping



670 & 970



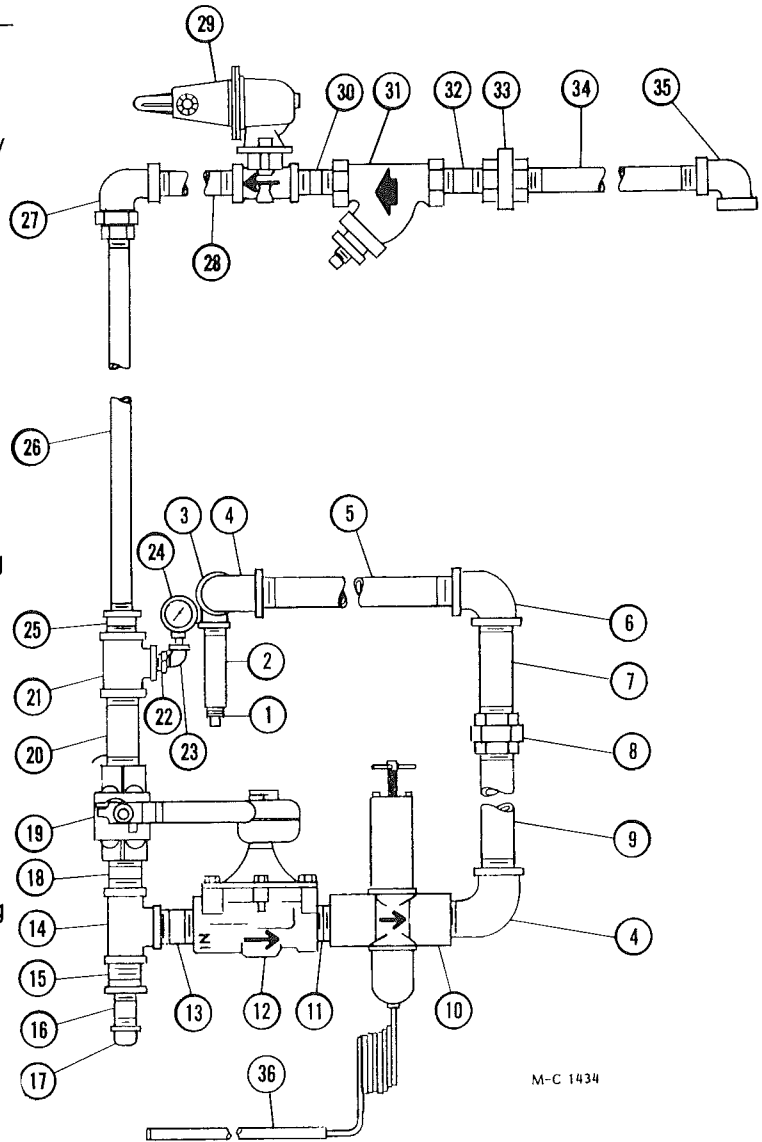
690

Ref.	Part No.	Description
1	128 8010	½" Extra Hvy. Union Elbow
2	128 8400	½" ID x 34" Hose w/Couplings
3	121 8048	½" - 90° Std. Street Elbow
4	121 7013	Relief Valve
5	121 7014	Relief Valve Adapter
6	125 7082	½" Solenoid Valve
7	121 8094	½" x 1½" Extra Hvy. Nipple
8	120 8035	½" Extra Hvy. "T"
9	121 7015	Hand Valve - ½"
10	128 8048	½" x 2½" Extra Hvy. Nipple
11	121 8043	1" to ½" - 90° Extra Hvy. Elbow
12	128 8062	1" x 43" Extra Hvy. Nipple (670 & 970)
	128 8055	1" x 16½" Extra Hvy. Nipple (690)

Ref.	Part No.	Description
13	128 2670	Liquid Line Support
	001 8123	5/16 - 18 x 1¾" "U" Bolt
	000 8106	5/16 - 18 x ¾" Capscrew
	000 8169	5/16 - 18 Flanged Locknut
14	125 8018	1" x 1" x ½" Extra Hvy. "T"
15	128 8043	1" x 6" Extra Hvy. Nipple
16	125 8028	1" - 90° Extra Hvy. Street Elbow
17	121 8081	½" Pipe Plug
18	125 8095	1" Strainer
19	121 7026	Inlet Hose
20	128 8012	Hand Valve - 1"
21	125 8030	1" Close Extra Hvy. Nipple
22	121 7021	LP Gas Tank Valve

LP GAS MANIFOLD AND PIPING (For One Burner)

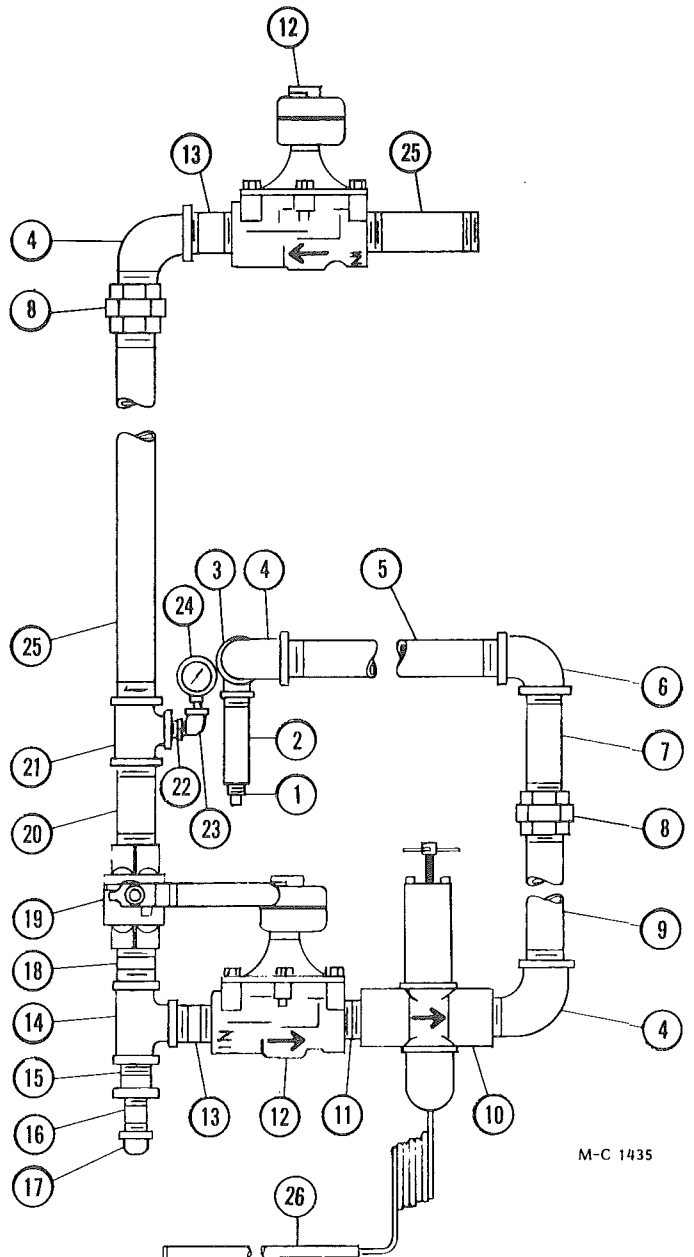
Ref.	Part No.	Qty.	Description
1	021 5711	1	Ring Burner Orifice
2	121 7529	1	Inlet Pipe 3/4 x 6
3	123 8049	1	1 1/4 x 3/4 Reducing Elbow
4	123 8062	2	1 1/4 x 90° Str. Elbow
5	123 8085	1	1 1/4 x 19 Nipple
6	123 8051	1	1 1/4 x 90° Elbow
7	128 8065	1	1 1/4 x 11 Nipple
8	123 8053	1	1 1/4 Union
9	127 8021	1	1 1/4 x 9 1/2 Nipple
10	123 7024	1	1 1/4 Mod. Valve
11	123 8069	1	1 1/4 Close Nipple
12	128 7001	1	1 1/4 Solenoid Valve
13	125 8013	1	1 1/4 x 2 Nipple
14	123 8057	1	1 1/4 Tee
15	123 8078	1	1 1/4 - 3/4 Reducing Bushing
16	121 8077	1	3/4 x 2 Nipple
17	121 8050	1	3/4 Pipe Cap
18	123 8045	1	1 1/4 x 2 1/2 Nipple
19	123 7003	1	Main Burner Hand Valve
20	128 8001	1	1 1/4 x 4 1/2 Nipple
21	127 8131	1	1 1/4 x 1 1/4 x 3/8 Tee
22	127 8132	1	3/8 - 1/4 Reducing Bushing
23	121 8039	1	1/4 X 90° Str. Elbow
24	120 7002	1	Gas Pressure Gauge
25	123 8078	1	1 1/4 - 3/4 Reducing Bushing
26	128 8046	1	3/4 x 13 1/2 Nipple
27	128 8019	1	3/4 Female Union Elbow
28	125 8058	1	3/4 x 2 1/2 Nipple
29	128 7005	1	Gas Regulator LP
30	121 8005	1	3/4 x 1 1/2 Nipple
31	121 8060	1	3/4 Dirt Strainer
32	121 8010	1	3/4 x 6 1/2 Nipple
33	121 8072	1	3/4 Union Ex. Hvy.
34	128 8006	1	3/4 x 6 Nipple
35	121 8027	1	3/4 x 90° Elbow
36	122 7014	1	Power Element 140-250°F (Standard)
	122 7002	1	Power Element 90-210°F (Optional)
	122 6844	1	Power Element 55-155°F (Optional)



NOTE: Components with directional arrows must be installed as shown.

NATURAL GAS MANIFOLD AND PIPING (For One Burner)

Ref.	Part No.	Qty.	Description
1	123 5531	1	Ring Burner Orifice
2	121 7529	1	Inlet Pipe 3/4 x 6
3	123 8049	1	1 1/4 x 3/4 Reducing Elbow
4	123 8062	3	1 1/4 x 90° Str. Elbow
5	123 8085	1	1 1/4 x 19 Nipple
6	123 8051	1	1 1/4 x 90° Elbow
7	128 8065	1	1 1/4 x 11 Nipple
8	123 8053	2	1 1/4 Union
9	127 8021	1	1 1/4 x 9 1/2 Nipple
10	123 7024	1	1 1/4 Mod. Valve
11	123 8069	1	1 1/4 Close Nipple
12	128 7001	2	1 1/4 Solenoid Valve
13	125 8013	2	1 1/4 x 2 Nipple
14	123 8057	1	1 1/4 Tee
15	123 8078	1	1 1/4-3/4 Reducing Bushing
16	121 8077	1	3/4 x 2 Nipple
17	121 8050	1	3/4 Pipe Cap
18	123 8045	1	1 1/4 x 2 1/2 Nipple
19	123 7003	1	Main Burner Hand Valve
20	128 8001	1	1 1/4 x 4 1/2 Nipple
21	127 8131	1	1 1/4 x 1 1/4 x 3/8 Tee
22	127 8132	1	3/8-1/4 Reducing Bushing
23	121 8039	1	1/4 X 90° Str. Elbow
24	120 7002	1	Gas Pressure Gauge
25	128 8024	2	1 1/4 X 5 Nipple
26	122 7036	1	Power Element 140-250°F (Standard)
	122 7023	1	Power Element 90-210°F (Optional)
	122 7019	1	Power Element 55-155°F (Optional)



NOTE: Components with directional arrows must be installed as shown.

Repair Kits and Parts for Modulating Valves, Solenoid Valves and LP Gas Pressure Regulators

For Modulating Valves 123 7002 & 123 7024

122 9993 Seat Kit (Incl. stem, disc holder & diaphragm)

122 7006 Diaphragm

For 1 1/4" Solenoid Valve 128 7001

122 7034 Repair Kit (See note)

--- 4607 Coil

For 1/2" Solenoid Valve 125 7082

122 7039 Repair Kit (See note)

122 7001 Coil

NOTE: Kit includes all internal parts that would require replacement in normal service and installation instructions.

For LP Gas Pressure Regulator 128 7005

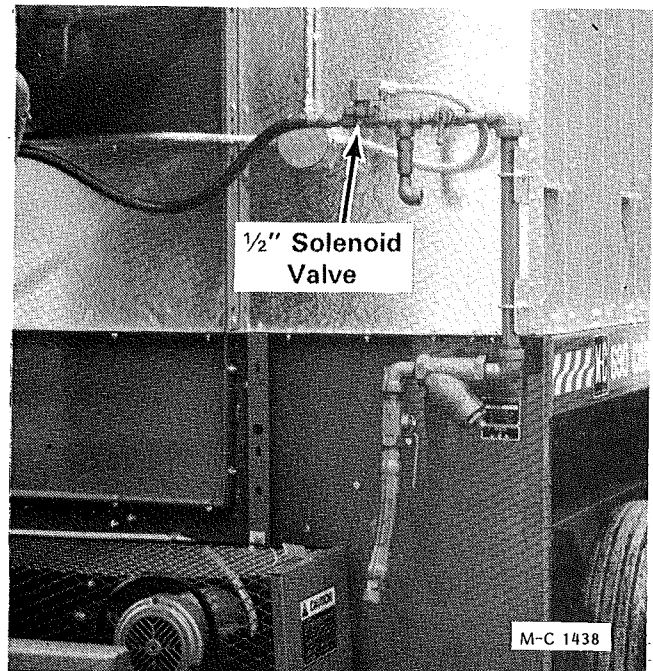
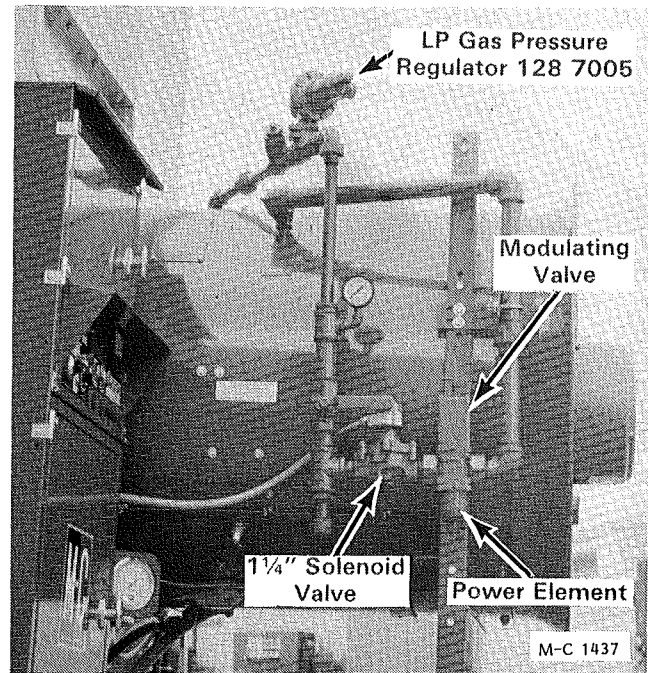
122 7043 Diaphragm (Nitrile)

122 7044 Disc Assembly

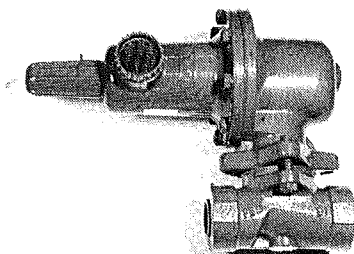
122 7045 Control Spring (Yellow)

122 7046 Stabilizer

122 7047 Diaphragm Case O Ring



Fisher LP Gas Pressure Regulators



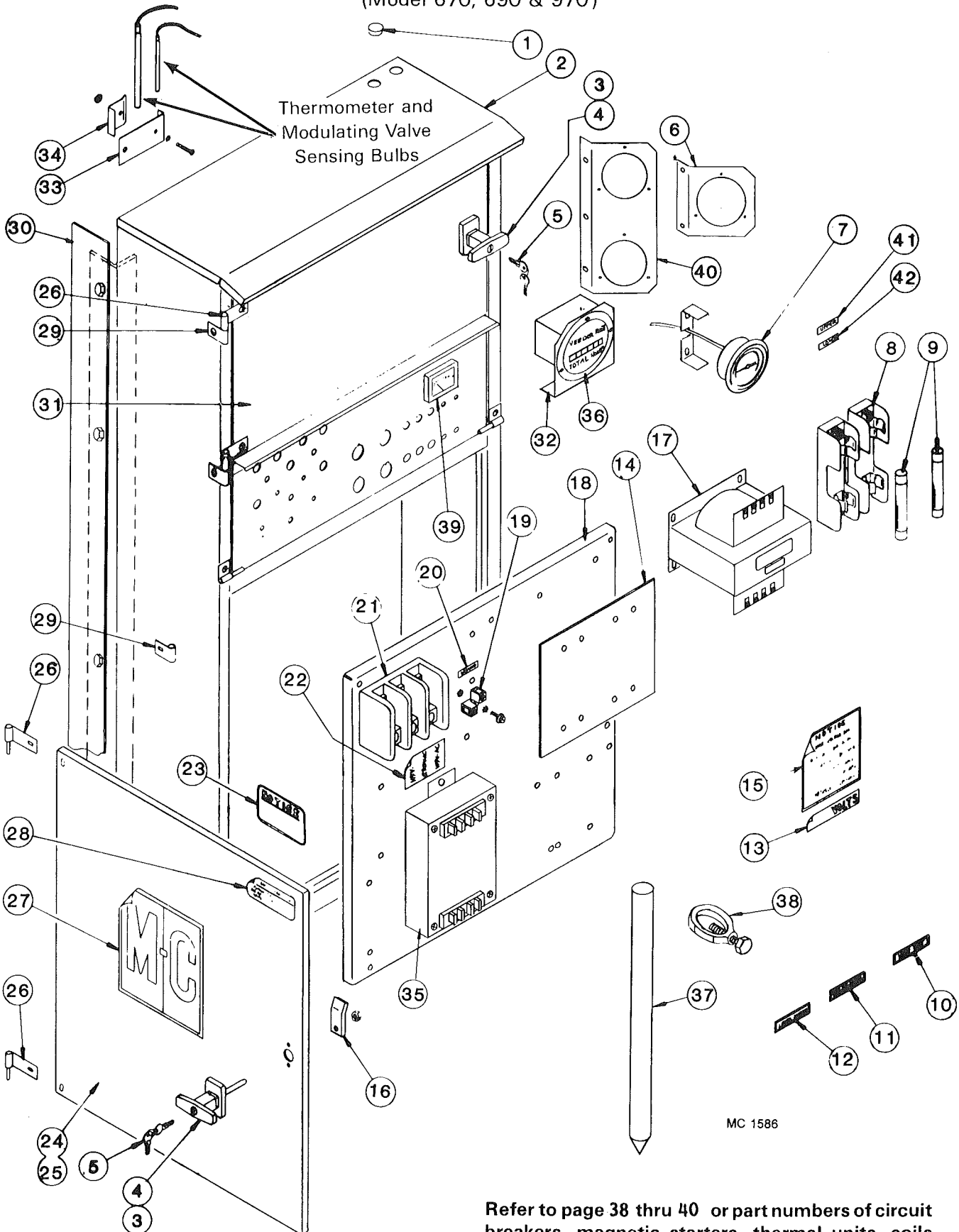
M-C 1216

128 7005

This page intentionally blank.

115V and Motor Control Cabinet

(Model 670, 690 & 970)

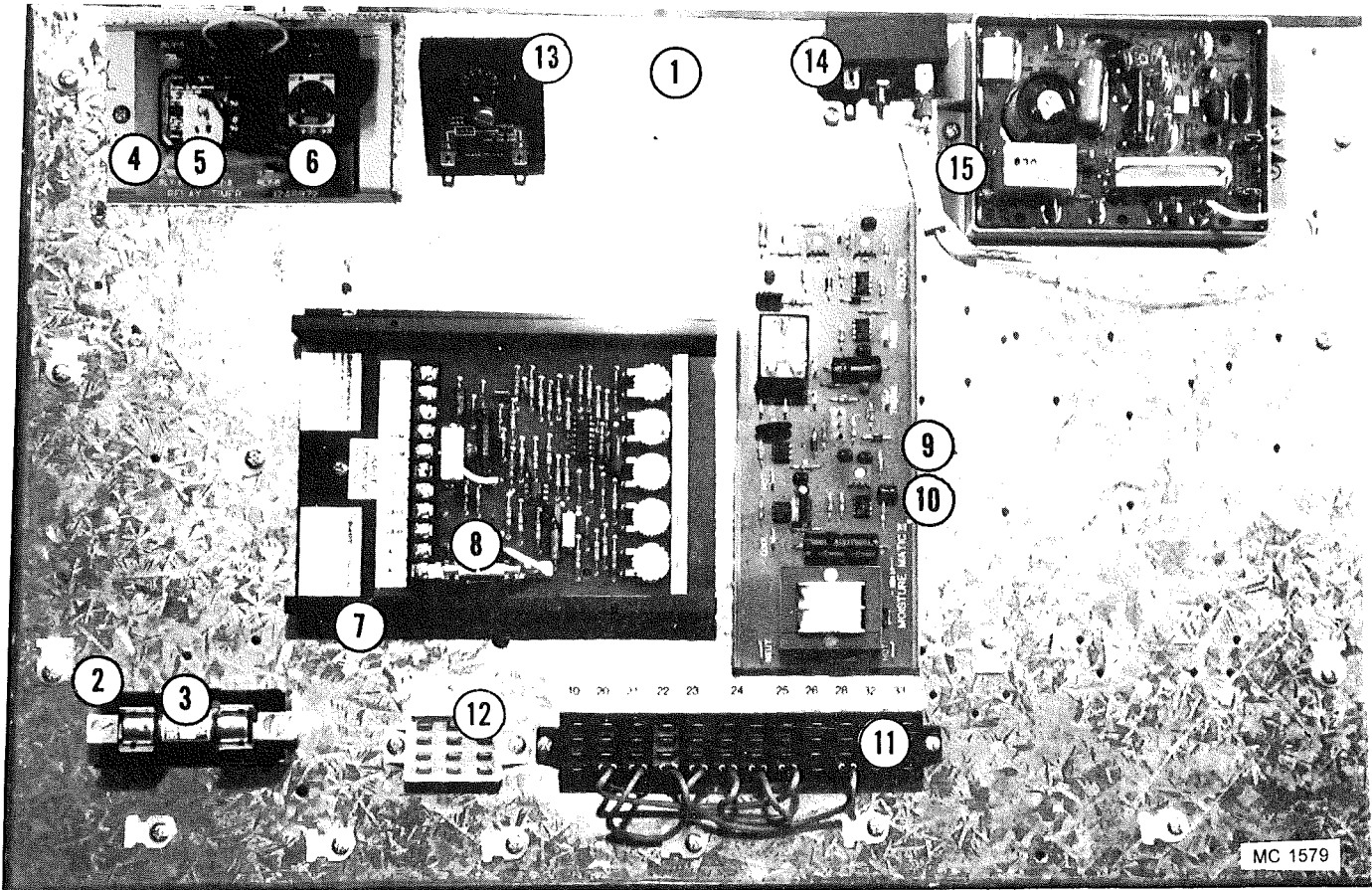


Refer to page 38 thru 40 or part numbers of circuit breakers, magnetic starters, thermal units, coils and interlocks.

115V AND MOTOR CONTROL CABINET (Model 670, 690 & 970)

<u>Ref.</u>	<u>Part No.</u>	<u>Qty.</u>	<u>Description</u>	<u>Ref.</u>	<u>Part No.</u>	<u>Qty.</u>	<u>Description</u>
1	121 8600	1	Hole Plug	18	124 4453	1	Component Mtg. Panel
2	128 0307	1	Control Cabinet Weld	19	125 6918	2	Grounding Lug
	128 8600	-	Weather Stripping - ¼" x ½" (Specify ft. reqd.)	20	128 8349	1	Ground Decal
3	124 1021	2	Door "T" Handle Ass'y (Incl. Ref. 5 keys, Ref. 16 cam and mtg. hdwe.) Lever type handle no longer available.	21	128 6957	1	Splitter Block-1 & 3 Phase
				22	128 8318	1	Splitter Block Voltage Decal
				23	001 8310	1	Machine Warranty Decal
4	128 8946	2	Door "T" Handle w/keys (Less Ref. 16 cam)	24	128 1930	1	Lower Door Ass'y (Incl. Ref. 3, 16 & 25 thru 28)
5	122 8900	2	Door "T" Handle Key	25	124 4816	1	Door - Lower
6	124 4824	1	Thermometer Mt. Plate - 690	26	021 0012	4	Door Hinge w/Pin
				27	001 8302	1	M-C Decal - 8-3/16" x 9"
7	128 8983	1	Thermometer - 15' Capillary (Mtg. brkt. incl.)	28	121 8316	1	Dryer Warning Decal
				29	121 4656	6	Door Hinge w/o Pin
8	121 6988	2	Fuse Holder (208V, 460V & 575V)	30	128 2676	2	Cabinet Extension
				31	128 0340	1	Control Cabinet Door - 690
9	124 6835	2	208V Fuse - FRN9		128 0318	1	Control Cabinet Door - 670/970
	124 6829	2	460V Fuse - FRS4	32	124 2855	1	Hour Meter Bracket
	127 6839	2	575V Fuse - FRS3.2	33	121 2883	-	Sensing Bulb Bracket
10	121 8313	1	Heat Fan Decal	34	121 2882	-	Sensing Bulb Clip
11	128 8335	1	Unload Auger Decal	35	124 6947	1	Motor Saver (20HP 1Ø only)
12	121 8351	1	Level Auger Decal	36	444 645	1	Hour Meter
13	123 8339	1	208 Volts Decal	37	124 6980	1	Grounding Rod - 8 ft. x 9/16" diameter
	123 8336	1	230 Volts Decal	38	124 6970	1	Grounding Rod Ring
	123 8335	1	460 Volts Decal	39	124 6981	1	Discharge Meter
	123 8338	1	575 Volts Decal	40	124 4815	1	Thermometer Mt. Plate (670 & 970)
14	128 5789	2	Insulator Sheet (460V & 575V)	41	121 8322	1	Thermometer "Upper" Decal
15	121 8315	1	Notice, Warranty Decal	42	121 8321	1	Thermometer "Lower" Decal
16	128 3425	2	Door Handle Cam				
17	127 6855	1	200/208V Transformer (750VA)				
	127 6827	1	230/460V Transformer (750VA)				
	127 6829	1	230/460/575V Trans- former (750VA)				

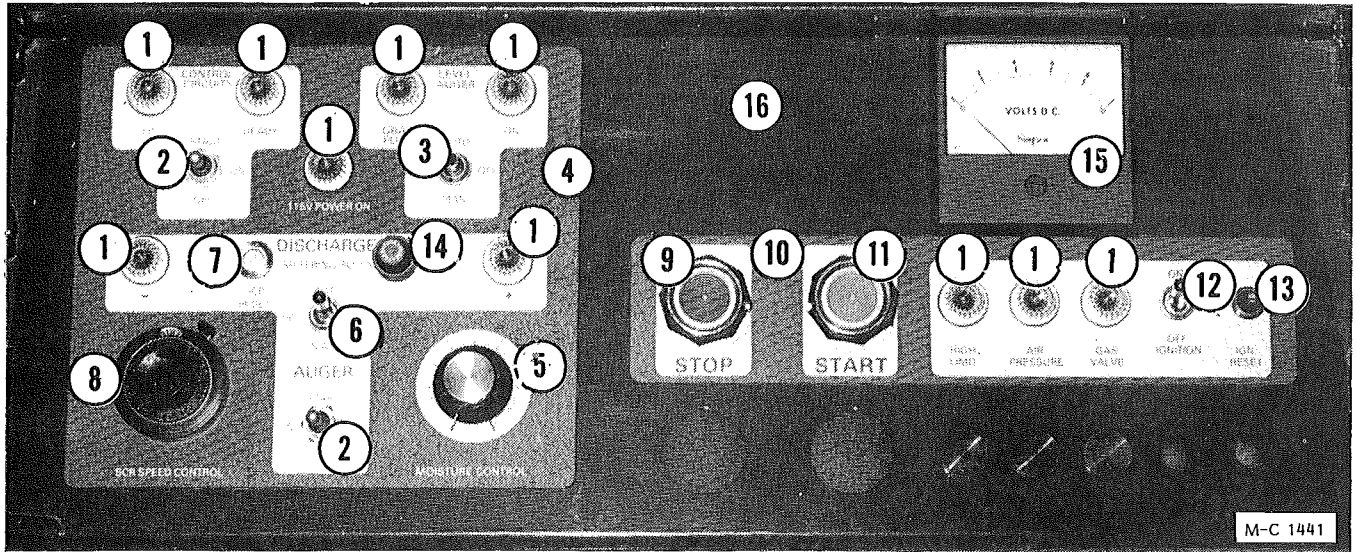
ELECTRICAL COMPONENTS IN 115V CONTROL CABINET



690 Shown

Ref.	Part No.	Qty.	Description
1	021 4770	1	Component Mounting Board
2	128 6851	1	Fuse Holder
3	128 6967	1	10 Amp Fuse (NON-10)
4	124 6972	1	Relay & Timer Socket Board starting with S/N 55242
5	021 6809	1	Relay
6	124 6978	1	60 Minute Adjustable Timer starting with S/N 55242
7	124 6874	1	SCR Board (Dart)
8	121 6805	1	10 Amp. - GLH Fuse
9	124 6957	1	Moisture-Matic III
10	128 5916	1	Snap Track 8 1/2"
11	124 6928	1	Terminal Block 12-Position
12	124 6929	1	Terminal Block 3-Position
13	124 6890	1	.1 to 8 Minute Adjustable Level Auger Timer
14	124 6831	1	10 Second Ignition Timer - 690
	124 6831	2	10 Second Ignition Timer - 670 & 970
15	121 6925	1	Ignition Board - 690
	121 6925	2	Ignition Board - 670 & 970

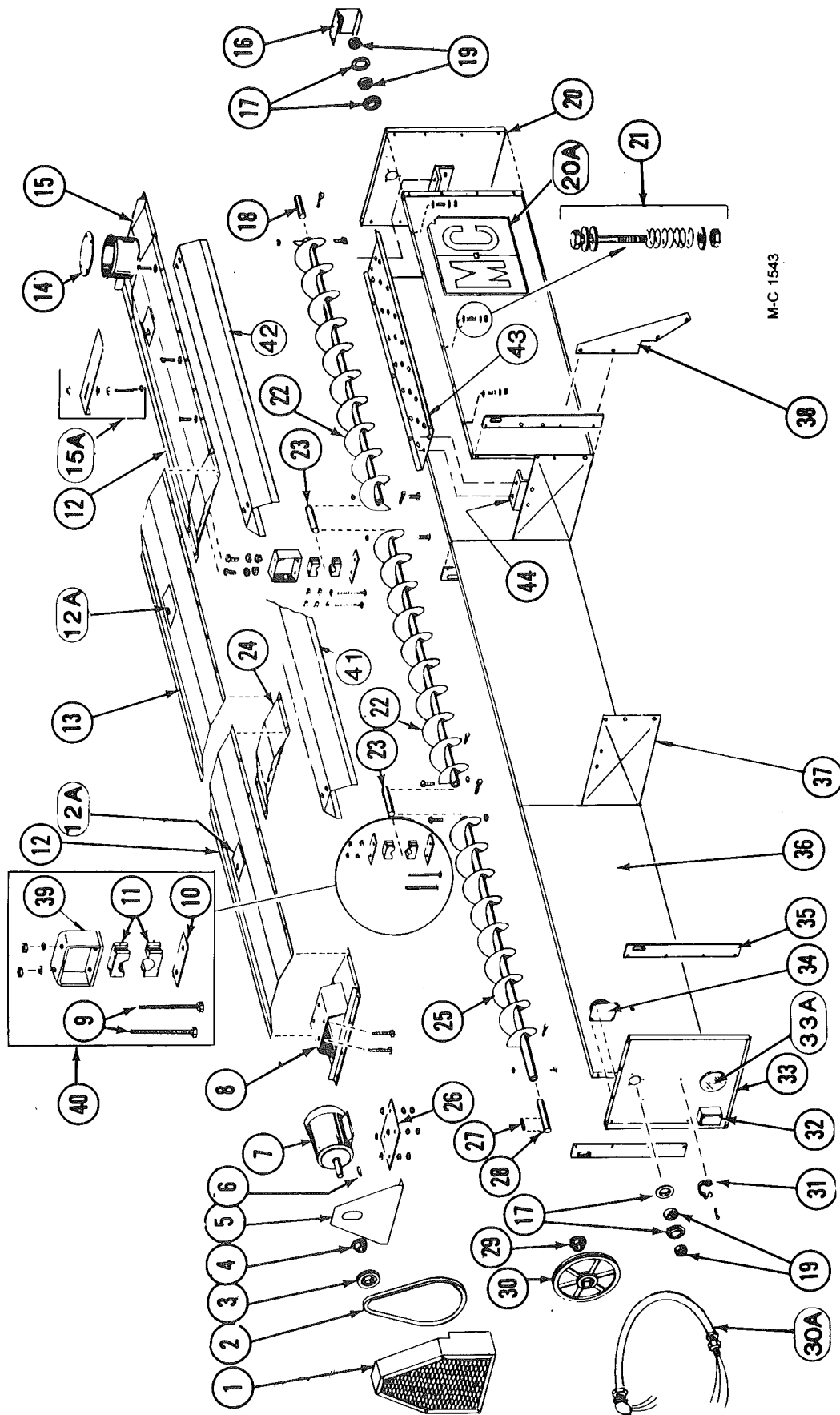
CONTROL PANEL LIGHTS, SWITCHES AND CONTROLS



690 Shown

Ref.	Part No.	Description
1	121 6808	125V Indicator Lamp Assembly (Inc. lamp & lens)
	122 6810	125V Indicator Lamp
	122 6800	Indicator Lamp Lens (Clear)
2	120 6827	OFF-ON-ON Momentary Contact Toggle Switch
3	121 6807	ON-OFF-ON Toggle Switch (DPDT)
4	128 8365	115V Control Bezel
5	124 6955	Moisture Control Potentiometer & Wires - 60"
	124 6941	Knob
6	121 6807	ON-OFF-ON Toggle Switch (DPDT)
7	124 6848	8 Amp Circuit Breaker (SCR Drive)
8	124 1195	SCR Drive Potentiometer (10 turn w/wires) - 42"
	124 6892	Multi-Dial
9	128 6845	Stop Button - Red
10	128 8358	Fan Control Bezel
11	128 6844	Start Button - Green
12	121 6815	ON-OFF Toggle Switch (SPST)
13	122 6814	Ignition Reset (0.1 Amp)
14	124 6938	Fuse Holder
	124 6937	1 Amp Fuse Slo-Blow
15	124 6981	Discharge Meter
16	128 0340	Control Cabinet Door - 690
	128 0318	Control Cabinet Door - 670 & 970

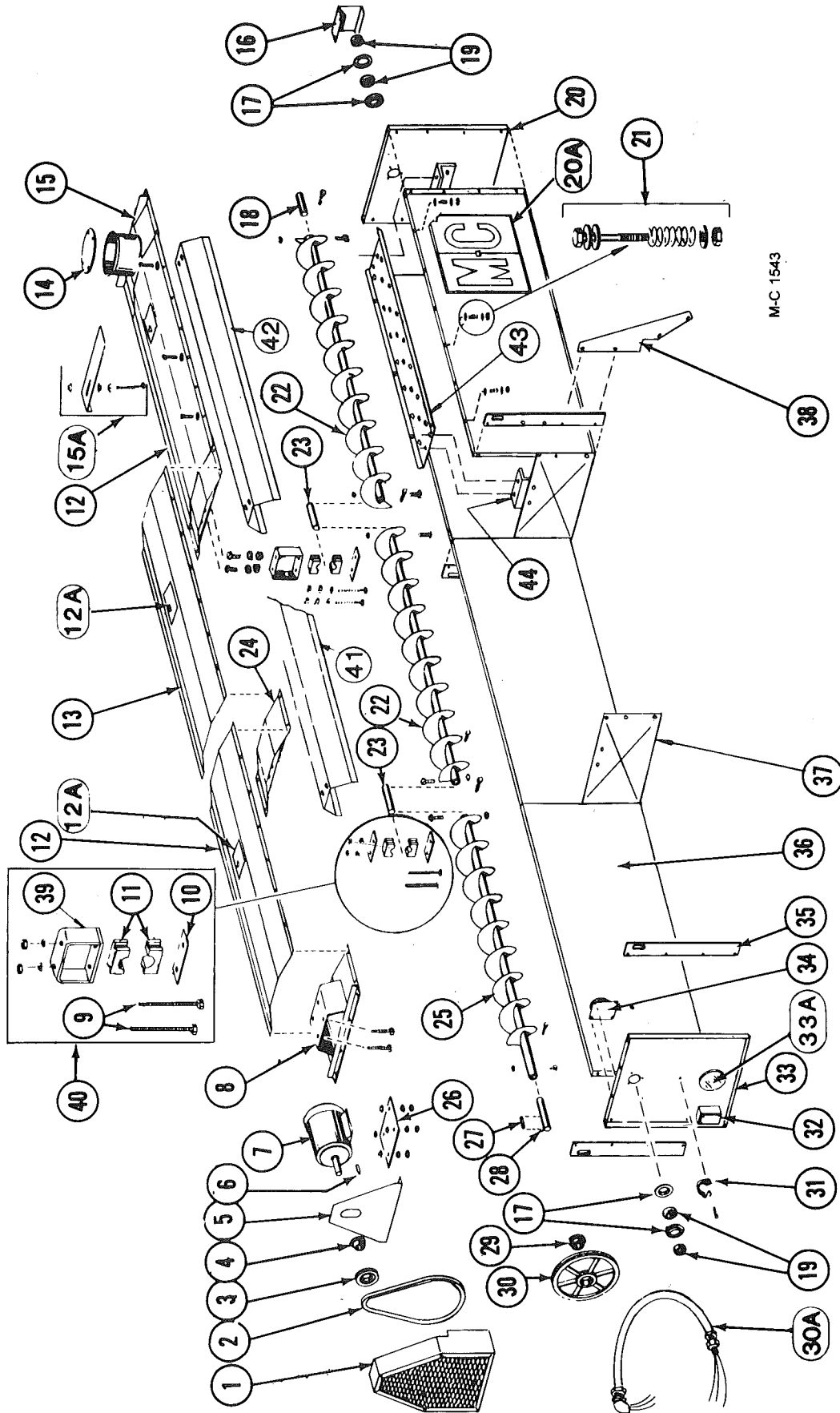
Hopper and Level Auger



Hopper and Level Auger

Ref.	Part No.	Qty (16') (24')	Description	Ref.	Part No.	Qty (16') (24')	Description
1	129 0003	1	Level Auger Guard	12	129 2945	2	Hopper Cover - Front & Rear (76")
2	128 6103	1	2/3V/710 (banded belt) or 128 6104 in matched set of two	12A	128 8355	2	Warning Decal
3	128 6207	1	3V/3.65 x 2 Groove	13	129 2946	-	Hopper Cover - Center (83")
4	128 6214	1	1 1/8" SH Bushing - for 3HP & 5HP motor (Incl. capscrews & lockwashers)	14	129 4204	1	Receiving Tube Cover
5	129 4944	1	Level Auger Guard Back	15	129 0002	1	Receiving Hopper
6	001 5112	1	Key - 3/16" x 1 3/8" (1.5HP motor)	15A	129 4205	1	Flow Restrictor
001 5114	1	Key - 3/16" x 1 5/8" (2HP motor)	129 5703	1	Position & Locking Bolt		
001 5119	-	Key - 1/4" x 2" (3HP motor)	000 8168	3	3/8"-16 Flanged Locknut		
128 6818	1	230/460V 3HP 3Ø Motor	16	129 4947	1	Stub Guard	
128 6815	-	230/460V 5HP 3Ø Motor	17	001 6004	4	Bearing Flangette 1 1/4"	
129 0001	1	Level Auger Motor Mount	18	128 5052	1	Level Auger Rear Shaft (1 1/4" x 8")	
001 8287	2	3/8"-16 x 3 3/4" Capscrew - Grade 5	19	001 6003	2	Bearing w/Lock Collar - 1 1/4"	
001 8139	2	3/8" Lockwasher	20	129 2834	1	Upper End Panel - Rear	
000 8162	8	3/8"-16 Hex Nut	20A	121 8343	2	M-C Decal (26 1/2" x 23")	
128 3415	2	Bearing Hanger Bar	21	000 8101	12	1/4"-20 x 2" Capscrew	
128 6021	1	Wood Bearing - 1 1/4" (2 halves)		131 8708	12	Spring (5/8" OD x 1 3/4")	
				000 8172	36	1/4" Flatwasher	
				000 8210	12	1/4"-20 Two-Way Locknut	

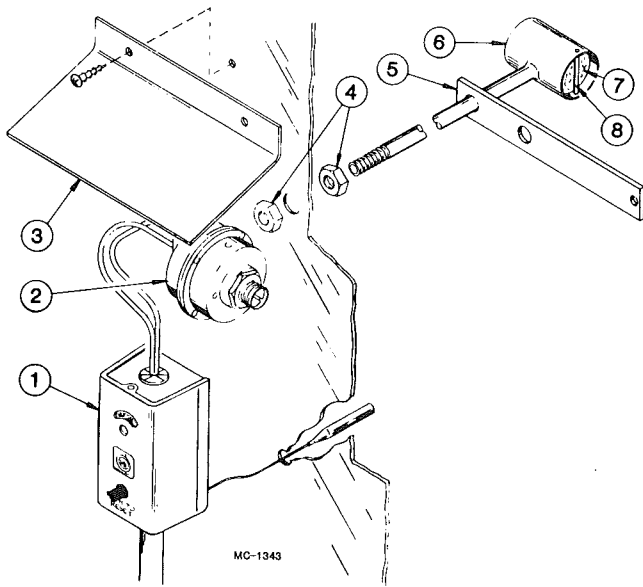
Hopper and Level Auger



Hopper and Level Auger

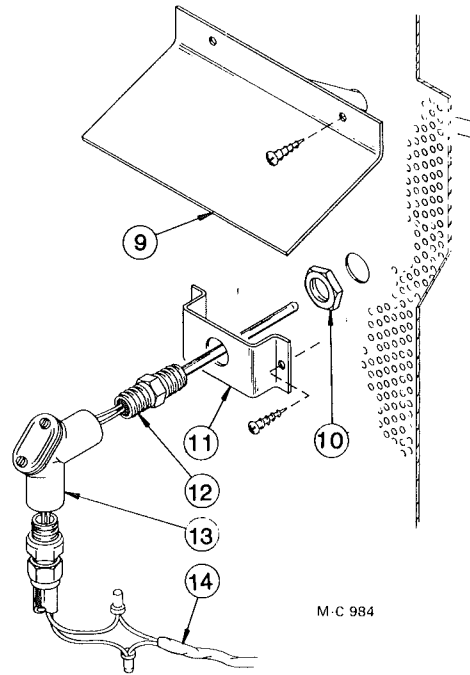
Ref.	Part No.	Qty (16') (24')	Description	Ref.	Part No.	Qty (16') (24')	Description	
22	128 0122	1	2	Level Auger (93 1/2" RH Flighting)	32	128 6922	1	Slatter Box (1/2")
23	128 5050	1	2	Level Auger Center Shaft (1 1/4" x 10 1/4")	33	129 2835	1	Upper End Panel - Front
24	129 0000	1	2	Level Auger Support	33A	129 5702	1	Port View Lens
25	128 0121	1	1	Level Auger (82 3/8" RH Flighting)	34	128 6992	1	Bin Level Indicator (See pg. 36)
	001 8137	8	12	3/8-16 x 2" Capscrew - Grade 5	35	129 3412	4	Lifting Bar
	001 8149	8	12	3/8-16 Two-Way Locknut	36	129 2836	4	Hopper Side
26	129 4202	1	1	Level Auger Motor Mount Plate	37	129 2715	1	Hopper Sectional Panel
	000 8161	4	4	1/2-13 x 3 1/2" Capscrew (Full Thread)	38	129 2603	6	Hopper Brace
	000 8170	4	4	1/2-13 Flanged Locknut	39	128 0292	1	Level Auger Bearing Support
	000 8163	8	8	1/2-13 Hex Nut		001 8209	2	3/8-16 x 1" Hex Washer Head Bolt - Grade 5
27	001 5120	1	1	Key-1/4" x 1 1/2"		001 8139	2	3/8" Lockwasher
28	128 5051	1	1	Level Auger Front Shaft (1 1/4" x 10")		000 8162	2	3/8-16 Hex Nut
29	121 6241	1	1	1 1/4" SK Bushing (Incl. capscrews & lockwashers)	40	122 1008	1	Level Auger Bearing Kit (Incl. ref. 10, 11, 39 & 40 in quantities reqd. for one bearing)
30	128 6208	1	1	3V/19.0 x 2 Groove	41	129 2839	-	Auger Cover Long
30A	128 1960	1	1	Flexible Conduit w/Wires	42	129 2838	1	Auger Cover Short (Rear)
31	128 8951	1	1	Rubber Strap w/Hook	43	128 2761	1	Pan Under Auger
					44	128 2760	2	Auger Pan Support Bracket

Moisture Control, Air Pressure and High Limit Switches



Air Pressure and High Limit Switches

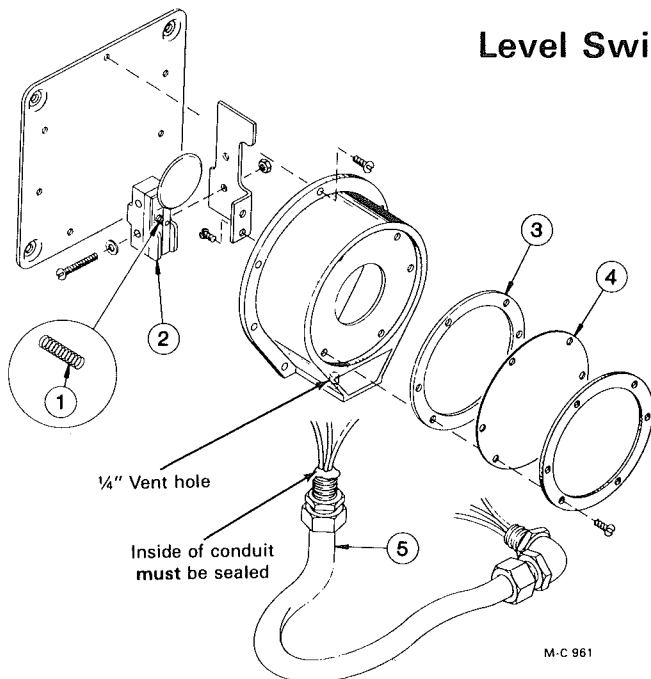
Ref.	Part No.	Description
1	124 6934	High Limit Switch - Adjustable-Manual Reset
2	121 6849	Air Pressure Switch
3	121 2946	High Limit Switch Cover
4	121 8000	Pipe Locknut - 1/4"
5	121 2007	Air Pressure Tube Brkt.
6	121 0169	Air Pressure Tube
7	121 5716	Air Pressure Tube Filter
8	-----	Filter Retainer (Wire)



Moisture Control Probe

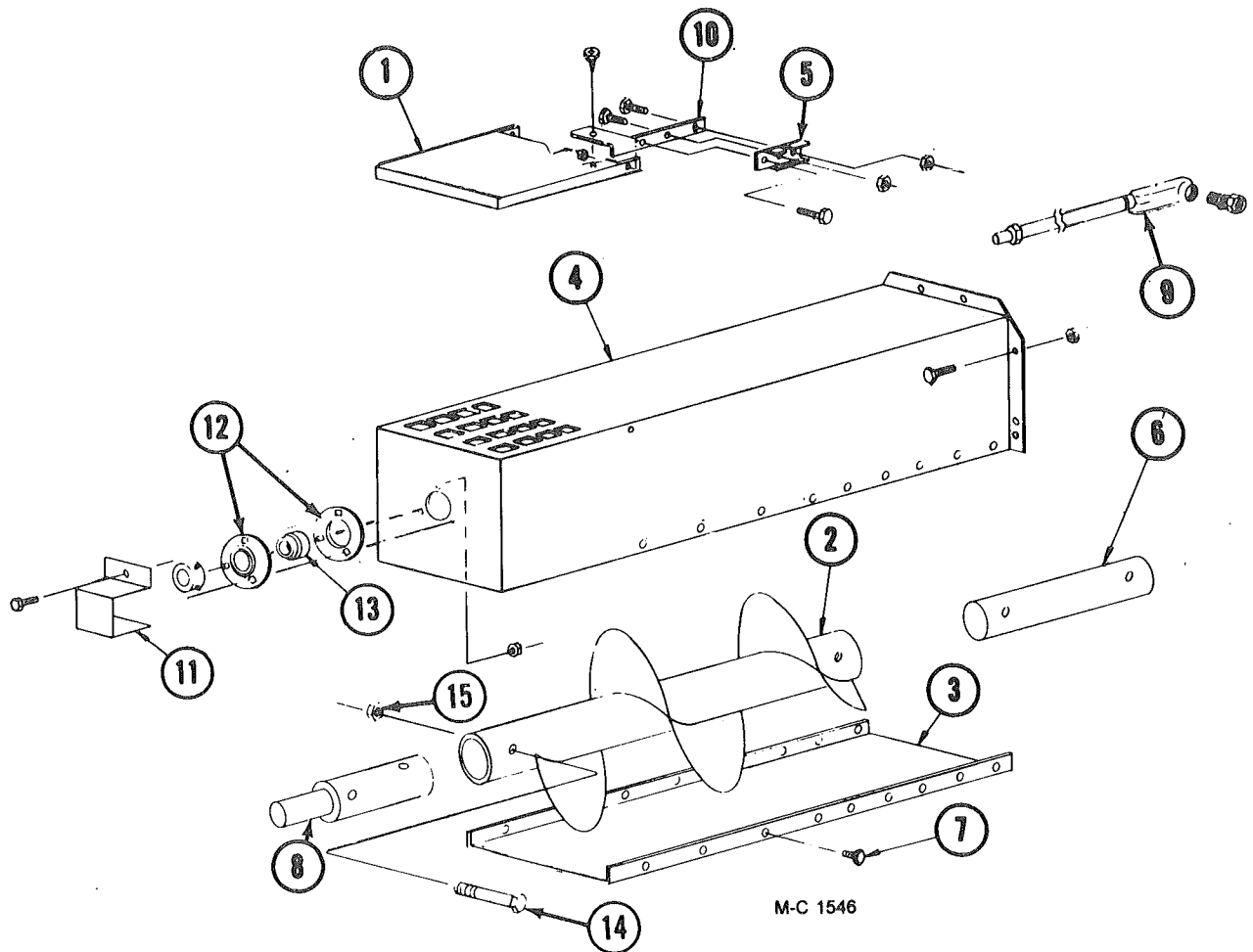
Ref.	Part No.	Description
9	121 0031	Moisture Control Shield
10	121 6915	Locknut - 1/2"
11	128 3007	Bracket
12	124 6893	Thermistor Sensor (Probe)
13	123 8089	1/2" Handy Ell
14	125 6908	18/2 PVC Cord w/Shield

Level Switch Assembly



Ref.	Part No.	Qty.	Description
—	128 6992	1	Bin Level Indicator (Less ref. 5)
1	122 6847	1	Spring
2	122 6848	1	Microswitch Ass'y.
3	122 6850	1	Gasket
4	122 6849	1	Diaphragm (Teflon)
5	128 1995	1	Level Switch Wire Ass'y.

**10" Unloading Auger Extension Kit (2') - 127 1229,
(4') - 127 1230, and (6') - 127 1233**



Ref.	Part No.	Qty.	Description
1	128 4712	1*	Over Load Door
2	128 0310	1	2' Extension Auger
	128 0312	1	4' Extension Auger
	128 0315	1	6' Extension Auger
3	124 4465	1	2' Bottom Cover
	124 4466	1	4' Bottom Cover
	124 4471	1	6' Bottom Cover
4	128 0311	1	2' Discharge Housing
	128 0313	1	4' Discharge Housing
	128 0314	1	6' Discharge Housing
5	120 6801	1*	Switch Mount Clip
6	128 5618	1*	Unload Auger Link

Ref.	Part No.	Qty.	Description
7	001 8284	-	5/16-12 x 1/2" Tapping Bolt (Qty. - 8, 16 or 24)
8	124 5611	1*	U.A. Output Shaft
9	127 1231	1	2' Extension Liqueatite Assy.
	127 1232	1	4' Extension Liqueatite Assy.
	127 1234	1	6' Extension Liqueatite Assy.
10	128 2937	1*	Bulb Mount
11	128 3011	1*	Stub Shaft Guard
12	001 6004	2*	1 1/4" Bearing Flangettes
13	001 6003	1*	1 1/4" Bearing w/Collar
14	000 8229	4	3/8"-16 x 2 3/4" HHCS Gr.5 ZP
15	000 8205	4	3/8"-16 Flanged Locknut

*Not included in kit when field installed.

DRYER MOTORS, CIRCUIT BREAKERS AND MAGNETIC STARTERS

MOTOR			CIRCUIT BREAKER			MAGNETIC STARTER			
HP	*FLA	Part No.	Part No.	Amps	Square "D" No.	Starter Part No.	Square "D" No.	Thermal Unit Part No.	Thermal Unit Size

200/208V - 3 PHASE - 60 HZ

□1.5	5.98	127 6833	128 6882	15	QOU 315	124 6931	DPS033	128 6947	B 9.10
‡1.5	5.98	127 6861	128 6882	15	QOU 315	124 6931	DPS033	128 6947	B 9.10
2	7.82	127 6841	128 6882	15	QUO 315	124 6931	DPS033	128 6863	B 11.5
3	11.0	127 6832	124 6875	20	QOU 320	124 6931	DPS033	128 6823	B 17.5
5	17.5	127 6843	124 6876	35	QOU 335	124 6931	DPS033	120 6857	B 32
7.5	25.3	127 6858	124 6904	50	QOU 350	124 6930	DPS053	128 6979	B 40
10	32.2	203 6809	125 6912	60	QOU 360	124 6930	DPS053	128 6950	B 50
15	48.3	126 6854	128 6885	90	QOU 390	124 6930	DPS053	128 6953	B 79
20	62.1	127 6853	128 6966	100	QOU 3100	124 1082	DPA73	128 6827	CC 87.7
25	67.0	127 6852	128 6887	110	Q2L 3110	124 1082	DPA73	120 6844	CC 103
30	80.0	127 6859	124 6906	125	Q2L 3125	124 1083	DPA93	128 6954	CC 132

230V - 1 PHASE - 60 HZ

□1.5	8.3	121 6846	128 6878	20	QOU 220	124 6931	DPS033	128 6863	B 11.5
‡1.5	10.6	127 6863	128 6878	20	QOU 220	124 6931	DPS033	120 6850	B 15.5
2	12.3	121 6862	124 6903	25	QOU 225	124 6931	DPS033	128 6949	B 19.5
3	20.0	128 6829	124 6909	40	QOU 240	124 6931	DPS033	120 6857	B 32
5	28.0	201 6815	128 6880	60	QOU 260	124 6930	DPS053	128 6979	B 40
†7.5	38.5	124 6816	124 6908	80	QOU 280	124 6930	DPS053	124 6910	B 66
†7.5	38.5	124 6888	124 6908	80	QOU 280	124 6930	DPS053	124 6910	B 66
10	45.0	124 6818	128 6881	90	QOU 290	124 6930	DPS053	128 6953	B 79
20	92.0	124 6879	124 6881	125	Q2L 2125	124 1083	DPA93	128 6820	CC 156

230V - 3 PHASE - 60 HZ

□1.5	5.0	121 6845	128 6882	15	QOU 315	124 6931	DPS033	120 6851	B 7.70
‡1.5	5.0	127 6860	128 6882	15	QOU 315	124 6931	DPS033	120 6851	B 7.70
2	6.0	121 6861	128 6882	15	QOU 315	124 6931	DPS033	128 6947	B 9.10
3	9.0	128 6818	128 6882	15	QOU 315	124 6931	DPS033	125 6931	B 14.0
5	13.8	128 6815	124 6907	25	QOU 325	124 6931	DPS033	120 6855	B 25
7.5	20.6	121 6948	128 6968	40	QOU 340	124 6931	DPS033	128 6946	B 36
10	27.2	201 6818	125 6912	60	QOU 360	124 6930	DPS053	120 6853	B 45
15	39.2	201 6819	128 6891	80	QOU 380	124 6930	DPS053	128 6978	B 70
20	49.6	125 6934	128 6885	90	QOU 390	124 1082	DPA73	128 6972	CC 74.6
25	61.0	201 6842	128 6966	100	QOU 3100	124 1082	DPA73	128 6827	CC 87.7
30	73.0	128 6986	128 6887	110	QL2 3110	124 1083	DPA93	128 6820	CC 156

* If FLA (Full Load Amps) shown does not match FLA imprinted on motor name plate, refer to Square D charts for correct thermal unit size.

□ - 5/8" shaft

‡ - 7/8" shaft

† - 124 6816 has 1 1/8" shaft. 124 6888 has 1 1/8" shaft.

DRYER MOTORS, CIRCUIT BREAKERS AND MAGNETIC STARTERS

MOTOR			CIRCUIT BREAKER			MAGNETIC STARTER			
HP	*FLA	Part No.	Part No.	Amps	Square "D" No.	Starter Part No.	Square "D" No.	Thermal Unit Part No.	Thermal Unit Size

380V - 3 PHASE - 50 HZ

1.5	2.9	127 6860	128 6931	15	FAL 36015	124 6931	DPS033	128 6951	B 6.25
** 1.5	2.9	123 6876	128 6931	15	FAL 36015	124 6931	DPS033	128 6951	B 6.25
2	3.7	121 6861	128 6931	15	FAL 36015	124 6931	DPS033	120 6845	B 6.90
** 2	3.7	124 6867	128 6931	15	FAL 36015	124 6931	DPS033	120 6845	B 6.90
3	5.2	128 6818	128 6931	15	FAL 36015	124 6931	DPS033	128 6947	B 9.10
15	23.0	201 6819	128 6937	60	FAL 36060	124 6930	DPS053	120 6853	B 45
20	30.5	125 6842	124 6905	70	FAL 36070	124 6930	DPS053	128 6950	B 50
25	35.9	128 6986	125 6929	80	FAL 36080	124 6930	DPS053	128 6983	B 56

460V - 3 PHASE - 60 HZ

□ 1.5	2.5	121 6845	128 6931	15	FAL 36015	124 6931	DPS033	128 6984	B 3.00
‡ 1.5	2.5	127 6860	128 6931	15	FAL 36015	124 6931	DPS033	128 6984	B 3.00
2	3.0	121 6861	128 6931	15	FAL 36015	124 6931	DPS033	128 6948	B 4.15
3	4.5	128 6818	128 6931	15	FAL 36015	124 6931	DPS033	120 6845	B 6.9
5	6.9	128 6815	128 6931	15	FAL 36015	124 6931	DPS033	128 6952	B 10.2
7.5	10.3	121 6948	128 6933	20	FAL 36020	124 6931	DPS033	128 6823	B 17.5
10	13.6	201 6818	125 6928	30	FAL 36030	124 6931	DPS033	120 6855	B 25.0
15	19.6	201 6819	128 6930	40	FAL 36040	124 6930	DPS053	128 6946	B 36
20	24.8	125 6934	128 6937	60	FAL 36060	124 6930	DPS053	120 6853	B 45
25	31	201 6842	124 6905	70	FAL 36070	124 6930	DPS053	128 6983	B 56
30	37	128 6986	125 6929	80	FAL 36080	124 6930	DPS053	128 6978	B 70

575V - 3 PHASE - 60 HZ

□ 1.5	2	127 6815	128 6931	15	FAL 36015	124 6931	DPS033	128 6984	B 3.00
‡ 1.5	2	127 6862	128 6931	15	FAL 36015	124 6931	DPS033	128 6984	B 3.00
2	2.4	127 6816	128 6931	15	FAL 36015	124 6931	DPS033	120 6848	B 3.70
3	3.6	127 6814	128 6931	15	FAL 36015	124 6931	DPS033	120 6829	B 5.50
5	5.5	127 6847	128 6931	15	FAL 36015	124 6931	DPS033	128 6985	B 8.20
7.5	8.2	127 6828	128 6931	15	FAL 36015	124 6931	DPS033	128 6863	B 11.5
10	10.8	127 6857	128 6933	20	FAL 36020	124 6931	DPS033	128 6823	B 17.5
15	15.6	127 6845	125 6928	30	FAL 36030	124 6931	DPS033	128 6971	B 28
20	19.8	127 6844	128 6930	40	FAL 36040	124 6931	DPS033	128 6946	B 36
25	25	127 6846	128 6937	60	FAL 36060	124 6930	DPS053	120 6853	B 45
30	30	124 6902	128 6937	60	FAL 36060	124 6930	DPS053	128 6983	B 56

*If FLA (Full Load Amps) shown does not match FLA imprinted on motor name plate, refer to Square D charts for correct thermal unit size.

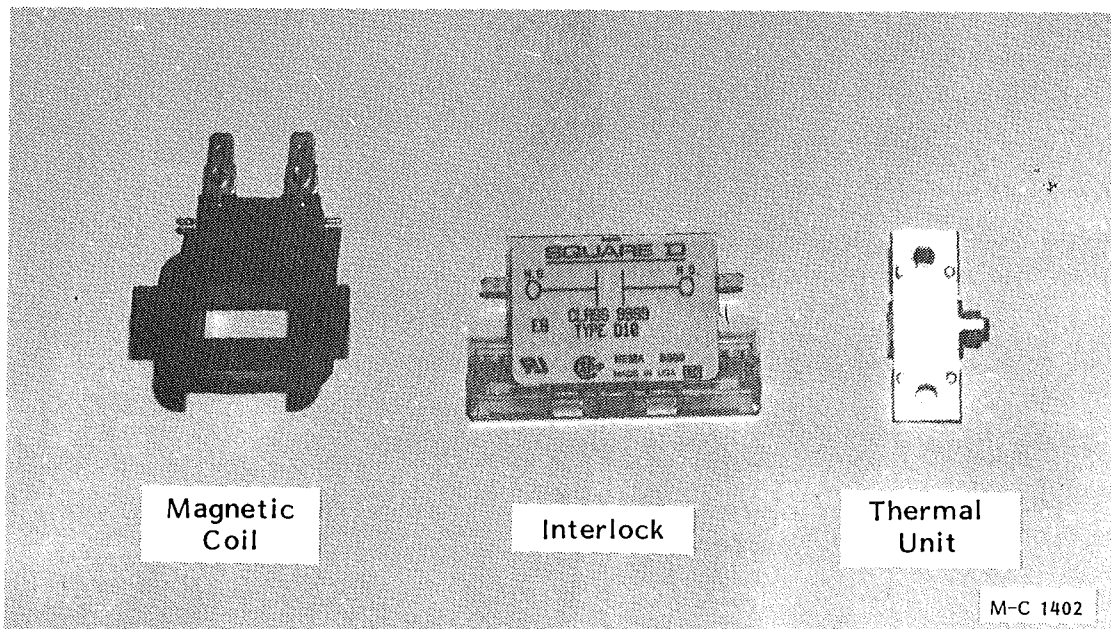
- ** - "C" Face
- - 5/8" shaft
- ‡ - 7/8" shaft

115V COILS AND INTERLOCKS

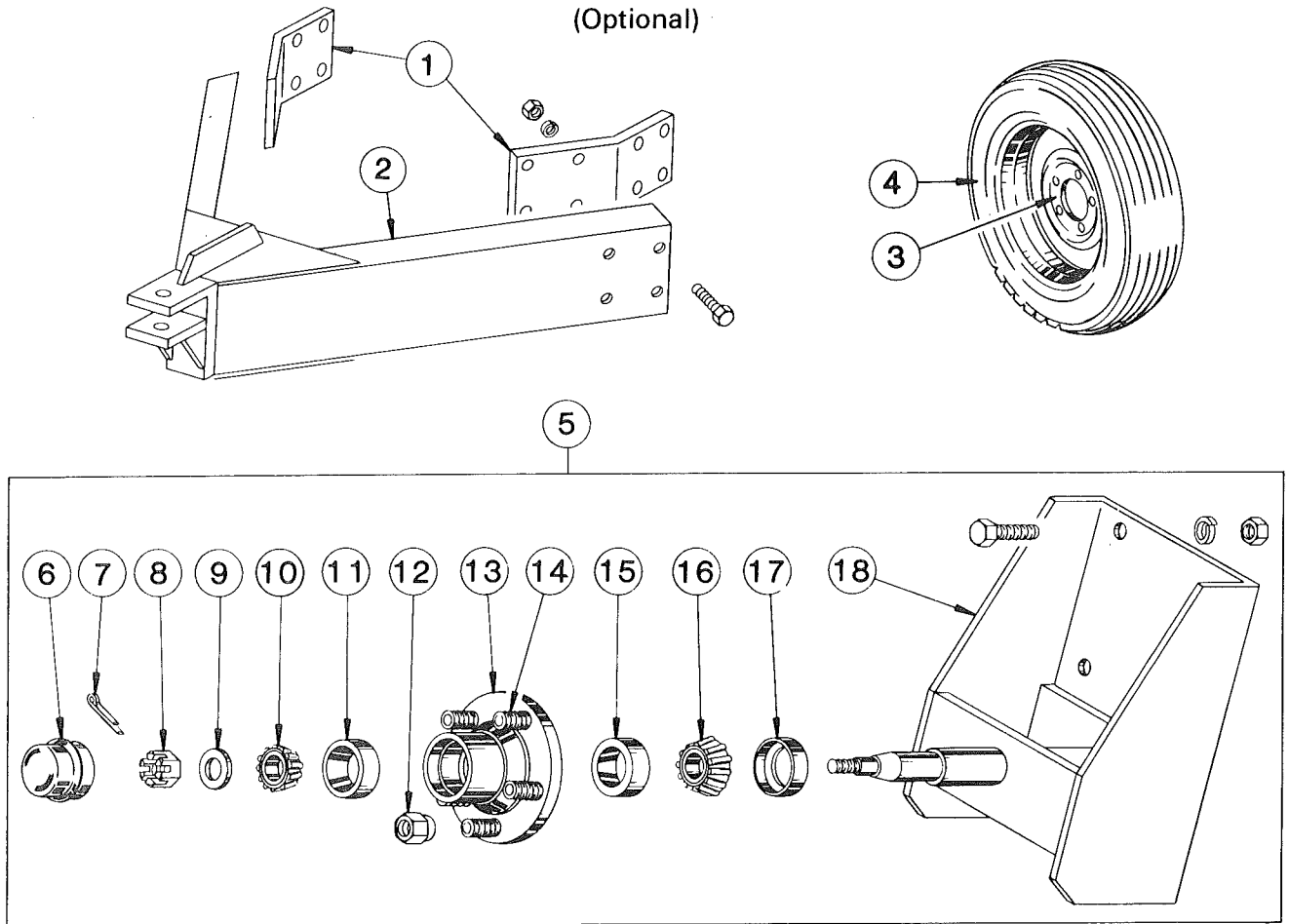
STARTER		COIL		INTERLOCK	
SQUARE "D" NO.	M-C NO.	M-C NO.	SQUARE "D" NO.	M-C NO.	SQUARE "D" NO.
DPA73	124 1082	122 6861	9998-DA3V02	124 6933	9999-D-20
DPA93	124 1083	122 6861	9998-DA3V02	124 6933	9999-D-20
DPS053 (50) HZ	124 6930	122 6860	9998-DA1V02	124 6933	9999-D-20
DPS033 (50) HZ	124 6931	122 6860	9998-DA1V02	124 6933	9999-D-20
DPS033 (60) HZ	124 6931	122 6860	9998-DA1V02	124 6933	9999-D-20
DPS053 (60) HZ	124 6930	122 6860	9998-DA1V02	124 6933	9999-D-20

JUMPER STRAP KITS AND CONTACT KITS

STARTER		JUMPER STRAP KIT (2 STRAPS PER KIT)		CONTACT KIT	
SQUARE "D" NO.	M-C NO.	M-C NO.	SQUARE "D" NO.	M-C NO.	SQUARE "D" NO.
DPA73	124 1082	124 6885	9998-S032	122 6863	9998-DRC7
DPA93	124 1083	124 6885	9998-S032	122 6864	9998-DRC9
DPS033 (50) HZ	124 6931	120 6841	9998-S031		
DPS053 (50) HZ	124 6930	120 6841	9998-S031	122 6862	9998-DRC5
DPS033 (60) HZ	124 6931	120 6841	9998-S031		
DPS053 (60) HZ	124 6930	120 6841	9998-S031	122 6862	9998-DRC5



Portabilities (Optional)



M-C 980

120 1030 - 4 Wheel Portabilities (Incl. ref. 1 & 2 and four of ref. 3 & 5 - less tires)

120 1031 - 6 Wheel Portabilities (Incl. ref. 1 & 2 and six of ref. 3 & 5 - less tires)

120 1043 - 8 Wheel Portabilities (Incl. ref. 1 & 2 and eight of ref. 3 & 5 - less tires)

120 1040 - Additional Portabilities (Incl. two of ref. 3 & 5 - less tires)

Ref.	Part No.	Qty.	Description	Ref.	Part No.	Qty.	Description
1	128 3671	2	Pole Mount Brkt.	6	001 8996	1	Hub Cap
	128 8196	8	3/4 - 10 x 2 1/2" Capscrew - Grd. 5	7	001 8252	1	Cotter Pin - 1/8" x 1"
	000 8182	8	3/4" Lockwasher	8	001 8253	1	Spindle Nut
	000 8165	8	3/4 - 10 Hex Nut	9	001 8254	1	Spindle Washer
2	120 0047	1	Dryer Pole	10	001 6000	1	Bearing Cone - Outer
	128 8195	8	3/4 - 10 x 2" Capscrew - Grd. 5	11	002 6000	1	Bearing Cup - Outer
	000 8182	8	3/4" Lockwasher	12	001 8989	5	1/2 - 20 Lug Nut - 45°
	000 8165	8	3/4 - 10 Hex Nut	13	001 8992	1	Wheel Hub Ass'y. - 5 Bolt (Incl. ref. 11, 14 & 15)
3	001 8993	1	5 Bolt Wheel - 15"	14	002 8152	5	1/2 - 20 x 1 1/2" Stud
4	127 8990	1	7.60 x 15 - 6 Ply Tubeless Tire	15	002 6001	1	Bearing Cup - Inner
5	120 1028	1	Wheel Spindle & Hub Ass'y. (Inc ref. 6 thru 18)	16	001 6001	1	Bearing Cone - Inner
	000 8146	6	5/8 - 11 x 1 1/2" Capscrew - Grd. 5	17	001 8991	1	Seal
	000 8181	6	5/8" Lockwasher	18	120 0031	1	Wheel Mount
	000 8164	6	5/8 - 11 Hex Nut				

WALKWAY (Optional)

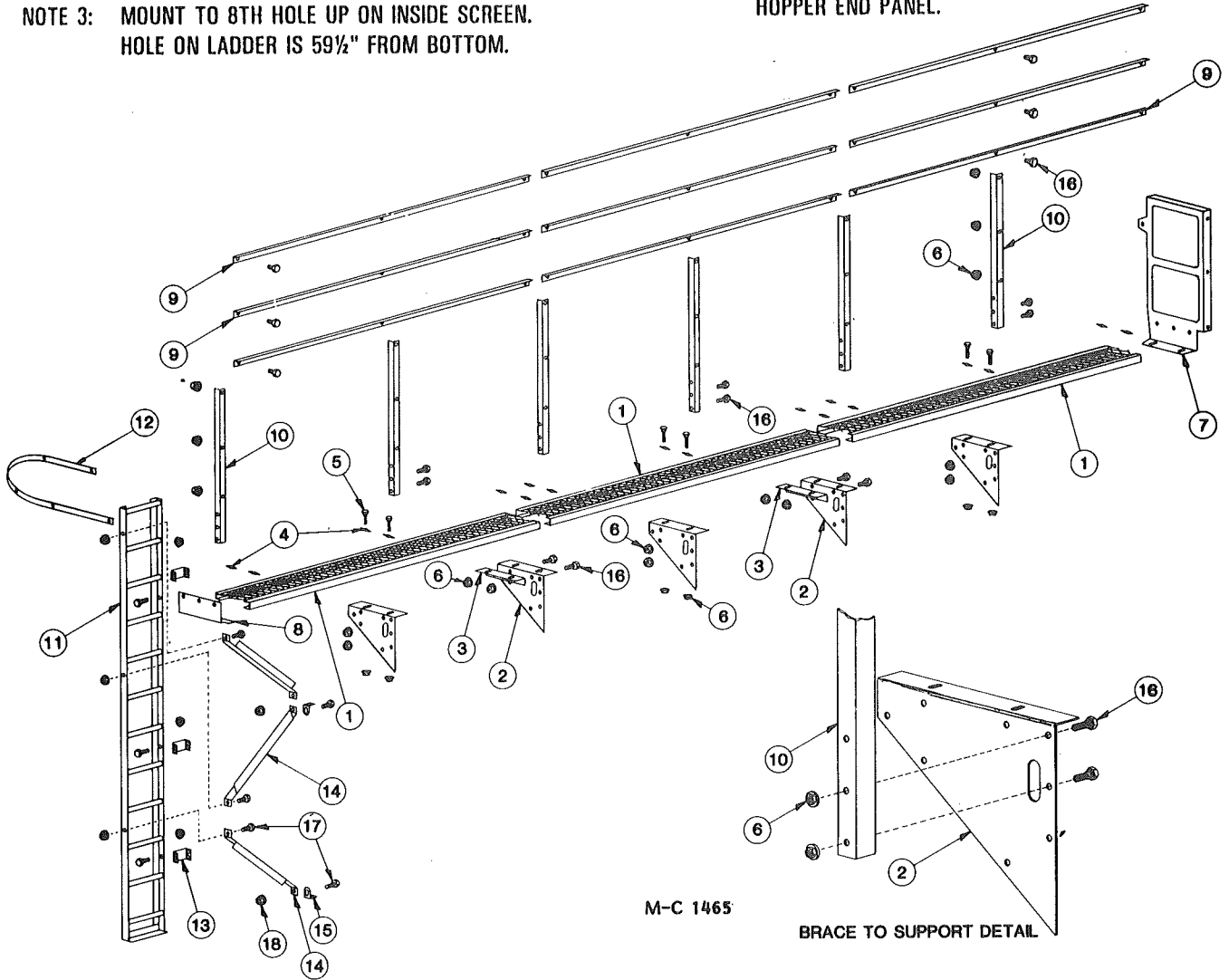
NOTE 1: USE 2 LOWER MTG. HOLES ONLY ON ITEM(S) #10.

NOTE 2: MOUNT TO 2ND HOLE UP ON INSIDE SCREEN.
HOLE ON LADDER IS 24" FROM BOTTOM.

NOTE 3: MOUNT TO 8TH HOLE UP ON INSIDE SCREEN.
HOLE ON LADDER IS 59½" FROM BOTTOM.

NOTE 4: MOUNT BRACKET THRU SAME HOLE AS
REF. #8 IS MOUNTED.

NOTE 5: MOUNT REF. #12 FROM TOP OF LADDER
(OUTERMOST EDGE) TO 3RD HOLE UP ON
HOPPER END PANEL.

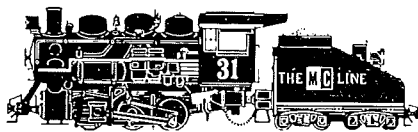
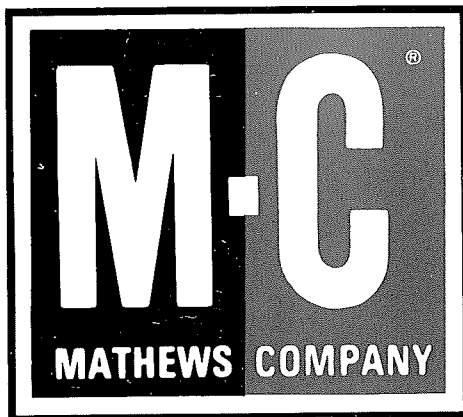


M-C 1465

BRACE TO SUPPORT DETAIL

Ref. Part No.	(16')	(24')	Description
1	128 5712	1	Walkway Grating - 95¼"
	129 8700	2	Walkway Grating - 95¾"
2	129 2600	3	Bridge Support
3	129 2602	1	Walkway Grating Support
4	120 8994	12	Walkway Grating Anchor Clip
5	001 8276	12	5/16-18x3" Carriage Bolt
6	000 8169	142	5/16 Flanged Whiz Locknut
7	128 2758	1	Walkway End Guard 24 x 47½"
8	124 2601	1	Walkway End Support

Ref. Part No.	(16')	(24')	Description
9	129 2004	6	Standard Guard Rail
10	129 2015	4	Guard Rail Brace
11	120 0045	1	Ladder - 11½'
12	128 2031	1	Ladder Cage Hoop - 54"
13	128 2660	3	Ladder Mounting Bracket
14	128 2661	3	Ladder Mounting Angle
15	001 3302	3	Angle Clip
16	001 8202	130	5/16-18x¾" Hex Washer Head Bolt - Grd. 5
17	001 8209	12	3/8-16 x 1" Hex Washer Head Bolt - Grd. 5
18	000 8168	12	3/8-16 Flanged Locknut



Iron Horse Quality