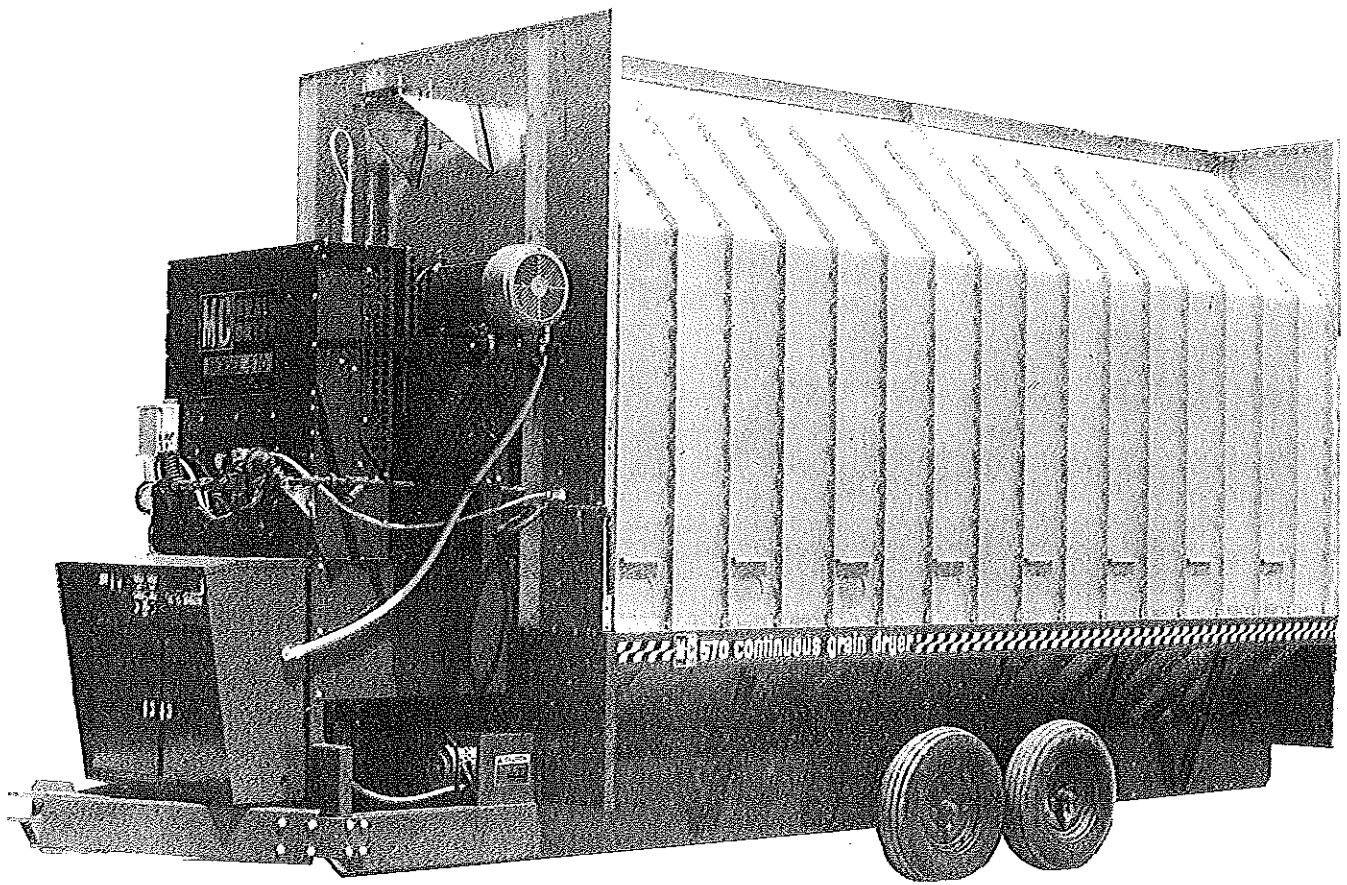


\$5.00



**Model 370C & 570C  
Continuous Flow  
Grain Dryers**  
(Starting w/Serial No. 55705)



Model 570 C

# PARTS CATALOG

Form No. D 326 April 1997

**Mathews Company** / 500 Industrial Ave., Crystal Lake, IL 60012, U.S.A.  
815/459-2210 FAX 815/459-5889

# CONTENTS

	Page
<b>Introduction</b>	
Parts Ordering Instructions	1
Model and Serial Number Location	1
Capscrew Grade Identification	1
<b>Parts</b>	
Air Pressure Switch	34
Augers	30-32
Level	2-7
Unload	
Belts	24
Fan	30-32
Level Auger	14
Unload Auger	34
Bin Level Indicator	16
Burner	
Cabinet	22
115V Control Cabinet	35
Circuit Breakers - Level Auger, Unload Auger & Fan Motor	
Coils	36
Magnetic Starter - 115V	19
1 ¼" Solenoid Valve	18
½" Solenoid Valve	36
Contacts - For Magnetic Starters	21
Control Panel Lights, Switches and Controls	22
Motor Control Cabinet	
Decal Kit - All Models	13
Electrical Components in 115V Control Cabinet	20
Electrode	16
End Panels - 370 & 570	12
Fan	24
Fan Housing	26-27
Fan Motor	24
Fan Motor Mount	24
Flame Sensing Probe	16
Floor Panels - 370 & 570	12
Guards	15
Fan	30-32
Level Auger Motor	15
SCR Drive	

Continued on next page

	Page
High Limit Switch .....	34
Hoppers	
370 Standard .....	28
370 Fold-Down Extension .....	29
570 Standard .....	30
570 Short .....	32
Ignition Board .....	20
Ignition Wires .....	16
Interlocks - For Magnetic Starters .....	36
Jumper Straps - For Magnetic Starters .....	36
Level Auger	
Belts .....	30-32
Motor .....	30-32
Motor Mount .....	30-32
Switch Assembly .....	34
Lights, Control Panel .....	21
LP Gas Liquid Line Piping .....	18
LP Gas Manifold and Piping .....	19
Magnetic Starters .....	35
Manifolds - LP & Natural Gas .....	19
Metering Rolls .....	2-7
370 .....	2-3
570 .....	4-7
Mixing Chambers .....	37
Modulating Valves .....	19
Modulating Valve Power Elements .....	19
Moisture Control	
Moisture-Matic III .....	20
Potentiometer .....	21
Thermistor Sensor .....	34
Natural Gas Manifold and Piping .....	19
Portabilities .....	38
Pressure Gauge (Gas) .....	19
Pressure Regulator (LP Gas) .....	19

Continued on next page

	Page
Relay .....	20
Relief Valve - LP Gas .....	18
SCR Drive Unload System .....	20
Control Board .....	14
Motor and Gear Box .....	21
Potentiometer .....	21
Screens .....	9
Base Screens .....	10
Upper Screens .....	10
Solenoid Valves .....	19
1 1/4" - LP & Natural Gas .....	18
1/2" - LP Gas .....	21
Switches, Control Panel .....	21
Terminal Tracks .....	20
Thermistor .....	34
Thermometer .....	27
Timers .....	20
10 Second - Ignition .....	20
.1 to 8 Minute Adjustable - Level Auger .....	20
60 Minute Adjustable - Low Grain Level .....	20
Unload Auger .....	2-7
Auger .....	14
Belts .....	14
Motor .....	8
Pans .....	39
10" Auger Extension Kits .....	39
Vaporizer Coil - LP Gas .....	16
Walkway (Optional) .....	40

## NOTES

---



---



---



---



---



---



---

# NOTES

# INTRODUCTION

## Parts Ordering Instructions

1. Order parts from your local M-C Dealer or distributor.
2. Always furnish the Grain Dryer model and serial number. This information is stamped on the serial number plate.
3. When ordering parts be sure to furnish the part number, description and quantity required.

**NOTE:** Attaching hardware is listed, but not included with, the main part. It must be ordered separately.

4. Inspect all shipments upon receipt. If any packages and/or boxes are missing, or parts are damaged, file a claim with the carrier immediately. Failure to do so may void a claim. Check the shipment against the packing list carefully. Report any shortages to the shipper immediately.

5. Do not return any parts to the Mathews Company without a "Return Goods Authorization" from the factory. All return parts shipments must be shipped prepaid (COD shipments will not be accepted). Shipments must also include the following:

- A. A letter of explanation including the "Return Goods Authorization Number," your name and address.
- B. A list of all parts being returned. List must include part numbers, description, quantity, and original invoice number.

## Model and Serial Number Location

The model and serial number of your Grain Dryer are stamped on a plate located on the right base panel, see Figure 1. Record the model and serial number in the blank spaces in Figure 2.



Figure 1

M-C FARM EQUIPMENT	
MODEL NO.	SERIAL NO.
<input type="text"/>	<input type="text"/>

Figure 2

## Capscrew Grade Identification

There are four grades of hex-head capscrews. Grade 1 and 2 are common capscrews, grade 5 and 8 are used when greater strength is required. Each grade can be identified by the marking on the head of the capscrew, see chart below.

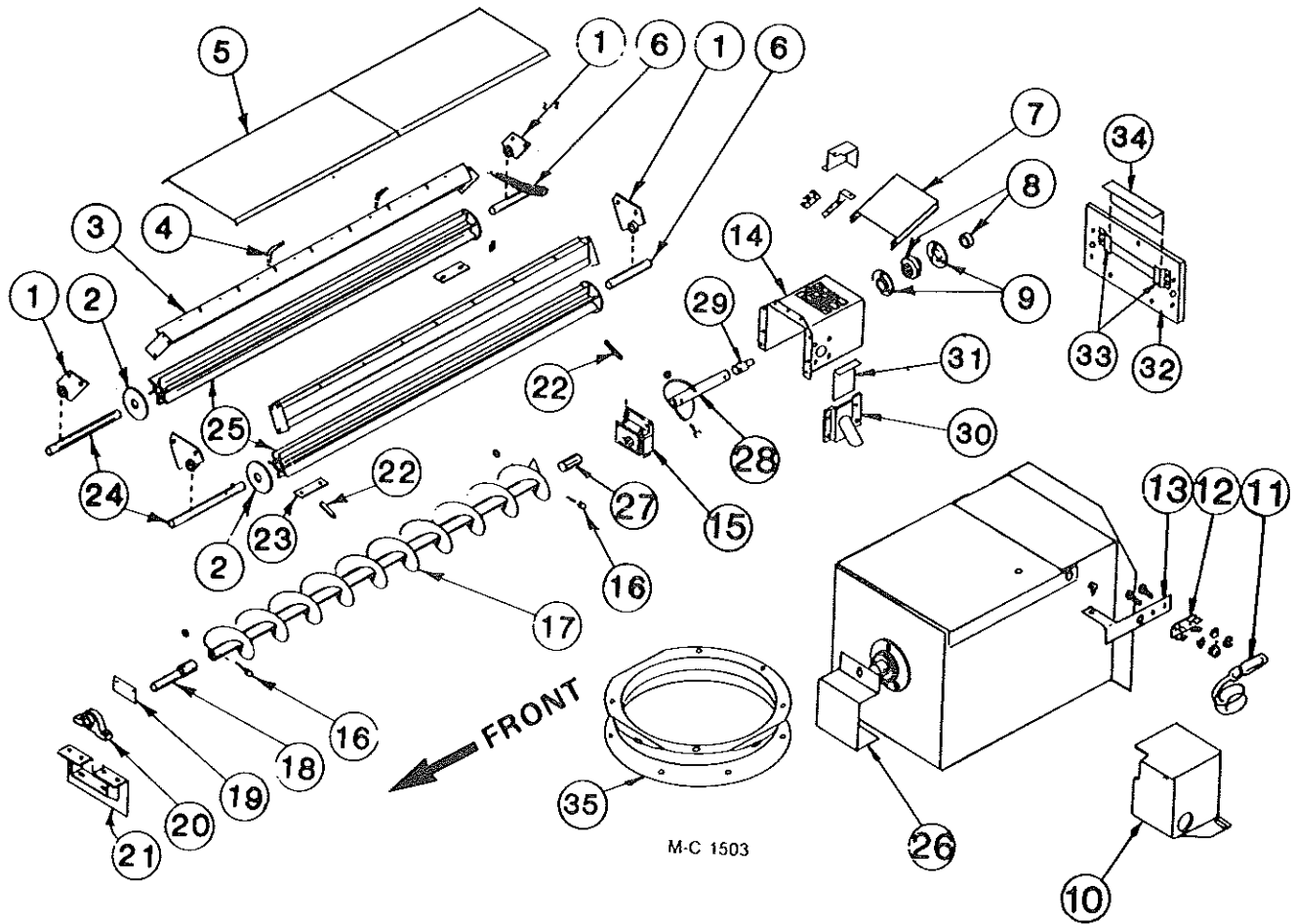
When replacing capscrews, be sure to use the correct size and grade. If a specific grade is not shown as part of the description, the capscrew is a grade 1 or 2.

### CAPSCREW GRADE IDENTIFICATION CHART

S.A.E. Grade	Description	Capscrew Head Marking*
1	WILL HAVE A PLAIN HEAD - NO RADIAL LINES	
2	Low or Medium Carbon Steel Not Heat Treated	
5	WILL HAVE 3 RADIAL LINES Quenched and Tempered Medium Carbon Steel	
8	WILL HAVE 6 RADIAL LINES Quenched and Tempered Special Carbon or Alloy Steel	

\*The center marking identifies the capscrew manufacturer.

# 370 METERING ROLLS AND UNLOAD AUGER



Ref.	Part No.	Qty.	Description
1	128 1063	4	Metering Roll Bearing w/Bronze Bushing
	001 8202	8	5/16-18 x 3/4" Hex Bolt
	000 8169	8	5/16-18 Flanged Locknut
2	121 4438	AR	Metering Roll Washer - 11 Gauge
	128 4970	AR	Metering Roll Washer - 16 Gauge
3	128 0225	2	Inner Screen Mount
	001 8202	12	5/16-18 x 3/4" Hex Bolt
	000 8169	12	5/16-18 Flanged Locknut
4	128 8958	4	Support Rod (3/8"x4 3/8")
	000 8173	4	5/16" Flatwasher
	000 8168	12	3/8-16 Flanged Locknut
5	128 2890	2	Unload Auger Cover
	001 8111	4	5/16-18 Clip Nut
	001 8114	4	5/16-18 x 3/4" Wing Screw
	000 8173	4	5/16" Flatwasher

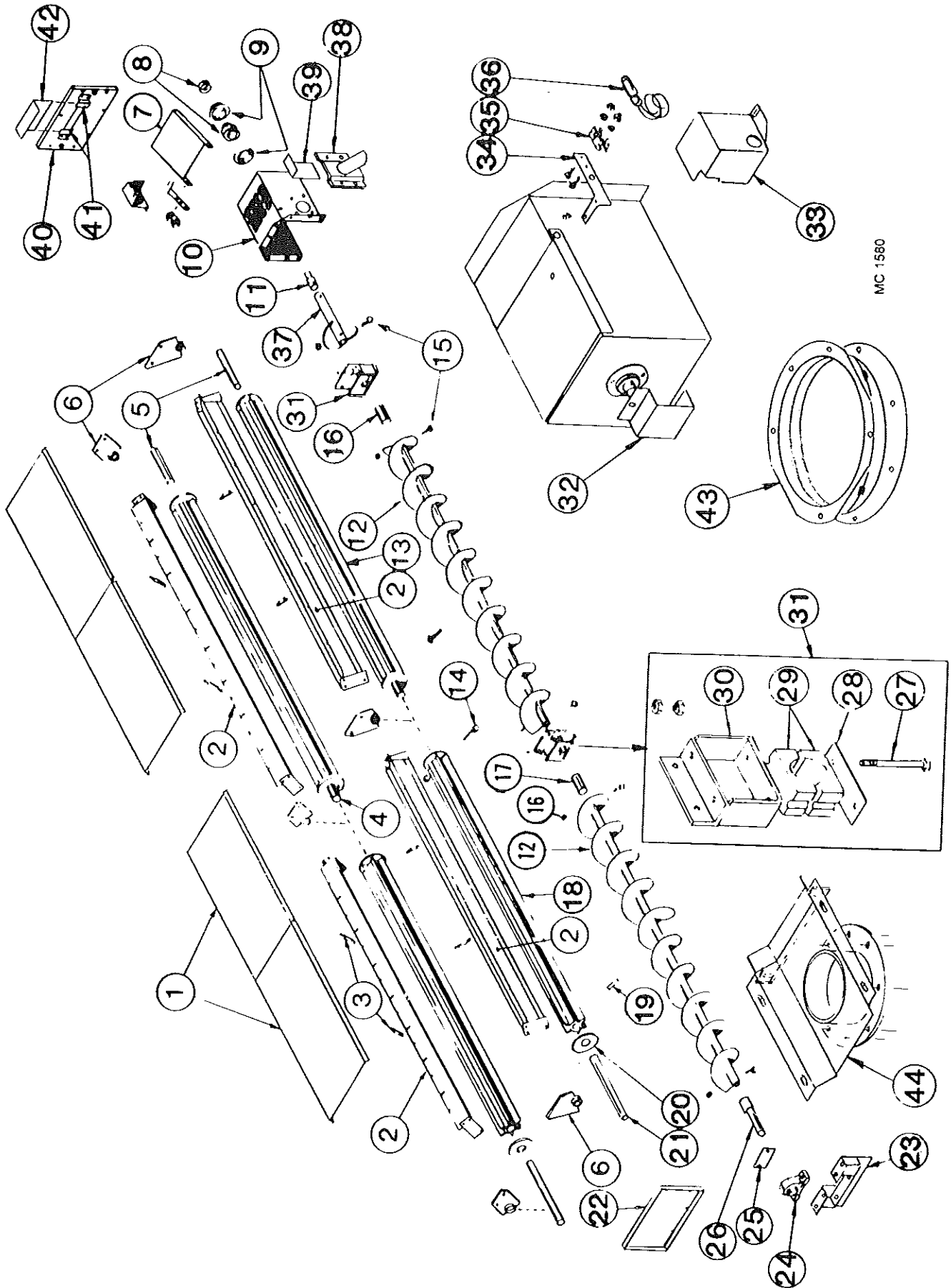
Ref.	Part No.	Qty.	Description
6	121 5042	2	Metering Roll Stub Shaft (Rear) 1 1/4" x 5" (press fit in metering roll)
7	128 4712	1	Over Load Door
	001 8210	2	3/8-16 x 3/4" Hex Bolt
	000 8205	2	3/8-16 Top Lock Flanged Nut
8	001 6003	1	1 1/4" Bearing w/Lock Collar
9	001 6004	2	1 1/4" Bearing Flangette
	001 8210	3	3/8-16 x 3/4" Hex Bolt
	000 8168	3	3/8-16 Flanged Locknut
10	128 4896	1	Shut-Off Switch Cover
	001 8284	2	5/16-12 x 1/2" Self-Tapping Screw
11	120 6800	1	Shut Off Switch
12	120 6801	1	Switch Mount Clip
	000 8282	2	6-32 x 1/4" Machine Screw
	000 8185	2	6-32 Flanged Locknut

## 370 METERING ROLLS AND UNLOAD AUGER

Ref.	Part No.	Qty.	Description
13	128 2937	1	Switch Mount
14	128 0345	1	Unload Auger Discharge
	001 8202	9	3/8-16 x 3/4" Hex Washer Head Bolt - Grd. 5
	000 8169	9	3/8-16 Flanged Locknut
15	122 1007	1	Unload Hanger Bearing Kit
16	000 8229	8	3/8-16 x 2 3/4" Capscrew - Grd. 5
	000 8205	8	Top-Lock Flange Nut
17	128 0244	1	Unload Auger (10")
18	124 5610	1	Unload Auger Input Shaft
19	128 3008	1	Front Seal Plate
	000 8184	4	8-18 x 1/2" Sheet Metal Screw
20	001 6011	1	1-7/16" Bore Pillow Block Bearing
	001 8299	2	1/2"-13 x 1 3/4" Capscrew - Grd. 8 w/Nylock
	001 8257	2	1 1/2" SAE Flatwasher
	000 8163	2	1/2-13 Hex Nut
21	128 0247	1	Unload Auger Front Plate
	001 8210	4	3/8-16 x 3/4" Hex Washer Head Bolt - Grd. 5
	000 8168	4	3/8-16 Flanged Locknut
22	000 8259	2	Roll Pin 5/16 x 1 3/4"
23	121 2637	2	Clean-Out Cover
	000 8168	4	3/8-16 Flanged Locknut
24	128 5042	2	Metering Roll Shaft (Front) 1 1/4" x 13 3/4" (press fit in metering roll)
25	128 1186	2	Metering Roll Assembly (Incl. shafts)
26	128 3011	1	Stub Shaft Guard
27	128 5618	1	Unload Auger Link
28	128 0309	1	Standard Auger Weld
29	124 5611	1	Unload Auger Output Shaft
30	128 0341	1	Grain Sampler
31	128 2842	1	Slide Gate Door - Sampler
32	128 2954	1	Base Panel Access Door w/Slot
33	128 2885	2	Access Door Bracket
34	128 2887	1	Access Door Slot Cover
35	128 0343	1	Discharge Ring (10")



# 570 METERING ROLLS AND UNLOAD AUGER



MC 1580

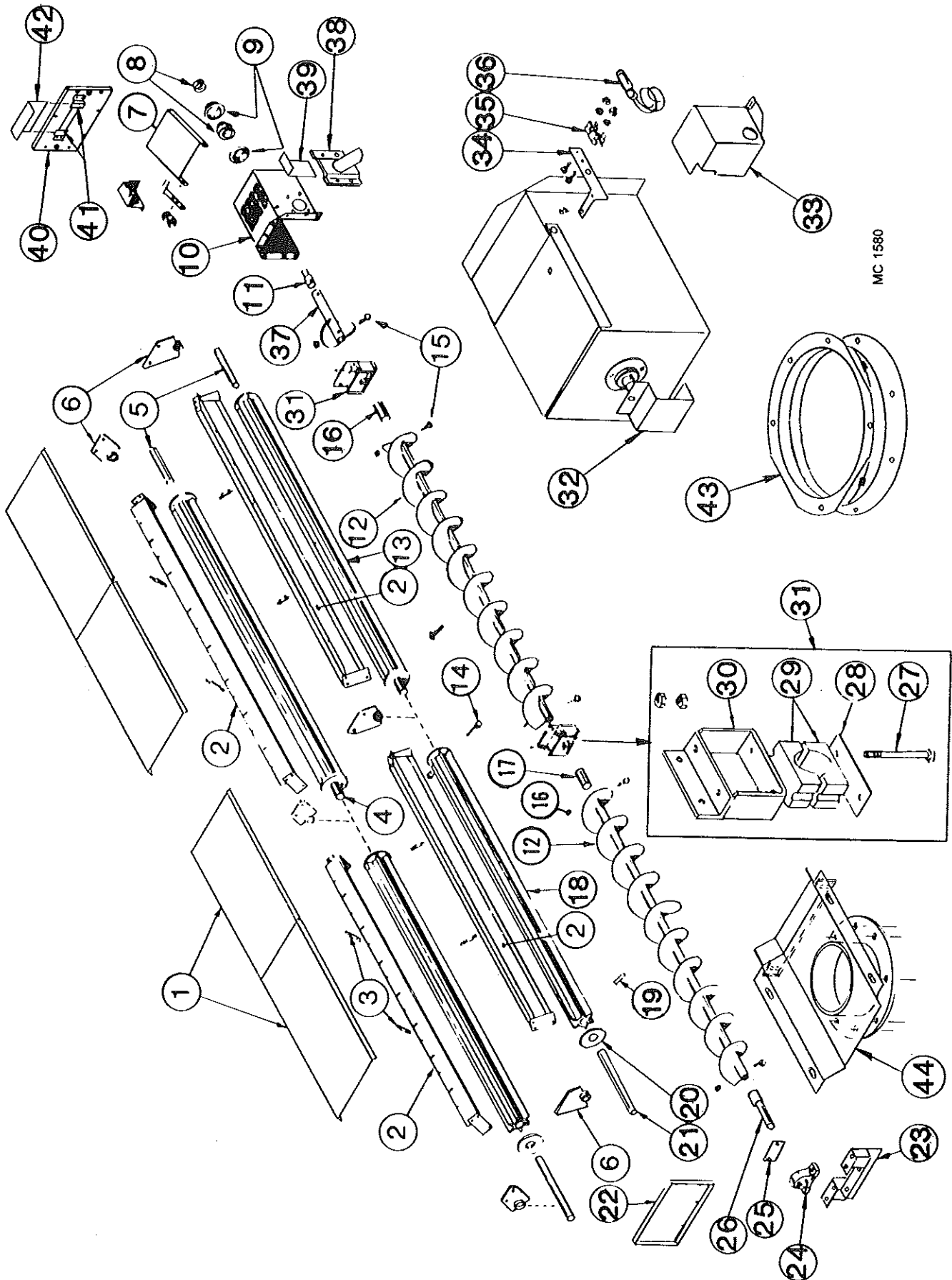
# 570 METERING ROLLS AND UNLOAD AUGER

Ref.	Part No.	Qty.	Description	Ref.	Part No.	Qty.	Description
1	128 2890	4	Unload Auger Cover	12	128 0244	2	Unload Auger Section (10")
	001 8111	8	5/16-18 Clip Nut	13	121 1082	2	Rear Metering Roll Assembly (Incl. shafts)
	001 8202	8	5/16-18 x 3/4" Hex Washer Head Bolt	14	000 8114	2	5/16-18 x 2 1/2" Capscrew
	000 8173	8	5/16" Flatwasher		000 8222	2	5/16" Lockwasher
2	128 0225	4	Inner Screen Mount		000 8159	2	5/16-18 Hex Nut
	001 8202	18	5/16-18 x 3/4" Hex Washer Head Bolt	15	000 8229	8	3/8-16 x 2 3/4" Capscrew-Grd. 5
	000 8169	18	5/16-18 Flanged Locknut	16	000 8205	8	Top Lock Flange Nut
3	128 8958	8	Support Rod (3/8" x 4-3/8")	17	128 5618	1	Unload Auger Link
	000 8173	8	5/16" Flatwasher	18	128 1254	2	Front Metering Roll Assembly (Incl. shaft)
	000 8168	24	3/8-16 Flanged Locknut	19	000 8259	3	Roll Pin 5/16" x 1 3/4"
4	121 5043	2	Center Metering Roll Shaft - 1 1/4" x 7" (press fit in metering roll)	20	121 4438	4	Metering Roll Washer-11 Gauge
5	121 5042	2	Rear Metering Roll Stub Shaft - 1 1/4" x 5" (press fit in metering roll)		128 4970	4	Metering Roll Washer-16 Gauge
6	128 1063	6	Metering Roll Brg. w/Bronze Bushing	21	128 5042	2	Front Metering Roll Shaft - 1 1/4" x 13 3/4" (press fit in metering roll)
	001 8202	12	5/16-18 x 3/4" Hex Washer Head Bolt	22	128 2894	2	Base Panel Access Door (17 1/2" x 10 1/2")
	000 8169	12	5/16-18 Flanged Locknut	23	001 8284	14	5/16-12 x 1/2" Self Tapping Screw
7	128 4712	1	Over Load Door		128 0247	1	Unload Auger Front Plate
	001 8210	2	3/8-16 x 3/4" Hex Washer Head Bolt		001 8210	4	3/8-16 x 3/4" Hex Washer Head Bolt
	000 8205	2	3/8-16 Top Lock Flanged Nut		000 8168	4	3/8-16 Flanged Locknut
8	001 6003	1	1 1/4" Bearing w/Lock Collar	24	001 6011	1	1-7/16" Bore Pillow Block Bearing
9	001 6004	2	1 1/4" Bearing Flangette		001 8299	2	1/2-13 x 1 3/4" Capscrew-Grd. 8 w/Nylock
	001 8209	3	3/8-16 x 1" Hex Washer Head Bolt		001 8257	2	1/2" SAE Flatwasher
	000 8168	3	3/8-16 Flanged Locknut		000 8163	2	1/2-13 Hex Nut
10	128 0328	1	Unload Auger Discharge Round (Front Unload - See Note 1)				
	001 8210	6	3/8-16 x 3/4" Hex Washer Head Bolt				
	000 8205	6	3/8-16 Top Lock Flanged Nut				
11	124 5611	1	Unload Auger Output Shaft				

NOTE 1: Dryers w/Front Unload - Use Kit #127 9119.

Continued on next page

# 570 METERING ROLLS AND UNLOAD AUGER

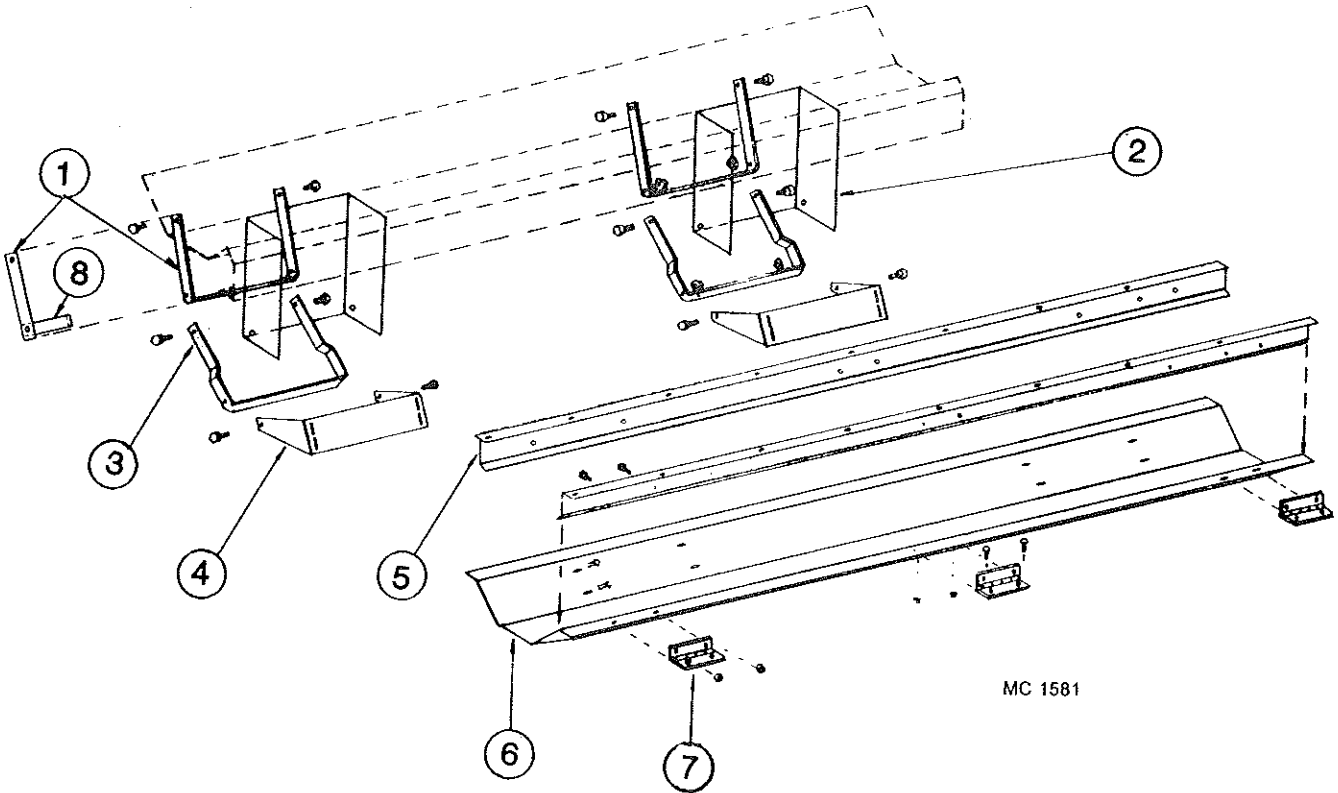


MC 1580

# 570 METERING ROLLS AND UNLOAD AUGER

Ref.	Part No.	Qty.	Description
25	128 3008	1	Front Seal Plate
	000 8184	4	8-18 x 1/2" Sheet Metal Screw
26	124 5610	1	Unload Auger Input Shaft
27	001 8168	2	1/2-13 x 4 1/2" Capscrew - Grd. 5
	000 8180	2	1/2" Lockwasher
	000 8163	4	1/2-13 Hex Nut
28	128 4250	1	Unload Auger Mid Brg. Support
29	128 6020	1	Wood Brg. 1-5/16" (2 Halves)
30	128 0287	1	Unload Auger Brg. Brkt.
	000 8137	2	1/2-13 x 1 1/4" Capscrew - Grd. 5
	000 8180	2	1/2" Lockwasher
	000 8163	2	1/2-13 Hex Nut
31	122 1007	2	Unload Auger Brg. Kit (Incl. Ref. 27 thru 30 in quantities reqd. for one brg.)
32	128 3011	1	Stub Shaft Guard
33	128 4896	1	Shut-Off Switch Cover
	001 8284	2	5/16-12 x 1/2" Self-Tapping Screw
34	128 2937	1	Switch Mount
35	120 6801	1	Switch Mount Clip
	000 8282	2	6-32 x 1/4" Machine Screw
	000 8185	2	6-32 Flanged Locknut
36	120 6800	1	Shut Off Switch
37	128 0309	1	Standard Auger Weld
38	128 0341	1	Grain Sampler
39	128 2842	1	Slide Gate Door - Sampler
40	128 2954	1	Base Panel Access Door w/Slot
41	128 2885	2	Access Door Bracket
42	128 2887	1	Access Door Slot Cover
43	128 0343	1	Discharge Ring (10")
44	128 0331	1	10" Front Unload Auger Weldment (Optional)

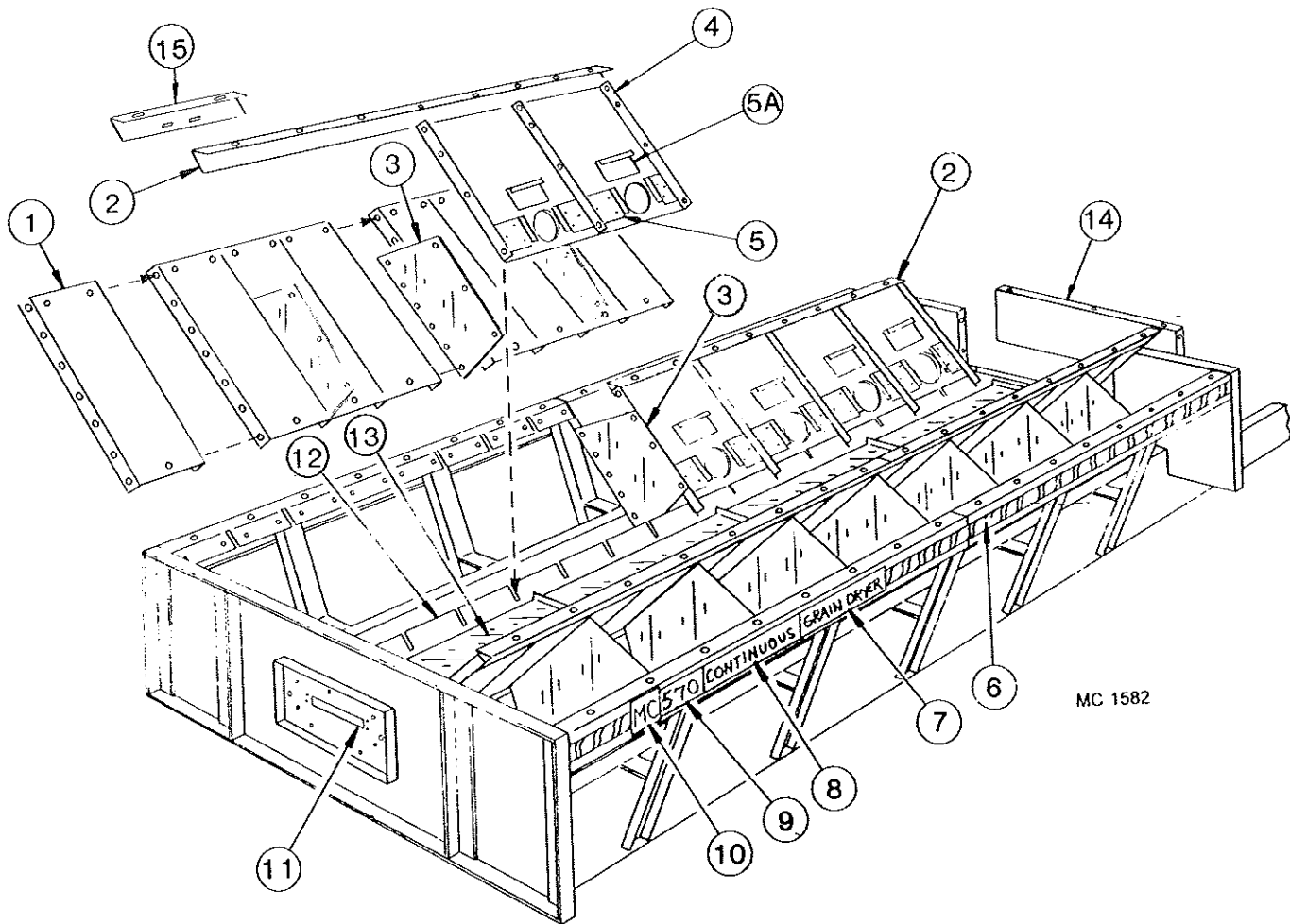
# UNLOAD AUGER PANS



MC 1581

Ref.	Part No.	370 Qty	570 Qty.	Description
1	128 2029	2	4	Auger Dump Arm - Upper
2	128 8355	2	4	Warning Decal (not shown)
3	128 2030	2	4	Auger Dump Arm - Lower
4	128 2751	2	4	Bottom Link Pivot Base
5	128 2673	2	4	Pan Hinge Angle
6	128 2752	1	2	Auger Dump Pan
7	128 8957	3	6	Hinge
8	128 2032	2	4	Auger Dump Arm Handle

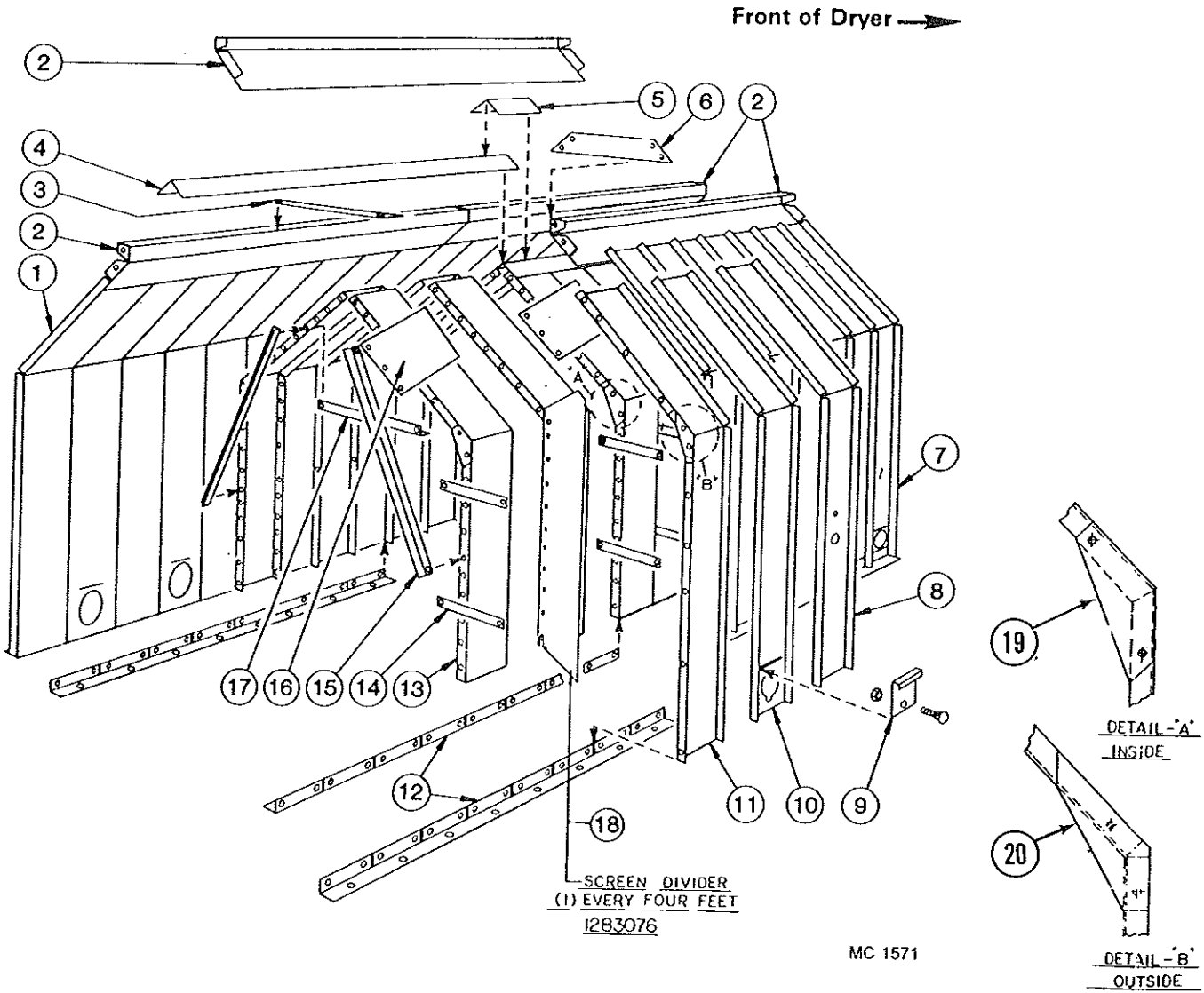
# BASE SCREENS



MC 1582

Ref.	Part No.	370 Qty	570 Qty	Description	Ref.	Part No.	370 Qty	570 Qty	Description
1	-----	-	-	Lower Outer Screen	10	128 8300	2	2	M-C Decal - 5" x 4-9/16"
	127 2945	16	32	Small Seed (Galv.)	11	128 2954	1	1	Base Panel Access Door w/Slot
2	128 2739	2	4	Lower Screen Mount Angle		001 8284	7	7	5/16-12 x 1/2" Self-Tapping Screw
3	128 2855	6	14	Lower Screen Stiffener	12	128 0225	2	4	Inner Screen Mount
4	-----	-	-	Lower Inner Slope Screen w/Clean-Out (24" wide)		001 8202	12	18	5/16-18 x 3/4" Hex Washer Head Bolt
	124 2000	8	16	Galvanized (Std.)		000 8169	12	18	5/16-18 Flanged Locknut
	124 2001	8	16	Small Seed (Galv.)	13	128 2890	2	4	Unload Auger Cover
5	124 2866	16	32	Slope Door Retainer		001 8111	4	8	5/16-18 Clip Nut
	000 8244	48	96	8-18 x 1/2" Hex Head Sheet Screw		001 8114	4	8	5/16-18 x 3/4" Wing Screw
5A	128 3003	8	16	Slope Door		000 8173	4	8	5/16" Flatwasher
6	128 8310	7'	24'	Red & Yellow Stripe Decal - 2 1/2"	14	128 4570	1	1	Base Filler Panel-37x13 1/2"
7	128 8309	2	2	"Grain Dryer" Decal		001 8209	12	12	3/8-16 x 1" Hex Washer Head Bolt Grd. 5
8	128 8308	2	2	"Continuous" Decal		000 8168	12	12	3/8-16 Flanged Locknut
9	128 8376	-	2	"570" Base Decal	15	120 3070	-	2	Seal Angle
	128 8374	2	-	"370" Base Decal					

# UPPER SCREENS



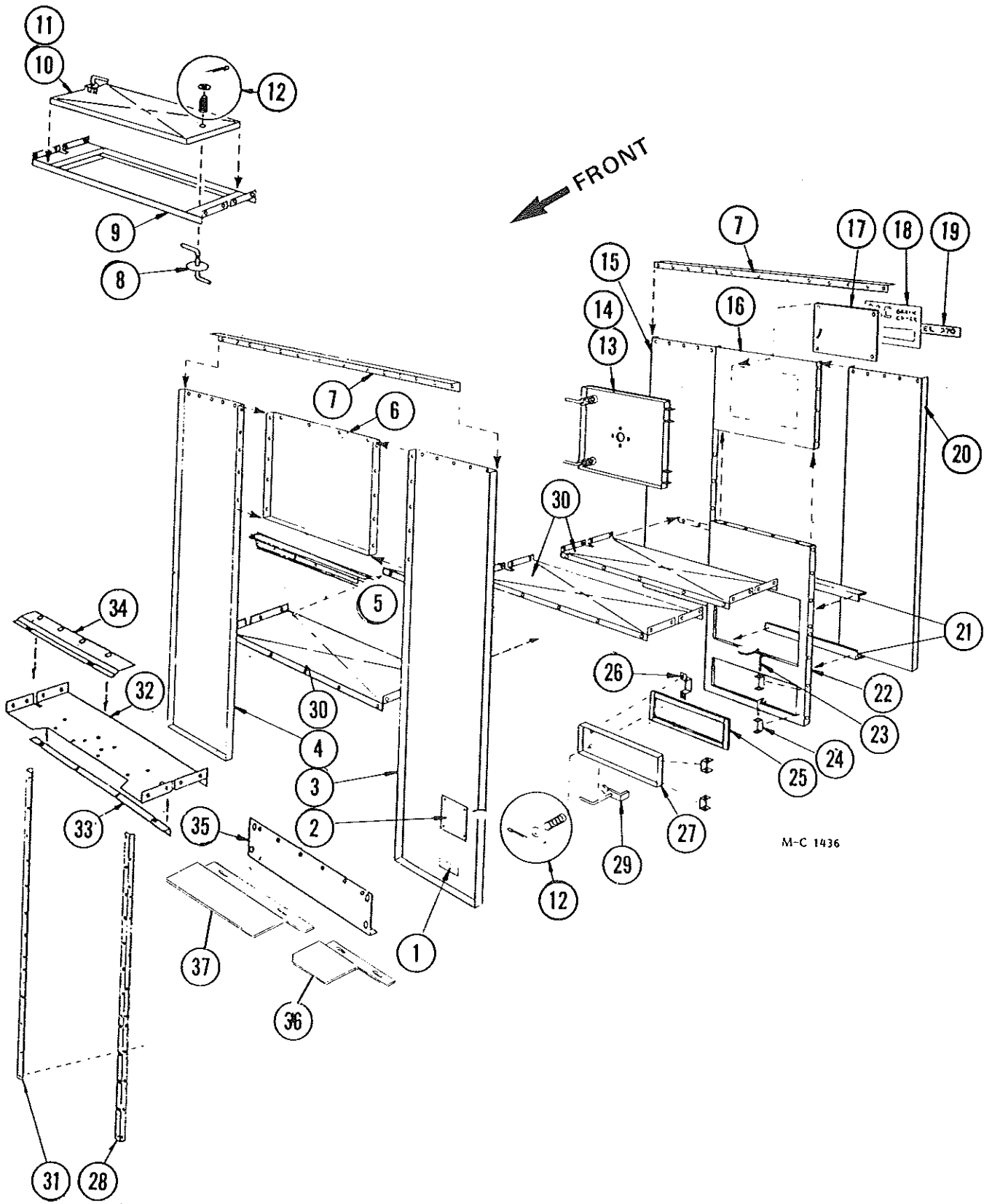
# UPPER SCREENS

Ref.	Part No.	370 Qty.	570 Qty.	Description
1	-----	-	-	<b>Outer End Screen w/o Quick Drain</b>
	021 2946	2	2	Galvanized (Std.)
	127 2967	2	-	Small Screen (Galv.)
	123 5213	2	2	Aluminum
	124 2006	2	2	Canola (Aluminum)
	124 2012	2	2	Canola (Galv.)
2	129 2832	2	4	Hopper Joiner Angle Galvanized (Std.)
	1242014	2	4	Hopper Joiner Angle Small Seed/Canola (Galv.)
3	129 2947	2	2	Stiffener Strap
4	021 2950	1	2	Hopper Cap
5	128 3075	-	1	Seal Angle
6	129 2831	-	1	Joiner Plate
7	-----	-	-	<b>Outer End Screen w/Quick Drain</b>
	128 3002	2	2	Galvanized (Std.)
	127 2963	-	-	Small Seed (Galv.)
	123 5210	2	2	Aluminum
	124 2007	2	2	Canola (Aluminum)
	124 2013	2	2	Canola (Galv.)
8	-----	-	-	<b>Moisture Control Screen</b>
	021 2947	1	1	Galvanized (Std.)
	127 2966	-	-	Small Seed (Galv.)
	123 5214	1	1	Aluminum
		1	1	Canola (Aluminum)
9	-----	-	-	<b>Quick Drain Door</b>
	127 2950	8	16	Galvanized (Std.)
	127 2974	-	16	Small Seed (Galv.)
				Canola (Aluminum)
	001 8269	8	16	3/8-16 x 3/4" Carriage Bolt
	000 8168	8	16	3/8-16 Flanged Locknut
10	-----	-	-	<b>Outer Screen w/Quick Drain</b>
	128 3001	6	14	Galvanized (Std.)
	127 2965	-	14	Small Screen (Galv.)
	123 5212	6	14	Aluminum
	124 2007	6	14	Canola (Aluminum)
	124 2013	6	14	Canola (Galv.)
11	-----	-	-	<b>Outer Screen w/o Quick Drain</b>
	021 2945	5	13	Galvanized (Std.)
	127 2964	-	14	Small Screen (Galv.)
	123 5211	5	13	Aluminum
	124 2006	5	13	Canola (Aluminum)
	124 2012	5	13	Canola (Galv.)
12	125 2732	4	8	Screen Mount Angle
13	-----	-	-	<b>Inner Screen</b>
	021 2949	16	32	Galvanized (Std.)
	127 2968	16	32	Small Seed (Galv.)
	124 2005	16	32	Canola (Galv.)
14	121 3007	28	60	Stiffener Strap
15	128 2663	6	14	Inner Brace
16	128 3072	6	14	Peak Screen Stiffener
17	021 2600	3	7	Inner Cross Tie
18	128 3076	2	6	Screen Divider
19	128 3080	14	30	Inner Screen Joint Seal (used w/canola screens only)
20	128 3079	14	30	Outer Screen Joint Seal (used w/canola screens only)



# END PANELS AND FLOOR PANELS

(Model 370 & 570C)



M-C 1436

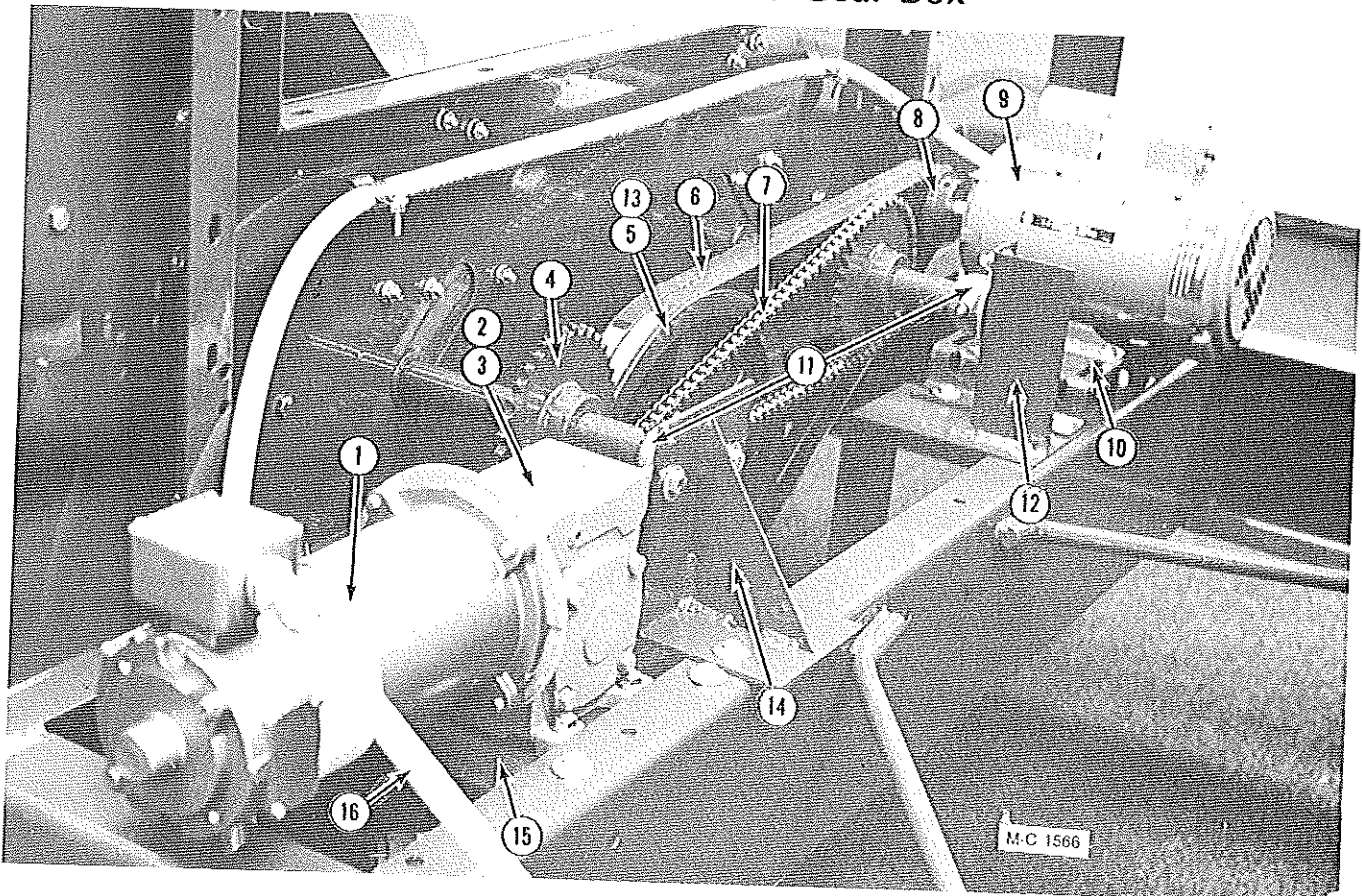
## END PANELS AND FLOOR PANELS

(Model 370 & 570C)

Ref.	Part No.	370 570		Description
		Qty	Qty.	
1	121 8310	1	1	Made in USA - Decal
2	127 8300	1	1	CGA Dryer Plate (Canada Only)
3	126 2831	1	1	Left Front Panel
4	126 2830	1	1	Right Front Panel
5	128 2644	1	1	Fan Housing Mount - Top
6	126 2832	1	1	Front Panel Above Fan
7	128 2635	2	2	End Panel to Hopper Joiner Angle
8	121 0302	2	2	Latch and Handle
9	121 0299	1	2	Heat Chamber Door Frame
10	121 1113	1	2	Heat Chamber Door Assembly (Incl. ref. 12)
11	121 2970	1	2	Heat Chamber Door Panel
12	001 8256	5	5	Spring - 5/8" ID x 2"
	000 8174	5	5	5/8" Flatwasher
	000 8199	5	5	1/8" x 1" Cotter Pin
13	128 1183	1	1	Rear Door Assembly (Incl. ref.
14	128 2957	1	1	Rear Door Panel
15	021 2832	1	1	Right Rear End Panel
16	128 2919	1	1	Panel Above Top Rear Door
17	128 2999	1	1	Decal Mount Plate
18	128 8331	1	1	Large Decal - 975 - See note
19	128 8373	1	1	370 Model Decal
	128 8375	1	1	570 Model Decal
20	021 2833	1	1	Left Rear End Panel
21	124 4463	2	2	Brace, Rear Door Frame
22	124 2755	1	1	Dryer Rear Door Frame
23	128 5201	4	4	Hinge Pin
24	128 2740	4	4	Door Hinge
25	121 8966	2	2	Weather Stripping
26	121 2887	1	1	Door Handle
	128 8251	4	4	8-18 x 1/2" Sheet Metal Screws
27	128 3009	1	1	Rear Door
28	128 2646	1	1	Fan Housing Mount - Left
29	121 0414	3	3	Latch and Handle
30	121 2928	2	5	Unit Floor Panel
31	128 2645	1	1	Fan Housing Mount - Right
32	126 2833	1	1	Front Floor Panel
33	126 2000	1	1	Floor Panel Support Angle
34	124 2851	1	1	Air Flow Director 40 1/2" (All Heat)
35	126 2834	1	1	Panel Below Fan Housing
36	124 2849	1	1	Air Flow Director LH 15 7/8" (Dry/Cool)
37	124 2850	1	1	Air Flow Director RH 23 1/8" (Dry/Cool)

**NOTE:** This decal is imprinted "Model 975." Order one of Ref. 19 to be placed over "Model 975."

## SCR Drive Motor and Gear Box



Ref.	Part No.	Qty.	Description
1	124 6837	1	DC Motor - 1/3 HP
	122 8613	-	DC Motor Brush
2	124 6624	1	SCR Gear Box (Incl. 3/16" x 1" Key- 001 5110)
	128 8947	1	Pint of Mobil SHC 634 Oil
	000 8123	4	3/8-16 x 1/4" Capscrew
	000 8174	4	3/8" Flatwasher
	000 8168	4	3/8" Flanged Locknut
3	128 6422	1	SCR Gear Box Sprocket (not shown) RC-40 12T, 3/4" Bore
4	128 6423	2	Sprocket-RC40-36T-1 1/4" Bore
	000 8298	2	Woodruff Key - 1/4" x 3/4"
5	021 6201	1	Pulley-2B x 13.6 SK
	001 5130	1	Key - 3/8" x 1"
6	021 6100	1	B-65 Belts (Matched set of 2)
7	128 6315	1	Chain - RC-40 x 130 Pitch
	002 6309	-	Connecting Link
8	121 6210	1	Pulley - 2B - 3-3/16"OD - 3/8" Bore
	121 6203	1	Pulley-2B - 3-3/16"OD - 3/8" Bore

Ref.	Part No.	Qty.	Description
9	127 6860	-	230/460V 1.5HP 3Ø Motor
	121 6861	-	230/460V 2HP 3Ø Motor
	001 5112	1	Key - 3/16" x 1 3/8" (For 1 1/2 HP motor)
	001 5114	1	Key-3/16" x 1 5/8" (For 2 HP motor)
	128 1810	1	Motor To Cabinet Wire Ass'y.
	000 8110	1	5/16-18 x 1 1/2" Capscrew
	000 8108	3	5/16-18 x 1" Capscrew
	000 8173	8	5/16" Flatwasher
	000 8169	4	5/16-18 Flanged Locknut
10	124 4214	1	Unload Auger Motor Mt.
	000 8121	4	3/8-16 x 1" Capscrew
	001 8132	1	3/8-16 x 4" "J" Bolt
	000 8174	5	3/8" Flatwasher
	000 8168	5	3/8-16 Flanged Locknut
11	121 6022	2	1 1/4" Outboard Brg.
	000 8121	4	3/8-16 x 1" Capscrew
	000 8174	4	3/8" Flatwasher
	000 8168	4	3/8-16 Flanged Locknut
12	128 0257	1	Gear Mt. Motor Weld.
	000 8119	4	3/8-16 x 3/4" Capscrew
	000 8174	4	3/8" Flatwasher
	000 8168	4	3/8-16 Flanged Locknut

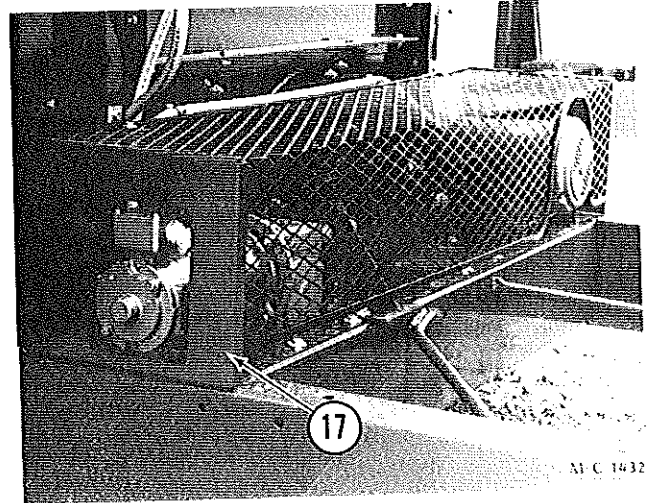
Continued on next page

## SCR DRIVE MOTOR AND GEAR BOX

Ref.	Part No.	Qty.	Description
13	001 6202	1	SK Bushing - 1-7/16" Bore (Incl. capscrews)
14	128 0191	1	Outboard Bearing Mount
15	124 4456	1	Gear Box Mount
	000 8119	4	3/8-16 x 3/4" Capscrew
	000 8174	4	3/8" Flatwasher
	000 8168	4	3/8-16 Flanged Locknut
16	128 1999	1	SCR Motor to Cabinet Flexible Conduit (40")
17	128 0268	1	Drive Guard
	128 8951	2	Rubber Strap w/Hook
	001 3302	2	Angle Clip
	000 8121	4	3/8-16 x 1" Capscrew
	000 8174	6	3/8" Flatwasher
	001 8149	4	3/8-16 Two-Way Locknut

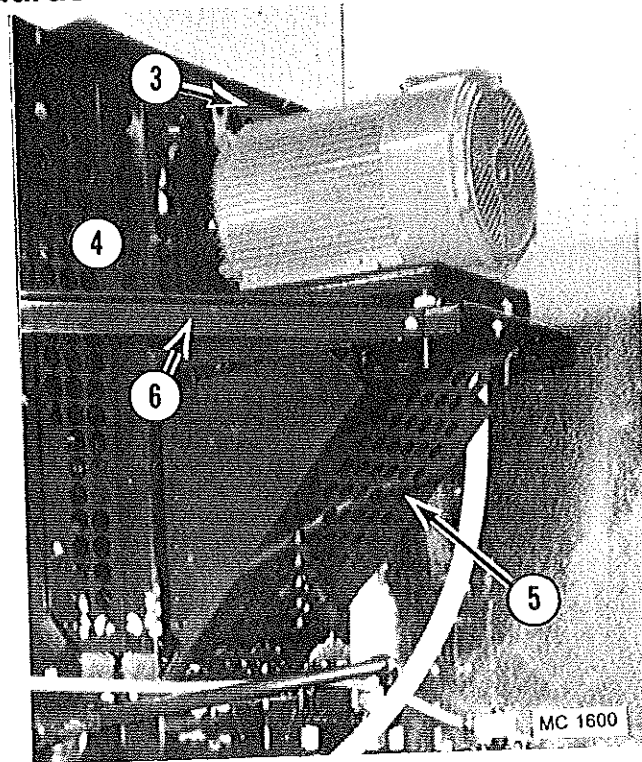
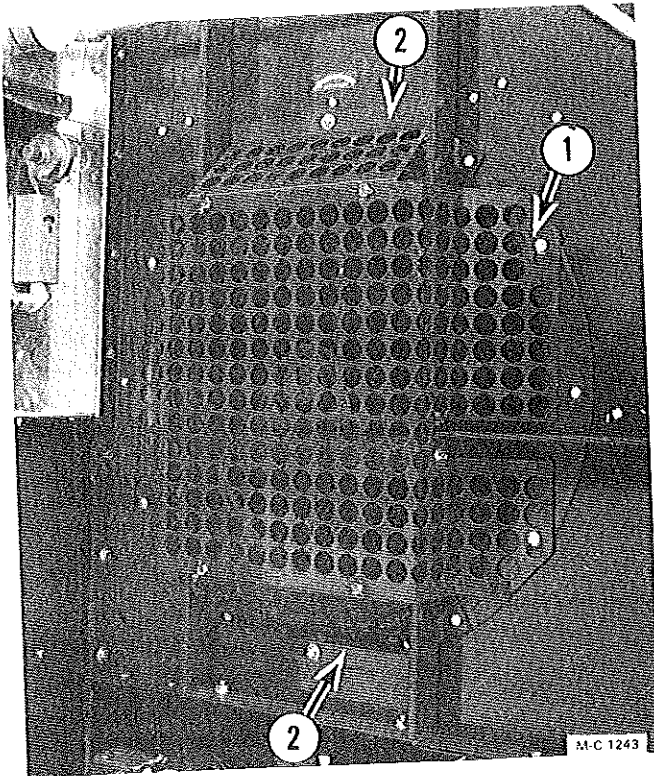
**Not Shown:**

18	000 8301	2	Safety Shield Warning Decal
-	120 6914	2	Chase Nipple - 1/2"
-	121 6906	2	Pipe Clamp



Ref.	Part No.	Qty.	Description
	000 8212	2	1/4-20 x 1/2" Truss Hd. Screw
	000 8167	2	1/4-20 Flanged Locknut

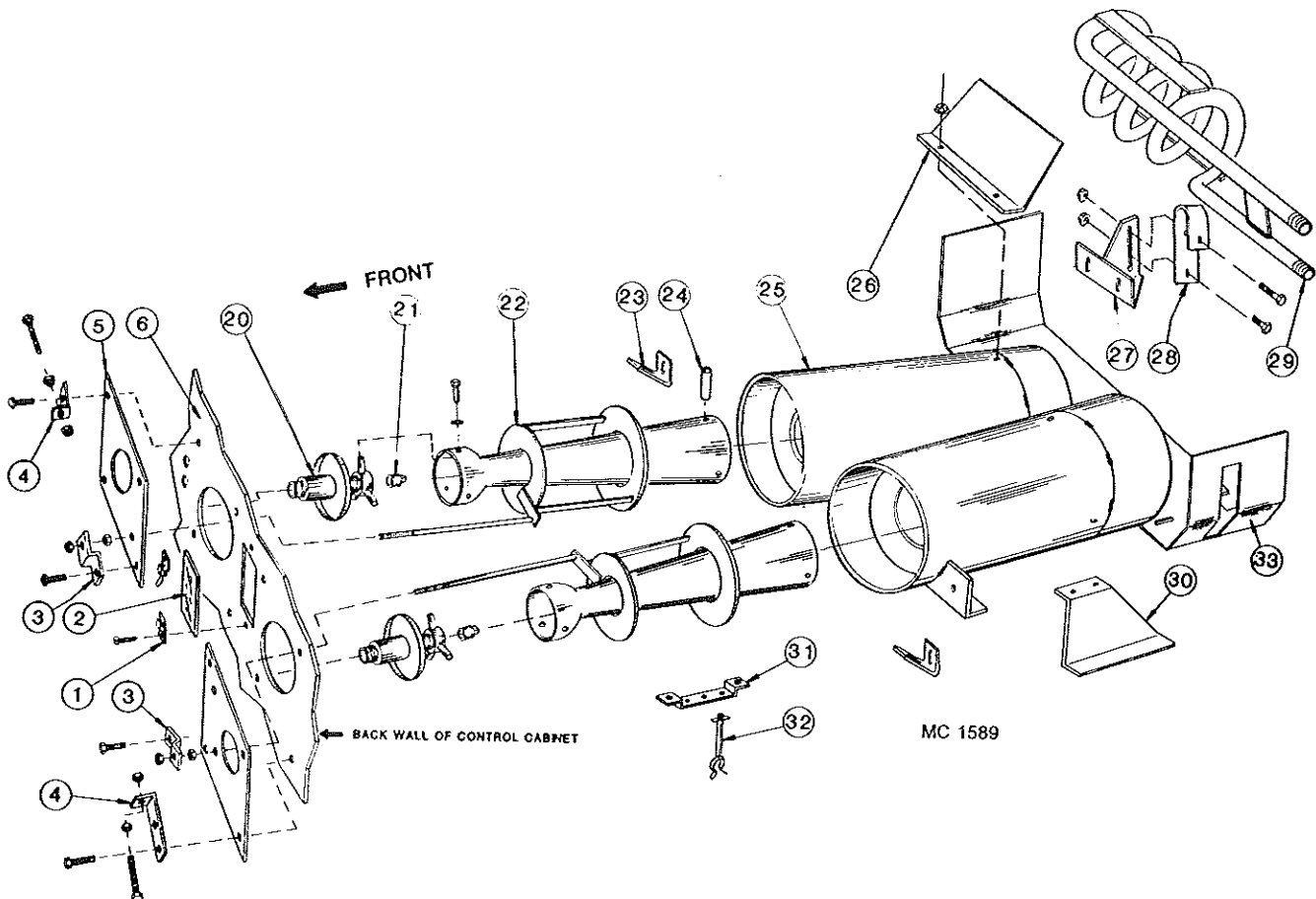
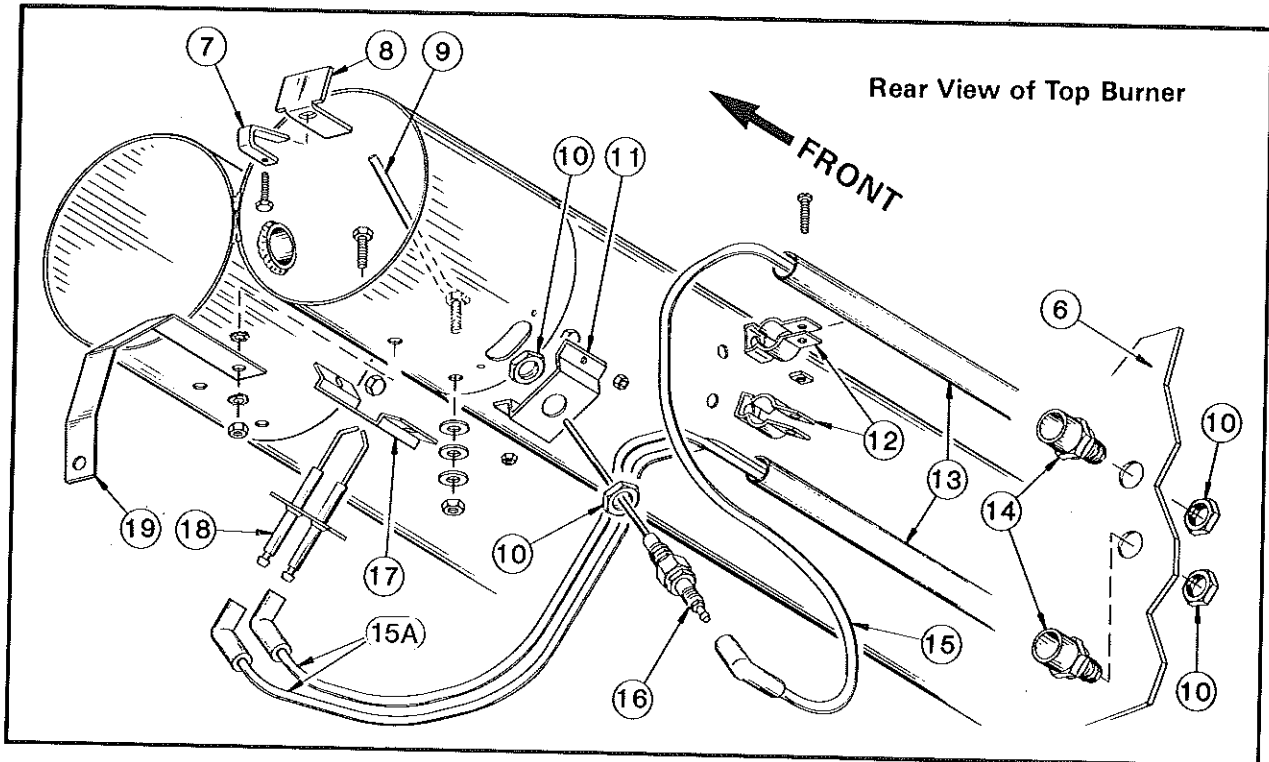
### Fan Guards



Ref.	Part No.	Qty.	Description
1	124 4826	1	Full Fan Guard
2	124 4829	2	Fan Guard Extension - Full
3	121 8301	1	Counterclockwise Arrow Decal

Ref.	Part No.	Qty.	Description
4	124 4774	1	Center Fan/Belt Guard
5	124 4773	1	Below Motor Fan/Belt Guard
6	124 4213	1	Motor Mount Brace

# Venturi Burner



# VENTURI BURNER

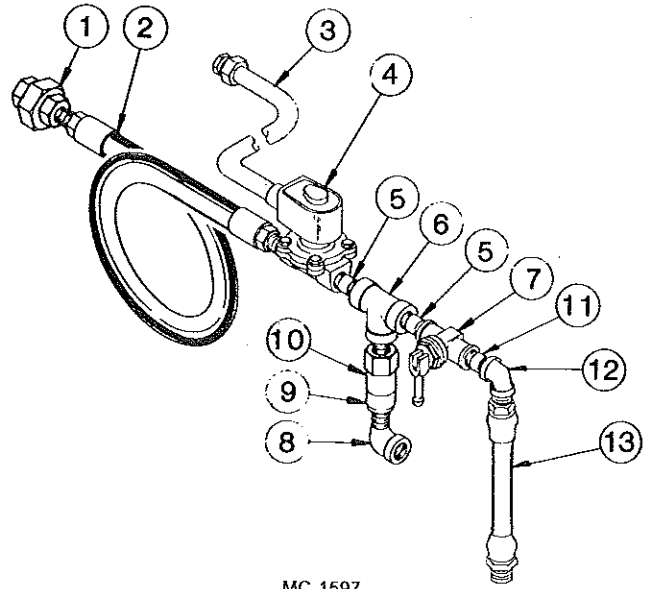
NOTE: Quantities shown are for one burner assembly.

Ref.	Part No.	Qty.	Description
1	128 8969	2	Burner Window Holder Clip
2	128 8968	1	Burner Window
3	128 4515	2	Air Adjuster Bracket
4	128 3371	2	Air Adjuster Clamp Bracket Short (2-15/16")
	128 2008	2	Air Adjuster Clamp Bracket Long (3-9/16")
5	128 4488	2	Hand Hole Cover Plate
6	----	-	Back Wall of Control Cabinet
7	127 5201	1	Eddy Mounting Strip
8	127 5200	1	Natural Gas Eddy
9	128 0197	1	Flame Ground Rod
10	121 6915	4	Locknut - 1/2"
11	128 3007	1	Flame Sensing Probe Bracket
12	121 6906	2	Pipe Clamp
13	128 5742	2	Igniter Line Support Tube
14	128 8061	2	PVC Male Adapter - 1/2"
15	122 9003	1	Ignition Wire
15A	124 1079	2	Low Voltage Wire Assembly
16	124 6872	1	Flame Sensing Probe
17	128 2962	1	Electrode Mounting Bracket
18	128 6995	1	Style 2 Electrode
19	121 3007	1	Ground Strap
20	128 0108	2	Inlet Throttle
21	127 5700	2	Burner Nozzle (Natural Gas- 3/8" Orifice)
	128 5715	2	Burner Nozzle (LP Gas - 1/4" Orifice)
22	128 0112	2	Venturi Burner
23	128 4260	2	Burner Mounting Strap
24	128 5401	6	Venturi Spacer
25	128 0137	1	Venturi Extension
26	----	-	Burner Deflector
	128 5310	1	17 3/8" (For 10HP fan assembly)
	127 5300	1	15 1/4" (For 15HP fan assembly)
	128 5308	1	12 3/4" (For 20HP fan assembly)
27	128 0141	1	Vaporizer Coil Anchor (LP Gas)
28	128 5306	1	Vaporizer Coil Anchor Clip (LP Gas)
29	128 0140	1	Vaporizer Coil (LP Gas)
30	128 4523	1	Burner Front Support - Right
	128 4524	1	Burner Front Support - Left
31	128 4941	1	Wire Support Bracket
32	128 6989	3	Stand-Off Clip
33	128 5313	1	Burner Shroud

## LP Gas Liquid Lines

### Liquid Control Line

Ref.	Part No.	Description
1	121 8022	½" Extra Heavy Union
2	128 8400	½" ID x 34" Hose w/Couplings
3	128 1820	¾" Flexible Conduit
4	125 7082	½" Solenoid Valve
5	121 8094	½" x ½" Extra Heavy Nipple
6	120 8035	½" Extra Heavy Tee
7	121 7015	Hand Valve - ½"
8	121 8048	½" - 90° Standard Street Elbow
9	121 7014	Relief Valve Adapter
10	121 7013	Relief Valve
11	128 8048	½" x 2½" Extra Heavy Nipple
12	121 8036	½" - 90° Extra Heavy Elbow
13	121 7005	Intake Hose Liquid Propane



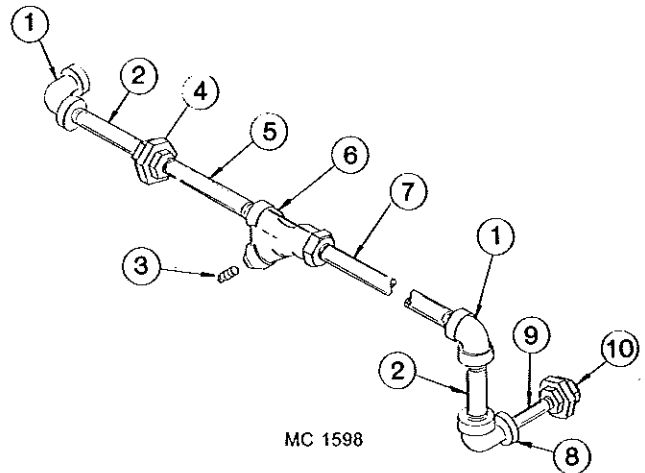
MC 1597

### Solenoid Valve Repair Kit

The repair kit and coil for the ½" solenoid valve (ref. 4) is shown on page 19.

### Vaporizer to Manifold Pipe

Ref.	Part No.	Description
1	121 8027	¾" - 90° Extra Heavy Elbow
2	121 8006	¾" x 2" Extra Heavy Nipple
3	001 8001	¾" Pipe Plug
4	121 8072	¾" Extra Heavy Union
5	125 8058	¾" x 2½" Extra Heavy Nipple
6	121 8060	¾" Strainer
7	128 5426	¾" x 30½" Extra Heavy Nipple
8	121 8032	¾" to ½" - 90° Extra Heavy Elbow
9	121 8094	½" x 1½" Extra Heavy Nipple
10	121 8022	½" Extra Heavy Union



MC 1598

## LP and Natural Gas Manifolds

### REPAIR KITS AND PARTS FOR MODULATING VALVES, SOLENOID VALVES AND LP GAS PRESSURE REGULATORS

#### For Modulating Valves 123 7002 & 123 7024

122 9993 Seat Kit (Incl. stem, disc holder & diaphragm)

122 7006 Diaphragm

#### For 1 1/4" Solenoid Valve 128 7001

122 7034 Repair Kit (See note)

--- 4607 Coil

#### For 1/2" Solenoid Valve 125 7082

122 7039 Repair Kit (See note)

122 7001 Coil

**NOTE:** Kit includes all internal parts that would require replacement in normal service and installation instructions.

#### For LP Gas Pressure Regulator 128 7005

122 7043 - Diaphragm (Nitrile)

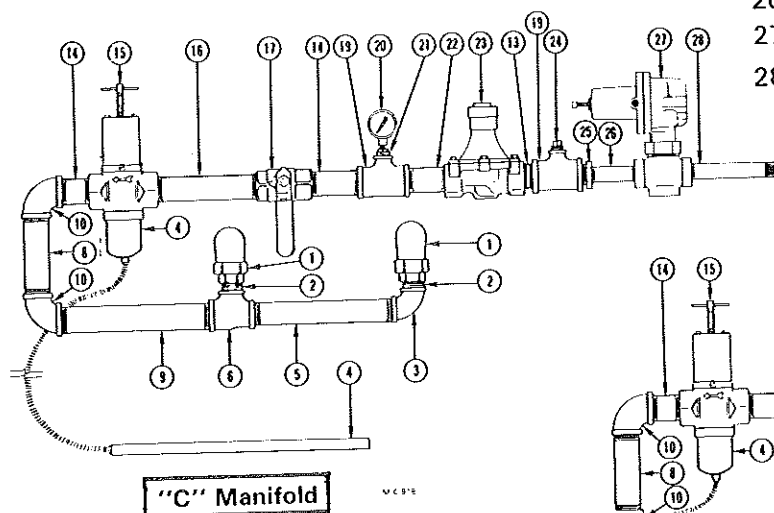
122 7044 - Disc Assembly

122 7045 - Control Spring (Yellow)

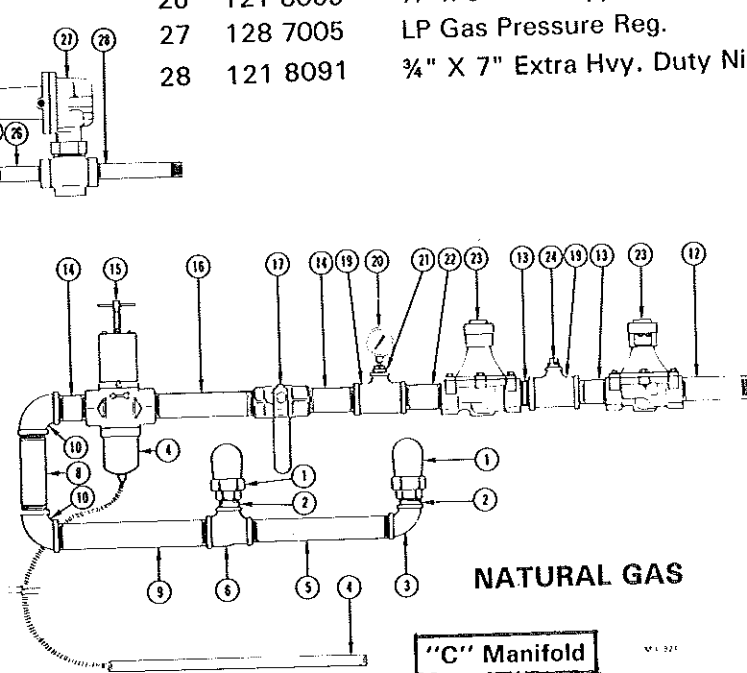
122 7046 - Stabilizer

122 7047 - Diaphragm Case O Ring

Ref.	Part No.	Description
1	128 8029	1" Std. Union Elbow-90°
2	128 8013	1" Std. Close Nipple
3	128 8016	1" Std. Elbow - 90°
4	122 7023	Power Element 90°-210°F (15' Capillary) Code "B" Optional
	122 7036	Power Element 140°-250°F (15' Capillary) Code "D" Standard
5	128 8058	1" x 10 1/2" Std. Nipple
6	128 8007	1 1/4" x 1" x 1" Std. Tee
7	127 8016	1 1/4" x 5 1/2" Std. Nipple
8	123 8046	1 1/4" x 7 1/2" Std. Nipple
9	128 8065	1 1/4" x 11" Std. Nipple
10	123 8051	1 1/4" Std. Elbow - 90°
11	127 8021	1 1/4" x 9 1/2" Std. Nipple
12	123 8073	1 1/4" x 6 1/2" Std. Nipple
13	123 8069	1 1/4" Std. Close Nipple
14	123 8045	1 1/4" x 2 1/2" Std. Nipple
15	123 7024	1 1/4" Modulating Valve w/ 140°- 250°F Power Element
16	129 8033	1 1/4" x 8 1/2" Std. Nipple
17	123 7003	1 1/4" Main Hand Valve
18	128 8024	1 1/4" x 5 Std. Nipple
19	127 8131	1 1/4" x 1 1/4" x 3/8" Std. Tee
20	120 7002	Pressure Gauge
21	127 8132	3/8" to 1/4" Reducing Bushing
22	128 8003	1 1/4" x 3 1/2" Std. Nipple
23	128 7001	1 1/4" Solenoid Valve
24	001 8001	3/8" Pipe Plug
25	123 8078	1 1/4" x 3/4" Std. Reducing Bushing
26	121 8069	3/4" x 3" Std. Nipple
27	128 7005	LP Gas Pressure Reg.
28	121 8091	3/4" X 7" Extra Hvy. Duty Nipple



**LIQUID PROPANE**

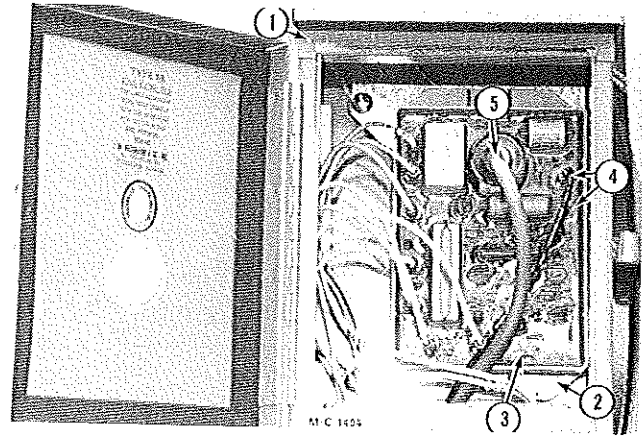


**NATURAL GAS**

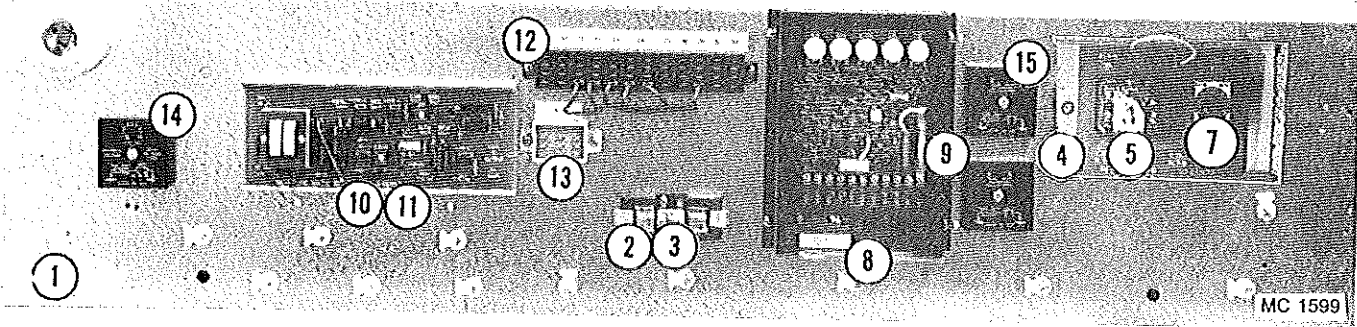


## IGNITION BOARD AND BOX

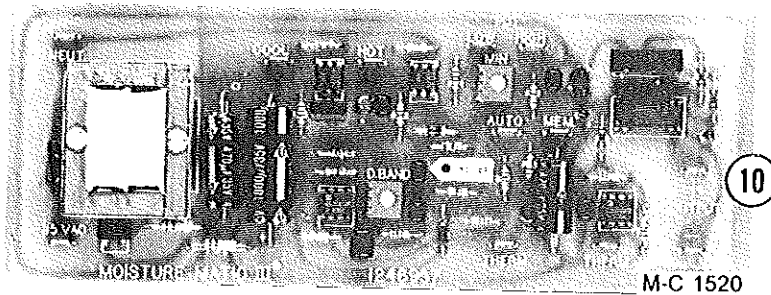
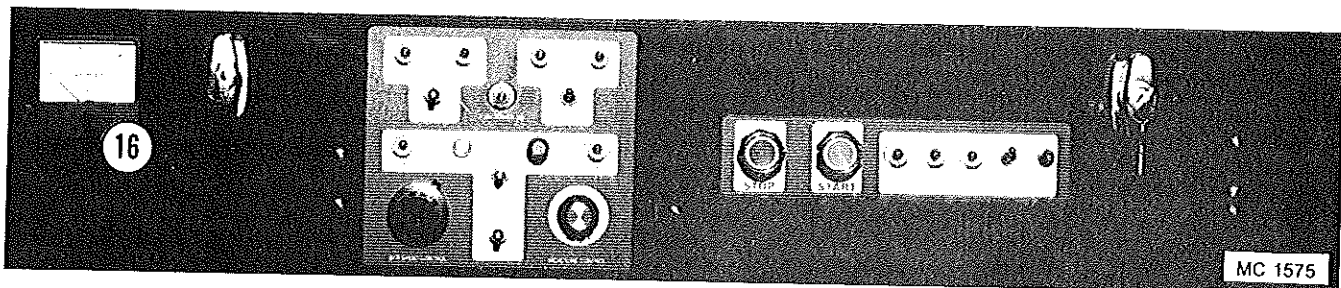
Ref.	Part No.	Qty.	Description
1	128 5995	1	Ignition Box
2	128 2938	1	Ignition Board Mt. Plate
3	121 6925	1	115V Ignition Board
4	124 1079	2	Low Voltage Wire Kit
5	122 9003	1	High Voltage Wire Kit



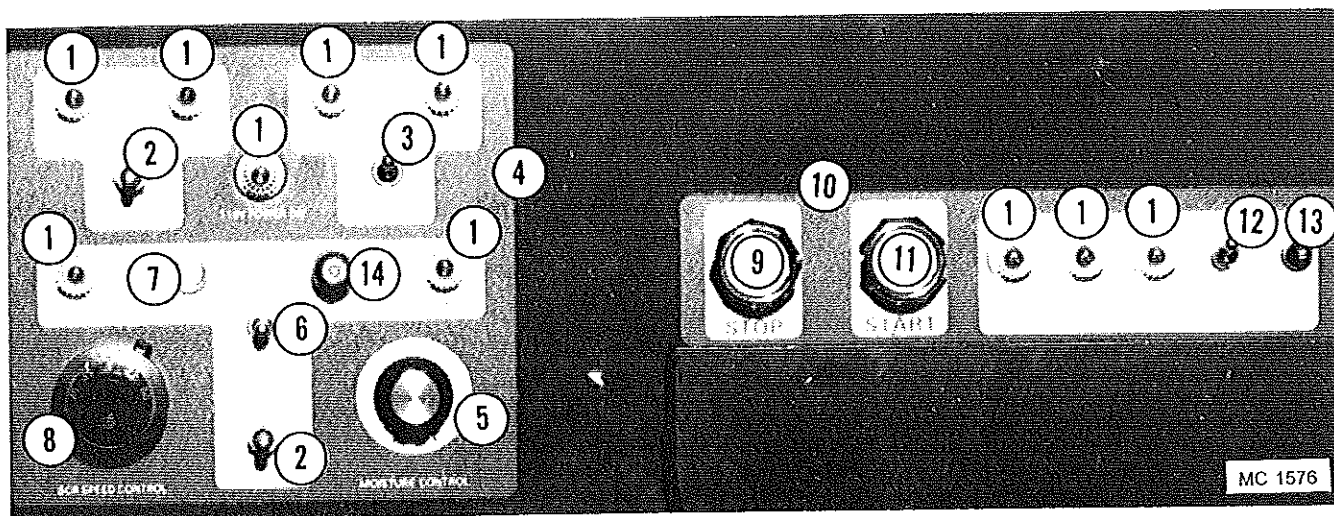
## Electrical Components In 115V Control Cabinet



Ref.	Part No.	Description	Ref.	Part No.	Description
1	124 4806	Component Mounting Board	9	121 6805	10 Amp. - GLH Fuse
2	128 6851	Fuse Holder	10	124 6957	Moisture-Matic III
3	128 6967	10 Amp Fuse (NON-10)	11	128 5916	Snap Track 8 1/2"
4	124 6972	Relay and Timer Socket Board starting with S/N 55242	12	124 6928	Terminal Block 12-Position
5	021 6809	Relay	13	124 6929	Terminal Block 3-Position
7	124 6978	60 Minute Adjustable Timer starting with S/N 55242	14	124 6890	.1 to 8 Minute Adjustable Level Auger Timer
8	124 6874	SCR Board (Dart)	15	124 6831	10 Second Ignition Timer
			16	124 6981	Discharge Meter

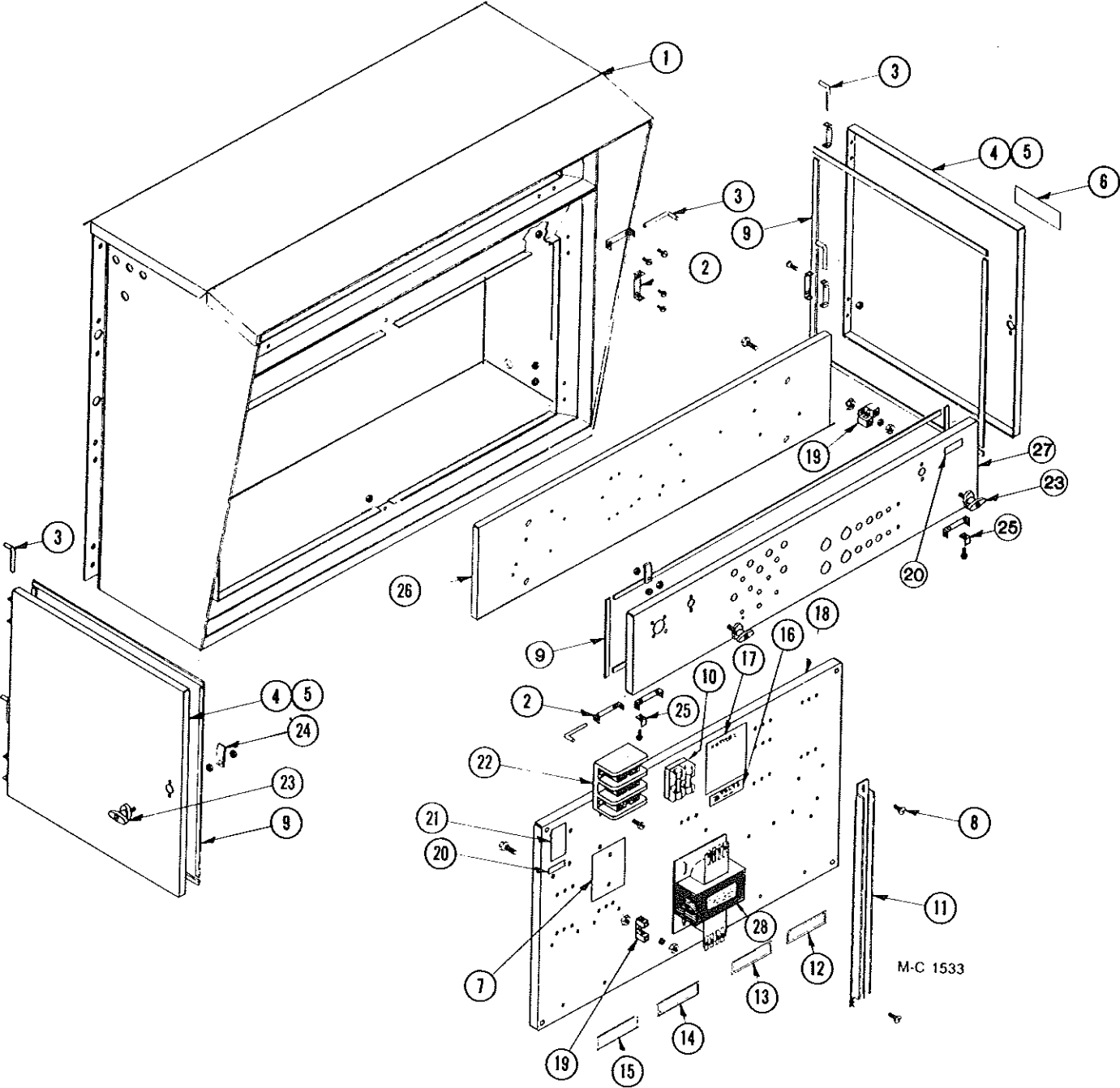


## Control Panel Lights, Switches and Controls



Ref.	Part No.	Description
1	121 6808	125V Indicator Lamp Ass'y. (Incl. lamp & lens)
	122 6810	125V Indicator Lamp
	122 6800	Indicator Lamp Lens (Clear)
2	120 6827	OFF-ON-ON Momentary Contact Toggle Switch
3	121 6807	ON-Off-ON Toggle Switch DPDT
4	128 8365	115V Control Bezel
5	124 6939	Moisture Control Potentiometer w/.Wires
	124 6941	Knob
6	121 6807	ON-OFF-ON Toggle Switch DPDT
7	124 6848	8 Amp. Circuit Breaker (SCR Drive)
8	124 1089	SCR Drive Potentiometer (10 turn w/ wire)
	124 6892	Multi-Dial
9	128 6845	Stop Button - Red
10	128 8358	Fan Control Bezel
11	128 6844	Start Button - Green
12	121 6815	ON-OFF Toggle Switch (SPST)
13	122 6814	Ignition Reset (0.1 Amp.)
14	124 6938	Fuse Holder
	124 6937	1 Amp. Fuse Slo-Blow

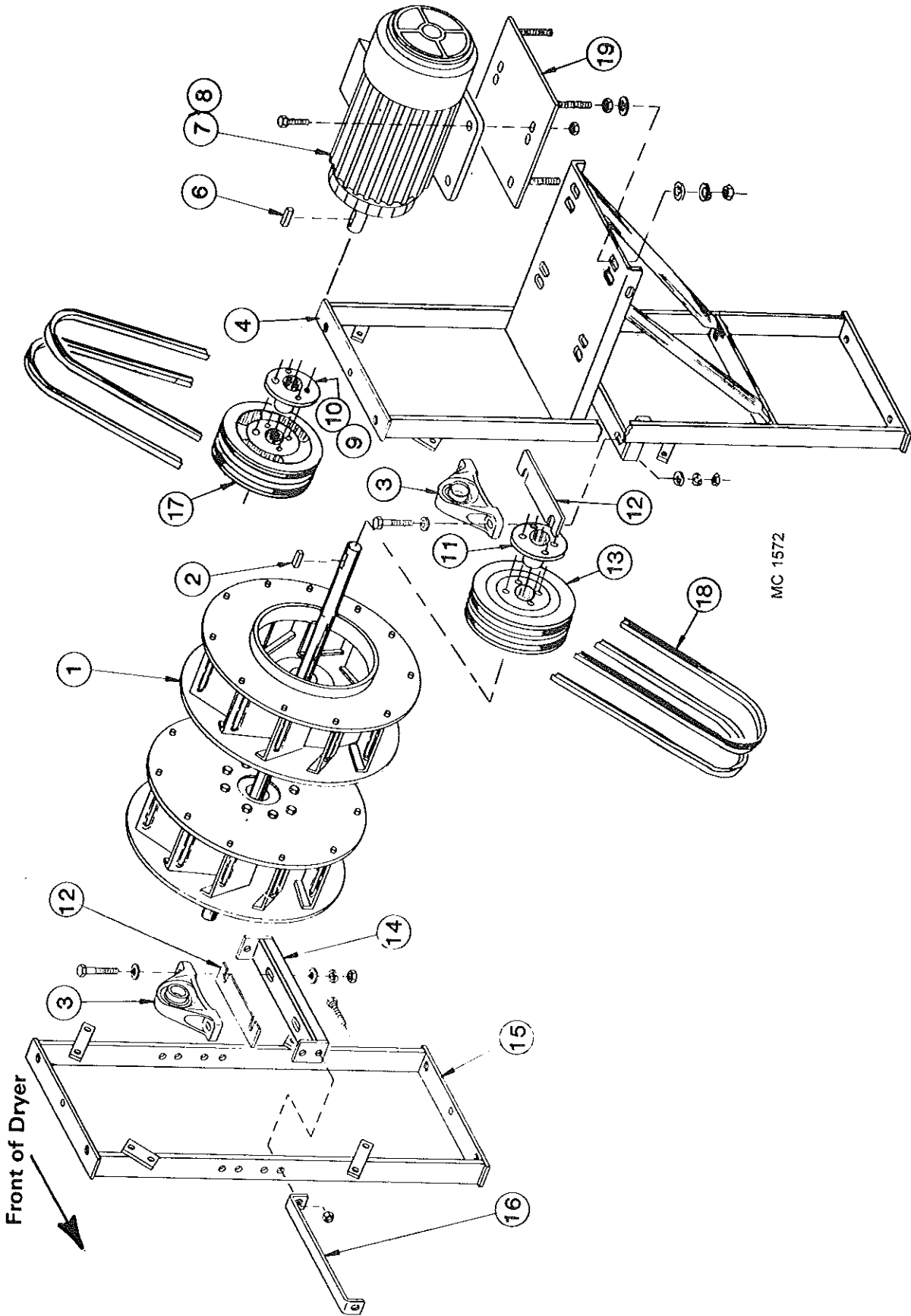
# Motor Control Cabinet



## Motor Control Cabinet

Ref.	Part No.	Qty.	Description
1	128 0306	1	Motor Control Cabinet Weld.
2	128 2740	12	Door Hinge
3	128 5201	6	Hinge Pin
4	128 1329	2	Door Ass'y - Left & Right (Incl. ref. 2, 5 & 9)
5	128 4844	2	Door - Left & Right
6	121 8316	1	Dryer Warning Decal
7	128 5789	2	Insulator Sheet (460V - 575V)
8	000 8103	2	5/16-18 x 1/2" Truss Hd. Screw
	000 8169	2	5/16-18 Flanged Locknut
9	121 8966	-	Weather Stripping 1/4" x 3/4" (Specify ft. required)
10	121 6988	2	Fuse Holder - 460V & 575V
	203 6801	1	Dougle Fuse Block - 200/208V
11	128 4843	1	Door Jamb
12	121 8325	1	Upper Heat Fan Decal
13	121 8313	1	Heat Fan Decal
	121 8312	1	Cool Fan Decal
14	128 8335	1	Unload Auger Decal
15	121 8351	1	Level Auger Decal
16	123 8339	1	208 Volts Decal
	123 8336	1	230 Volts Decal
	123 8337	1	460 Volts Decal
	128 8338	1	575 Volts Decal
17	121 8315	1	Notice, Warranty Decal
18	124 4448	1	Component Mounting Panel
19	125 6918	2	Grounding Lug
20	128 8349	2	Ground Decal
21	128 8318	1	Splitter Block Voltage Decal
22	128 6957	1	Splitter Block - 1 & 3 Phase
23	124 1021	4	Door "T" Handle Ass'y (Incl. ref. 24 cam, keys and mtg. hdwe.) Lever type handle no longer available.
	128 8946	4	Door "T" Handle w/Keys (Less ref. 24 cam)
	122 8900	4	Door "T" Handle Key
24	128 3425	4	Door Latch Cam
25	128 2741	2	Stop Brqcket
26	124 4806	1	Component Mounting Board
27	124 4842	1	Control Door 1-Burner
	124 1021	2	Door "T" Handle Ass'y
28	127 6829	1	Transformer (750VA)

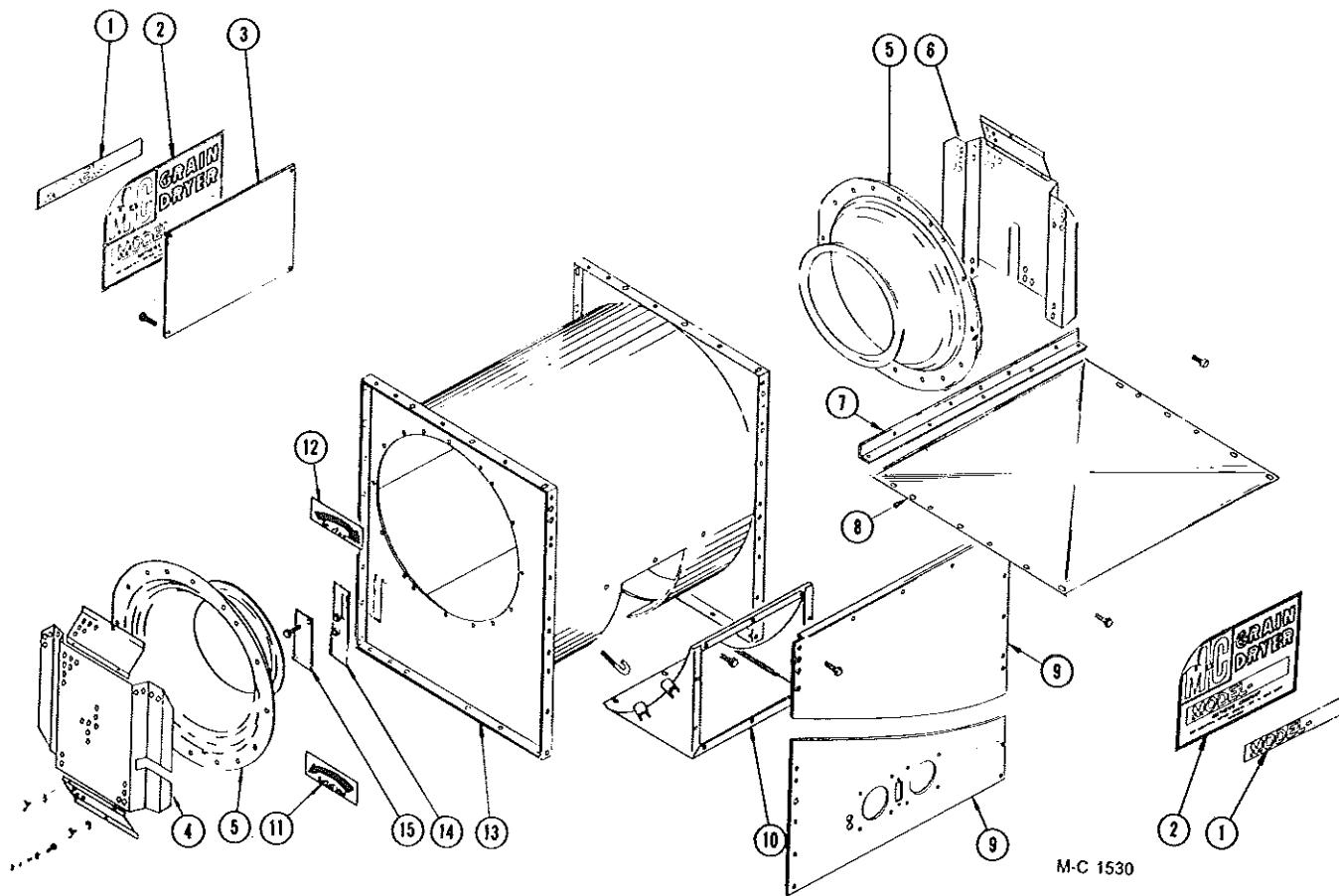
# Belt Drive Fans (Model 370 & 570C)



## Belt Drive Fans (Model 370 & 570C)

Ref.	Part No.	Qty.	Description	Ref.	Part No.	Qty.	Description
1	-----	-	Centrifugal Fan	15	128 0091	1	Fan Bearing Support
	124 1207	1	10HP BEM 50Hz Upper Fan		000 8121	8	3/8-16 x 1" Hex Bolt
	124 1206	1	20HP BEM 50Hz Upper Fan		000 8168	8	3/8-16 Flanged Locknut
2	001 5150	1	Key - 1/2" x 3/8" x 2"		000 8135	4	1/2-13 x 1" Hex Bolt Grade 5
3	128 6022	2	Pillow Block Bearing 2-3/16" I.D.		000 8170	4	1/2-13 Flanged Locknut
4	128 0335	1	Motor Support Belt Drive	16	128 3452	1	Bearing Mount Stiffener
6	001 5124	1	Key - 5/16" x 2 3/8" 10HP		001 8209	1	3/8-16 x 1" Hex Bolt
	001 5139	1	Key - 9/8" x 3" 20HP		000 8168	1	3/8-16 Flanged Locknut
7	124 6963	1	10HP Motor (Uni-Mount)		000 8139	1	1/2-13 x 1 3/4" Hex Bolt
8	124 6946	1	20HP Motor (Uni-Mount)		000 8170	1	1/2-13 Flanged Locknut
9	121 6239	1	1 3/8" SK Bushing w/35CW 10HP	17	127 6207	1	2/5V/10.3 SK Sheave (Motor)
10	121 6229	1	1 5/8" SK Bushing w/35CW 20HP	18	128 6602	1	BX50 Belt (Set of 2)
11	128 6228	1	2-3/16" SK DSG w/Std. Kwy.	19	128 0167	1	Motor Mount 10HP
12	128 2849	AR	Bearing Shim 16 Gauge		121 0343	1	Motor Mount 20HP
	128 2849	AR	Bearing Shim 11 Gauge	20	124 4213	1	Motor Mount Brace
13	127 6206	1	2/5V/8.5 SK Sheave (Fan)		001 8209	2	3/8-16 x 1" Hex Bolt
14	128 0098	1	Bearing Support		000 8168	2	3/8-16 Flanged Locknut
	000 8138	3	1/2-13 x 1 1/2" Hex Bolt				
	000 8139	1	1/2-13 x 1 3/4" Hex Bolt				
	000 8170	4	1/2-13 Flanged Locknut				

## Fan Housing

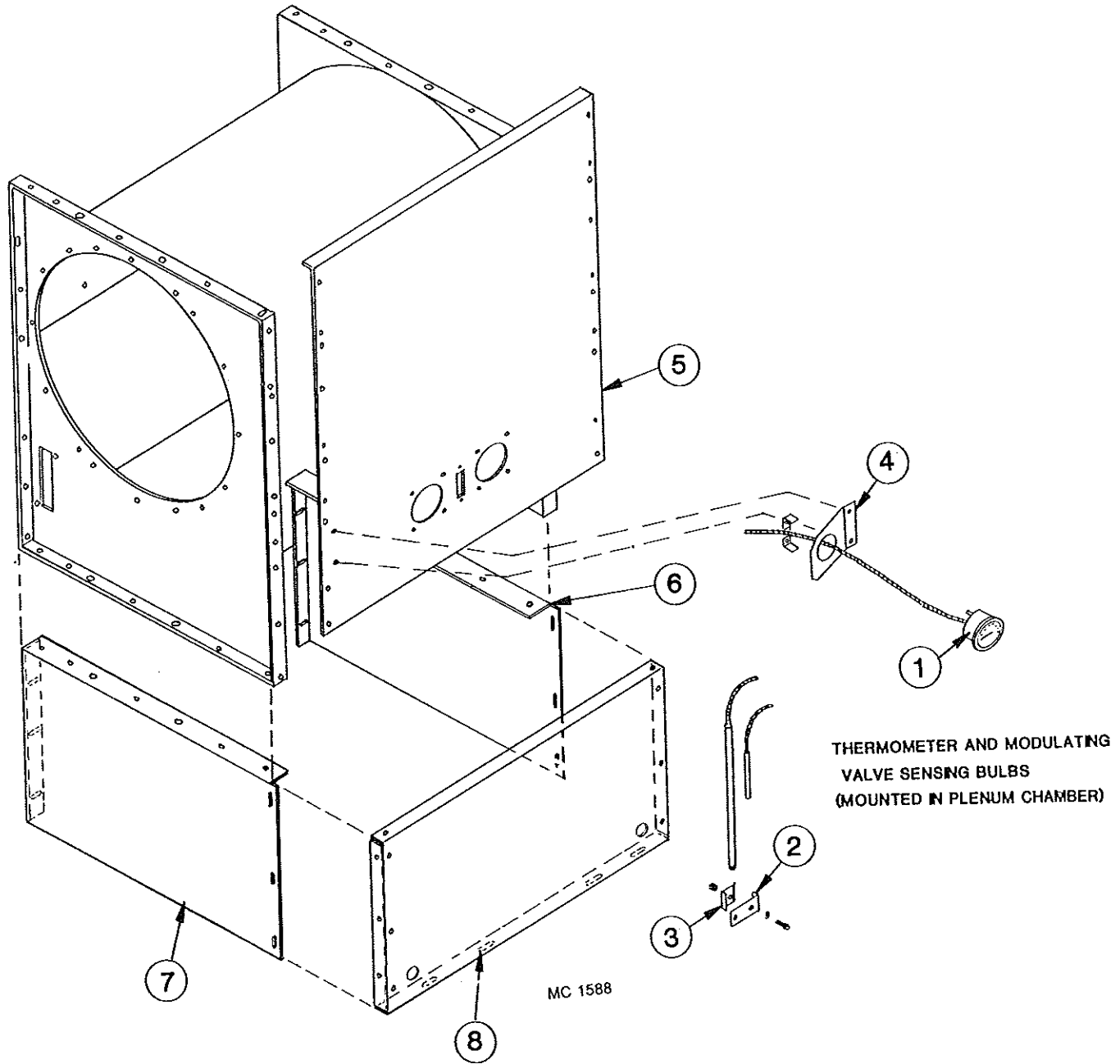


Ref.	Part No.	Qty.	Description
1	-----	-	Dryer Model Decal
	128 8373	-	370
	128 8375	-	570
2	128 8331	2	Large Decal - Model 975 (See Note 1)
3	128 2999	1	Decal Mount Plate (at rear of dryer)
4	122 9007	1	Full Fan Guard Kit
5	128 5724	2	Air Intake Spinning
	001 8202	9	5/16-18 x 3/4" Hex Washer Head Bolt
	000 8109	9	5/16-18 x 1 1/4" Capscrew
	000 8173	9	5/16" Flatwasher
	000 8169	18	5/16-18 Flanged Locknut

Ref.	Part No.	Qty.	Description
6	124 4774	1	Fan Guard Top
7	128 2757	1	Fan Housing Support
8	124 4834	1	Fan Housing Top Cover
9	128 0302	1	Front Panel
10	128 0142	1	Burner Transition
	120 8130	4	3/8-16 x 2" "J" Bolt
	001 8210	3	3/8-16 x 3/4" Hex Bolt
	000 8168	7	3/8-16 Flanged Locknut
11	121 8301	1	Counterclockwise Arrow Decal
12	128 8322	1	Clockwise Arrow Decal
13	128 0127	1	Centrifugal Fan Housing
14	128 0086	1	Vaporizer Mount Plate (LP)
15	128 4940	1	Vaporizer Hole Cover (Nat.Gas)

**NOTE 1:** This decal is imprinted "Model 975."  
For other models, order one of 128 8331 and one  
of Ref. 1 to be placed over "Model 975."

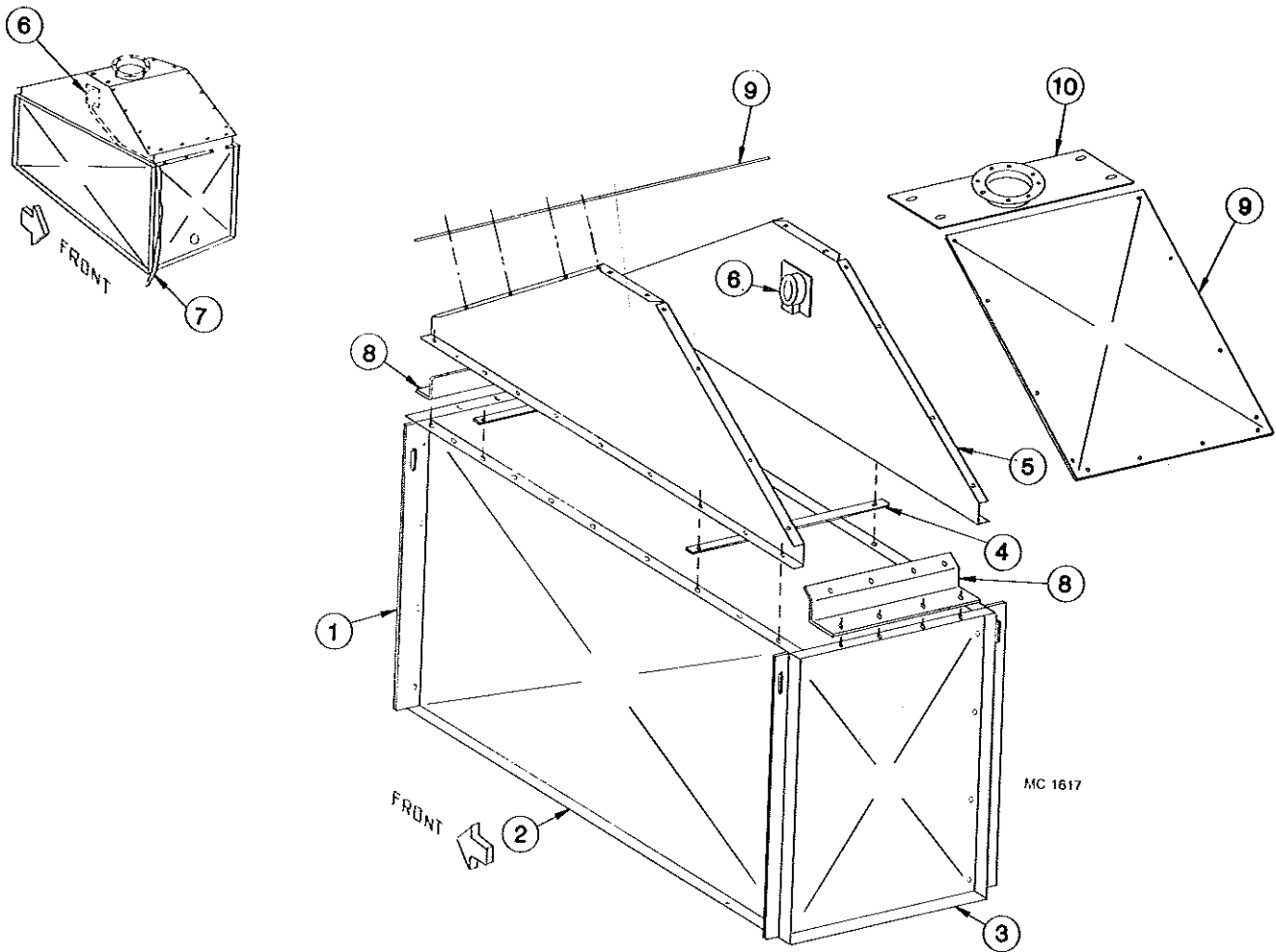
# Fan Housing



Ref.	Part No.	Qty.	Description
1	128 8983	-	Thermometer - 15' Capillary (Mounting Bracket included)
2	121 2883	1	Thermometer Sensing Bulb Bracket
3	121 2882	1	Thermometer Sensing Bulb Clip
4	124 4824	1	Thermometer Mount Plate (Single)
5	128 0302	1	Front Panel
6	124 4460	1	Fan Housing Support - Right
7	124 4459	1	Fan Housing Support - Left
8	124 4464	1	Fan Housing Support Panel

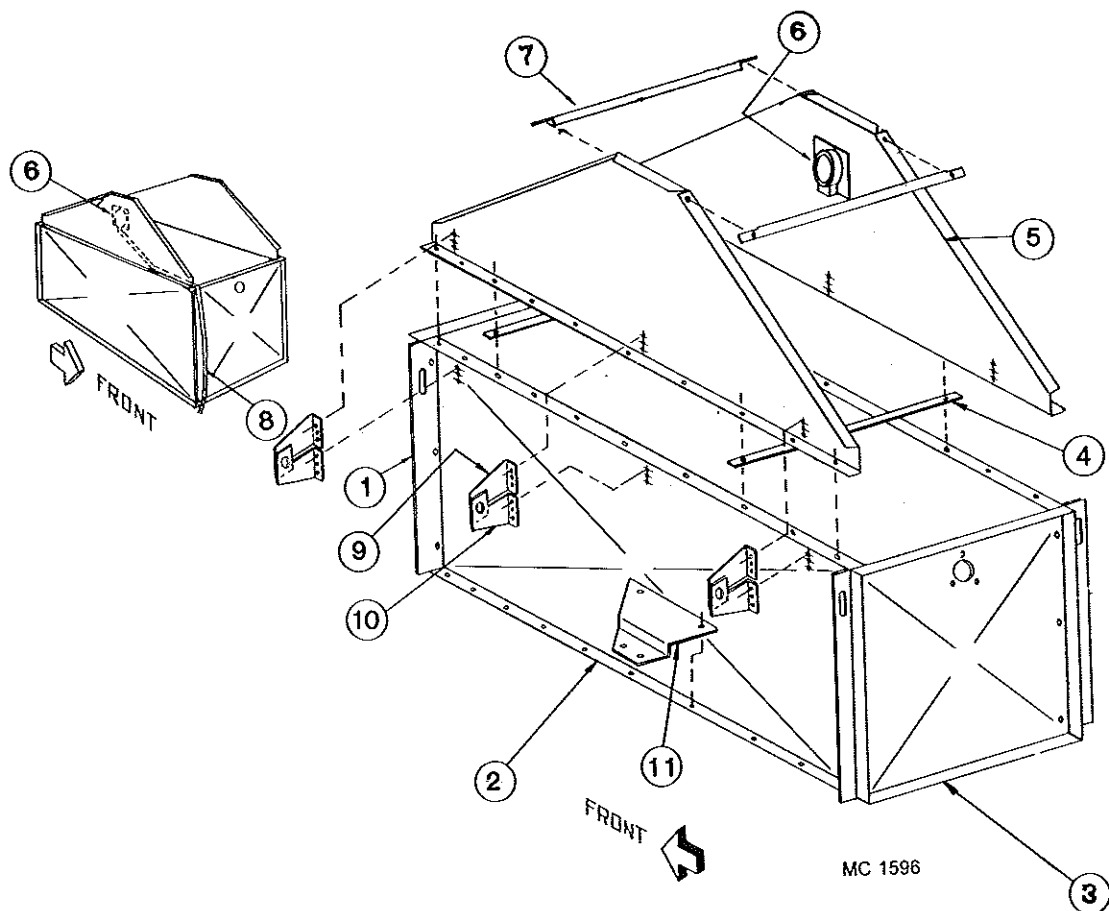


# 370C HOPPER AND HOPPER EXTENSION



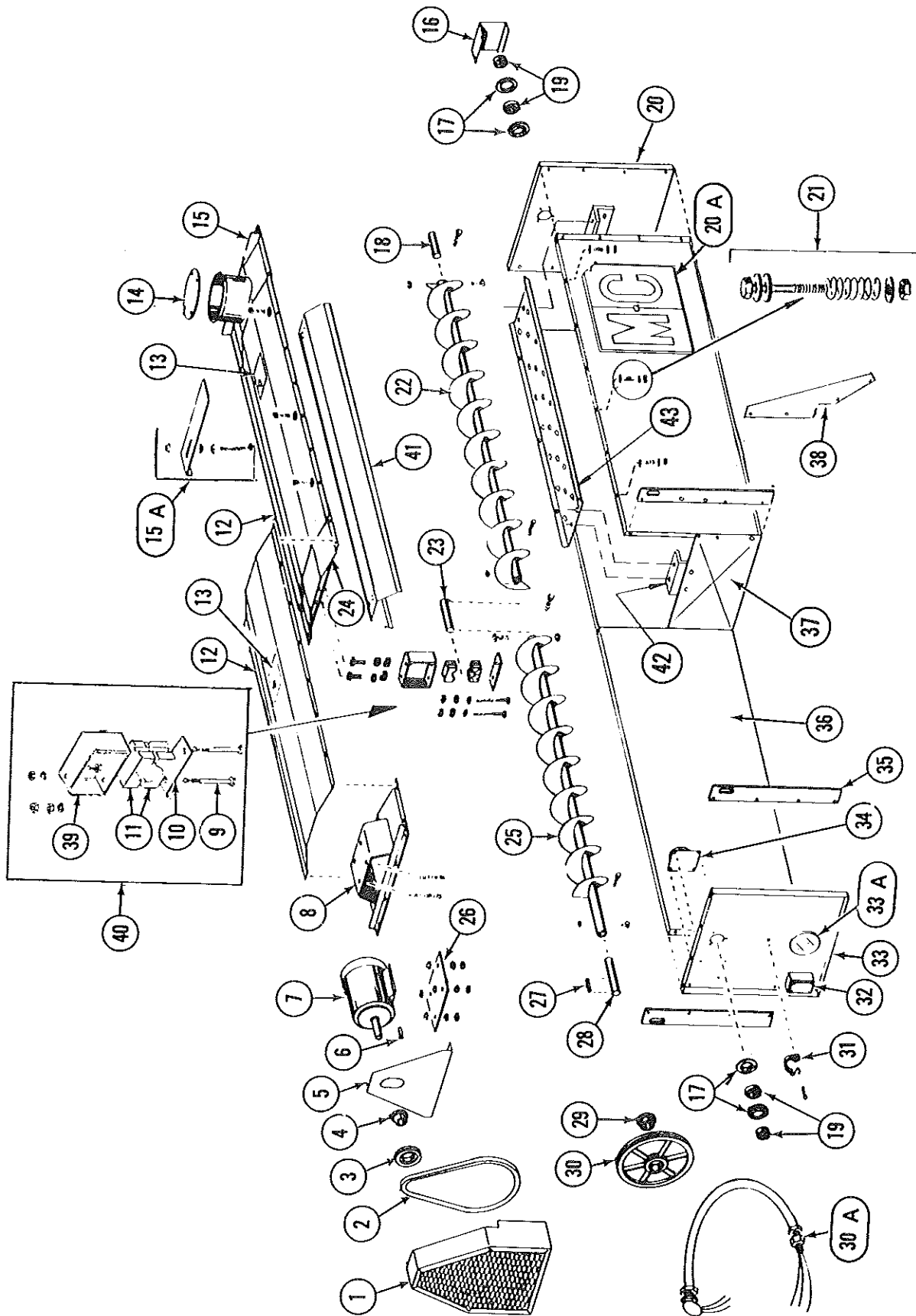
Ref.	Part No.	Qty.	Description
1	128 3412	4	Lifting Bar
2	129 2843	2	Hopper Side
3	129 4950	1	Rear Hopper End Panel
4	129 2948	2	Cross Strap
5	124 4777	2	Hopper Extension
6	128 6992	1	Bin Level Indicator
7	129 4951	1	Front Hopper End Panel
8	124 4776	2	Hopper Extension End Angle
9	124 4775	2	Hopper Extension Top
10	128 0336	1	Grain Receiving Inlet

# 370C HOPPER WITH FOLD DOWN TOP EXTENSIONS



Ref.	Part No.	Qty.	Description
1	128 3242	4	Lifting Bar
2	129 2844	2	Hopper Side
3	129 2842	1	Rear Hopper End Panel
4	129 2948	2	Cross Strap
5	129 2845	2	Hopper Extension - Fold Down
6	128 6992	1	Bin Level Indicator
7	124 4458	2	Hopper Extension Angle
8	129 2841	1	Front Hopper End Panel
9	129 2618	6	Hopper Extension Hinge (Upper)
10	129 2617	6	Hopper Extension Hinge (Lower)
11	129 2716	2	Extension Transport Bracket

# 570 HOPPER AND LEVEL AUGER

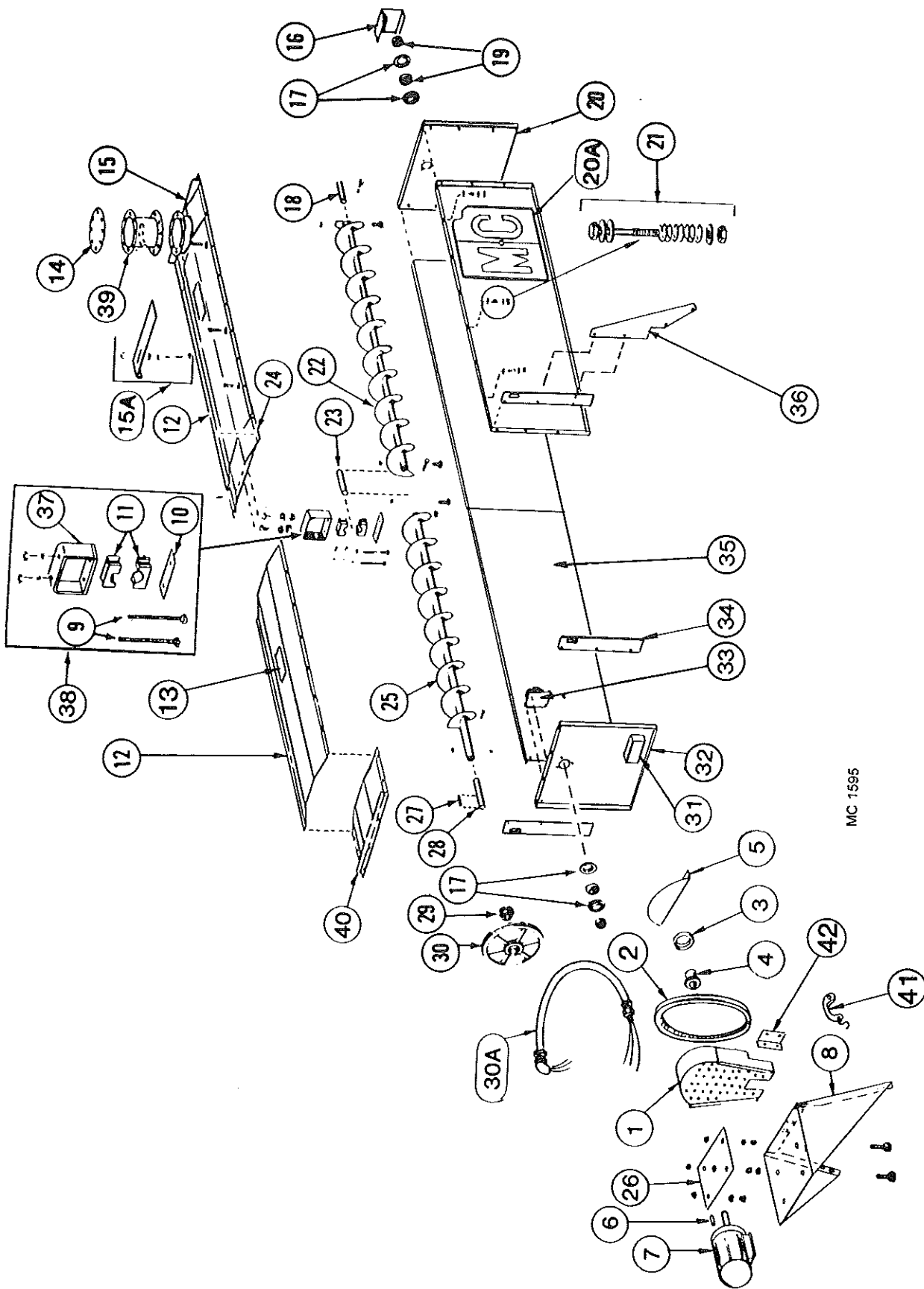


MC 1573

# 570C HOPPER AND LEVEL AUGER

Ref.	Part No.	Qty.	Description	Ref.	Part No.	Qty.	Description
1	129 0003	1	Level Auger Guard	22	128 0122	1	Level Auger (93 1/2" RH flighting)
2	128 6103	1	Level Auger Belt	23	128 5050	1	Level Auger Center Shaft (1 1/4" x 10 1/4")
3	-----	-	2/3V/710 (banded belt) or 128 6104 in matched set of two	24	129 0000	1	Level Auger Support
	128 6207	1	Level Auger Motor Sheave "SH"	25	128 0317	1	Level Auger (82 3/8" RH flighting)
	128 6220	1	Level Auger Motor Sheave "SH"	26	129 4202	1	Level Auger Motor Mt. Plate
4	128 6214	1	3V/3.65 x 2 Groove 60 Cycle		000 8161	4	1/2-13 x 3 1/2" Capscrew (Full thread)
			3V/4.50 x 2 Groove 50 Cycle		000 8170	4	1/2-13 Flanged Locknut
			Level Auger Motor Bushing - 1 1/8" SH		000 8163	8	1/2-13 Hex Nut
			Bushing for 3HP & 5HP motor	27	001 5120	1	Key - 1/4" x 1 1/2"
			(Incl. capscrews & lockwashers)	28	128 5051	1	Level Auger Front Shaft (1 1/4" x 10")
5	129 4944	1	Level Auger Guard Back	29	121 6241	1	1 1/4" SK Bushing (Incl. capscrews & lockwashers)
6	001 5112	1	Key - 3/16" x 1 1/8" (1.5HP motor)	30	128 6208	-	Level Auger Sheave "SK" 3V/19.0 x 2 Grv.
	001 5114	1	Key - 3/16" x 1 1/8" (2HP motor)	30A	128 1960	1	Flexible Conduit w/Wires
	001 5119	-	Key - 1/4" x 2" (3HP motor)	31	128 8951	1	Rubber Strap w/Hook
7	128 6818	1	230/460V 3HP 3Ø Motor	32	128 6922	1	Slatter Box (1/2")
8	129 0001	1	Level Auger Motor Mt.	33	129 2835	1	Upper End Panel - Front
9	001 8287	2	3/8-16 x 3 3/4" Capscrew - Grd. 5	33A	129 5702	1	Port View Lens
	001 8139	2	3/8" Lockwasher	34	128 6992	1	Bin Level Indicator (See pg. 31)
	000 8162	8	3/8-16 Hex Nut	35	129 3412	4	Lifting Bar
10	128 3415	2	Bearing Hanger Bar	36	129 2836	4	Hopper Side
11	128 6021	1	Wood Bearing - 1 1/4" (2 halves)	37	129 2715	1	Hopper Sectional Panel
12	129 2945	2	Hopper Cover - Front & Rear (76")	38	129 2603	6	Hopper Brace
13	128 8355	2	Warning Decal	39	128 0292	1	Level Auger Brg. Support
14	129 4204	1	Receiving Tube Cover		001 8135	2	3/8-16 x 1" Capscrew - Grd. 5
15	129 0002	1	Receiving Hopper		001 8139	2	3/8" Lockwasher
15A	129 4205	1	Flow Restrictor		000 8162	2	3/8-16 Hex Nut
	129 5703	1	Position & Locking Bolt	40	122 1008	1	Level Auger Brg. Kit (Incl. Ref. 9, 10, 11, & 39 in quantities reqd. for one brg.)
	000 8168	3	3/8-16 Flanged Locknut	41	129 2838	1	Auger Cover Short
16	129 4947	1	Stub Guard	42	128 2760	2	Auger Pan Support Bracket
17	001 6004	4	Bearing Flangette 1 1/4"	43	128 2761	1	Pan Under Auger
18	128 5052	1	Level Auger Rear Shaft (1 1/4" x 8")				
19	001 6003	2	Bearing w/Lock Collar - 1 1/4"				
20	129 2834	1	Upper End Panel - Rear				
20A	121 8343	2	M-C Decal (26 1/2" x 23")				
21	000 8101	12	1/4-20 x 2" Capscrew				
	131 8708	12	Spring (5/8" OD x 1 3/4")				
	000 8172	36	1/4" Flatwasher				
	000 8210	12	1/4-20 Two-Way Locknut				

# 570C SHORT HOPPER ASSEMBLY AND LEVEL AUGER

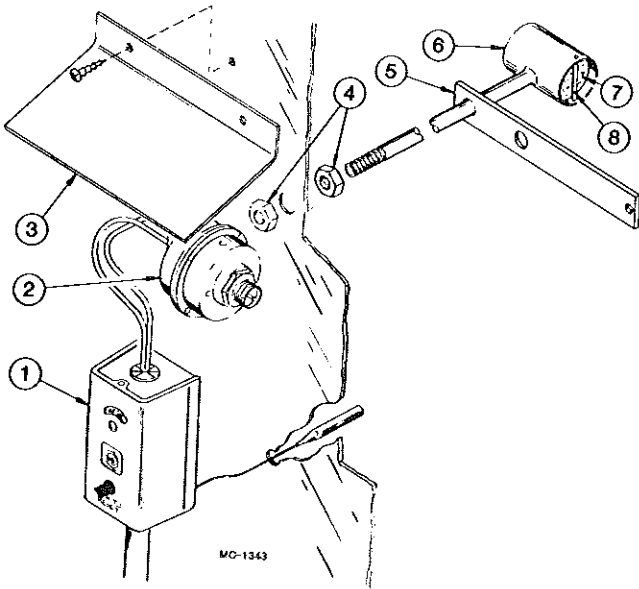


MC 1595

## 570C SHORT HOPPER ASSEMBLY AND LEVEL AUGER

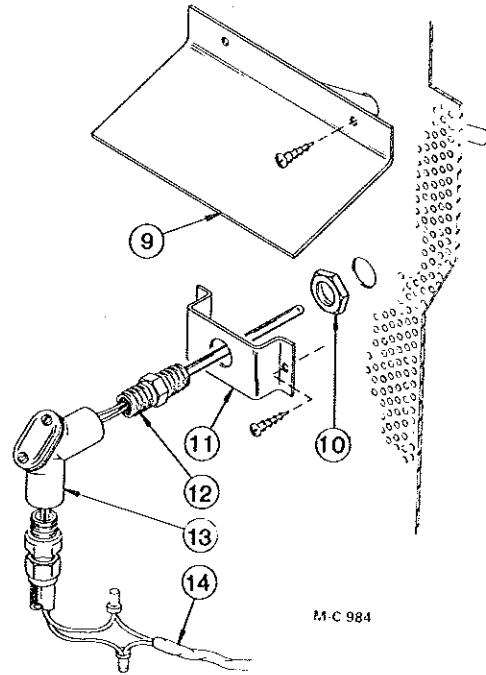
Ref.	Part No.	Qty.	Description	Ref.	Part No.	Qty.	Description
1	128 0339	1	Level Auger Belt Guard	22	128 0122	1	Level Auger Rear (93½" RH flighting)
2	128 6103	1	2/3V/710 (banded belt) or 128 6104 in matched set of two	23	128 5050	1	Level Auger Center Shaft (1¼" x 10¼")
3	128 6207	1	3V/3.65 x 2 Groove 60 cycle	24	129 0000	1	Level Auger Support
	128 6220	1	3V/4.5 x 2 Groove 50 cycle	25	128 0317	1	Level Auger Front (82½" RH flighting)
4	128 6214	1	1½" SH Bushing - for 3HP & 5HP motor (Incl. capscrews & lockwashers)		001 8137	8	¾-16 x 2" Capscrew - Grd. 5
					001 8149	8	¾-16 Two-Way Locknut
5	129 4952	1	Level Auger Belt Guard Back Plate	26	129 4202	1	Level Auger Motor Mount Plate
6	001 5119	1	Key-¼" x 2" (3HP motor)		000 8161	4	½-13 x 3½" Capscrew (Full thread)
7	128 6818	1	230/460V 3HP 3Ø Motor		000 8170	4	½-13 Flanged Locknut
8	128 3241	1	Level Auger Motor Mount		000 8163	8	½-13 Hex Nut
9	001 8287	2	¾-16 x 3¾" Capscrew - Grd. 5	27	001 5120	1	Key-¼" x 1½"
	001 8139	2	¾" Lockwasher	28	128 5051	1	Level Auger Front Shaft (1¼" x 10")
	000 8162	8	¾-16 Hex Nut	29	121 6241	1	1¼" SK Bushing (Incl. capscrews & lockwashers)
10	128 3415	2	Bearing Hanger Bar	30	128 6208	1	3V/19.0 x 2 Groove
11	128 6021	1	Wood Bearing - 1¼" (2 halves)	30A	128 1960	1	Flexible Conduit w/Wires - Lvl. Aug. Motor
12	129 2945	2	Hopper Cover - Front & Rear (76")	31	128 6922	1	Slatter Box (½")
13	128 8355	2	Warning Decal	32	129 2841	1	Hopper End Panel - Front
14	129 4204	1	Receiving Tube Cover	33	128 6992	1	Bin Level Indicator (See pg. 34)
15	128 0338	1	Receiving Hopper	34	128 3242	4	Lifting Bar
15A	129 4205	1	Flow Restrictor	35	129 2843	4	Hopper Side
	129 5703	1	Position & Locking Bolt	36	129 2603	6	Hopper Brace
	000 8168	3	¾-16 Flanged Locknut	37	128 0292	1	Level Auger Bearing Support
16	129 4947	1	Stub Guard		001 8209	2	¾-16 x 1" Hex Washer Head Bolt
17	001 6004	4	Bearing Flangette 1¼"		001 8139	2	¾ Lockwasher
18	128 5052	1	Level Auger Rear Shaft (1¼" x 8")		000 8162	2	¾-16 Hex Nut
19	001 6003	2	Bearing w/Lock Collar - 1¼"	38	122 1008	1	Level Auger Bearing Kit (Incl. ref. 9, 10, 11 & 37 in quantities required for one bearing)
20	129 2842	1	Hopper End Panel - Rear	39	128 0337	1	Grain Receiving Tube
20A	001 8302	2	M-C Decal (8" x 8¼")	40	129 0006	1	Level Auger End Support
21	000 8101	12	¼-20 x 2" Capscrew	41	128 8951	2	Rubber Strap w/Hook
	131 8708	12	Spring (⅝" OD x 1 ¾")	42	129 4776	2	Belt Guard Bottom Side
	000 8172	36	¼" Flatwasher				
	000 8210	12	¼-20 Two-Way Locknut				

## Moisture Control, Air Pressure and High Limit Switches



**Air Pressure and High Limit Switches**

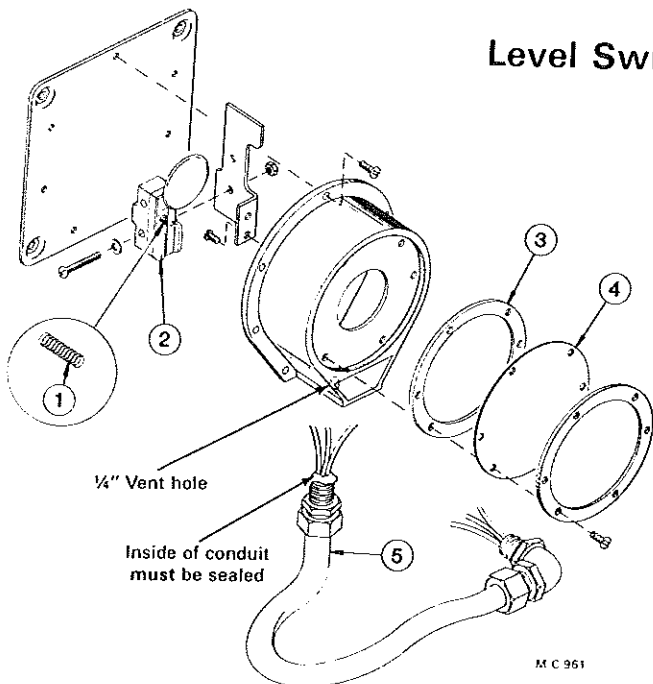
Ref.	Part No.	Description
1	124 6934	High Limit Switch - Adjustable-Manual Reset
2	121 6849	Air Pressure Switch
3	121 2946	High Limit Switch Cover
4	121 8000	Pipe Locknut - 1/4"
5	121 2007	Air Pressure Tube Brkt.
6	121 0169	Air Pressure Tube
7	121 5716	Air Pressure Tube Filter
8	-----	Filter Retainer (Wire)



**Moisture Control Probe**

Ref.	Part No.	Description
9	121 0031	Moisture Control Shield
10	121 6915	Locknut - 1/2"
11	128 3007	Bracket
12	124 6893	Thermistor Sensor (Probe)
13	123 8089	1/2" Handy EII
14	125 6908	18/2 PVC Cord w/Shield

## Level Switch Assembly



Ref.	Part No.	Qty.	Description
—	128 6992	1	Bin Level Indicator (Less ref. 5)
1	122 6847	1	Spring
2	122 6848	1	Microswitch Ass'y.
3	122 6850	1	Gasket
4	122 6849	1	Diaphragm (Teflon)
5	128 1995	1	Level Switch Wire Ass'y.

## DRYER MOTORS, CIRCUIT BREAKERS AND MAGNETIC STARTERS

MOTOR			CIRCUIT BREAKER			MAGNETIC STARTER			
HP	*FLA	Part No.	Part No.	Amps	Square "D" No.	Starter Part No.	Square "D" No.	Thermal Unit Part No.	Thermal Unit Size
<b>380V - 3 PHASE - 50 HZ</b>									
‡1.5	2.9	127 6860	128 6931	15	FAL 36015	124 6931	DPS033	128 6951	B 6.25
**1.5	2.9	123 6876	128 6931	15	FAL 36015	124 6931	DPS033	128 6951	B 6.25
2	3.7	121 6861	128 6931	15	FAL 36015	124 6931	DPS033	120 6845	B 6.90
**2	3.7	124 6867	128 6931	15	FAL 36015	124 6931	DPS033	120 6845	B 6.90
3	5.2	128 6818	128 6931	15	FAL 36015	124 6931	DPS033	128 6947	B 9.10
5	8.0	128 6815	128 6931	15	FAL 36015	124 6931	DPS033	128 6863	B 11.5
10	16.2	124 6963	125 6928	30	FAL 36030	124 6931	DPS033	120 6855	B 25
15	23.7	124 6945	128 6937	60	FAL 36060	124 6930	DPS053	128 6946	B 36
20	32.1	124 6926	124 6905	70	FAL 36070	124 6930	DPS053	128 6949	B 45
<b>415V - 3 PHASE - 50 HZ</b>									
‡1.5	2.5	127 6860	128 6931	15	FAL 36015	124 6931	DPS033	120 6848	B 3.70
2	3.5	121 6861	128 6931	15	FAL 36015	124 6931	DPS033	128 6948	B 4.15
3	5.2	128 6818	128 6931	15	FAL 36015	124 6931	DPS033	120 6845	B 6.90
5	7.6	128 6815	128 6931	15	FAL 36015	124 6931	DPS033	128 6863	B 11.5
10	14.9	124 6963	125 6928	30	FAL 36030	124 6931	DPS033	120 6855	B 25.0
15	22.4	124 6945	128 6930	40	FAL 36040	124 6930	DPS053	128 6946	B 36
20	28.2	124 6926	128 6937	60	FAL 36060	124 6930	DPS053	128 6949	B 40

\*If FLA (Full Load Amps) shown does not match FLA imprinted on motor name plate, refer to Square D charts for correct thermal unit size.

\*\* - "C" Face

‡ - 7/8" shaft

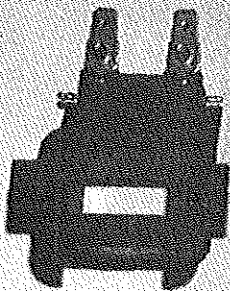


## 115V COILS AND INTERLOCKS

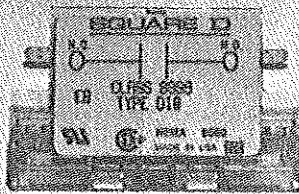
STARTER		COIL		INTERLOCK	
Sq. "D" No.	M-C No.	M-C No.	Sq. "D" No.	M-C No.	Sq. "D" No.
DPA73	124 1082	122 6861	9998-DA3V02	124 6933	9999-D-20
DPA93	124 1083	122 6861	9998-DA3V02	124 6933	9999-D-20
DPS053 (50) HZ	124 6930	122 6860	9998-DA1V02	124 6933	9999-D-20
DPS033 (50) HZ	124 6931	122 6860	9998-DA1V02	124 6933	9999-D-20
DPS033 (60) HZ	124 6931	122 6860	9998-DA1V02	124 6933	9999-D-20
DPS053 (60) HZ	124 6930	122 6860	9998-DA1V02	124 6933	9999-D-20

## JUMPER STRAP KITS AND CONTACT KITS

STARTER		JUMPER STRAP KIT (2 straps per kit)		CONTACT KIT	
Sq. "D" No.	M-C No.	M-C No.	Sq. "D" No.	M-C No.	Sq. "D" No.
DPA73	124 1082	124 6885	9998-S032	122 6863	9998-DRC7
DPA93	124 1083	124 6885	9998-S032	122 6864	9998-DRC9
DPS033 (50) HZ	124 6931	120 6841	9998-S031		
DPS053 (50) HZ	124 6930	120 6841	9998-S031	122 6862	9998-DRC5
DPS033 (60) HZ	124 6931	120 6841	9998-S031		
DPS053 (60) HZ	124 6930	120 6841	9998-S031	122 6862	9998-DRC5



Magnetic  
Coil



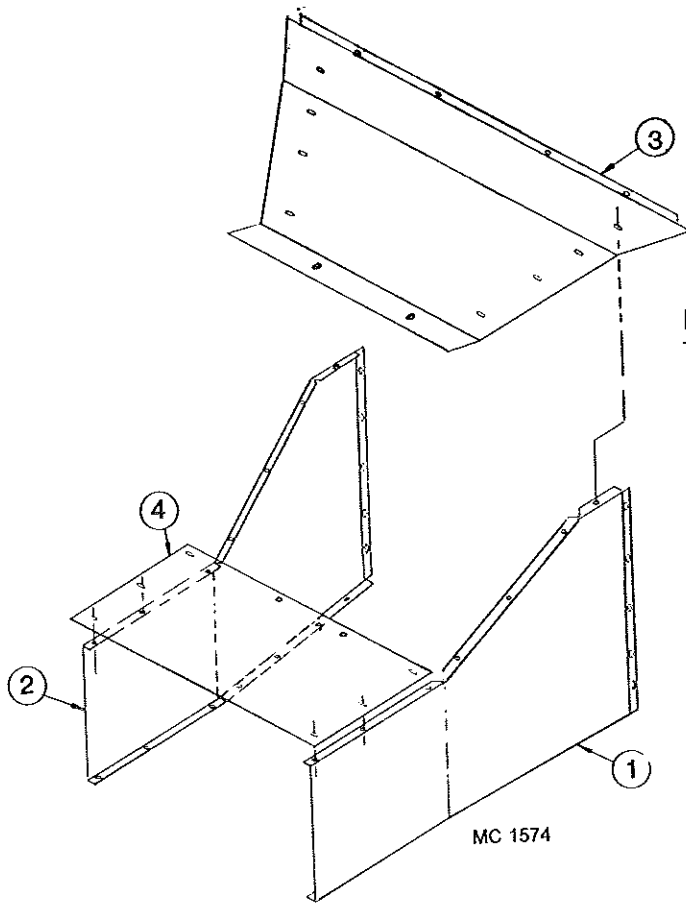
Interlock



Thermal  
Unit

M-C 1402

## 370C & 570C MIXING CHAMBER

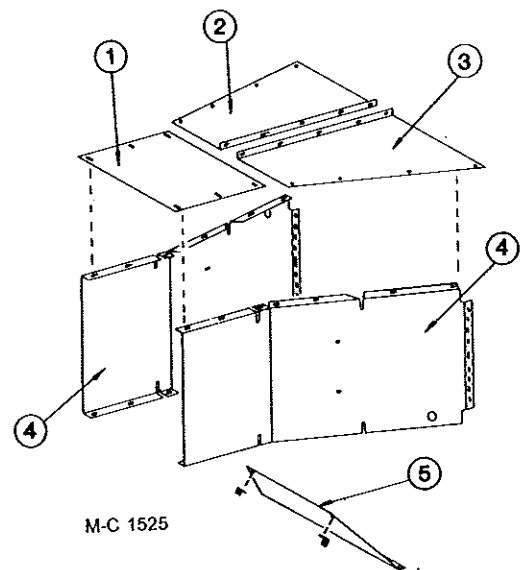


### 370C MIXING CHAMBER

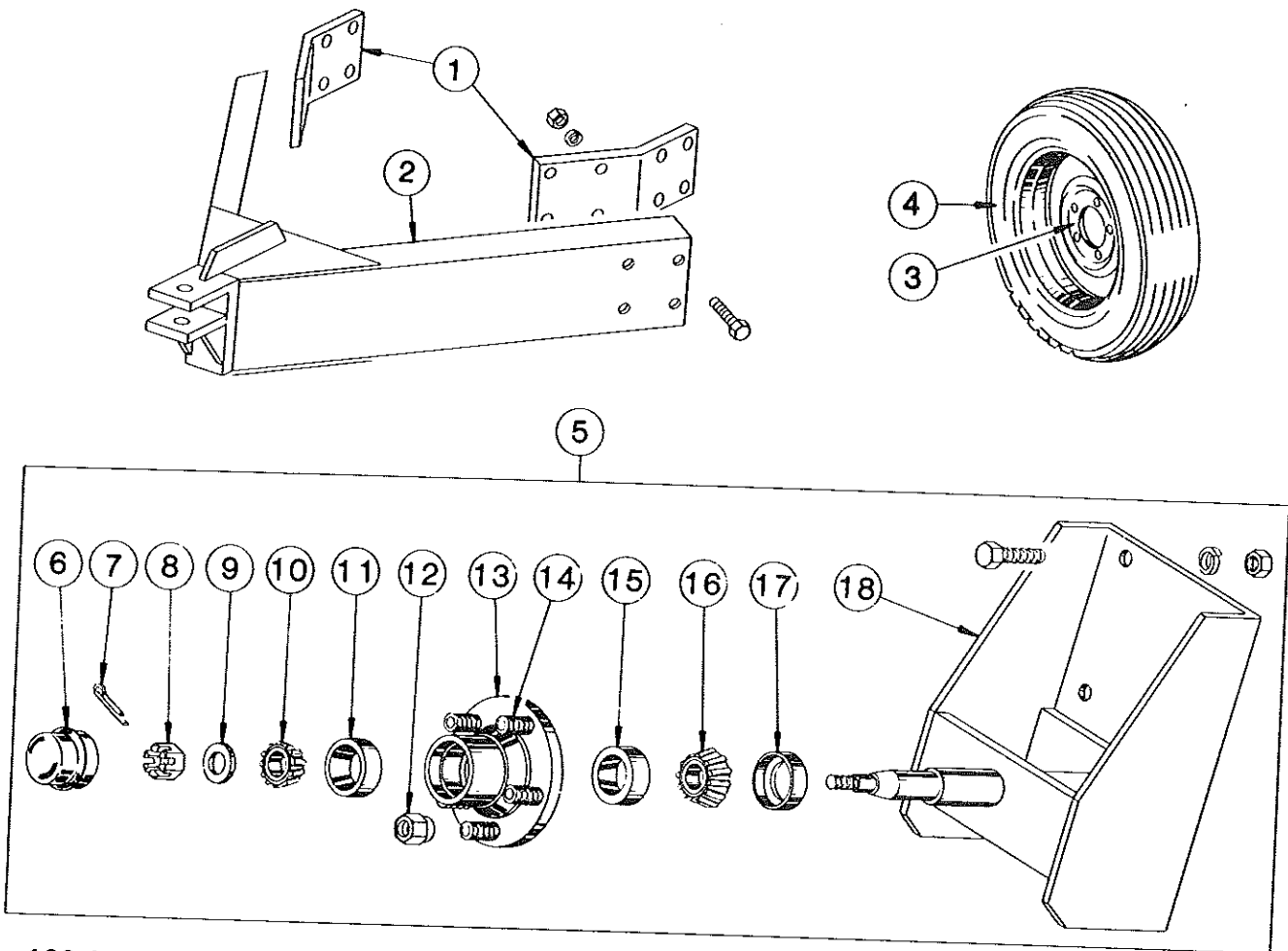
Ref.	Part No.	Qty.	Description
1	124 2863	1	Mixing Chamber Side Right
2	124 2862	1	Mixing Chamber Side Left
3	124 2867	1	Mixing Chamber Top
4	128 2915	1	Mixing Chamber Top End
	001 8202	42	5/16"-18 x 3/4" Washer Head Hex Bolt
	000 8169	42	5/16"-18 Flanged Locknut
	000 8184	10	8-18 x 1/2" Sheet Metal Screw

### 570C MIXING CHAMBER

Ref.	Part No.	Qty.	Description
1	128 2915	1	Chamber Top-End
2	128 2912	1	Chamber Top-Left
3	128 2911	1	Chamber Top-Right
4	128 2918	2	Chamber Side
5	128 2914	1	Chamber Deflector
6	001 3302	2	Universal Angle Clip
-	128 4942	13	Mixing Chamber Patch
-	001 8202	48	5/16-18 x 3/4" Washer Head Hex Bolt
-	000 8169	48	5/16-18 Flanged Locknut
-	000 8173	48	5/16" Flatwasher
-	000 8184	48	8-18 x 1/2" Sheet Metal Screw
-	128 6848	1	3/4" K.O. Bushing
-	128 6830	2	Hole Plug



## PORTABILITIES (Optional)

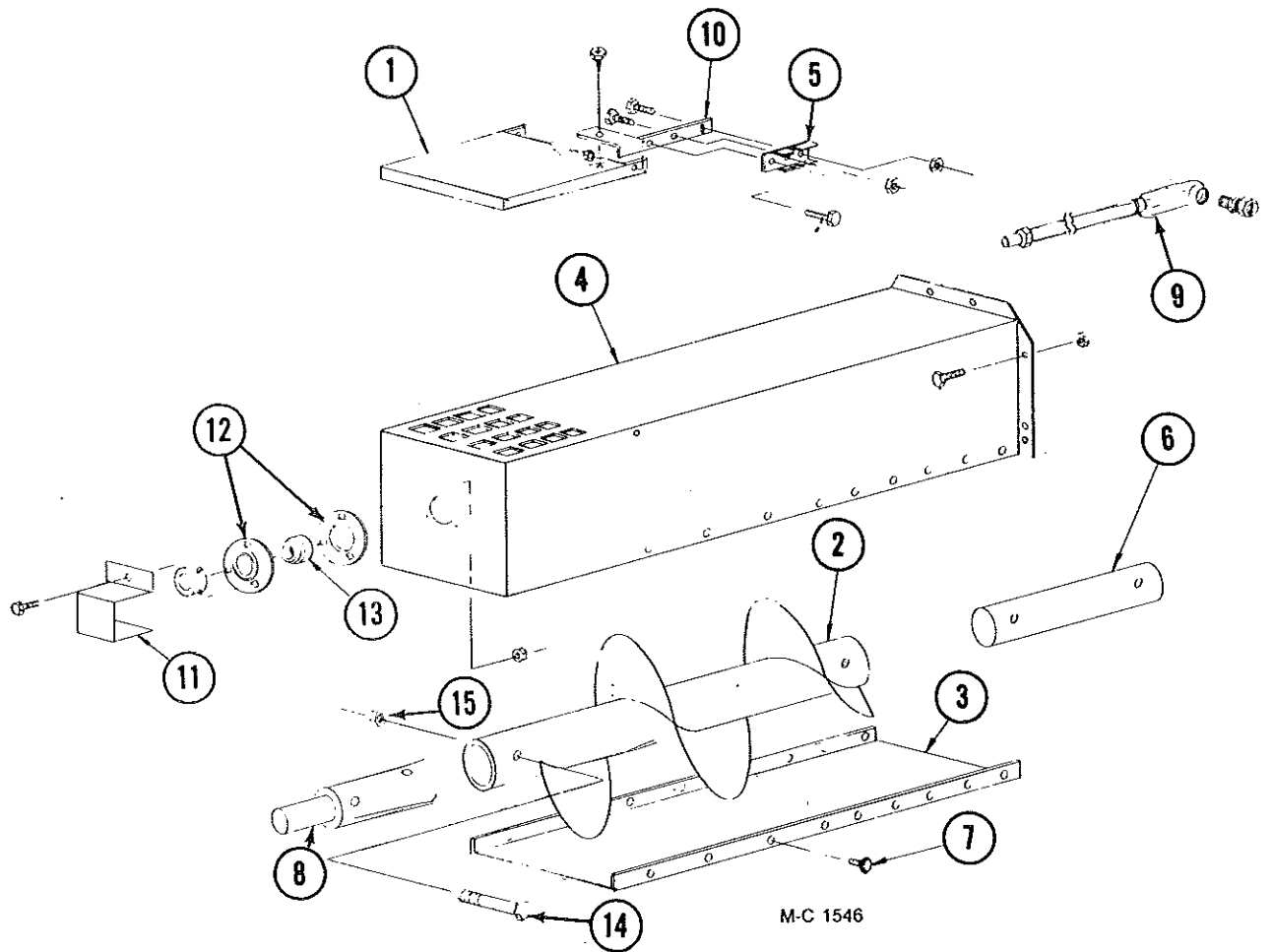


120 1030 - 4 Wheel Portabilities (Incl. Ref. 1 & 2 and four of Ref. 3 & 5 less tires)

M-C 980

Ref.	Part No.	Qty.	Description	Ref.	Part No.	Qty.	Description
1	128 3671	2	Pole Mount Brkt.	6	001 8996	1	Hub Cap
	128 8196	8	3/4-10 x 2 1/2" Capscrew - Grd.5	7	001 8252	1	Cotter Pin - 1/8" x 1"
	000 8182	8	3/4" Lockwasher	8	001 8253	1	Spindle Nut
	000 8165	8	3/4-10 Hex Nut	9	001 8254	1	Spindle Washer
2	120 0047	1	Dryer Pole	10	001 6000	1	Bearing Cone - Outer
	128 8195	8	3/4-10 x 2" Capscrew - Grd. 5	11	002 6000	1	Bearing Cup - Outer
	000 8182	8	3/4" Lockwasher	12	001 8989	5	1/2-20 Lug Nut - 45°
	000 8165	8	3/4-10 Hex Nut	13	001 8992	1	Wheel Hub Ass'y - 5 Bolt (Incl. Ref. 11, 14 & 15)
3	001 8993	1	5 Bolt Wheel - 15"	14	002 8152	5	1/2-20 x 1 1/2" Stud
4	127 8990	1	7.60 x 15-6 Ply Tubeless Tire	15	002 6001	1	Bearing Cup - Inner
5	120 1028	1	Wheel Spindle & Hub Ass'y (Incl. Ref. 6 thru 18)	16	001 6001	1	Bearing Cone - Inner
	000 8146	6	5/8-11 x 1 1/2" Capscrew - Grd.5	17	001 8991	1	Seal
	000 8181	6	5/8" Lockwasher	18	120 0031	1	Wheel Mount
	000 8164	6	5/8-11 Hex Nut				

**10" Unloading Auger Extension Kit (2') - 127 1229,  
(4') - 127 1230, and (6') - 127 1233**



M-C 1546

Ref.	Part No.	Qty.	Description	Ref.	Part No.	Qty.	Description
1	128 4712	1*	Over Load Door	7	001 8284	-	5/16-12 x 1/2" Tapping Bolt (Qty. - 8, 16 or 24)
2	128 0310	1	2' Extension Auger	8	124 5611	1*	U.A. Output Shaft
	128 0312	1	4' Extension Auger	9	127 1231	1	2' Extension Liquatite Assy.
	128 0315	1	6' Extension Auger		127 1232	1	4' Extension Liquatite Assy.
3	124 4465	1	2' Bottom Cover		127 1234	1	6' Extension Liquatite Assy.
	124 4466	1	4' Bottom Cover	10	128 2937	1*	Bulb Mount
	124 4471	1	6' Bottom Cover	11	128 3011	1*	Stub Shaft Guard
4	128 0311	1	2' Discharge Housing	12	001 6004	2*	1 1/4" Bearing Flangettes
	128 0313	1	4' Discharge Housing	13	001 6003	1*	1 1/4" Bearing w/Collar
	128 0314	1	6' Discharge Housing	14	000 8229	4	3/8"-16 x 2 3/4" HHCS Gr.5 ZP
5	120 6801	1*	Switch Mount Clip	15	000 8205	4	3/8-16 Flanged Locknut
6	128 5618	1*	Unload Auger Link				

\*Not included in kit when field installed.

# WALKWAY (Optional)

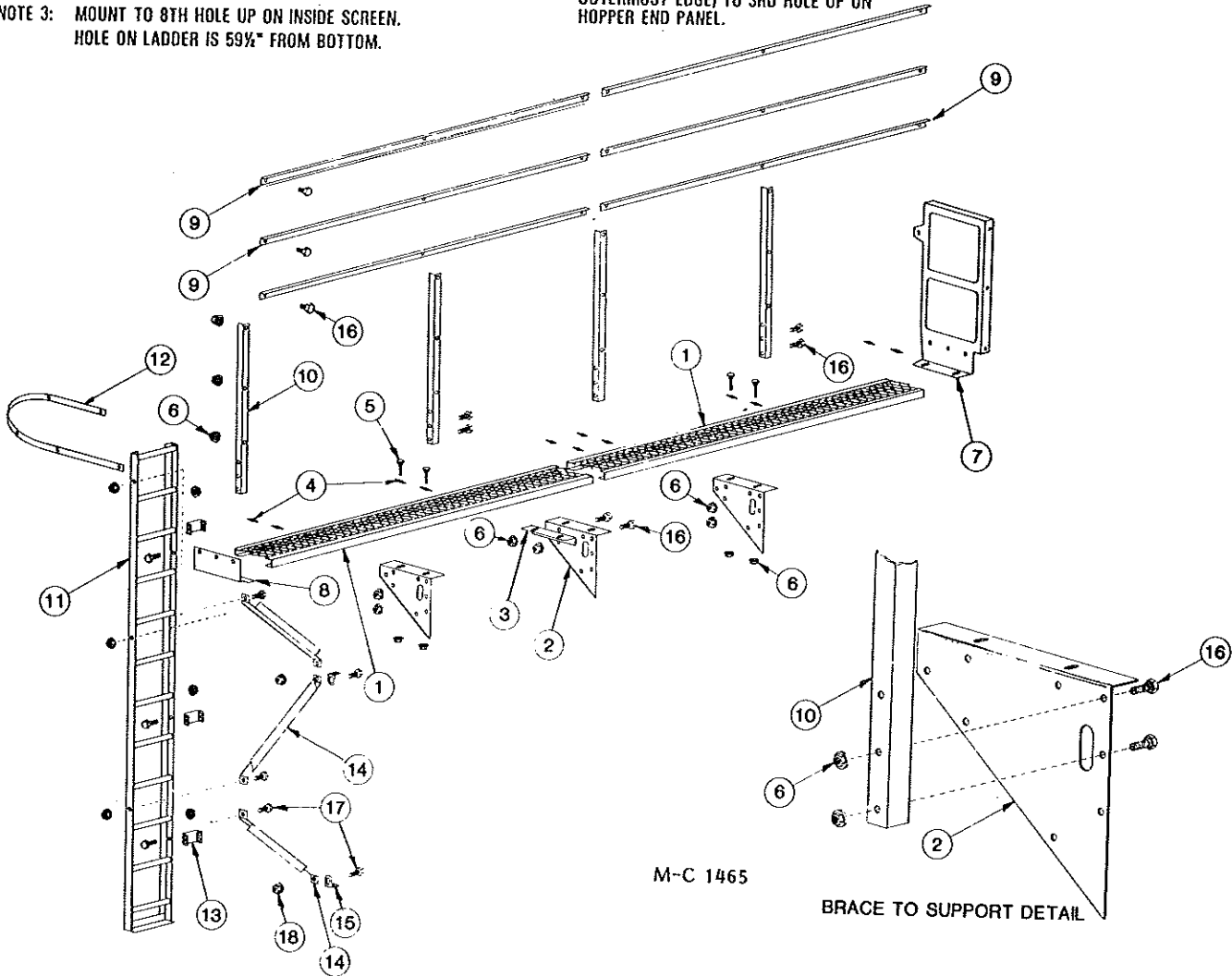
NOTE 1: USE 2 LOWER MTG. HOLES ONLY ON ITEM(S) #10.

NOTE 2: MOUNT TO 2ND HOLE UP ON INSIDE SCREEN. HOLE ON LADDER IS 24" FROM BOTTOM.

NOTE 3: MOUNT TO 8TH HOLE UP ON INSIDE SCREEN. HOLE ON LADDER IS 59 1/2" FROM BOTTOM.

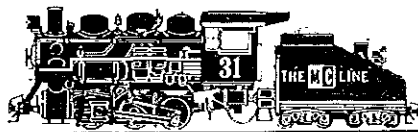
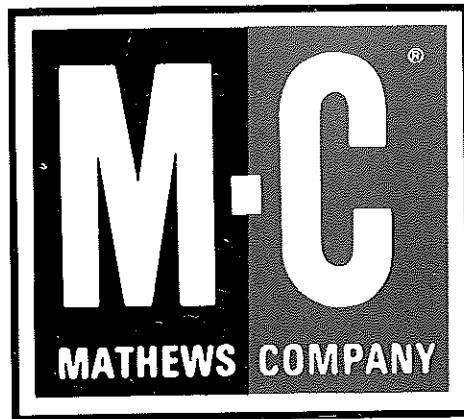
NOTE 4: MOUNT BRACKET THRU SAME HOLE AS REF. #8 IS MOUNTED.

NOTE 5: MOUNT REF. #12 FROM TOP OF LADDER OUTERMOST EDGE) TO 3RD HOLE UP ON HOPPER END PANEL.



Ref. Part No.	370 Qty.	570 Qty.	Description
1	128 5712	1	1 Walkway Grating - 95 1/4"
	129 8700	1	1 Walkway Grating - 95 3/4"
2	129 2600	1	3 Bridge Support
3	129 2602	1	1 Walkway Grating Support
4	120 8994	6	12 Walkway Grating Anchor Clip
5	001 8276	6	12 5/16-18x 3" Carriage Bolt
6	000 8169	56	142 5/16 Flanged Whiz Locknut
7	128 2758	1	1 Walkway End Guard 24 x 47 1/2"
8	124 2601	1	1 Walkway End Support

Ref. Part No.	370 Qty.	570 Qty.	Description
9	129 2004	3	6 Standard Guard Rail
10	129 2015	2	4 Guard Rail Brace
11	120 0045	1	1 Ladder - 11 1/2'
12	128 2031	1	1 Ladder Cage Hoop - 54"
13	128 2660	3	3 Ladder Mounting Bracket
14	128 2661	3	3 Ladder Mounting Angle
15	001 3302	3	3 Angle Clip
16	001 8202	50	130 5/16-18x 3/4" Hex Washer Head Bolt - Grd. 5
17	001 8209	12	12 3/8-16 x 1" Hex Washer Head Bolt - Grd. 5
18	000 8168	12	12 3/8-16 Flanged Locknut



*Iron Horse Quality*