

SHREDDER

**ASSEMBLY — OPERATION
AND MAINTENANCE
INSTRUCTIONS**

MODEL
10-12-12R

SH72

ASSEMBLY INSTRUCTIONS

CHECK PACKAGES AND BUNDLES TO MAKE SURE THAT THEY CORRESPOND WITH YOUR SHIPPING DOCUMENTS. MAKE CLAIMS FOR SHORTAGES IMMEDIATELY.



FIGURE 1.

Place the Shredder Body Assembly on blocking so that it sets approximately 6" to 10" above the ground. Mount the tires and wheels to the Wheel Mount Weldment (Figure 8. Ref. 19). Determine the desired wheel spacing for the crop to be cut and place the Wheel Mount Weldment against the axle of the machine. Proper alignment with the axle may be obtained by use of the rear Mechanical Ram. Place the Wheel Mount Clamping Bracket in position (Figure 8. Ref. 18), and bolt securely using the $\frac{1}{2}$ -13 x 2" H.H.C.S., nuts and washers provided. Follow the same bolting procedure for the remaining three wheel mounts. Tighten bolts evenly into place.

The drawbar assembly may now be bolted to the front of the machine using the $\frac{5}{8}$ -11 x 1- $\frac{1}{2}$ HHCS provided. At this time, the front mechanical ram should also be installed.

The rear Hitch Weldment is held in place by $\frac{5}{8}$ -11 x 1- $\frac{3}{4}$ HHCS. Place all bolts in holes and draw finger tight, before tightening down. Tighten bolts evenly into place.

Mount the power Take-Off Shaft in place as shown in Figure 8

LUBRICATION

Check oil level in gear box. Use No. 140 oil. Oil level should be up to oil level plug at side of gear box. Chain oiler should be filled with light engine oil to within $\frac{1}{8}$ " of the top of the tube. Be sure oiler is positioned correctly. Illustration shows points to lubricate with grease gun. The bearings have been greased; no additional lubricant is necessary to start. Regrease at required intervals. Add grease slowly with shaft revolving wherever

possible until grease comes rapidly out of pressure relief hole in grease fitting. Use caution when using high-pressure high-volume gun. Use grease sparingly and just give it enough to do the job. When you put the machine away at the end of the season, fill the bearings with grease to eliminate any cavities where condensation may occur.

OPERATING INSTRUCTIONS

Adjust Drawbar for Best Performance

Drawbar should operate level between the machine and tractor. Adjustment is provided for raising or lowering by means of a mechanical ram, located above the drawbar.

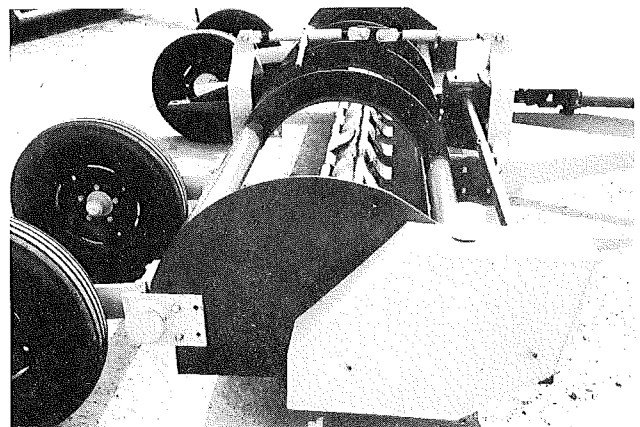


FIGURE 2.

ASSEMBLY INSTRUCTIONS

CUTTING HEIGHT ADJUSTMENT

Cutting Height Adjustment is made by cranking the mechanical rams furnished on the machine, or by using a hydraulic cylinder in place of the rear mechanical ram, such as used on a plow. A hydraulic cylinder is desirable in rocky fields, especially if you see a rock you can raise the machine up and over. It is best, however, to stop and pick up the rocks.

TRACTOR GROUND SPEED AND POWER TAKE-OFF SPEED

Operating with a Power Take-Off speed of 540 RPM's and with a ground speed of from three to six miles per hour, you may shred heavy crops provided you have power available. The Model 12 Shredder requires a 4 plow tractor. Horsepower requirements vary with the weight of crop and the type of shredding. Horsepower is reduced by traveling at a slower forward speed. The right combination of power take-off speed and ground speed will produce the best results.

BREAKING IN PERIOD

It takes approximately 10 to 15 acres of shredding to get the inside of the machine and the blades polished to get the best performance. As the machine works in, performance will get better. After the machine has been operated a few hours, check all nuts and bolts to make sure they are tight. Open front cover and check knife bolts to be sure they are tight.

NOTE: When sharpening blades, try to maintain original angle of cutting edge as close as possible.

MAINTENANCE OF SHREDDER BLADES

The machine is designed for easy inspection of shredder blades and rotor. To make this inspection, loosen "J" bolts and remove the cover. The shredder blades will last a long time with only occasional sharpening. It is important to check the blades occasionally to get good shredding action. The blades are eccentrically pivoted to the rotor shaft so that when they cut into the stalk, they swing back slightly causing an extended arc of cutting, thereby giving a smoother cut. It is important that the knives swing freely. When replacing blades to the hangers, be sure the whole blade assembly swings free. Be sure to tighten all bolts.

MAINTENANCE OF CHAIN DRIVE AND SPROCKETS

The sprockets must be lined up so that the chain runs perfectly straight on the sprockets. If chain runs extremely hot, this means the sprockets are not in line and the chain is dragging on the side of one of the sprockets. When your chain becomes excessively worn, it will then cause excessive wear on the sprockets. Be sure the sprockets are in line and set screws are tight. This is your best assurance of

good service. Keep Chain Oiler reservoir filled (see lubrication instructions).

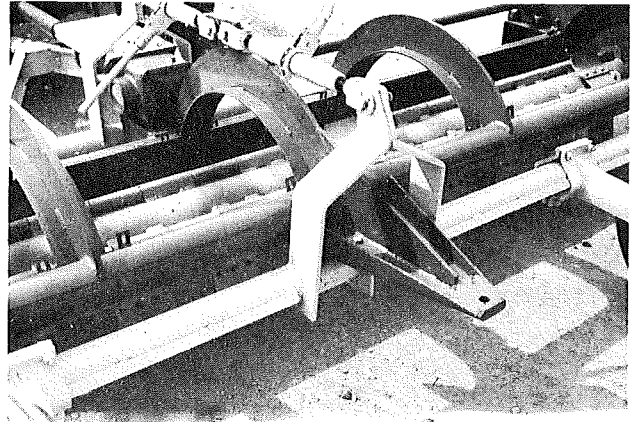


FIGURE 3.

SAFETY SHEAR PIN DEVICE

All M-C Shredders are equipped with safety shear bolts which fasten the drive sprocket to a flange on the gearbox output shaft. These shear pins are to protect the gear box and drive chain from damage. They will snap if the tractor clutch is let out too fast, or if the machine is submitted to severe impact from an unseen object in the line of travel. DO NOT USE HARDENED BOLTS FOR SHEAR PINS.

PROVISION FOR 1000 RPM POWER TAKE-OFF TRACTOR

The M-C Model 12 Shredder is designed primarily for use with a 540 RPM Power Take-Off. However, the shredder is designed so as to allow for use with 1000 RPM P.T.O.'s by use of a 1000 RPM Conversion Kit.

CHAIN CURTAIN ASSEMBLY

A Chain Curtain Assembly is available for the Model 12 Shredder at an additional cost.

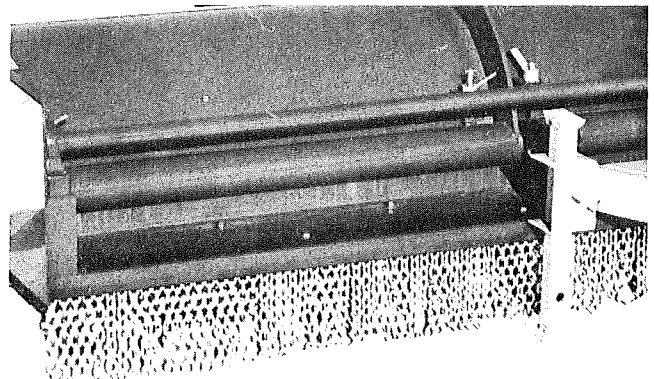
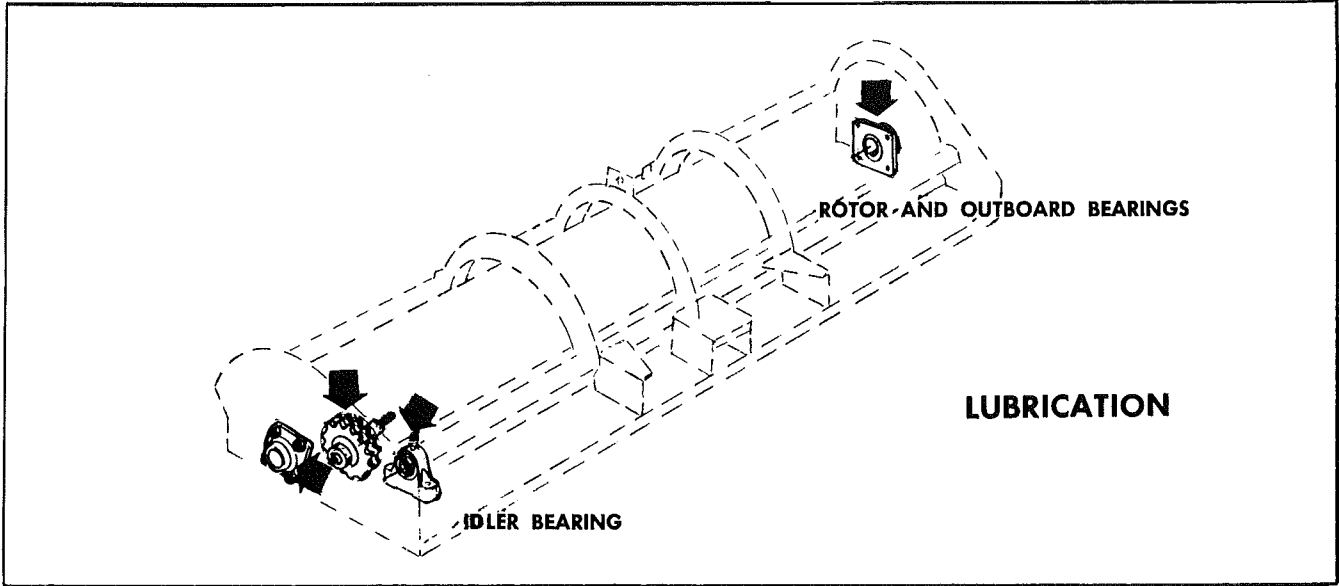


FIGURE 4.

ASSEMBLY INSTRUCTIONS



LUBRICATION

Check oil level in gear box. Use No. 140 oil. Oil level should be up to oil level plug at side of gear box. Chain Oiler should be filled with a light engine oil to within 1/8" of the top of the tube. Be sure oiler is positioned correctly. Illustration shows points to lubricate with grease gun. All points should be lubricated once a day if machine is getting

FIGURE 5.

constant use. A hand grease gun is best because there will be less tendency to break the seals in the bearings by forcing too much grease into them. Use grease sparingly and just give it enough to do the job. When you put the machine away at the end of the season, fill the bearings with grease to eliminate any cavities where condensation may occur.

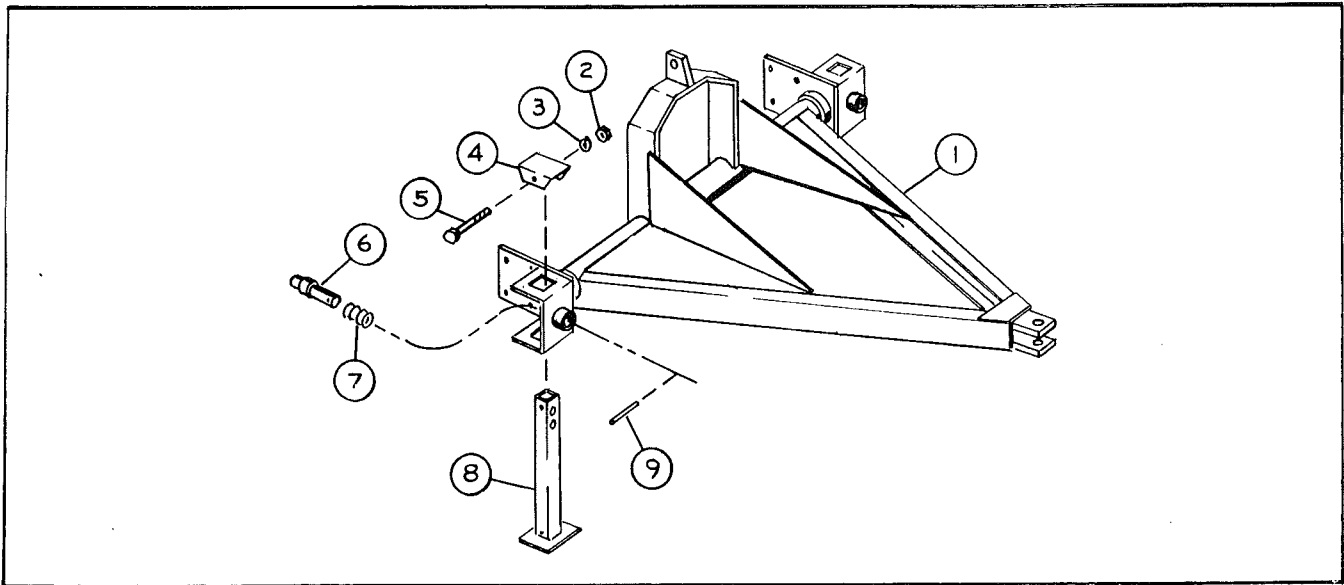


FIGURE 6.

DRAWBAR ASSEMBLY

REF. NO.	PART	DESCRIPTION
1	1110024	Drawbar Weldment
2		5/16-18 Hex Nut
3		5/16" Lock Washer
4	1114765	Stand Cover
5		5/16-18 x 2-1/2 H.H.C.S.

REF. NO.	PART	DESCRIPTION
6	1110026	Lockpin Weldment
7	1118999	Lock Pin Spring
8	1110025	Stand Weldment
9	1118100	1/4" x 3" Roll Pin

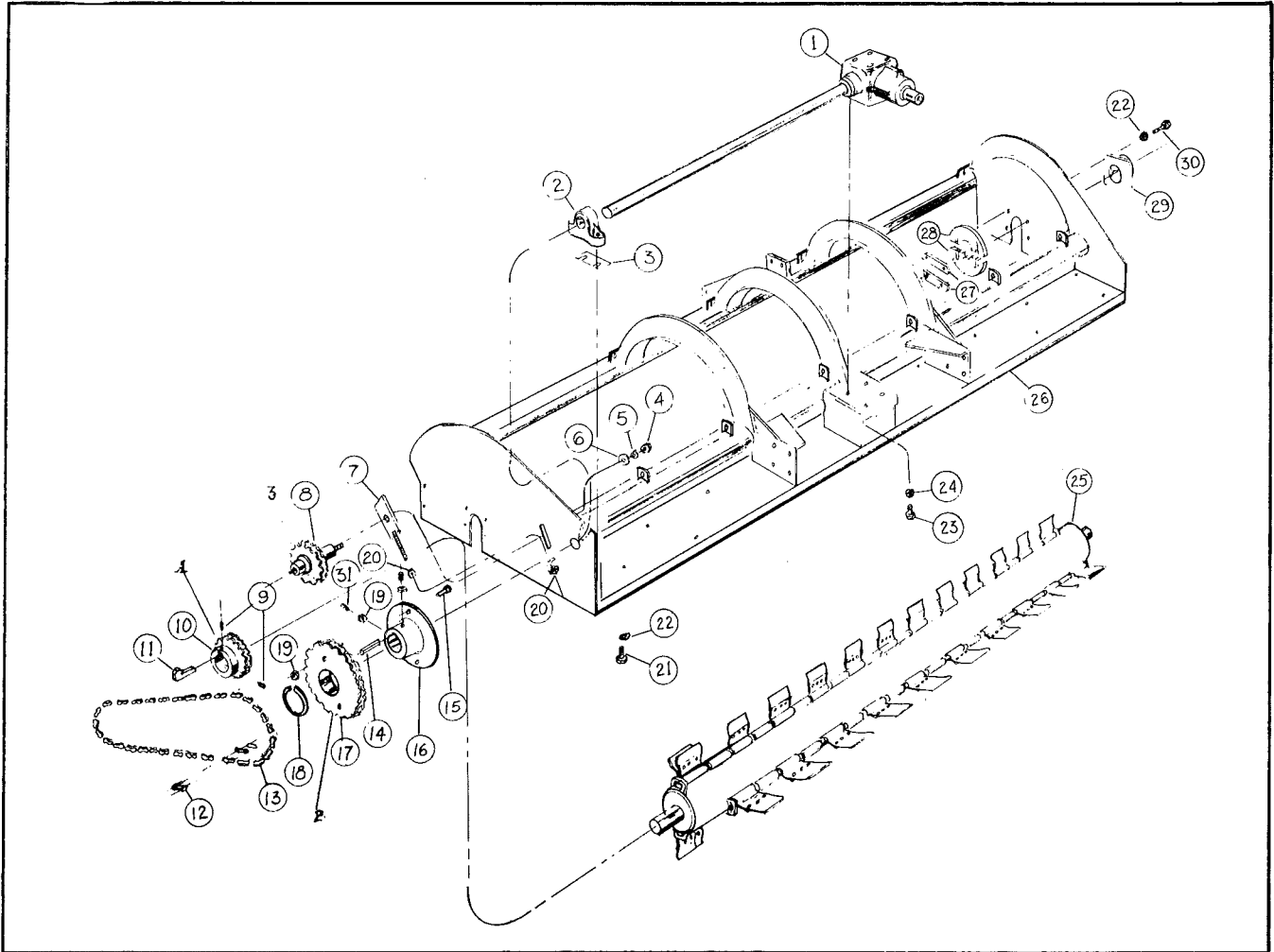


FIGURE 7.

BODY ASSEMBLY

REF. NO.	PART	DESCRIPTION
1	1116604	Gear Box #12 & #12 Rice
	1116606	Gear Box #10
2	0016013	Pillow Block Bearing 1-3/4
3	0014877	Bearing Shim
4		3/4-10 Hex Nut
5		3/4 Lock Washer
6	1118250	Flat Washer 3/4 ID x 1-1/2 OD
7	1110033	Idler Mount
8	1111009	Idler Assembly
9		3/8-16 x 1/2 Allen Set Screw
10	1116401	Sprocket RC60-2, 19T x 1-15/16 B.
11	0018987	Gib Head Key 1/2 x 2-1/4 Lg.
12	0026303	Connecting Link RC60-2
13	1116302	Chain RC60-2
14	0015139	3/8 x 3" Lg. Key Stock
15		3/8-16 x 2-1/2" H.H.C.S.
16	0017651	Sprocket Shear Flange

REF. NO.	PART	DESCRIPTION
17	1116402	Sprocket RC60-2, 36T x 3-1/2 B.
18	0018100	Snap Ring - Shear Flange
19	0018149	Lock Nut
20		1/2-13 Hex Nut
21		1/2-13 x 1" H.H.C.S.
22		1/2 Lock Washer
23		5/8-11 x 3/4" H.H.C.S.
24		5/8 Lock Washer
25	1111002	Rotor Assembly #12
	1111012	Rotor Assembly #10
	1131002	Rotor Assembly #12 Rice
26	1110050	Body Weldment #12 & #12 Rice
	1110044	Body Weldment #10
27	0015175	Stud Anchor
28	0014652	Rotor Anti-Wrap
29	0016010	4-Bolt Flange Brg. 1-15/16"
30		1/2-13 x 1-1/2" H.H.C.S.

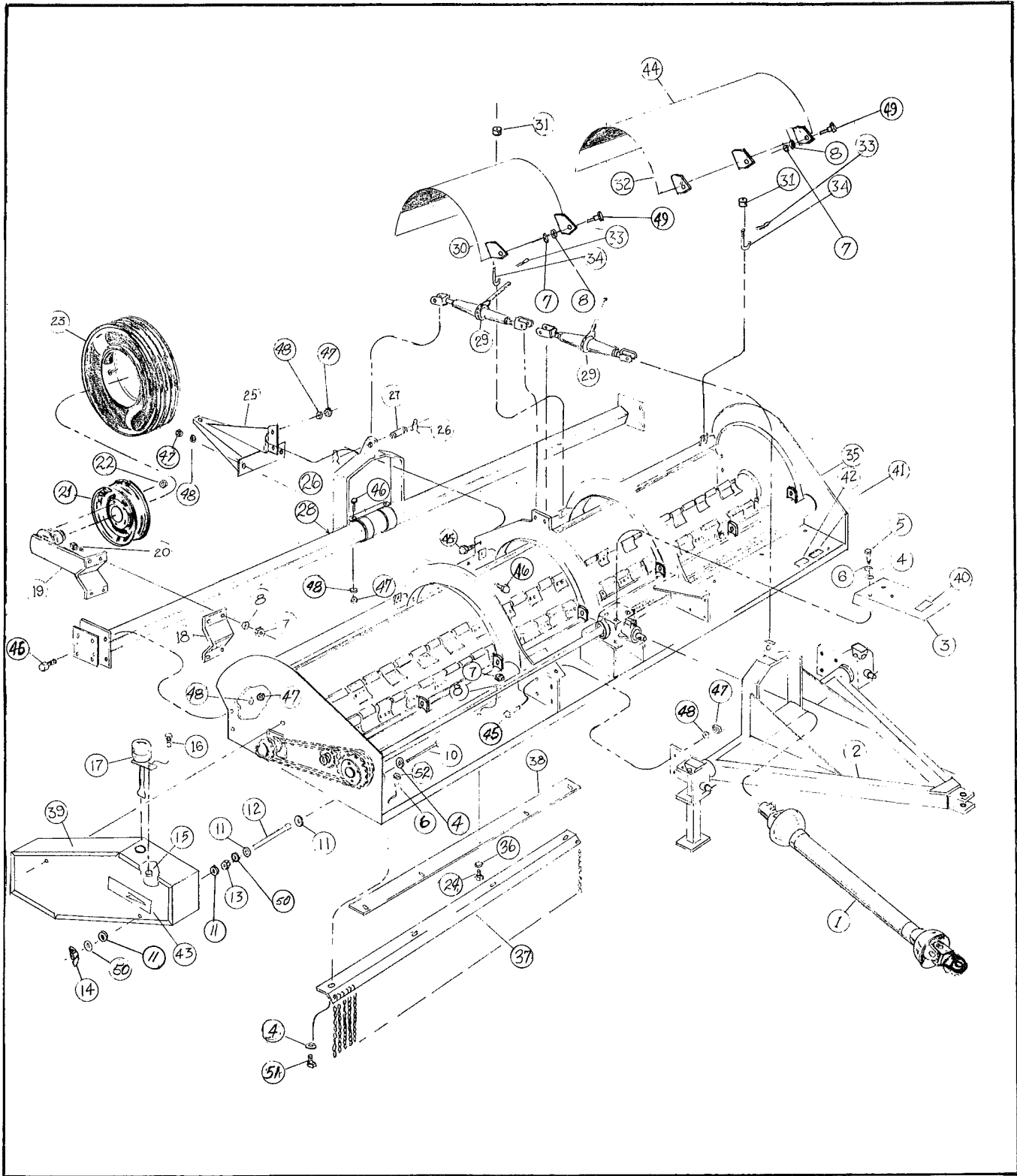


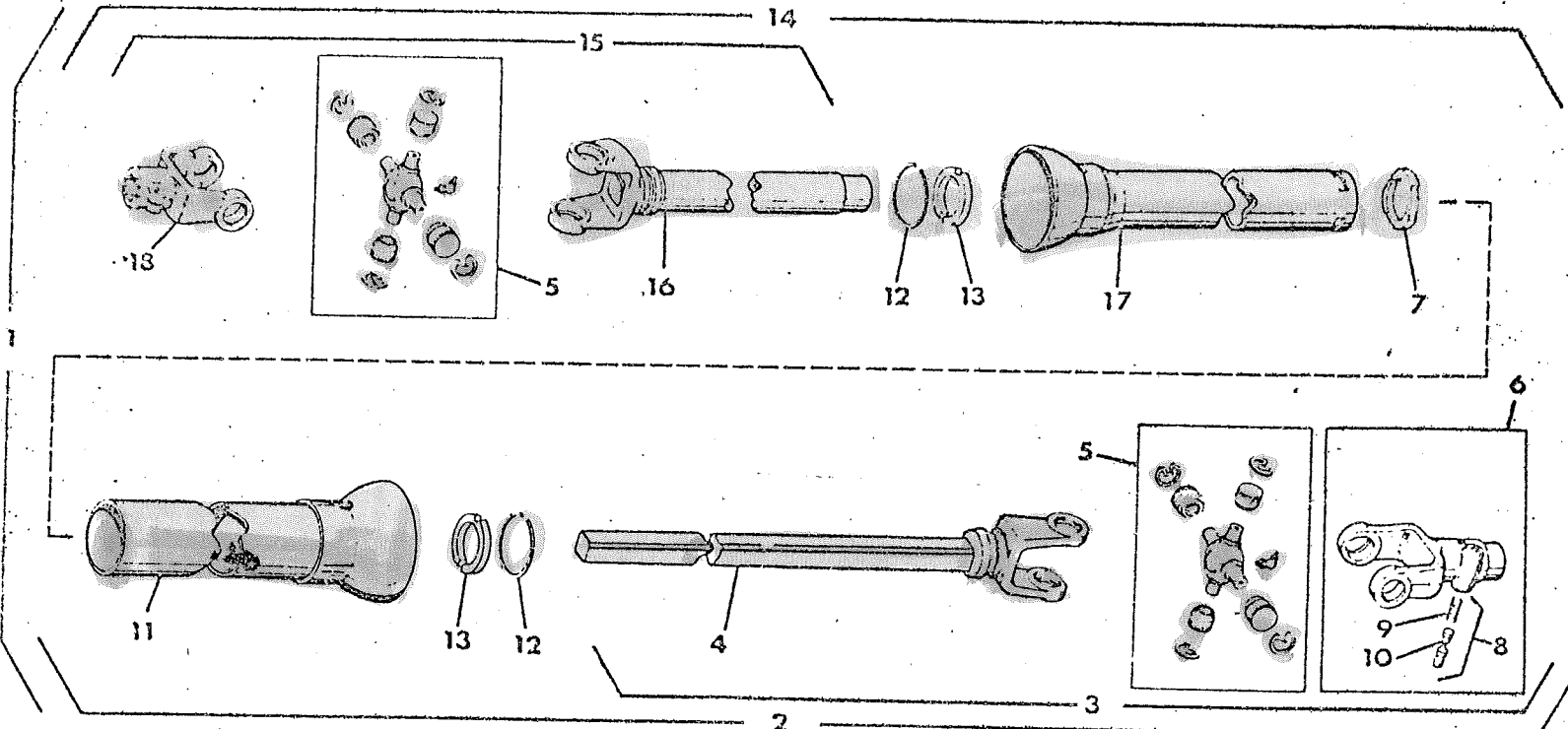
FIGURE 8.

MACHINE ASSEMBLY

WEASLER ENGINEERING & MFG. CO., INC.

P. O. BOX 558 — WEST BEND, WISCONSIN 53095

UNIVERSAL JOINT TELESCOPING ASSEMBLY WITH NYLON QUICK DETACHABLE FREEWHEELING GUARD



<u>Mathews Part No.</u>	<u>Weasler Part No.</u>	<u>Key No.</u>	<u>Description</u>
1116605	L1188	1	"L55" Universal Joint & Telescoping Shaft Assembly with Nylon QDFWG
1126622	L1188SG	2	Joint & Shaft with QDFWG
1126623	L1188S	3	Joint & Shaft Assembly
1126624	L1N1/9F384H	4	Yoke & Shaft Assembly
0026633	"L55" Kit	5	Repair Kit
0926630	L2P1L	6	Q.D. Yoke Assembly (1-3/8-6B)
0026613	4A27	7	Nylon Centralizer
0026629	33A15H/23A1	8	Saf*T*Pin & Spring Kit
0026602	23A1	9	Lock Pin Spring
0026601	33A15H	10	Saf*T*Pin
1126628	1F337A280/N1	11	Female Guard Assembly
0028250	24N26	12	Bearing Retainer
0026634	4N21	13	Nylon Bearing
1126629	L1188TG	14	Joint & Tube w/QDFWG
1126630	L1188T	15	Joint & Tube Assembly
1126631	7X227/L1N15	16	Yoke & Tube Assembly
1126633	1E341S036/N2	17	Male Guard Assembly
0026641	L2P3	18	Clamp Yoke (1-3/4-6B)

540 RPM

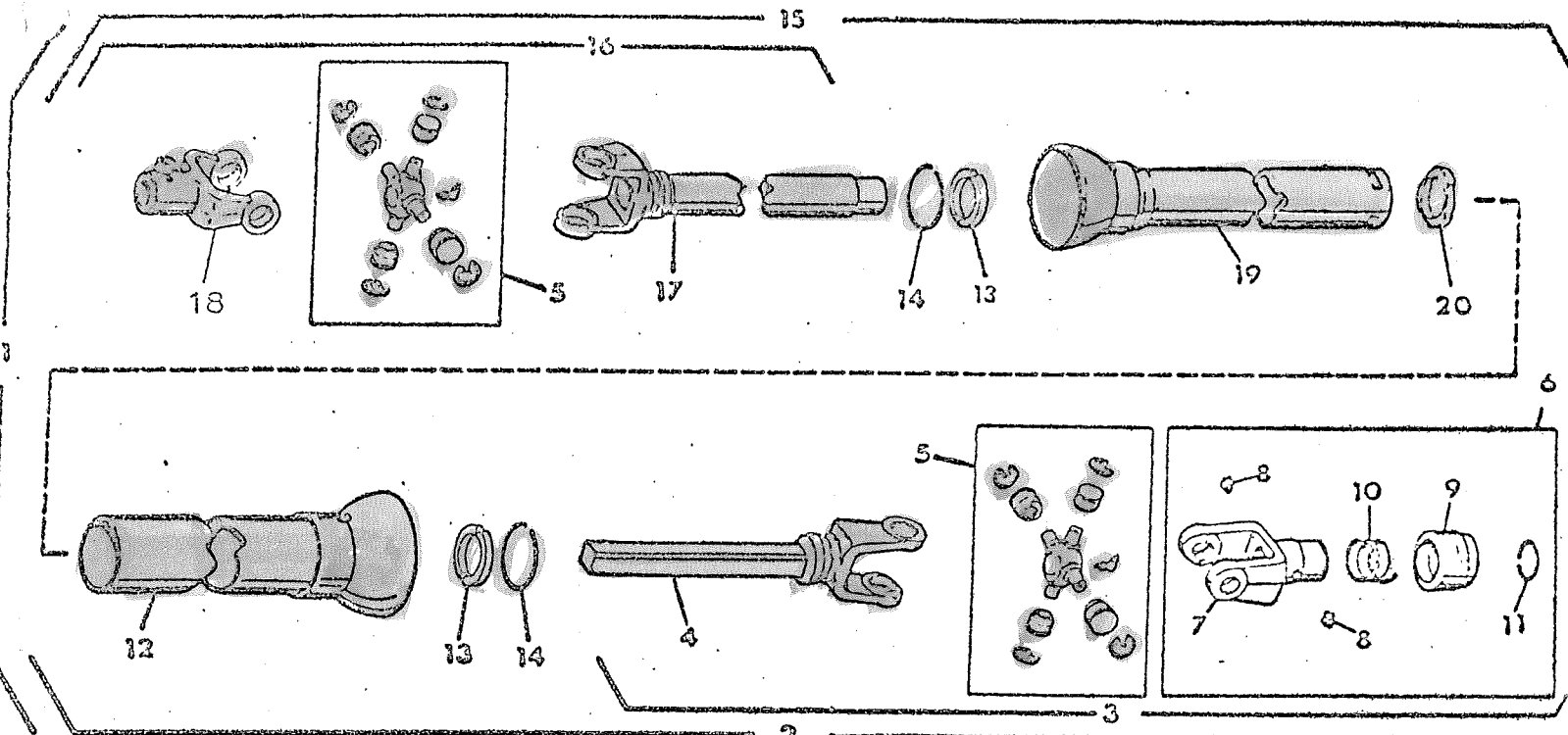
Mathews Company

Part No.	Drwg. No. & Rev.
L1188	D-3990-D
Issue Date	Issue Date

WEASLER ENGINEERING & MFG. CO., INC.

P. O. BOX 558 WISBY BEND, WISCONSIN 53095

UNIVERSAL JOINT TELESCOPING ASSEMBLY WITH NYLON QUICK DETACHABLE FREEWHEELING GUARD



<u>Mathews Part No.</u>	<u>Weasler Part No.</u>	<u>Key No.</u>	<u>Description</u>
1136600	L1188A	1	"L55" Universal Joint & Tel. Shaft Assembly w/Nylon QDFWG
	L1188ASG	2	Joint & Shaft with QDFWG
	L1188AS	3	Joint & Shaft Assembly
1126624	L1N1/9F384H	4	Yoke & Shaft Assembly
0026633	"L55" Kit	5	Repair Kit
	L1P9L	6	Slide Lock Yoke Assembly
	L1P9	7	Slide Lock Yoke (1-3/8-21)
0026632	33A20	8	Pawl
0026631	6A24	9	Collar
	23A8	10	Spring
1126627	24A7	11	Retaining Ring
1126628	1F337A280/N1	12	Female Guard Assembly
0026634	4N21	13	Nylon Bearing
0028250	24N26	14	Bearing Retainer
1126629	L1188TG	15	Joint & Tube w/QDFWG
1126630	L1188T	16	Joint & Tube Assembly
1126631	7X227/L1N15	17	Yoke & Tube Assembly
0026641	L2P3	18	Clamp Yoke (1-3/4-63)
1126633	1E341S036/N2	19	Male Guard Assembly
0026613	4A27	20	Nylon Centralizer

1000 RPM

Mathews Company

		AB		Part No.	Drwg. No. & Rev.
		AA		L1188A	D-3990-D

MACHINE ASSEMBLY

REF. NO.	PART	DESCRIPTION
1	1116605	Power Shaft
2	1111000	Drawbar Assembly
3	0014876	Universal Guard
4		3/8 Flat Washer
5		3/8-16 x 3/4" H.H.C.S.
6		3/8 Lock Washer
7		1/2-13 Hex Nut
8		1/2 Lock Washer
9		1/2-13 x 1-1/2" H.H.C.S.
10		5/16-18 x 6-1/2" Carriage Bolt
11		5/16 Flat Washer
12	1115570	Chain Guard Spacer
13		5/16-18 Hex Nut
14		5/16 Wing Nut
15		5/16 Whiz Nut
16		5/16-18 x 1/2" H.H.C.S.
17	1110036	Oiler Weldment
	0017982	Oiler Cap
18	1113572	Clamping Brk't Wheel Mount
19	1111006	Wheel Mount Assembly
20		1/2-13 x 2-1/2" H.H.C.S.
21	0018993	Wheel Rim
22	0018989	Wheel Lug Nut
23	0008999	Tire & Tube 15" Implement
24		1/2-13 x 1-1/4" H.H.C.S.
25	1110043	Rear Hitch Weldment
26	0928250	Spring Clip-Ram Pin
27	0928230	Ram Pin
28	1110041	Axle Weldment #12 & #12 Rice
	1110045	Axle Weldment #10
29	0018985	Ratchet Jack

REF. NO.	PART	DESCRIPTION
30	1110049	Center Cover Weldment #10 & #12
	1130003	Right Center Cover Weld. #12 Rice
	1130006	Left Center Cover Weld. #12 Rice
31	0018982	Clamping Nut
32	1110048	End Cover Weldment #12
	1110046	End Cover Weldment #10
	1130004	Right End Cover Weld. #12 Rice
	1130005	Left End Cover Weld. #12 Rice
33		1/8 x 3/4 Cotter Pin
34	0018132	"J" Bolt 3/8-16 x 4
35	1111011	Body Assembly #12 & #12 Rice
	1111013	Body Assembly #10
36		1/2 Flat Washer
37	1131000	Chain Curtain Assembly #12
	1131001	Chain Curtain Assembly #10
38	0003470	Cutter Bar #12 & #12 Rice
	1113435	Cutter Bar #10
39	1110038	Chain Guard
40	0018309	Decal (Warning-Do Not Operate)
41	0018304	Serial No. Plate
42	0018310	Decal (Warranty)
43	0018303	Decal (R.H. Arrow)
44	0018302	Decal (M-C)
45		5/8-11 x 1-1/2" H.H.C.S.
46		5/8-11 x 1-3/4" H.H.C.S.
47		5/8-11 Hex Nut
48		5/8 Lock Washer
49	0018163	1/2-13 Shoulder bolt
50		5/16 Lock Washer
51		3/8-16 x 1-1/4" H.H.C.S.
52		3/8-16 Hex Nut

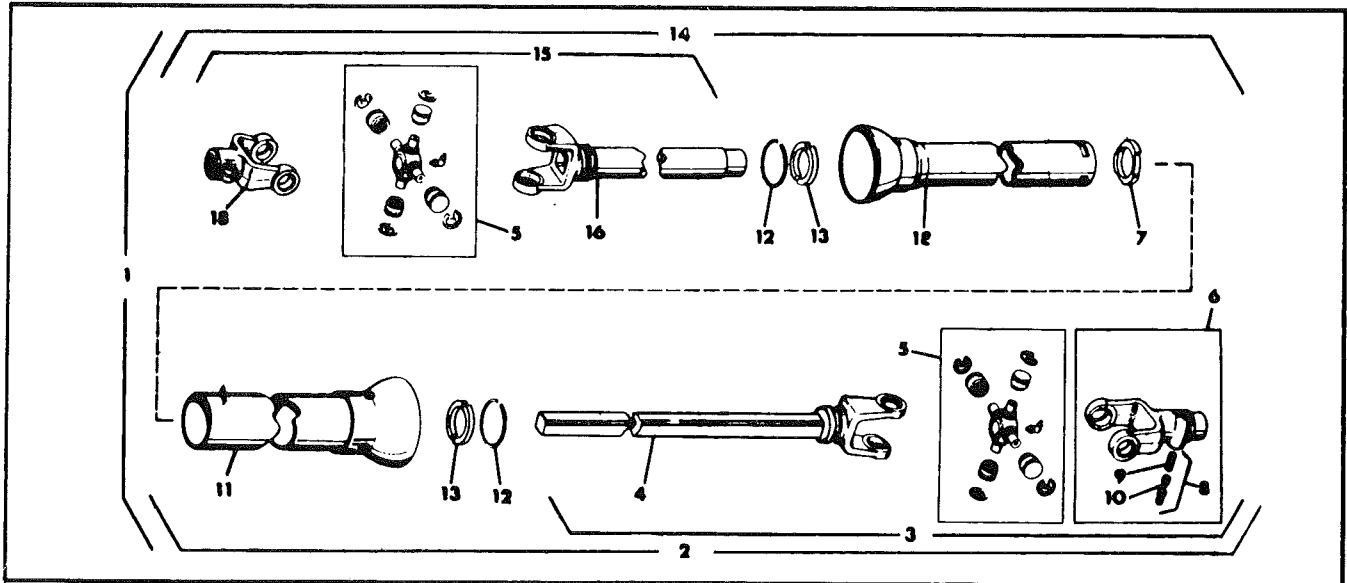


FIGURE 9.

P. T. O. SHAFT Part No. 1116605

REF. NO.	PART	DESCRIPTION
1	1116602	"L55" Universal Jnt & Telescop. Shaft w/QDFWG
2	1126622	Joint & Shaft w/QDFWG
3	1126623	Joint & Shaft Assembly
4	1126624	Yoke & Shaft Assembly
5	0026633	Repair Kit
6	0026656	Q.D. Yoke Assembly (1-3/8-6B)
7	0026613	Nylon Centralizer
8	0026629	Saf*T*Pin & Spring Kit
9		Lock Pin Spring

REF. NO.	PART	DESCRIPTION
10		Saf*T*Pin
11	1126628	Female Guard Assembly
12	0028250	Bearing Retainer
13	0026634	Nylon Bearing
14	1126629	Joint & Tube w/QDFWG
15	1126630	Joint & Tube Assembly
16	1126631	Yoke & Tube Assembly
17	1126633	Male Guard Assembly
18	0026641	Clamp Yoke (1-3/4-6B)

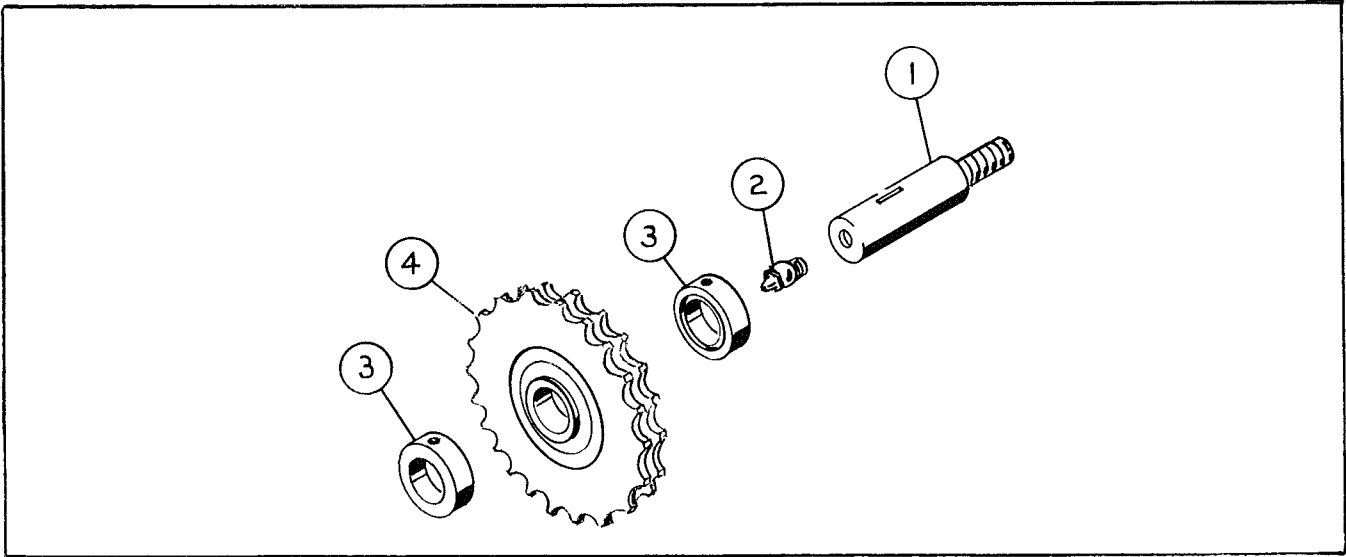


FIGURE 10.

IDLER ASSEMBLY

Part No. 1111009

REF. NO.	PART	DESCRIPTION	REF. NO.	PART	DESCRIPTION
1	1115041	Idler Shaft	3	0016002	Bearing Lock Collar
2	0026604	Grease Fitting	4	0011002	Idler Sprocket Assembly

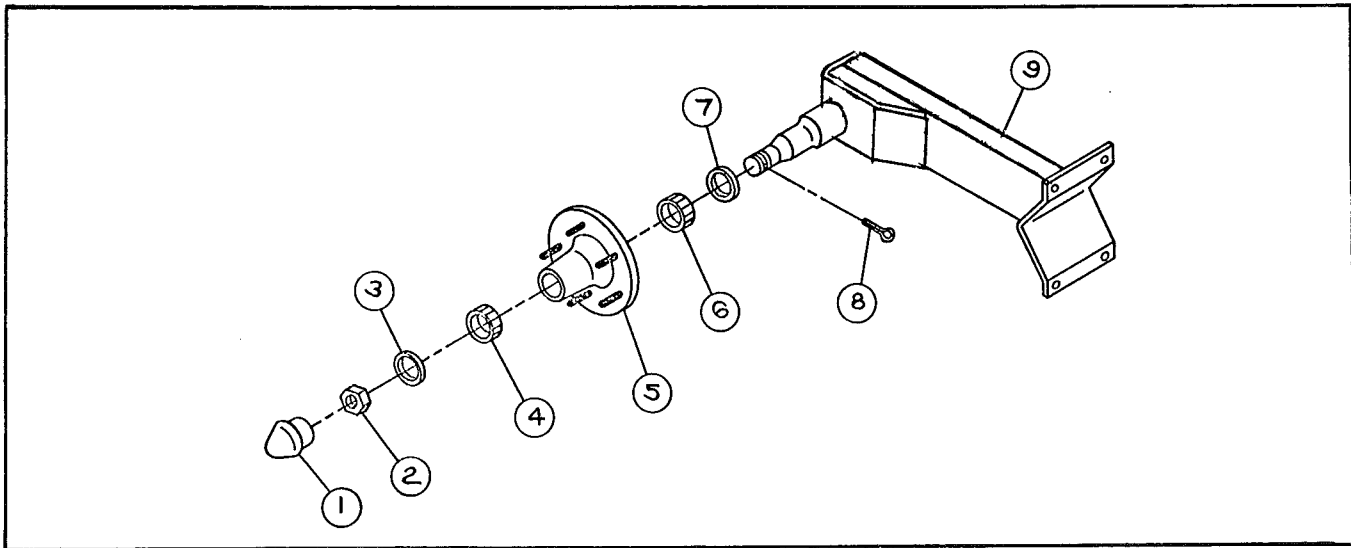


FIGURE 11.

WHEEL MOUNT ASSEMBLY

Part No. 1111006

REF. NO.	PART	DESCRIPTION	REF. NO.	PART	DESCRIPTION
1	0018996	Wheel Hub Cap	6	0016001	Wheel Inner Bearing
2	0018253	Wheel Spindle Nut	7	0018991	Wheel Seal
3	0018254	Wheel Spindle Washer	8	0018252	1/8 x 1-1/2 Lg. Cotter Pin
4	0016000	Wheel Outer Bearing	9	1110031	Wheel Mount Weldment
5	0018992	Wheel Hub Assembly			

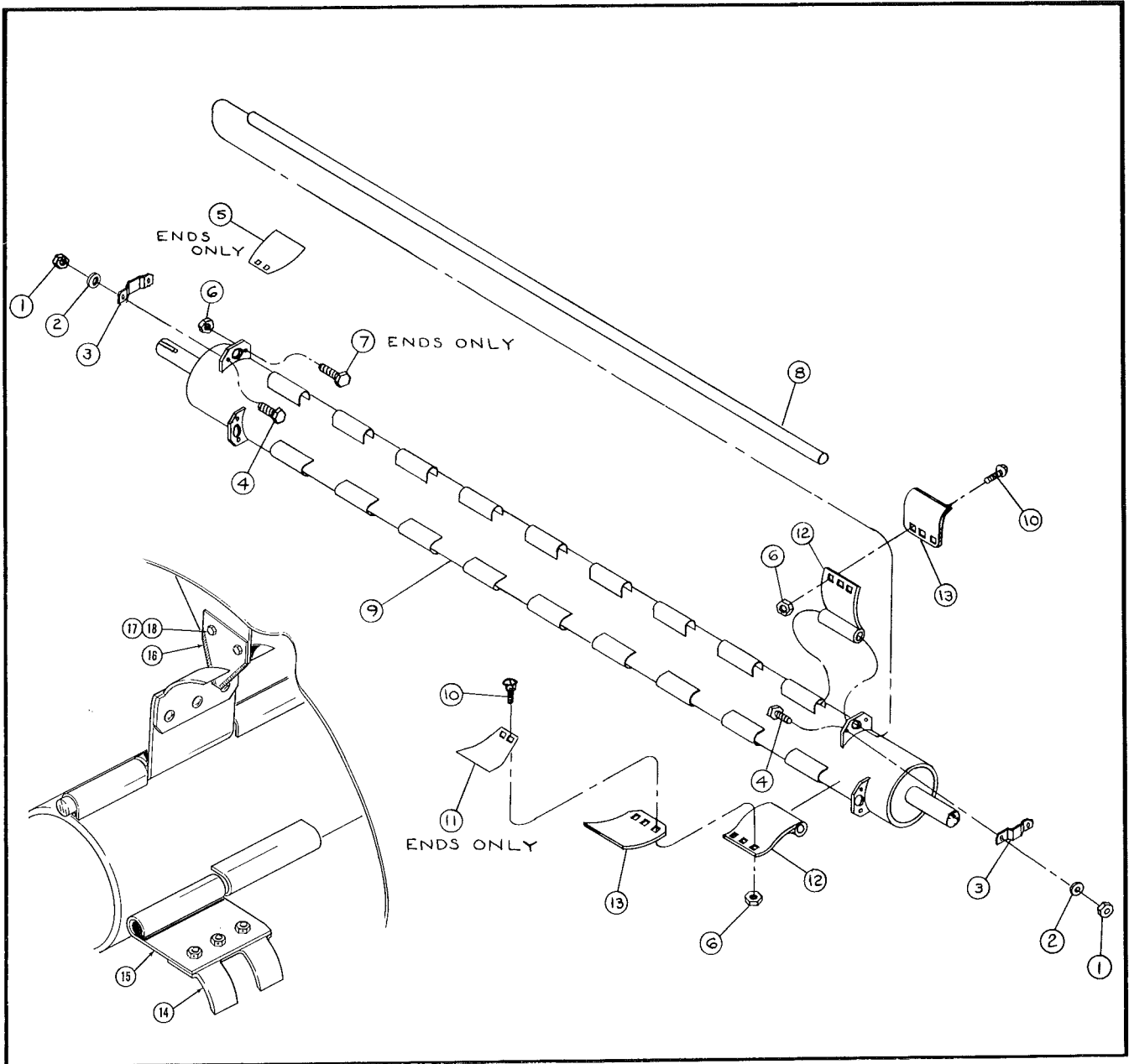


FIGURE 12.
ROTOR ASSEMBLY

REF. NO.	PART	DESCRIPTION
1		3/8-16 Hex Nut
2		3/8 Lock Washer
3	0012000	End Locator Bracket
4		3/8-16 x 1" H.H.C.S.
5	0015207	Right End Knife
6	0018149	3/8-16 Lock Nut
7		3/8-16 x 1-1/2" HHCS Full Thread
8	0018983	Rotor Hanger Bar #10
	1118998	Rotor Hanger Bar #12 & #12 Rice
9	1110029	Rotor Weldment #12 & #12 Rice
	0010016	Rotor Weldment #10
10	0018131	3/8-16 Carriage Bolt - Special

REF. NO.	PART	DESCRIPTION
11	0015206	Left End Knife
12	0015205	Wide Blade Hanger
13	0015208	Heavy Duty Knife Blade
14	1135201	Rice Heavy Duty Knife Blade
15	1135200	Rice Wide Blade Hanger
16	1138999	Sickle Section Knife
17		5/16-24 Hex Lock Nut
18		5/16-24 x 1/2" HHCS Grade #5

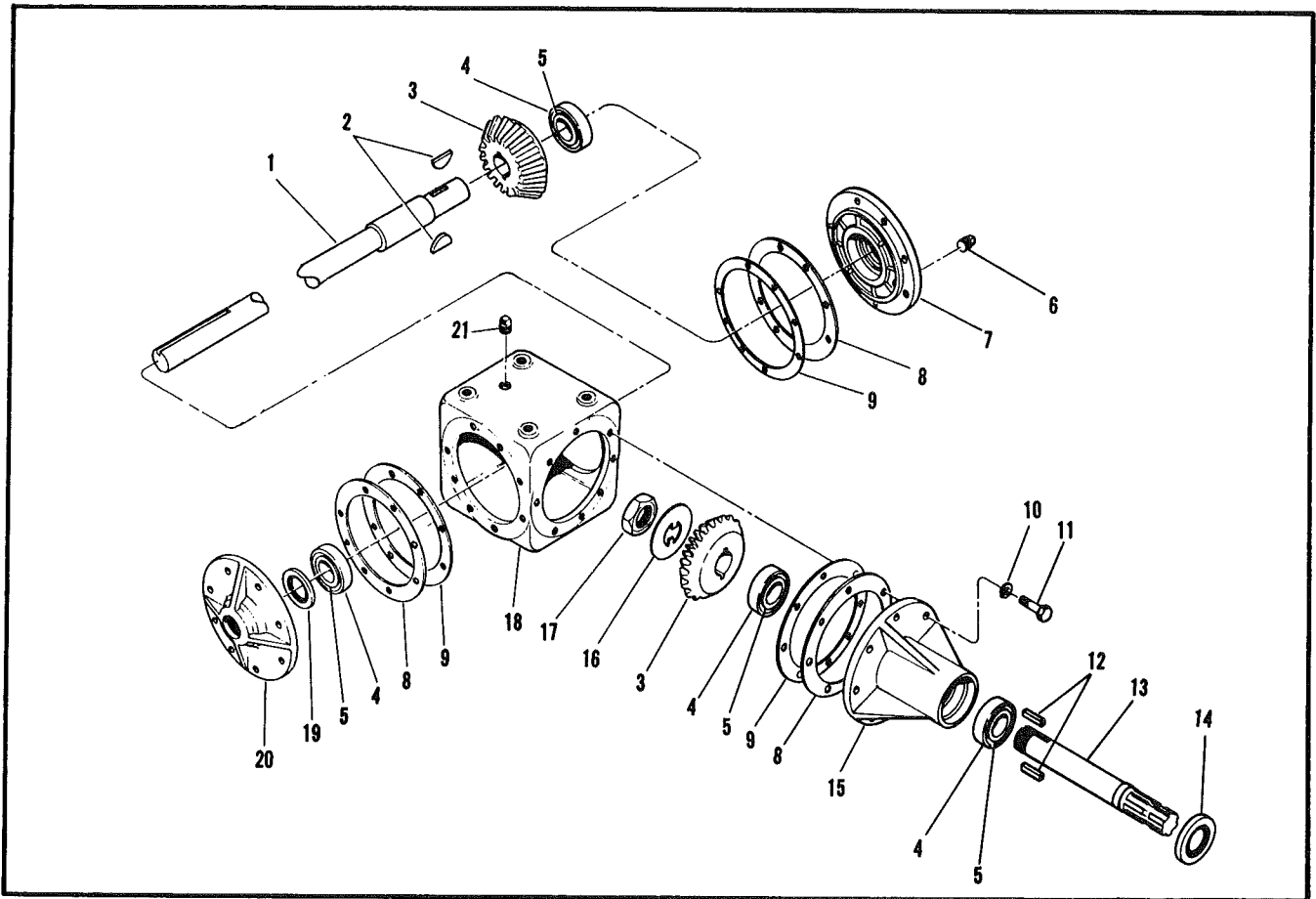


FIGURE 14.
GEAR BOX

PART NO. 1116606 #10

PART NO. 1116604 #12 & #12 Rice

REF. NO.	PART	DESCRIPTION
1	1126634	Output Shaft - Gear Box #12 & #12 Rice
	1126635	Output Shaft - Gear Box #10
2	0018988	Woodruff Key, 3/8 x 1-1/2"
3	0026500	Bevel Gear
4	0026011	Bearing Cone
5	0026010	Bearing Cup
6	0028000	Oil Level Plug
7	0027655	Cover, Solid - Gear Box
8	0026636	Gasket Shim .005 Thick
9	0026637	Gasket Shim .010 Thick
10		1/2 Lock Washer

REF. NO.	PART	DESCRIPTION
11		1/2-13 x 1-1/2" Lg. Hex Bolt
12	0015134	Key, 3/8 x 3/8 x 1-3/8" Lg.
13	0026638	Input Shaft
14	0026639	Grease Seal
15	0027656	Hub
16	0028252	Lock Washer
17	0028251	Nut, Input Shaft
18	0027654	Gear Housing
19	0026635	Grease Seal
20	0027653	Cover, Gear Box Output
21	0026607	Plug Vent



INSTRUCTIONS FOR ORDERING PARTS

1. ALL PARTS MUST BE ORDERED FROM YOUR DEALER.
2. GIVE MODEL NAME, NUMBER and SERIAL NUMBER that is stamped on the NAME PLATE of your machine.
3. Order from your PARTS LIST as this is the ONLY means we have of identifying the parts you need. Order by the QUANTITY DESIRED, the PART NUMBER and the DESCRIPTION OF THE PART.

NOTE: The Company reserves the right to incorporate any changes in design without obligation to make these changes on units previously sold.



OWNERS NOTICE

**TO INSURE WARRANTY CLAIMS, BE CERTAIN TO FILL
OUT AND MAIL WARRANTY CARD WITHIN 30 DAYS.**

