

OWNER'S MANUAL

and PARTS LIST

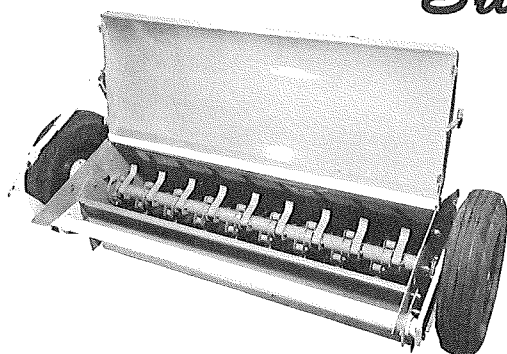
for

Jacobsen

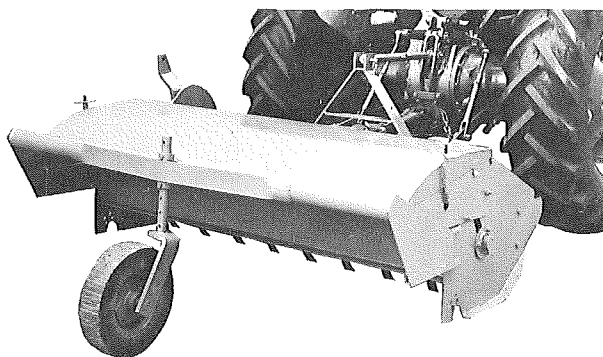
Swing Knife Blitzer

MODELS 113 & 114

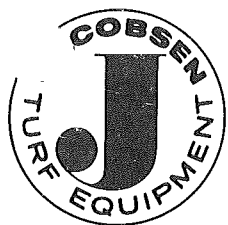
SERIALS 2501 AND UP



MODEL 113 PULL TYPE
WITH ROLLER ACCESSORY



MODEL 114 3 POINT LIFT
WITH TAIL WHEEL ACCESSORY



JACOBSEN MANUFACTURING COMPANY • RACINE, WISCONSIN

INSTRUCTIONS FOR ORDERING PARTS

To eliminate error and speed delivery:

1. Write your NAME and ADDRESS on your order PLAINLY.
2. Explain WHERE and HOW to make shipment.
3. GIVE MODEL NAME, NUMBER, and SERIAL NUMBER that is stamped on the NAME PLATE, of your product.
4. Order from your PARTS LIST as this is the ONLY means we have of identifying the parts you need. Order by QUANTITY DESIRED, the PART NUMBER, and the DESCRIPTION OF PART.
5. Send your order to your nearest JACOBSEN DEALER, AUTHORIZED SERVICE STATION, or AUTHORIZED JACOBSEN SERVICE DISTRIBUTOR.
6. INSPECT ALL SHIPMENTS ON RECEIPT. If any parts are damaged or missing, file a claim with the carrier before accepting.
7. Do not return material to your nearest JACOBSEN DEALER, AUTHORIZED SERVICE STATION or AUTHORIZED JACOBSEN SERVICE DISTRIBUTOR without a letter of explanation. Make a list of all returned parts, show your name and address and include it with the shipment. TRANSPORTATION CHARGES MUST BE PREPAID.

WARRANTY

These machines are guaranteed against defective workmanship and materials for a period of 90 days from date of purchase.

Any parts of machine will be replaced free of charge, providing our inspection proves the machine was properly lubricated and not abused.

Knives - Swing Knife Blitzer knives are not delicate, but continued pounding on rocks or digging the earth will cause failure. If any knives break due to defective steel or heat treating during the 90 day Warranty period, we will replace them free of charge.

Welding - We will also reimburse customer for labor necessary to repair faulty welding. Basis of payment will be determined from our own experience in knowing time necessary to make such repairs. A warranty claim for the repairs made must accompany the complaint in order to receive payment.

Rotor - This policy is void if the machine is operated with knives missing or if rotor gets out of balance caused by excessive speed or hitting large rocks of other objects. If you notice excessive vibration, stop machine immediately. There is a nominal charge for straightening balancing rotor at Factory. Don't ruin the whole machine by operating "out of balance". Read operating instructions carefully.

The company also reserves the right to incorporate any changes in design without obligation to make these changes on units previously sold.

JACOBSEN MFG. CO.

Racine, Wisconsin

A Careful Operator

**IS THE BEST INSURANCE
AGAINST AN ACCIDENT.**

— NATIONAL SAFETY COUNCIL

FOREWARD

This manual has been prepared to aid you in assembling, operation maintenance, and the ordering of parts for your Swing Knife Blitzer.

The Swing Knife Blitzer is a flail and shredding type mower designed for mowing dense growths along highways, roughs, and areas where rugged cutting is a problem.

The Swing Knife Blitzer features a new cutting mechanism of special heavy duty free swing knives attached to a 3" diameter shaft parallel to the ground. Rotating at high speeds, the knives pulverize clippings before they reach the ground.

The Jacobsen Swing Knife Blitzer cuts a 6 foot swath and will fit any vehicle equipped with a rear mounted 540 P.T.O.

SPECIFICATIONS

Width of Cut: 6 foot swath.

Primary Drive: Fully enclosed level gear, chain from primary drive box shaft to 3" tubular P.T.O. shaft.

Gear Box: Special heavy duty; equipped with rugged Timken Roller Bearings. Oil flood lubricated.

Cutter Blades: 36 heat treated steel blades for extreme durability and safety.

P.T.O.: Heavy duty P.T.O. assembly with spinner type shield.

Model 113

Wheels: 2-15" Drop Center Wheels for maximum flotation. Takes any 15" low pressure tire (6.70 x 15 recommended).

Height of Cut: Variable - Adjusted by standard crank with hinged handle for safety lock position.

Accessories: Gauge Roller.

Weight: Approximately 800 lbs.

Model 114

Wheels: Caster Wheel - Solid rubber and fabric laminated industrial tire.

Height of Cut: Variable - Adjustable by locking position of 3 point lift on tractor.

Accessories: Gauge Roller - Caster Wheel extra long. P.T.O.

Weight: Approximately 750 lbs.

INSTALLATION INSTRUCTIONS

Model No. 113 - Pull Type: Attach unit only to a tractor with 540 R.P.M. P.T.O. with draw bar in P.T.O. position, fixed against swinging. Hitch hole should be approximately 14" back of end of P.T.O. shaft on tractor. Set hitch so P.T.O. is as straight as possible. Avoid sharp turns, abrupt slopes and abrupt entries into ditches and so on.

Model No. 114 - 3 Point Lift: Attach unit only to a tractor with a SAE category 1, 3 Point Lift with a 540 R.P.M. P.T.O. Attach lift linkage so P.T.O. is as straight as possible. Avoid sharp turns, abrupt slopes and abrupt entries into ditches and so on. Note: A longer P.T.O. is available for units being used with a tractor having a lift high enough to pull to standard P.T.O. apart.

When attaching unit to tractor specified, adjust 3 Point Lift stops on tractor so that the P.T.O. will not come apart when the SKB is lifted for higher cutting or transporting.

OPERATING INSTRUCTIONS

KNIVES:

The knives swing freely on a hardened steel bushing. A bolt and lock nut allow the knife assembly to be tightened securely to the rotor.

BE SURE THAT LOCK NUTS ARE TIGHT
AND THAT STEEL BUSHINGS ARE DRAWN
UP TIGHT SO THAT KNIFE SWINGS ON
BUSHING ONLY.

This is important to insure long life for the knife, bolt, and spacer clips.

The specially hardened knives are shaped to pick up and release the material freely. They have a sharpened edge to give a shear cut.

The alloy selected for the knife steel will hold a sharp cutting edge for a reasonably long time. However, under unusually rugged conditions the knives will become dull due to the extreme abrasive action, and should be sharpened when cutting action has been impaired. Broken or badly bent knives should be replaced immediately to maintain rotor balance and prolong the life of the machine. Do not operate machine with knives missing.

CHECK KNIVES DAILY BEFORE OPERATING MACHINE

ROTOR SHAFT:

All machines are tested at the factory for smooth operation. If machine vibrates when

all knives are on the rotor, it is an indication that the rotor has been bent. Vibration will damage other parts of the machine.

DO NOT OPERATE A VIBRATING MACHINE.

It takes a severe blow to damage the rotor. However, if anything should happen to it, replace it immediately.

The tractor P.T.O. should never exceed a top speed of 550 R.P.M.'s at any time.

SPROCKETS AND DRIVE:

Chain drive is used because it provides positive drive to rotor without the bothersome belt slippage caused by slug loads often accompanying this type of operation.

To adjust for chain wear follow this take up procedure:

Loosen bolts on gear box base and also bolts on outboard bearing next to drive sprocket. Adjust tension on chain just enough to take up slack. Move gear box forward same amount that outboard bearing is moved. Tighten outboard bearing and gear box down. This will allow these members to line up and eliminate any strain on gear box outboard shaft.

GAUGE ROLLER - OPTIONAL ACCESSORY:

This attachment is recommended for mowing on uneven ground especially on road sides. Set gauge roller so that it keeps knives from scalping the ground and then adjust cutting height of side wheels so roller only contacts ground when going over a ridge or crown.

CASTER WHEEL - OPTIONAL ACCESSORY:

This attachment is recommended for tractors without a positive lock on the 3 Point Lift to be used as the cutter height adjustment.

LUBRICATION

1. POWER TAKE OFF SHAFT:

Lubricate Universal Joints daily when in use. A light coat of grease should also be put on telescoping section inside shield.

2. DRIVE CHAIN:

In very dusty conditions do not oil drive chain. Under normal conditions the drive chain can be oiled once a week. Let the oil soak between the chain and then wipe off all of the excess oil on the chain and sprockets. Replace chain when it becomes too loose to take up.

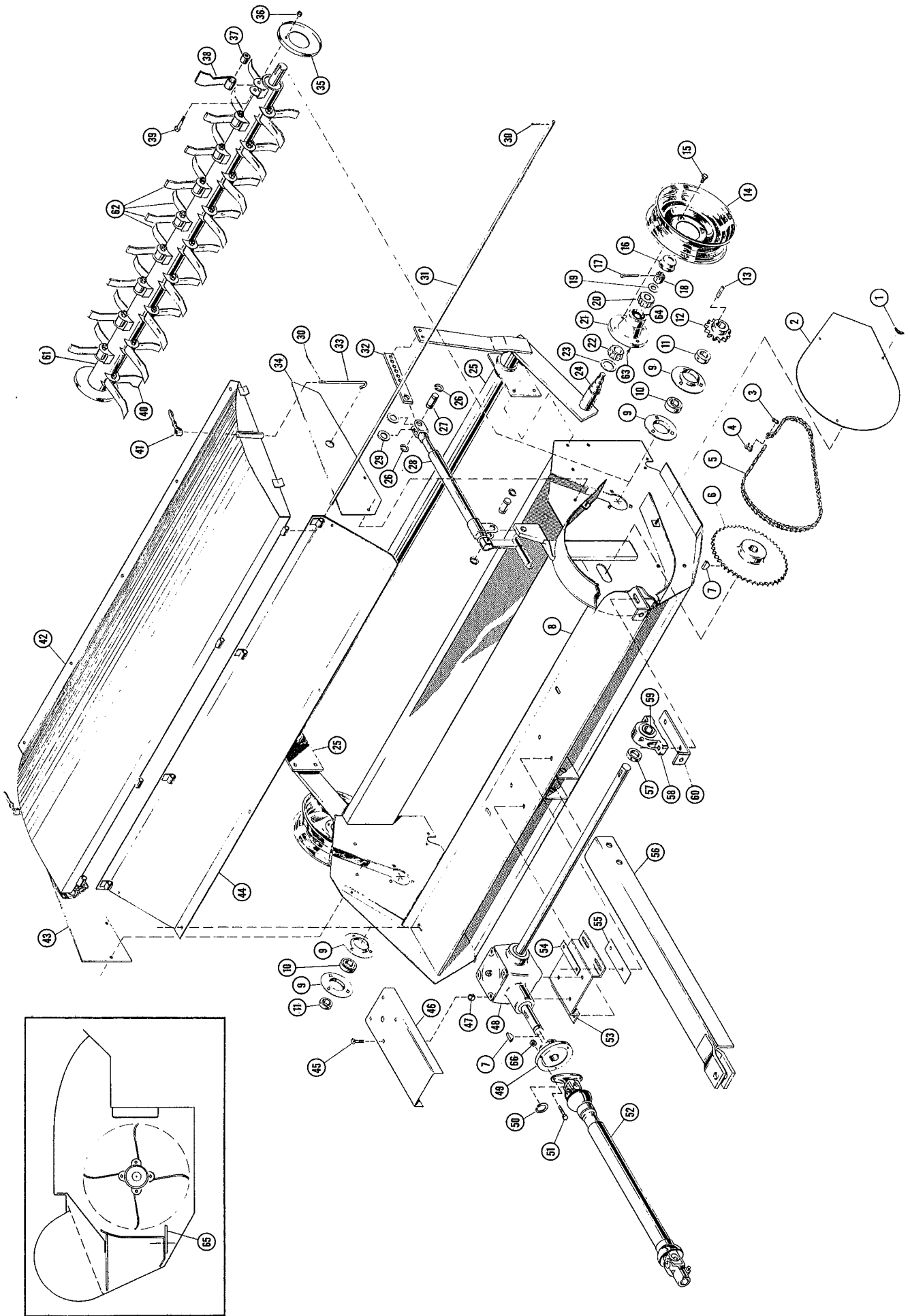
3. ROTOR SHAFT BEARINGS AND OUTBOARD BEARINGS.

Lubricate outboard bearing every 50 hours of operation. This is a self-aligning, sealed ball bearing. Too much grease will force the seal out which will lose grease and let dirt in. As long as the seals are intact, just a little bit of grease will let the bearing operate a long time. Rotor shaft bearings do not need greasing.

4. GEAR BOX:

Gear box is filled to the 1/2 full level with No. 90 oil at factory. Oil should be maintained at this level by making periodic checks.

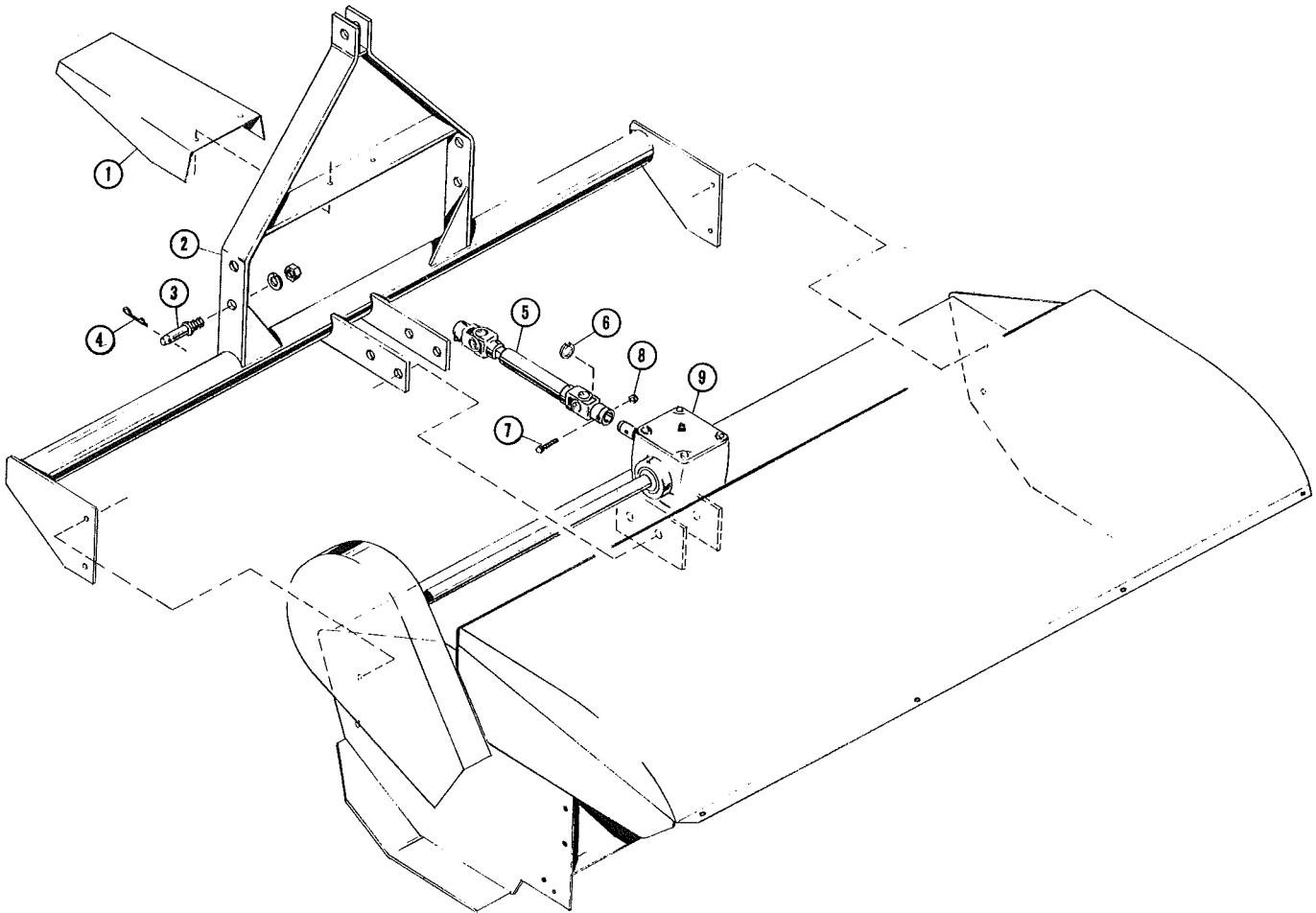
MODEL 113 - SWING KNIFE BLITZER ASSY.



MODEL 113 SWING KNIFE BLITZER PARTS LIST

Ref. No.	Part No.	Quan.	Description	Ref. No.	Part No.	Quan.	Description
1	1014766	3	5/16 - 18 Wing Nut	36	0018169	37	7/16-20 Lock Nut - (Knife, Pin & Shear Pin)
2	0026300	1	Chain Guard Side Plate	37	0017980	36	Knife Bushing
3 & 4	1016300	1	Connecting Link	38	1015201	1	End Knife, Left Hand
5	1016401	1	Chain	39	1018156	36	Knife Pin, 7/16-20 x 2-3/8 Lg. Hex Head Bolt
6	0018998	2	Drive Sprocket	40	1015200	1	End Knife, Right Hand
7	0018998	2	Woodruff Key, 3/8 x 1-1/4"	41	1015701	2	Clamping Handle - "J" Bolt
8	1010001	1	Body Weldment	42	1010010	1	Rear Cover Weldment
9	1016001	4	Stamping, Rotor Bearing	43	1014204	1	Rivht Rear Cover Bottom Side
10	1016002	2	Bearing - Rotor, 1-7/16 Bore	44	1010009	1	Face Plate Weldment
11	1016003	2	Lock Collar w/set Screw - Rotor Bearing	45	1014765	4	Gear Box Cover Bolt, 5/16-18 x 1-1/4 Lg.
12	1016400	1	Rotor Sprocket	46	0015590	1	Gear Box Guard
13	1016400	1	Key 3/8 x 3/8 x 1-1/4" Lg., Rotor Sprocket	47	0016601	4	Spacer - Guard
14	0018997	2	Wheel - Rim only, 15"	48	0017650	1	Gear Box - Complete
15	0018251	8	Lug Bolt - Wheel	49	0018250	1	Shear Flange
16	0019886	2	Hub Cap - Wheel	50	0018130	1	P.T.O. Snap Ring - 1-1/4"
17	0018252	2	Cotter Pin - Wheel Lock Nut	51	1016600	1	Shear Pin, 3/8-16 x 1-3/4" Lg. Sq. Head Bolt
18	0018253	2	Lock Nut - Wheel	52	1013404	1	P.T.O. Drive Shaft
19	0018254	2	Flat Washer - Wheel	53	1013360	1	Gear Box Mount
20	0016000	2	Outside Bearing Cone - Wheel	54	1014317	2	Gear Box Mount Batten Plate
21	0018995	2	Wheel Hub w/Bearing Cups Press in	55	1010008	1	Gear Box Mount Shim
22	0016001	2	Inside Bearing Cone - Wheel	56	0016000	1	Hitch Pole Weldment
23	0018991	2	Grease Seal - Wheel	57	1016000	1	Lock Collar w/Set Screw - Outboard Bearing
24	0018994	2	Wheel Spindle	58	1026000	1	Pillow Block and Bearing, 1-1/4" Shaft
25	1010006	1	Axle Weldment	59	1013522	1	Bearing Replacement Insert only, 1-1/4" Shaft
26	0008250	4	Ram Pin Snap Ring - 1"	60	1013522	1	Bearing Mount Adjusting Bar
27	0008230	4	Ram Pin 1" Dia. x 2-5/8 Lg.	61	1010011	1	Rotor Weldment - Less Knives
28	0001001	1	Mechanical Ram (Optional Accessory)	62	0018999	34	Knife "G" Type
29		2	1" Flat Washer	63	0026001	2	Inside Bearing Cup - Wheel
30		2	Cotter Pin, 1/8 x 1" Lg.	64	0026000	2	Outside Bearing Cup - Wheel
31	1013591	1	Hinge Rod	65	1033470	1	Cutter Bar - Optional Accessory on all SKB Models
32	1013590	1	Ram Mount Adj. Link	66	0018149	1	Nut - 3/8-16 - Hex Grip-co Lock
33	1015700	1	"J" Bolt				
34	1014205	1	Left Rear Cover Bottom Side				
35	1014652	2	Anti-Wrap Rotor				

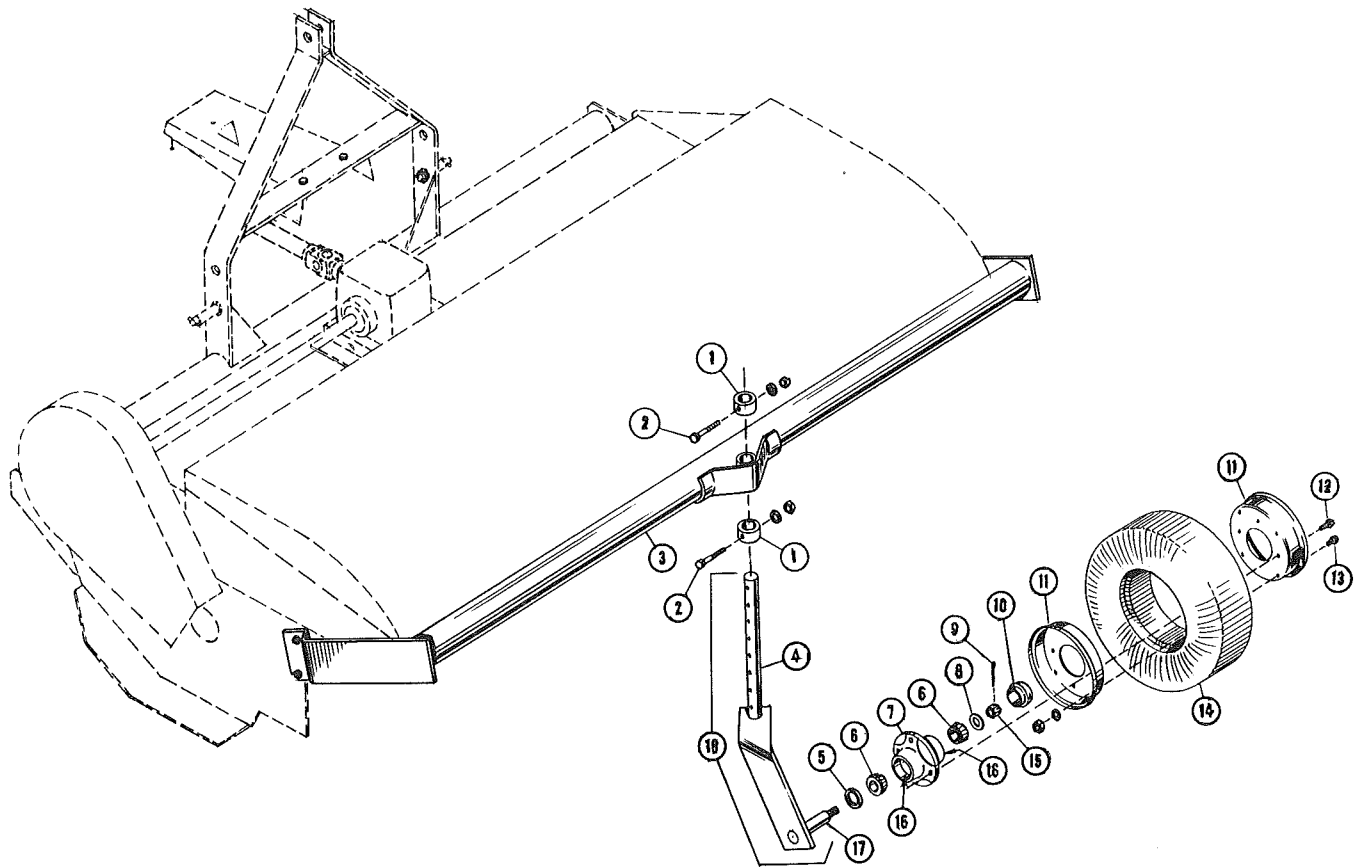
MODEL 114 SWING KNIFE BLITZER ASSY.



MODEL 114 SWING KNIFE BLITZER PARTS LIST

Ref. No.	Part No.	Quan.	Description
1	1014767	1	Guard - Power Shaft
2	1010015	1	Front Frame Weldment
3	1018253	2	Implement Pin w/Nut & Lock Washer - Category One
4	1018254	2	Safety Linen Pin
5	1016603	1	Power Shaft (See Note on Illustration)
6	0018250	1	1-1/4 Snap Ring - Power Shaft
7		1	Std. 3/8-16 x 2-1/2 Bolt - Shear Bolt
8	1018149	2	3/8-16 Lock Nut - Shear Bolt
9	1016602	1	Gear Box - Complete

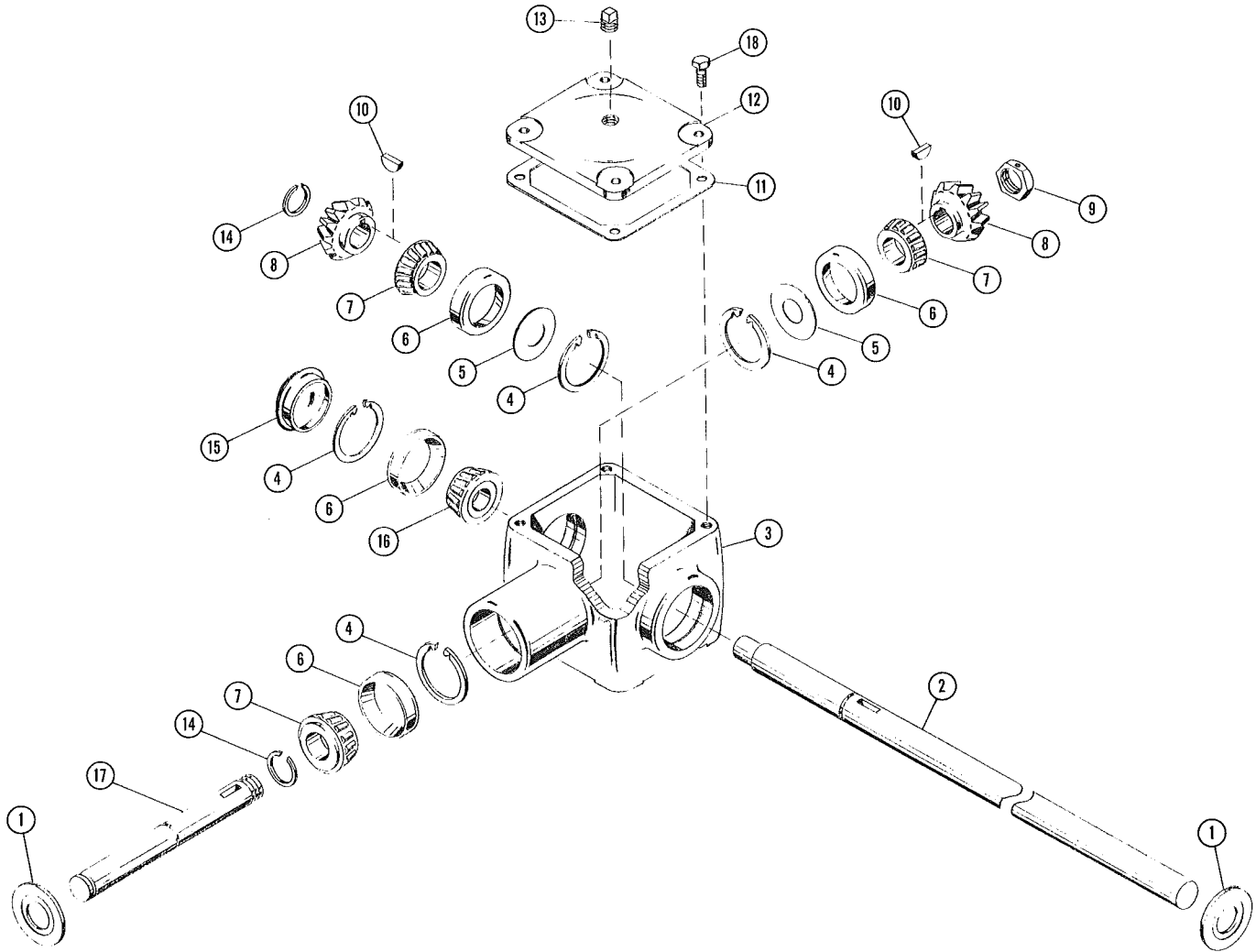
CASTER WHEEL ASSY.



CASTER WHEEL PARTS LIST

Ref. No.	Part No.	Quan.	Description
1	1035621	2	Lock Collar - Caster Shaft
2		2	Std. 3/8-16 x 2-3/4 Bolt w/Nut & Lock Washer
3	1030005	1	Caster Mounting Frame
4	1035060	1	Caster Shaft
5	1038996	1	Bearing Seal - Caster Wheel
6	1036001	2	Bearing Cone - Caster Wheel
7	1038997	1	Caster Wheel Hub w/Bearing Cups Pressed in
8	1038252	1	Washer - Caster Wheel Spindle
9	1038251	1	Cotter Pin - Caster Wheel Spindle Lock Nut
10	1038995	1	Hub Cap - Caster Wheel
11	1038998	2	Caster Wheel Rim - One Half
12		4	Std. N.F. 1/2-20 x 1 Bolt - Wheel Hub
13		4	Std. 3/8-16 x 3/4 Bolt w/Nut & Lock Washer
14	1038999	1	Caster Wheel Tire
15	1038250	1	Spindle Lock Nut - Caster Wheel
16	1026000	2	Bearing Cup - Caster Wheel
17	1038994	1	Caster Wheel Spindle
18	1030006	1	Caster Weldment

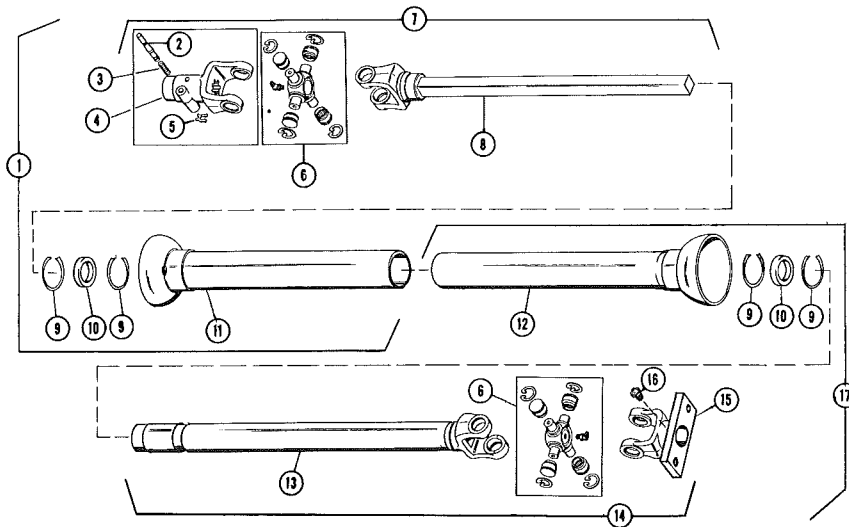
GEAR BOX



GEAR BOX PARTS LIST

Ref. No.	Part No.	Quan.	Description
1	1026602	2	Seal - Input & Output Shaft
2	1026601	1	Output Shaft
3	1027650	1	Gear Housing
4	1028251	4	Snap Ring - Bearing Retainer
5	1026604		Bearing Shim, As needed (Not in all Assm'b)
6	1026002	4	Bearing Cup
7	1026003	3	Bearing Cone
8	1026500	2	Bevel Gear
9	1028250	1	Lock Nut w/Set Screw
10	0018998	2	Woodruff Key - 3/8 x 1-1/4
11	0026600	1	Gasket - Cover
12	0027650	1	Cover
13	1026605	1	Plug - Vent
14	1028252	2	1-1/4" Snap Ring - Gear Retainer
15	1026603	1	Cap
16	1026004	1	Bearing Cone
17	1026600	1	Input Shaft
18		4	Bolt, 5/16-18 x 5/8 Lg., If #1014765 Guard is not used

POWER SHAFTS



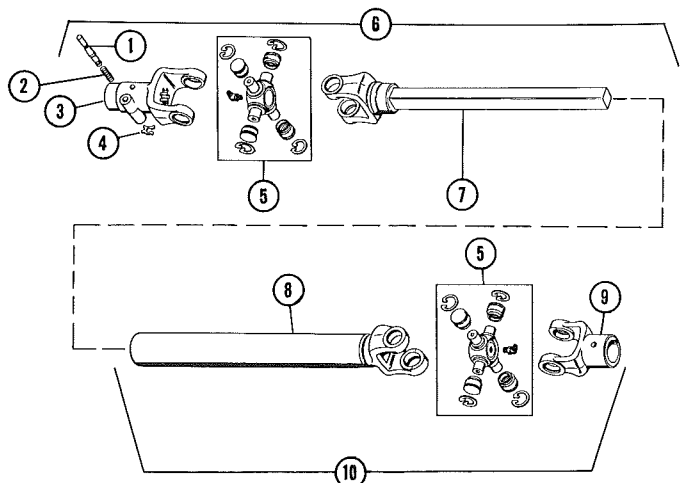
Model #113

PARTS LIST

Ref. No.	Part No.	Quan.	Description	Ref. No.	Part No.	Quan.	Description
1	1021000	1	Tractor Half Assembly with Guard	11	1020004	1	Female Guard Tube and Bell Weldment
2	0026601	1	Locking Pin	12	1020003	1	Male Guard Tube and Bell Weldment
3	0026602	1	Spring, Locking Pin	13	1020002	1	Female Shaft and Yoke Weldment
4	1027651	1	Quick Detachable Yoke Casting	14	1021004	1	Blitzer Half Assembly - Less Guard
5	0026603	1	"X" Washer, Locking Pin	15	1020005	1	Flanged Yoke Weldment
6	1021002	2	Universal Center Parts Kit	16	0026604	1	1/8 P.T. Straight Grease Fitting
7	1021001	1	Tractor Half Assembly - Less Guard	17	1021003	1	Blitzer Half Assembly with Guard
8	1020001	1	Male Shaft and Yoke Weldment		1016600	1	Power Shaft Complete
9	1028253	4	Snap Ring, Bearing Retainer				
10	1026001	2	Nylon Bearing Ring				

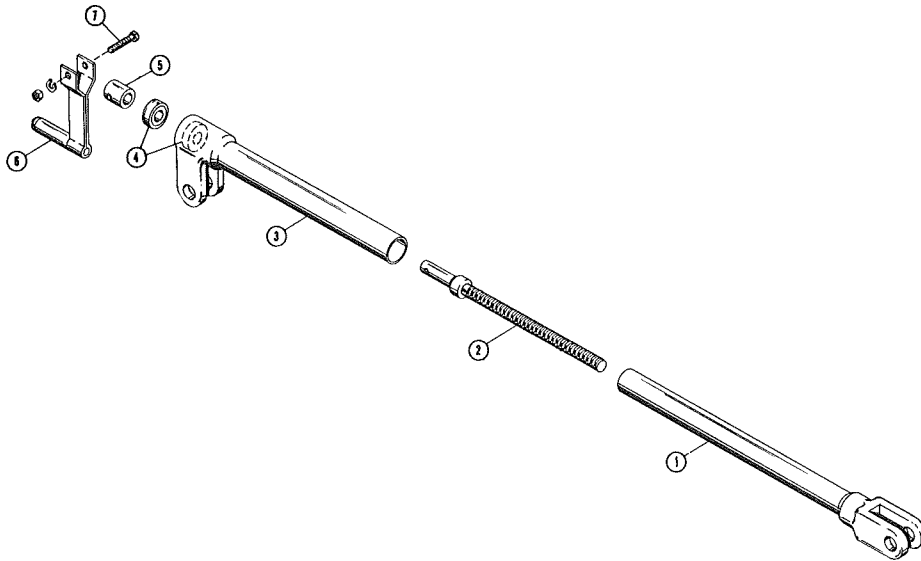
PARTS LIST

Ref. No.	Part No.	Quan.	Description
1	0026601	1	Locking Pin - Q.D. Yoke
2	0026602	1	Spring - Locking Pin
3	1027651	1	Quick Detachable Yoke Casting
4	0026603	1	"X" Washer - Locking Pin
5	1021002	2	Universal Center Parts Kit
6	1021006	1	Tractor Half Assembly
	1021008	1	Tractor Half Assy. (Special)
7	1020006	1	Male Shaft and Yoke Weldment
	1020008	1	Male Shaft and Yoke Weldment (Special)
8	1020007	1	Female Shaft and Yoke Weldment
	1020009	1	Female Shaft and Yoke Weldment (Special)
9	1027652	1	Straight Yoke Casting w/Shear Bolt Hole
10	1021007	1	Blitzer Half Assembly
	1021009	1	Blitzer Half Assembly (Special)



Model #114

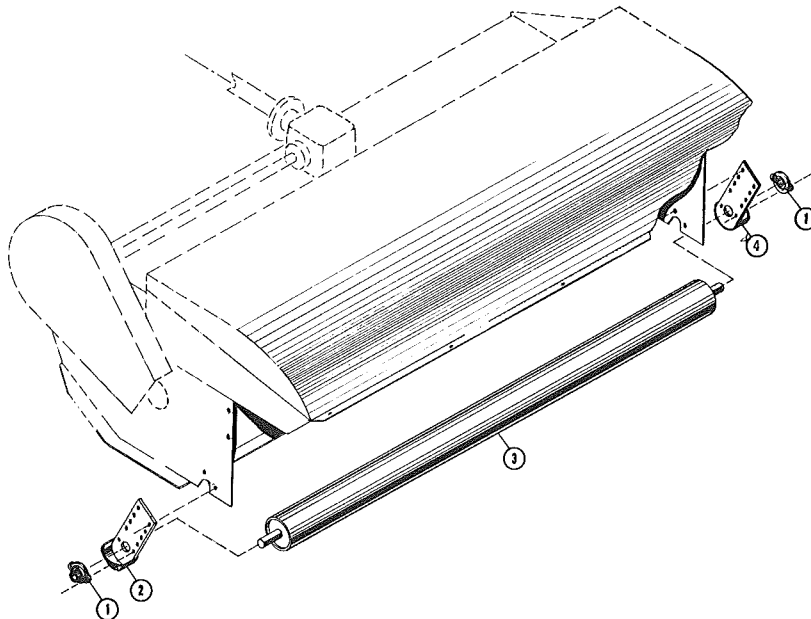
MECHANICAL RAM ASSY.



MECHANICAL RAM PARTS LIST

Ref. No.	Part No.	Quan.	Description
1	0000001	1	Ram Floating End
2	0000002	1	Ram Screw
3	0000003	1	Ram Fixed End w/Bearing Inside
4	0006000	2	Thrust Bearing - Ram
5	0007983	1	Ram Retainer Sleeve
6	0000004	1	Ram Handle
7		1	3/8-16 x 3-1/4 Bolt w/Nut and Lock Washer

GAUGE ROLLER ASSY.



GAUGE ROLLER PARTS LIST

Ref. No.	Part No.	Quan.	Description
1	1036000	2	Bearing and Flange
2	1030004	1	Left Roller Mounting Bar
3	1030001	1	Roller Weldment
4	1030003	1	Right Roller Mounting Bar