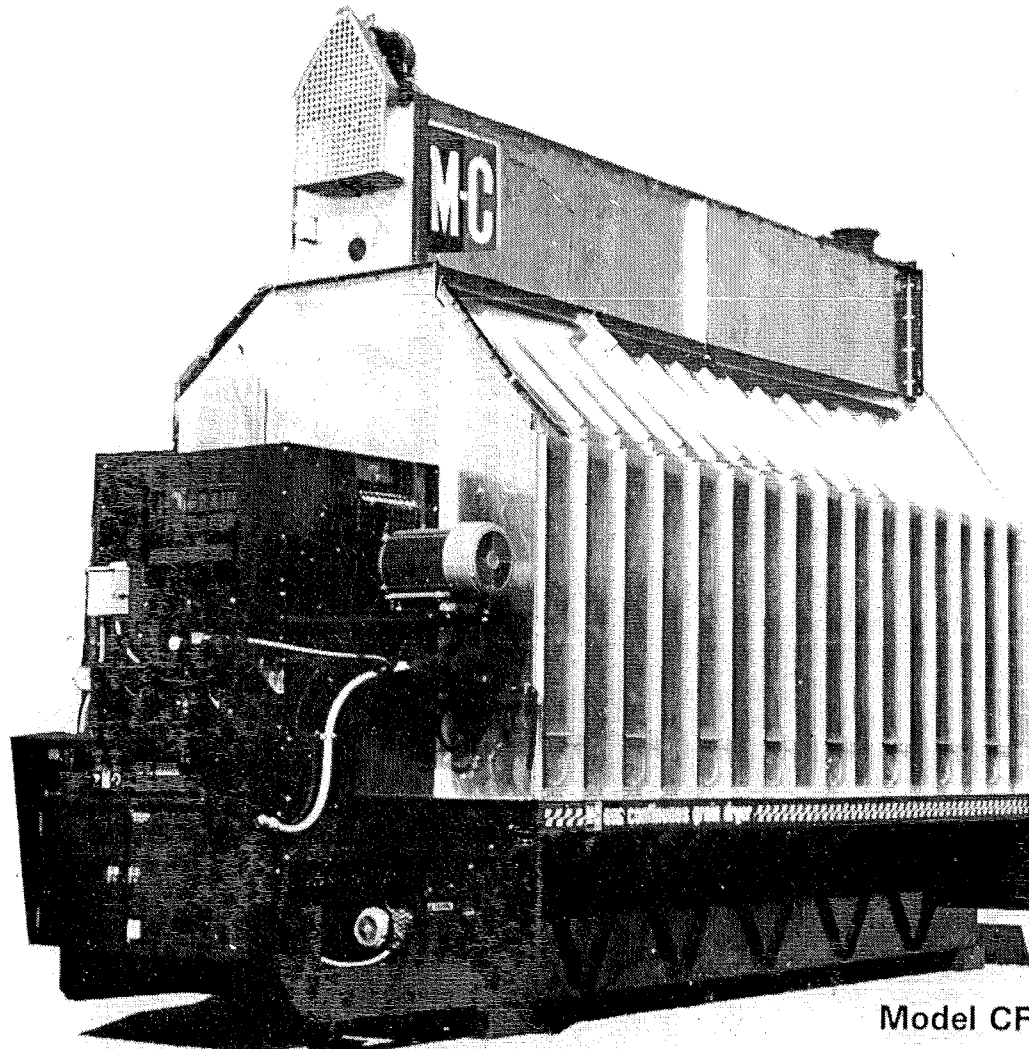


\$6.50



INFINITY SERIES
Models CF620C & CF820C
(EM and EMS)
Continuous Flow Grain Dryers
(Starting w/Serial No. 58393)

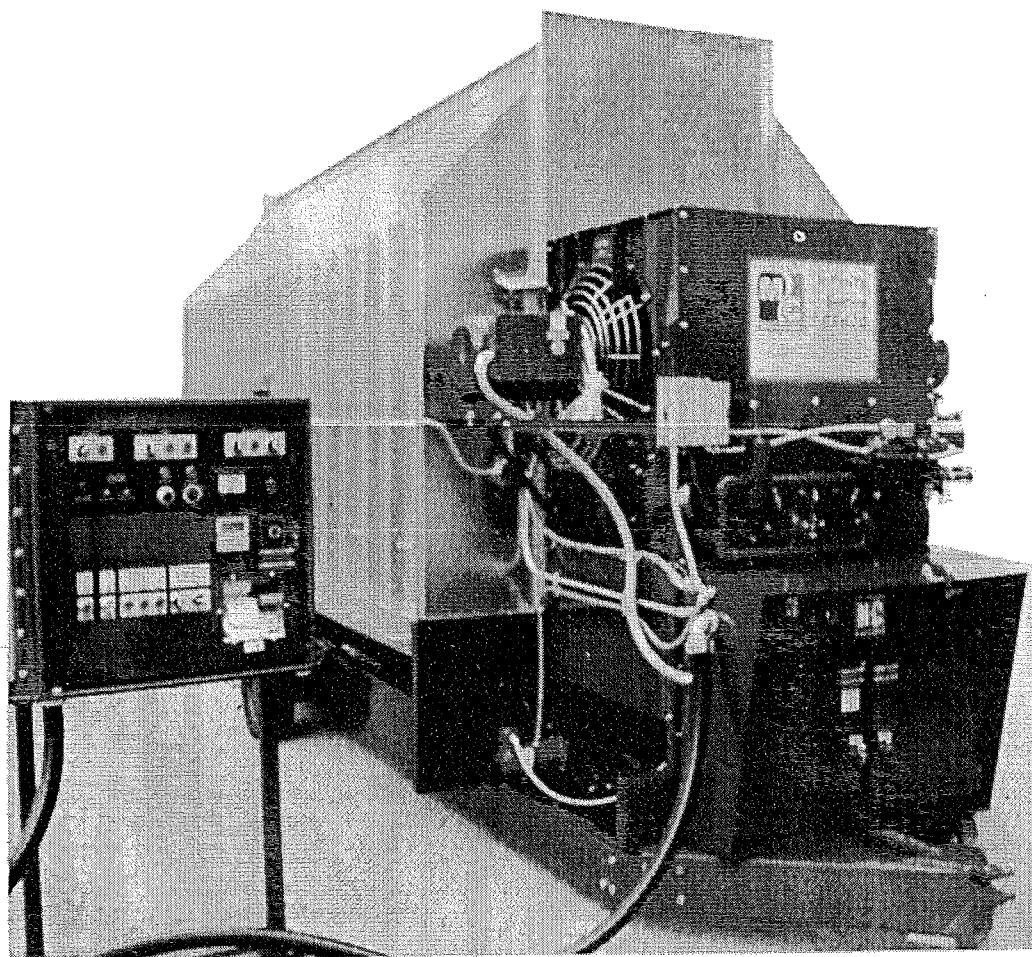


Model CF620C

PARTS CATALOG

Form No. D378-1
Revised January 1, 2005

Mathews Company / 500 Industrial Avenue
P.O. Box 70, Crystal Lake, IL 60039-0070, U.S.A.
815/459-2210 FAX 815/459-5889
www.mathewscompany.com



CONTENTS

| | Page |
|--|---------|
| Introduction | |
| Parts Ordering Instructions..... | 1 |
| Model and Serial Number Location | 1 |
| Capscrew Grade Identification | 1 |
| Parts | |
| Air Pressure Switch | 27 |
| Augers | |
| Level | 28-31 |
| Unload..... | 2-6 |
| Unload Extension Kits..... | 35 |
| Belts | |
| Level Auger..... | 28-29 |
| Unload Auger | 14 |
| Burner (Venturi)..... | 14-15 |
| Cabinets | |
| 115V Remote Cabinet Inside Door | 18 |
| 115V Remote Cabinet Mounting Board with Components | 19 |
| Base Section Motor Control Cabinet 620/820..... | 20-21 |
| Circuit Breakers | |
| Level Auger, Unload Auger and Fan Motor(s) - Base Section Cabinet..... | 32-33 |
| Coils | |
| Gas Vapor 1¼" (31.8mm) Solenoid Valve | 17 |
| Gas Vapor ¾" (19mm) Low Fire Solenoid | 16 |
| Liquid Propane Line ½" (12.7mm) Solenoid Valve | 16 |
| Control Panel Lights, Switches and Controls - Remote Cabinet | 18 |
| Decals..... | 21 & 23 |
| Electrical Components in 115V Remote Cabinet | 19 |
| Electrical Components in 115V Base Section Control Cabinet | 22 |
| Electrical Components in Base Section Motor Control Cabinet..... | 20-21 |
| Electrical Components List..... | 34 |
| End & Floor Panels 620 & 820C..... | 10-11 |
| Fan(s), Motor(s) & Motor Mounts | 23-24 |
| Fan Housing, Decals, and Guards | 23 |
| Fan Housing Supports and Thermometer..... | 26 |
| Flame Sensing Probe..... | 14-15 |
| Guards | |
| Fan..... | 23 |
| Level Auger Motor..... | 28-29 |
| SCR Drive | 12-13 |
| High Limit Switch..... | 27 |
| Hopper (Wet Holding) 620 & 820 | 28-31 |

Continued on next page

| | Page |
|--|---------|
| Ignition Board | 13 |
| Ignition Wires..... | 13-14 |
| Level Auger | 28-31 |
| Belts | 28-29 |
| Motor..... | 28-29 |
| Motor Mount..... | 28-29 |
| Switch Assembly (Wet Hopper Level Indicator)..... | 27-31 |
| Lights, Control Panel | 18 & 22 |
| LP Gas Liquid Line Manifold..... | 17 |
| LP Gas Manifold..... | 17 |
| Low Fire Manifolds, LP & Natural Gas | 16 |
| Manifolds | |
| LP Gas | 16 |
| Natural Gas..... | 17 |
| Metering Rolls 620/820..... | 2-5 |
| Modulating Valves | 17 |
| Modulating Valve Power Elements..... | 17 |
| Modulating Valve Repair Kits..... | 17 |
| Moisture Control | |
| Potentiometer..... | 18 |
| Moisture Control Board | 19 |
| Thermistor Sensor | 27 |
| Motors..... | 32-33 |
| Natural Gas Manifold..... | 17 |
| Portabilities (Optional) | 36 |
| Pressure Gauge (Gas) | 17 |
| Pressure Regulator - High (LP Gas) | 17 |
| Pressure Regulator - High (LP Gas) Repair Parts..... | 17 |
| Relay (Main) | 19 |
| Relief Valve - LP Gas Liquid Line..... | 17 |
| SCR Drive Unload System | |
| Control Board..... | 19 |
| Motor and Gear Box..... | 12 |
| Multi Dial with Lock | 18 |
| Potentiometer..... | 18 |
| Screens | |
| Base Screens..... | 7 |
| Upper Screens | 8-9 |

Continued on next page

| | Page |
|--|--------------|
| Solenoid Valves | |
| 1¼" (31.8mm) - Burner Manifolds..... | 17 |
| ½" (12.7mm) - LP Gas Liquid Line..... | 16 |
| ¾" (19mm) Low Fire..... | 16 |
| Solenoid Valve Repair Kits..... | 17 |
| Switches, Control Panel..... | 18 |
| Terminal Tracks..... | 19, 19A & 22 |
| Thermistor Sensor..... | 27 |
| Thermometer - Mechanical..... | 26 |
| Thermometer - Digital..... | 18 |
| Timers | |
| 0 to 3 Minute Adjustable - Level Auger..... | 19 |
| 60 Minute Adjustable - Low Grain Level and Cold Grain..... | 19 |
| Transformers - 460/575 to 115 Volt..... | 21 |
| Unload Auger 10" (25.4cm) | |
| Auger..... | 4 |
| Belts..... | 12 |
| Extension Kits (Optional) 2 ft. (.61m), 4 ft. (1.22m), or 6 ft. (1.83m)..... | 37 |
| Motor..... | 12 |
| Pans..... | 6 |
| Unload Shut Off Switch..... | 2, 5 & 34 |
| Vaporizer Coil - LP Gas - 620C & 820C..... | 14 |
| Walkway (Optional)..... | 37 |

Wiring Diagrams

NOTES

INTRODUCTION

Parts Ordering Instructions

1. Order parts from your local M-C Dealer or distributor.
2. Always furnish the Grain Dryer model and serial number. This information is stamped on the serial number plate.
3. When ordering parts be sure to furnish the part number, description and quantity required.

NOTE: Attaching hardware is listed, but not included with, the main part. It must be ordered separately.

4. Inspect all shipments upon receipt. If any packages and/or boxes are missing, or parts are damaged, file a claim with the carrier immediately. Failure to do so may void a claim. Check the shipment against the packing list carefully. Report any shortages to the shipper immediately.

5. Do not return any parts to the Mathews Company without a "Return Goods Authorization" from the factory. All return parts shipments must be shipped prepaid (COD shipments will not be accepted). Shipments must also include the following:

- A. A letter of explanation including the "Return Goods Authorization, Number," your name and address.
- B. A list of all parts being returned. List must include part numbers, description, quantity, and original invoice number.

Model and Serial Number Location

The model and serial number of your Grain Dryer are stamped on a plate located on the left front end

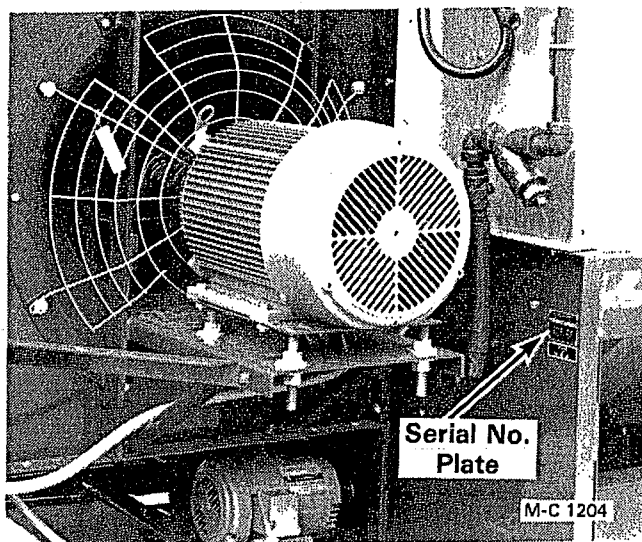


Figure 1

| M-C FARM EQUIPMENT | |
|--------------------|------------|
| MODEL NO. | SERIAL NO. |
| | |

Figure 2

panel, see Figure 1. On late production dryers, the plate is on the dryer front base panel just below the location shown in Figure 1. Record the model and serial number in the blank spaces in Figure 2.

Capscrew Grade Identification

There are four grades of hex-head capscrews. Grade 1 and 2 are common capscrews, grade 5 and 8 are used when greater strength is required. Each grade can be identified by the marking on the head of the capscrew, see chart below.

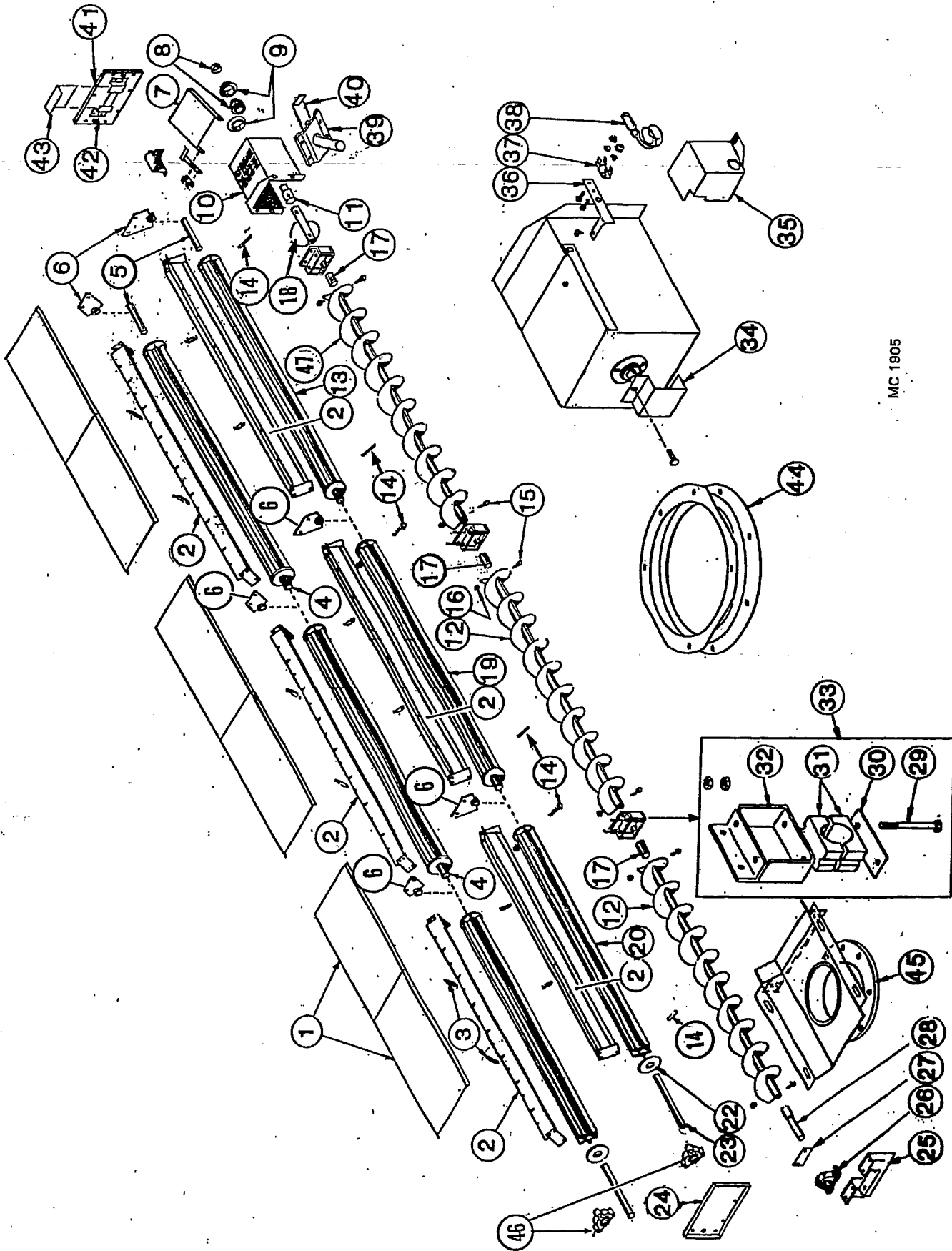
When replacing capscrews, be sure to use the correct size and grade. If a specific grade is not shown as part of the description, the capscrew is a grade 1 or 2.

CAPSCREW GRADE IDENTIFICATION CHART

| S.A.E. Grade | Description | Capscrew Head Marking* |
|--------------|---|------------------------|
| 1 | WILL HAVE A PLAIN HEAD - NO RADIAL LINES | |
| 2 | Low or Medium Carbon Steel Not Heat Treated | |
| 5 | WILL HAVE 3 RADIAL LINES Quenched and Tempered Medium Carbon Steel | |
| 8 | WILL HAVE 6 RADIAL LINES Quenched and Tempered Special Carbon or Alloy Steel | |

*The center marking identifies the capscrew manufacturer.

Models CF620C & CF820C
Metering Rolls and Unload Auger



MC 1905

Models CF620C & CF820C
Metering Rolls and Unload Auger

16 ft. 24 ft.
(4.9m) (7.3m)

| Ref. | Part No. | Qty. | Description |
|------|----------|------|--|
| 1 | 128 2890 | 4 | Unload Auger Cover |
| | 001 8111 | 8 | 5/16-18 (7.9mm) Clip Nut |
| | 001 8114 | 8 | 5/16-18x3/4" (7.9x19mm) Wing Screw |
| | 000 8173 | 8 | 5/16" (7.9mm) Flatwasher |
| 2 | 128 0350 | 4 | Inner Screen Mount |
| | 001 8202 | 18 | 5/16-18 x 3/4" (7.9 x 19mm) Hex Washer Head Bolt |
| | 000 8169 | 18 | 5/16-18 (7.9mm) Flanged Locknut |
| 3 | 128 8958 | 8 | Support Rod 3/8" x 4 3/8" (9.5 x 111mm) |
| | 000 8173 | 8 | 5/16" (7.9mm) Flatwasher |
| | 000 8168 | 24 | 3/8-16 (9.5mm) Flanged Locknut |
| 4 | 121 5043 | 2 | Rear & Center Metering Roll Shaft - 1 1/4" x 7" (3.2 x 17.8cm) |
| 5 | 121 5042 | 2 | Rear Metering Roll Stub Shaft - 1 1/4" x 5" (3.2 x 12.7cm) |
| 6 | 128 1063 | 4 | Metering Roll Brg. w/Bronze Bushing |
| | 001 8202 | 8 | 5/16-18 x 3/4" (7.9 x 19mm) Hex Washer Head Bolt |
| | 000 8169 | 8 | 5/16-18 (7.9mm) Flanged Locknut |
| 7 | 124 2884 | 1 | Over Load Door |
| | 001 8210 | 2 | 3/8-16 x 3/4" (9.5 x 19mm) Hex Washer Head Bolt |
| | 000 8205 | 2 | 3/8-16 (9.5mm) Top Lock Flanged Nut |
| 8 | 001 6003 | 1 | 1 1/4" (31.75mm) Bearing w/Lock Collar |
| | 001 6004 | 2 | 1 1/4" (31.75mm) Bearing Flangette |
| | 001 8269 | 3 | 3/8-16 x 1" (9.5 x 25.4mm) Carriage Bolt |
| | 000 8168 | 3 | 3/8-16 (9.5mm) Flanged Locknut |
| 10 | 128 0421 | 1 | Unload Auger Discharge Round (Front Unload - See Note 1) |
| | 001 8210 | 6 | 3/8-16 x 3/4" (9.5 x 19mm) Hex Washer Head Bolt |
| | 000 8205 | 6 | 3/8-16 (9.5mm) Top Lock Flanged Nut |
| | 000 8137 | 2 | 1/2-13 x 1 1/4" (12.7x31.75mm) Hex Bolt-Grd.5 |
| | 000 8180 | 2 | 1/2" (12.7mm) Lockwasher |
| | 000 8163 | 2 | 1/2-13 (12.7mm) Hex Nut |

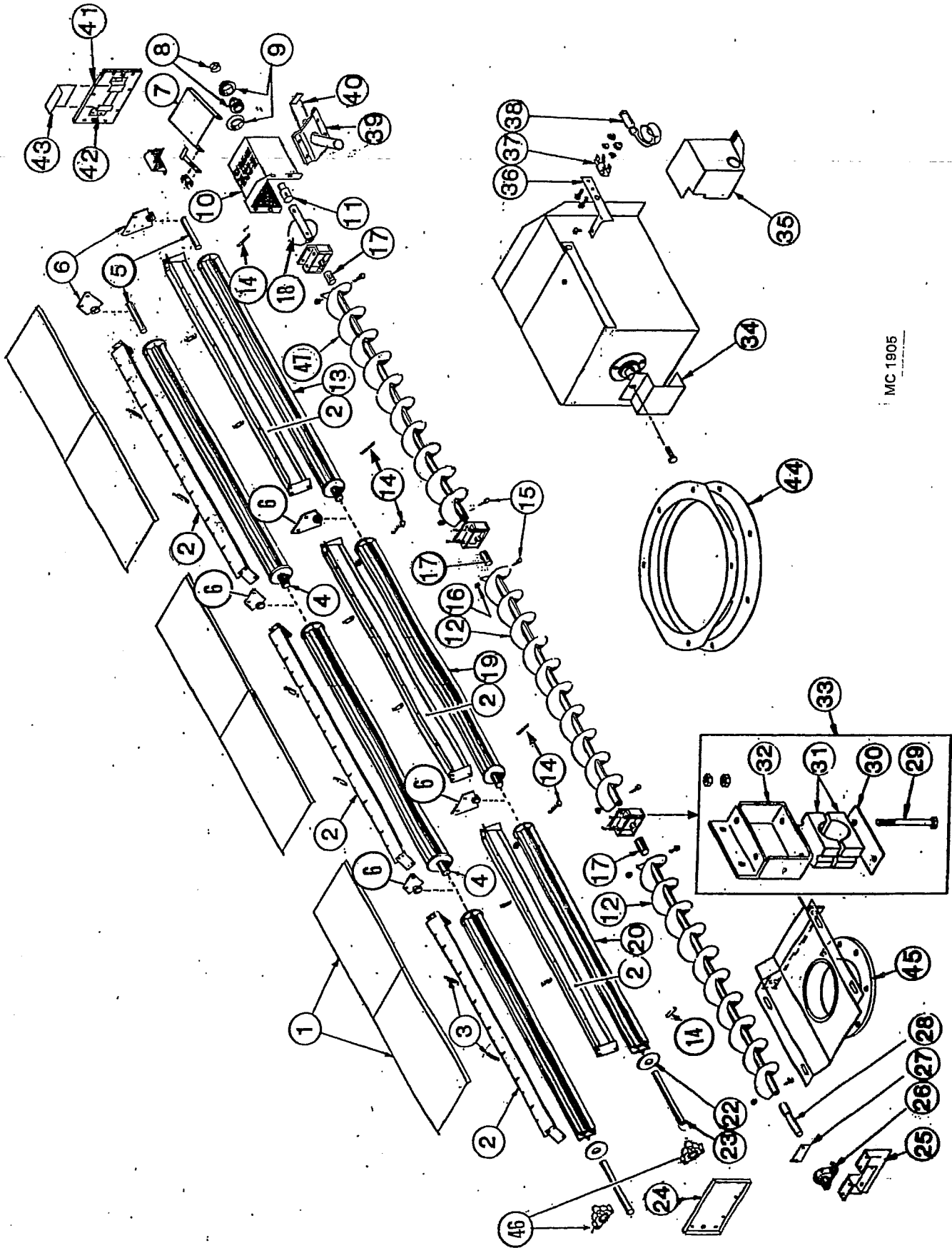
16 ft. 24 ft.
(4.9m) (7.3m)

| Ref. | Part No. | Qty. | Description | |
|------|----------|------|---|---|
| 11 | 124 5611 | 1 | Unload Auger Output Shaft (Front Unload - See Note 1) | |
| 12 | 128 0244 | 1 | Front & Center Unload Auger Section 10" (25.4cm) | |
| 13 | 121 1082 | 2 | Rear Metering Roll Assembly (incl. shafts) | |
| 14 | 000 8114 | 8 | 5/16-18x 2 1/2" (7.9x63.5mm) Capscrew | |
| | 000 8222 | 8 | 5/16" (7.9mm) Lockwasher | |
| | 000 8159 | 8 | 5/16-18 (7.9mm) Hex Nut | |
| 15 | 000 8229 | 8 | 3/8-16 X 2 3/4" (9.5 x 70mm) Capscrew-Grd.5 | |
| 16 | 000 8205 | 8 | 3/8" (9.5mm) Top Lock Flanged Nut | |
| 17 | 128 5618 | 2 | 3 | Unload Auger Link 1-5/16 x 9 3/8" (49.2mm x 23.8cm) |
| 18 | 128 0309 | 1 | 1 | Standard Auger Weld |
| 19 | 121 1083 | - | 2 | Center Metering Roll Assembly w/shafts |
| 20 | 128 5784 | 2 | 2 | Front Metering Roll |
| 22 | 121 4438 | AR | AR | Metering Roll Washer - 11 Gauge |
| | 128 4970 | AR | AR | Metering Roll Washer - 16 Gauge |
| 23 | 128 5054 | 2 | 2 | Front Metering Roll Shaft - 1 1/4" x 6 1/4" (3.18 x 15.9cm) |
| 24 | 128 2894 | 1 | 1 | Base Panel Access Door - 17 1/2" x 10 1/2" (44.5 x 27cm) |
| | 001 8284 | 14 | 14 | 5/16-12 x 1/2" (7.9 x 12.7mm) Self Tapping Screw |
| 25 | 128 0247 | 1 | 1 | Unload Auger Front Plate |
| | 001 8210 | 4 | 4 | 3/8-16 x 3/4" (9.5 x 19mm) Hex Washer Head Bolt |
| | 000 8168 | 4 | 4 | 3/8-16 (9.5mm) Flanged Locknut |

NOTE 1: Dryers w/Front Unload - Ref. 10 use 127 4431 and Ref. 11 use 128 5994 output shaft.

Continued on next page

Models CF620C & CF820C
Metering Rolls and Unload Auger



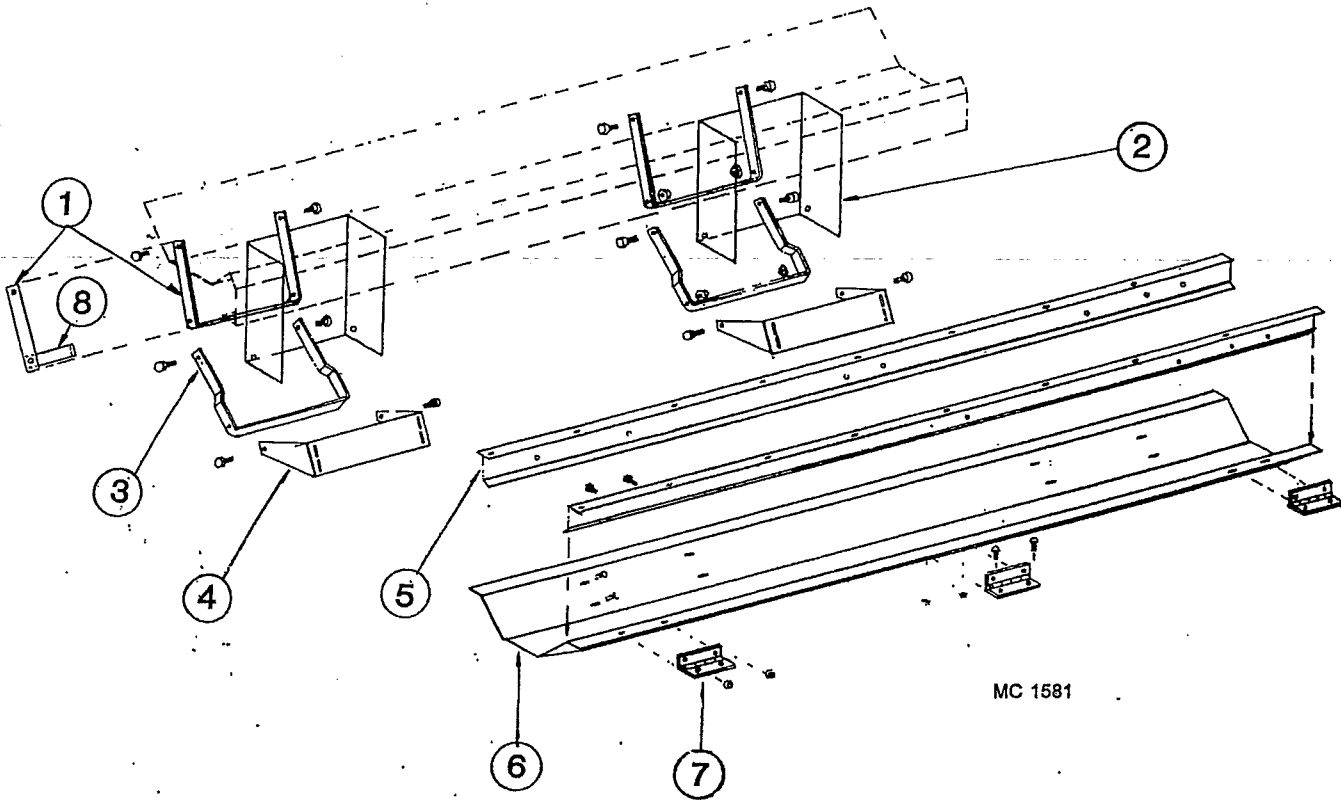
MC 1905

Models CF620C & CF820C
Metering Rolls and Unload Auger

16 ft. 24 ft.
 (4.9m) (7.3m)

| Ref. Part No. | Qty. | Description |
|---------------|----------|--|
| 26 | 001 6011 | 1 1-7/16" (36.5mm) Bore Pillow Block Bearing |
| | 001 8299 | 2 2 1/2-13 x 1 3/4" (12.7 x 44.5mm) Capscrew-Grd. 8 w/Nylock |
| | 001 8257 | 2 2 1/2" (12.7mm) SAE Flatwasher |
| | 000 8163 | 2 2 1/2-13 (12.7mm) Hex Nut |
| 27 | 128 3008 | 1 1 Front Seal Plate |
| | 000 8184 | 4 4 8-18 x 1/2" (12.7mm) Sheet Metal Screw |
| 28 | 124 5610 | 1 1 Unload Auger Input Shaft 1-5/16 x 9 3/8" (49.2mm x 23.8cm) Tapered at front to 1-7/16" (36.5mm) |
| 29 | 001 8168 | 4 6 1/2-13 x 4 1/2" (12.7 x 114.3mm) Capscrew - Grd. 5 |
| | 000 8163 | 8 12 1/2-13 (12.7mm) Hex Nut |
| 30 | 128 0285 | 2 3 Unload Auger Support Weld |
| 31 | 128 6020 | 2 3 Wood Bearing 1-15/16" (49.2mm) (2 Halves) |
| 32 | 128 0287 | 2 3 Unload Auger Bearing Bracket |
| | 000 8137 | 4 6 1/2-13 x 1 1/4" (12.7 x 31.75mm) Capscrew - Grd. 5 |
| | 000 8180 | 4 6 1/2" (12.7mm) Lockwasher |
| | 000 8163 | 4 6 1/2-13 (12.7mm) Hex Nut |
| 33 | 122 1007 | 2 3 Unload Auger Bearing Kit (Incl. Ref. 30 thru 33 in quantities required for one bearing) |
| 34 | 128 3011 | 1 1 Output Shaft Guard |
| 35 | 128 4896 | 1 1 Shut Off Switch Cover |
| | 001 8284 | 2 2 5/16-12 x 1/2" (7.9 x 12.7mm) Self-Tapping Screw |
| 36 | 128 2937 | 1 1 Switch Mount |
| 37 | 120 6801 | 1 1 Switch Mount Clip |
| | 000 8282 | 2 2 6-32 x 1/4" (6.35mm) Machine Screw |
| | 000 8185 | 2 2 6-32 Flanged Locknut |
| 38 | 120 6800 | 1 1 Shut Off Switch |
| 39 | 128 0379 | 1 1 Grain Sampler |
| 40 | 128 2883 | 1 1 Slide Gate Door - Sampler |
| 41 | 128 2954 | 1 1 Base Panel Access Door w/Slot |
| 42 | 128 2885 | 2 2 Access Door Bracket |
| 43 | 128 2887 | 1 1 Access Door Slot Cover |
| 44 | 128 0343 | 1 1 Discharge Ring 10" (25.4cm) |
| 45 | 128 0331 | 1 1 10" (25.4cm) Front Unload Weldment (Optional Kit #127 9119) |
| 46 | 001 6016 | 2 2 1 1/4" (31.8mm) 3 Bolt Flange Bearing S/N #57386 & Up |
| | 000 8120 | 6 6 3/8-16 x 1" (9.5 x 25.4mm) Round Truss Head Bolt |
| | 000 8205 | 6 6 3/8-16 (9.5mm) Top Lock Flange Nut |
| 47 | 128 0351 | 1 1 Rear Unload Auger Section 10" (25.4cm) w/Monitor Cut-Out |

UNLOAD AUGER PANS

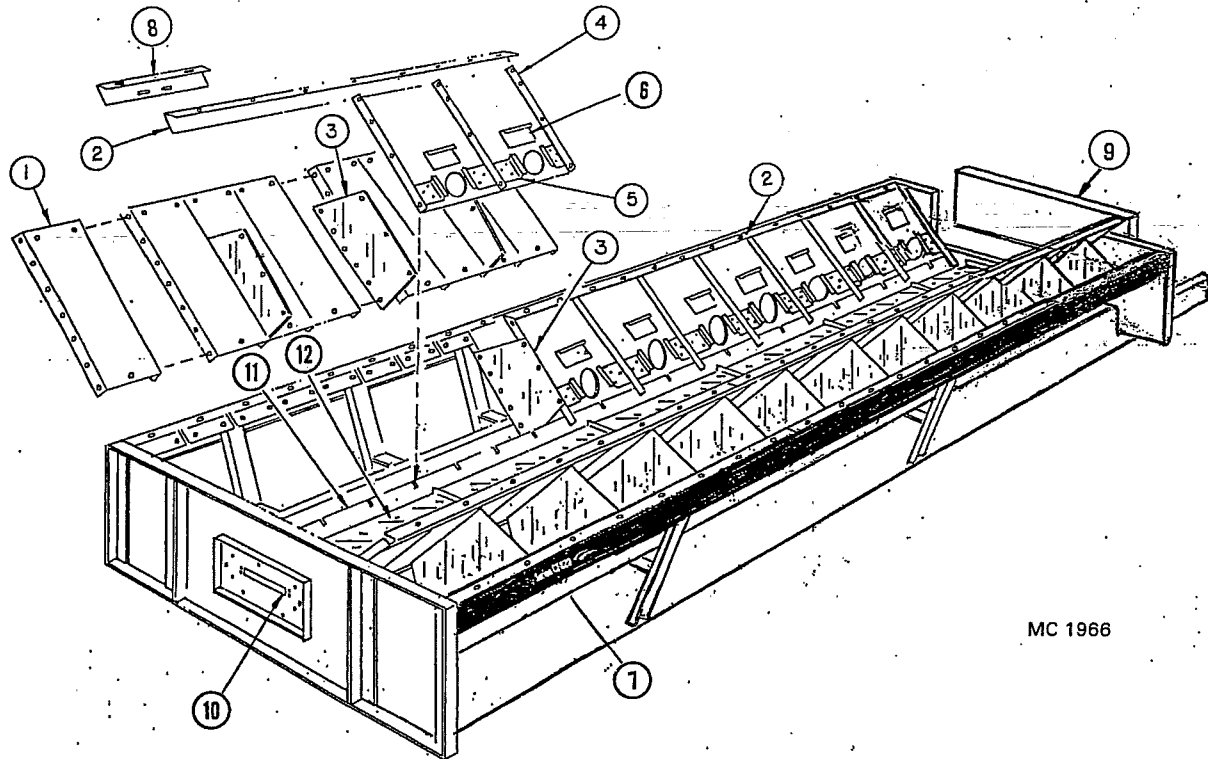


2 WARNING DECAL
 MOUNTS ON SIDE
 OF BRACKET

16 ft. 24 ft.
 (4.9m) (7.3m)

| Ref. | Part No. | Qty. | Qty. | Description |
|------|----------|------|------|----------------------------------|
| 1 | 128 2029 | 4 | 6 | Auger Dump Arm – Upper |
| 2 | 128 8355 | 4 | 6 | Warning Decal (not shown) |
| 3 | 138 2030 | 4 | 6 | Auger Dump Arm – Lower |
| 4 | 128 2751 | 4 | 6 | Bottom Link Pivot Base |
| 5 | 128 2673 | 4 | 6 | Pan Hinge Angle |
| 6 | 128 2752 | 1 | 2 | Front & Center Auger Dump Pan |
| | 128 0351 | 1 | 1 | Rear Auger Pan w/Monitor Cut-Out |
| | 128 3015 | 1 | 1 | Monitor Cut-Out Seal Plate |
| 7 | 128 8957 | 6 | 9 | Hinge |
| 8 | 128 2032 | 4 | 6 | Auger Dump Arm Handle |

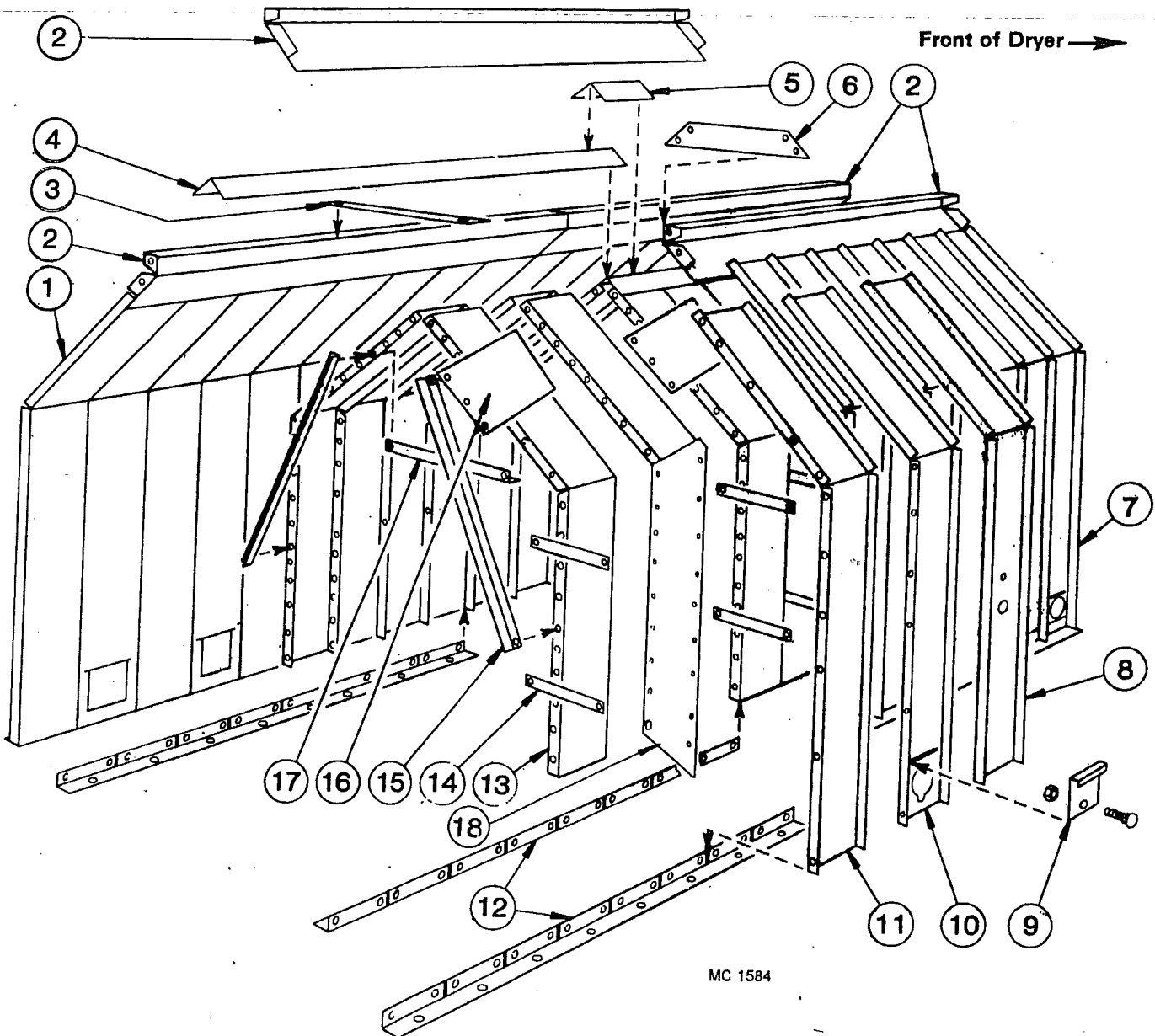
BASE SECTION LOWER SCREENS



MC 1966

| Ref. | Part No. | 8 ft. 16 ft. 24 ft. | | | Description | Ref. | Part No. | 8 ft. 16 ft. 24 ft. | | | Description |
|------|----------|---------------------|--------|--------|--|------|----------|---------------------|--------|--------|---|
| | | (2.4m) | (4.9m) | (7.3m) | | | | (2.4m) | (4.9m) | (7.3m) | |
| 1 | ----- | - | - | - | Lower Outer Screen | 8 | 129 3070 | - | 2 | 4 | Seal Angle |
| | 123 5215 | 16 | 32 | 48 | Standard Aluminum - 3/32" | 9 | 128 4570 | 1 | 1 | 1 | Base Filler Panel-37x13 1/2" |
| | 127 2945 | 16 | 32 | 48 | Small Seed (Galv.) - 1/16" | | 001 8209 | 12 | 12 | 12 | 5/16 x 1" (9.5 x 25.4mm) Hex Washer Head Bolt Grd. 5 |
| | 123 5320 | 16 | 32 | 48 | Stainless - 3/32" (2.38mm) | | | | | | |
| | 124 2003 | 16 | 32 | 48 | Canola (Galv.) - .050" (1.29mm) | 10 | 128 2954 | 1 | 1 | 1 | Base Panel Access Door w/Slot |
| 2 | 128 2739 | 2 | 4 | 6 | Lower Screen Mount Angle | | 001 8284 | 7 | 7 | 7 | 5/16-18x1/2" (7.9 x12.7mm) Self-Tapping Screw |
| 3 | 128 2855 | 6 | 14 | 22 | Lower Screen Stiffener | 11 | 128 0350 | 2 | 4 | 6 | Inner Screen Mount |
| 4 | ----- | - | - | - | Lower Inner Slope Screen w/Clean-Out - 24"(61cm) wide | | 001 8202 | 12 | 18 | 24 | 5/16-18 x 3/4" (7.9x19mm) Hex Washer Head Bolt |
| | 124 2000 | 8 | 16 | 24 | Standard Galvanized - 3/32" | | 000 8169 | 12 | 18 | 24 | 5/16-18 (7.9mm) Flanged Locknut |
| | 124 2001 | 8 | 16 | 24 | Small Seed (Galv.) -1/16" (1.59mm) | 12 | 128 2890 | 2 | 4 | 6 | Unload Auger Cover |
| | 124 2026 | 8 | 16 | 24 | Canola (Galv.) - .050" (1.29mm) | | 001 8111 | 4 | 8 | 12 | 5/16-18 (7.9mm) Clip Nut |
| 5 | 124 2866 | 16 | 32 | 48 | Slope Door Retainer | | 001 8114 | 4 | 8 | 12 | 5/16-18 x 3/4" (7.9 x 19mm) Wing Screw |
| | 000 8244 | 48 | 96 | 144 | 8-18 x 1/2" (12.7mm) Hex Head Sheet Screw | | 000 8173 | 4 | 8 | 12 | 5/16" Flatwasher |
| 6 | 128 3003 | 8 | 16 | 24 | Slope Door | | | | | | |
| 7 | ----- | - | - | - | Model Decal | | | | | | |
| | 128 8801 | 2 | - | - | Decal Infinity Series "320" | | | | | | |
| | 128 8804 | - | 2 | - | Decal Infinity Series "520" | | | | | | |
| | 128 8805 | - | 2 | - | Decal Infinity Series "620" | | | | | | |
| | 128 8806 | - | 2 | - | Decal Infinity Series "720" | | | | | | |
| | 128 8808 | - | - | 2 | Decal Infinity Series "820" | | | | | | |

UPPER SCREENS



MC 1584

UPPER SCREENS

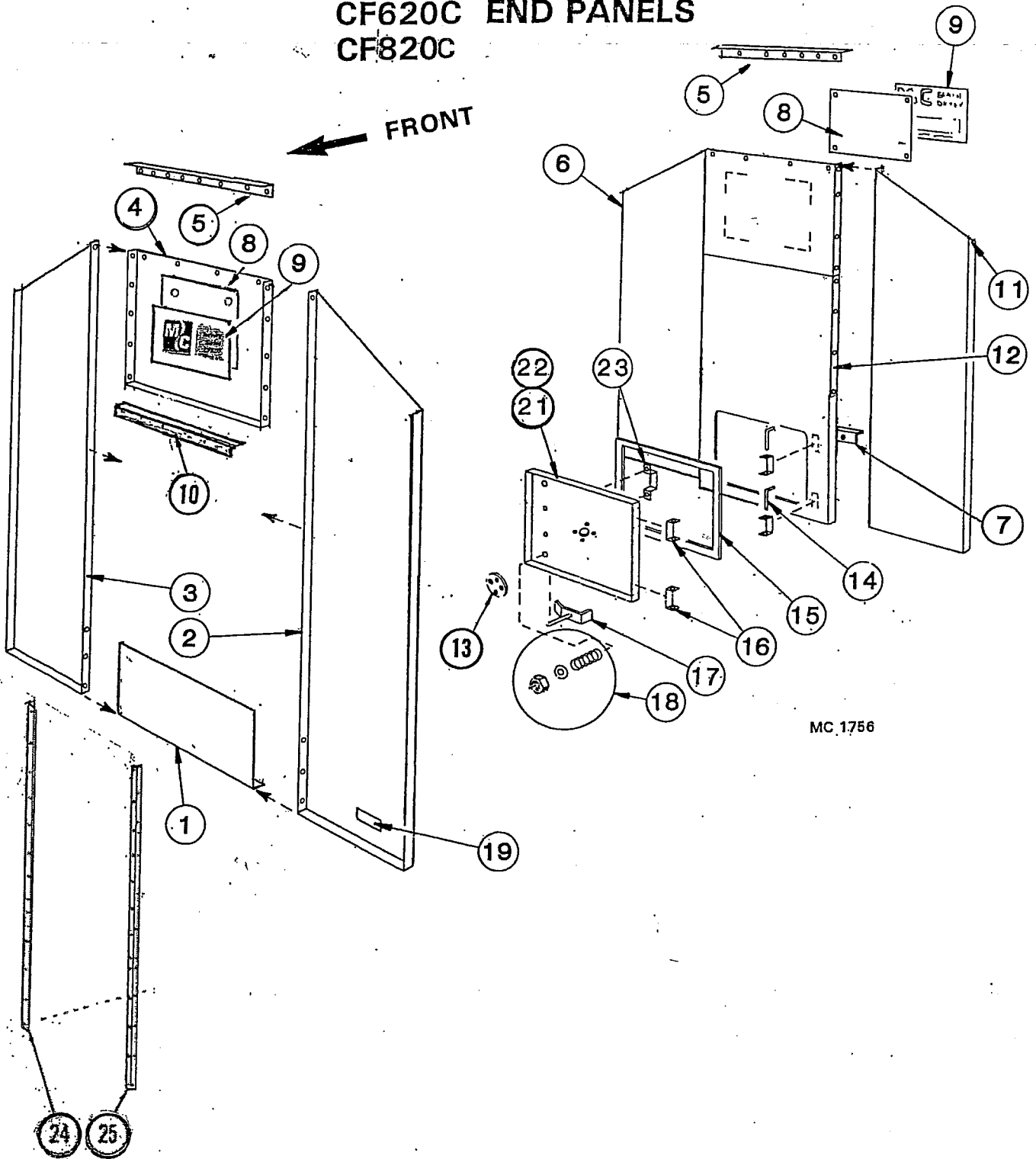
| Ref. | Part No. | 8 ft. | 16 ft. | 24 ft. | Description |
|------|----------|-------|--------|--------|---|
| | | Qty. | Qty. | Qty. | |
| 1 | ---- | - | - | - | Outer End Screen w/o Quick Drain |
| | 021 2946 | 2 | 2 | 2 | Standard (Galvanized) 3/32" (2.38mm) Holes |
| | 127 2967 | 2 | 2 | 2 | Small Seed (Galvanized) 1/16" (1.59mm) Holes |
| | 124 2013 | 2 | 2 | 2 | Canola (Galvanized) .050" (1.27mm) Holes |
| | 123 5213 | 2 | 2 | 2 | Aluminum 3/32" -.094" Holes |
| 2 | 129 2832 | 2 | 4 | 6 | Hopper Joiner Angle 3/32" (2.38mm) Holes |
| | 124 2014 | 2 | 4 | 6 | Hopper Joiner Angle .050" (1.27mm) Holes-Small Seed Screens |
| 3 | 129 2947 | 1 | 2 | 3 | Stiffener Strap |
| 4 | 021 2950 | 1 | 2 | 3 | Hopper Cap |
| 5 | 128 3075 | - | 1 | 2 | Seal Angle |
| 6 | 129 2831 | - | 1 | 2 | Joiner Plate |
| 7 | ---- | - | - | - | Outer End Screen w/Quick Drain |
| | 128 3002 | 2 | 2 | 2 | Standard (Galvanized) |
| | 127 2963 | 2 | 2 | 2 | Small Seed (Galvanized) |
| | 124 2012 | 2 | 2 | 2 | Canola (Galvanized) .050" (1.27mm) Holes. |
| | 123 5210 | 2 | 2 | 2 | Aluminum |
| 8 | ---- | - | - | - | Moisture Control Screen |
| | 021 2947 | 1 | 1 | 1 | Standard (Galvanized) |
| | 127 2966 | 1 | 1 | 1 | Small Seed (Galvanized) |
| | 124 2013 | 1 | 1 | 1 | Canola (Galvanized) .050" (1.27mm) Holes |
| | 123 5214 | 1 | 1 | 1 | Aluminum |
| 9 | ---- | - | - | - | Quick Drain Door |
| | 127 2950 | 8 | 16 | 24 | Standard (Galvanized) |
| | 127 2974 | 8 | 16 | 24 | Small Seed (Galvanized) |
| | 127 2995 | 8 | 16 | 24 | Canola (Galvanized) .050" (1.27mm) Holes |
| | 000 8310 | 8 | 16 | 24 | 3/8-16 x 3/4" (9.5x19mm) Carriage Bolt-Stainless |
| | 000 8168 | 8 | 16 | 24 | 3/8-16 (9.5mm) Flanged Locknut |
| 10 | ---- | - | - | - | Outer Screen w/Quick Drain |
| | 128 3001 | 6 | 14 | 22 | Standard (Galvanized) |
| | 127 2965 | 6 | 14 | 22 | Small Seed (Galvanized) |
| | 124 2012 | 6 | 14 | 22 | Canola (Galvanized) .050" (1.27mm) Holes |
| | 123 5212 | 6 | 14 | 22 | Aluminum |
| 11 | ---- | - | - | - | Outer Screen w/o Quick Drain |
| | 021 2945 | 5 | 13 | 21 | Standard (Galvanized) |
| | 127 2964 | 5 | 13 | 21 | Small Seed (Galvanized) |
| | 124 2013 | 5 | 13 | 21 | Canola (Galvanized) .050" (1.27mm) Holes |
| | 123 5211 | 5 | 13 | 21 | Aluminum |
| 12 | 125 2732 | 4 | 8 | 12 | Screen Mount Angle |
| 13 | ---- | - | - | - | Inner Screen |
| | 021 2949 | 16 | 32 | 48 | Standard (Galvanized) 3/32" (2.38mm) Holes |
| | 127 2968 | 16 | 32 | 48 | Small Seed (Galvanized) 1/16" (1.59mm) Holes |
| | 124 2005 | 16 | 32 | 48 | Canola (Galvanized) .050" (1.27mm) Holes |
| 14 | 121 3007 | 28 | 60 | 92 | Stiffener Strap |
| 15 | 128 2663 | 6 | 14 | 22 | Inner Brace |
| 16 | 128 3072 | 6 | 14 | 22 | Peak Screen Stiffener |
| 17 | 021 2600 | 3 | 7 | 11 | Inner Cross Tie |
| 18 | 128 3076 | - | 2 | 4 | Divider Panel |

Hardware to Bolt Screens Together:

| | | | |
|----------|----------|-------------------------------|---|
| Inside: | 001 8208 | 5/16-18 x 1/2" (7.9 x 12.7mm) | Washer Head Hex Bolt |
| | 001 8202 | 5/16-18 x 3/4" (7.9 x 19.0mm) | Washer Head Hex Bolt |
| | 000 8103 | 5/16-18 x 1/2" (7.9 x 12.7mm) | Slotted Truss Round Head Bolt |
| | 000 8169 | 5/16" (7.9mm) | Flanged Whiz Locknut |
| Outside: | 000 8305 | 5/16-18 x 1/2" (7.9 x 12.7mm) | Washer Head Hex Bolt-Stainless |
| | 000 8308 | 5/16-18 x 1/2" (7.9 x 12.7mm) | Slotted Truss Round Head Bolt-Stainless |
| | 000 8307 | 5/16-18 x 3/4" (7.9 x 19.0mm) | Slotted Truss Round Head Bolt-Stainless |
| | 000 8304 | 5/16" (7.9mm) | Flanged Whiz Locknut-Stainless |

CF620C END PANELS CF820C

FRONT ←



MC 1756

CF620C END PANELS CF820C

| Ref. | Part No. | Qty. | Description |
|------|----------|------|---|
| 1 | 126 2834 | 1 | Panel Below Fan Housing |
| 2 | 124 2875 | 1 | Left Front Panel |
| 3 | 124 2874 | 1 | Right Front Panel |
| 4 | 126 2832 | 1 | Panel Above Fan |
| 5 | 124 2615 | 2 | End Panel to Hopper Jrn Angle |
| 6 | 124 2877 | 1 | Right Rear End Panel |
| 7 | 124 4463 | 1 | Brace-Rear Door Panel |
| 8 | 128 2999 | 1 | Decal Mount Plate |
| 9 | 128 8311 | 1 | Model "620" Decal |
| 10 | 128 2644 | 1 | Fan Housing Mount Angle |
| 11 | 124 2876 | 1 | Left Rear End Panel |
| 12 | 128 2771 | 1 | Rear Door Panel 96" x 37" (244x92cm) |
| 13 | 129 5709 | 1 | Port View Lens |
| | 000 8212 | 4 | ¼-20 x ½" (6.35x12.7mm) Truss Head Screw |
| | 000 8167 | 4 | ¼"-20 (6.35mm) Flanged Locknut |
| 14 | 128 5201 | 2 | Hinge Pin |
| 15 | 128 8900 | AR | Rubber Edge Seal/ft. |
| 16 | 128 2740 | 4 | Door Hinge |
| | 000 8212 | 8 | ¼-20 x ½" (6.35x12.7mm) Truss Head Screw |
| | 000 8167 | 8 | ¼-20 (6.35mm) Flanged Locknut |
| 17 | 121 8901 | 2 | Latch and Handle |
| 18 | 001 8256 | 2 | Spring-5/8"IDx2"(15.9x51mm) |
| | 000 8174 | 4 | 3/8" (9.5mm) Flatwasher |
| | 001 8149 | 2 | 3/8" (9.5mm) Hex 2-Way Locknut |
| 19 | 121 8310 | 1 | "Made in USA" - Decal |
| 20 | Blank | | |
| 21 | 128 1183 | 1 | Rear Door Assembly (Incl. ref. 13, 15 thru 18, 22, & 23) |
| 22 | 128 2957 | 1 | Rear Door Panel Only |
| 23 | 121 2887 | 1 | Door Handle |
| | 128 8257 | 2 | 8-18 x ½" (12.7mm) Sheet Metal Screw |

SCR Drive Motor and Gear Box

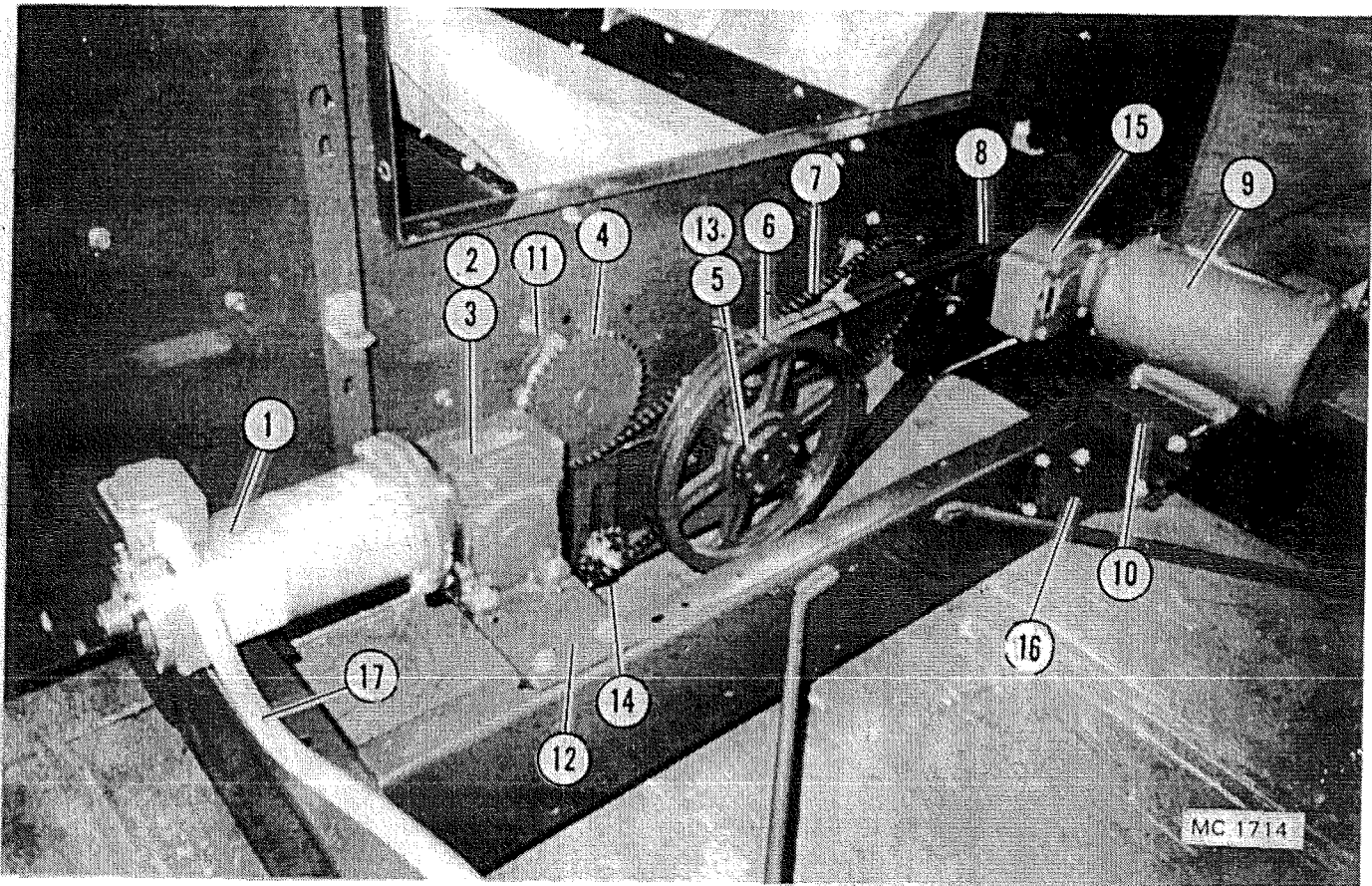


Figure 3

| Ref. Part No. | Qty. | Description | Ref. Part No. | Qty. | Description |
|---------------|----------|--|---------------|--------------------------------------|---|
| 1 | 124 6837 | 1 DC Motor - 1/3 HP | 8 | 121 6203 | 1 Pulley - 2B - 3-3/16" OD - |
| | 122 8613 | - DC Motor Brush | | 001 5112 | 1 Key - 3/16" x 1 1/8" (4.8x35mm) |
| 2 | 124 6624 | 1 SCR Gear Box (Incl. 3/16" x 1" Key - 001 5110) | 9 | 124 6627 | - 1.5HP 10 230V Motor |
| | 128 8947 | 1 Pint of Mobil SHC 634 Oil | | 124 6626 | - 1.5HP 30 230/460V Motor |
| | 001 8212 | 4 3/8-16x1 1/4" Capscrew-Washer Hd. | | 124 6628 | - 1.5HP 30 575V Motor |
| | 000 8174 | 4 1/8" Flatwasher | 128 1810 | 1 Motor to Cabinet Wire Assembly | |
| | 000 8168 | 4 3/8" Flanged Locknut | 000 8110 | 1 5/16-18x1 1/2" (7.9x38mm) Capscrew | |
| 3 | ----- | - SCR Gear Box Sprocket | 001 8213 | 3 5/16-18x1" (7.9x25.4mm) Capscrew | |
| | 128 6427 | 1 RC-40 10Tx3/4" ID - 320/520/620/720 | 000 8173 | 4 5/16" (7.9mm) Flatwasher | |
| | 128 6422 | 1 RC-40 12Tx3/4" (19mm) ID - 820 | 000 8169 | 4 5/16-18 Flanged Locknut | |
| 4 | ----- | - Metering Roll Sprocket | 10 | 124 4214 | 1 Unload Auger Motor Mount |
| | 128 6406 | 2 RC-40 42Tx1 1/4" ID - 320/520/620/720 | 001 8209 | 2 3/8-16 x 1" Capscrew-Washer Hd. | |
| | 128 6423 | 2 RC-40 36Tx1 1/4" (31.8mm) ID - 820 | 001 8210 | 3 3/8-16 x 3/4" Capscrew-Washer Hd. | |
| | 000 8298 | 2 Woodruff Key 1/4"x3/4" (6.35x19mm) | 001 8132 | 1 3/8-16 x 4" (9.5x102mm) "J" Bolt | |
| 5 | 021 6201 | 1 Pulley - 2B x 13.6 SK | 000 8174 | 5 1/8" (9.5mm) Flatwasher | |
| | 001 5130 | 1 Key - 3/8" x 1" (9.5x25.4mm) | 000 8168 | 5 3/8-16 (9.5mm) Flanged Locknut | |
| 6 | 021.6100 | 1 B-65 Belts (Matched Set-2) | 11 | 001 6016 | 2 1 1/4" (31.8mm) 3 Bolt Flange Bearing |
| 7 | 128 6316 | 1 Chain - RC-40 x 152 Pitch | 12 | 128 0367 | 1 SCR Gear Box Mount |
| | 002 6309 | - Connecting Link | | 001 8210 | 4 3/8-16 x 3/4" Capscrew-Washer Hd. |
| | | | | 000 8174 | 4 1/8" (9.5mm) Flatwasher |
| | | | | 000 8168 | 4 3/8-16 (9.5mm) Flanged Locknut |

Continued on next page

SCR Drive Motor and Gear Box

| Ref. | Part No. | Qty. | Description |
|------|----------|------|--|
| 13 | 001 6202 | 1 | SK Bushing - 1-7/16" (36.5mm) I.D. (Incl. capscrews) |
| 14 | 128 6414 | 1 | Idler Sprocket 18T x 1/2" (12.7mm) |
| 15 | 124 6620 | 1 | Gear Box - Unload Auger Motor (620/720/820) |
| 16 | 124 4485 | 1 | Discharge Motor Mount Bracket |
| 17 | 128 | 1 | SCR Motor to Cabinet Flexible Conduit 3/8" x 43" (9.5mm x 109cm) with 45° Elbow & Straight Connectors |
| 18 | 128 0370 | 1 | Drive Guard - Wire |
| | 001 3302 | 2 | Angle Clip |
| | 000 8202 | 4 | 5/16-16 x 3/4" (7.9 x 19mm) Washer Head Bolt |
| | 000 8173 | 2 | 5/16" (7.9mm) Flatwasher |
| | 001 8184 | 2 | 5/16" (7.9mm) Clip Nut |
| | 000 8169 | 2 | 5/16" (7.9mm) Whiz Locknut |
| 19 | 121 8957 | AR | Rubber Guard Edge |
| 20 | | 1 | Unload Auger Motor to Cabinet Flexible Conduit with (2) Straight Connectors 1Ø 3/8" x 40" (9.5mm x 96cm) 3Ø 1/2" x 40" (12.7mm x 96cm) |

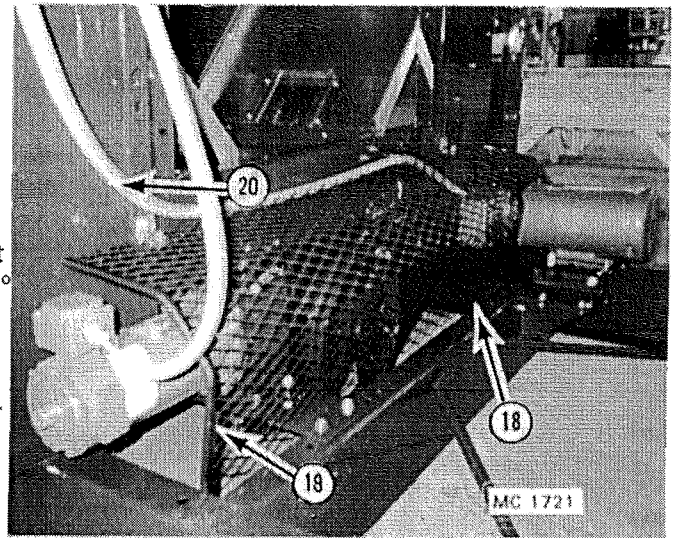
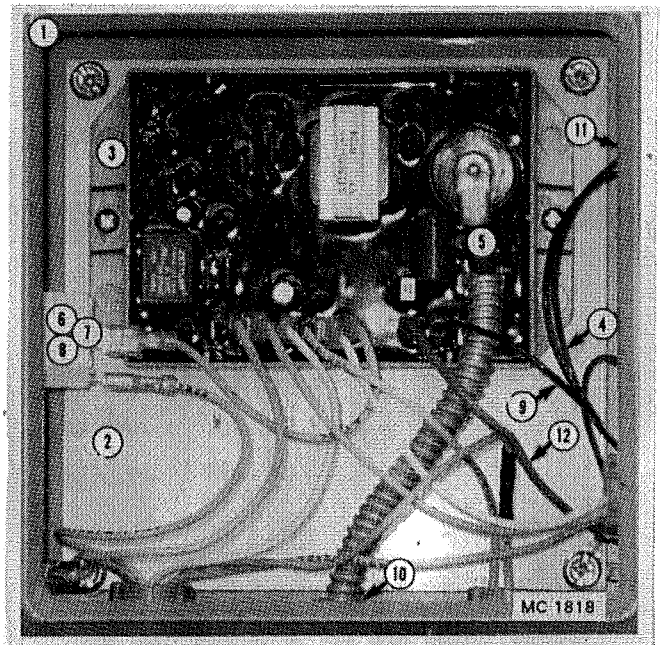


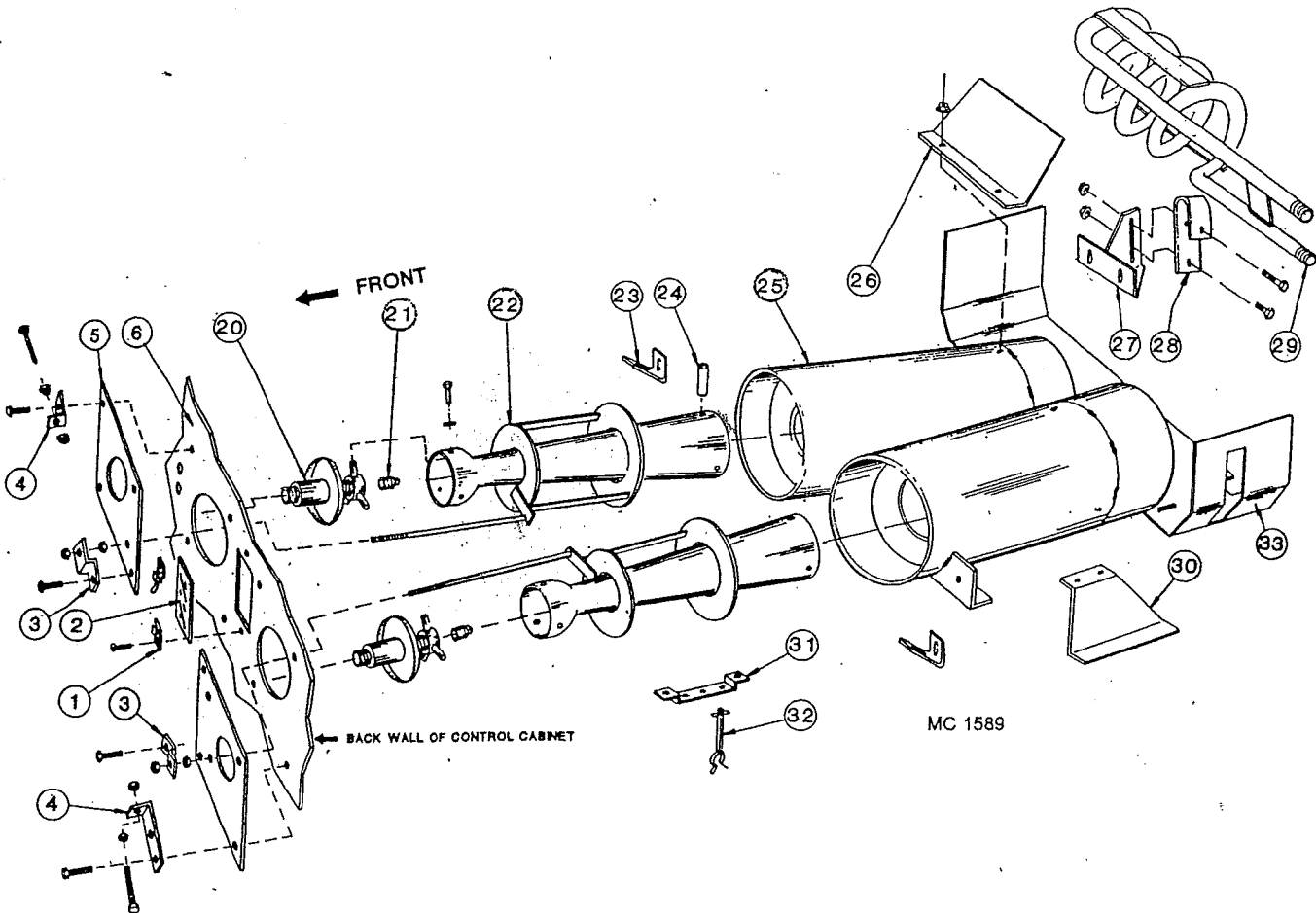
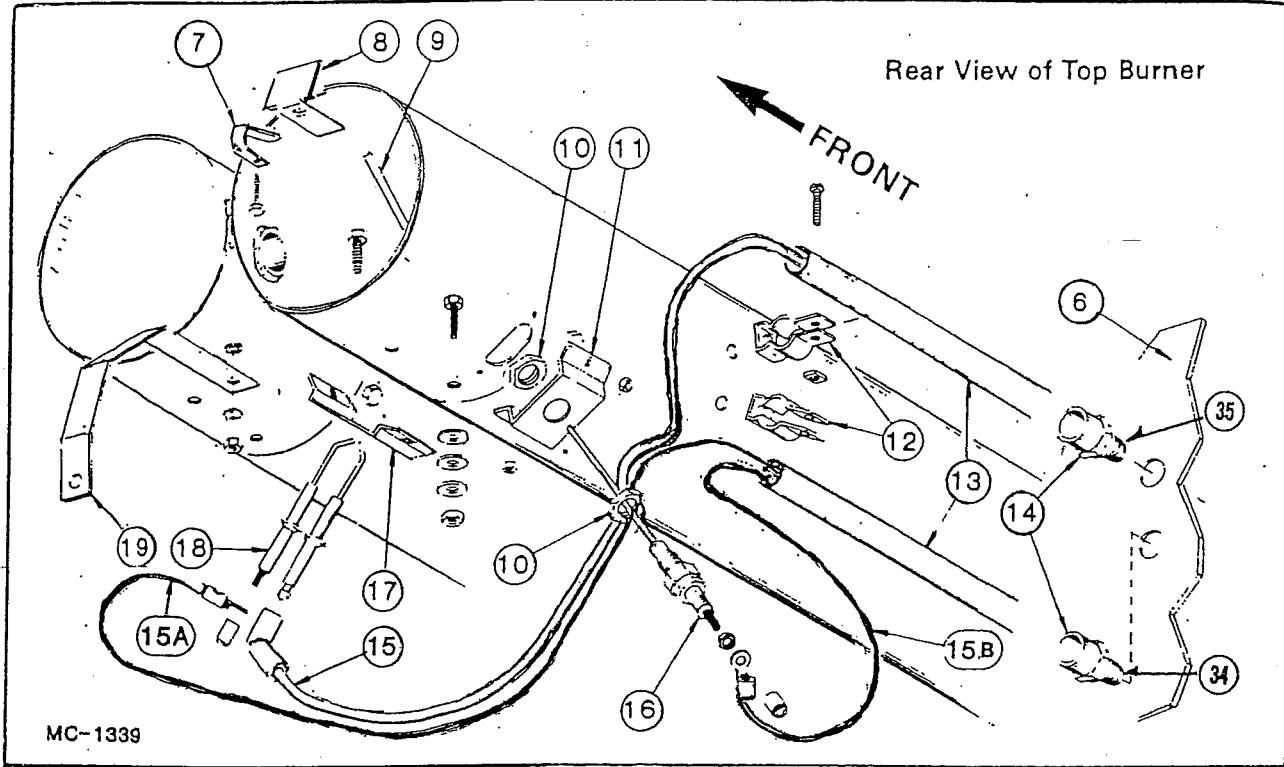
Figure 4

Ignition Board and Box

| Ref. | Part No. | Qty. | Description |
|------|----------|------|---|
| 1 | 128 6994 | 1 | Ignition Box |
| 2 | 128 2938 | 1 | Ignition Board Mount Plate |
| 3 | 125 6965 | 1 | 115V Ignition Board with Built In (15) Second Purge Timer |
| 4 | 124 1377 | 1 | Low Voltage Wire Kit 18 ga. Red 84" (213cm) - Electrode |
| 5 | 122 9003 | 1 | High Voltage Wire Kit |
| 6 | 125 6806 | 1 | SPST On-Off Toggle Switch - Sealed |
| 7 | 128 6377 | 1 | Ignition Switch Decal |
| 8 | 125 6807 | 1 | Sealing Ring for 125 6806 |
| 9 | 124 1079 | 1 | Low Voltage Wire Kit 18 ga. Black 84" (213cm) - Sensing Probe |
| 10 | 121 6813 | 1 | Feed Through Fitting for (1) High Voltage Wire |
| 11 | 121 6814 | 1 | Feed Through Fitting for (2) Low Voltage Wires (Red & Black 18 ga.) |
| 12 | | 1 | Green Ground Wire |



Venturi Burner



VENTURI BURNER

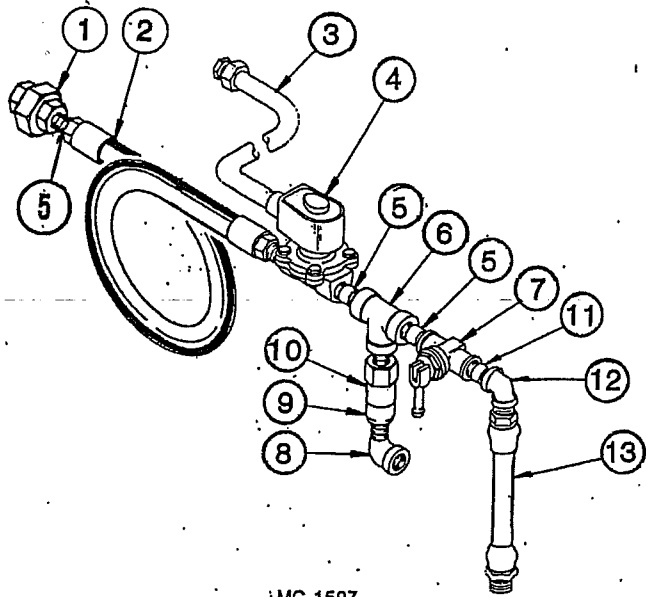
NOTE: Quantities shown are for one burner assembly.

| Ref. | Part No. | Qty. | Description |
|------|----------|------|--|
| 1 | 128 8969 | 2 | Burner Window Holder Clip |
| 2 | 128 8968 | 1 | Burner Window |
| 3 | 128 4515 | 2 | Air Adjuster Bracket |
| 4 | 128 3371 | 2 | Air Adjuster Clamp Bracket Short (2-15/16") |
| | 128 2008 | 2 | Air Adjuster Clamp Bracket Long (3-9/16") |
| 5 | 128 4488 | 2 | Hand Hole Cover Plate |
| 6 | — — | — | Back Wall of Control Cabinet |
| 7 | 127 5201 | 1 | Eddy Mounting Strip |
| 8 | 127 5200 | 1 | Natural Gas Eddy |
| 9 | 128 0197 | 1 | Flame Ground Rod |
| 10 | 121 6915 | 2 | Locknut - 1/2" (12.7mm) |
| 11 | 128 3007 | 1 | Flame Sensing Probe Bracket |
| 12 | 121 6906 | 2 | Pipe Clamp |
| 13 | 128 5742 | 2 | Igniter Line Support Tube |
| 14 | 127 8063 | 2 | PVC Female Adapter - 1/2" (12.7mm) |
| 15 | 122 9003 | 1 | Ignition Wire with 90° Boot |
| 15A | 124 1377 | 1 | Low Voltage Wire Ass'y Green w/Yellow Stripe (Electrode) 18 ga. 84" (213cm) |
| 15B | 124 1079 | 1 | Low Voltage Wire Ass'y Black (Sensing Probe) 18 ga. (213cm) |
| 16 | 124 6872 | 1 | Flame Sensing Probe |
| 17 | 128 2962 | 1 | Electrode Mounting Bracket |
| 18 | 128 6995 | 1 | Style 2 Electrode |
| 19 | 121 3007 | 1 | Ground Strap |
| 20 | 128 0108 | 2 | Inlet Throttle |
| 21 | 127 5700 | 2 | Burner Nozzle-Natural Gas - 3/8" (9.5mm) Orifice |
| | 128 5715 | 2 | Burner Nozzle-LP Gas - 1/4" (6.35mm) Orifice |
| 22 | 128 0112 | 2 | Venturi Burner |
| 23 | 128 4260 | 2 | Burner Mounting Strap |
| 24 | 128 5401 | 6 | Venturi Spacer |
| 25 | 128 0137 | 1 | Venturi Extension |
| 26 | — — | — | Burner Deflector |
| | 128 5310 | 1 | 17 5/8" (44.8cm) for 10HP fan assembly |
| | 128 5308 | 1 | 12 3/4" (32.4cm) for 20HP fan assembly |
| 27 | 128 0141 | 1 | Vaporizer Coil Anchor (LP Gas) |
| 28 | 128 5306 | 1 | Vaporizer Coil Anchor Clip (LP Gas) |
| 29 | 128 0140 | 1 | Vaporizer Coil (LP Gas) |
| 30 | 128 4523 | 1 | Burner Front Support - Right |
| | 128 4524 | 1 | Burner Front Support - Left |
| 31 | 128 4941 | 1 | Wire Support Bracket |
| 32 | 128 6989 | 3 | Stand-Off Clip |
| 33 | 128 5313 | 1 | Burner Shroud |
| 34 | 121 6814 | 1 | Low Voltage Feed Through (2) Holes |
| 35 | 121 6815 | 1 | High Voltage Feed Through (1) Hole |

LP Gas Liquid Lines

Liquid Control Line

| Ref. | Part No. | Description |
|------|----------|--------------------------------|
| 1 | 121 8022 | ½" Extra Heavy Union |
| 2 | 128 8400 | ½" ID x 34" Hose w/Couplings |
| 3 | 128 1820 | ⅝" Flexible Conduit |
| 4 | 125 7082 | ½" Solenoid Valve |
| 5 | 121 8094 | ¼" x 1 ½" Extra Heavy Nipple |
| 6 | 120 8035 | ½" Extra Heavy Tee |
| 7 | 121 7015 | Hand Valve - ½" |
| 8 | 121 8048 | ½" - 90° Standard Street Elbow |
| 9 | 121 7014 | Relief Valve Adapter |
| 10 | 121 7013 | Relief Valve |
| 11 | 128 8048 | ½" x 2 ½" Extra Heavy Nipple |
| 12 | 121 8036 | ½" - 90° Extra Heavy Elbow |
| 13 | 121 7005 | Intake Hose Liquid Propane |



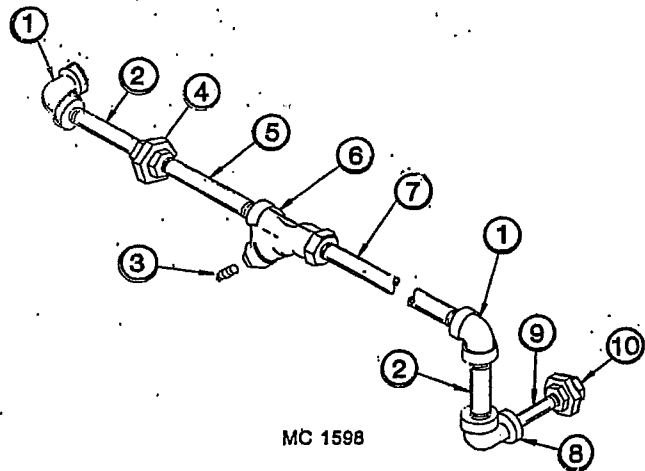
MC 1597

Solenoid Valve Repair Kit

The repair kit and coil for the ½" solenoid valve (ref. 4) is shown on page 19.

Vaporizer to Manifold Pipe

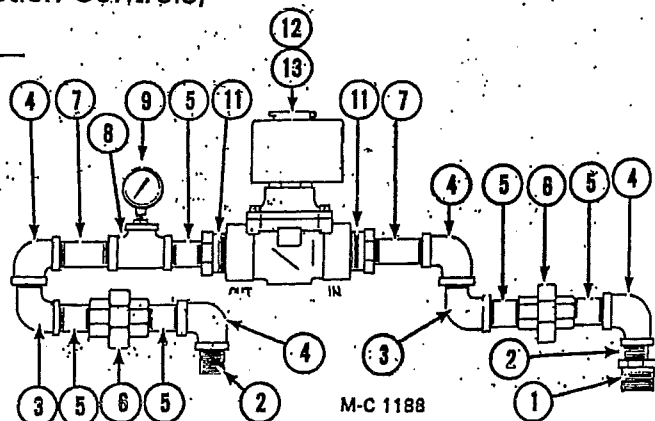
| Ref. | Part No. | Description |
|------|----------|----------------------------------|
| 1 | 121 8027 | ¾" - 90° Extra Heavy Elbow |
| 2 | 121 8006 | ¾" x 2" Extra Heavy Nipple |
| 3 | 001 8001 | ⅝" Pipe Plug |
| 4 | 121 8072 | ¾" Extra Heavy Union |
| 5 | 125 8058 | ¾" x 2 ½" Extra Heavy Nipple |
| 6 | 121 8060 | ¾" Strainer |
| 7 | 128 5426 | ¾" x 30 ½" Extra Heavy Nipple |
| 8 | 121 8032 | ¾" to ½" - 90° Extra Heavy Elbow |
| 9 | 121 8094 | ½" x 1 ½" Extra Heavy Nipple |
| 10 | 121 8022 | ½" Extra Heavy Union |



MC 1598

Gas Manifold Low Fire Piping and Solenoid (Used with Base Section Controls)

| Ref. | Part No. | Qty. | Description |
|------|----------|------|-------------------------------------|
| 2 | 128 5464 | 2 | ⅜" (9.5mm) Std. Close Nipple |
| 3 | 128 5467 | 2 | ⅜" (9.5mm) Std. Street Elbow - 90° |
| 4 | 128 5468 | 4 | ⅜" (9.5mm) Std. Elbow - 90° |
| 5 | 128 5462 | 5 | ⅜" x 1 ½" (9.5x38.1mm) Std. Nipple |
| 6 | 128 5469 | 2 | ⅜" (9.5mm) Std. Union |
| 7 | 128 5463 | 2 | ⅜" x 2" (9.5x50mm) Std. Nipple |
| 8 | 128 5466 | 1 | ⅜" (9.5mm) Std. Tee |
| 9 | 120 7002 | 1 | Pressure Gauge |
| 11 | 128 5465 | 2 | ¾" x ⅜" (19x9.5mm) Reducing Bushing |
| 12 | 121 7002 | 1 | ¾" (19mm) Solenoid Valve |
| 13 | 122 7035 | 1 | Repair Kit for Ref. 12 |
| | 122 7001 | 1 | Coil for Ref. 12 |



M-C 1188

LP and Natural Gas Manifolds

REPAIR KITS AND PARTS FOR MODULATING VALVES, SOLENOID VALVES AND LP GAS PRESSURE REGULATORS

For Modulating Valves 123 7002 & 123 7024

122 9993 Seat Kit (Incl. stem, disc holder & diaphragm)
122 7006 Diaphragm

For 1 1/4" Solenoid Valve 128 7001

122 7034 Repair Kit (See note)
--- 4607 Coil

For 1/2" Solenoid Valve 125 7082

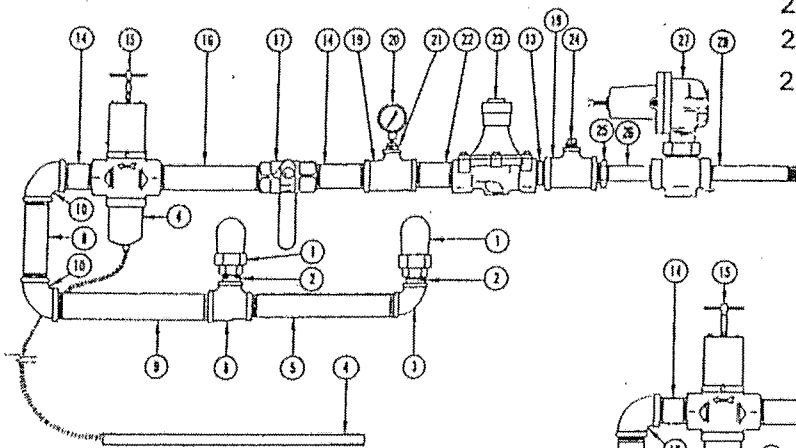
122 7039 Repair Kit (See note)
122 7001 Coil

NOTE: Kit includes all internal parts that would require replacement in normal service and installation instructions.

For LP Gas Pressure Regulator 128 7005

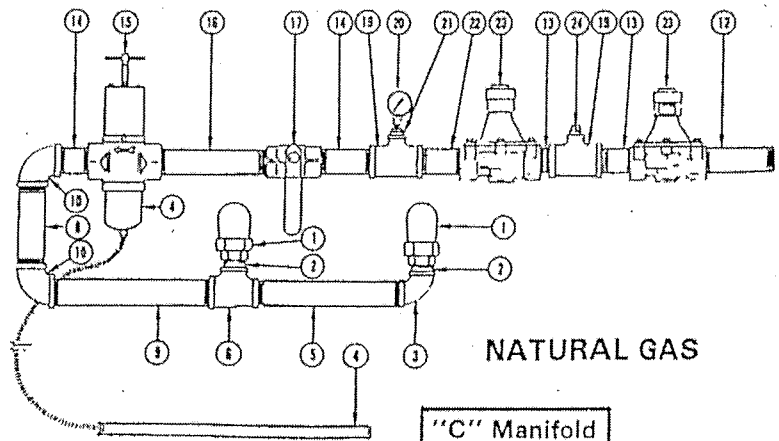
122 7043 - Diaphragm (Nitrile)
122 7044 - Disc Assembly
122 7045 - Control Spring (Yellow)
122 7046 - Stabilizer
122 7047 - Diaphragm Case O Ring

| Ref. | Part No. | Description |
|------|----------|--|
| 1 | 128 8029 | 1" Std. Union Elbow-90° |
| 2 | 128 8013 | 1" Std. Close Nipple |
| 3 | 128 8016 | 1" Std. Elbow - 90° |
| 4 | 122 7023 | Power Element 90°-210°F (15' Capillary) Code "B" Optional |
| | 122 7036 | Power Element 140°-250°F (15' Capillary) Code "D" Standard |
| 5 | 128 8058 | 1" x 10 1/2" Std. Nipple |
| 6 | 128 8007 | 1 1/4" x 1" x 1" Std. Tee |
| 7 | 127 8016 | 1 1/4" x 5 1/2" Std. Nipple |
| 8 | 123 8046 | 1 1/4" x 7 1/2" Std. Nipple |
| 9 | 128 8065 | 1 1/4" x 11" Std. Nipple |
| 10 | 123 8051 | 1 1/4" Std. Elbow - 90° |
| 11 | 127 8021 | 1 1/4" x 9 1/2" Std. Nipple |
| 12 | 123 8073 | 1 1/4" x 6 1/2" Std. Nipple |
| 13 | 123 8069 | 1 1/4" Std. Close Nipple |
| 14 | 123 8045 | 1 1/4" x 2 1/2" Std. Nipple |
| 15 | 123 7024 | 1 1/4" Modulating Valve w/ 140°- 250°F Power Element |
| 16 | 129 8033 | 1 1/4" x 8 1/2" Std. Nipple |
| 17 | 123 7003 | 1 1/4" Main Hand Valve |
| 18 | 128 8024 | 1 1/4" x 5 Std. Nipple |
| 19 | 127 8131 | 1 1/4" x 1 1/4" x 3/8" Std. Tee |
| 20 | 120 7002 | Pressure Gauge |
| 21 | 127 8132 | 3/8" to 1/4" Reducing Bushing |
| 22 | 128 8003 | 1 1/4" x 3 1/2" Std. Nipple |
| 23 | 128 7001 | 1 1/4" Solenoid Valve |
| 24 | 001 8001 | 3/8" Pipe Plug |
| 25 | 123 8078 | 1 1/4" x 3/4" Std. Reducing Bushing |
| 26 | 121 8069 | 3/4" x 3" Std. Nipple |
| 27 | 128 7005 | LP Gas Pressure Reg. |
| 28 | 121 8091 | 3/4" X 7" Extra Hvy. Duty Nipple |



"C" Manifold

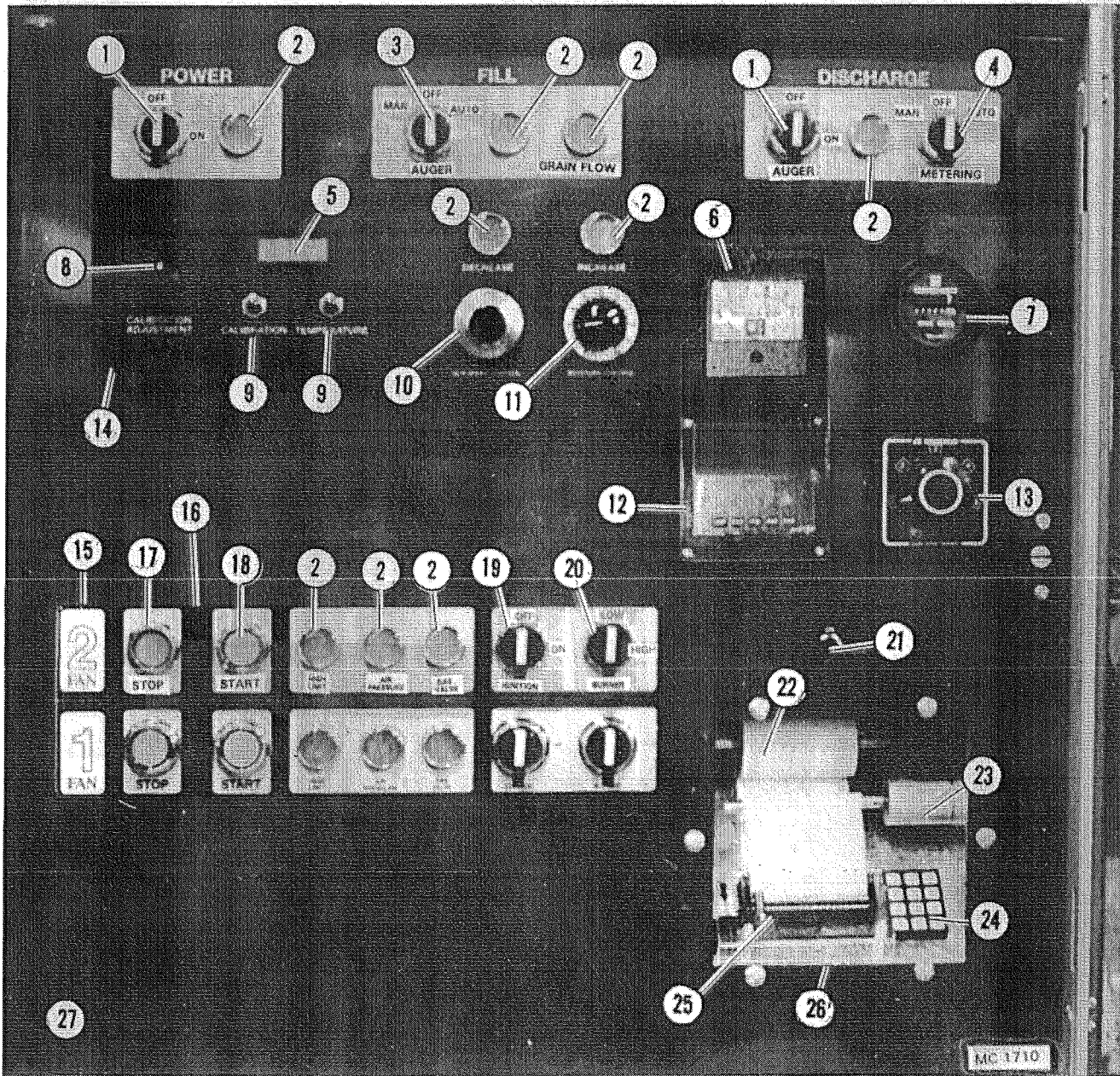
LIQUID PROPANE



NATURAL GAS

"C" Manifold

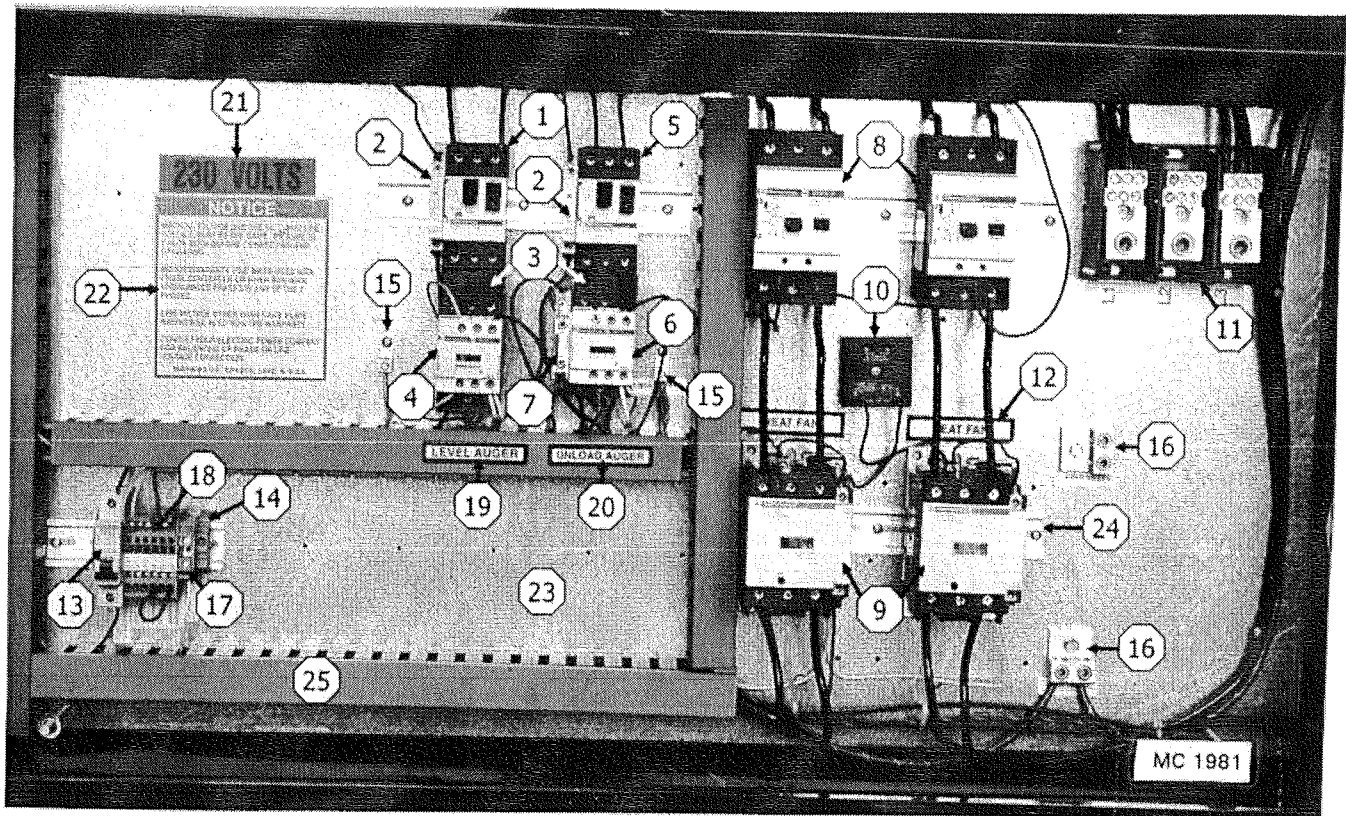
REMOTE CABINET INSIDE CONTROL PANEL



| Ref. | Part No. | Qty. | Description |
|------|----------|------|--|
| 1 | 125 6809 | 2 | OFF-ON-ON Momentary Contact Switch |
| 2 | 125 6808 | AR | Indicator Light |
| 3 | 125 6810 | 1 | Switch ON-OFF-ON (Level Auger) |
| 4 | 125 6811 | 1 | Switch ON-OFF-ON (Metering Rolls) |
| 5 | 122 7068 | 1 | Digital Display Meter |
| 6 | 124 6981 | 1 | Discharge Meter |
| 7 | 444 645 | 1 | Hour Meter |
| 8 | 122 7069 | 1 | Calibration Potentiometer-Monitor |
| 9 | 125 6834 | 2 | Push Button-Calibration and Grain Temperature |
| 10 | 124 1195 | 1 | SCR Drive Potentiometer (10 Turn with Wires) 42" (107cm) |
| | 124 6892 | 1 | Multi Dial with Lock |
| 11 | 124 6955 | 1 | Moisture Control Potentiometer & Wires 60" (153cm.) |
| | 124 6941 | 1 | Dial |
| 12 | 124 7004 | 1 | Digital Thermometer Read Out Meter |

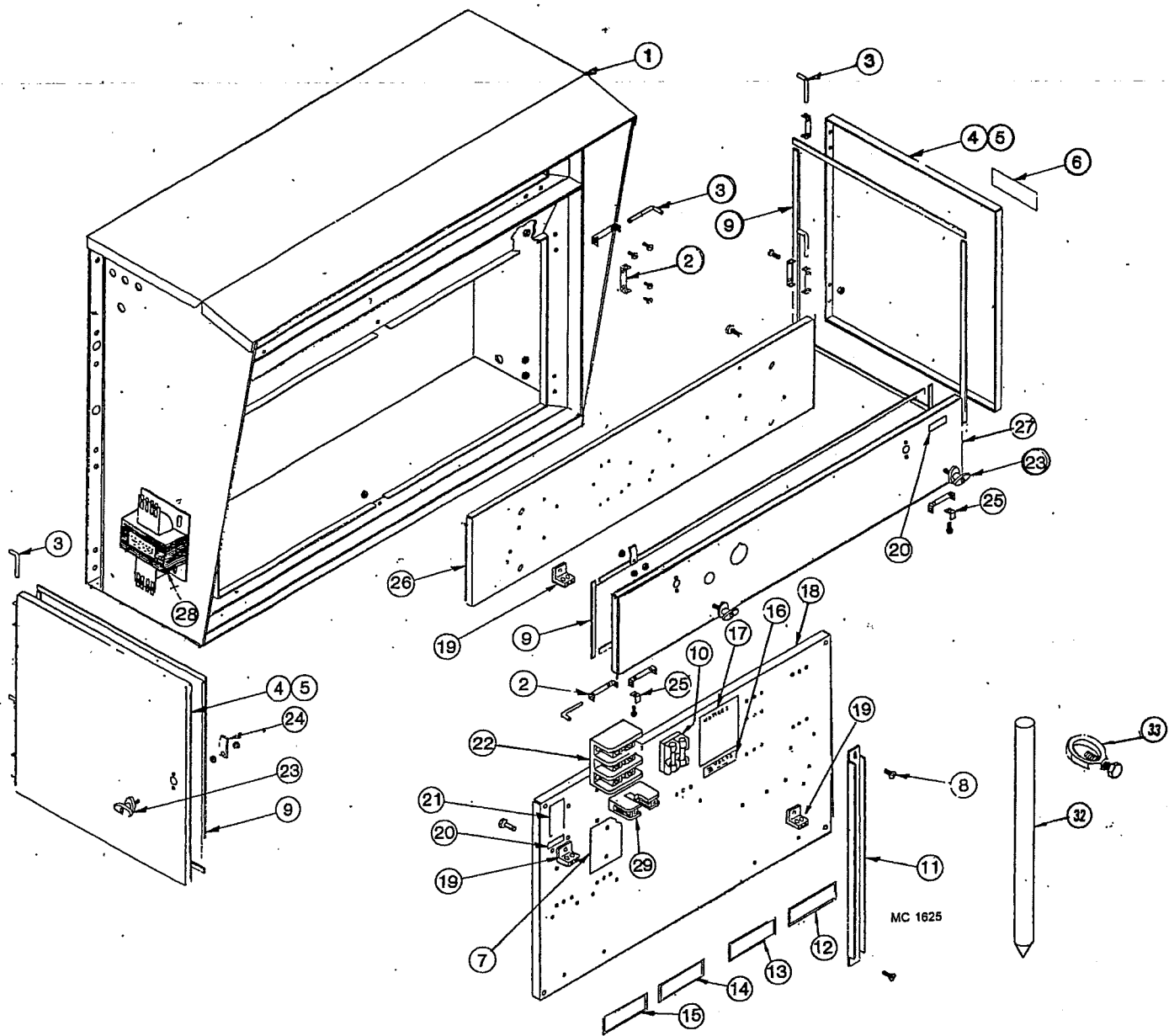
| Ref. | Part No. | Qty. | Description |
|------|----------|------|---|
| 124 | 6961 | AR | Digital Thermometer Thermocouple 180" (4.6m) |
| 13 | 124 6959 | 1 | Rotary Selector Switch 5-Way for 124 6958 |
| 14 | 124 8303 | 1 | Power Control Bezel |
| 15 | 124 8300 | 1 | Fan & Burner Bezel 1 & 2 |
| 16 | 124 8304 | 1 | Fan & Burner Control Bezel |
| 17 | 128 6845 | 2 | Stop Button - Fan |
| 18 | 128 6844 | 2 | Start Button - Fan |
| 19 | 125 6812 | 2 | Switch OFF-ON - Ignition |
| 20 | 125 6812 | 2 | Switch HIGH-LOW - Burner |
| 21 | 125 6839 | 1 | Switch ON-OFF - Printer |
| 22 | 122 7061 | 1 | Thermal Paper 3 1/2" x 246 ft. (7.94cm x 75m) |
| 23 | | 1 | Printer Take-Up Assembly |
| 24 | | 1 | Keyboard, 12 Button |
| 25 | | 1 | Printer with Flat Cable |
| 26 | 122 7074 | 1 | Printer Assembly |
| 27 | 124 4876 | 1 | 2-Fan Inside Control Door (only) |

**MOTOR CONTROL CABINET CF620C
w/SPLIT CENTRIFUGAL FANS & (2) 10HP MOTORS
1Ø / 60Hz / 230V**



| Ref. | Part No. | Qty. | Description | Ref. | Part No. | Qty. | Description |
|------|----------|------|--|------|----------|------|-------------------------------------|
| 1 | 123 6960 | 1 | Protector L.A. GV2ME21 | 13 | 125 6988 | 1 | Circuit Breaker 8 Amp (1) Pole 115V |
| 2 | 125 6885 | 2 | Fault L.A. & U.A. GV2AD-0101 | 14 | 490 6833 | 2 | End Retainers |
| 3 | 125 6864 | 2 | Adaptor L.A. & U.A. GV2AF3 | 15 | 125 6975 | 1 | Ground Lug (1) Pole |
| 4 | 123 6951 | 1 | Contactor L.A. LC1D25F7 | 16 | 125 6918 | 1 | Ground Lug (2) Pole |
| 5 | 123 6958 | 1 | Protector U.A. GV2ME16 | 17 | 125 7020 | 1 | Neutral Terminal Block (Screw Type) |
| 6 | 123 6929 | 1 | Contactor U.A. LC1D18F7 | | 125 7021 | 1 | End Plate for 125 7020 |
| | 122 6930 | | Replacement Coil LXD1G7 | 18 | 125 7005 | 6 | Terminal Block, Spring 2 wire 6mm |
| 7 | 125 6869 | 1 | Interlock (Auxiliary Contacts) LAD8N20 (N.O.) | | 125 7006 | 1 | Terminal End Plate Single 6mm |
| | | | | | 125 7012 | 6 | Terminal Marker Strip |
| 8 | 123 6964 | 2 | Protector Fans 2 GV2ME63 | 19 | 121 8351 | 1 | Level Auger Decal |
| | 125 6866 | 2 | Fault Fans GV3A08 | 20 | 128 8335 | 1 | Unload Auger Decal |
| 9 | 123 6952 | 2 | Contactor Fans LC1D65F7 | 21 | 123 8336 | 1 | 230 Volts Decal |
| | 122 6930 | | Replacement Coil LXD1G7 | 22 | 121 8315 | 1 | Notice - Warranty Decal |
| 10 | 124 6831 | 1 | Delay Relay (10) Seconds | 23 | 124 4492 | 1 | Component Mounting Panel |
| 11 | 128 6957 | 1 | Distribution Splitter Block - 310 Amps | 24 | 490 6831 | AR | Din Rail |
| 12 | 121 8313 | 2 | Heat Fan Decal | 25 | 128 6905 | AR | Wire Raceway Track |

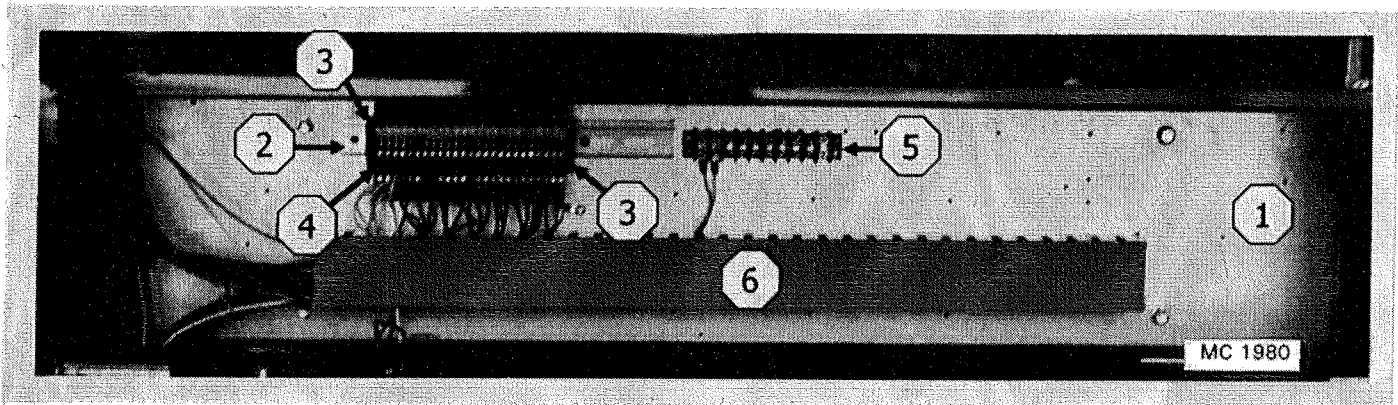
Base Section Control Cabinet



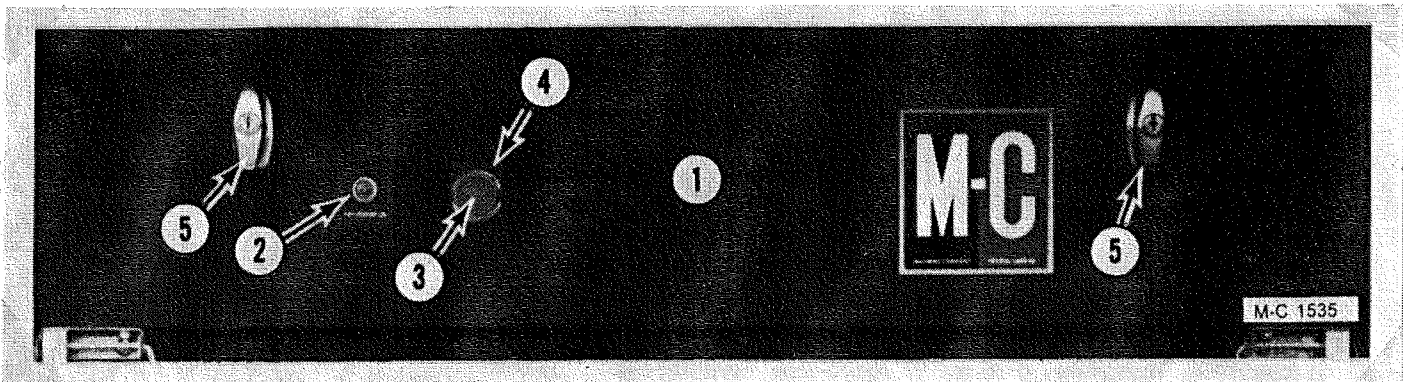
Base Section Control Cabinet

| Ref. | Part No. | Qty. | Description |
|------|----------|------|--|
| 1 | 128 0306 | 1 | Motor Control Cabinet Weldment |
| 2 | 128 2740 | 12 | Door Hinge |
| 3 | 128 5201 | 6 | Hinge Pin |
| 4 | 128 1329 | 2 | Door Assembly - Left & Right (include ref. 2, 5 & 9) |
| 5 | 128 4844 | 2 | Door - Left & Right |
| 6 | 121 8316 | 1 | Dryer Warning Decal |
| 7 | 128 5789 | 2 | Insulator Sheet (460 & 575V) |
| 8 | 000 8103 | 2 | 5/16-18 x 1/2" Truss Head Screw |
| | 000 8169 | 2 | 5/16-18 Flanged Locknut |
| 9 | 121 8966 | - | Weather Stripping 1/4" x 3/4" (specify feet required) |
| 10 | 121 6988 | 2 | Fuse Holder - 380, 415, 460 & 575V |
| | 124 6870 | 2 | FRS - 7 Amp Fuse (380V) |
| | 124 6829 | 2 | FRS - 4 Amp Fuse (415V) |
| 11 | 128 4843 | 1 | Door Jamb |
| 12 | 121 8312 | 1 | Heat Fan Decal (EM&EMS) |
| 13 | 121 8312 | 1 | Heat Fan Decal (EMS only) |
| 14 | 128 8335 | 1 | Unload Auger Decal |
| 15 | 121 8351 | 1 | Level Auger Decal |
| 16 | 123 8339 | 1 | 208 Volts Decal |
| | 123 8336 | 1 | 230 Volts Decal |
| | 123 8337 | 1 | 460 Volts Decal |
| | 123 8338 | 1 | 575 Volts Decal |
| 17 | 121 8315 | 1 | Notice, Warranty Decal |
| 18 | 124 4448 | 1 | Component Mounting Panel |
| 19 | 125 6918 | 2 | Grounding Lug |
| 20 | 128 8349 | 2 | Ground Decal |
| 21 | 128 8318 | 1 | Splitter Block Voltage Decal |
| 22 | 128 6957 | 1 | Splitter Block - 1 & 3 Phase |
| 23 | 124 1021 | 4 | Door "T" Handle Assembly (incl. ref. 24 cam, keys and mounting hardware). Lever type handle no longer available. |
| | 128 8946 | 4 | Door "T" Handle w/Keys (less ref. 24 cam) |
| | 122 8900 | 4 | Door "T" Handle Key |
| 24 | 128 3425 | 4 | Door Latch Cam |
| 25 | 128 2741 | 2 | Stop Bracket |
| 26 | 124 4771 | 1 | Component Mounting Board |
| 27 | 124 4864 | 1 | Control Door |
| | 124 1021 | 2 | Door "T" Handle Assembly |
| 28 | 127 6829 | 1 | Transformer (750VA) 460/575V |
| | 123 6902 | 1 | Transformer (1000VA) 380/415V |
| 29 | 127 6823 | 1 | Neutral Lug |
| 30 | 124 2855 | 1 | Hour Meter Bracket (not shown) |
| 31 | 444 645 | 1 | Hour Meter (not shown) |
| 32 | 124 6980 | 1 | Grounding Rod 9/16" dia. x 8 ft. (14.3mm x 2.4m) |
| 33 | 124 6979 | 1 | Grounding Rod Ring |

Electrical Components in 115V Base Section Control Cabinet

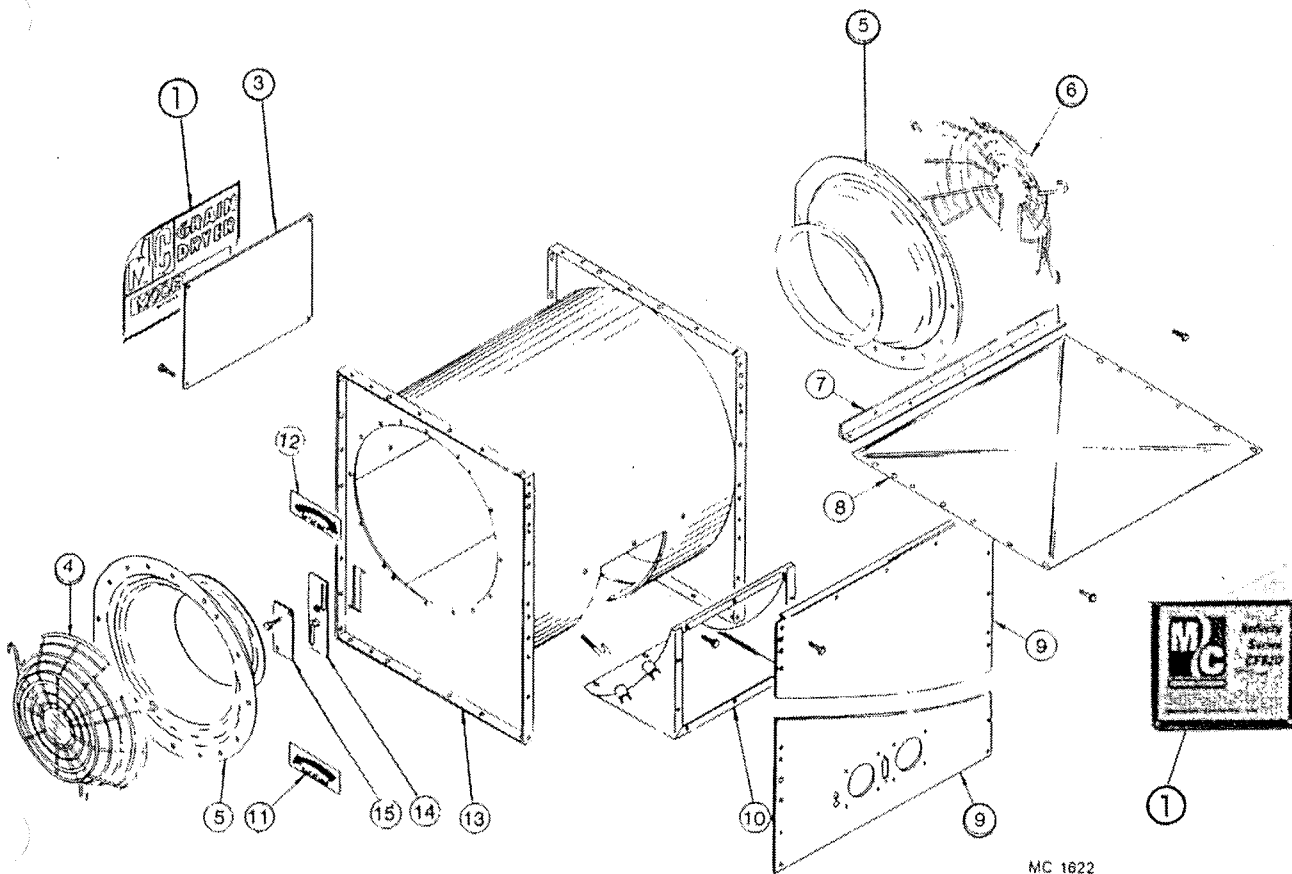


| Ref. | Part No. | Qty. | Description |
|------|----------|------|--------------------------------------|
| 1 | 124 4771 | 1 | Component Mounting Board |
| 2 | 490 6831 | AR | Din Rail |
| 3 | 490 6833 | 2 | End Retainers |
| 4 | 125 7005 | 25 | Terminal Block Spring 2 Wire 6mm. |
| | 125 7006 | 1 | Terminal End Plate Single 6mm. |
| | 125 7012 | 25 | Terminal Marker Strip |
| 5 | 124 6970 | 1 | Terminal Block (Digital Thermometer) |
| 6 | 128 6905 | AR | Wire Raceway Track |



| Ref. | Part No. | Description |
|------|----------|------------------------------|
| 1 | 124 4864 | Control Door |
| 2 | 121 6860 | 125V Indicator Lamp Assembly |
| 3 | 124 6967 | Safety Shut-Off Palm Switch |
| 4 | 128 8379 | "Stop" Legend Plate |
| 5 | 124 1021 | Door "T" Handle Assembly |

Fan Housing

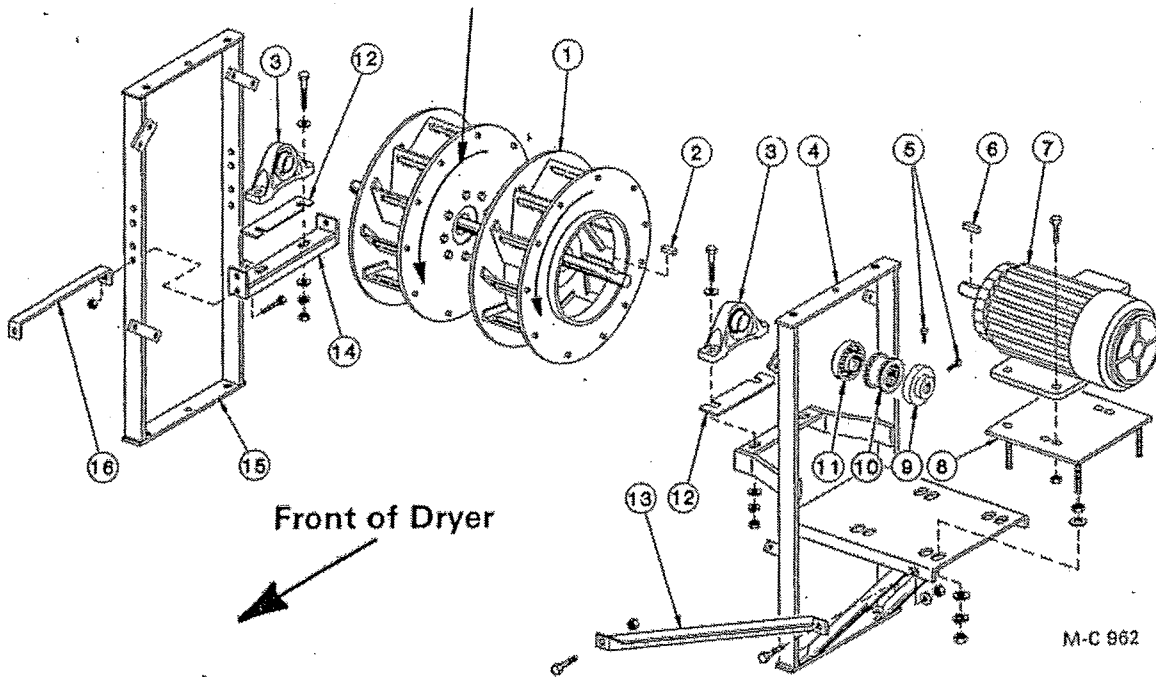


MC 1622

| Ref. Part No. | Qty. | Description | Ref. Part No. | Qty. | Description |
|---------------|----------|---|---------------|----------|---|
| 1 | ---- | Dryer Model Decal | 6 | 128 8965 | 1 ¼ Fan Guard |
| | | | 7 | 128 2757 | 1 Fan Housing Support |
| | | | 8 | 124 4834 | 1 Fan Housing Top Cover |
| 128 8311 | 2 | Model "620" | 9 | 128 0302 | 1 Front Panel |
| 128 8318 | 2 | Model "820" | 10 | 128 0142 | 1 Burner Transition |
| 3 | 128 2999 | Decal Mount Plate (at rear of dryer) | 120 8130 | 4 | ⅝-16 x 2" "J" Bolt |
| 4 | 128 8964 | 1 Full Fan Guard Wire | 001 8210 | 3 | ⅝-16 x ¾" Hex Bolt |
| 5 | 128 5724 | 2 Air Intake Spinning | 000 8168 | 7 | ⅝-16 Flanged Locknut |
| | | | 11 | 121 8301 | 1 Counterclockwise Arrow Decal (motor side of fan housing) |
| 001 8202 | 9 | 5/16-18 x ¾" Hex Washer Head Bolt | 12 | 128 8322 | 1 Clockwise Arrow Decal |
| 000 8109 | 9 | 5/16-18 x 1¼" Capscrew | 13 | 128 0127 | 1 Centrifugal Fan Housing |
| 000 8173 | 9 | 5/16" Flatwasher | 14 | 128 0086 | 1 Vaporizer Mount Plate (LP) |
| 000 8169 | 18 | 5/16-18 Flanged Locknut | 15 | 128 4940 | 1 Vaporizer Hole Cover (Nat.Gas) |

Fans and Fan Drive (Model CF620C & CF820C EM & EMS)

Fan Rotation

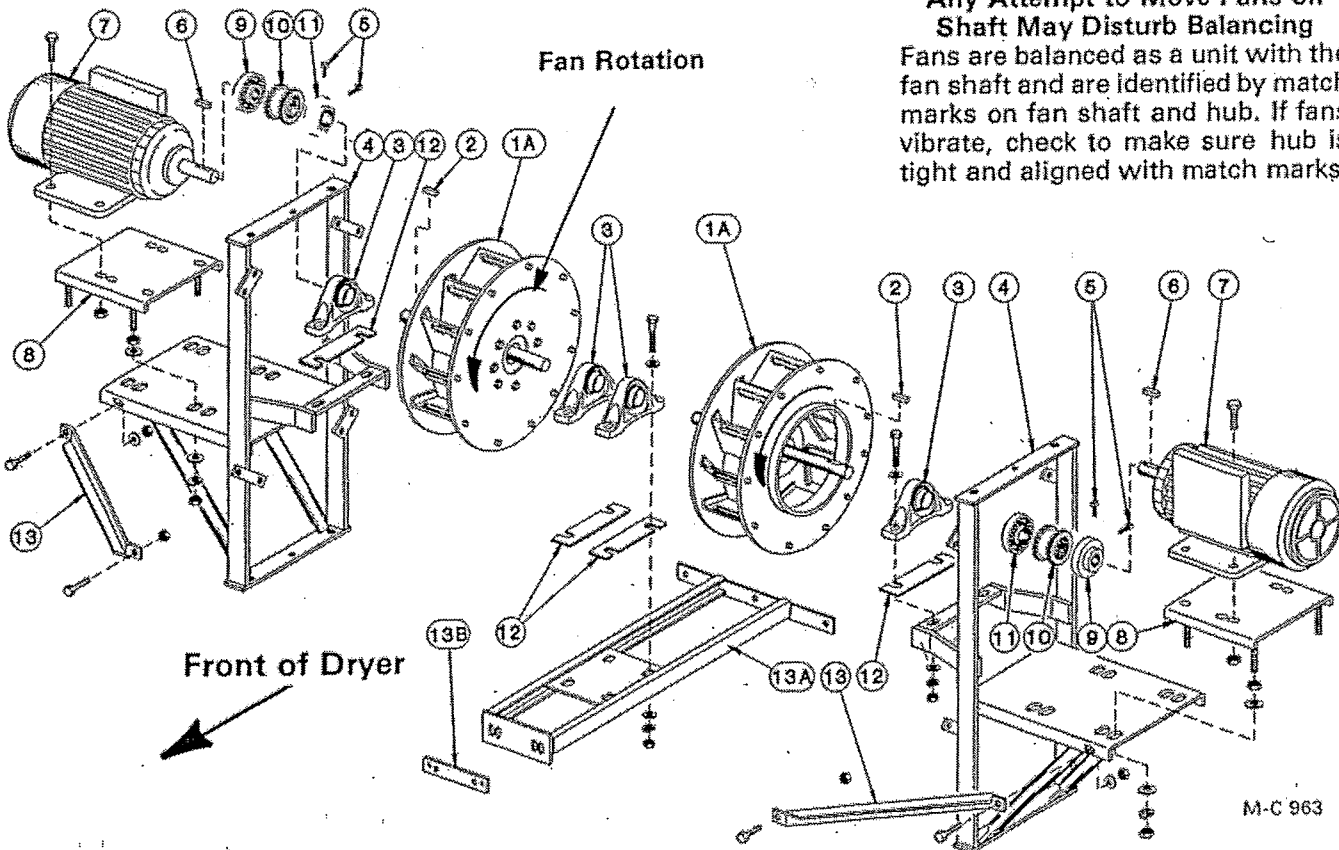


All three phase (EM Models) and lower fan on models CF620C and CF820C

CAUTION

Any Attempt to Move Fans on
Shaft May Disturb Balancing
Fans are balanced as a unit with the
fan shaft and are identified by match
marks on fan shaft and hub. If fans
vibrate, check to make sure hub is
tight and aligned with match marks.

Fan Rotation



All single phase (EMS Models) except lower fan on CF620C and CF820C

Fans and Fan Drive

(Models CF620C & CF820C EM & EMS)

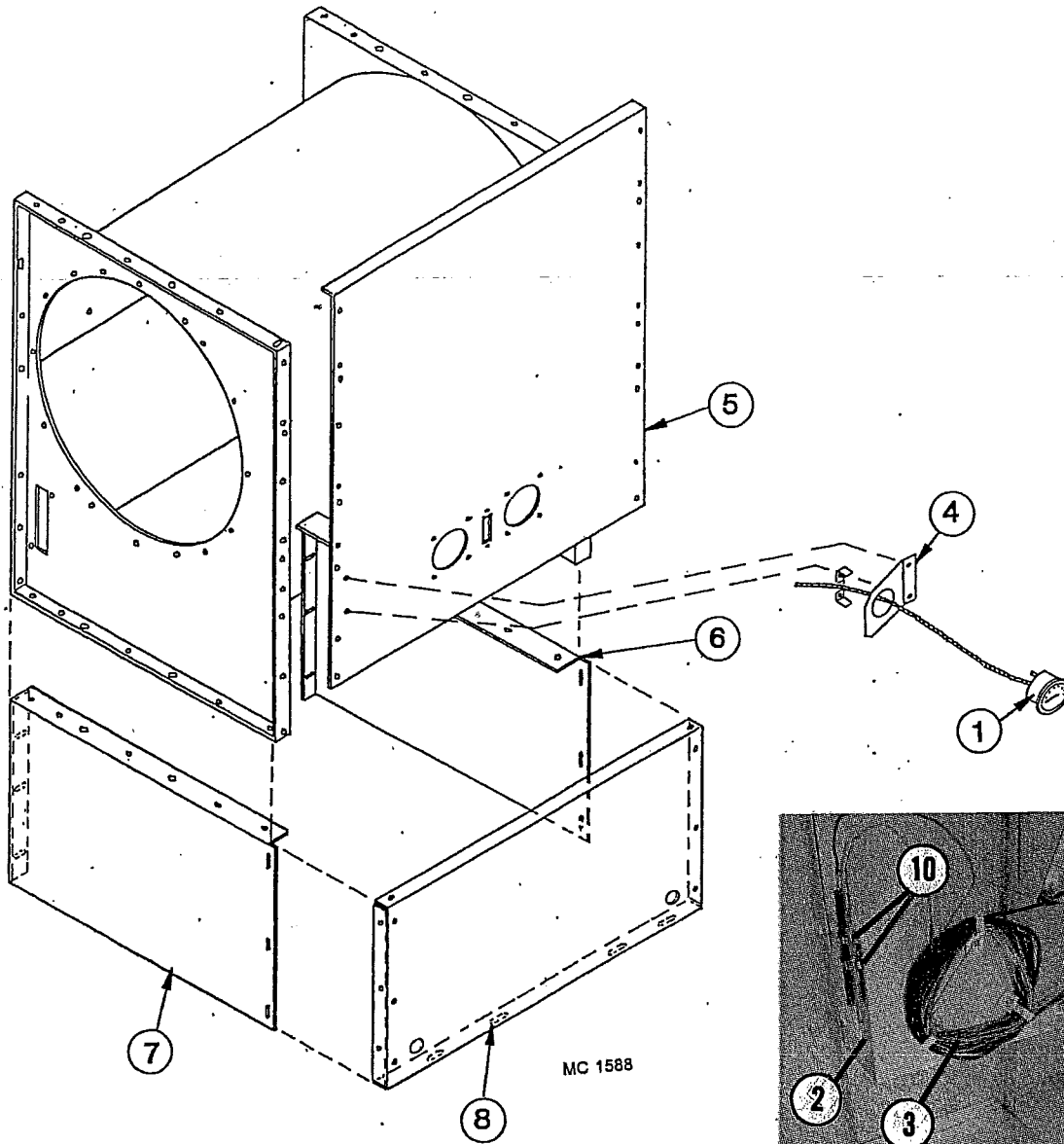
| Ref. | Part No. | Qty. | Description | Ref. | Part No. | Qty. | Description |
|------|----------|------|---|------|----------|------|---|
| 1 | ----- | - | Fan Ass'y - EM Models | 9 | 128 6623 | - | 8-S Flange-1 $\frac{3}{8}$ " (34.9mm.) Bore 10HP Motor |
| | 128 1266 | 1 | 20HP Upper (2 - 10HP fan wheels) | | 128 6604 | - | 8-S Flange - 1 $\frac{5}{8}$ " (41.3mm.) Bore 15 & 20HP Motors |
| | 128 1315 | 1 | 30HP Upper (2 - 15HP fan wheels) | | 128 6613 | - | 9-S Flange - 1 $\frac{7}{8}$ " Bore 30 HP Motor |
| 1A | ----- | - | Fan Ass'y - EMS Models | 10 | 128 6606 | - | Sleeve - Sureflex 8JE 10, 15 & 20HP Motors |
| | 128 1731 | 1 | 10HP Upper Left - 620C (1 - 10HP fan wheel) | | 128 6609 | - | Sleeve - Sureflex 9E 30HP Motor |
| | 128 1732 | 1 | 10HP Upper Right - 620C (1 - 10HP fan wheel) | 11 | 128 6622 | - | 8-S Flange - 2-3/16" (55.6mm.) Bore 10, 15 & 20HP Motors |
| | | 1 | 15HP Upper Right - 820C (1 - 15HP fan wheel) | | 128 6620 | - | 9-S Flange - 2-3/16" Bore 30HP Motor |
| | | 1 | 15HP Upper Left - 820C (1 - 15HP fan wheel) | 12 | 128 2849 | AR | Bearing Shim - 16 gauge (1.59mm.) |
| 2 | 001 5150 | - | Key- $\frac{1}{2}$ "x $\frac{3}{8}$ "x2 (12.7x9.5x51mm.) | | 128 2649 | AR | Bearing Shim - 11 gauge (3.16mm.) |
| 3 | 128 6022 | - | Pillow Block Bearing 2-3/16" (55.6mm.) Bore | 13 | 124 4213 | - | Motor Mount Brace |
| | 000 8268 | 2 | $\frac{5}{8}$ -11x3" (15.9x76.2mm.) Capscrew #5 | | 000 8121 | 2 | $\frac{3}{8}$ -16x1" Capscrew |
| | 000 8299 | 2 | $\frac{5}{8}$ " SAE Flatwasher | | 000 8168 | 2 | $\frac{3}{8}$ -16 Flanged Locknut |
| | 000 8181 | 2 | $\frac{5}{8}$ " Lockwasher | 13A | 128 0249 | - | Inner Bearing Support |
| | 000 8164 | 2 | $\frac{5}{8}$ -11 Hex Nut | | 000 8269 | 5 | $\frac{3}{8}$ -16x1 $\frac{1}{4}$ " Capscrew |
| 4 | 128 0138 | - | Motor Support | | 000 8168 | 5 | $\frac{3}{8}$ -16 Flanged Locknut |
| | 000 8121 | 8 | $\frac{3}{8}$ -16x1" Capscrew | 13B | 128 2671 | AR | Inner Bearing Support Shim |
| | 000 8168 | 8 | $\frac{3}{8}$ -16 Flanged Locknut | 14 | 128 0098 | - | Bearing Support |
| 5 | 128 8130 | - | $\frac{3}{8}$ -16x1" (9.5x25.4mm.) Square Head Cup Pt. Set Screw | | 000 8138 | 3 | $\frac{1}{2}$ -13x1 $\frac{1}{2}$ " (12.7x38mm.) Capscrew |
| 6 | 001 5124 | - | Key-5/16x2 $\frac{3}{8}$ " (6.35x60.3mm.) 10HP Motor | | 000 8139 | 1 | $\frac{1}{2}$ -13x1 $\frac{1}{4}$ " (12.7x44.5mm) Capscrew |
| | 001 5139 | - | Key- $\frac{3}{8}$ x3" (9.5x76.2mm.) 15 & 20HP Motor | | 000 8170 | 4 | $\frac{1}{2}$ -13 Flanged Locknut |
| | 001 5155 | - | Key- $\frac{1}{2}$ x3 $\frac{1}{4}$ " (30HP Motor) | 15 | 128 0091 | - | Fan Bearing Support |
| 7 | ----- | - | Fan Motor (See page) | | 000 8121 | 8 | $\frac{3}{8}$ -16x1" Capscrew |
| | 000 8293 | 4 | $\frac{3}{8}$ -16x1 $\frac{1}{2}$ " Capscrew - Full Thread (10HP motors) | | 000 8168 | 8 | $\frac{3}{8}$ -16 Flanged Locknut |
| | 000 8168 | 4 | $\frac{3}{8}$ -16 Flanged Locknut | | 000 8135 | 4 | $\frac{1}{2}$ -13x1" (12.7x25.4mm.) Capscrew #5 |
| | 000 8139 | 4 | $\frac{1}{2}$ -13x1 $\frac{1}{4}$ " Capscrew (15, 20, & 30HP Motors) | | 000 8170 | 4 | $\frac{1}{2}$ -13 Flanged Locknut |
| | 000 8170 | 4 | $\frac{1}{2}$ -13 Flanged Locknut | 16 | 128 3452 | - | Bearing Mount Stiffener |
| 8 | 128 0167 | - | Motor Mount (10HP Motors) | | 000 8121 | 1 | $\frac{3}{8}$ -16x1" Capscrew |
| | 121 0343 | - | Motor Mount (15 & 20HP Motors) | | 000 8168 | 1 | $\frac{3}{8}$ -16 Flanged Locknut |
| | 128 0090 | - | Motor Mount (30HP Motor) | | 000 8139 | 1 | $\frac{1}{2}$ -13x1 $\frac{1}{4}$ " (12.7x44.5mm.) Capscrew |
| | 000 8165 | 8 | $\frac{3}{4}$ -10 (19.05mm.) Hex Nut | | 000 8170 | 1 | $\frac{1}{2}$ -13 Flanged Locknut |
| | 000 8177 | 8 | $\frac{3}{4}$ " Flatwasher | | | | |
| | 000 8182 | 4 | $\frac{3}{4}$ " Lockwasher | | | | |

NOTE: Fan assembly HP can be determined by measuring the width of the fan wheels.

A. 5 $\frac{1}{4}$ " fan wheels - 10HP (two fan wheels - 20HP) CF620C

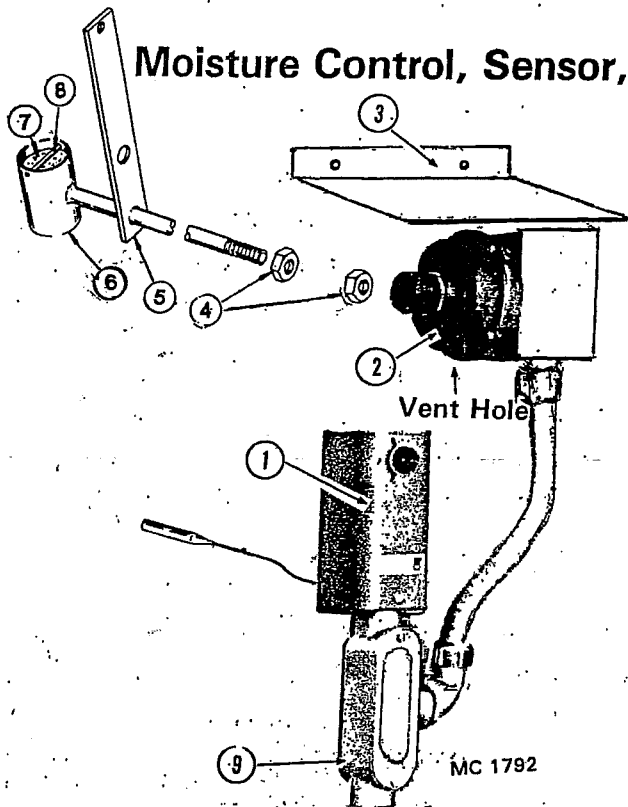
B. 7-15/16" fan wheel - 15HP (two fan wheels - 30HP) CF820C

Fan Housing Supports

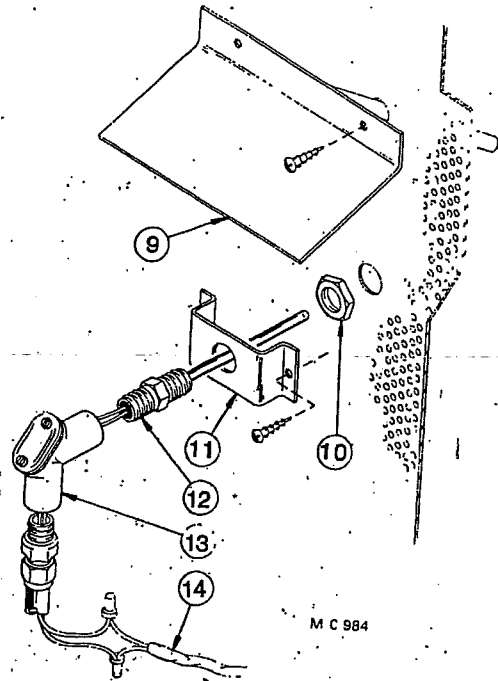


| Ref. | Part No. | Qty. | Description |
|------|----------|------|---|
| 1 | 128 8983 | - | Thermometer - 15 ft. (4.6m) Capillary (Mounting Bracket included) |
| 2 | 124 2949 | 1 | Sensing Bulb Bracket |
| 3 | 124 8325 | 3 | Capillary Tube Holder |
| 4 | 124 4824 | 1 | Thermometer Mount Plate (Single) |
| 5 | 128 0302 | 1 | Front Panel |
| 6 | 124 4460 | 1 | Fan Housing Support - Right |
| 7 | 124 4459 | 1 | Fan Housing Support - Left |
| 8 | 124 4464 | 1 | Fan Housing Support Panel |
| 9 | 120 6949 | 2 | Mod Valve Sensing Bulb Bracket |
| 10 | 120 6950 | 4 | Thermocouple and High Limit Bulb Bracket |

Moisture Control, Sensor, Air Pressure and High Limit Switches



Air Pressure and High Limit Switches



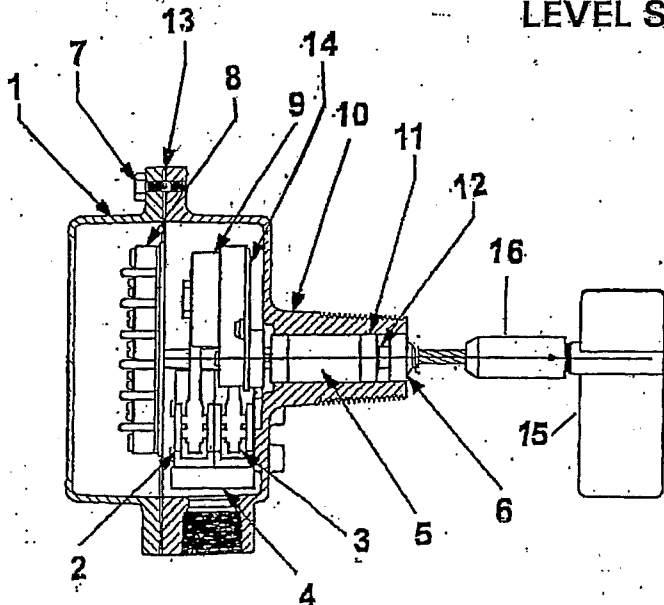
Moisture Control Sensor

| Ref. | Part No. | Description |
|------|----------|---|
| 1 | 125 6967 | High Limit Switch - 8 ft. (2.44m) Capillary-Adjustable-Manual Reset |
| 2 | 121 6849 | Air Pressure Switch |
| 3 | 121 2946 | High Limit Switch Cover |
| 4 | 121 8000 | Pipe Locknut - 1/4" (6.35mm) |
| 5 | 121 2007 | Air Pressure Tube Brkt. |
| 6 | 121 0169 | Air Pressure Tube |
| 7 | 121 5716 | Air Pressure Tube Filter |
| 8 | ----- | Filter Retainer (Wire) |
| 9 | 121 6883 | 1/2" (12.7mm) Conduit Tee w/Cover |

Moisture Control Probe (Sensor)

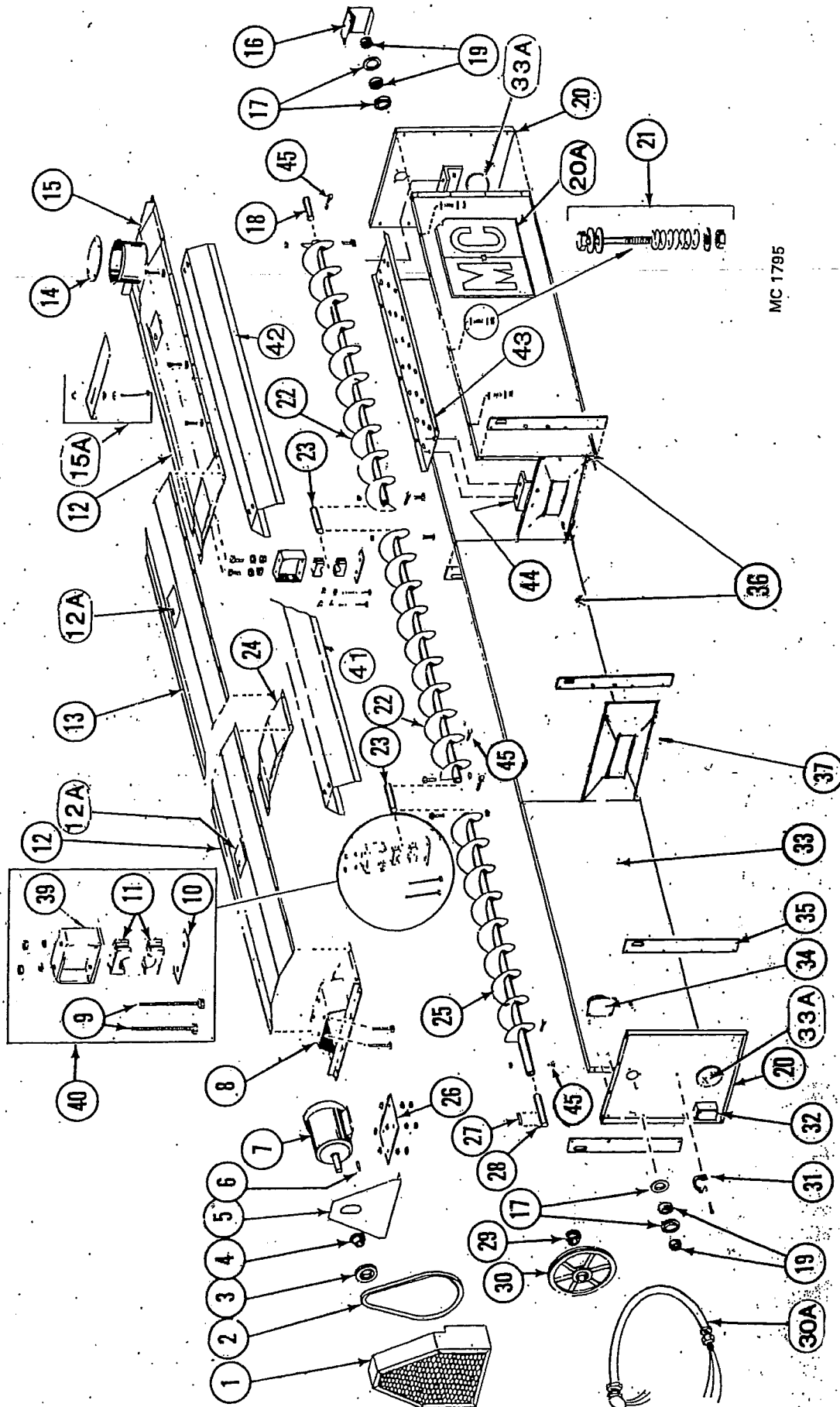
| Ref. | Part No. | Description |
|------|----------|----------------------------|
| 9 | 121 0031 | Thermistor Shield |
| 10 | 121 6915 | Locknut - 1/2" (12.7mm) |
| 11 | 128 3007 | Bracket |
| 12 | 124 6893 | Thermistor (Sensing Probe) |
| 13 | 123 8089 | 1/2" (12.7mm) Handy Ell |
| 14 | 125 6908 | 18/2 PVC-Cord w/Shield |

LEVEL SWITCH ASSEMBLY 1291051



| Ref. | Part No. | Qty. | Description |
|------|----------|------|--------------------------------|
| 1 | 220 0056 | 1 | Aluminum Enclosure |
| 2 | 530 0076 | 1 | Micro Switch Ass'y (Limit) |
| 3 | 530 0052 | 1 | Micro Switch Ass'y (Motor) |
| 4 | 338 0008 | 1 | Switch Shroud Insulator |
| 5 | 416 0033 | 1 | Drive Shaft Assembly |
| 6 | 280 0055 | 1 | Shaft Seal |
| 7 | 110 0048 | 1 | Screw 1/4" (6.35mm) Hex Head |
| 8 | 416 0035 | 1 | Terminal Board Assembly |
| 9 | 350 0039 | 1 | Motor 120 VAC 50/60 Hz |
| 10 | 220 0055 | 1 | Aluminum Enclosure (Shaft End) |
| 11 | 200 1004 | 1 | Ball Bearing |
| 12 | 165 0002 | 1 | Bearing Retaining Ring |
| 13 | 280 0018 | 1 | Gasket Rotary Cover |
| 14 | 416 0078 | 1 | Motor Plate Assembly |
| 15 | 475 227 | 1 | Paddle GRP-2 |
| 16 | 475 228 | 1 | Shaft Coupler GRSS-1 |
| | 475 231 | 1 | Switch Mount Plate (Not Shown) |

Hopper and Level Auger



MC 1795

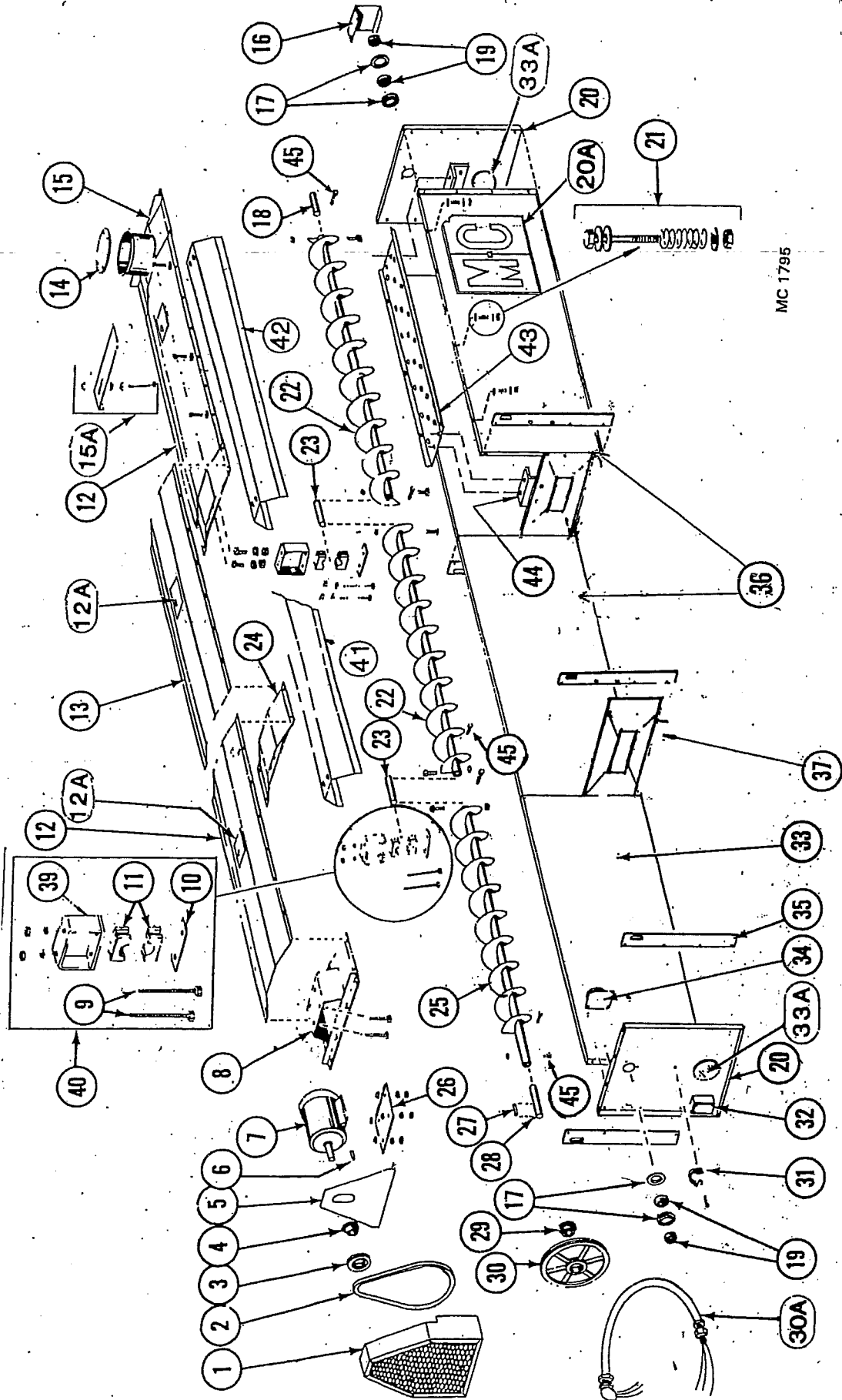
Hopper and Level Auger

16 ft. 24 ft.
(4.9m) (7.3m)

| Ref. | Part No. | Qty. | Description | Ref. | Part No. | Qty. | Description |
|------|----------|------|--|----------|----------|-------------------------|--|
| 1 | 129 1050 | 1 | Level Auger Guard C.E. | 12 | 129 2945 | 2 | Hopper Cover - Front & Rear 76" 193cm) |
| 2 | 128 6103 | 1 | 2/3V/710 (banded belt) or 128 6104 in matched set of two | 12A | 128 8355 | 2 | Warning Decal |
| 3 | 128 6207 | 1 | 3V/3.65 x 2 Groove Pulley 60 Cycle | 13 | 129 2946 | - | Hopper Cover - Center 83" (211cm) |
| | 128 6220 | 1 | 3V/4.5 X 2 Groove Pulley 50 Cycle | 14 | 129 4204 | 1 | Receiving Tube Cover |
| 4 | 128 6214 | 1 | 1 1/2" (28.6mm) SH Bushing for 3HP & 5HP motor (Incl. capscrews & lockwashers) | 15 | 129 0002 | 1 | Receiving Hopper |
| 5 | 129 4944 | 1 | Level Auger Guard Back | 15A | 129 4205 | 1 | Flow Restrictor |
| 6 | 001 5119 | 1 | Key - 1/4" x 1/4" x 2" (6.35x6.35x51mm) | 129 5703 | 1 | Position & Locking Bolt | |
| 7 | 128 6818 | 1 | 3HP & 5HP motors | 000 8168 | 3 | 3/8"-16 Flanged Locknut | |
| | | - | 3HP 3Ø Motor 230/380/460V - 520/620/720 | 129 4947 | 1 | Stub Guard | |
| | 128 6815 | - | 5HP 3Ø Motor 230/380/460V - 820 | 17 | 001 6004 | 4 | Bearing Flangette 1 1/4" (31.75mm) |
| | 128 6829 | 1 | 3HP 1Ø Motor 230V - 520/620/720/820 | 18 | 128 5052 | 1 | Level Auger Rear Shaft 1 1/4" x 8" (31.75 x 203mm) |
| 8 | 129 0001 | 1 | Level Auger Motor Mount | 19 | 001 6003 | 2 | Bearing w/Lock Collar 1 1/4" (31.75mm) |
| 9 | 001 8287 | 2 | 3/8"-16 x 3 3/4" (9.5 x 95.2mm) Capscrew - Grade 5 | 20 | 129 2848 | 2 | Hopper End Panel - Front & Rear w/View Lens |
| | 000 8162 | 4 | 3/8"-16 Hex Nut | 20A | 121 8343 | 2 | M-C Decal 26 1/2" x 23" (67x58.4cm) |
| 10 | 128 3415 | 1 | Bearing Hanger Bar | 21 | 000 8101 | 12 | 1/4"-20x2" (6.35x51mm) Capscrew |
| 11 | 128 6021 | 1 | Wood Bearing - 1 1/4" (31.75mm) 2 halves | 131 8718 | 12 | 18 | Spring 3/8" OD x 1 3/4" (15.9 x 44.5mm) Plated |
| | | 2 | | 000 8172 | 36 | 54 | 1/4" (6.35mm) Flatwasher |
| | | | | 000 8210 | 12 | 18 | 1/4"-20 Two-Way Locknut |

Continued on next page

Hopper and Level Auger



MC 1795

Hopper and Level Auger

| 16 ft. 24 ft. (4.9m) (7.3m) | | 16 ft. 24 ft. (4.9m) (7.3m) | | | | | |
|--------------------------------|----------|--------------------------------|---|------|----------|------|---|
| Ref. | Part No. | Qty. | Description | Ref. | Part No. | Qty. | Description |
| 22 | 128 0122 | 1 | 2 Level Auger 93 1/2" (238cm) | 33 | 129 2857 | 1 | Hopper Side Panel - RH Front (Level Auger Switch) |
| 23 | 128 5050 | 1 | RH Flighting | 33A | 129 5702 | 2 | Port View Lens |
| 24 | 129 0000 | 1 | Level Auger Center Shaft 1 1/4" x 10 1/4" (3.175 x 26cm) | 34 | 128 6992 | 1 | Level Switch Rotary (See pg. 57) |
| 25 | 128 0317 | 1 | Level Auger Support | 35 | 129 3412 | 4 | Lifting Bar |
| 26 | 129 4202 | 1 | Level Auger 86" (218cm) | 36 | 129 2836 | 3 | Hopper Side Panel |
| | | | RH Flighting | 37 | 129 2715 | 1 | Hopper Sectional Panel |
| | 000 8161 | 4 | Level Auger Motor Mount Plate | 39 | 128 0292 | 1 | Level Auger Brg. Support Bracket |
| | | | 1/2-13 x 3 1/2" (12.7 x 89mm) | | 001 8209 | 2 | 3/8-16 x 1" (9.5 x 25.4mm) |
| | 000 8170 | 4 | Capscrew (Full Thread) | | | | Hex Washer Head Bolt - Grade 5 |
| | 000 8163 | 8 | 1/2-13 (12.7mm) Flanged Locknut | | 001 8139 | 2 | 3/8" (9.5mm) Lockwasher |
| 27 | 001 5120 | 1 | 1/2-13 (12.7mm) Hex Nut | | 000 8162 | 2 | 3/8-16 (9.5mm) Hex Nut |
| 28 | 128 5051 | 1 | Key-1/4" x 1 1/2" (6.35 x 38.1mm) | 40 | 122 1008 | 1 | Level Auger Bearing Kit |
| | | | Level Auger Front Shaft | | | | (Incl. Ref. 9, 10, 11 & 39 in quantities reqd. for one bearing) |
| | | | 1 1/4" x 10" (3.175 x 25.4cm) | 41 | 129 2839 | - | Auger Cover Long |
| 29 | 121 6241 | 1 | 1 1/4" (31.75mm) SK Bushing | 42 | 129 2838 | 1 | Auger Cover Short |
| | | | Incl. capscrews & lockwashers. | 43 | 128 2761 | 1 | Pan Under Auger |
| 30 | 128 6208 | 1 | 3V/19.0 x 2 Groove Pulley | 44 | 128 2760 | 2 | Auger Pan Support Bracket |
| 30A | 128 1960 | 1 | L.A. Motor Flexible Conduit w/Wires | 45 | 001 8137 | 8 | 3/8"-16 x 2" (9.5 x 50mm) |
| 31 | 128 8951 | 1 | Rubber Strap w/Hook | | | | Capscrew - Grade 5 |
| 32 | 123 6884 | 1 | Round Box 1/2" (12.7mm) | | | | 3/8"-16 (9.5mm) Two-Way Locknut |

DRYER MOTORS, IEC PROTECTORS, FAULTS, AND CONTACTORS

| MOTOR | | | PROTECTOR | | | FAULT | | CONTACTOR | |
|-------|------|--------------|--------------|------|----------------------------|--------------|----------------------------|--------------|----------------------------|
| HP | *FLA | M-C Part No. | M-C Part No. | Amps | Telemecanique Square D No. | M-C Part No. | Telemecanique Square D No. | M-C Part No. | Telemecanique Square D No. |

230V - 1 PHASE - 60 HZ

| | | | | | | | | | | | |
|------|------|----------|----------|-------|-----------------------|----------|------------|----------|-----------------------|----------|-------|
| #1.5 | 9.0 | 124 6627 | 123 6958 | 9-14 | GV2ME16 | 125 6865 | GV2AD-0101 | 123 6929 | LC1D18F7 | | |
| 2 | 12.3 | 121 6862 | 123 6958 | 9-14 | GV2ME16 | 125 6865 | GV2AD-0101 | 123 6929 | LC1D18F7 | | |
| 3 | 17.0 | 128 6829 | 123 6960 | 17-23 | GV2ME21 | 125 6865 | GV2AD-0101 | 123 6951 | LC1D25F7 | | |
| 5 | 28.0 | 201 6815 | 123 6962 | 24-32 | GV2ME32 | 125 6865 | GV2AD-0101 | 123 6930 | LC1D32F7 | | |
| †7.5 | 38.5 | 124 6816 | 123 6963 | 25-40 | GV2ME40 | 125 6866 | GV3A08 | 123 6932 | LC1D50F7 | | |
| †7.5 | 38.5 | 124 6888 | 123 6963 | 25-40 | GV2ME40 | 125 6866 | GV3A08 | 123 6932 | LC1D50F7 | | |
| 10 | 43.0 | 124 6818 | 123 6964 | 40-63 | GV2ME63 | 125 6866 | GV3A08 | 123 6952 | LC1D65F7 | | |
| | | | | | THERMAL | | | | BREAKER | | |
| | | | | | M-C & Telemecanique # | | | | M-C & Telemecanique # | | |
| 15 | 65.0 | 124 6877 | 123 6947 | | LR3D3363 | 63-80 | 123 6971 | 125 6871 | 29450 | 124 6944 | DPA93 |
| 20 | 75.0 | 124 6879 | 123 6972 | | LR3D3365 | 80-104 | 123 6971 | 125 6871 | 29450 | 124 6944 | DPA93 |
| | | | | | | | NFNL36125 | | | | |
| | | | | | | | NFNL36125 | | | | |

200/208V - 3 PHASE - 60 HZ

| | | | | | | | | | |
|------|------|----------|----------|--------|----------|----------|------------|----------|----------|
| #1.5 | 4.5 | 124 6626 | 123 6956 | 4-6.3 | GV2ME10 | 125 6865 | GV2AD-0101 | 123 6950 | LC1D09F7 |
| 2 | 5.9 | 121 6861 | 123 6957 | 6-10 | GV2ME14 | 125 6865 | GV2AD-0101 | 123 6950 | LC1D09F7 |
| 3 | 8.6 | 128 6818 | 123 6958 | 9-14 | GV2ME16 | 125 6865 | GV2AD-0101 | 123 6928 | LC1D12F7 |
| 5 | 14.1 | 128 6815 | 123 6959 | 13-18 | GV2ME20 | 125 6865 | GV2AD-0101 | 123 6929 | LC1D18F7 |
| 7.5 | 20.6 | 121 6948 | 123 6961 | 20-25 | GV2ME22 | 125 6865 | GV2AD-0101 | 123 6951 | LC1D25F7 |
| 10 | 27.5 | 201 6818 | 123 6962 | 24-32 | GV2ME32 | 125 6865 | GV2AD-0101 | 123 6930 | LC1D32F7 |
| 15 | 46.0 | 201 6819 | 123 6964 | 40-63 | GV2ME63 | 125 6866 | GV3A08 | 123 6932 | LC1D50F7 |
| 20 | 54.0 | 125 6934 | 123 6964 | 40-63 | GV2ME63 | 125 6866 | GV3A08 | 123 6952 | LC1D65F7 |
| 25 | 67.0 | 201 6842 | | | | | | | |
| 30 | 80.0 | 128 6986 | 123 6966 | 60-100 | GV7RE100 | 125 6870 | GV7AE11 | 123 6970 | LC1D11F7 |

230V - 3 PHASE - 60 HZ

| | | | | | | | | | |
|------|------|----------|----------|--------|----------|----------|------------|----------|----------|
| #1.5 | 4.2 | 124 6626 | 123 6956 | 4-6.3 | GV2ME10 | 125 6865 | GV2AD-0101 | 123 6950 | LC1D09F7 |
| 2 | 6.0 | 121 6861 | 123 6957 | 6-10 | GV2ME14 | 125 6865 | GV2AD-0101 | 123 6950 | LC1D09F7 |
| 3 | 8.1 | 128 6818 | 123 6958 | 9-14 | GV2ME16 | 125 6865 | GV2AD-0101 | 123 6928 | LC1D12F7 |
| 5 | 13.0 | 128 6815 | 123 6959 | 13-18 | GV2ME20 | 125 6865 | GV2AD-0101 | 123 6929 | LC1D18F7 |
| 7.5 | 19.2 | 121 6948 | 123 6961 | 20-25 | GV2ME22 | 125 6865 | GV2AD-0101 | 123 6951 | LC1D25F7 |
| 10 | 24.8 | 201 6818 | 123 6962 | 24-32 | GV2ME32 | 125 6865 | GV2AD-0101 | 123 6930 | LC1D32F7 |
| 15 | 37.8 | 201 6819 | 123 6964 | 40-63 | GV2ME63 | 125 6866 | GV3A08 | 123 6932 | LC1D50F7 |
| 20 | 50.0 | 125 6934 | 123 6964 | 40-63 | GV2ME63 | 125 6866 | GV3A08 | 123 6952 | LC1D65F7 |
| 25 | 61.0 | 201 6842 | | | | | | | |
| 30 | 72.0 | 128 6986 | 123 6966 | 60-100 | GV7RE100 | 125 6870 | GV7AE11 | 123 6970 | LC1D11F7 |

- C-Frame Unload Auger

‡ - 7/8" shaft

† - 124 6816 has 1-3/8" shaft. 124 6888 has a 1-1/8" shaft.

DRYER MOTORS, IEC PROTECTORS, FAULTS, AND CONTACTORS

| MOTOR | | | PROTECTOR | | | FAULT | | CONTACTOR | |
|-------|------|--------------|--------------|------|----------------------------|--------------|----------------------------|--------------|----------------------------|
| HP | *FLA | M-C Part No. | M-C Part No. | Amps | Telemecanique Square D No. | M-C Part No. | Telemecanique Square D No. | M-C Part No. | Telemecanique Square D No. |

380V – 3 PHASE – 50 HZ

| | | | | | | | | | |
|-------|------|----------|----------|-------|----------|----------|------------|----------|----------|
| ‡1.5 | 2.9 | 127 6860 | 123 6955 | 2.5-4 | GV2ME08 | 125 6865 | GV2AD-0101 | 123 6950 | LC1D09F7 |
| **1.5 | 2.9 | 123 6876 | 123 6955 | 2.5-4 | GV2ME08 | 125 6865 | GV2AD-0101 | 123 6950 | LC1D09F7 |
| 2 | 3.4 | 121 6861 | 123 6956 | 4-6.3 | GV2ME10 | 125 6865 | GV2AD-0101 | 123 6950 | LC1D09F7 |
| **2 | 3.7 | 124 6867 | 123 6956 | 4-6.3 | GV2ME10 | 125 6865 | GV2AD-0101 | 123 6950 | LC1D09F7 |
| 3 | 4.8 | 128 6818 | 123 6956 | 4-6.3 | GV2ME10 | 125 6865 | GV2AD-0101 | 123 6950 | LC1D09F7 |
| 5 | 8.0 | 128 6815 | 123 6957 | 6-10 | GV2ME14 | 125 6865 | GV2AD-0101 | 123 6928 | LC1D12F7 |
| 10 | 15.2 | 210 6818 | 123 6977 | 8-32 | LUCD32FU | 123 6978 | LUA1C11 | 123 6976 | LUB32 |
| 15 | 23.0 | 201 6819 | 123 6977 | 8-32 | LUCD32FU | 123 6978 | LUA1C11 | 123 6976 | LUB32 |
| 20 | 31.0 | 125 6934 | 123 6963 | 25-40 | GV3ME40 | 125 6866 | GV3A08 | 123 6931 | LC1D40F7 |
| 30 | 46.0 | 128 6986 | 123 6964 | 40-63 | GV3ME63 | 125 6866 | GV3A08 | 123 6932 | LC1D50F7 |

460V – 3 PHASE – 60 HZ

| | | | | | | | | | |
|-------|------|----------|----------|-------|----------|----------|------------|----------|----------|
| #‡1.5 | 2.1 | 124 6626 | 123 6955 | 2.5-4 | GV2ME08 | 125 6865 | GV2AD-0101 | 123 6950 | LC1D09F7 |
| ‡1.5 | 2.5 | 127 6860 | 123 6955 | 2.5-4 | GV2ME08 | 125 6865 | GV2AD-0101 | 123 6950 | LC1D09F7 |
| 2 | 3.0 | 121 6861 | 123 6955 | 2.5-4 | GV2ME08 | 125 6865 | GV2AD-0101 | 123 6950 | LC1D09F7 |
| 3 | 4.5 | 128 6818 | 123 6956 | 4-6.3 | GV2ME10 | 125 6865 | GV2AD-0101 | 123 6950 | LC1D09F7 |
| 5 | 6.9 | 128 6815 | 123 6957 | 6-10 | GV2ME14 | 125 6865 | GV2AD-0101 | 123 6950 | LC1D09F7 |
| 7.5 | 10.3 | 121 6948 | 123 6958 | 9-14 | GV2ME16 | 125 6865 | GV2AD-0101 | 123 6928 | LC1D12F7 |
| 10 | 12.4 | 201 6818 | 123 6977 | 8-32 | LUCD32FU | 123 6978 | LUA1C11 | 123 6976 | LUB32 |
| 15 | 18.9 | 210 6819 | 123 6977 | 8-32 | LUCD32FU | 123 6978 | LUA1C11 | 123 6976 | LUB32 |
| 20 | 24.8 | 125 6934 | 123 6962 | 24-32 | GV2ME32 | 125 6865 | GV2AD-0101 | 123 6930 | LC1D32F7 |
| 25 | 31 | 201 6842 | | | | | | | |
| 30 | 36 | 128 6986 | 123 6963 | 40-63 | GV3ME63 | 125 6866 | GV3A08 | 123 6932 | LC1D50F7 |

575V – 3 PHASE – 60 HZ

| | | | | | | | | | |
|-------|------|----------|----------|-------|----------|----------|------------|----------|----------|
| #‡1.5 | 1.7 | 124 6626 | 123 6955 | 2.5-4 | GV2ME08 | 125 6865 | GV2AD-0101 | 123 6950 | LC1D09F7 |
| ‡1.5 | 2 | 127 6862 | 123 6955 | 2.5-4 | GV2ME08 | 125 6865 | GV2AD-0101 | 123 6950 | LC1D09F7 |
| 2 | 2.4 | 127 6816 | 123 6955 | 2.5-4 | GV2ME08 | 125 6865 | GV2AD-0101 | 123 6950 | LC1D09F7 |
| 3 | 3.6 | 127 6814 | 123 6955 | 2.5-4 | GV2ME08 | 125 6865 | GV2AD-0101 | 123 6950 | LC1D09F7 |
| 5 | 5.5 | 127 6847 | 123 6956 | 4-6.3 | GV2ME10 | 125 6865 | GV2AD-0101 | 123 6950 | LC1D09F7 |
| 7.5 | 8.2 | 127 6828 | 123 6957 | 6-10 | GV2ME14 | 125 6865 | GV2AD-0101 | 123 6950 | LC1D09F7 |
| 10 | 10.8 | 127 6857 | 123 6977 | 8-32 | LUCD32FU | 123 6978 | LUA1C11 | 123 6976 | LUB32 |
| 15 | 15.6 | 127 6845 | 123 6977 | 8-32 | LUCD32FU | 123 6978 | LUA1C11 | 123 6976 | LUB32 |
| 20 | 19.5 | 127 6844 | 123 6977 | 8-32 | LUCD32FU | 123 6978 | LUA1C11 | 123 6976 | LUB32 |
| 25 | 25 | 127 6846 | | | | | | | |
| 30 | 30 | 124 6902 | 123 6977 | 8-32 | LUCD32FU | 123 6978 | LUA1C11 | 123 6976 | LUB32 |

- "C" Unload Auger

** - "C" Face Oil Fired Burner

‡ - 7/8" shaft

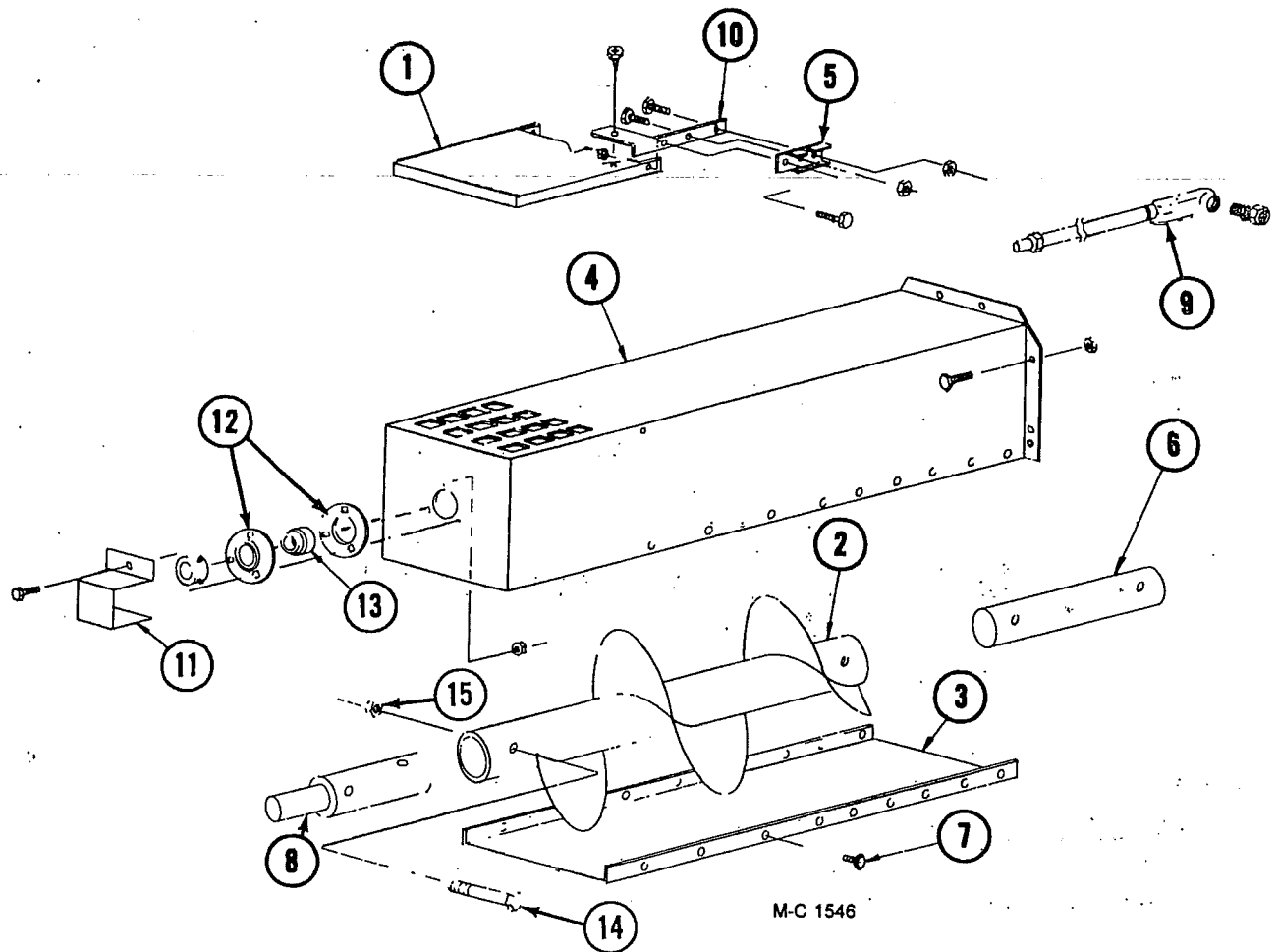
Electrical Components

Infinity Series CF620C & CF820C

(Starting w/Serial No. 58393)

| Part No. | Description | Part No. | Description |
|---|---|----------|--|
| 120 6800 | Unload Switch | 127 6823 | Neutral Lug |
| 121 6849 | Air Pressure Switch | 124 6978 | 60 Minute Adjustable Timer |
| 125 6967 | High Limit Switch - 8 ft. (2.4m) Cap. | 124 6874 | SCR Board (Dart) |
| 125 6965 | 115V Ignition Board | 124 6837 | 1/3HP DC Motor |
| 128 6995 | Style 2 Electrode | 128 6957 | Splitter Block |
| 124 6872 | Flame Sensing Probe | 128 6992 | Level Switch-Diaphragm Type |
| Terminal Block | | 127 6855 | Transformer-208V (750VA) |
| 124 6928 | 12 Position (Black) | 127 6829 | Transformer-460/575V (750VA) |
| 124 6929 | 3 Position (White) | 125 6997 | 13 Amp (208V) Circuit Breaker |
| 125 6805 | 4 Position (Black) | 125 6993 | 4 Amp (460V) Circuit Breaker |
| 115V LP Gas Solenoid Valves | | 125 6993 | 4 Amp (575V) Circuit Breaker |
| 125 7082 | ½" (12.7mm) Solenoid Valve LP Liquid Line | 124 1195 | SCR Speed Control 10 Turn Potentiometer w/Wires 42" (107cm) |
| 123 7036 | ½" (12.7mm) Solenoid Valve (Canadian) | 124 6892 | Multi-Dial |
| 121 7002 | ¾" (19mm) Solenoid Valve Low Fire Manifold | 124 6893 | Thermistor |
| 123 7037 | ¾" (19mm) Solenoid Valve (Canadian) | 124 6955 | Moisture Control Potentiometer w/Wires 60" (152cm) |
| 128 7001 | 1¼" (31.8mm) Solenoid Valve Gas Manifold | 121 6805 | 10 Amp. GLH Fuse (SCR Board) |
| 123 7038 | 1¼" (31.8mm) Solenoid Valve (Canadian) | 124 6995 | Moisture Control Board |
| 115V Natural Gas Solenoid Valves | | 124 6981 | Discharge Meter |
| 121 7002 | ¾" (19mm) Solenoid Valve Low Fire Manifold | 124 6958 | Digital Thermometer Main Frame °F |
| 123 7037 | ¾" (19mm) Solenoid Valve (Canadian) | 123 6920 | Digital Thermometer Main Frame °C |
| 128 7001 | 1¼" (31.75mm) Solenoid Valve Gas Manifold | 124 6961 | Thermocouple 15 ft. (4.6m) Digital Thermometer |
| 123 7038 | 1¼" (31.8mm) Solenoid Valve (Canadian) | 125 6936 | Fuse Holder for 124 6937 & 125 6838 |
| 125 6988 | 8 Amp Circuit Breaker 115V Pole | 124 6937 | 1 Amp. Fuse-Slow Blow (Moisture Control Board & Printer Power Supply) |
| 128 6845 | Stop Button (Red) | 125 6838 | ¾ Amp. Fuse (Monitor Power Supply) |
| 128 6844 | Start Button (Green) | 122 7066 | Monitor Interface Board °Fahrenheit |
| 125 6808 | 125V Indicator Lamp Assembly | 122 7067 | Monitor Interface Board °Celsius |
| 125 6812 | SPST ON-OFF Switch (Ignition) | 122 7071 | Printer Interface Board °Fahrenheit |
| 125 6811 | 3PDT ON-OFF-ON Switch (Discharge Metering Rolls) | 122 7072 | Printer Interface Board °Celsius |
| 125 6809 | Momentary Contact Switch | 122 7065 | Monitor Power Supply |
| 125 6810 | DPDT ON-OFF-ON Switch (Level Auger) | 122 7070 | Printer Power Supply |
| 124 6996 | 0 to 3 Minute Adj. Timer (Level Auger) | 122 7074 | Printer Assembly |
| 124 6841 | Light Bulb Socket | 125 6839 | Switch ON-OFF Printer |
| 124 6842 | 50W Rough Service Bulb | 128 7016 | Grain Sensor w/40 ft. (12.2m) Cable - Monitor |
| 124 6972 | Relay and Timer Socket | 122 7061 | Thermal Paper 3½" x246 ft. (7.94cm x 75m) |
| 021 6809 | Relay | 122 7069 | Calibration Adjust. Potentiometer |
| | | 125 6834 | Push Button for Calibration & Grain Temperature Display |
| | | 122 7068 | Digital Display Meter-Monitor |
| | | 121 6840 | Low Pressure Gas Interlock Switch (Canadian) |
| | | 121 6841 | Low Pressure Gas Interlock Transducer (Canadian) |
| | | 124 6916 | High Pressure Gas Interlock Switch (Canadian) |
| | | 124 6917 | High Pressure Gas Interlock Transducer (Canadian) |

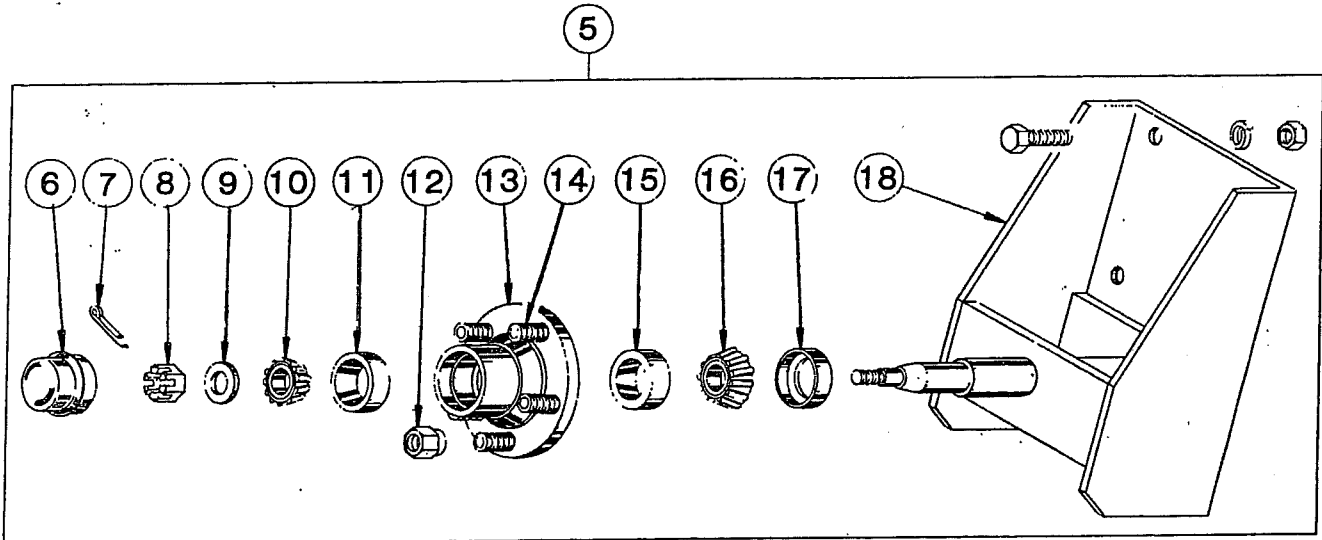
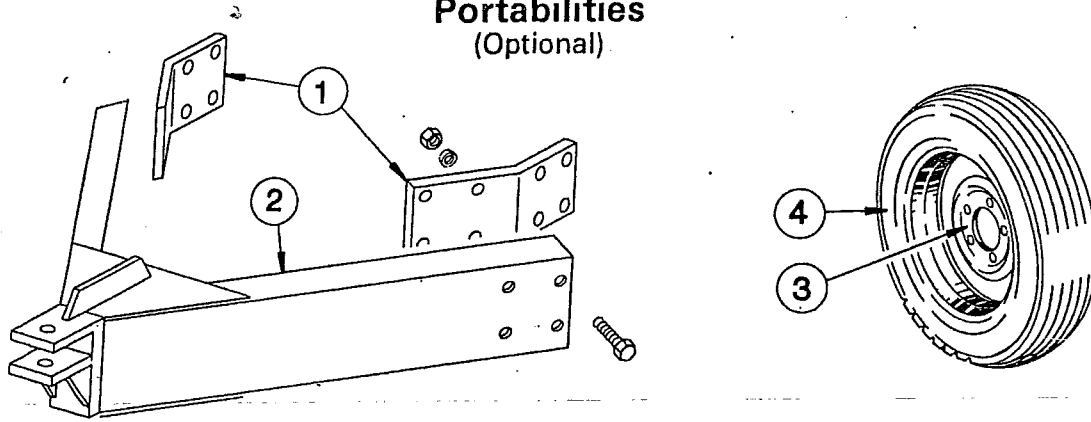
Optional - 10" (25.4cm) Unloading Auger Extension Kit,
 2 ft. (.61m) - 127 1229,
 4 ft. (1.22m) - 127 1230, and
 6 ft. (1.83m) - 127 1233



| Ref. | Part No. | Qty. | Description | Ref. | Part No. | Qty. | Description |
|------|----------|------|--|------|----------|------|---|
| 1 | 128 4712 | 1* | Over Load Door | 8 | 124 5611 | 1* | U.A. Output Shaft |
| 2 | 128 0310 | 1 | 2 ft. (.61m) Extension Auger | 9 | 127 1231 | 1 | 2 ft. (.61m) Extension Liquatite Assembly |
| | 128 0312 | 1 | 4 ft. (1.22m) Extension Auger | | 127 1232 | 1 | 4 ft. (1.22m) Extension Liquatite Assembly |
| | 128.0315 | 1 | 6 ft. (1.83m) Extension Auger | | 127.1234 | 1 | 6 ft. (1.83m) Extension Liquatite Assembly |
| 3 | 124 4474 | 1 | 2 ft. (.61m) Bottom Cover | 10 | 128 2937 | 1* | Bulb Mount |
| | 124 4475 | 1 | 4 ft. (1.22m) Bottom Cover | 11 | 128 3011 | 1* | Stub Shaft Guard |
| | 124 4476 | 1 | 6 ft. (1.83m) Bottom Cover | 12 | 001 6004 | 2* | 1 ¼" (31.8mm) Bearing Flangettes |
| 4 | 128 0311 | 1 | 2 ft. (.61m) Discharge Housing | 13 | 001 6003 | 1* | 1 ¼" (31.8mm) Bearing w/Collar |
| | 128 0313 | 1 | 4 ft. (1.22m) Discharge Housing | 14 | 000 8229 | 4 | ⅜-16 x 2 ¼" (9.5 x 69.9mm) HHCS Grade 5 ZP |
| | 128 0314 | 1 | 6 ft. (1.83m) Discharge Housing | 15 | 000 8205 | 4 | ⅜-16 (9.5mm) Flanged Locknut |
| 5 | 120 6801 | 1* | Switch Mount Clip | 16 | 120 6800 | 1* | Unload Switch |
| 6 | 128 5618 | 1* | Unload Auger Link | | | | |
| 7 | 001 8202 | - | 5/16-18 x ¾" (7.9 x 19mm) HWH Gr.5 Tapping Bolt (Qty. - 8, 16 or 24) | | | | |

*Not included in kit when field installed.

Portabilities (Optional)



M-C 980

120 1030 - 4 Wheel Portabilities (Incl. ref. 1 & 2 and four of ref. 3 & 5 - less tires)

120 1031 - 6 Wheel Portabilities (Incl. ref. 1 & 2 and six of ref. 3 & 5 - less tires)

120 1043 - 8 Wheel Portabilities (Incl. ref. 1 & 2 and eight of ref. 3 & 5 - less tires)

120 1040 - Additional Portabilities (Incl. two of ref. 3 & 5 - less tires)

| Ref. | Part No. | Qty. | Description | Ref. | Part No. | Qty. | Description |
|------|----------|------|---|------|----------|------|--|
| 1 | 128 3671 | 2 | Pole Mount Brkt. | 6 | 001 8996 | 1 | Hub Cap |
| | 128 8196 | 8 | 3/4 - 10 x 2 1/2" Capscrew - Grd. 5 | 7 | 001 8252 | 1 | Cotter Pin - 1/8" x 1" |
| | 000 8182 | 8 | 3/4" Lockwasher | 8 | 001 8253 | 1 | Spindle Nut |
| | 000 8165 | 8 | 3/4 - 10 Hex Nut | 9 | 001 8254 | 1 | Spindle Washer |
| 2 | 120 0047 | 1 | Dryer Pole | 10 | 001 6000 | 1 | Bearing Cone - Outer |
| | 128 8195 | 8 | 3/4 - 10 x 2" Capscrew - Grd. 5 | 11 | 002 6000 | 1 | Bearing Cup - Outer |
| | 000 8182 | 8 | 3/4" Lockwasher | 12 | 001 8989 | 5 | 1/2 - 20 Lug Nut - 45° |
| | 000 8165 | 8 | 3/4 - 10 Hex Nut | 13 | 001 8992 | 1 | Wheel Hub Ass'y. - 5 Bolt (Incl. ref. 11, 14 & 15) |
| 3 | 001 8993 | 1 | 5 Bolt Wheel - 15" | 14 | 002 8152 | 5 | 1/2 - 20 x 1 1/2" Stud |
| 4 | 127 8990 | 1 | 7.60 x 15 - 6 Ply Tubeless Tire | 15 | 002 6001 | 1 | Bearing Cup - Inner |
| 5 | 120 1028 | 1 | Wheel Spindle & Hub Ass'y. (Inc ref. 6 thru 18) | 16 | 001 6001 | 1 | Bearing Cone - Inner |
| | 000 8146 | 6 | 5/8 - 11 x 1 1/2" Capscrew - Grd. 5 | 17 | 001 8991 | 1 | Seal |
| | 000 8181 | 6 | 5/8" Lockwasher | 18 | 120 0031 | 1 | Wheel Mount |
| | 000 8164 | 6 | 5/8 - 11 Hex Nut | | | | |

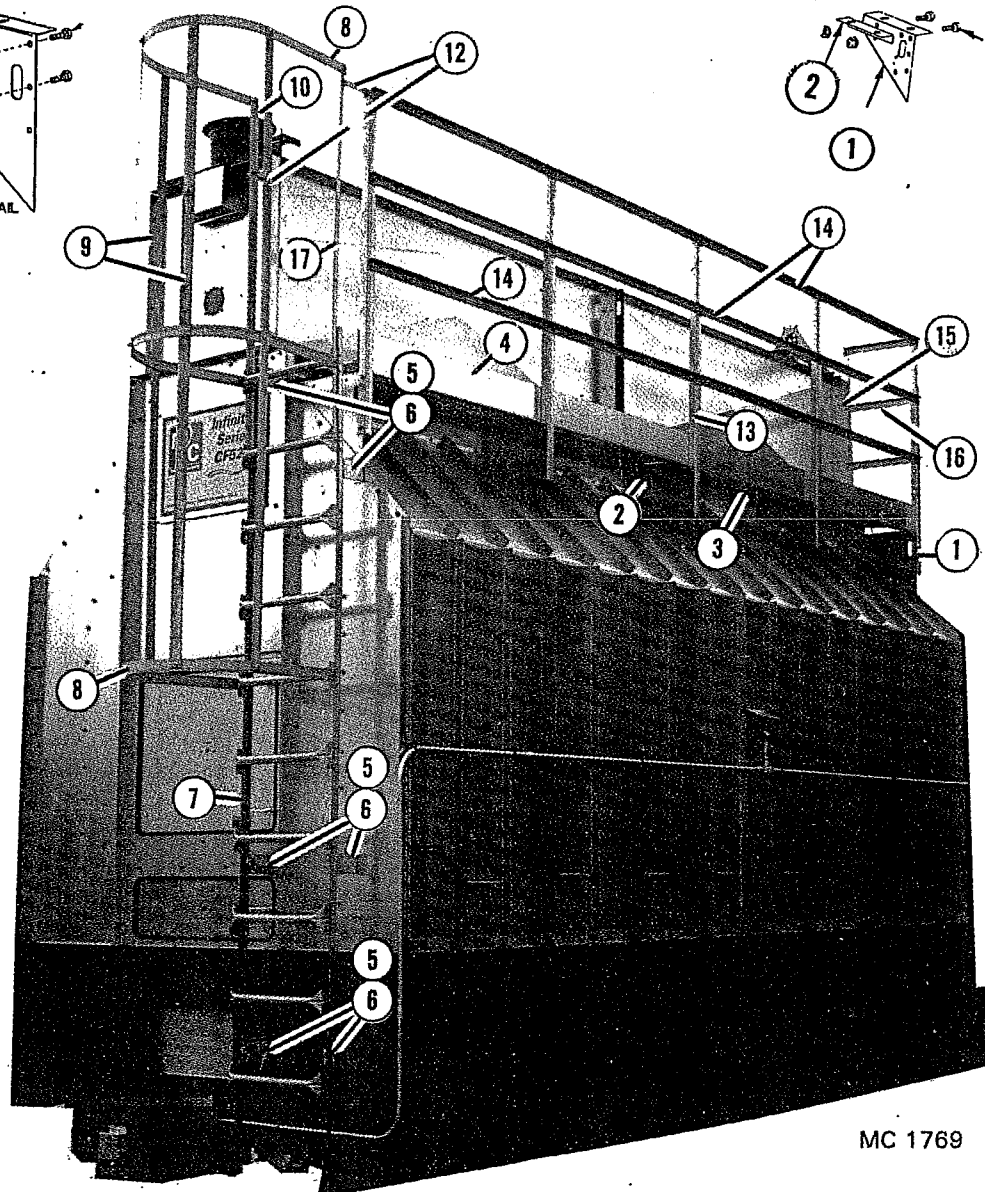
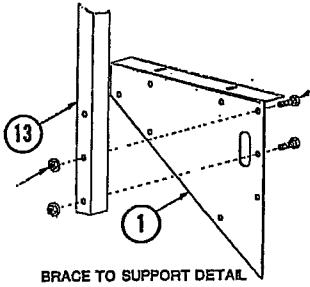
Infinity Wet Hopper Walkway (Optional)

8 ft. 16 ft. 24 ft.
(2.4m)(4.9m)(7.3m)

| Ref. | Part No. | Qty. | Qty. | Qty. | Description |
|------|----------|------|------|------|---|
| 1 | 129 2600 | 3 | 5 | 7 | Bridge Support |
| 2 | 129 2602 | 2 | 2 | 3 | Grating Support |
| 3 | 129 8700 | 1 | 2 | 3 | Walkway Grating 8 ft. (2.4m) |
| | 120 8994 | 6 | 12 | 18 | Grating Anchor Clip |
| | 001 8276 | 6 | 12 | 18 | 5/16-18x3" (7.9x76mm) Carriage Bolt |
| | 000 8304 | 6 | 12 | 18 | 5/16"(7.9mm) Flanged Locknut |
| 4 | 128 2683 | 1 | 2 | 3 | Walkway Toe Kick 96"(244cm) |
| 5 | 128 2685 | 6 | 6 | 6 | Ladder Mounting Bracket |
| | 000 8306 | 6 | 6 | 6 | 5/16-18x 3/4"(7.9x19mm) Washer Head Bolt |
| | 000 8304 | 6 | 6 | 6 | 5/16"(7.9mm) Flanged Locknut |
| 6 | 490 8704 | 6 | 6 | 6 | Ladder Bracket Clip |
| 7 | 490 8703 | 1 | 1 | 1 | Ladder 10 ft. (3m) |

8 ft. 16 ft. 24 ft.
(2.4m)(4.9m)(7.3m)

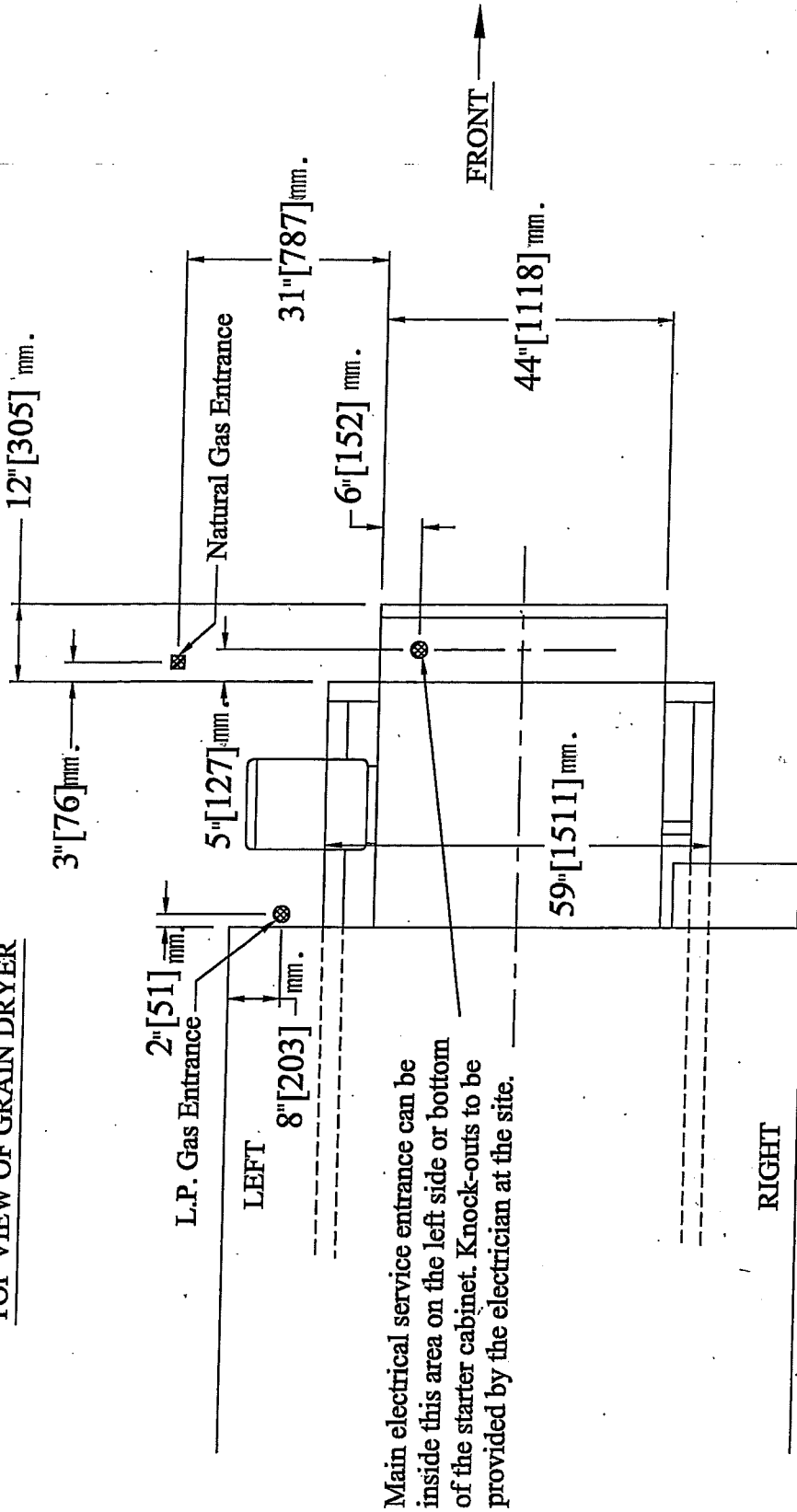
| Ref. | Part No. | Qty. | Qty. | Qty. | Description |
|------|----------|------|------|------|---|
| 8 | 128 2015 | 3 | 3 | 3 | Ladder Cage Hoop |
| | 000 8307 | 12 | 12 | 12 | 5/16-18x 3/4" (7.9x19mm) Round Head Bolt |
| | 001 8202 | 4 | 4 | 4 | 5/16-18x 3/4" (7.9x19mm) Hex Bolt |
| | 000 8169 | 16 | 16 | 16 | 5/16"(7.9mm) Flanged Locknut |
| 9 | 129 2033 | 4 | 4 | 4 | Ladder Cage Strap 8 ft. (2.4m) |
| 10 | 129 2031 | 1 | 1 | 1 | Ladder Extension Left 61" (155cm) |
| 11 | 129 2030 | 1 | 1 | 1 | Ladder Extension Right 61" (155cm) |
| 12 | 129 2624 | 2 | 2 | 2 | Top Cage Mount Bracket |
| 13 | 129 2021 | 3 | 5 | 7 | Guard Rail Brace 55 1/2" (141cm) |
| 14 | 129 2004 | 3 | 6 | 9 | Guard Rail 98" (249cm) |
| 15 | 129 2623 | 1 | 1 | 1 | Short Rail Support Bracket |
| 16 | 129 2032 | 3 | 3 | 3 | Short Guard Rail 18 1/2" (46cm) |



MC 1769

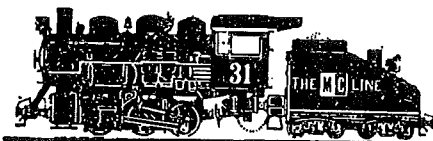
Dimensions and locations apply only to 75 & 80 series grain dryers

TOP VIEW OF GRAIN DRYER



Main electrical service entrance can be inside this area on the left side or bottom of the starter cabinet. Knock-outs to be provided by the electrician at the site.

Note: Fuel supply attachment elevation.
Dimension is from bottom of dryer base skid up to beginning of stand pipe.
L.P. Entrance is 12" from bottom of skid to beginning of stand pipe.
Natural Gas entrance is 26" from bottom of skid to beginning of stand pipe.
(66cm.)



Iron Horse Quality