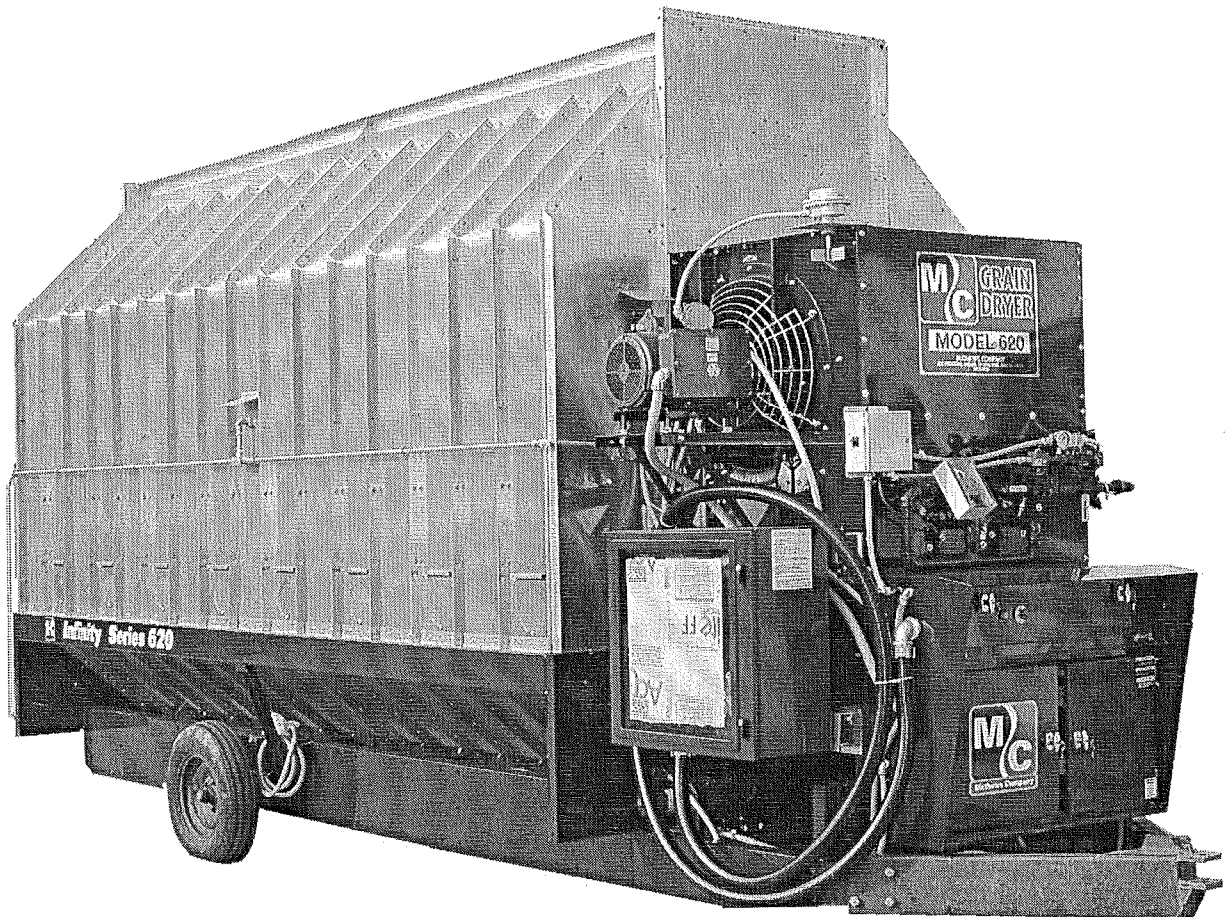


\$7.50



INFINITY SERIES
Models CF620C & CF820C
(EM and EMS)
Continuous Flow Grain Dryers
Equipped with Centrifugal Fan
(Starting w/Serial No. 58624)

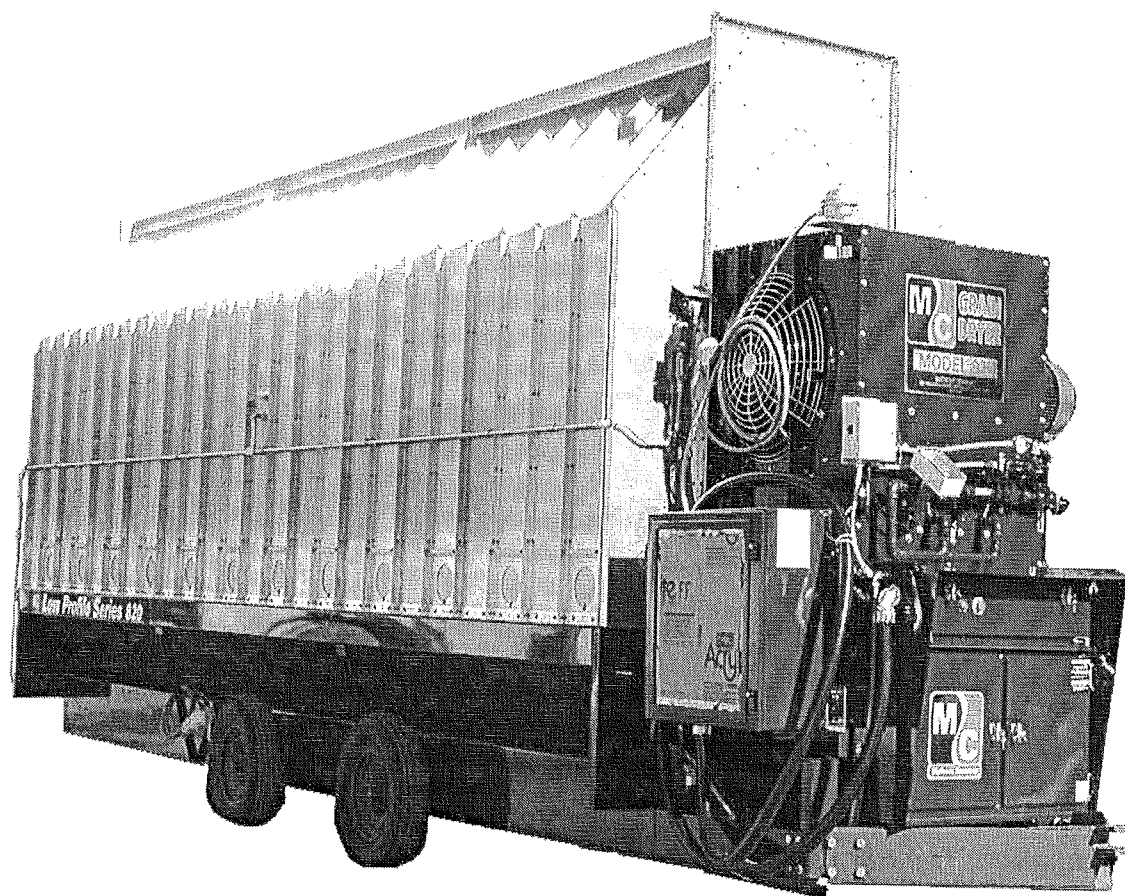


Model CF620C

PARTS CATALOG

Form No. D401 February 2006

Mathews Company / 500 Industrial Avenue
P.O. Box 70, Crystal Lake, IL 60039-0070 USA
PHONE 815/459-2210 • FAX 815/459-5889
www.mathewscompany.com



Model CF820C

CONTENTS

Page

Introduction

Parts Ordering Instructions.....	1
Model and Serial Number Location	1
Capscrew Grade Identification	1

Parts

Air Pressure Switch	27
Augers	
Level	28-31
Unload.....	2-6
Unload Extension Kits	35
Belts	
Level Auger.....	28-29
Unload Auger	14
Burner (Venturi)	14-15
Cabinets	
115V Remote Cabinet Inside Door	18
115V Remote Cabinet Mounting Board with Components	19
Base Section Motor Control Cabinet 620/820.....	20-21
Circuit Breakers	
Level Auger, Unload Auger and Fan Motor(s) - Base Section Cabinet.....	32-33
Coils	
Gas Vapor 1¼" (31.8mm) Solenoid Valve	17
Gas Vapor ¾" (19mm) Low Fire Solenoid	16
Liquid Propane Line ½" (12.7mm) Solenoid Valve	16
Control Panel Lights, Switches and Controls - Remote Cabinet	18
Decals.....	21 & 23
Electrical Components in 115V Remote Cabinet	19
Electrical Components in 115V Base Section Control Cabinet	22
Electrical Components in Base Section Motor Control Cabinet.....	20-21
Electrical Components List	34
End & Floor Panels 620 & 820C.....	10-11
Fan(s), Motor(s) & Motor Mounts	23-24
Fan Housing, Decals, and Guards	23
Fan Housing Supports and Thermometer	26
Flame Sensing Probe	14-15
Guards	
Fan.....	23
Level Auger Motor.....	28-29
SCR Drive	12-13
High Limit Switch	27
Hopper (Wet Holding) 620 & 820	28-31

Continued on next page

	Page
Ignition Board	13
Ignition Wires.....	13-14
Level Auger	28-31
Belts	28-29
Motor.....	28-29
Motor Mount.....	28-29
Switch Assembly (Wet Hopper Level Indicator)	27-31
Lights, Control Panel	18 & 22
LP Gas Liquid Line Manifold.....	17
LP Gas Manifold	17
Low Fire Manifolds, LP & Natural Gas	16
Manifolds	
LP Gas	16
Natural Gas	17
Metering Rolls 620/820.....	2-5
Modulating Valves	17
Modulating Valve Power Elements	17
Modulating Valve Repair Kits.....	17
Moisture Control	
Potentiometer.....	18
Moisture Control Board	19
Thermistor Sensor	27
Motors.....	32-33
Natural Gas Manifold.....	17
Portabilities (Optional)	36
Pressure Gauge (Gas)	17
Pressure Regulator - High (LP Gas)	17
Pressure Regulator - High (LP Gas) Repair Parts.....	17
Relay (Main)	19
Relief Valve - LP Gas Liquid Line.....	17
SCR Drive Unload System	
Control Board.....	19
Motor and Gear Box.....	12
Multi Dial with Lock	18
Potentiometer.....	18
Screens	
Base Screens.....	7
Upper Screens	8-9

Continued on next page

	Page
Solenoid Valves	17
1¼" (31.8mm) - Burner Manifolds	16
½" (12.7mm) - LP Gas Liquid Line	16
¾" (19mm) Low Fire	17
Solenoid Valve Repair Kits	18
Switches, Control Panel	19, 19A & 22
Terminal Tracks	27
Thermistor Sensor	26
Thermometer - Mechanical	18
Thermometer - Digital	18
Timers	19
0 to 3 Minute Adjustable - Level Auger	19
60 Minute Adjustable - Low Grain Level and Cold Grain	21
Transformers - 460/575 to 115 Volt	21
Unload Auger 10" (25.4cm)	4
Auger	12
Belts	37
Extension Kits (Optional) 2 ft. (.61m), 4 ft. (1.22m), or 6 ft. (1.83m)	12
Motor	6
Pans	2, 5 & 34
Unload Shut Off Switch	14
Vaporizer Coil - LP Gas - 620C & 820C	37
Walkway (Optional)	

Wiring Diagrams

NOTES

This image shows a single sheet of white paper with horizontal blue or grey ruling lines. The lines are evenly spaced and run across the width of the page. There are approximately 20 lines visible. The paper appears to be a standard notebook page, possibly from a composition book. The edges of the paper are slightly irregular, suggesting it might be a scan of a physical document. There is no handwriting or other markings on the page.

INTRODUCTION

Parts Ordering Instructions

1. Order parts from your local M-C Dealer or distributor.
2. Always furnish the Grain Dryer model and serial number. This information is stamped on the serial number plate.
3. When ordering parts be sure to furnish the part number, description and quantity required.

NOTE: Attaching hardware is listed, but not included with, the main part. It must be ordered separately.

4. Inspect all shipments upon receipt. If any packages and/or boxes are missing, or parts are damaged, file a claim with the carrier immediately. Failure to do so may void a claim. Check the shipment against the packing list carefully. Report any shortages to the shipper immediately.
5. Do not return any parts to the Mathews Company without a "Return Goods Authorization" from the factory. All return parts shipments must be shipped prepaid (COD shipments will not be accepted). Shipments must also include the following:
 - A. A letter of explanation including the "Return Goods Authorization, Number," your name and address.
 - B. A list of all parts being returned. List must include part numbers, description, quantity, and original invoice number.

Model and Serial Number Location

The model and serial number of your Grain Dryer are stamped on a plate located on the left front end

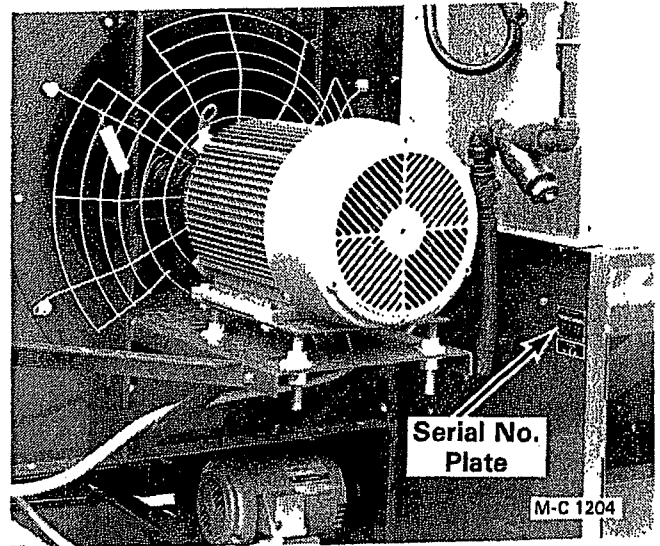


Figure 1

M-C FARM EQUIPMENT	
MODEL NO.	SERIAL NO.

Figure 2

panel, see Figure 1. On late production dryers, the plate is on the dryer front base panel just below the location shown in Figure 1. Record the model and serial number in the blank spaces in Figure 2.

Capscrew Grade Identification

There are four grades of hex-head capscrews. Grade 1 and 2 are common capscrews, grade 5 and 8 are used when greater strength is required. Each grade can be identified by the marking on the head of the capscrew, see chart below.

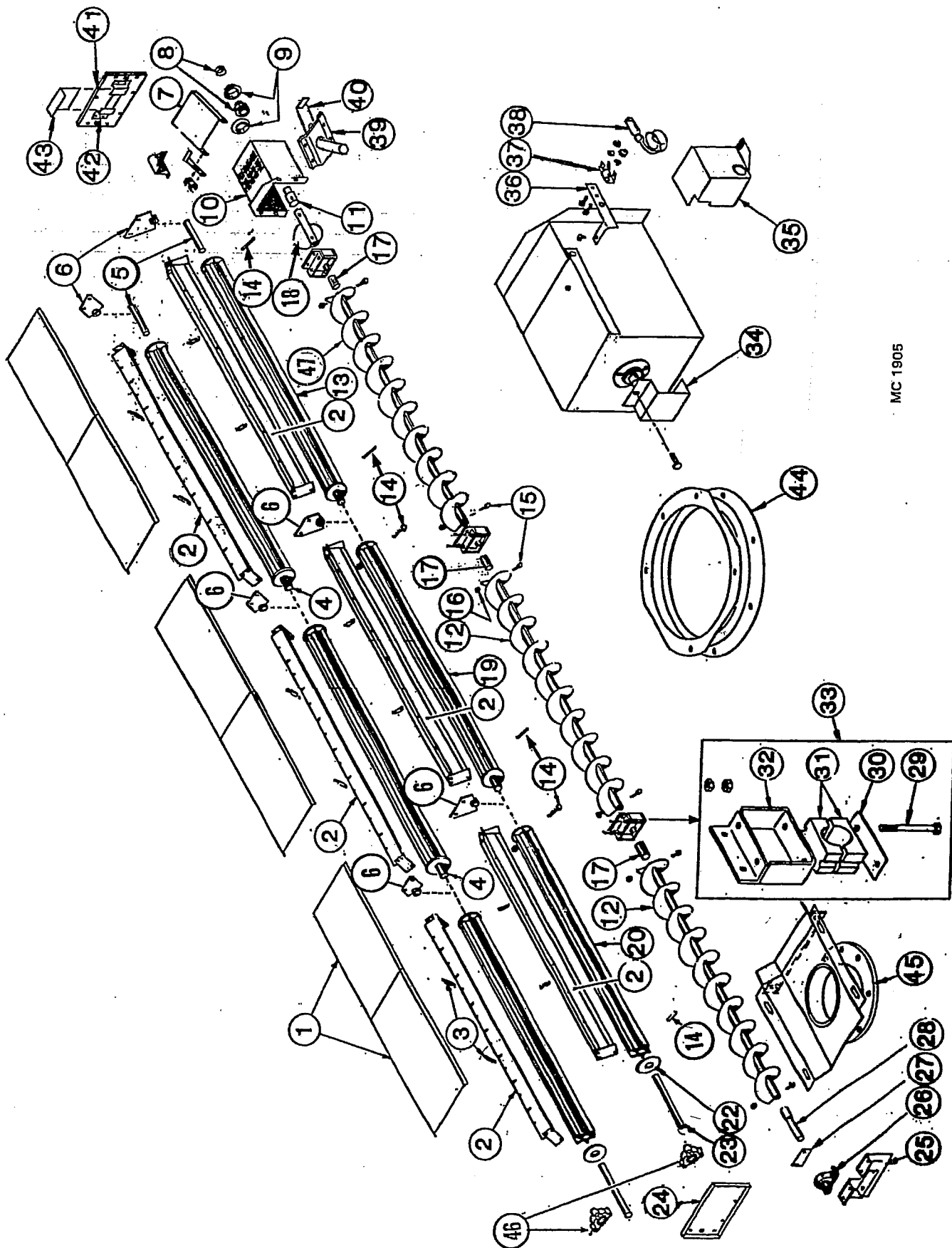
When replacing capscrews, be sure to use the correct size and grade. If a specific grade is not shown as part of the description, the capscrew is a grade 1 or 2.

CAPSCREW GRADE IDENTIFICATION CHART

S.A.E. Grade	Description	Capscrew Head Marking*
1	WILL HAVE A PLAIN HEAD - NO RADIAL LINES	
2	Low or Medium Carbon Steel Not Heat Treated	
5	WILL HAVE 3 RADIAL LINES Quenched and Tempered Medium Carbon Steel	
8	WILL HAVE 6 RADIAL LINES Quenched and Tempered Special Carbon or Alloy Steel	

*The center marking identifies the capscrew manufacturer.

Models CF620C & CF820C
Metering Rolls and Unload Auger



MC 1905

Models CF620C & CF820C
Metering Rolls and Unload Auger

16 ft. 24 ft.
(4.9m) (7.3m)

Ref.	Part No.	Qty.	Description
1	128 2890	4	Unload Auger Cover
	001 8111	8	5/16-18 (7.9mm) Clip Nut
	001 8114	8	5/16-18x3/4" (7.9x19mm) Wing Screw
	000 8173	8	5/16" (7.9mm) Flatwasher
2	128 0350	4	Inner Screen Mount
	001 8202	18	5/16-18 x 3/4" (7.9 x 19mm) Hex Washer Head Bolt
	000 8169	18	5/16-18 (7.9mm) Flanged Locknut
3	128 8958	8	Support Rod 3/8"x 4 3/8" (9.5 x 111mm)
	000 8173	8	5/16" (7.9mm) Flatwasher
	000 8168	24	3/8-16 (9.5mm) Flanged Locknut
4	121 5043	2	Rear & Center Metering Roll Shaft - 1 1/4" x 7" (3.2 x 17.8cm)
5	121 5042	2	Rear Metering Roll Stub Shaft - 1 1/4" x 5" (3.2 x 12.7cm)
6	128 1063	4	Metering Roll Brg. w/Bronze Bushing
	001 8202	8	5/16-18 x 3/4" (7.9 x 19mm) Hex Washer Head Bolt
	000 8169	8	5/16-18 (7.9mm) Flanged Locknut
7	124 2884	1	Over Load Door
	001 8210	2	3/8-16 x 3/4" (9.5 x 19mm) Hex Washer Head Bolt
	000 8205	2	3/8-16 (9.5mm) Top Lock Flanged Nut
8	001 6003	1	1 1/4" (31.75mm) Bearing w/Lock Collar
9	001 6004	2	1 1/4" (31.75mm) Bearing Flangette
	001 8269	3	3/8-16 x 1" (9.5 x 25.4mm) Carriage Bolt
	000 8168	3	3/8-16 (9.5mm) Flanged Locknut
10	128 0421	1	Unload Auger Discharge Round (Front Unload - See Note 1)
	001 8210	6	3/8-16 x 3/4" (9.5 x 19mm) Hex Washer Head Bolt
	000 8205	6	3/8-16 (9.5mm) Top Lock Flanged Nut
	000 8137	2	1/2-13 x 1 1/4" (12.7x31.75mm) Hex Bolt-Grd.5
	000 8180	2	1/2" (12.7mm) Lockwasher
	000 8163	2	1/2-13 (12.7mm) Hex Nut

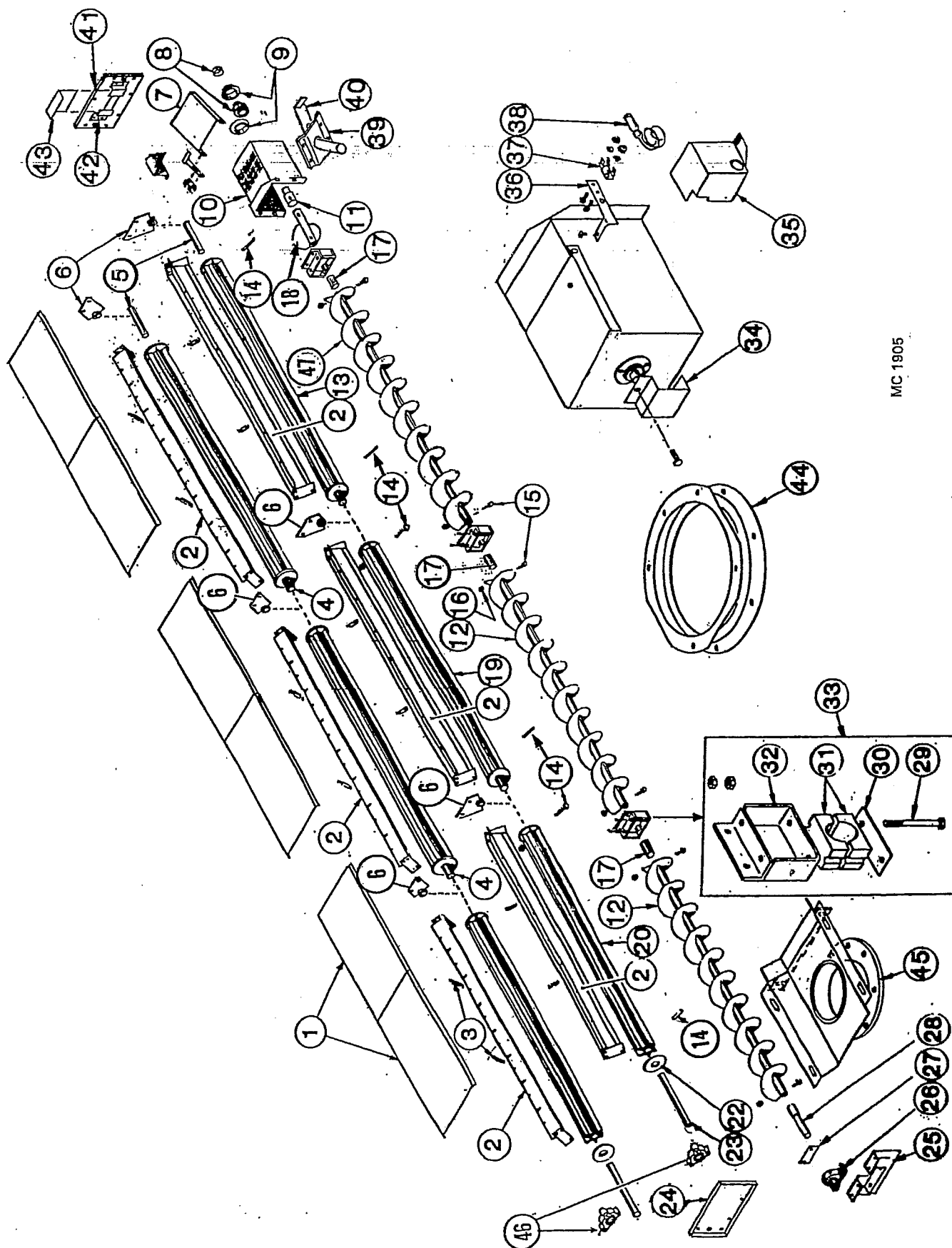
16 ft. 24 ft.
(4.9m) (7.3m)

Ref.	Part No.	Qty.	Description
11	124 5611	1	Unload Auger Output Shaft (Front Unload - See Note 1)
12	128 0244	1	Front & Center Unload Auger Section 10" (25.4cm)
13	121 1082	2	Rear Metering Roll Assembly (incl. shafts)
14	000 8114	8	5/16-18x 2 1/2" (7.9x63.5mm) Capscrew
	000 8222	8	5/16" (7.9mm) Lockwasher
	000 8159	8	5/16-18 (7.9mm) Hex Nut
15	000 8229	8	3/8-16 X 2 3/4" (9.5 x 70mm) Capscrew- Grd.5
16	000 8205	8	3/8" (9.5mm) Top Lock Flanged Nut
17	128 5618	2	Unload Auger Link 1-5/16 x 9 3/8" (49.2mm x 23.8cm)
18	128 0309	1	Standard Auger Weld
19	121 1083	-	Center Metering Roll Assembly w/shafts
20	128 5784	2	Front Metering Roll
22	121 4438	AR	Metering Roll Washer - 11 Gauge
	128 4970	AR	Metering Roll Washer - 16 Gauge
23	128 5054	2	Front Metering Roll Shaft - 1 1/4" x 6 1/4" (3.18 x 15.9cm)
24	128 2894	1	Base Panel Access Door - 17 1/2" x 10 1/2" (44.5 x 27cm)
	001 8284	14	5/16-12 x 1/2" (7.9 x 12.7mm) Self Tapping Screw
25	128 0247	1	Unload Auger Front Plate
	001 8210	4	3/8-16 x 3/4" (9.5 x 19mm) Hex Washer Head Bolt
	000 8168	4	3/8-16 (9.5mm) Flanged Locknut

NOTE 1: Dryers w/Front Unload - Ref. 10 use 127 4431 and
Ref. 11 use 128 5994 output shaft.

Continued on next page

Models CF620C & CF820C
Metering Rolls and Unload Auger



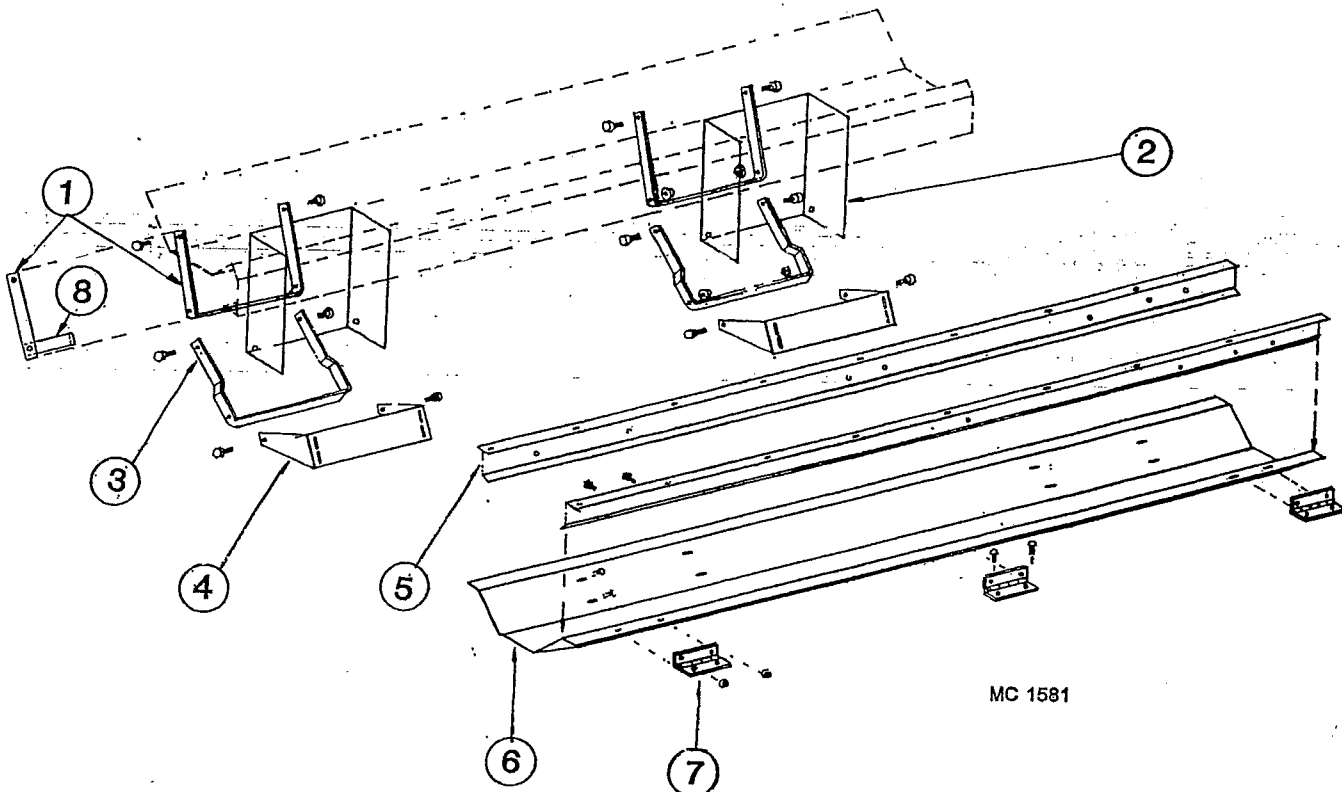
MC 1905

Models CF620C & CF820C
Metering Rolls and Unload Auger

16 ft. 24 ft.
(4.9m) (7.3m)

Ref. Part No.	Qty.	Qty.	Description
26	001 6011	1	1-7/16" (36.5mm) Bore Pillow Block Bearing
	001 8299	2	1/2-13 x 1 1/4" (12.7 x 44.5mm) Capscrew-Grd. 8 w/Nylock
	001 8257	2	1/2" (12.7mm) SAE Flatwasher
	000 8163	2	1/2-13 (12.7mm) Hex Nut
27	128 3008	1	Front Seal Plate
	000 8184	4	8-18 x 1/2" (12.7mm) Sheet Metal Screw
28	124 5610	1	Unload Auger Input Shaft 1-5/16 x 9 5/8" (49.2mm x 23.8cm) Tapered at front to 1-7/16" (36.5mm)
29	001 8168	4	1/2-13 x 4 1/2" (12.7 x 114.3mm) Capscrew - Grd. 5
	000 8163	8	1/2-13 (12.7mm) Hex Nut
30	128 0285	2	Unload Auger Support Weld
31	128 6020	2	Wood Bearing 1-15/16" (49.2mm) (2 Halves)
32	128 0287	2	Unload Auger Bearing Bracket
	000 8137	4	1/2-13 x 1 1/4" (12.7 x 31.75mm) Capscrew - Grd. 5
	000 8180	4	1/2" (12.7mm) Lockwasher
	000 8163	4	1/2-13 (12.7mm) Hex Nut
33	122 1007	2	Unload Auger Bearing Kit (Incl. Ref. 30 thru 33 in quantities required for one bearing)
34	128 3011	1	Output Shaft Guard
35	128 4896	1	Shut Off Switch Cover
	001 8284	2	5/16-12 x 1/2" (7.9 x 12.7mm) Self-Tapping Screw
36	128 2937	1	Switch Mount
37	120 6801	1	Switch Mount Clip
	000 8282	2	6-32 x 1/4" (6.35mm) Machine Screw
	000 8185	2	6-32 Flanged Locknut
38	120 6800	1	Shut Off Switch
39	128 0379	1	Grain Sampler
40	128 2883	1	Slide Gate Door - Sampler
41	128 2954	1	Base Panel Access Door w/Slot
42	128 2885	2	Access Door Bracket
43	128 2887	1	Access Door Slot Cover
44	128 0343	1	Discharge Ring 10" (25.4cm)
45	128 0331	1	10" (25.4cm) Front Unload Weldment (Optional Kit #127 9119)
46	001 6016	2	1 1/4" (31.8mm) 3 Bolt Flange Bearing S/N #57386 & Up
	000 8120	6	3/8-16 x 1" (9.5 x 25.4mm) Round Truss Head Bolt
	000 8205	6	3/8-16 (9.5mm) Top Lock Flange Nut
47	128 0351	1	Rear Unload Auger Section 10" (25.4cm) w/Monitor Cut-Out

UNLOAD AUGER PANS



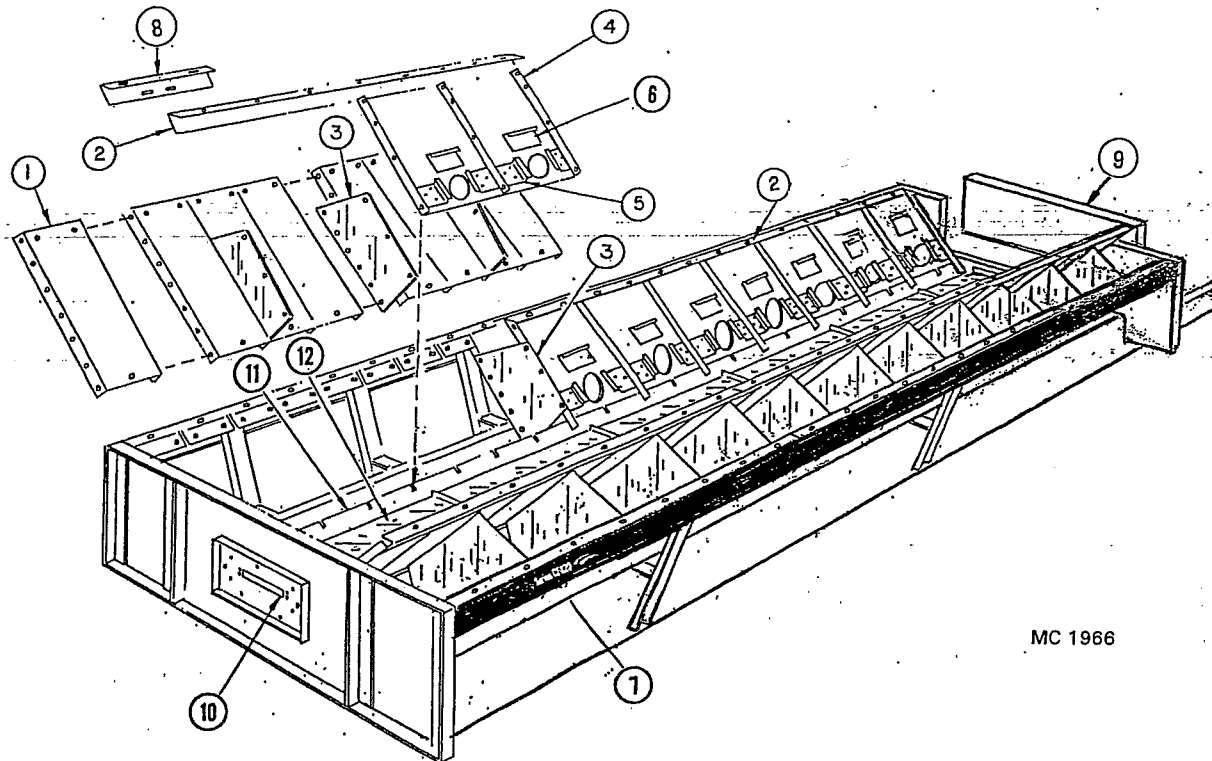
2

WARNING DECAL
MOUNTS ON SIDE
OF BRACKET

16 ft. 24 ft.
(4.9m) (7.3m)

Ref.	Part No.	Qty.	Qty.	Description
1	128 2029	4	6	Auger Dump Arm – Upper
2	128 8355	4	6	Warning Decal (not shown)
3	138 2030	4	6	Auger Dump Arm – Lower
4	128 2751	4	6	Bottom Link Pivot Base
5	128 2673	4	6	Pan Hinge Angle
6	128 2752	1	2	Front & Center Auger Dump Pan
	128 0351	1	1	Rear Auger Pan w/Monitor Cut-Out
	128 3015	1	1	Monitor Cut-Out Seal Plate
7	128 8957	6	9	Hinge
8	128 2032	4	6	Auger Dump Arm Handle

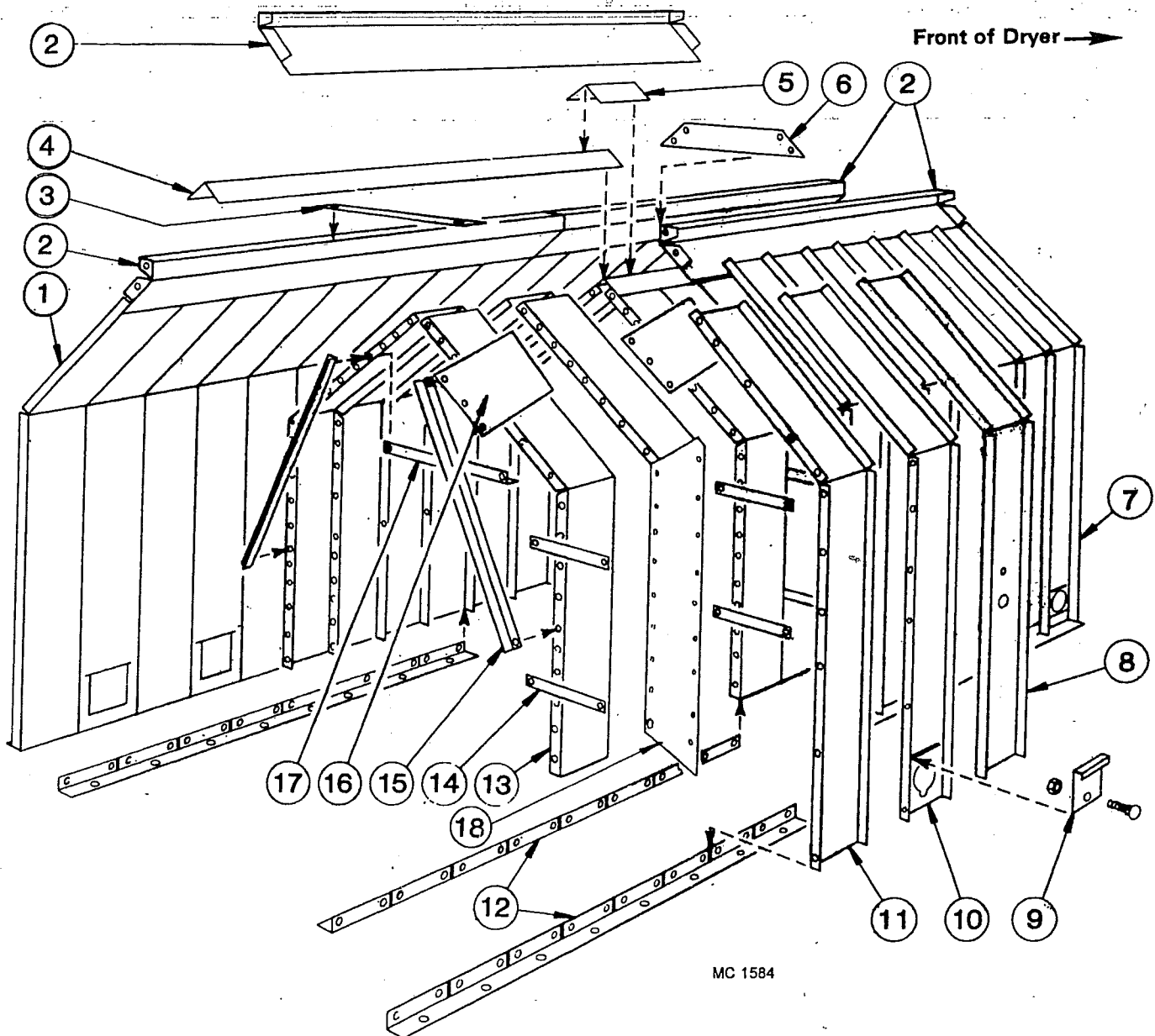
BASE SECTION LOWER SCREENS



MC 1966

8 ft. 16 ft. 24 ft. (2.4m) (4.9m) (7.3m)					Description	8 ft. 16 ft. 24 ft. (2.4m) (4.9m) (7.3m)					Description
Ref.	Part No.	Qty.	Qty.	Qty.		Ref.	Part No.	Qty.	Qty.	Qty.	
1	-----	-	-	-	Lower Outer Screen	8	129 3070	-	2	4	Seal Angle
	123 5215	16	32	48	Standard Aluminum - 3/32"	9	128 4570	1	1	1	Base Filler Panel-37x13½"
	127 2945	16	32	48	Small Seed (Galv.) - 1/16"		001 8209	12	12	12	¾-16 x 1" (9.5 x 25.4mm)
	123 5320	16	32	48	Stainless - 3/32" (2.38mm)						Hex Washer Head Bolt Grd. 5
	124 2003	16	32	48	Canola (Galv.) - .050" (1.29mm)	10	128 2954	1	1	1	Base Panel Access Door w/Slot
2	128 2739	2	4	6	Lower Screen Mount Angle		001 8284	7	7	7	5/16-18x½" (7.9 x12.7mm)
3	128 2855	6	14	22	Lower Screen Stiffener						Self-Tapping Screw
4	-----	-	-	-	Lower Inner Slope Screen	11	128 0350	2	4	6	Inner Screen Mount
					w/Clean-Out - 24"(61cm) wide		001 8202	12	18	24	5/16-18 x ¾" (7.9x19mm)
	124 2000	8	16	24	Standard Galvanized - 3/32"						Hex Washer Head Bolt
	124 2001	8	16	24	Small Seed (Galv.) -1/16" (1.59mm)		000 8169	12	18	24	5/16-18 (7.9mm) Flanged
	124 2026	8	16	24	Canola (Galv.) - .050" (1.29mm)						Locknut
5	124 2866	16	32	48	Slope Door Retainer	12	128 2890	2	4	6	Unload Auger Cover
	000 8244	48	96	144	8-18 x ½" (12.7mm) Hex		001 8111	4	8	12	5/16-18 (7.9mm) Clip Nut
					Head Sheet Screw		001 8114	4	8	12	5/16-18 x ¾" (7.9 x
6	128 3003	8	16	24	Slope Door						19mm) Wing Screw
7	-----	-	-	-	Model Decal		000 8173	4	8	12	5/16" Flatwasher
	128 8801	2	-	-	Decal Infinity Series "320"						
	128 8804	-	2	-	Decal Infinity Series "520"						
	128 8805	-	2	-	Decal Infinity Series "620"						
	128 8806	-	2	-	Decal Infinity Series "720"						
	128 8808	-	-	2	Decal Infinity Series "820"						

UPPER SCREENS



MC 1584

UPPER SCREENS

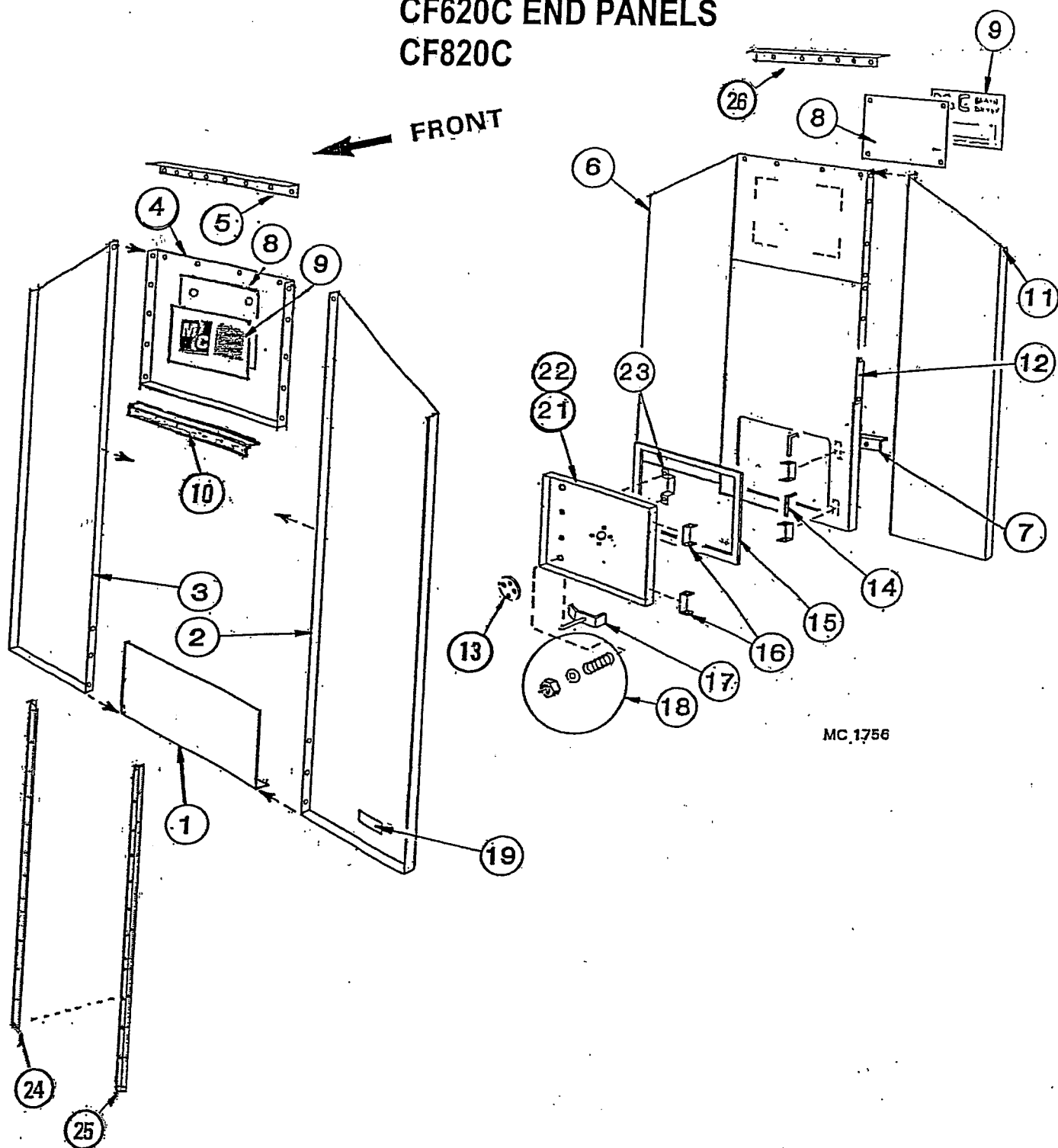
Ref.	Part No.	8 ft. 16 ft. 24 ft. (2.4m) (4.9m) (7.3m)			Description
		Qty.	Qty.	Qty.	
1	----	-	-	-	Outer End Screen w/o Quick Drain
	021 2946	2	2	2	Standard (Galvanized) 3/32" (2.38mm) Holes
	127 2967	2	2	2	Small Seed (Galvanized) 1/16" (1.59mm) Holes
	124 2013	2	2	2	Canola (Galvanized) .050" (1.27mm) Holes
	123 5213	2	2	2	Aluminum 3/32" -.094" Holes
2	129 2832	2	4	6	Hopper Joiner Angle 3/32" (2.38mm) Holes
	124 2014	2	4	6	Hopper Joiner Angle .050" (1.27mm) Holes- Small Seed Screens
3	129 2947	1	2	3	Stiffener Strap
4	021 2950	1	2	3	Hopper Cap
5	128 3075	-	1	2	Seal Angle
6	129 2831	-	1	2	Joiner Plate
7	----	-	-	-	Outer End Screen w/Quick Drain
	128 3002	2	2	2	Standard (Galvanized)
	127 2963	2	2	2	Small Seed (Galvanized)
	124 2012	2	2	2	Canola (Galvanized) .050" (1.27mm) Holes.
	123 5210	2	2	2	Aluminum
8	----	-	-	-	Moisture Control Screen
	021 2947	1	1	1	Standard (Galvanized)
	127 2966	1	1	1	Small Seed (Galvanized)
	124 2013	1	1	1	Canola (Galvanized) .050" (1.27mm) Holes
	123 5214	1	1	1	Aluminum
9	----	-	-	-	Quick Drain Door
	127 2950	8	16	24	Standard (Galvanized)
	127 2974	8	16	24	Small Seed (Galvanized)
	127 2995	8	16	24	Canola (Galvanized) .050" (1.27mm) Holes
	000 8310	8	16	24	5/16 x 3/4" (9.5x19mm) Carriage Bolt-Stainless
	000 8168	8	16	24	5/16 (9.5mm) Flanged Locknut
10	----	-	-	-	Outer Screen w/Quick Drain
	128 3001	6	14	22	Standard (Galvanized)
	127 2965	6	14	22	Small Seed (Galvanized)
	124 2012	6	14	22	Canola (Galvanized) .050" (1.27mm) Holes
	123 5212	6	14	22	Aluminum
11	----	-	-	-	Outer Screen w/o Quick Drain
	021 2945	5	13	21	Standard (Galvanized)
	127 2964	5	13	21	Small Seed (Galvanized)
	124 2013	5	13	21	Canola (Galvanized) .050" (1.27mm) Holes
	123 5211	5	13	21	Aluminum
12	125 2732	4	8	12	Screen Mount Angle
13	----	-	-	-	Inner Screen
	021 2949	16	32	48	Standard (Galvanized) 3/32" (2.38mm) Holes
	127 2968	16	32	48	Small Seed (Galvanized) 1/16" (1.59mm) Holes
	124 2005	16	32	48	Canola (Galvanized) .050" (1.27mm) Holes
14	121 3007	28	60	92	Stiffener Strap
15	128 2663	6	14	22	Inner Brace
16	128 3072	6	14	22	Peak Screen Stiffener
17	021 2600	3	7	11	Inner Cross Tie
18	128 3076	-	2	4	Divider Panel

Hardware to Bolt Screens Together:

Inside:	001 8208	5/16-18 x 1/2" (7.9 x 12.7mm)	Washer Head Hex Bolt
	001 8202	5/16-18 x 3/4" (7.9 x 19.0mm)	Washer Head Hex Bolt
	000 8103	5/16-18 x 1/2" (7.9 x 12.7mm)	Slotted Truss Round Head Bolt
	000 8169	5/16" (7.9mm)	Flanged Whiz Locknut
Outside:	000 8305	5/16-18 x 1/2" (7.9 x 12.7mm)	Washer Head Hex Bolt-Stainless
	000 8308	5/16-18 x 1/2" (7.9 x 12.7mm)	Slotted Truss Round Head Bolt-Stainless
	000 8307	5/16-18 x 3/4" (7.9 x 19.0mm)	Slotted Truss Round Head Bolt-Stainless
	000 8304	5/16" (7.9mm)	Flanged Whiz Locknut-Stainless

CF620C END PANELS CF820C

FRONT



MC 1756

END PANELS - CF620C & CF820C

Ref.	Part No.	Qty.	Description
1	126 2834	1	Panel Below Fan Housing
2	124 2879	1	Left Front Panel
3	124 2878	1	Right Front Panel
4	126 2832	1	Panel Above Fan
5	126 2835	1	End Panel to Hopper Joiner Angle - Front
6	124 2877	1	Right Rear End Panel
7	124 4463	1	Brace-Rear Door Panel
8	128 2999	1	Decal Mount Plate
9	128 8331	2	Large M-C Decal
	128 8805	2	Model Decal Strip "620"
	128 8808	2	Model Decal Strip "820"
10	128 2644	1	Fan Housing Mount Angle
11	124 2876	1	Left Rear End Panel
12	128 2771	1	Rear Door Panel 96" x 37" (244 x 92cm)
13	129 5709	1	Port View Lens
	000 8212	4	1/4-20 x 1/2" (6.35 x 12.7mm) Truss Head Screw
	000 8167	4	1/4"-20 (6.35mm) Flanged Locknut
14	128 5201	2	Hinge Pin
15	128 8900	AR	Rubber Edge Seal/ft.
16	128 2740	4	Door Hinge
	000 8212	8	1/4-20 x 1/2" (6.35 x 12.7mm) Truss Head Screw
	000 8167	8	1/4-20 (6.35mm) Flanged Locknut
17	121 8901	2	Latch and Handle
18	001 8256	2	Spring - 5/8" ID x 2" (15.9 x 51mm)
	000 8174	4	3/8" (9.5mm) Flatwasher
	001 8149	2	3/8" (9.5mm) Hex 2-Way Locknut
19	121 8310	1	"Made in USA" - Decal
20	Blank		
21	128 1183	1	Rear Door Assembly (Incl. ref. 13, 15 thru 18, 22, & 23)
22	128 2957	1	Rear Door Panel Only
23	121 2887	1	Door Handle
	128 8257	2	8-18 x 1/2" (12.7mm) Sheet Metal Screw
24	128 2645	1	Fan Housing Mount Angle - Right
25	128 2646	1	Fan Housing Mount Angle - Left
26	124 2615	1	End Panel to Hopper joiner Angle - Rear

SCR Drive Motor and Gear Box

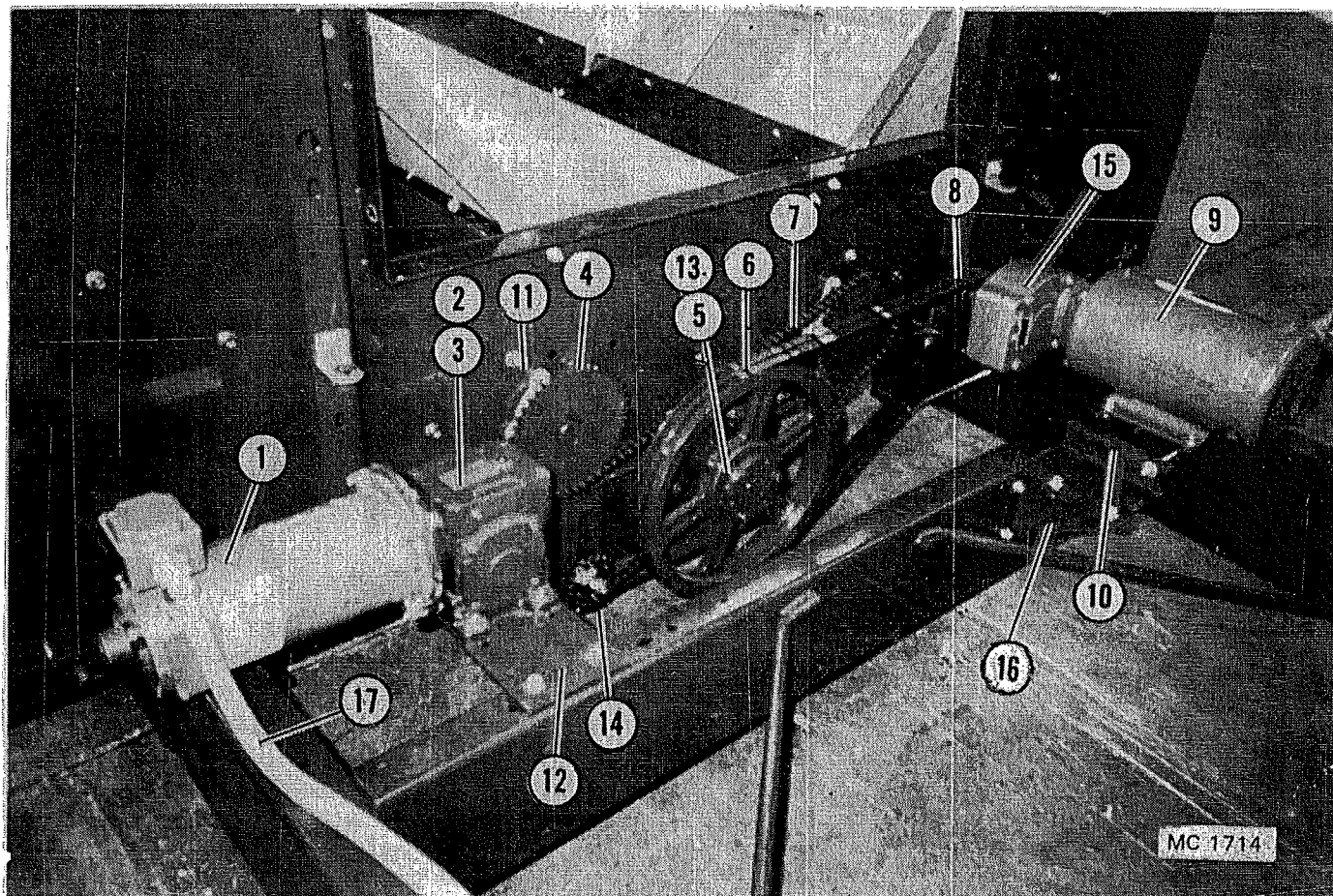


Figure 3

Ref.	Part No.	Qty.	Description	Ref.	Part No.	Qty.	Description
1	1246837	1	DC Motor – 1/3 H.P.	8	1216203	1	Pulley – 2B – 3-3/16" OD –
	1228613	--	DC Motor Brush				7/8" (22.2x80.96mm) Bore
2	1246624	1	SCR Gear Box (Incl. 3/16"		0015112	1	Key – 3/16" x 1 3/8" (4.8x35mm)
			X 1" Key – 0015110)	9	1246627	--	1.5 H.P. 1Ø 230V Motor
	1288947	1	Pint of Mobil SHC 634 Oil		1246626	--	1.5 H.P. 3Ø 230/460V Motor
	0018212	4	3/8 – 16 x 1 1/4" Capscrew-Washer Hd.		1246628	--	1.5 H.P. 3Ø 575V Motor
	0008174	4	3/8" Flatwasher		1281810	1	Motor to Cabinet Wire Assembly
	0008168	4	3/8" Flanged Locknut		0008110	1	5/16 – 18x1 1/2" (7.9x38mm) Capscrew
3	-----	--	SCR Gear Box Sprocket		0018213	3	5/16 – 18x1" (7.9x25.4mm) Capscrew
	1286427	1	RC-40 10Tx3/4" ID – All Models		0008173	4	5/16" (7.9mm) Flatwasher
4	-----	--	Metering Roll Sprocket		0008169	4	5/16 – 18 Flanged Locknut
	1286406	2	RC-40 42Tx 1 1/4" ID – 320/520/620/720	10	1244214	1	Unload Auger Motor Mount
	1286423	2	RC-40 36Tx1 1/4" (31.8mm) ID – 820		0018209	2	3/8 – 16 x 1" Capscrew-Washer Hd.
	0008298	2	Woodruff Key 1/4" x 3/4" (6.35x19mm)		0018210	3	3/8 – 16 x 3/4" Capscrew-Washer Hd.
5	0216201	1	Pulley – 2B x 13.6 SK		0018132	1	3/8 – 16 x 4" (9.5x102mm) "J" Bolt
	0015130	1	Key – 3/8" x 1" (9.5x25.4mm)		0008174	5	3/8" (9.5mm) Flatwasher
6	0216100	1	B – 65 Belts (Matched Set – 2)		0008168	5	3/8 – 16 (9.5mm) Flanged Locknut
7	1286316	1	Chain – RC -40 x 152 Pitch	11	0016016	2	1 1/4" (31.8mm) 3 Bolt Flange Bearing
	0026309	--	Connecting Link	12	1280367	1	SCR Gear Box Mount
					0018210	4	3/8 – 16 x 3/4" Capscrew-Washer Hd.
					0008174	4	3/8" (9.5mm) Flatwasher
					0008168	4	3/8 – 16 (9.5mm) Flanged Locknut

Continued on next page

SCR Drive Motor and Gear Box

Ref.	Part No.	Qty.	Description
13	001 6202	1	SK Bushing - 1-7/16" (36.5mm) I.D. (Incl. capscrews)
14	128 6414	1	Idler Sprocket 18T x 1/2" (12.7mm)
15	124 6620	1	Gear Box - Unload Auger Motor (620/720/820)
16	124 4485	1	Discharge Motor Mount Bracket
17	128	1	SCR Motor to Cabinet Flexible Conduit 3/8" x 43" (9.5mm x 109cm) with 45° Elbow & Straight Connectors
18	128 0370	1	Drive Guard - Wire
	001 3302	2	Angle Clip
	000 8202	4	5/16-16 x 3/4" (7.9 x 19mm) Washer Head Bolt
	000 8173	2	5/16" (7.9mm) Flatwasher
	001 8184	2	5/16" (7.9mm) Clip Nut
	000 8169	2	5/16" (7.9mm) Whiz Locknut
19	121 8957	AR	Rubber Guard Edge
20		1	Unload Auger Motor to Cabinet Flexible Conduit with (2) Straight Connectors 1Ø 3/8" x 40" (9.5mm x 96cm) 3Ø 1/2" x 40" (12.7mm x 96cm)

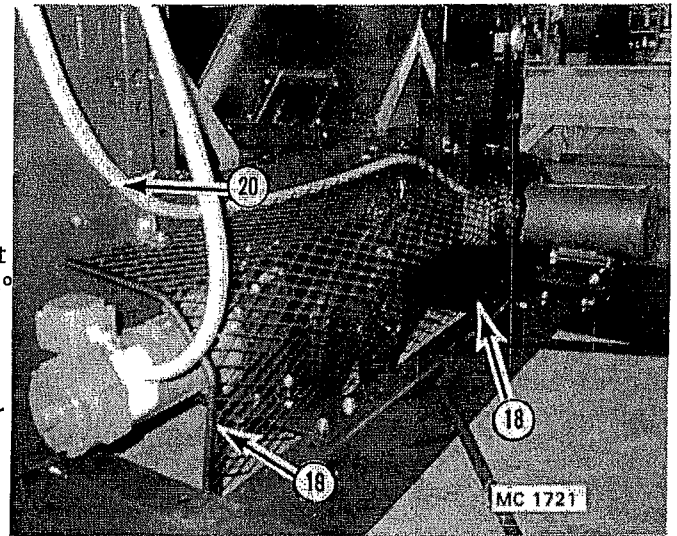
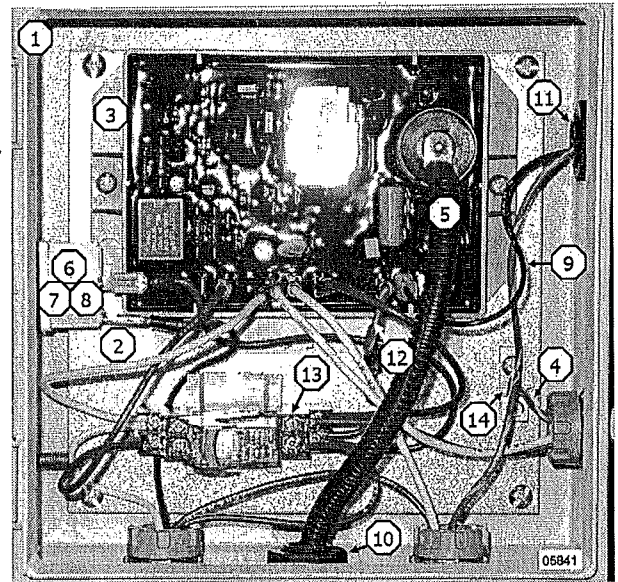


Figure 4

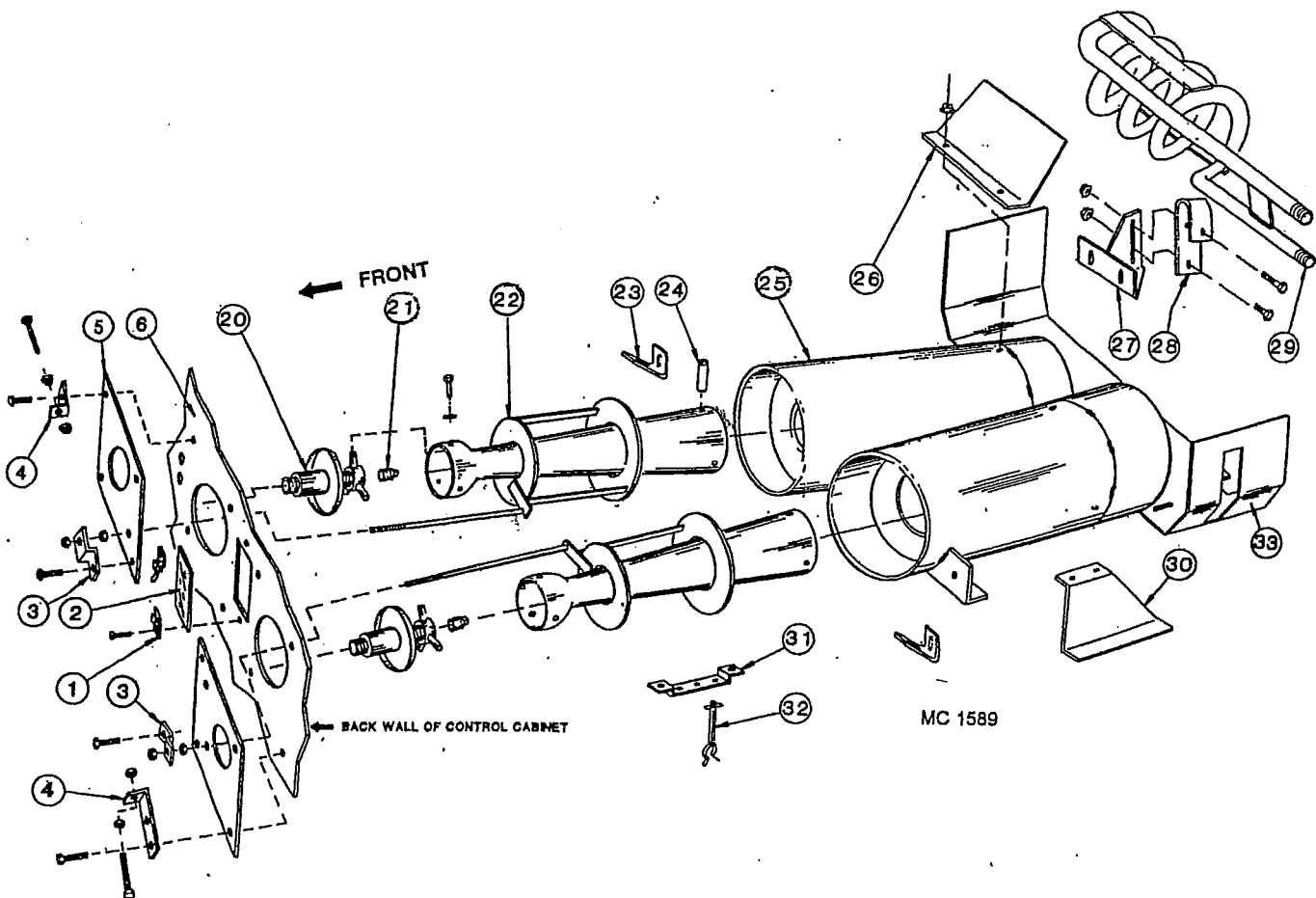
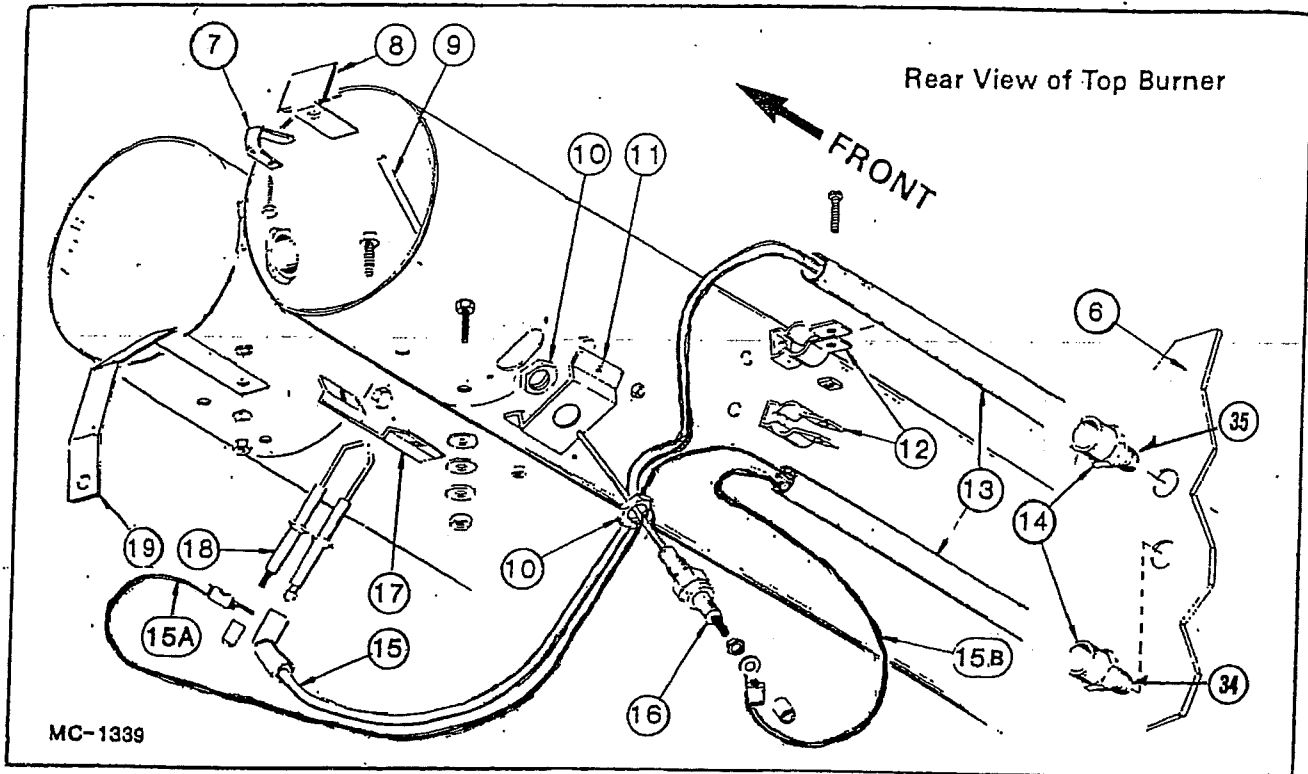
Ignition Board and Box

NOTE: Quantities shown are for one burner.

Ref.	Part No.	Qty.	Description
1	1286994	1	Ignition Box
2	1282938	1	Ignition Board Mount Plate
3	1256965	1	115V Ignition Board with Built in (15) Second Purge Timer
4	1241377	1	Low Voltage Wire Kit Green W/ Yellow Stripe 84" - Electrode
5	1229003	1	High Voltage Wire Kit
6	1256806	1	SPST On-Off Toggle Switch - Sealed
7	1288377	1	Ignition Switch Decal
8	1256807	1	Sealing Ring for 1256806
9	1241079	1	Low Voltage Wire Kit 18 ga. Black 84" - Sensing Probe
10	1216813	1	Feed Through Fitting for (1) High Voltage Wire
11	1216814	1	Feed Through Fitting for (2) Low Voltage Wires Black + Green W/ Yellow Stripe 18 ga.
12		1	Green "B" Ground Wire Green W/ Yellow Stripe
13	1257036	1	Relay - Ignition Board
	1257037	1	Relay Socket
14	1256975	1	Ground Lug (1) Pole



Venturi Burner



VENTURI BURNER

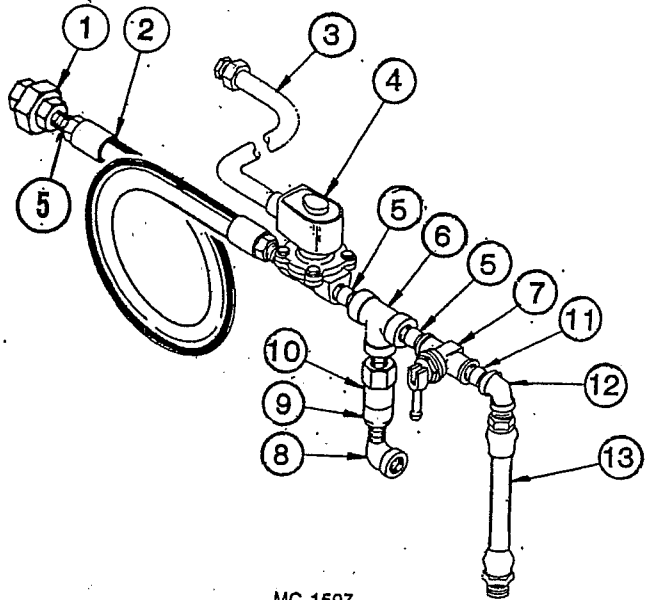
NOTE: Quantities shown are for one burner assembly.

Ref.	Part No.	Qty.	Description
1	128 8969	2	Burner Window Holder Clip
2	128 8968	1	Burner Window
3	128 4515	2	Air Adjuster Bracket
4	128 3371	2	Air Adjuster Clamp Bracket Short (2-15/16")
	128 2008	2	Air Adjuster Clamp Bracket Long (3-9/16")
5	128 4488	2	Hand Hole Cover Plate
6	— — —	—	Back Wall of Control Cabinet
7	127 5201	1	Eddy Mounting Strip
8	127 5200	1	Natural Gas Eddy
9	128 0197	1	Flame Ground Rod
10	121 6915	2	Locknut - 1/2" (12.7mm)
11	128 3007	1	Flame Sensing Probe Bracket
12	121 6906	2	Pipe Clamp
13	128 5742	2	Igniter Line Support Tube
14	127 8063	2	PVC Female Adapter - 1/2" (12.7mm)
15	122 9003	1	Ignition Wire with 90° Boot
15A	124 1377	1	Low Voltage Wire Ass'y Green w/Yellow Stripe (Electrode) 18 ga. 84" (213cm)
15B	124 1079	1	Low Voltage Wire Ass'y Black (Sensing Probe) 18 ga. (213cm)
16	124 6872	1	Flame Sensing Probe
17	128 2962	1	Electrode Mounting Bracket
18	128 6995	1	Style 2 Electrode
19	121 3007	1	Ground Strap
20	128 0108	2	Inlet Throttle
21	127 5700	2	Burner Nozzle-Natural Gas - 3/8" (9.5mm) Orifice
	128 5715	2	Burner Nozzle-LP Gas - 1/4" (6.35mm) Orifice
22	128 0112	2	Venturi Burner
23	128 4260	2	Burner Mounting Strap
24	128 5401	6	Venturi Spacer
25	128 0137	1	Venturi Extension
26	— — —	—	Burner Deflector
	128 5310	1	17 5/8" (44.8cm) for 10HP fan assembly
	128 5308	1	12 3/4" (32.4cm) for 20HP fan assembly
27	128 0141	1	Vaporizer Coil Anchor (LP Gas)
28	128 5306	1	Vaporizer Coil Anchor Clip (LP Gas)
29	128 0140	1	Vaporizer Coil (LP Gas)
30	128 4523	1	Burner Front Support - Right
	128 4524	1	Burner Front Support - Left
31	128 4941	1	Wire Support Bracket
32	128 6989	3	Stand-Off Clip
33	128 5313	1	Burner Shroud
34	121 6814	1	Low Voltage Feed Through (2) Holes
35	121 6815	1	High Voltage Feed Through (1) Hole

LP Gas Liquid Lines

Liquid Control Line

Ref.	Part No.	Description
1	121 8022	½" Extra Heavy Union
2	128 8400	½" ID x 34" Hose w/Couplings
3	128 1820	¾" Flexible Conduit
4	125 7082	½" Solenoid Valve
5	121 8094	¼" x 1½" Extra Heavy Nipple
6	120 8035	½" Extra Heavy Tee
7	121 7015	Hand Valve - ½"
8	121 8048	½" - 90° Standard Street Elbow
9	121 7014	Relief Valve Adapter
10	121 7013	Relief Valve
11	128 8048	½" x 2½" Extra Heavy Nipple
12	121 8036	½" - 90° Extra Heavy Elbow
13	121 7005	Intake Hose Liquid Propane



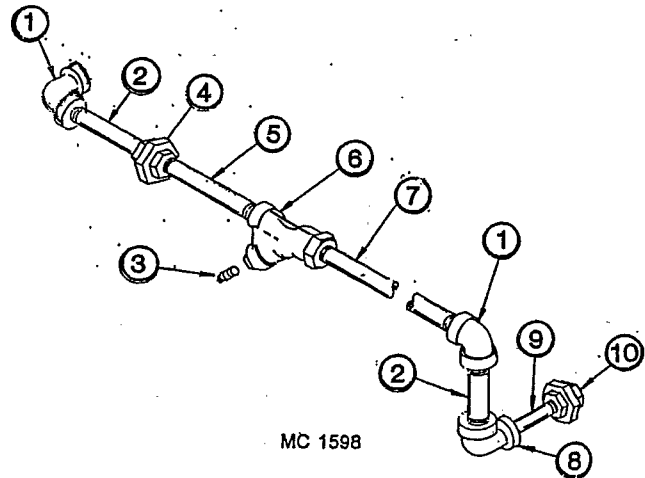
MC 1597

Solenoid Valve Repair Kit

The repair kit and coil for the ½" solenoid valve (ref. 4) is shown on page 19.

Vaporizer to Manifold Pipe

Ref.	Part No.	Description
1	121 8027	¾" - 90° Extra Heavy Elbow
2	121 8006	¾" x 2" Extra Heavy Nipple
3	001 8001	¾" Pipe Plug
4	121 8072	¾" Extra Heavy Union
5	125 8058	¾" x 2½" Extra Heavy Nipple
6	121 8060	¾" Strainer
7	128 5426	¾" x 30½" Extra Heavy Nipple
8	121 8032	¾" to ½" - 90° Extra Heavy Elbow
9	121 8094	½" x 1½" Extra Heavy Nipple
10	121 8022	½" Extra Heavy Union

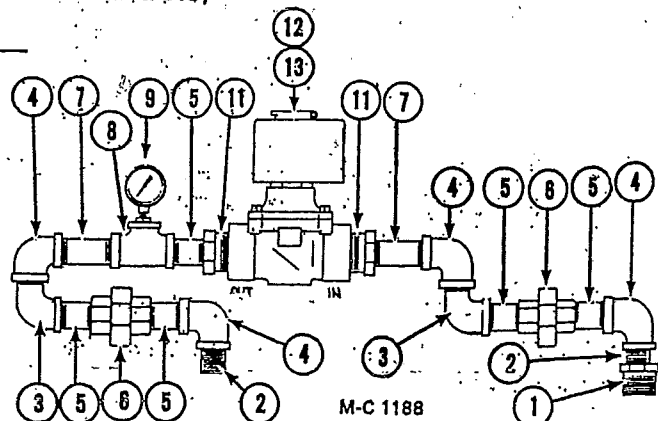


MC 1598

Gas Manifold Low Fire Piping and Solenoid

(Used with Base Section Controls)

Ref.	Part No.	Qty.	Description
2	128 5464	2	¾" (9.5mm) Std. Close Nipple
3	128 5467	2	¾" (9.5mm) Std. Street Elbow - 90°
4	128 5468	4	¾" (9.5mm) Std. Elbow - 90°
5	128 5462	5	¾" x 1½" (9.5x38.1mm) Std. Nipple
6	128 5469	2	¾" (9.5mm) Std. Union
7	128 5463	2	¾" x 2" (9.5x50mm) Std. Nipple
8	128 5466	1	¾" (9.5mm) Std. Tee
9	120 7002	1	Pressure Gauge
11	128 5465	2	¾" x ¾" (19x9.5mm) Reducing Bushing
12	121 7002	1	¾" (19mm) Solenoid Valve
13	122 7035	1	Repair Kit for Ref. 12
	122 7001	1	Coil for Ref. 12



M-C 1188

LP and Natural Gas Manifolds

REPAIR KITS AND PARTS FOR MODULATING VALVES, SOLENOID VALVES AND LP GAS PRESSURE REGULATORS

For Modulating Valves 123 7002 & 123 7024

122 9993 Seat Kit (Incl. stem, disc holder & diaphragm)

122 7006 Diaphragm

For 1 1/4" Solenoid Valve 128 7001

122 7034 Repair Kit (See note)

--- 4607 Coil

For 1/2" Solenoid Valve 125 7082

122 7039 Repair Kit (See note)

122 7001 Coil

NOTE: Kit includes all internal parts that would require replacement in normal service and installation instructions.

For LP Gas Pressure Regulator 128 7005

122 7043 - Diaphragm (Nitrile)

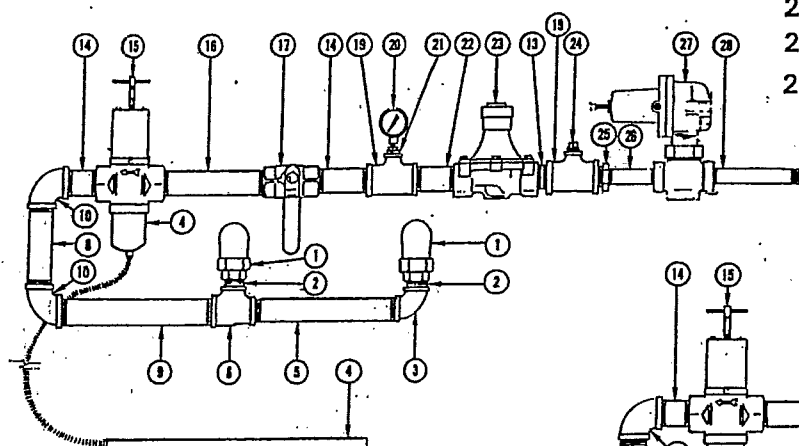
122 7044 - Disc Assembly

122 7045 - Control Spring (Yellow)

122 7046 - Stabilizer

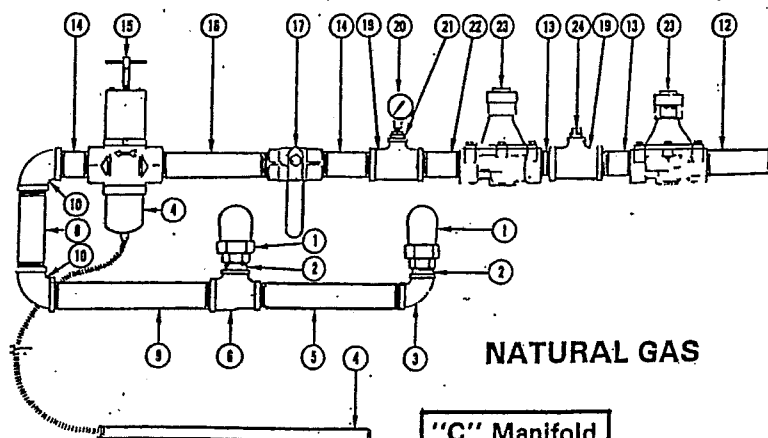
122 7047 - Diaphragm Case O Ring

Ref.	Part No.	Description
1	128 8029	1" Std. Union Elbow-90°
2	128 8013	1" Std. Close Nipple
3	128 8016	1" Std. Elbow - 90°
4	122 7023	Power Element 90°-210°F (15' Capillary) Code "B"
		Optional
	122 7036	Power Element 140°-250°F (15' Capillary) Code "D"
		Standard
5	128 8058	1" x 10 1/2" Std. Nipple
6	128 8007	1 1/4" x 1" x 1" Std. Tee
7	127 8016	1 1/4" x 5 1/2" Std. Nipple
8	123 8046	1 1/4" x 7 1/2" Std. Nipple
9	128 8065	1 1/4" x 11" Std. Nipple
10	123 8051	1 1/4" Std. Elbow - 90°
11	127 8021	1 1/4" x 9 1/2" Std. Nipple
12	123 8073	1 1/4" x 6 1/2" Std. Nipple
13	123 8069	1 1/4" Std. Close Nipple
14	123 8045	1 1/4" x 2 1/2" Std. Nipple
15	123 7024	1 1/4" Modulating Valve w/ 140°- 250°F Power Element
16	129 8033	1 1/4" x 8 1/2" Std. Nipple
17	123 7003	1 1/4" Main Hand Valve
18	128 8024	1 1/4" x 5 Std. Nipple
19	127 8131	1 1/4" x 1 1/4" x 3/8" Std. Tee
20	120 7002	Pressure Gauge
21	127 8132	3/8" to 1/4" Reducing Bushing
22	128 8003	1 1/4" x 3 1/2" Std. Nipple
23	128 7001	1 1/4" Solenoid Valve
24	001 8001	3/8" Pipe Plug
25	123 8078	1 1/4" x 3/4" Std. Reducing Bushing
26	121 8069	3/4" x 3" Std. Nipple
27	128 7005	LP Gas Pressure Reg.
28	121 8091	3/4" X 7" Extra Hvy. Duty Nipple



"C" Manifold

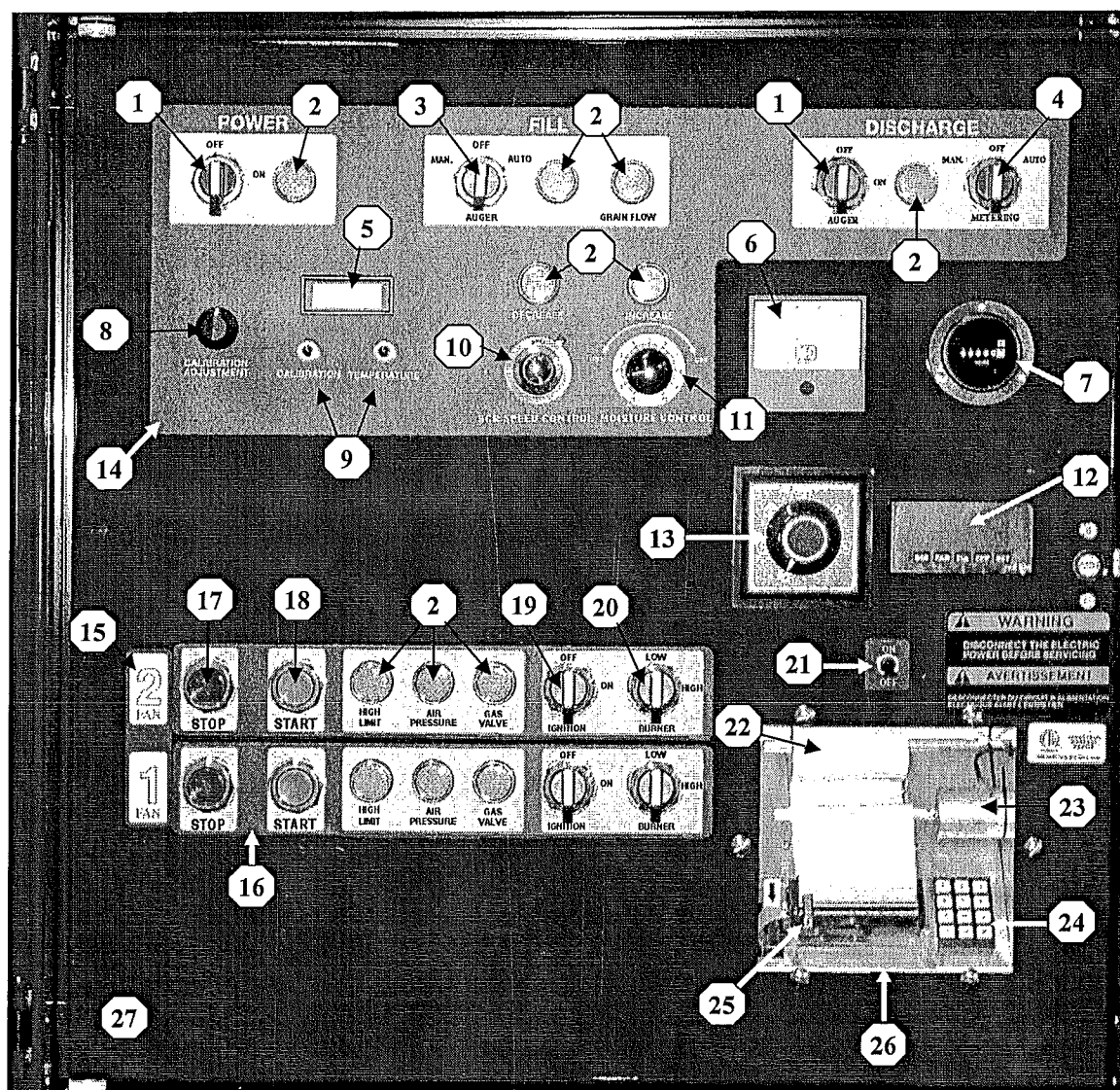
LIQUID PROPANE



NATURAL GAS

"C" Manifold

REMOTE CABINET INSIDE CONTROL PANEL

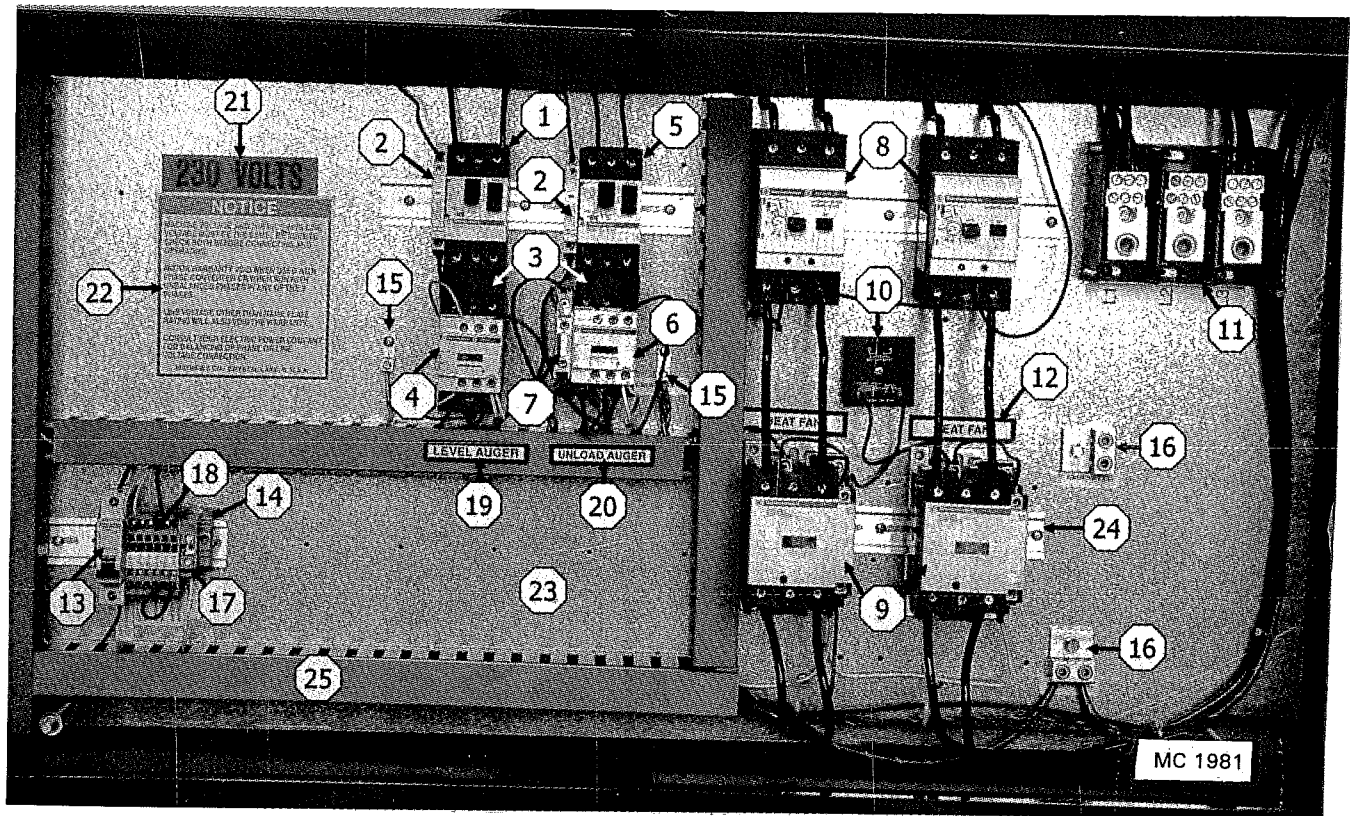


Ref.	Part No.	Qty	Description	Ref.	Part No.	Qty	Description
1	1256809	2	OFF-ON-ON Momentary Contact Switch	1246961	AR		Digital Thermometer Thermocouple 180" (4.6m)
2	1256808	AR	Indicator Light	13	1246959	1	Rotary Selector Switch 5-Way for 1246958
3	1256810	1	Switch ON-OFF-ON (Level Auger)	14	1248303	1	Power Control Bezel
4	1256811	1	Switch ON-OFF-ON (Metering Rolls)	15	1248300	1	Fan & Burner Bezel 1 & 2
5	1227068	1	Digital Display Meter	16	1248304	1	Fan & Burner Control Bezel
6	1246981	1	Discharge Meter	17	1286845	2	Stop Button – Fan
7	444645	1	Hour Meter	18	1286844	2	Start Button – Fan
8	1227069	1	Calibration Potentiometer – Monitor	19	1256812	2	Switch OFF-ON – Ignition
9	1256834	2	Push Button – Calibration and Grain Temperature	20	1256812	2	Switch HIGH-LOW – Burner
10	1241195	1	SCR Drive Potentiometer (10 Turn With Wires) 42" (107cm)	21	1256839	1	Switch ON-OFF – Printer
	1246892	1	Multi Dial with Lock	22	1227061	1	Thermal Paper 3 1/8 " x 246 ft. (7.94cm x 75m)
11	1246955	1	Moisture Control Potentiometer & Wires 60" (153cm)	23		1	Printer Take-Up Assembly
	1246941	1	Dial	24		1	Keyboard, 12 Button
12	1247004	1	Digital Thermometer Read Out Meter	25		1	Printer with Flat Cable
				26	1227074	1	Printer Assembly
				27	1244876	1	2-Fan Inside Control Door (only)

1. Cable
2. Cable
3. Cable
4. Cable
5. Cable
6. Cable
7. Cable
8. Cable
9. Cable
10. Cable
11. Cable
12. Cable
13. Cable
14. Cable
15. Cable
16. Cable
17. Cable
18. Cable
19. Cable
20. Cable
21. Cable
22. Cable
23. Cable
24. Cable
25. Cable
26. Cable
27. Cable
28. Cable
29. Cable

19

MOTOR CONTROL CABINET CF620C w/SPLIT CENTRIFUGAL FANS & (2) 10HP MOTORS 1Ø / 60Hz / 230V



Ref.	Part No.	Qty.	Description
------	----------	------	-------------

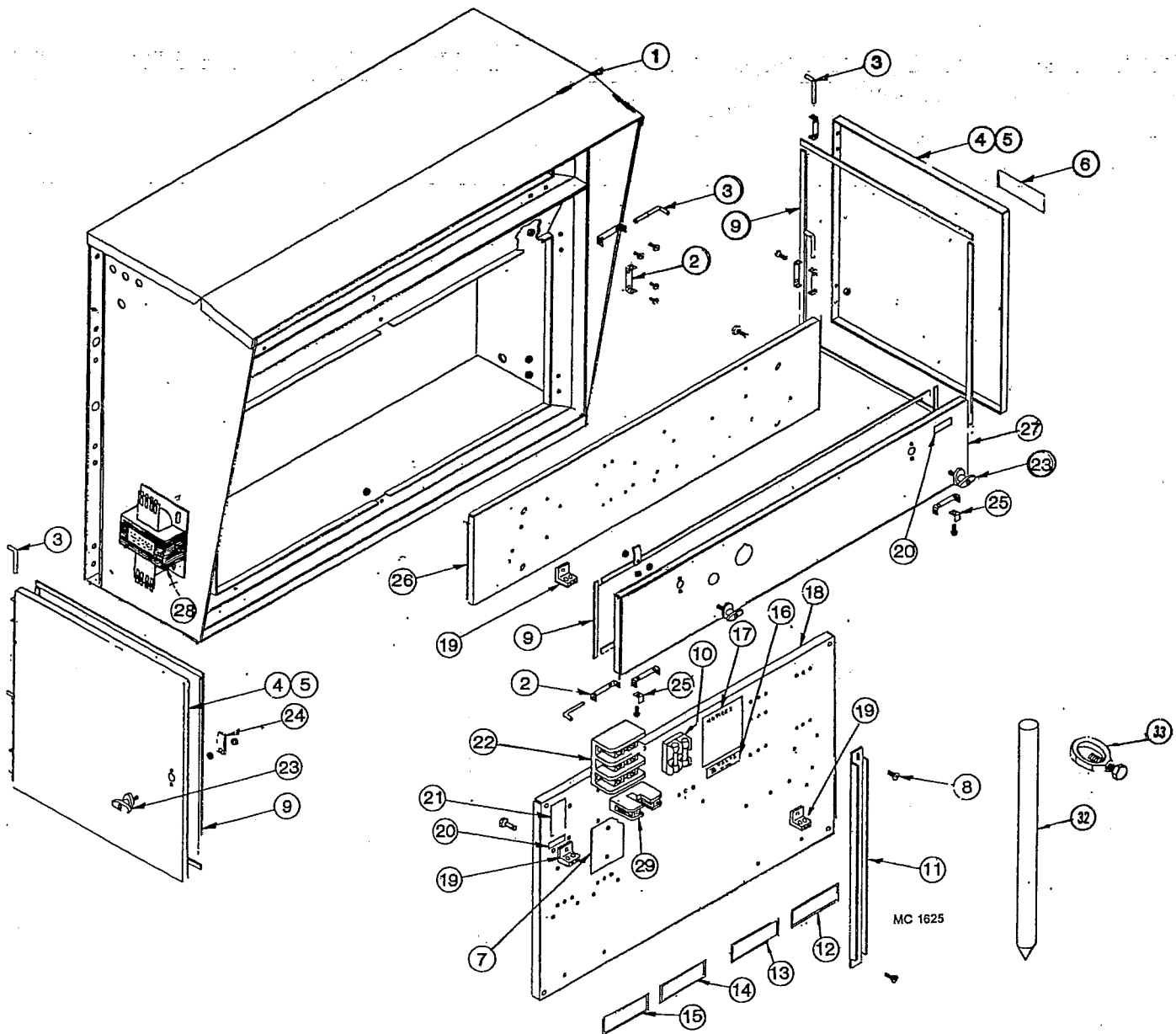
1	123 6960	1	Protector L.A. GV2ME21
2	125 6885	2	Fault L.A. & U.A. GV2AD-0101
3	125 6864	2	Adaptor L.A. & U.A. GV2AF3
4	123 6951	1	Contactor L.A. LC1D25F7
5	123 6958	1	Protector U.A. GV2ME16
6	123 6929	1	Contactor U.A. LC1D18F7
	122 6930		Replacement Coil LXD1G7
7	125 6869	1	Interlock (Auxiliary Contacts) LAD8N20 (N.O.)
8	123 6964	2	Protector Fans 2 GV2ME63
	125 6866	2	Fault Fans GV3A08
9	123 6952	2	Contactor Fans LC1D65F7
	122 6930		Replacement Coil LXD1G7
10	124 6831	1	Delay Relay (10) Seconds
11	128 6957	1	Distribution Splitter Block - 310 Amps
12	121 8313	2	Heat Fan Decal

Ref.	Part No.	Qty.	Description
------	----------	------	-------------

13	125 6988	1	Circuit Breaker 8 Amp (1) Pole 115V
14	490 6833	2	End Retainers
15	125 6975	1	Ground Lug (1) Pole
16	125 6918	1	Ground Lug (2) Pole
17	125 7020	1	Neutral Terminal Block (Screw Type)
	125 7021	1	End Plate for 125 7020
18	125 7005	6	Terminal Block, Spring 2 wire 6mm
	125 7006	1	Terminal End Plate Single 6mm
	125 7012	6	Terminal Marker Strip
19	121 8351	1	Level Auger Decal
20	128 8335	1	Unload Auger Decal
21	123 8336	1	230 Volts Decal
22	121 8315	1	Notice - Warranty Decal
23	124 4492	1	Component Mounting Panel
24	490 6831	AR	Din Rail
25	128 6905	AR	Wire Raceway Track

This image shows a single sheet of white paper with horizontal ruling lines. The lines are evenly spaced and run across the width of the page. There are no margins, text, or other markings on the paper.

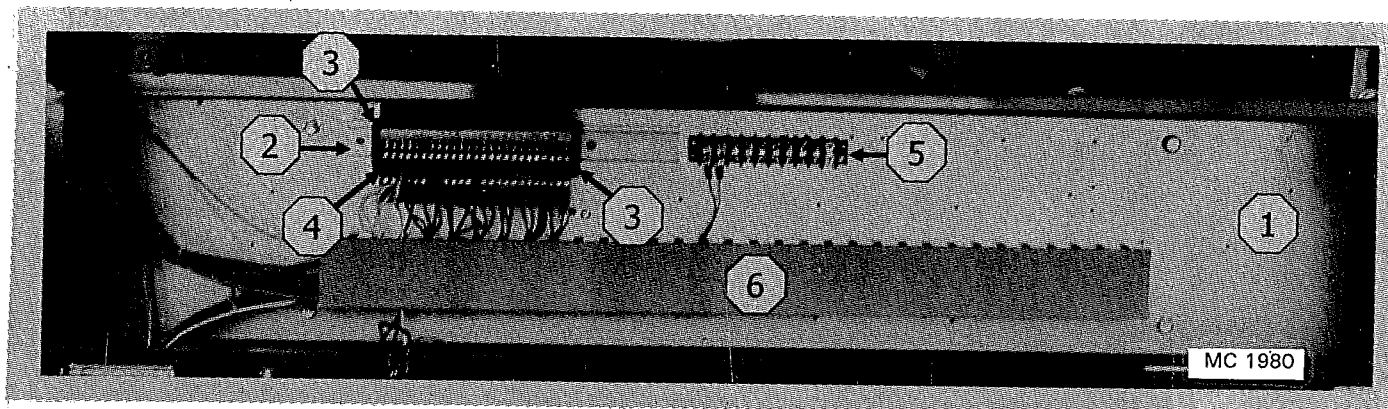
Base Section Control Cabinet



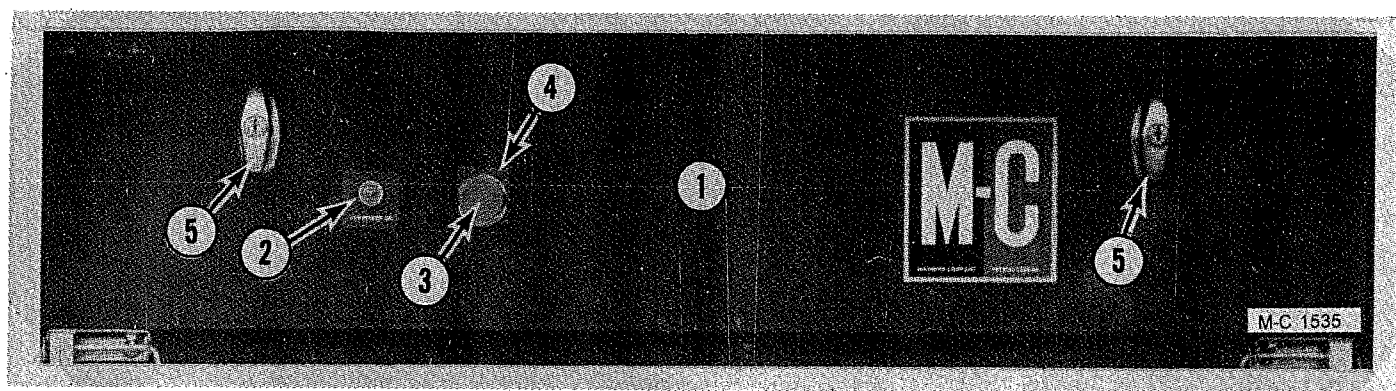
Base Section Control Cabinet

Ref.	Part No.	Qty.	Description
1	128 0306	1	Motor Control Cabinet Weldment
2	128 2740	12	Door Hinge
3	128 5201	6	Hinge Pin
4	128 1329	2	Door Assembly - Left & Right (include ref. 2, 5 & 9)
5	128 4844	2	Door - Left & Right
6	121 8316	1	Dryer Warning Decal
7	128 5789	2	Insulator Sheet (460 & 575V)
8	000 8103	2	5/16-18 x 1/2" Truss Head Screw
	000 8169	2	5/16-18 Flanged Locknut
9	121 8966	-	Weather Stripping 1/4" x 3/4" (specify feet required)
10	121 6988	2	Fuse Holder - 380, 415, 460 & 575V
	124 6870	2	FRS - 7 Amp Fuse (380V)
	124 6829	2	FRS - 4 Amp Fuse (415V)
11	128 4843	1	Door Jamb
12	121 8312	1	Heat Fan Decal (EM&EMS)
13	121 8312	1	Heat Fan Decal (EMS only)
14	128 8335	1	Unload Auger Decal
15	121 8351	1	Level Auger Decal
16	123 8339	1	208 Volts Decal
	123 8336	1	230 Volts Decal
	123 8337	1	460 Volts Decal
	123 8338	1	575 Volts Decal
17	121 8315	1	Notice, Warranty Decal
18	124 4448	1	Component Mounting Panel
19	125 6918	2	Grounding Lug
20	128 8349	2	Ground Decal
21	128 8318	1	Splitter Block Voltage Decal
22	128 6957	1	Splitter Block - 1 & 3 Phase
23	124 1021	4	Door "T" Handle Assembly (incl. ref. 24 cam, keys and mounting hardware). Lever type handle no longer available.
	128 8946	4	Door "T" Handle w/Keys (less ref. 24 cam)
	122 8900	4	Door "T" Handle Key
24	128 3425	4	Door Latch Cam
25	128 2741	2	Stop Bracket
26	124 4771	1	Component Mounting Board
27	124 4864	1	Control Door
	124 1021	2	Door "T" Handle Assembly
28	127 6829	1	Transformer (750VA) 460/575V
	123 6902	1	Transformer (1000VA) 380/415V
29	127 6823	1	Neutral Lug
30	124 2855	1	Hour Meter Bracket (not shown)
31	444 645	1	Hour Meter (not shown)
32	124 6980	1	Grounding Rod 9/16" dia. x 8 ft. (14.3mm x 2.4m)
33	124 6979	1	Grounding Rod Ring

Electrical Components in 115V Base Section Control Cabinet

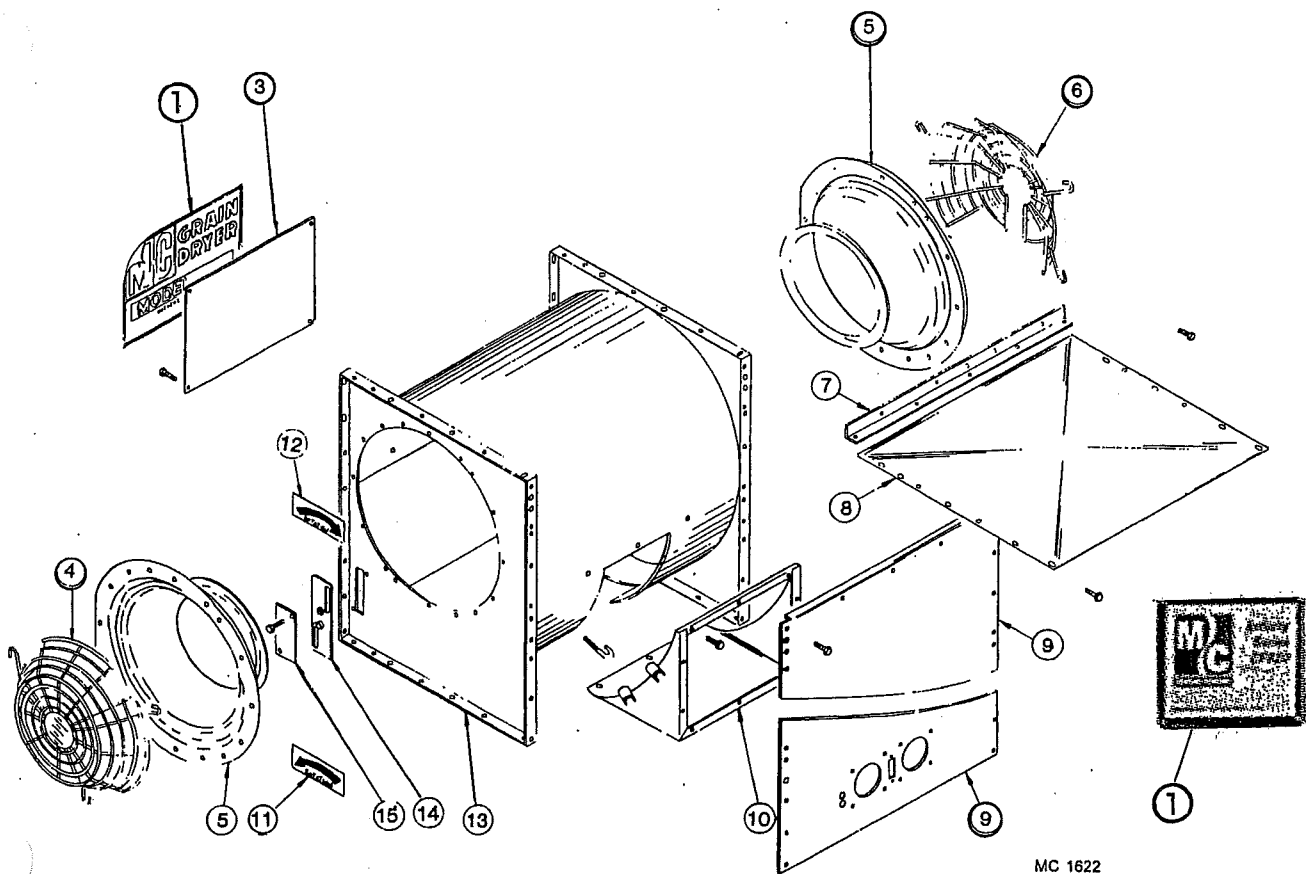


Ref.	Part No.	Qty.	Description
1	124 4771	1	Component Mounting Board
2	490 6831	AR	Din Rail
3	490 6833	2	End Retainers
4	125 7005	25	Terminal Block Spring 2 Wire 6mm.
	125 7006	1	Terminal End Plate Single 6mm.
	125 7012	25	Terminal Marker Strip
5	124 6970	1	Terminal Block (Digital Thermometer)
6	128 6905	AR	Wire Raceway Track



Ref.	Part No.	Description
1	124 4864	Control Door
2	121 6860	125V Indicator Lamp Assembly
3	124 6967	Safety Shut-Off Palm Switch
4	128 8379	"Stop" Legend Plate
5	124 1021	Door "T" Handle Assembly

Fan Housing



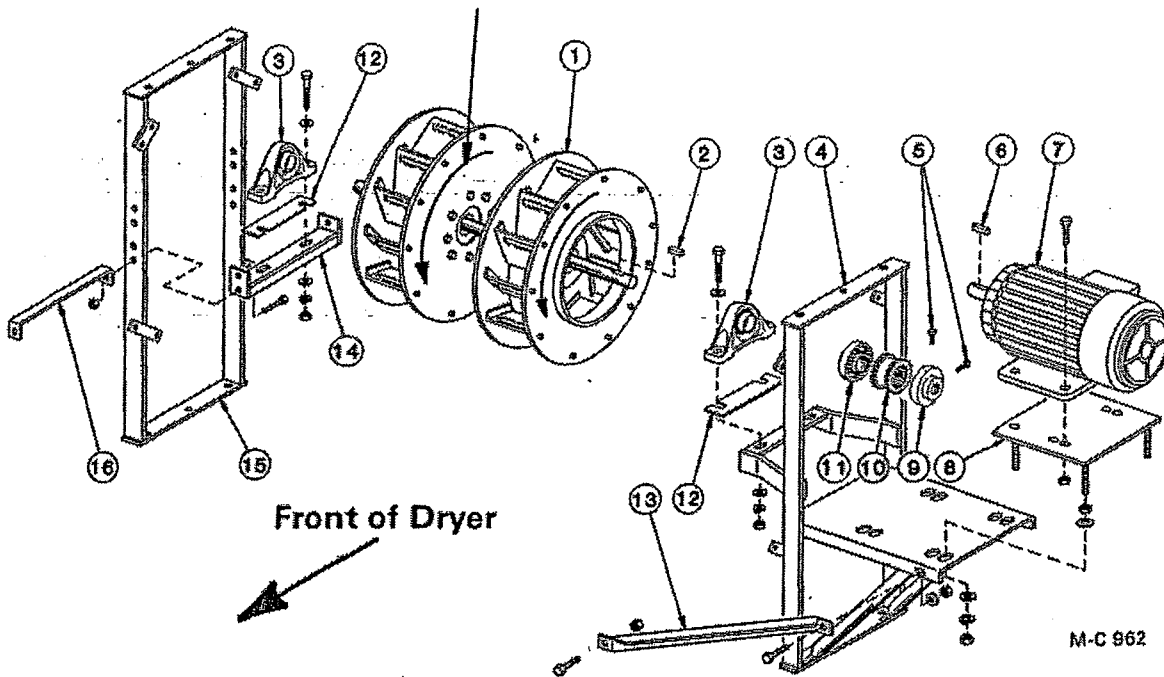
MC 1622

Ref.	Part No.	Qty.	Description
1	----	-	Dryer Model Decal
	128 8311	2	Model "620"
	128 8318	2	Model "820"
3	128 2999		Decal Mount Plate (at rear of dryer)
4	128 8964	1	Full Fan Guard Wire
5	128 5724	2	Air Intake Spinning
	001 8202	9	5/16-18 x 3/4" Hex Washer Head Bolt
	000 8109	9	5/16-18 x 1 1/4" Capscrew
	000 8173	9	5/16" Flatwasher
	000 8169	18	5/16-18 Flanged Locknut

Ref.	Part No.	Qty.	Description
6	128 8965	1	3/4 Fan Guard
7	128 2757	1	Fan Housing Support
8	124 4834	1	Fan Housing Top Cover
9	128 0302	1	Front Panel
10	128 0142	1	Burner Transition
	120 8130	4	3/8-16 x 2" "J" Bolt
	001 8210	3	3/8-16 x 3/4" Hex Bolt
	000 8168	7	3/8-16 Flanged Locknut
11	121 8301	1	Counterclockwise Arrow Decal (motor side of fan housing)
12	128 8322	1	Clockwise Arrow Decal
13	128 0127	1	Centrifugal Fan Housing
14	128 0086	1	Vaporizer Mount Plate (LP)
15	128 4940	1	Vaporizer Hole Cover (Nat.Gas)

Fans and Fan Drive (Model CF620C & CF820C EM & EMS)

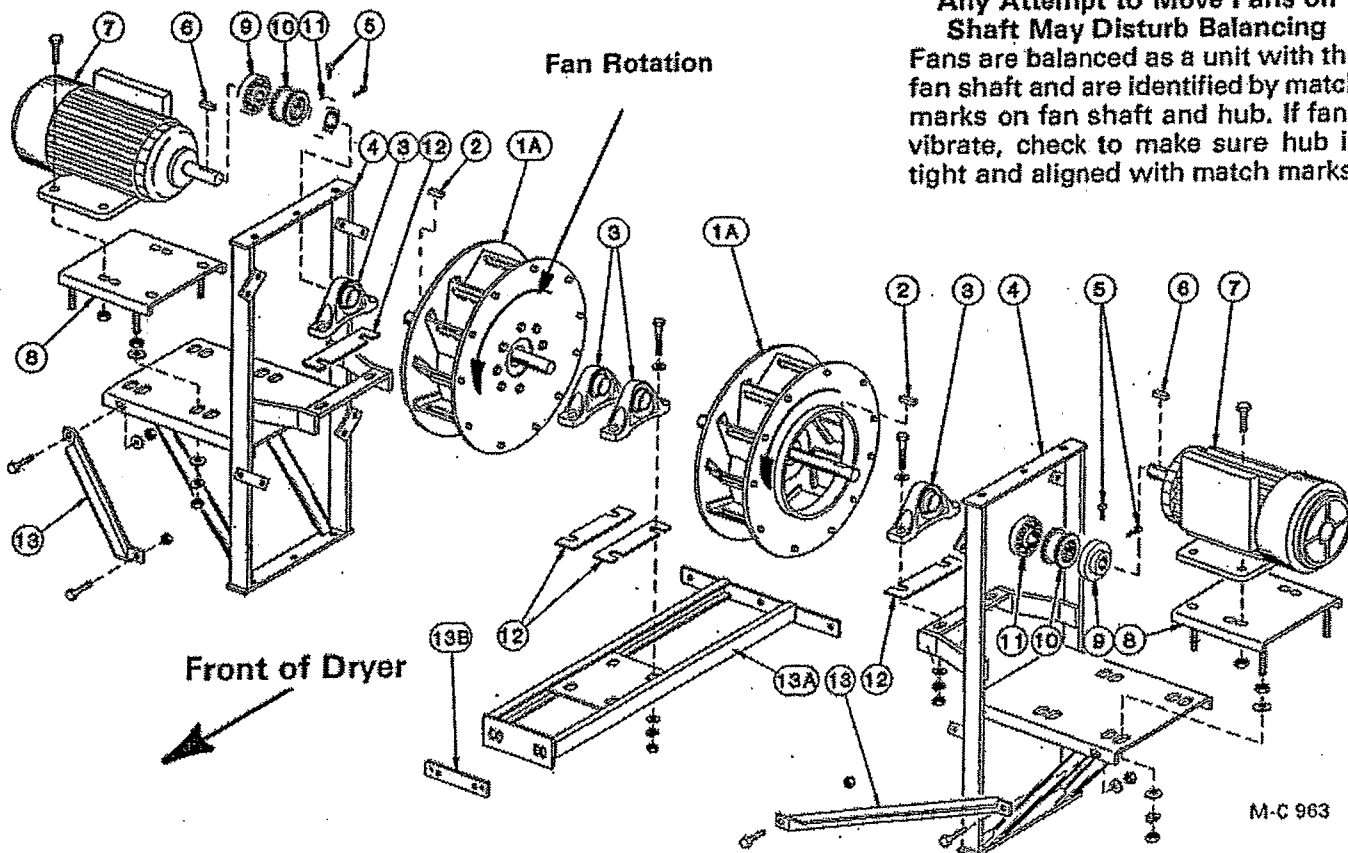
Fan Rotation



All three phase (EM Models)

CAUTION

Any Attempt to Move Fans on
Shaft May Disturb Balancing
Fans are balanced as a unit with the
fan shaft and are identified by match
marks on fan shaft and hub. If fans
vibrate, check to make sure hub is
tight and aligned with match marks.



All single phase (EMS Models)

Fans and Fan Drive

(Models CF620C & CF820C EM & EMS)

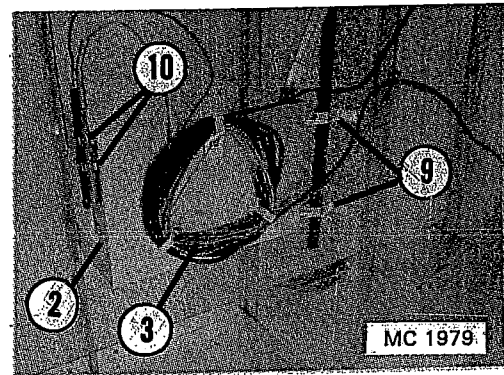
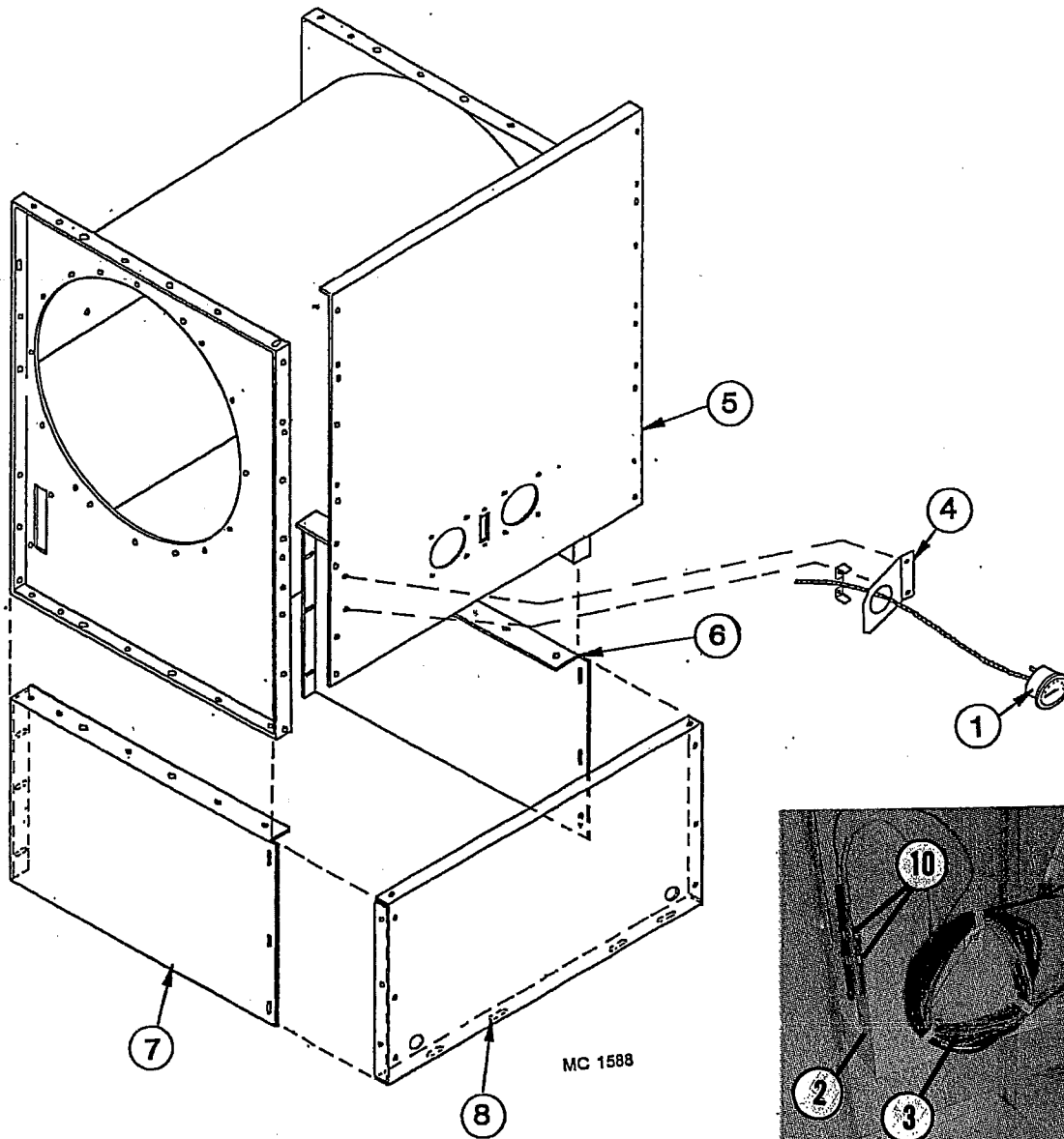
Ref.	Part No.	Qty.	Description	Ref.	Part No.	Qty.	Description
1	-----	-	Fan Ass'y - EM Models	9	128 6623	-	8-S Flange-1 $\frac{3}{8}$ " (34.9mm.) Bore 10HP Motor
	128 1266	1	20HP Upper (2 - 10HP fan wheels)		128 6604	-	8-S Flange - 1 $\frac{5}{8}$ " (41.3mm.) Bore 15 & 20HP Motors
	128 1315	1	30HP Upper (2 - 15HP fan wheels)		128 6613	-	9-S Flange - 1 $\frac{7}{8}$ " Bore 30 HP Motor
1A	-----	-	Fan Ass'y - EMS Models	10	128 6606	-	Sleeve - Sureflex 8JE 10, 15 & 20HP Motors
	128 1731	1	10HP Upper Left - 620C (1 - 10HP fan wheel)		128 6609	-	Sleeve - Sureflex 9E 30HP Motor
	128 1732	1	10HP Upper Right - 620C (1 - 10HP fan wheel)	11	128 6622	-	8-S Flange - 2-3/16" (55.6mm.) Bore 10, 15 & 20HP Motors
		1	15HP Upper Right - 820C (1 - 15HP fan wheel)		128 6620	-	9-S Flange - 2-3/16" Bore 30HP Motor
		1	15HP Upper Left - 820C (1 - 15HP fan wheel)	12	128 2849	AR	Bearing Shim - 16 gauge (1.59mm.)
2	001 5150	-	Key- $\frac{1}{2}$ "x $\frac{3}{8}$ "x2 (12.7x9.5x51mm.)		128 2649	AR	Bearing Shim - 11 gauge (3.16mm.)
3	128 6022	-	Pillow Block Bearing 2-3/16" (55.6mm.) Bore	13	124 4213	-	Motor Mount Brace
	000 8268	2	$\frac{5}{8}$ -11x3" (15.9x76.2mm.) Capscrew #5		000 8121	2	$\frac{3}{8}$ -16x1" Capscrew
	000 8299	2	$\frac{5}{8}$ " SAE Flatwasher		000 8168	2	$\frac{3}{8}$ -16 Flanged Locknut
	000 8181	2	$\frac{5}{8}$ " Lockwasher	13A	128 0249	-	Inner Bearing Support
	000 8164	2	$\frac{5}{8}$ -11 Hex Nut		000 8269	5	$\frac{3}{8}$ -16x1 $\frac{1}{4}$ " Capscrew
4	128 0138	-	Motor Support		000 8168	5	$\frac{3}{8}$ -16 Flanged Locknut
	000 8121	8	$\frac{3}{8}$ -16x1" Capscrew	13B	128 2671	AR	Inner Bearing Support Shim
	000 8168	8	$\frac{3}{8}$ -16 Flanged Locknut	14	128 0098	-	Bearing Support
5	128 8130	-	$\frac{3}{8}$ -16x1" (9.5x25.4mm.) Square Head Cup Pt. Set Screw		000 8138	3	$\frac{1}{2}$ -13x1 $\frac{1}{2}$ " (12.7x38mm.) Capscrew
6	001 5124	-	Key-5/16x2 $\frac{3}{8}$ " (6.35x60.3mm.) 10HP Motor		000 8139	1	$\frac{1}{2}$ -13x1 $\frac{1}{4}$ " (12.7x44.5mm) Capscrew
	001 5139	-	Key- $\frac{3}{8}$ x3" (9.5x76.2mm.) 15 & 20HP Motor		000 8170	4	$\frac{1}{2}$ -13 Flanged Locknut
	001 5155	-	Key- $\frac{1}{2}$ x3 $\frac{1}{4}$ " (30HP Motor)	15	128 0091	-	Fan Bearing Support
7	-----	-	Fan Motor (See page)		000 8121	8	$\frac{3}{8}$ -16x1" Capscrew
	000 8293	4	$\frac{3}{8}$ -16x1 $\frac{1}{2}$ " Capscrew - Full Thread (10HP motors)		000 8168	8	$\frac{3}{8}$ -16 Flanged Locknut
	000 8168	4	$\frac{3}{8}$ -16 Flanged Locknut		000 8135	4	$\frac{1}{2}$ -13x1" (12.7x25.4mm.) Capscrew #5
	000 8139	4	$\frac{1}{2}$ -13x1 $\frac{1}{4}$ " Capscrew (15, 20, & 30HP Motors)		000 8170	4	$\frac{1}{2}$ -13 Flanged Locknut
	000 8170	4	$\frac{1}{2}$ -13 Flanged Locknut	16	128 3452	-	Bearing Mount Stiffener
8	128 0167	-	Motor Mount (10HP Motors)		000 8121	1	$\frac{3}{8}$ -16x1" Capscrew
	121 0343	-	Motor Mount (15 & 20HP Motors)		000 8168	1	$\frac{3}{8}$ -16 Flanged Locknut
	128 0090	-	Motor Mount (30HP Motor)		000 8139	1	$\frac{1}{2}$ -13x1 $\frac{1}{4}$ " (12.7x44.5mm.) Capscrew
	000 8165	8	$\frac{3}{4}$ -10 (19.05mm.) Hex Nut		000 8170	1	$\frac{1}{2}$ -13 Flanged Locknut
	000 8177	8	$\frac{3}{4}$ " Flatwasher				
	000 8182	4	$\frac{3}{4}$ " Lockwasher				

NOTE: Fan assembly HP can be determined by measuring the width of the fan wheels.

A. 5 $\frac{1}{4}$ " fan wheels - 10HP (two fan wheels - 20HP) CF620C

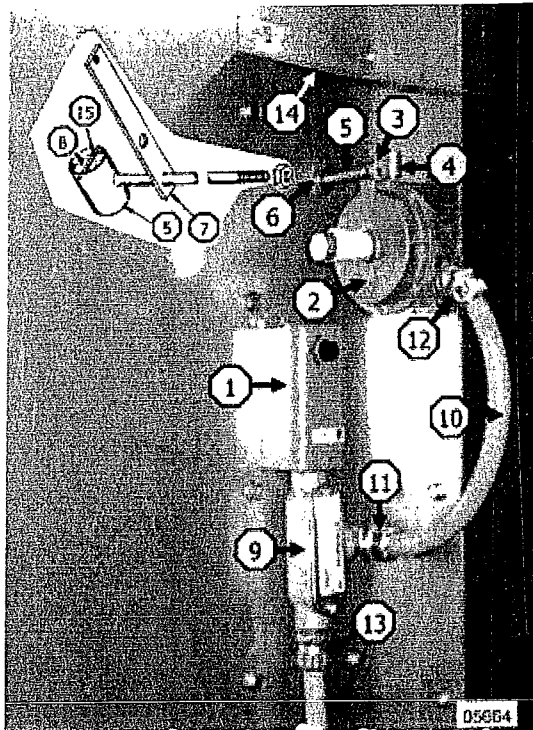
B. 7-15/16" fan wheel - 15HP (two fan wheels - 30HP) CF820C

Fan Housing Supports



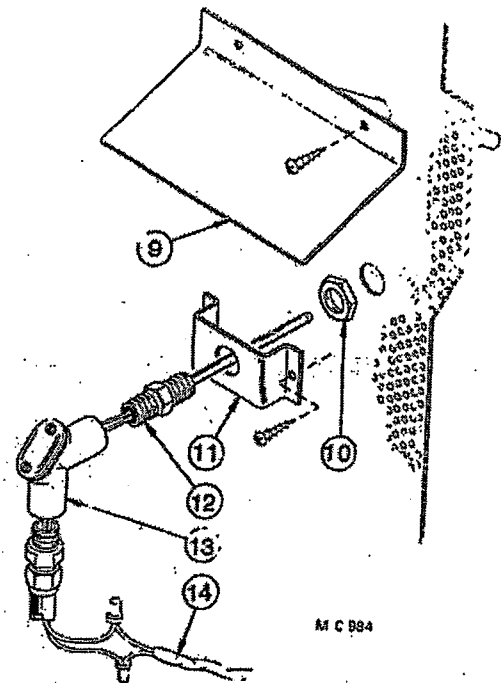
Ref.	Part No.	Qty.	Description
1	128 8983	—	Thermometer - 15 ft. (4.6m) Capillary (Mounting Bracket included)
2	124 2949	1	Sensing Bulb Bracket
3	124 8325	3	Capillary Tube Holder
4	124 4824	1	Thermometer Mount Plate (Single)
5	128 0302	1	Front Panel
6	124 4460	1	Fan Housing Support - Right
7	124 4459	1	Fan Housing Support - Left
8	124 4464	1	Fan Housing Support Panel
9	120 6949	2	Mod Valve Sensing Bulb Bracket
10	120 6950	4	Thermocouple and High Limit Bulb Bracket

Moisture Control, Sensor, Air Pressure and High Limit Switches



Air Pressure and High Limit Switches

Ref.	Part No.	Qty.	Description
1	125 6967	1	High Limit Switch - 8 ft. (2.5m) Capillary - Adjustable - Manual Reset
2	125 6994	1	Air Pressure Switch
3	121 6007	1	90° Elbow 1/4" (6.35mm) F - 1/4" (3.2mm) M - Brass
4	125 8045	1	1/8" (31.8mm) Pipe Plug - Brass
5	121 0169	1	Air Pressure Tube
6	121 8000	2	1/4" (6.35mm) Pipe Locknut
7	121 2007	1	Air Pressure Tube Bracket
8	121 5716	1	Air Pressure Tube Filter
9	121 6883	1	1/2" (12.7mm) Conduit Tee
10	124 6821	AR	3/8" (9.5mm) Liqueatite
11	124 6824	1	90° Elbow
12	124 6823	1	45° Elbow
13	124 6822	1	Straight Liqueatite Connector
14	121 2946	1	High Limit/Air Switch Cover
15		2	Filter Retainer (Wire)

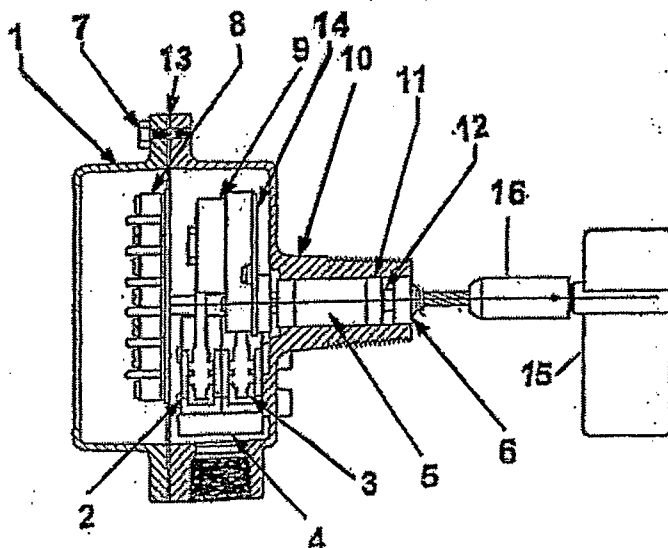


Moisture Control Sensor

Moisture Control Probe (Sensor)

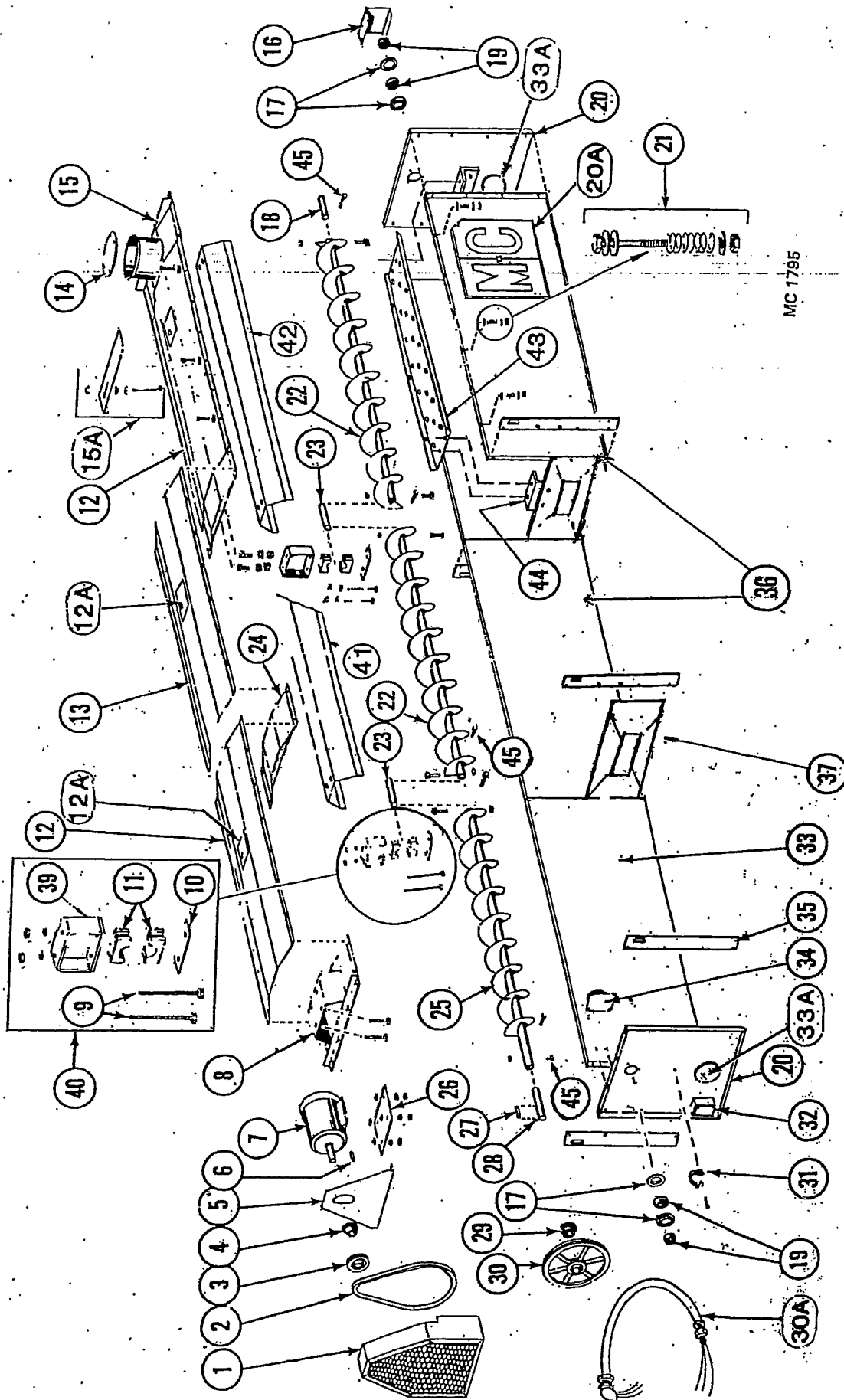
Ref.	Part No.	Description
9	121 0031	Thermistor Shield
10	121 6915	Locknut - 1/2" (12.7mm)
11	128 3007	Bracket
12	124 6893	Thermistor (Sensing Probe)
13	123 8089	1/2" (12.7mm) Handy Ell
14	125 6908	18/2 PVC Cord w/Shield

LEVEL SWITCH ASSEMBLY 1291051



Ref.	Part No.	Qty.	Description
1	220 0056	1	Aluminum Enclosure
2	530 0076	1	Micro Switch Ass'y (Limit)
3	530 0052	1	Micro Switch Ass'y (Motor)
4	338 0008	1	Switch Shroud Insulator
5	416 0033	1	Drive Shaft Assembly
6	280 0055	1	Shaft Seal
7	110 0048	1	Screw 1/4" (6.35mm) Hex Head
8	416 0035	1	Terminal Board Assembly
9	350 0039	1	Motor 120 VAC 50/60 Hz
10	220 0055	1	Aluminum Enclosure (Shaft End)
11	200 1004	1	Ball Bearing
12	165 0002	1	Bearing Retaining Ring
13	280 0018	1	Gasket Rotary Cover
14	416 0078	1	Motor Plate Assembly
15	475 227	1	Paddle GRP-2
16	475 228	1	Shaft Coupler GRSS-1
	475 231	1	Switch Mount Plate (Not Shown)

Hopper and Level Auger

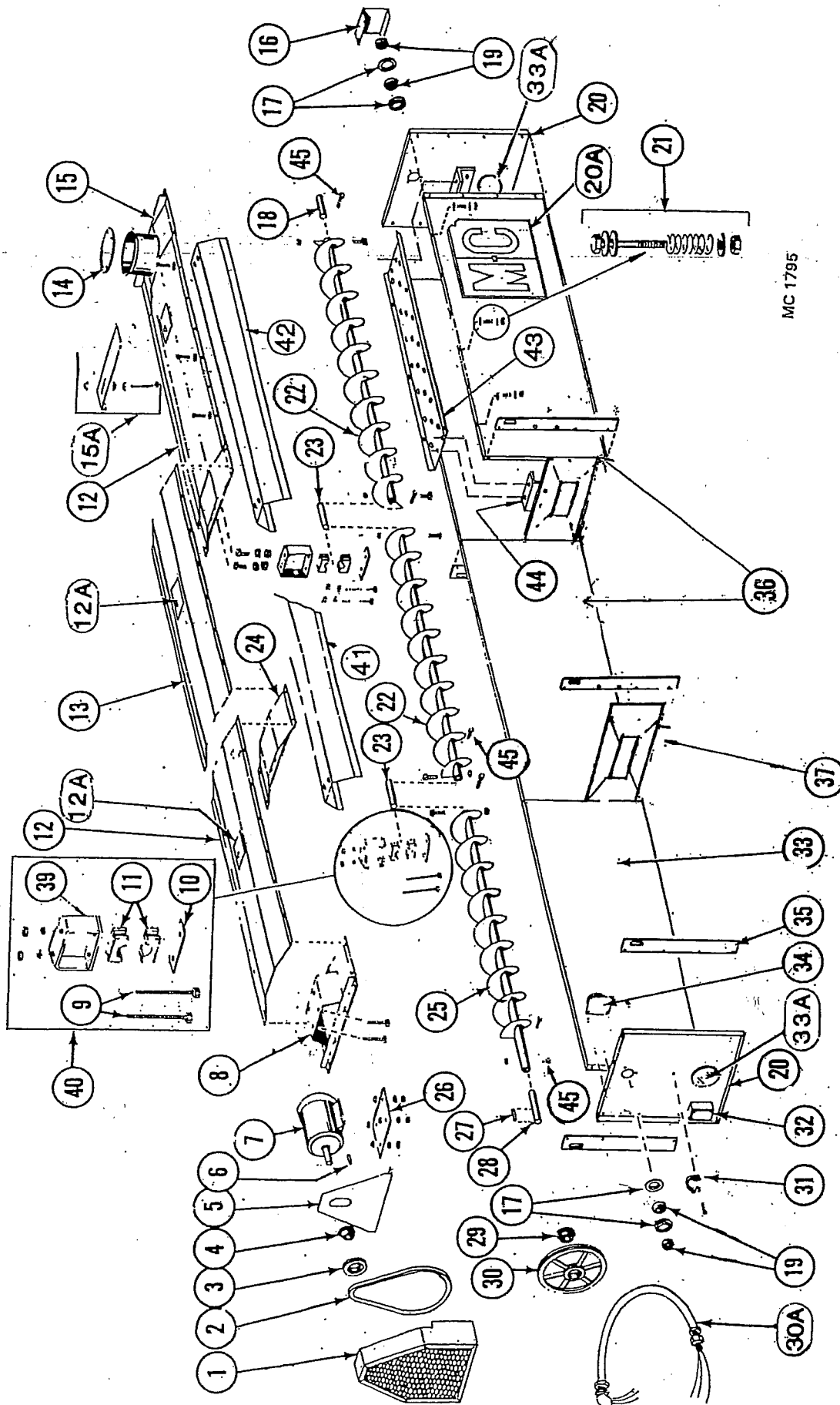


Hopper and Level Auger

16 ft. 24 ft. (4.9m) (7.3m)				16 ft. 24 ft. (4.9m) (7.3m)			
Ref.	Part No.	Qty.	Description	Ref.	Part No.	Qty.	Description
1	129 1050	1	Level Auger Guard C.E.	12	129 2945	2	Hopper Cover - Front & Rear 76" 193cm)
2	128 6103	1	2/3V/710 (banded belt) or 128 6104 in matched set of two	12A	128 8355	2	Warning Decal
3	128 6207	1	3V/3.65 x 2 Groove Pulley 60 Cycle	13	129 2946	-	Hopper Cover - Center 83" (211cm)
	128 6220	1	3V/4.5 X 2 Groove Pulley 50 Cycle				
4	128 6214	1	1 1/8" (28.6mm) SH Bushing for 3HP & 5HP motor (Incl. capscrews & lockwashers)	14	129 4204	1	Receiving Tube Cover
5	129 4944	1	Level Auger Guard Back	15	129 0002	1	Receiving Hopper
6	001 5119	1	Key - 1/4"x1/4"x2" (6.35x6.35x51mm) 3HP & 5HP motors	15A	129 4205	1	Flow Restrictor
					129 5703	1	Position & Locking Bolt
7	128 6818	1	- 3HP 30 Motor 230/380/460V - 520/620/720		000 8168	3	3/16 Flanged Locknut
				16	129 4947	1	Stub Guard
	128 6815	-	5HP 30 Motor 230/380/460V - 820	17	001 6004	4	Bearing Flangette 1 1/4" (31.75mm)
	128 6829	1	3HP 10 Motor 230V - 520/620/720/820	18	128 5052	1	Level Auger Rear Shaft 1 1/4" x 8" (31.75 x 203mm)
8	129 0001	1	Level Auger Motor Mount	19	001 6003	2	Bearing w/Lock Collar 1 1/4" (31.75mm)
9	001 8287	2	3/8"-16 x 3 3/4" (9.5 x 95.2mm) Capscrew - Grade 5	20	129 2848	2	Hopper End Panel - Front & Rear w/View Lens
				20A	121 8343	2	M-C Decal 26 1/2" x 23" (67x58.4cm)
	000 8162	4	3/16 Hex Nut	21	000 8101	12	1/4-20x2" (6.35x51mm) Capscrew
10	128 3415	1	Bearing Hanger Bar		131 8718	12	Spring 5/8" OD x 1 3/4" (15.9 x 44.5mm) Plated
11	128 6021	1	Wood Bearing - 1 1/4" (31.75mm) 2 halves		000 8172	36	1/4" (6.35mm) Flatwasher
					000 8210	12	1/4-20 Two-Way Locknut

Continued on next page

Hopper and Level Auger



MC 1795

Hopper and Level Auger

16 ft. 24 ft.
(4.9m) (7.3m)

Ref.	Part No.	Qty.	Description
22	128 0122	1	2 Level Auger 93 1/2" (238cm)
23	128 5050	1	RH Flighting
24	129 0000	1	2 Level Auger Center Shaft 1 1/4" x 10 1/4" (3.175 x 26cm)
25	128 0317	1	2 Level Auger Support
26	129 4202	1	1 Level Auger 86" (218cm)
	000 8161	4	RH Flighting
	000 8170	4	1 Level Auger Motor Mount Plate
	000 8163	8	1/2-13 x 3 1/2" (12.7 x 89mm)
27	001 5120	1	Cap screw (Full Thread)
28	128 5051	1	1/2-13 (12.7mm) Flanged Locknut
	121 6241	1	1/2-13 (12.7mm) Hex Nut
30	128 6208	1	Key-1/4" x 1 1/2" (6.35 x 38.1mm)
30A	128 1960	1	Level Auger Front Shaft
31	128 8951	1	1 1/4" x 10" (3.175 x 25.4cm)
32	123 6884	1	1 1/4" (31.75mm) SK Bushing
			Incl. cap screws & lockwashers
			3V/19.0 x 2 Groove Pulley
			L.A. Motor Flexible Conduit w/Wires
			Rubber Strap w/Hook
			Round Box 1/2" (12.7mm)

16 ft. 24 ft.
(4.9m) (7.3m)

Ref.	Part No.	Qty.	Description
33	129 2857	1	1 Hopper Side Panel - RH Front (Level Auger Switch)
33A	129 5702	2	Port View Lens
34	128 6992	1	Level Switch Rotary (See pg. 57)
35	129 3412	4	Lifting Bar
36	129 2836	3	Hopper Side Panel
37	129 2715	1	Hopper Sectional Panel
39	128 0292	1	Level Auger Brg. Support Bracket
	001 8209	2	3/8-16 x 1" (9.5 x 25.4mm)
	001 8139	2	Hex Washer Head Bolt - Grade 5
	000 8162	2	3/8" (9.5mm) Lockwasher
40	122 1008	1	3/8-16 (9.5mm) Hex Nut
			Level Auger Bearing Kit
			(Incl. Ref. 9, 10, 11 & 39 in quantities reqd. for one bearing)
41	129 2839	-	Auger Cover Long
42	129 2838	1	Auger Cover Short
43	128 2761	1	Pan Under Auger
44	128 2760	2	Auger Pan Support Bracket
45	001 8137	8	3/8"-16 x 2" (9.5 x 50mm)
			Cap screw - Grade 5
	001 8149	8	3/8"-16 (9.5mm) Two-Way Locknut

DRYER MOTORS, IEC PROTECTORS, FAULTS, AND CONTACTORS

MOTOR			PROTECTOR			FAULT		CONTACTOR	
HP	*FLA	M-C Part No.	M-C Part No.	Amps	Telemecanique Square D No.	M-C Part No.	Telemecanique Square D No.	M-C Part No.	Telemecanique Square D No.

230V - 1 PHASE - 60 HZ

#1.5	9.0	124 6627	123 6958	9-14	GV2ME16	125 6865	GV2AD-0101	123 6929	LC1D18F7
2	12.3	121 6862	123 6958	9-14	GV2ME16	125 6865	GV2AD-0101	123 6929	LC1D18F7
3	17.0	128 6829	123 6960	17-23	GV2ME21	125 6865	GV2AD-0101	123 6951	LC1D25F7
5	28.0	201 6815	123 6962	24-32	GV2ME32	125 6865	GV2AD-0101	123 6930	LC1D32F7
†7.5	38.5	124 6816	123 6963	25-40	GV2ME40	125 6866	GV3A08	123 6932	LC1D50F7
†7.5	38.5	124 6888	123 6963	25-40	GV2ME40	125 6866	GV3A08	123 6932	LC1D50F7
10	43.0	124 6818	123 6964	40-63	GV2ME63	125 6866	GV3A08	123 6952	LC1D65F7
				THERMAL	BREAKER				
				M-C & Telemecanique #	M-C & Telemecanique #				
15	65.0	124 6877	123 6947	63-80	123 6971	125 6871	29450	124 6944	DPA93
				LR3D3363	NFNL36125				
20	75.0	124 6879	123 6972	80-104	123 6971	125 6871	29450	124 6944	DPA93
				LR3D3365	NFNL36125				

200/208V - 3 PHASE - 60 HZ

#1.5	4.5	124 6626	123 6956	4-6.3	GV2ME10	125 6865	GV2AD-0101	123 6950	LC1D09F7
2	5.9	121 6861	123 6957	6-10	GV2ME14	125 6865	GV2AD-0101	123 6950	LC1D09F7
3	8.6	128 6818	123 6958	9-14	GV2ME16	125 6865	GV2AD-0101	123 6928	LC1D12F7
5	14.1	128 6815	123 6959	13-18	GV2ME20	125 6865	GV2AD-0101	123 6929	LC1D18F7
7.5	20.6	121 6948	123 6961	20-25	GV2ME22	125 6865	GV2AD-0101	123 6951	LC1D25F7
10	27.5	201 6818	123 6962	24-32	GV2ME32	125 6865	GV2AD-0101	123 6930	LC1D32F7
15	46.0	201 6819	123 6964	40-63	GV2ME63	125 6866	GV3A08	123 6932	LC1D50F7
20	54.0	125 6934	123 6964	40-63	GV2ME63	125 6866	GV3A08	123 6952	LC1D65F7
25	67.0	201 6842							
30	80.0	128 6986	123 6966	60-100	GV7RE100	125 6870	GV7AE11	123 6970	LC1D11F7

230V - 3 PHASE - 60 HZ

#1.5	4.2	124 6626	123 6956	4-6.3	GV2ME10	125 6865	GV2AD-0101	123 6950	LC1D09F7
2	6.0	121 6861	123 6957	6-10	GV2ME14	125 6865	GV2AD-0101	123 6950	LC1D09F7
3	8.1	128 6818	123 6958	9-14	GV2ME16	125 6865	GV2AD-0101	123 6928	LC1D12F7
5	13.0	128 6815	123 6959	13-18	GV2ME20	125 6865	GV2AD-0101	123 6929	LC1D18F7
7.5	19.2	121 6948	123 6961	20-25	GV2ME22	125 6865	GV2AD-0101	123 6951	LC1D25F7
10	24.8	201 6818	123 6962	24-32	GV2ME32	125 6865	GV2AD-0101	123 6930	LC1D32F7
15	37.8	201 6819	123 6964	40-63	GV2ME63	125 6866	GV3A08	123 6932	LC1D50F7
20	50.0	125 6934	123 6964	40-63	GV2ME63	125 6866	GV3A08	123 6952	LC1D65F7
25	61.0	201 6842							
30	72.0	128 6986	123 6966	60-100	GV7RE100	125 6870	GV7AE11	123 6970	LC1D11F7

- C-Frame Unload Auger

‡ - 7/8" shaft

† - 124 6816 has 1-3/8" shaft. 124 6888 has a 1-1/8" shaft.

DRYER MOTORS, IEC PROTECTORS, FAULTS, AND CONTACTORS

MOTOR			PROTECTOR			FAULT		CONTACTOR	
HP	*FLA	M-C Part No.	M-C Part No.	Amps	Telemecanique Square D No.	M-C Part No.	Telemecanique Square D No.	M-C Part No.	Telemecanique Square D No.

380V – 3 PHASE – 50 HZ

#1.5	2.9	127 6860	123 6955	2.5-4	GV2ME08	125 6865	GV2AD-0101	123 6950	LC1D09F7
**1.5	2.9	123 6876	123 6955	2.5-4	GV2ME08	125 6865	GV2AD-0101	123 6950	LC1D09F7
2	3.4	121 6861	123 6956	4-6.3	GV2ME10	125 6865	GV2AD-0101	123 6950	LC1D09F7
**2	3.7	124 6867	123 6956	4-6.3	GV2ME10	125 6865	GV2AD-0101	123 6950	LC1D09F7
3	4.8	128 6818	123 6956	4-6.3	GV2ME10	125 6865	GV2AD-0101	123 6950	LC1D09F7
5	8.0	128 6815	123 6957	6-10	GV2ME14	125 6865	GV2AD-0101	123 6928	LC1D12F7
10	15.2	210 6818	123 6977	8-32	LUCD32FU	123 6978	LUA1C11	123 6976	LUB32
15	23.0	201 6819	123 6977	8-32	LUCD32FU	123 6978	LUA1C11	123 6976	LUB32
20	31.0	125 6934	123 6963	25-40	GV3ME40	125 6866	GV3A08	123 6931	LC1D40F7
30	46.0	128 6986	123 6964	40-63	GV3ME63	125 6866	GV3A08	123 6932	LC1D50F7

460V – 3 PHASE – 60 HZ

#1.5	2.1	124 6626	123 6955	2.5-4	GV2ME08	125 6865	GV2AD-0101	123 6950	LC1D09F7
#1.5	2.5	127 6860	123 6955	2.5-4	GV2ME08	125 6865	GV2AD-0101	123 6950	LC1D09F7
2	3.0	121 6861	123 6955	2.5-4	GV2ME08	125 6865	GV2AD-0101	123 6950	LC1D09F7
3	4.5	128 6818	123 6956	4-6.3	GV2ME10	125 6865	GV2AD-0101	123 6950	LC1D09F7
5	6.9	128 6815	123 6957	6-10	GV2ME14	125 6865	GV2AD-0101	123 6950	LC1D09F7
7.5	10.3	121 6948	123 6958	9-14	GV2ME16	125 6865	GV2AD-0101	123 6928	LC1D12F7
10	12.4	201 6818	123 6977	8-32	LUCD32FU	123 6978	LUA1C11	123 6976	LUB32
15	18.9	210 6819	123 6977	8-32	LUCD32FU	123 6978	LUA1C11	123 6976	LUB32
20	24.8	125 6934	123 6962	24-32	GV2ME32	125 6865	GV2AD-0101	123 6930	LC1D32F7
25	31	201 6842							
30	36	128 6986	123 6963	40-63	GV3ME63	125 6866	GV3A08	123 6932	LC1D50F7

575V – 3 PHASE – 60 HZ

#1.5	1.7	124 6626	123 6955	2.5-4	GV2ME08	125 6865	GV2AD-0101	123 6950	LC1D09F7
#1.5	2	127 6862	123 6955	2.5-4	GV2ME08	125 6865	GV2AD-0101	123 6950	LC1D09F7
2	2.4	127 6816	123 6955	2.5-4	GV2ME08	125 6865	GV2AD-0101	123 6950	LC1D09F7
3	3.6	127 6814	123 6955	2.5-4	GV2ME08	125 6865	GV2AD-0101	123 6950	LC1D09F7
5	5.5	127 6847	123 6956	4-6.3	GV2ME10	125 6865	GV2AD-0101	123 6950	LC1D09F7
7.5	8.2	127 6828	123 6957	6-10	GV2ME14	125 6865	GV2AD-0101	123 6950	LC1D09F7
10	10.8	127 6857	123 6977	8-32	LUCD32FU	123 6978	LUA1C11	123 6976	LUB32
15	15.6	127 6845	123 6977	8-32	LUCD32FU	123 6978	LUA1C11	123 6976	LUB32
20	19.5	127 6844	123 6977	8-32	LUCD32FU	123 6978	LUA1C11	123 6976	LUB32
25	25	127 6846							
30	30	124 6902	123 6977	8-32	LUCD32FU	123 6978	LUA1C11	123 6976	LUB32

- "C" Unload Auger
 ** - "C" Face Oil Fired Burner
 ‡ - 7/8" shaft

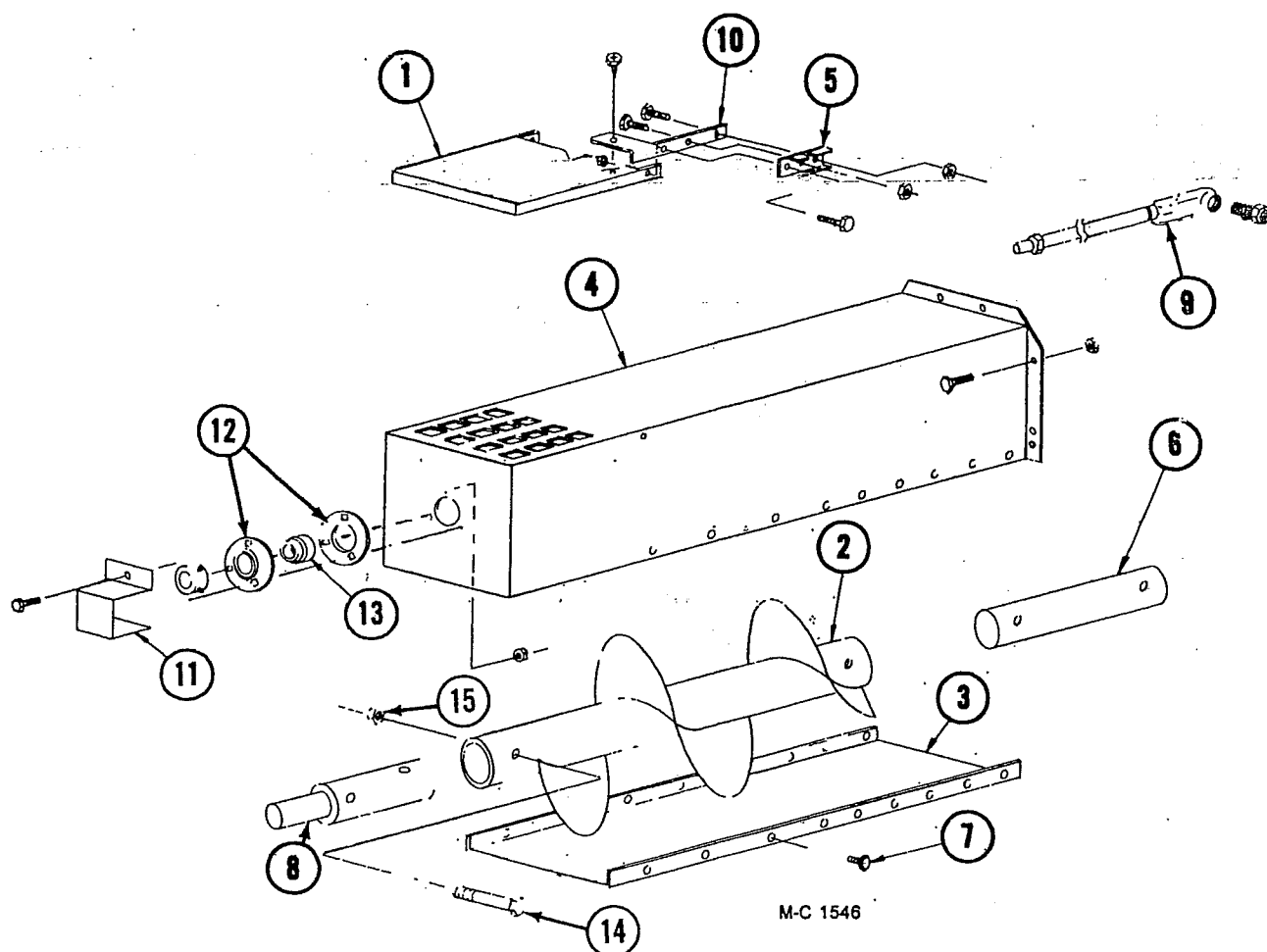
Electrical Components

Infinity Series CF620C & CF820C

(Starting w/Serial No. 58624)

Part No.	Description	Part No.	Description
120 6800	Unload Switch	127 6823	Neutral Lug
125 6994	Air Pressure Switch	124 6978	60 Minute Adjustable Timer
125 6967	High Limit Switch - 8 ft. (2.4m) Cap.	124 6874	SCR Board (Dart)
125 6965	115V Ignition Board	124 6837	1/3HP DC Motor
128 6995	Style 2 Electrode	128 6957	Splitter Block
124 6872	Flame Sensing Probe	128 6992	Level Switch-Diaphragm Type
Terminal Block		127 6855	Transformer-208V (750VA)
124 6928	12 Position (Black)	127 6829	Transformer-460/575V (750VA)
124 6929	3 Position (White)	125 6997	13 Amp (208V) Circuit Breaker
125 6805	4 Position (Black)	125 6993	4 Amp (460V) Circuit Breaker
115V LP Gas Solenoid Valves		125 6993	4 Amp (575V) Circuit Breaker
125 7082	1/2" (12.7mm) Solenoid Valve LP Liquid Line	124 1195	SCR Speed Control 10 Turn Potentiometer w/Wires 42" (107cm)
123 7036	1/2" (12.7mm) Solenoid Valve (Canadian)	124 6892	Multi-Dial
121 7002	3/4" (19mm) Solenoid Valve Low Fire Manifold	124 6893	Thermistor
123 7037	3/4" (19mm) Solenoid Valve (Canadian)	124 6955	Moisture Control Potentiometer w/Wires 60" (152cm)
128 7001	1 1/4" (31.8mm) Solenoid Valve Gas Manifold	121 6805	10 Amp. GLH Fuse (SCR Board)
123 7038	1 1/4" (31.8mm) Solenoid Valve (Canadian)	124 6995	Moisture Control Board
115V Natural Gas Solenoid Valves		124 6981	Discharge Meter
121 7002	3/4" (19mm) Solenoid Valve Low Fire Manifold	124 7004	Digital Read-Out Meter (RED)
123 7037	3/4" (19mm) Solenoid Valve (Canadian)	124 6961	Thermocouple 15 ft. (4.6m) Digital Thermometer
128 7001	1 1/4" (31.75mm) Solenoid Valve Gas Manifold	125 6936	Fuse Holder for 124 6937 & 125 6838
123 7038	1 1/4" (31.8mm) Solenoid Valve (Canadian)	124 6937	1 Amp. Fuse-Slow Blow (Moisture Control Board & Printer Power Supply)
125 6988	8 Amp Circuit Breaker 115V Pole	125 6838	3/4Amp. Fuse (Monitor Power Supply)
128 6845	Stop Button (Red)	122 7066	Monitor Interface Board °Fahrenheit
128 6844	Start Button (Green)	122 7067	Monitor Interface Board °Celsius
125 6808	125V Indicator Lamp Assembly	122 7071	Printer Interface Board °Fahrenheit
125 6812	SPST ON-OFF Switch (Ignition)	122 7072	Printer Interface Board °Celsius
125 6811	3PDT ON-OFF-ON Switch (Discharge Metering Rolls)	122 7065	Monitor Power Supply
125 6809	Momentary Contact Switch	122 7070	Printer Power Supply
125 6810	DPDT ON-OFF-ON Switch (Level Auger)	122 7074	Printer Assembly
124 6996	0 to 3 Minute Adj. Timer (Level Auger)	125 6839	Switch ON-OFF Printer
124 6841	Light Bulb Socket	128 7016	Grain Sensor w/40 ft. (12.2m) Cable - Monitor
124 6842	50W Rough Service Bulb	122 7061	Thermal Paper 3 1/8" x246 ft. (7.94cm x 75m)
124 6972	Relay and Timer Socket	122 7069	Calibration Adjust. Potentiometer
021 6809	Relay	125 6834	Push Button for Calibration & Grain Temperature Display
		122 7068	Digital Display Meter-Monitor
		1257036	Relay - Ignition Board
		1257037	Relay Socket - Ignition Board

**Optional - 10" (25.4cm) Unloading Auger Extension Kit,
2 ft. (.61m) - 127 1229,
4 ft. (1.22m) - 127 1230, and
6 ft. (1.83m) - 127 1233**

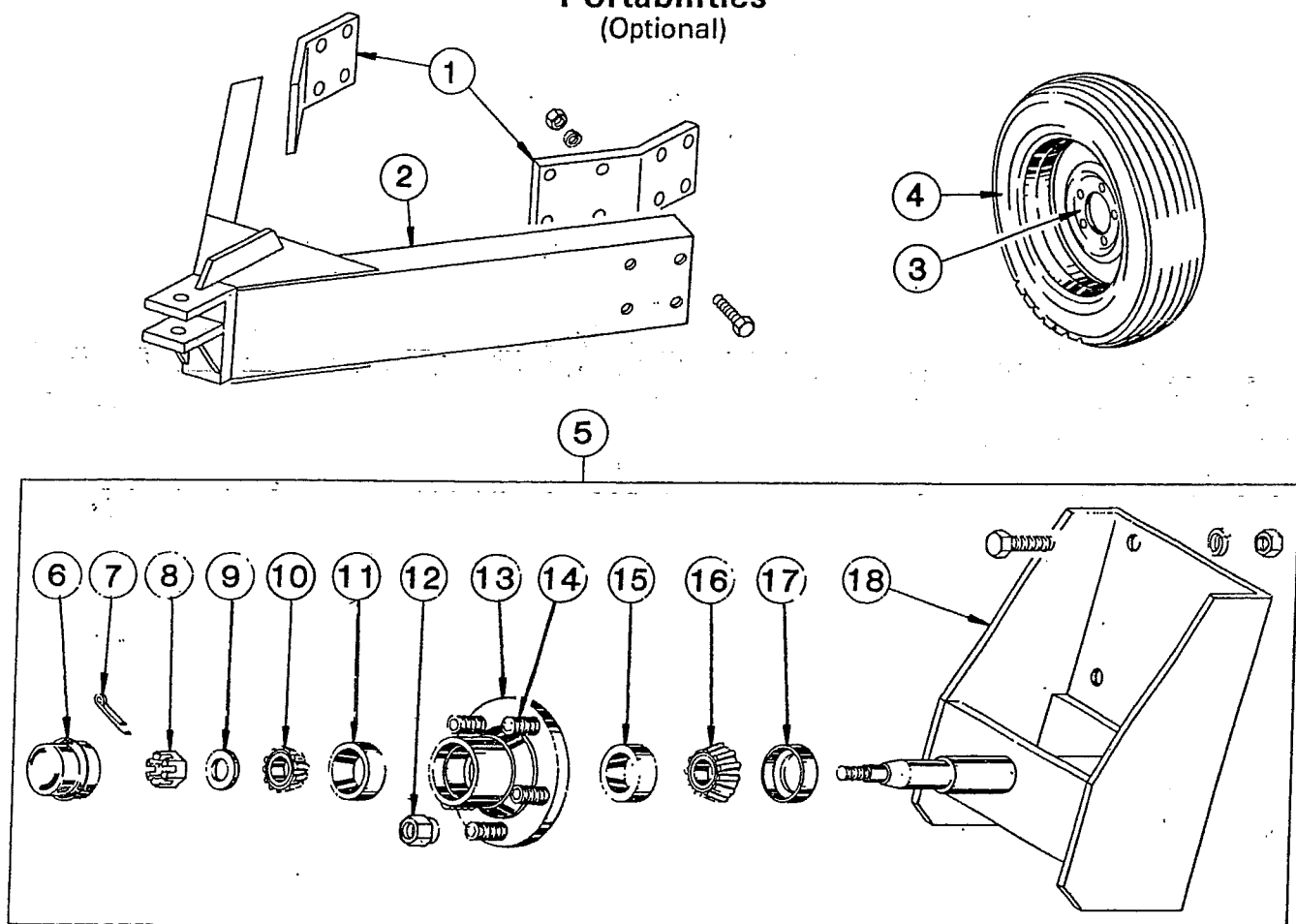


Ref.	Part No.	Qty.	Description
1	128 4712	1*	Over Load Door
2	128 0310	1	2 ft. (.61m) Extension Auger
	128 0312	1	4 ft. (1.22m) Extension Auger
	128 0315	1	6 ft. (1.83m) Extension Auger
3	124 4474	1	2 ft. (.61m) Bottom Cover
	124 4475	1	4 ft. (1.22m) Bottom Cover
	124 4476	1	6 ft. (1.83m) Bottom Cover
4	128 0311	1	2 ft. (.61m) Discharge Housing
	128 0313	1	4 ft. (1.22m) Discharge Housing
	128 0314	1	6 ft. (1.83m) Discharge Housing
5	120 6801	1*	Switch Mount Clip
6	128 5618	1*	Unload Auger Link
7	001 8202	-	5/16-18 x 3/4" (7.9 x 19mm) HWH Gr.5 Tapping Bolt (Qty. - 8, 16 or 24)

Ref.	Part No.	Qty.	Description
8	124 5611	1*	U.A. Output Shaft
9	127 1231	1	2 ft. (.61m) Extension Liquatite Assembly
	127 1232	1	4 ft. (1.22m) Extension Liquatite Assembly
	127 1234	1	6 ft. (1.83m) Extension Liquatite Assembly
10	128 2937	1*	Bulb Mount
11	128 3011	1*	Stub Shaft Guard
12	001 6004	2*	1 1/4" (31.8mm) Bearing Flangettes
13	001 6003	1*	1 1/4" (31.8mm) Bearing w/Collar
14	000 8229	4	3/8-16 x 2 3/4" (9.5 x 69.9mm) HHCS Grade 5 ZP
15	000 8205	4	3/8-16 (9.5mm) Flanged Locknut
16	120 6800	1*	Unload Switch

*Not included in kit when field installed.

Portabilities (Optional)



M-C 980

120 1030 - 4 Wheel Portabilities (Incl. ref. 1 & 2 and four of ref. 3 & 5 - less tires)

120 1031 - 6 Wheel Portabilities (Incl. ref. 1 & 2 and six of ref. 3 & 5 - less tires)

120 1043 - 8 Wheel Portabilities (Incl. ref. 1 & 2 and eight of ref. 3 & 5 - less tires)

120 1040 - Additional Portabilities (Incl. two of ref. 3 & 5 - less tires)

Ref.	Part No.	Qty.	Description	Ref.	Part No.	Qty.	Description
1	128 3671	2	Pole Mount Brkt.	6	001 8996	1	Hub Cap
	128 8196	8	3/4 - 10 x 2 1/2" Capscrew - Grd. 5	7	001 8252	1	Cotter Pin - 1/8" x 1"
	000 8182	8	3/4" Lockwasher	8	001 8253	1	Spindle Nut
	000 8165	8	3/4 - 10 Hex Nut	9	001 8254	1	Spindle Washer
2	120 0047	1	Dryer Pole	10	001 6000	1	Bearing Cone - Outer
	128 8195	8	3/4 - 10 x 2" Capscrew - Grd. 5	11	002 6000	1	Bearing Cup - Outer
	000 8182	8	3/4" Lockwasher	12	001 8989	5	1/2 - 20 Lug Nut - 45°
	000 8165	8	3/4 - 10 Hex Nut	13	001 8992	1	Wheel Hub Ass'y. - 5 Bolt (Incl. ref. 11, 14 & 15)
3	001 8993	1	5 Bolt Wheel - 15"	14	002 8152	5	1/2 - 20 x 1 1/2" Stud
4	127 8990	1	7.60 x 15 - 6 Ply Tubeless Tire	15	002 6001	1	Bearing Cup - Inner
5	120 1028	1	Wheel Spindle & Hub Ass'y. (Incl. ref. 6 thru 18)	16	001 6001	1	Bearing Cone - Inner
	000 8146	6	5/8 - 11 x 1 1/2" Capscrew - Grd. 5	17	001 8991	1	Seal
	000 8181	6	5/8" Lockwasher	18	120 0031	1	Wheel Mount
	000 8164	6	5/8 - 11 Hex Nut				

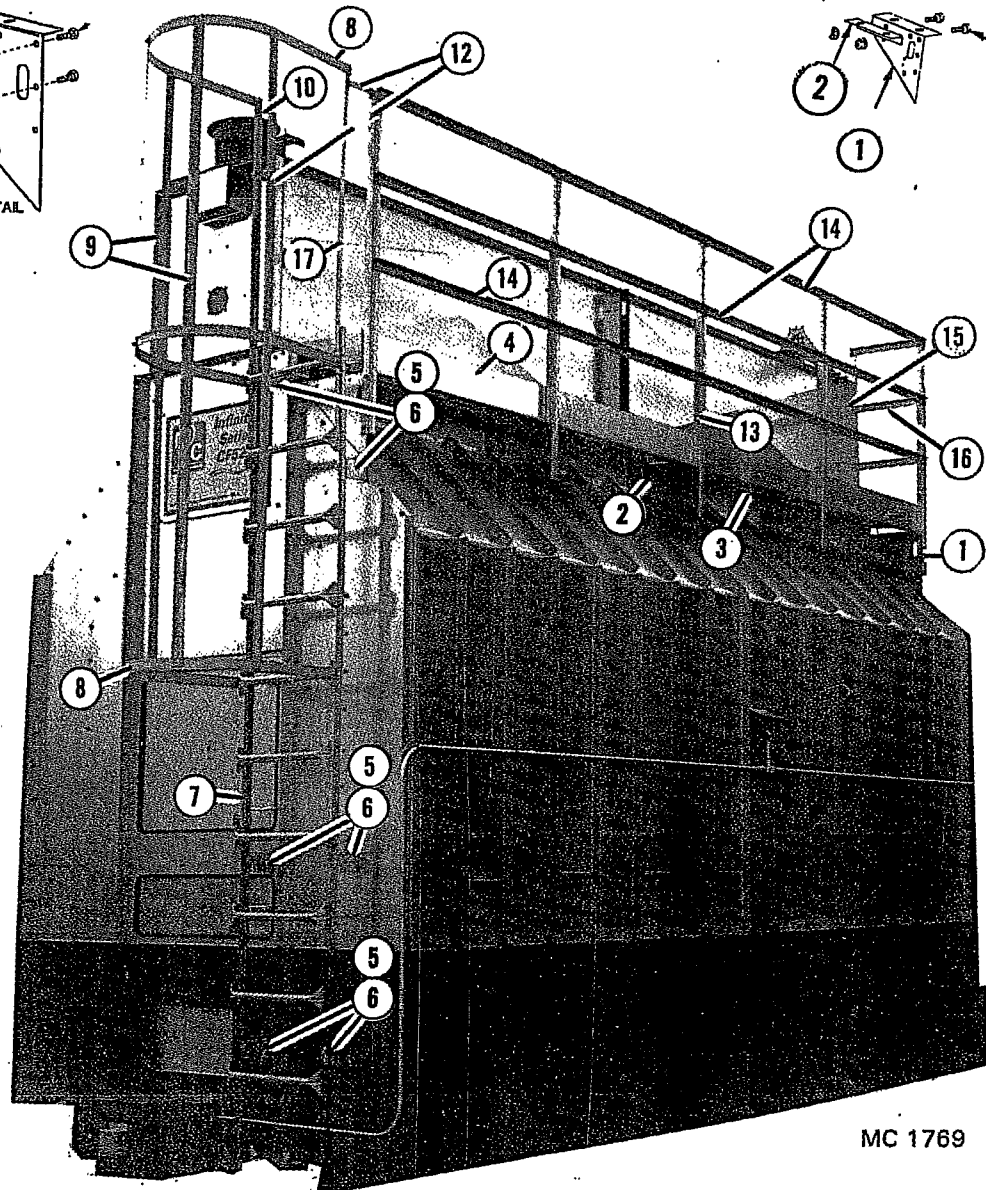
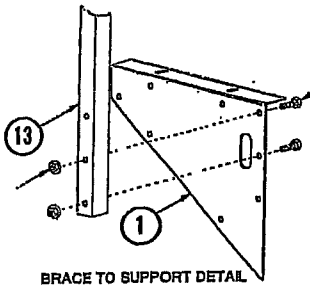
Infinity Wet Hopper Walkway (Optional)

8 ft. 16 ft. 24 ft.
(2.4m)(4.9m)(7.3m)

Ref.	Part No.	Qty.	Qty.	Qty.	Description
1	129 2600	3	5	7	Bridge Support
2	129 2602	2	2	3	Grating Support
3	129 8700	1	2	3	Walkway Grating 8 ft. (2.4m)
	120 8994	6	12	18	Grating Anchor Clip
	001 8276	6	12	18	5/16-18x3" (7.9x76mm) Carriage Bolt
	000 8304	6	12	18	5/16"(7.9mm) Flanged Locknut
4	128 2683	1	2	3	Walkway Toe Kick 96" (244cm)
5	128 2685	6	6	6	Ladder Mounting Bracket
	000 8306	6	6	6	5/16-18x¾" (7.9x19mm) Washer Head Bolt
	000 8304	6	6	6	5/16"(7.9mm) Flanged Locknut
6	490 8704	6	6	6	Ladder Bracket Clip
7	490 8703	1	1	1	Ladder 10 ft. (3m)

8 ft. 16 ft. 24 ft.
(2.4m)(4.9m)(7.3m)

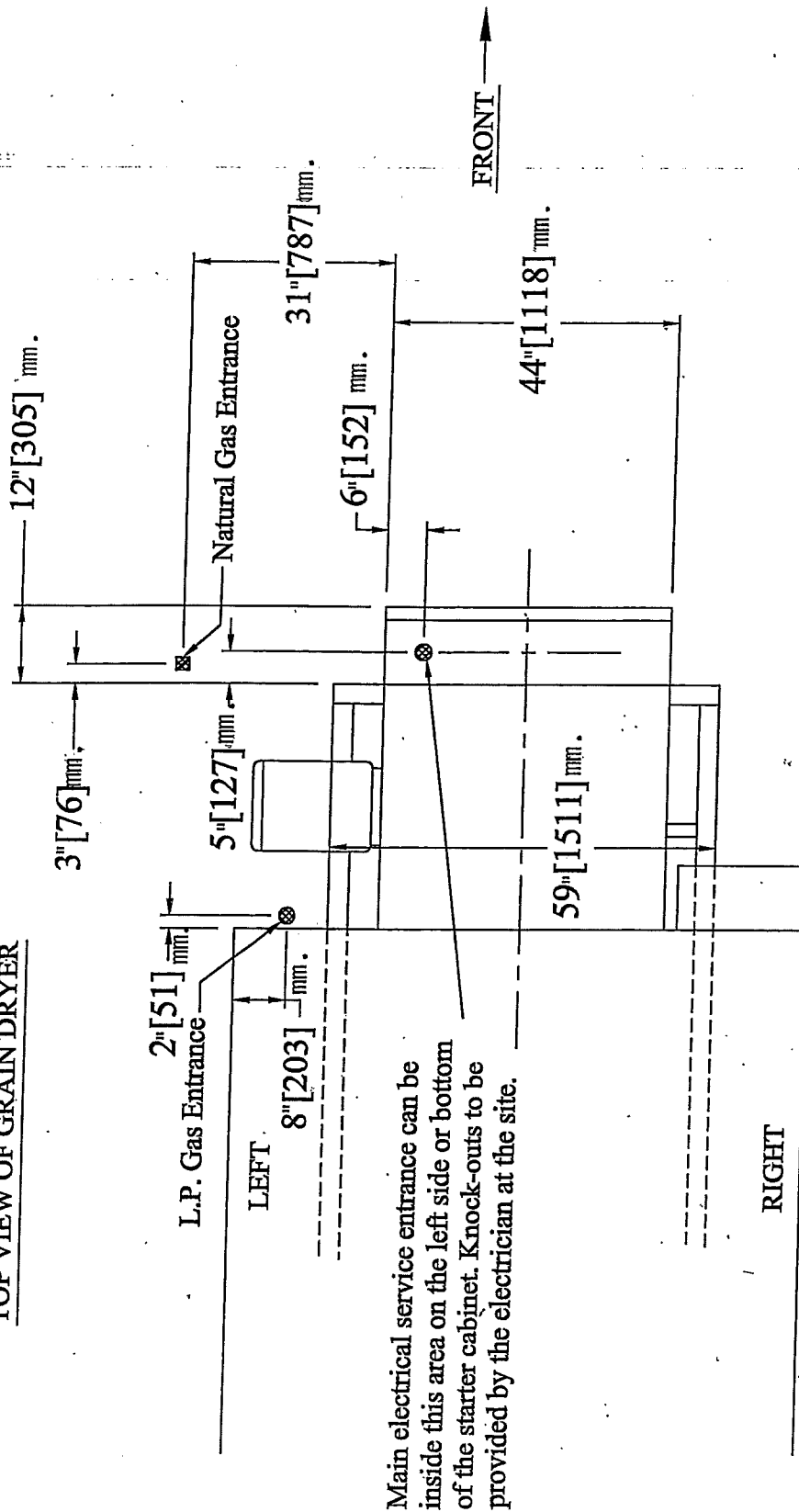
Ref.	Part No.	Qty.	Qty.	Qty.	Description
8	128 2015	3	3	3	Ladder Cage Hoop
	000 8307	12	12	12	5/16-18x¾" (7.9x19mm) Round Head Bolt
	001 8202	4	4	4	5/16-18x¾" (7.9x19mm) Hex Bolt
	000 8169	16	16	16	5/16"(7.9mm) Flanged Locknut
9	129 2033	4	4	4	Ladder Cage Strap 8 ft. (2.4m)
10	129 2031	1	1	1	Ladder Extension Left 61" (155cm)
11	129 2030	1	1	1	Ladder Extension Right 61" (155cm)
12	129 2624	2	2	2	Top Cage Mount Bracket
13	129 2021	3	5	7	Guard Rail Brace 55½" (141cm)
14	129 2004	3	6	9	Guard Rail 98" (249cm)
15	129 2623	1	1	1	Short Rail Support Bracket
16	129 2032	3	3	3	Short Guard Rail 18½" (46cm)



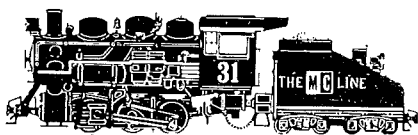
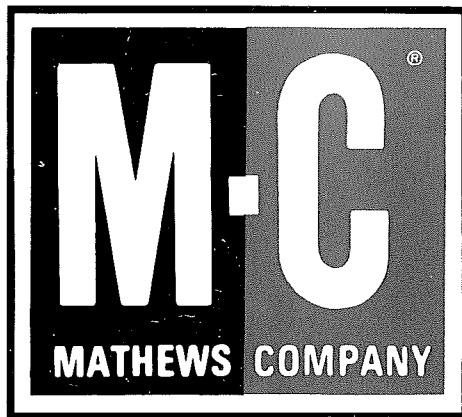
MC 1769

Dimensions and locations apply only to 75 & 80 series grain dryers

TOP VIEW OF GRAIN DRYER



Note: Fuel supply attachment elevation.
Dimension is from bottom of dryer base skid up to beginning of stand pipe.
LP Entrance is 12" from bottom of skid to beginning of stand pipe.
Natural Gas entrance is 26" from bottom of skid to beginning of stand pipe.
(66cm.)



Iron Horse Quality