

\$5.00

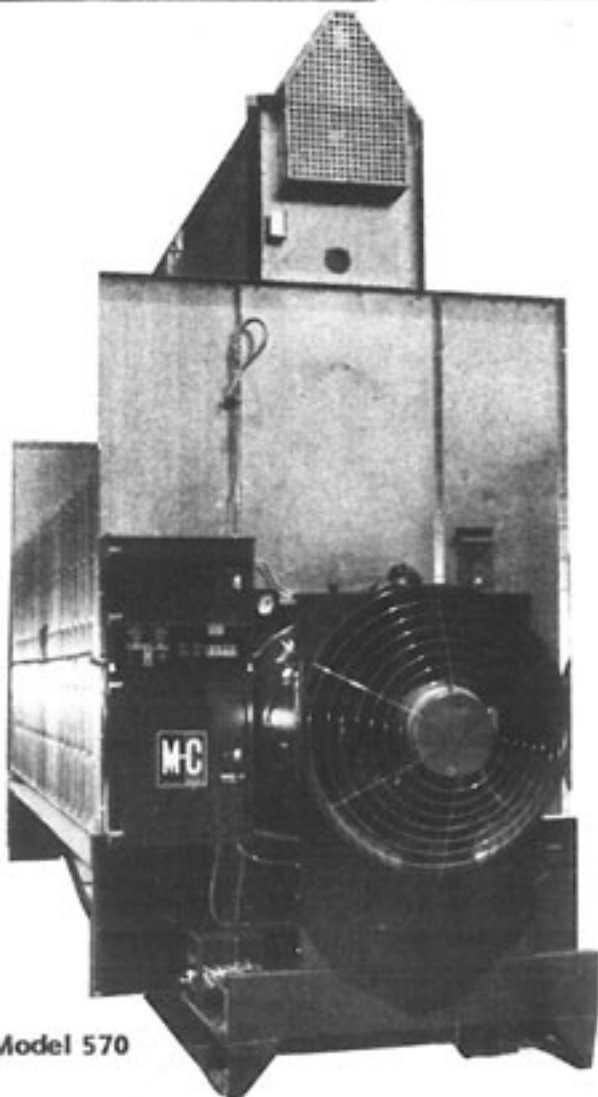


## Model 370 & 570

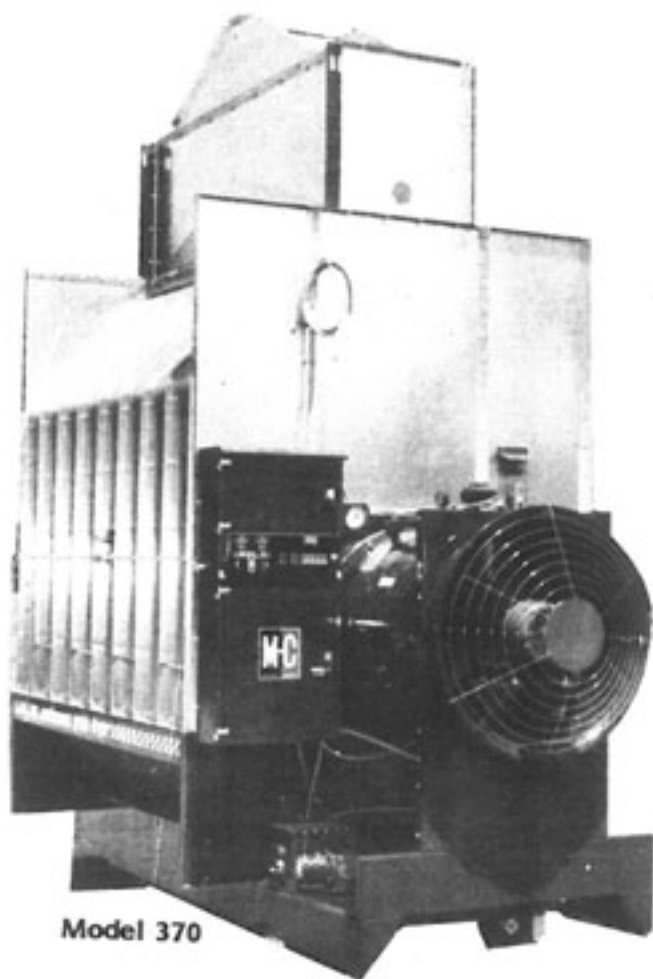
(EM and EMS)

## Continuous Flow Grain Dryers

(Starting w/Serial No. 57389)



Model 570



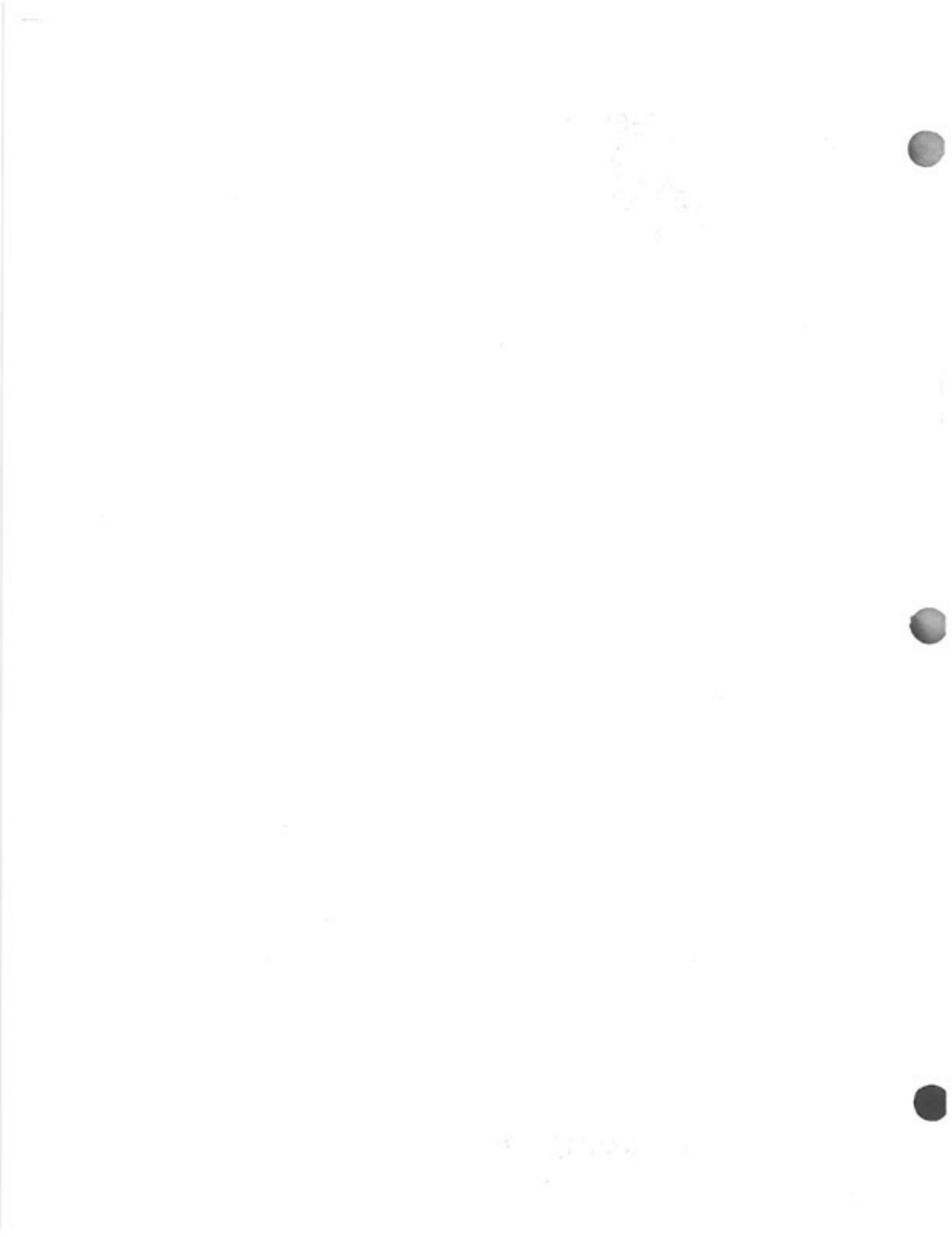
Model 370

# PARTS CATALOG

Form No. D369 March 2001

**Mathews Company /**

500 Industrial Avenue, P.O. Box 70,  
Crystal Lake, Illinois 60039-0070 U.S.A.  
Phone: 815/459-2210 ♦ Fax: 815/459-5889  
[www.mathewscompany.com](http://www.mathewscompany.com)



# CONTENTS

	Page
<b>Introduction</b>	
Parts Ordering Instructions.....	1
Model and Serial Number Location.....	1
Capscrew Grade Identification.....	1
<b>Parts</b>	
Air Pressure Switch .....	31
Augers	
Level .....	28
Unload .....	2-7
Belts	
Level Auger .....	28
Unload Auger .....	14
Bin Level Indicator .....	31
Burner .....	17
Cabinets	
115V Control Cabinet .....	24-26
Circuit Breakers - Level Auger, Unload Auger & Fan Motor.....	32-33
Coils	
Magnetic Starter - 115V .....	32-33
$\frac{3}{4}$ " (19.0mm) Solenoid Valve .....	21
$1\frac{1}{4}$ " (31.75mm) Solenoid Valve .....	23
$\frac{1}{2}$ " (12.7mm) Solenoid Valve .....	22
Contacts - For Magnetic Starters.....	34
Control Panel Lights, Switches and Controls.....	27
Decal Kit - All Models.....	13
Electrical Components in 115V Control Cabinet .....	26
Electrode .....	19
End Panels	
370 and 570.....	12
Fan.....	18
Fan Motor .....	18
Fan Motor Mount.....	18
Fan Orifice .....	16
Fan Orifice Supports .....	16
Flame Sensing Probe .....	19
Floor Panels - 370 and 570.....	12
Guards	
Fan .....	16
Level Auger Motor.....	30
SCR Drive.....	15

Continued on next page

	Page
High Limit Switch .....	31
Hopper	
370.....	30
570.....	28
Ignition Board .....	26
Ignition Wires .....	19
Interlocks - For Magnetic Starters.....	34
Jumper Straps - For Magnetic Starters.....	34
Level Auger	
Belts .....	28
Motor.....	28
Motor Mount.....	28
Switch Assembly .....	31
Lights, Control Panel .....	27
LP Gas Liquid Line Piping .....	22
LP Gas Manifold and Piping.....	20-21
Magnetic Starters .....	32-33
Manifolds	
LP Gas .....	20-22
Natural Gas.....	23
Mercury Switch.....	2, 4, 6
Metering Rolls .....	2-7
370.....	2-3
570.....	4-7
Modulating Valves .....	21, 23
Modulating Valve Power Elements.....	21, 23
Moisture Control	
Moisture Control Board .....	26
Potentiometer .....	27
Thermistor Sensor .....	31
Motors .....	32-33
Natural Gas Manifold and Piping.....	23
Orifice Liner .....	16
Portabilities .....	35
Pressure Gauge (Gas).....	21, 23
Pressure Regulator (LP Gas) .....	21

Continued on next page

	Page
Relays .....	26
Relief Valve - LP Gas .....	22
SCR Drive Unload System	
Control Board .....	26
Motor and Gear Box .....	14
Potentiometer .....	27
Screens	
Base Screens .....	9
Upper Screens .....	10
Solenoid Valves	
½" (12.7mm) - LP Gas .....	22
¾" (19.0mm) - LP Gas .....	20-21
1 ¼" (31.75mm) - Natural Gas .....	23
Switches, Control Panel .....	27
Terminal Tracks .....	26
Thermistor .....	31
Thermometer .....	25
Timers	
0 to 3 Minute Adjustable - Level Auger - 570 Only .....	26
60 Minute Adjustable - Low Grain Level & Cold Grain .....	26
Transformers .....	24
Unload Auger	
Auger .....	2-7
Belts .....	14
Motor .....	14
Pans .....	8
10" (25.4cm) Unloading Auger Extension Kits, 2' (.61m), 4' (1.22m), & 6' (1.83m) .....	37
Vaporizer Coil - LP Gas .....	17
Walkway (Optional) .....	36

## NOTES

---



---



---



---



---



---



---

**Par**

1.

2.

3.

**NOT**

incl

sepi

4.

5.

**Mo**

The

are :

base

drye

# INTRODUCTION

## Parts Ordering Instructions

1. Order parts from your local M-C Dealer or distributor.
2. Always furnish the Grain Dryer model and serial number. This information is stamped on the serial number plate.
3. When ordering parts be sure to furnish the part number, description and quantity required.

**NOTE:** Attaching hardware is listed (but not included) with the main part. It must be ordered separately.

4. Inspect all shipments upon receipt. If any packages and/or boxes are missing, or parts are damaged, file a claim with the carrier immediately. Failure to do so may void a claim. Check the shipment against the packing list carefully. Report any shortages to the shipper immediately.
5. Do not return any parts to the Mathews Company without a "Return Goods Authorization" from the factory. All return parts shipments must be shipped prepaid (COD shipments will not be accepted). Shipments must also include the following:
  - A. A letter of explanation including the "Return Goods Authorization Number," your name and address.
  - B. A list of all parts being returned. List must include part numbers, description, quantity, and original invoice number.

## Model and Serial Number Location

The model and serial number of your Grain Dryer are stamped on a plate located on the left front base panel, see Figure 1. On earlier production dryers, the plate is on the dryer front end panel

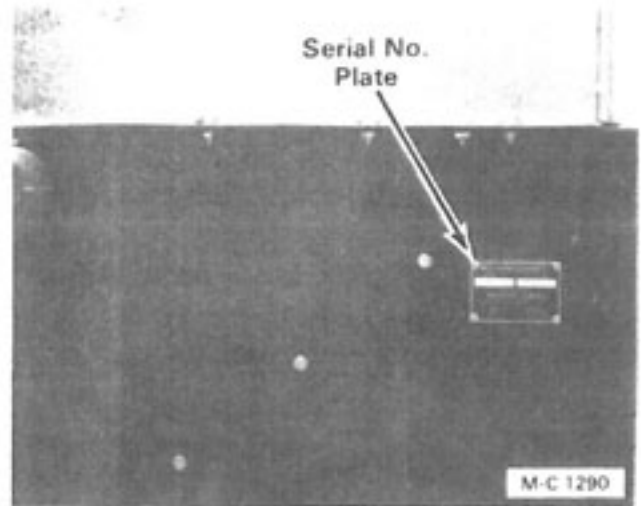


Figure 1

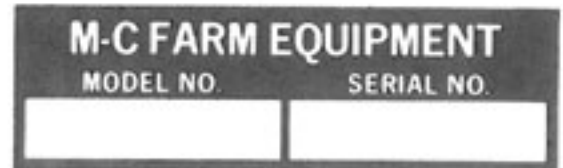


Figure 2

just above the location shown in Figure 1. Record the model and serial number in the blank spaces in Figure 2.

## Capscrew Grade Identification

There are four grades of hex-head capscrews. Grade 1 and 2 are common capscrews, grade 5 and 8 are used when greater strength is required. Each grade can be identified by the marking on the head of the capscrew, see chart below.

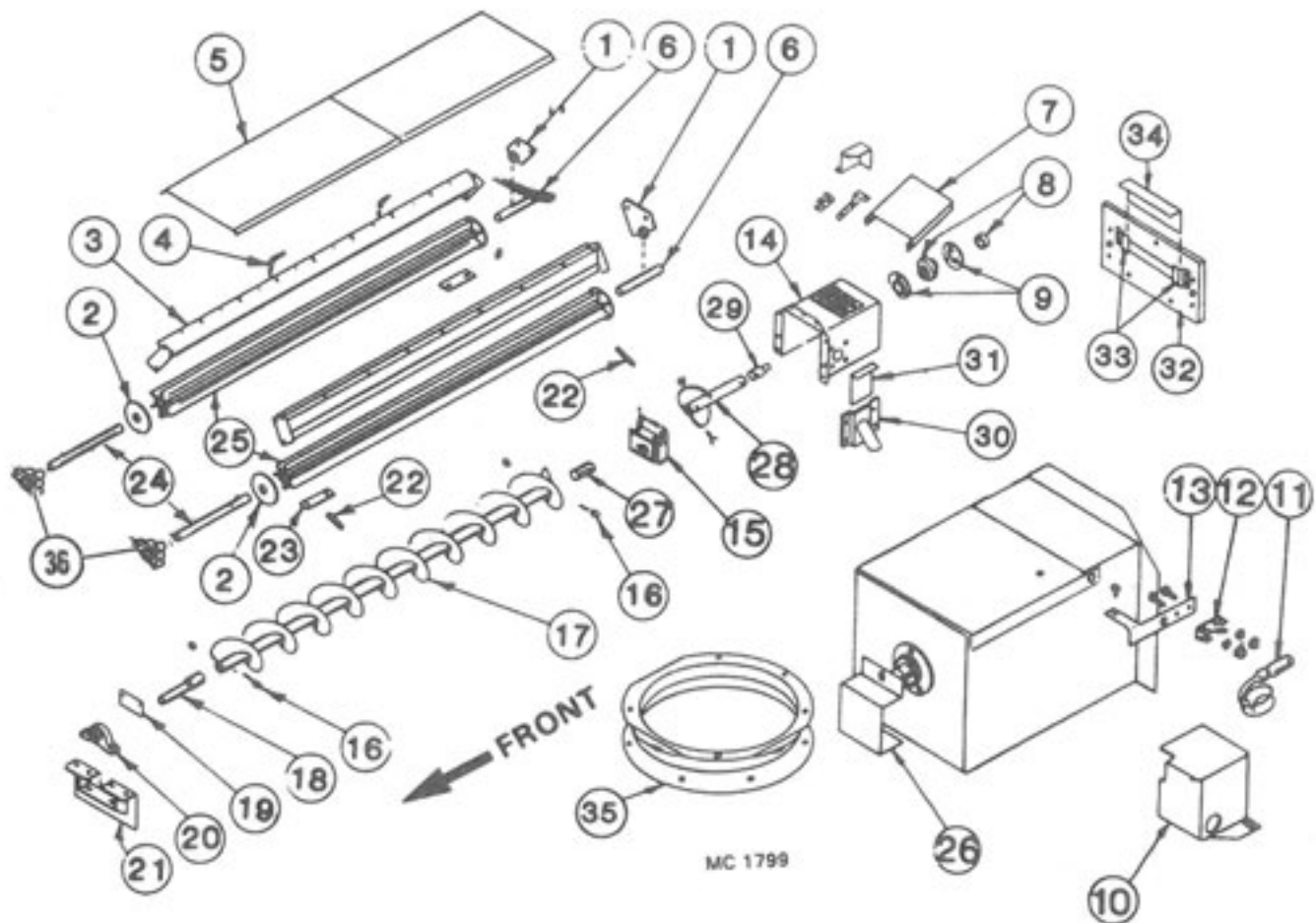
When replacing capscrews, be sure to use the correct size and grade. If a specific grade is not shown as part of the description, the capscrew is a grade 1 or 2.

## CAPSCREW GRADE IDENTIFICATION CHART

SAE Grade	Description	Capscrew Head Marking*
1	WILL HAVE A PLAIN HEAD - NO RADIAL LINES	
2	Low or Medium Carbon Steel Not Heat Treated	
5	WILL HAVE 3 RADIAL LINES Quenched and Tempered Medium Carbon Steel	
8	WILL HAVE 6 RADIAL LINES Quenched and Tempered Special Carbon or Alloy Steel	

\*The center marking identifies the capscrew manufacturer.

## 370 METERING ROLLS AND UNLOAD AUGER



Ref.	Part No.	Qty.	Description
1	128 1063	2	Metering Roll Bearing w/Bronze Bushing
	001 8202	4	5/16-18 x 3/4" (7.9 x 19mm) Hex Bolt
	000 8169	4	5/16-18 (7.9mm) Flanged Locknut
2	121 4438	AR	Metering Roll Washer-11 Gauge
	128 4970	AR	Metering Roll Washer-16 Gauge
3	128 0225	2	Inner Screen Mount
	001 8202	12	5/16-18 x 3/4" Hex Bolt
	000 8169	12	5/16-18 Flanged Locknut
4	128 8958	4	Support Rod 3/8" x 4 3/8" (9.5 x 111mm)
	000 8173	4	5/16" (7.9mm) Flatwasher
	000 8168	12	3/8-16 (9.5mm) Flanged Locknut
5	128 2890	2	Unload Auger Cover
	001 8111	4	5/16-18 (7.9mm) Clip Nut
	001 8114	4	5/16-18 x 3/4" (7.9x19mm) Wing Screw
	000 8173	4	5/16" (7.9mm) Flatwasher

Ref.	Part No.	Qty.	Description
6	121 5042	2	Metering Roll Stub Shaft (Rear) 1 1/4" x 5" (31.75mm x 12.7cm)
7	128 4712	1	Over Load Door
	001 8210	2	3/8-16 x 3/4" (9.5x19mm) Hex Bolt
	000 8205	2	3/8-16 Top Lock Flanged Nut
8	001 6003	1	1 1/4" Bearing w/Lock Collar
9	001 6004	2	1 1/4" Bearing Flangette
	001 8210	3	3/8-16 x 3/4" (9.5x19mm) Hex Bolt
	000 8168	3	3/8-16 (9.5mm) Flanged Locknut
10	128 4896	1	Shut-Off Switch Cover
	001 8284	2	5/16-12 x 1/2" (7.9x12.7mm) Self-Tapping Screw
11	120 6800	1	Shut Off Switch
12	120 6801	1	Switch Mount Clip
	000 8282	2	6-32 x 1/4" (6.35mm) Machine Screw
	000 8185	2	6-32 Flanged Locknut
13	128 2937	1	Switch Mount



## 370 METERING ROLLS AND UNLOAD AUGER

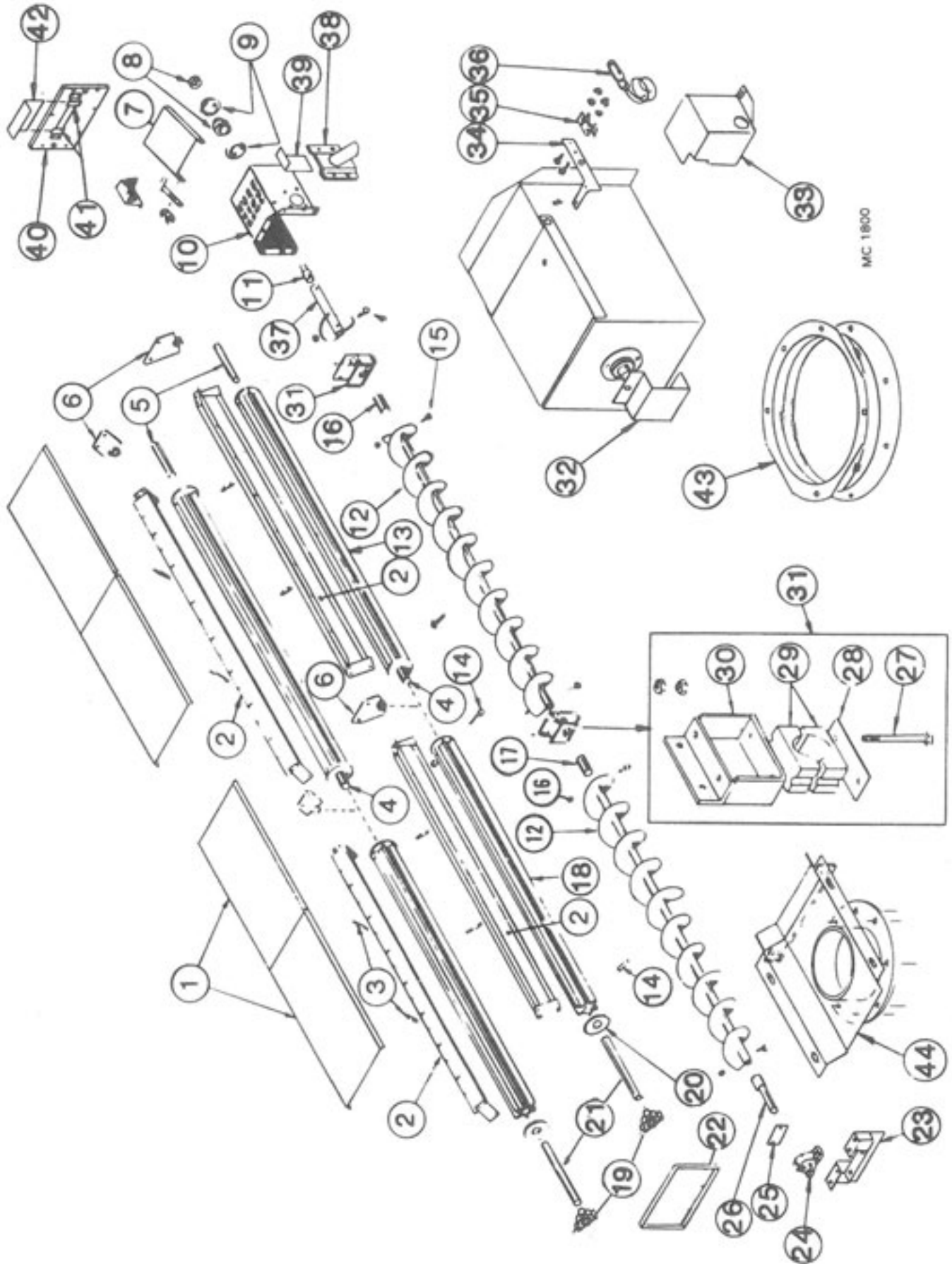
Ref.	Part No.	Qty.	Description
14	128 0345	1	Unload Auger Discharge
	001 8148	6	5/16 x 3/4" Hex Washer Head Bolt - Grd. 5
	000 8168	6	5/16 Flanged Locknut
	000 8137	2	1/2-13 x 1 1/4" (12.7 x 31.75mm) Hex Bolt - Grd. 5
	000 8180	2	1/2" (12.7mm) Lockwasher
	000 8163	2	1/2-13 (12.7mm) Hex Nut
15	122 1007	1	Unload Hanger Bearing Kit
16	000 8229	8	5/16 x 2 1/2" Capscrew - Grd. 5
	000 8205	8	Top Lock Flange Nut
17	128 0244	1	Unload Auger 10" (25.4cm)
18	124 5610	1	Unload Auger Input Shaft
19	128 3008	1	Front Seal Plate
	000 8184	4	8-18 x 1/2" (12.7mm) Sheet Metal Screw
20	001 6011	1	1-7/16" (36.5mm) Bore Pillow Block Bearing
	001 8299	2	1/2-13 x 1 3/4" (12.7 x 44.5mm) Capscrew - Grd. 8 w/Nylock
	001 8257	2	1 1/2" (38.1mm) SAE Flatwasher
	000 8163	2	1/2-13 (12.7mm) Hex Nut
21	128 0247	1	Unload Auger Front Plate
	001 8210	4	5/16 x 3/4" (9.5 x 19mm) Hex Washer Head Bolt - Grd. 5
	000 8168	4	5/16 (9.5mm) Flanged Locknut
22	000 8114	4	5/16 x 2 1/2" (7.9 x 63.5mm) Capscrew
	000 8222	4	5/16" (7.9mm) Lockwasher
	000 8159	4	5/16" (7.9mm) Hex Nut
23	121 2637	2	Clean-Out Cover
	000 8168	4	5/16 (9.5mm) Flanged Locknut
24	128 5042	2	Metering Roll Shaft (Front) 1 1/4 x 6 1/4" (31.75mm x 15.9cm)
25	128 1186	2	Metering Roll Assembly (Incl. shafts)
26	128 3011	1	Stub Shaft Guard
27	128 5618	1	Unload Auger Link
28	128 0309	1	Standard Auger Weld
29	124 5611	1	Unload Auger Output Shaft
30	128 0341	1	Grain Sampler
31	128 2842	1	Slide Gate Door - Sampler
32	128 2954	1	Base Panel Access Door w/Slot
33	128 2885	2	Access Door Bracket
34	128 2887	1	Access Door Slot Cover
35	128 0343	1	Discharge Ring 10" (25.4cm) Diameter
36	001 6016	2	1 1/4" (31.8mm) 3 Bolt Flange Bearing SN #57386 & Up

11

lear)  
7cm)  
x Bolt  
nut  
r  
  
x Bolt  
cknut  
  
m)

chine

# 570 METERING ROLLS AND UNLOAD AUGER



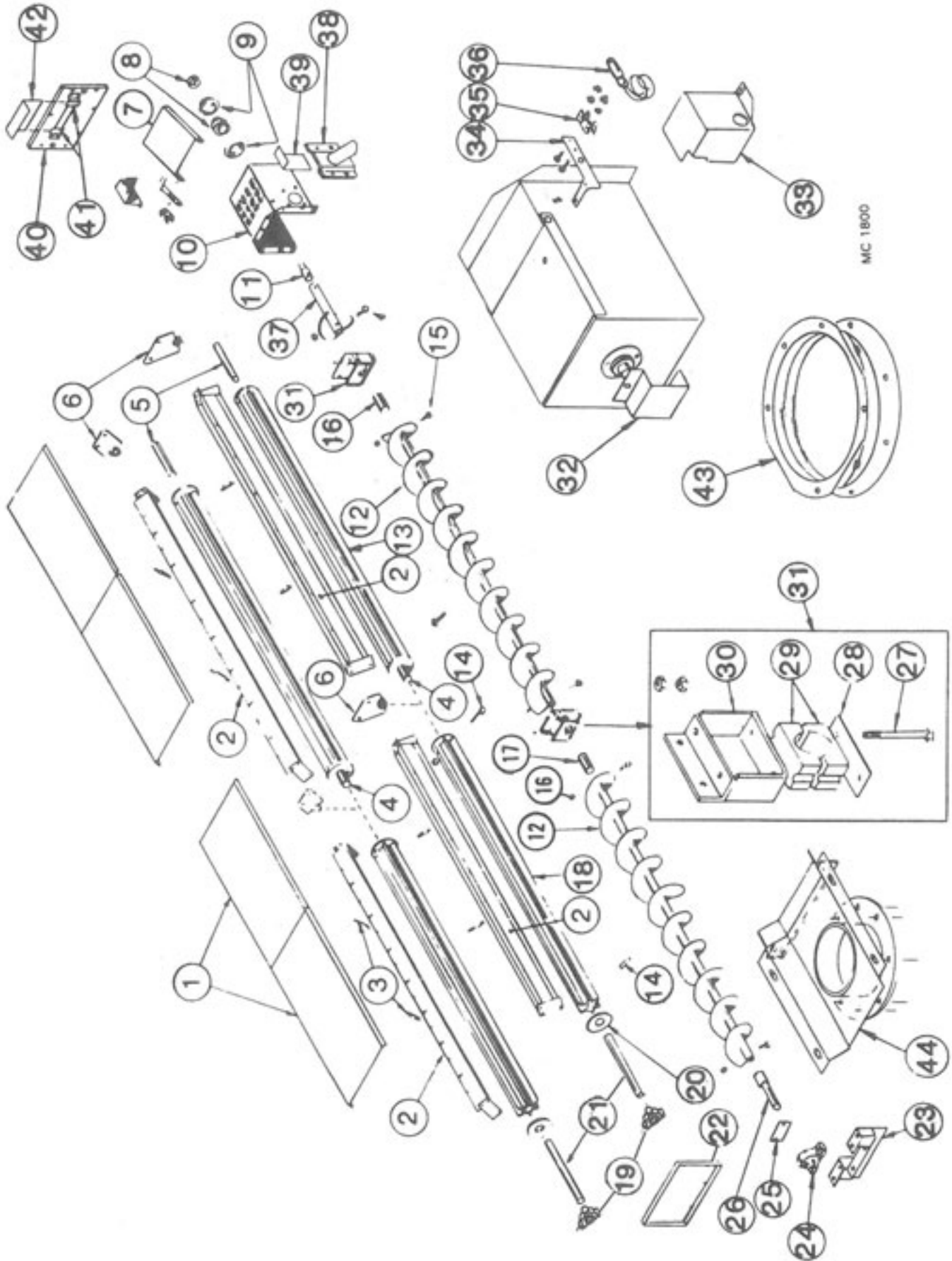
# 570 METERING ROLLS AND UNLOAD AUGER

Ref.	Part No.	Qty.	Description	Ref.	Part No.	Qty.	Description
1	128 2890	4	Unload Auger Cover	12	128 0244	2	Unload Auger Section 10" (25.4cm)
	001 8111	8	5/16-18 (7.9mm) Clip Nut	13	121 1082	2	Rear Metering Roll Assembly (Incl. shafts)
	001 8114	8	5/16-18 x 3/4" (7.9 x 19mm) Wing Screw	14	000 8114	2	5/16-18 x 2 1/2" (7.9 x 63.5mm) Capscrew
	000 8173	12	5/16" (7.9mm) Flatwasher		000 8222	2	5/16" (7.9mm) Lockwasher
	000 8169	4	5/16-18 (7.9mm) Flanged Locknut		000 8159	2	5/16-18 (7.9mm) Hex Nut
2	128 0225	4	Inner Screen Mount	15	000 8229	8	3/8-16 x 2 3/4" (9.5 x 70mm) Capscrew-Grd. 5
	001 8202	18	5/16-18x3/4" (7.9x19mm) Hex Washer Hd. Bolt #5		000 8205	8	3/8" (9.5mm) Top Lock Flange Nut
	000 8169	18	5/16-18 (7.9mm) Flanged Locknut	16	128 5618	1	1-5/16 x 9 3/8" (49.2mm x 23.8cm) Unload Auger Link
3	128 8958	8	Support Rod 3/8" x 4 3/8"				
	000 8173	8	5/16" (7.9mm) Flatwasher	17	128 0244	1	Front Unload Auger 10" (25.4cm)
	000 8168	24	3/8-16 (9.5mm) Flanged Locknut	18	128 5784	2	Front Metering Roll
4	121 5043	2	Rear Metering Roll Shaft - 1 1/4 x 7" (3.2 x 19cm)	19	001 6016	2	1 1/4" (31.75mm) 3 Bolt Flange Bearing S/N #57386 and Up
5	121 5042	2	Rear Metering Roll Stub Shaft - 1 1/4 x 5" (3.2 X 12.7cm) (press fit in metering roll)		000 8120	6	3/8-16 x 1" (9.5x25.4mm) Round Truss Hd. Bolt
6	128 1063	4	Metering Roll Brg. w/Bronze Bushing		000 8205	6	3/8-16 (9.5mm) Top Lock Flange Nut
	001 8202	8	5/16-18 x 3/4" Hex Washer Head Bolt #5	20	121 4438	4	Metering Roll Washer-11 Gauge
	000 8169	8	5/16-18 (7.9mm) Flanged Locknut		128 4970	4	Metering Roll Washer-16 Gauge
7	128 4712	1	Over Load Door	21	128 5054	2	Front Metering Roll Shaft - 1 1/4" x 6 1/4" (31.75 x 15.9cm)
	001 8210	2	3/8-16x3/4" (9.5x19mm) Hex Washer Head Bolt #5	22	128 2894	1	Base Panel Access Door 17 1/2 x 10 1/2" (44.5 x 27cm)
	000 8205	2	3/8-16 (9.5mm) Top Lock Flanged Nut		001 8284	14	5/16-12 x 1/2" (7.9 x 12.7mm) Self Tapping Screw
	001 6003	1	1 1/4" (31.75mm) Bearing w/Lock Collar	23	128 0247	1	Unload Auger Front Plate
	001 6004	2	1 1/4" (31.75mm) Bearing Flangette		001 8210	4	3/8-16 x 3/4" (9.5 x 19mm) Hex Washer Head Bolt #5
	001 8209	3	3/8-16x1" (9.5x25.4mm) Hex Washer Hd. Bolt #5		000 8168	4	3/8-16 (9.5mm) Flanged Locknut
	000 8168	3	3/8-16 (9.5mm) Flanged Locknut	24	001 6011	1	1-7/16" (36.5mm) Bore Pillow Block Bearing
10	128 0345	1	Unload Auger Discharge Round (Front Unload - See Note 1)		001 8299	2	1/2-13 x 1 3/4" (12.7 x 44.5mm) Capscrew - Grd. 8 w/Nylock
	001 8202	6	5/16-18 x 3/4" Hex Washer Head Bolt #5		001 8257	2	1/2" (12.7mm) SAE Flatwasher
	000 8169	6	5/16-18 (7.9mm) Flanged Locknut		000 8163	2	1/2-13 (12.7mm) Hex Nut
	000 8137	2	1/2-13 x 1 1/4" (12.7 x 31.75mm) Hex Bolt #5				
	000 8180	2	1/2-13 (12.7mm) Locknut				
	000 8163	2	1/2-13 (12.7mm) Hex Nut				
11	124 5611	1	Unload Auger Output Shaft (Front Unload - See				

NOTE 1: Dryers w/Front Unload - Ref. 10, use 127 4431 rear cover plate; Ref. 11, use 128 5994 output shaft.

Continued on next page

# 570 METERING ROLLS AND UNLOAD AUGER

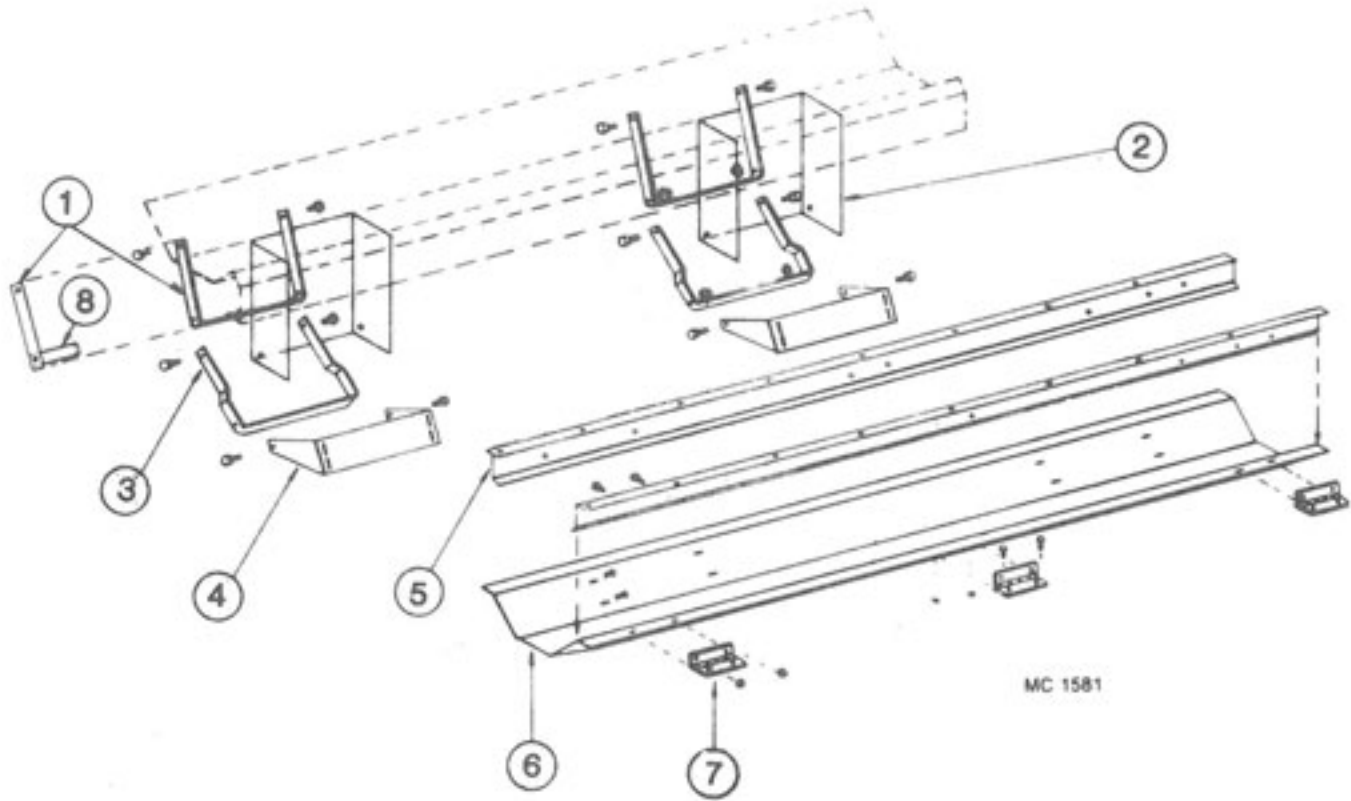


MC 1800

## 570 METERING ROLLS AND UNLOAD AUGER

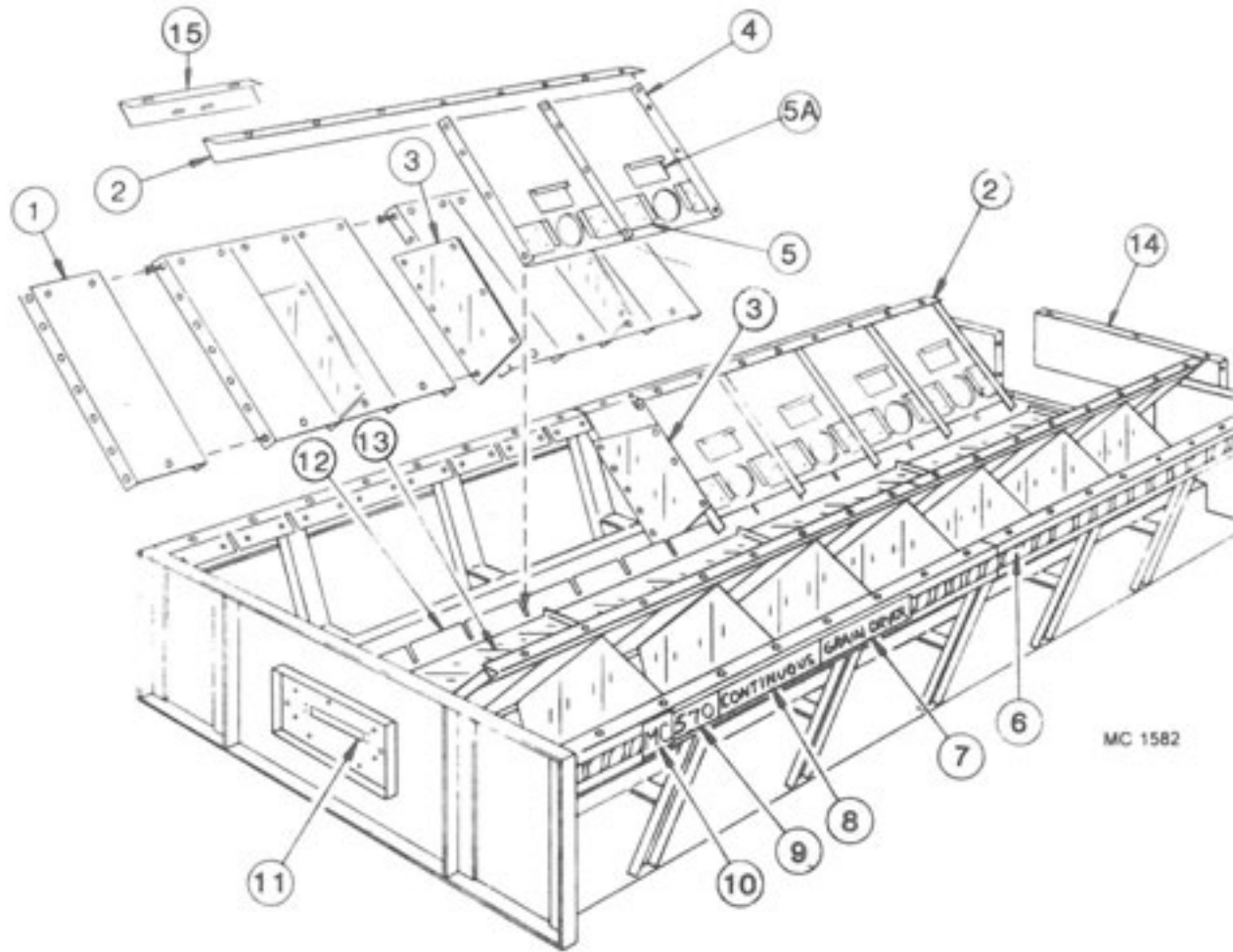
Ref.	Part No.	Qty.	Description
25	128 3008	1	Front Seal Plate
	000 8184	4	8-18 x 1/2" (12.7mm) Sheet Metal Screw
26	124 5610	1	Unload Auger Input Shaft
27	001 8168	2	1/2-13 x 4 1/2" (12.7 x 114.3mm) Capscrew - Grd. 5
	000 8180	2	1/2" (12.7mm) Lockwasher
	000 8163	4	1/2-13 (12.7mm) Hex Nut
28	128 4250	1	Unload Auger Mid Brg. Support
29	128 6020	1	Wood Brg. 1-5/16" (49.2mm) (2 Halves)
30	128 0287	1	Unload Auger Brg. Brkt.
	000 8137	2	1/2-13 x 1 1/4" (12.7 x 31.75mm) Capscrew - Grd. 5
	000 8180	2	1/2" (12.7mm) Lockwasher
	000 8163	2	1/2-13 (12.7mm) Hex Nut
31	122 1007	2	Unload Auger Brg. Kit (Incl. Ref. 27 thru 30 in quantities reqd. for one brg.)
32	128 3011	1	Stub Shaft Guard
33	128 4896	1	Shut-Off Switch Cover
	001 8284	2	5/16-12 x 1/2" (7.9 x 12.7mm) Self-Tapping Screw
34	128 2937	1	Switch Mount
35	120 6801	1	Switch Mount Clip
	000 8282	2	6-32 x 1/4" (6.35mm) Machine Screw
	000 8185	2	6-32 Flanged Locknut
36	120 6800	1	Shut Off Switch
37	128 0309	1	Standard Auger Weld
38	128 034	1	Grain Sampler
39	128 2842	1	Slide Gate Door - Sampler
40	128 2954	1	Base Panel Access Door w/Slot
41	128 2885	2	Access Door Bracket
42	128 2887	1	Access Door Slot Cover
43	128 0343	1	Discharge Ring 10" (25.4cm)
44	128 0331	1	10" (25.4cm) Front Unload Auger Weldment (Optional)

## UNLOAD AUGER PANS



Ref.	Part No.	370 Qty	570 Qty	Description
1	128 2029	2	4	Auger Dump Arm - Upper
2	128 8355	2	4	Warning Decal (not shown)
3	128 2030	2	4	Auger Dump Arm - Lower
4	128 2751	2	4	Bottom Link Pivot Base
5	128 2673	2	4	Pan Hinge Angle
6	128 2752	-	1	Front Auger Dump Pan - 570
	128 0351	1	1	Rear Auger Dump Pan w/Monitor Cut-Out
	128 3015	1	1	Monitor Cut-Out Seal Plate
7	128 8957	3	6	Hinge
8	128 2032	2	4	Auger Dump Arm Handle

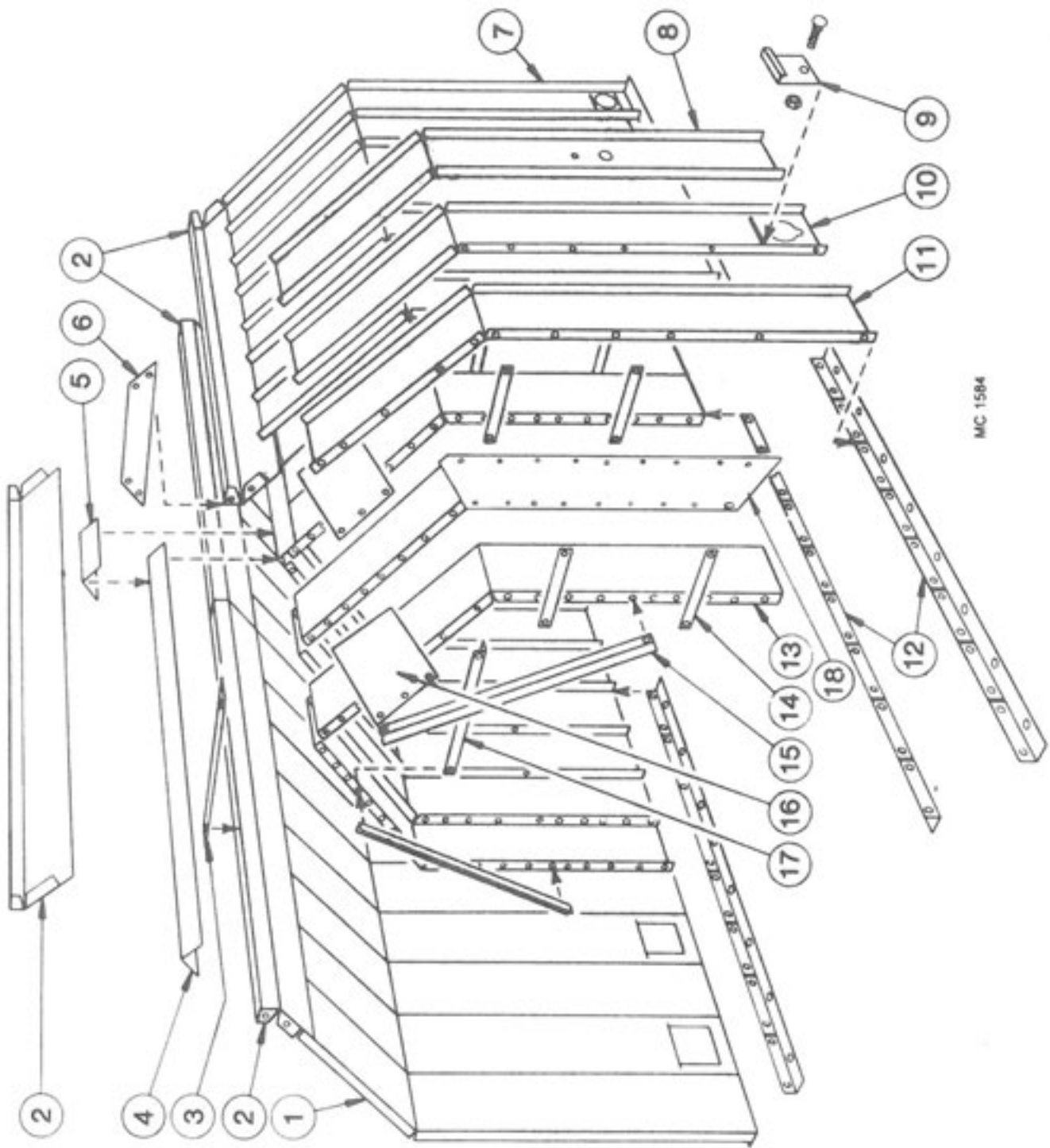
## BASE SCREENS



MC 1582

370 570				370 570			
Ref. Part No.	Qty	Qty.	Description	Ref. Part No.	Qty	Qty.	Description
1	-	-	Lower Outer Screen	10	128 8300	2	2 M-C Decal - 5" x 4-1/2"
	123 5215	16	Standard Aluminum - 3/32"	11	128 2954	1	Base Panel Access Door w/Slot
	127 2945	16	Small Seed (Galv.)		001 8284	7	5/16-12x 1/2" (7.9x Self-Tapping Screw
2	128 2739	2	Lower Screen Mount Angle				5/16-18 x 3/4" (7.9x Hex Washer Head
3	128 2855	6	Lower Screen Stiffener	12	128 0350	2	4 Inner Screen Mount
4	-	-	Lower Inner Slope Screen w/Clean-Out (24" wide)		001 8202	12	18 5/16-18 x 3/4" (7.9x Hex Washer Head
	124 2000	8	Galvanized (Std.)		000 8169	12	18 5/16-18 Flanged Lock
	124 2001	8	Small Seed (Galv.)	13	128 2890	2	4 Unload Auger Cover
5	124 2866	16	Slope Door Retainer		001 8111	4	8 5/16-18 Clip Nut
	000 8244	48	8-18 x 1/2" (12.7mm) Hex Head Sheet Screw		001 8114	4	8 5/16-18 x 3/4" Wing
5A	128 3003	8	Slope Door		000 8173	4	8 5/16" Flatwasher
6	128 8310	7'	24' Red & Yellow Stripe Decal - 2 1/2" (6.35cm)	14	128 4570	1	1 Base Filler Panel-37x
7	128 8309	2	"Grain Dryer" Decal		001 8209	12	12 3/8-16x1" (9.5x25.4m Washer Head Bolt
8	128 8308	2	"Continuous" Decal		000 8168	12	12 3/8-16 Flanged Lockr
9	128 8376	-	"570" Base Decal	15	120 3070	-	2 Seal Angle
	128 8374	2	"370" Base Decal				

# UPPER SCREENS



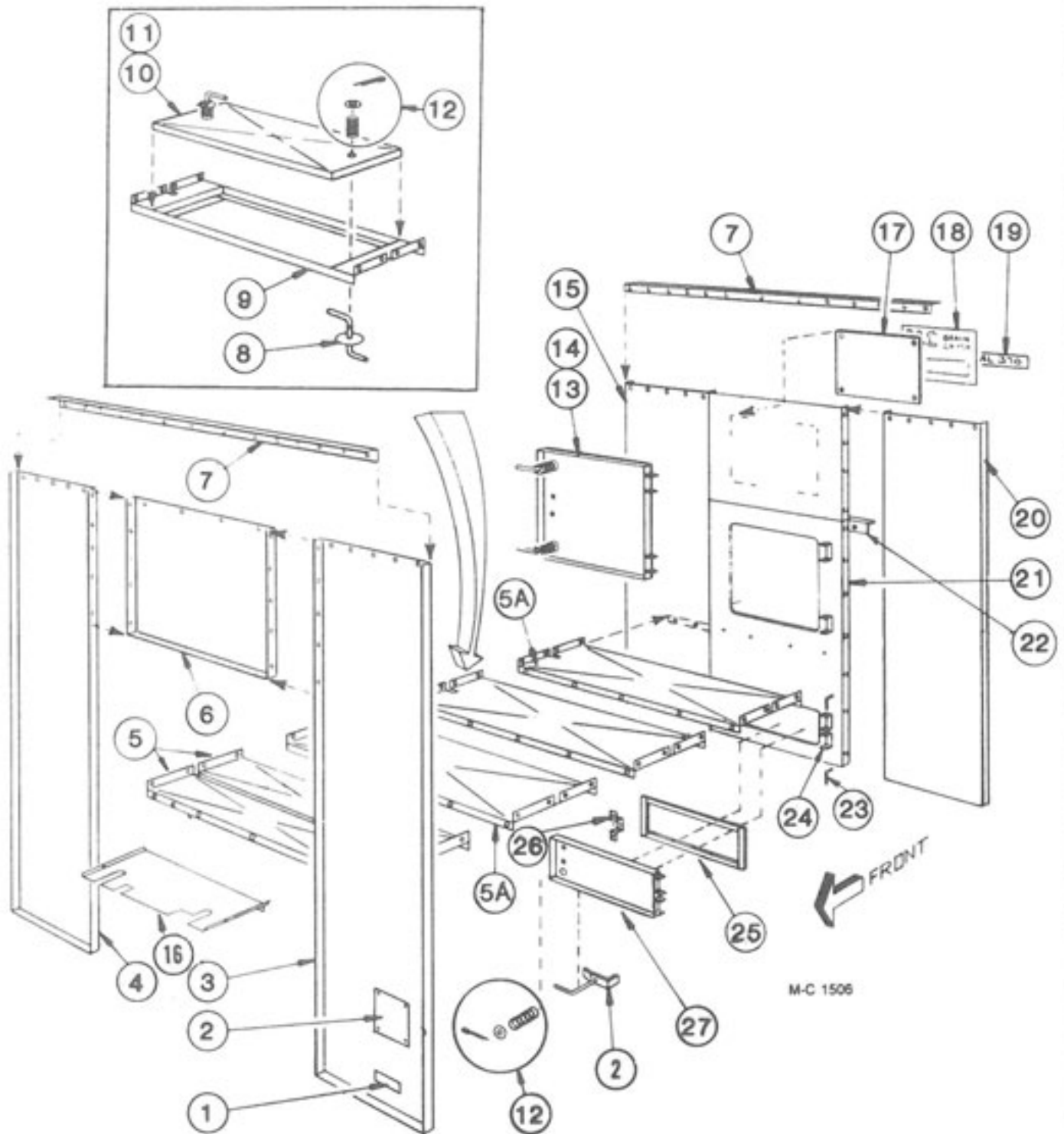
MC 1584



## UPPER SCREENS

Ref.	Part No.	370 570		Description
		Qty	Qty.	
1	----	-	-	<b>Outer End Screen w/o Quick Drain</b>
	021 2946	2	2	Galvanized (Std.) 3/32" (2.38mm)
	127 2967	2	-	Small Seed (Galv.) 1/16" (1.59mm)
	123 5213	2	2	Aluminum 3/32" (2.38mm)
2	129 2832	2	4	Hopper Joiner Angle
3	129 2947	1	2	Stiffener Strap
4	021 2950	1	2	Hopper Cap
5	128 3075	-	1	Seal Angle
6	129 2831	-	1	Joiner Plate
7	----	-	-	<b>Outer End Screen w/Quick Drain</b>
	128 3002	2	2	Galvanized (Std.)
	127 2963	-	-	Small Seed (Galv.)
	123 5210	2	2	Aluminum
8	----	-	-	<b>Moisture Control Screen</b>
	021 2947	1	1	Galvanized (Std.)
	127 2966	-	-	Small Seed (Galv.)
9	123 5214	1	1	Aluminum
	----	-	-	<b>Quick Drain Door</b>
	127 2950	8	16	Galvanized (Std.)
	127 2974	-	16	Small Seed (Galv.)
	000 8310	8	16	3/8-16 x 3/4" (9.5 x 19mm) Stainless Carriage Bolt
10	000 8168	8	16	3/8-16 (9.5mm) Flanged Locknut
	----	-	-	<b>Outer Screen w/Quick Drain</b>
	128 3001	6	14	Galvanized (Std.)
	127 2965	-	14	Small Seed (Galv.)
11	123 5212	6	14	Aluminum
	----	-	-	<b>Outer Screen w/o Quick Drain</b>
	021 2945	5	13	Galvanized (Std.)
	127 2964	-	14	Small Seed (Galv.)
12	123 5211	5	13	Aluminum
	125 2732	4	8	Screen Mount Angle
13	----	-	-	<b>Inner Screen</b>
	021 2949	16	32	Galvanized (Std.)
	127 2968	-	32	Small Seed (Galv.)
14	121 3007	28	60	Stiffener Strap
15	128 2663	6	14	Inner Brace
16	128 3072	6	14	Peak Screen Stiffener
17	021 2600	3	7	Inner Cross Tie
18	128 3076	-	2	Divider Panel

# END PANELS AND FLOOR PANELS

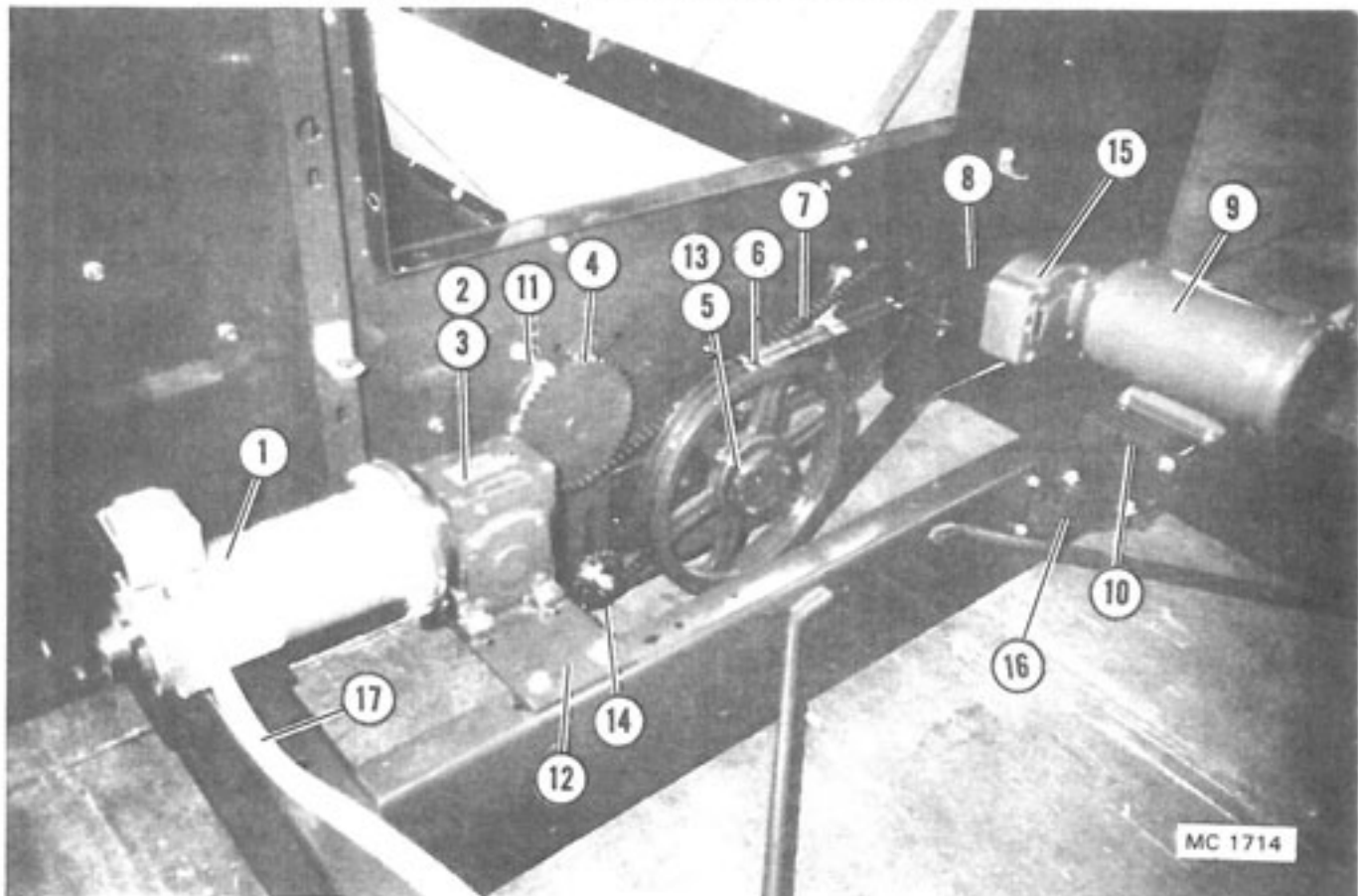


## END PANELS AND FLOOR PANELS

Ref.	Part No.	370 570		Description
		Qty	Qty.	
1	121 8310	1	1	"Made in USA" - Decal
2	121 8901	3	3	Latch and Handle
3	124 2836	1	1	Left Front Panel
4	124 2835	1	1	Right Front Panel
5	124 2848	2	2	12" (30.5cm) Unit Floor Panel
5A	121 2928	2	6	Unit Floor Panel
6	124 2847	1	1	Panel Above Orifice
7	021 2602	2	2	End Panel to Hopper Joiner Angle
8	121 0302	2	2	Latch and Handle
9	121 0299	1	2	Heat Chamber Door Frame
10	121 1113	1	2	Heat Chamber Door Ass'y (Incl. Ref. 8, 11 & 12)
11	121 2970	1	2	Heat Chamber Door Panel
12	001 8256	-	-	Spring - 5/8" ID x 2" (15.9 x 51mm)
	000 8174	-	-	3/8" (9.5mm) Flatwasher
	000 8199	-	-	1/8" x 1" (3.2 x 25.4mm) Cotter Pin
13	128 1183	1	1	Upper Rear Door Ass'y (Incl. Ref. 12, 14, 24, 25, 26 & 28)
14	128 2957	1	1	Upper Rear Door Panel
15	021 2832	1	1	Right Rear End Panel
16	124 2846	1	1	Burner Unit Floor
17	128 2999	1	1	Decal Mount Plate
18	128 8331	1	1	Large Decal - See note
19	128 8373	2	-	"370" Model Decal
	128 8375	-	2	"570" Model Decal
20	021 2833	1	1	Left Rear End Panel
21	128 2772	1	1	Rear Door Panel 96 x 37" (244 x 92cm)
22	124 4463	1	1	Brace, Rear Door Panel
23	128 5201	4	4	Hinge Pin
24	128 2740	4	4	Door Hinge
	000 8212	16	16	1/4-20 X 1/2" (6.35 x 12.7mm) Truss Hd. Screw
	000 8167	16	16	1/4-20 (6.35mm) Flanged Locknut
25	121 8966	10'	10'	Weather Stripping (Order ft. required)
26	121 2887	1	1	Door Handle
27	128 3009	1	1	Lower Door Rear Panel

**NOTE:** This decal is imprinted "Model 975." Order one of Ref. 19 to be placed over "Model 975."

## Unload Auger SCR Drive Motor and Gear Box

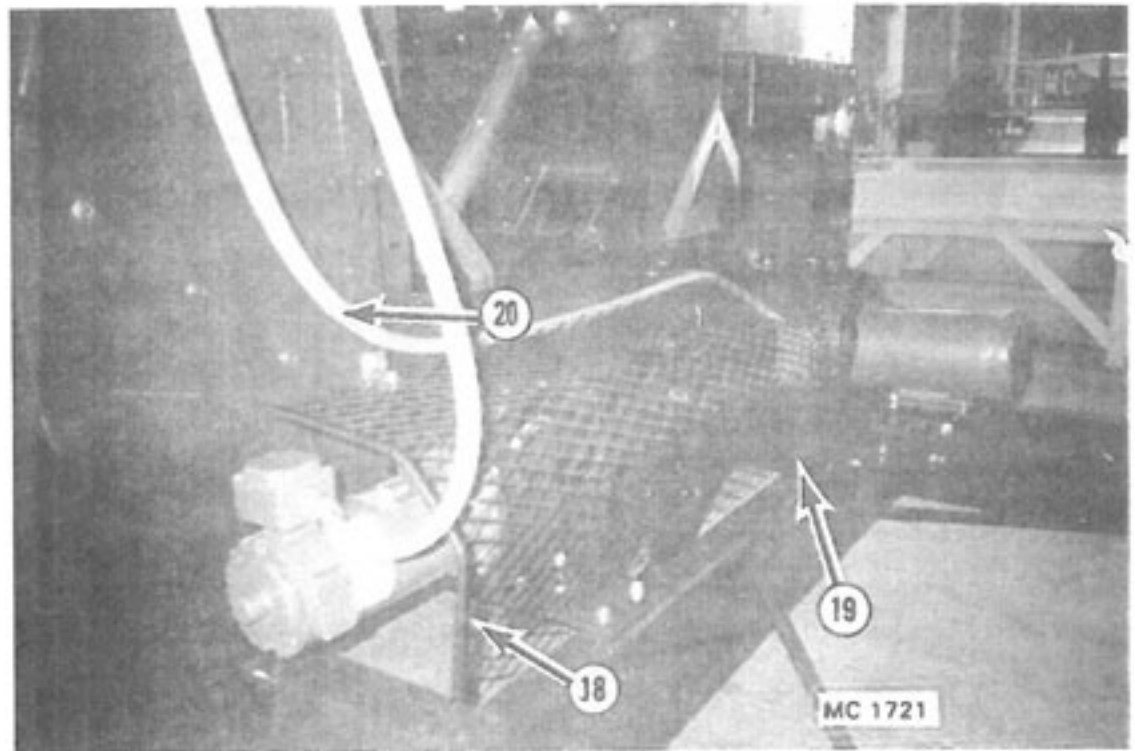


Ref.	Part No.	Qty.	Description
1	124 6837	1	DC Motor - 1/3 HP
	122 8613	-	DC Motor Brush
2	124 6624	1	SCR Gear Box (Incl. 3/16" x 1" (4.76x25.4mm) Key - 001 5110)
	128 8947	1	Pint of Mobil SHC 634 Oil
	001 8212	4	5/16x1 1/4" Capscrew-Washer Hd.
	000 8174	4	3/8" (9.5mm) Flatwasher
	000 8168	4	3/8" (9.5mm) Flanged Locknut
3	-----	-	SCR Gear Box Sprocket
	128 6427	1	RC-40 10T x 3/4" ID - 370/570
4	-----	-	Metering Roll Sprocket
	128 6406	2	RC-40 42T x 1 1/4" ID - 370/570
	000 8298	2	Woodruff Key 1/4" x 3/4" (6.35x19mm)
5	021 6201	1	Pulley - 2B x 13.6 SK
	001 5130	1	Key - 3/8" x 1" (9.5x25.4mm)
6	021 6100	1	B-65 Belts (Matched Set-2)
7	128 6316	1	Chain - RC-40 x 152 Pitch
	002 6309	-	Connecting Link
8	121 6203	1	Pulley - 2B - 3-3/16" OD - 3/4" (22.2x80.96mm) Bore
	001 5112	1	Key - 3/16" x 1 1/4" (4.8x35mm)

Ref.	Part No.	Qty.	Description
9	124 6627	-	1.5HP 10 230V Motor
	124 6626	-	1.5HP 30 230/460V Motor
	124 6628	-	1.5HP 30 575V Motor
	128 1810	1	Motor to Cabinet Wire Assembly
	000 8110	1	5/16-18x1 1/2" (7.9x38mm) Capscrew
	001 8213	3	5/16-18x1" (7.9x25.4mm) Capscrew
	000 8173	4	5/16" (7.9mm) Flatwasher
	000 8169	4	5/16-18 Flanged Locknut
10	124 4214	1	Unload Auger Motor Mount
	001 8209	2	3/8-16 x 1" (9.5 x 25.4mm) Capscrew-Washer Hd.
	001 8210	3	3/8-16 x 3/4" (9.5 x 19mm) Capscrew-Washer Hd.
	001 8132	1	3/8-16 x 4" (9.5x102mm) "J" Bolt
	000 8174	5	3/8" (9.5mm) Flatwasher
	000 8168	5	3/8-16 (9.5mm) Flanged Locknut
11	001 6016	2	1 1/4" (31.8mm) 3 Bolt Flange Bearing
12	128 0367	1	SCR Gear Box Mount
	001 8210	4	3/8-16 x 3/4" (9.5 x 19mm) Capscrew-Washer Hd.
	000 8174	4	3/8" (9.5mm) Flatwasher
	000 8168	4	3/8-16 (9.5mm) Flanged Locknut

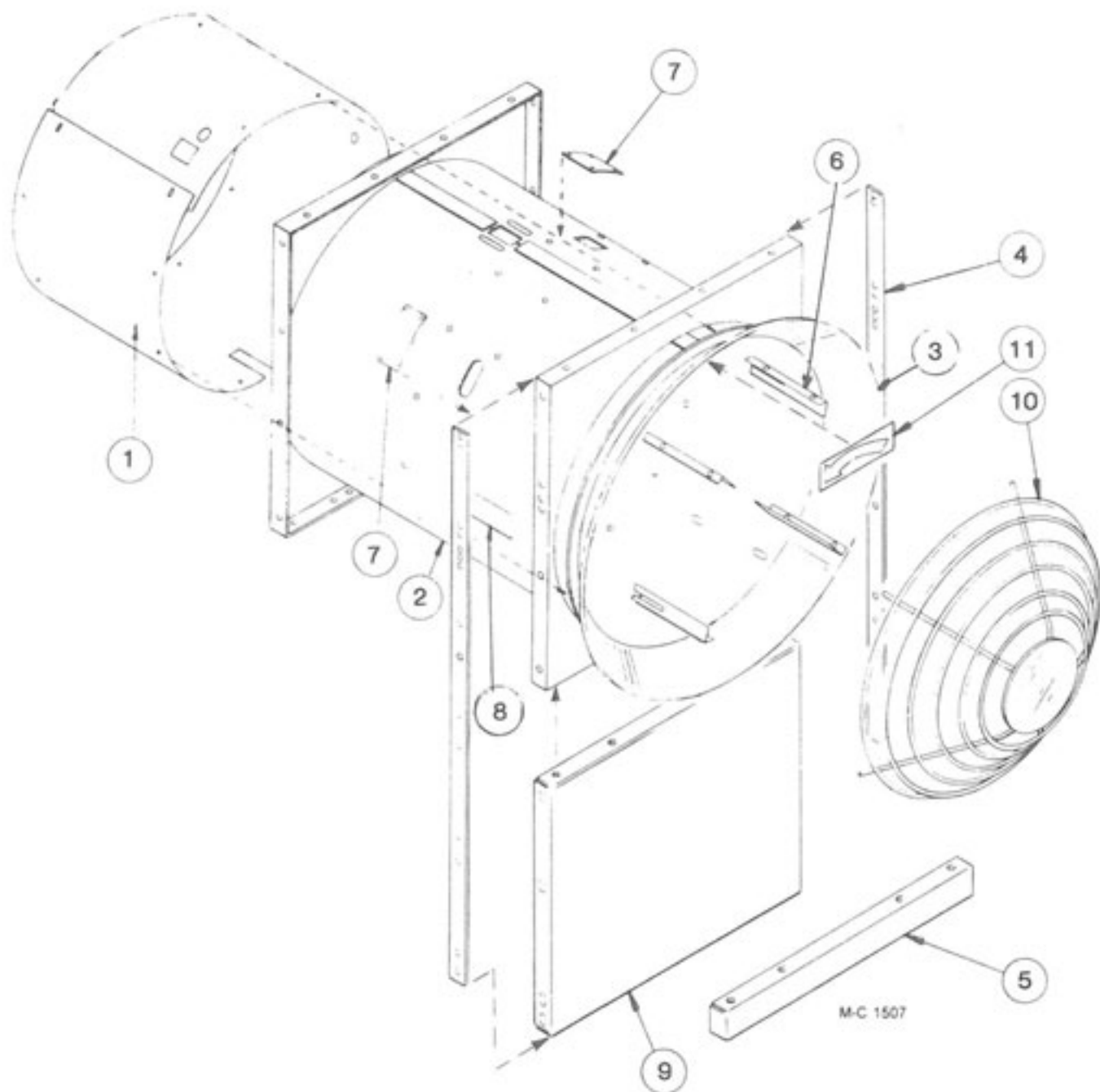
Continued on next page

## Unload Auger SCR Drive Motor and Gear Box



Ref.	Part No.	Qty.	Description
13	001 6202	1	SK Bushing - 1-7/16" (36.5mm) I.D. (Incl. capscrews)
14	128 6414	1	Idler Sprocket 18T x 1/2" (12.7mm)
15	124 6620	1	Gear Box - Unload Auger Motor (370/570)
16	124 4485	1	Discharge Motor Mount Bracket
17	128	1	SCR Motor to Cabinet Flexible Conduit 1/2" x 43" (9.5mm x 109cm) with 45° Elbow & Straight Connectors
18	128 0370	1	Drive Guard - Wire
	001 3302	2	Angle Clip
	000 8202	4	5/16-16 x 3/4" (7.9 x 19mm) Washer Head Bolt
	000 8173	2	5/16" (7.9mm) Flatwasher
	001 8184	2	5/16" (7.9mm) Clip Nut
	000 8169	2	5/16" (7.9mm) Whiz Locknut
19	121 8957	AR	Rubber Guard Edge
20		1	Unload Auger Motor to Cabinet Flexible Conduit with (2) Straight Connectors 1Ø 1/2" x 40" (9.5mm x 96cm) 3Ø 1/2" x 40" (12.7mm x 96cm)

## FAN ORIFICE AND ORIFICE LINER

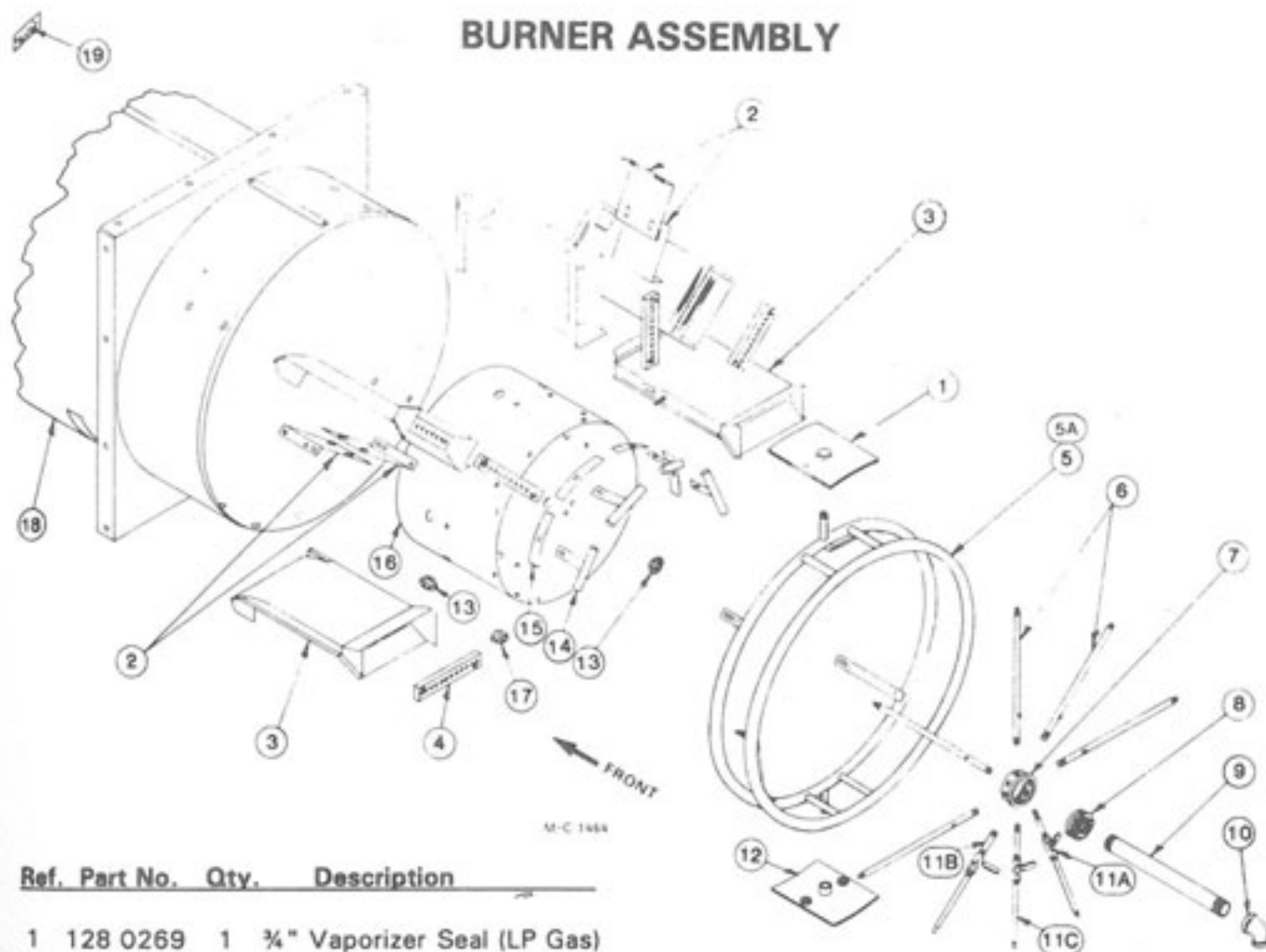


## FAN ORIFICE, ORIFICE LINER AND GUARD

Ref. Part No.	Qty.	Description
1	128 4725	1 Orifice Liner
2	128 0267	1 Fan Orifice Weldment
3	121 8998	1 Intake Flange Spinning
4	128 3465	2 Fan Housing Brace
5	128 0272	1 Orifice Support Weldment

Ref. Part No.	Qty.	Description
6	128 2756	4 Air Flow Straightener
7	121 2978	2 Orifice Cover Plate
8	128 8363	1 Vaporizer Adj. Decal (LP Gas)
9	128 4570	1 Spacer Panel
10	121 8956	1 Fan Guard
11	121 8301	1 Counterclockwise Arrow

# BURNER ASSEMBLY



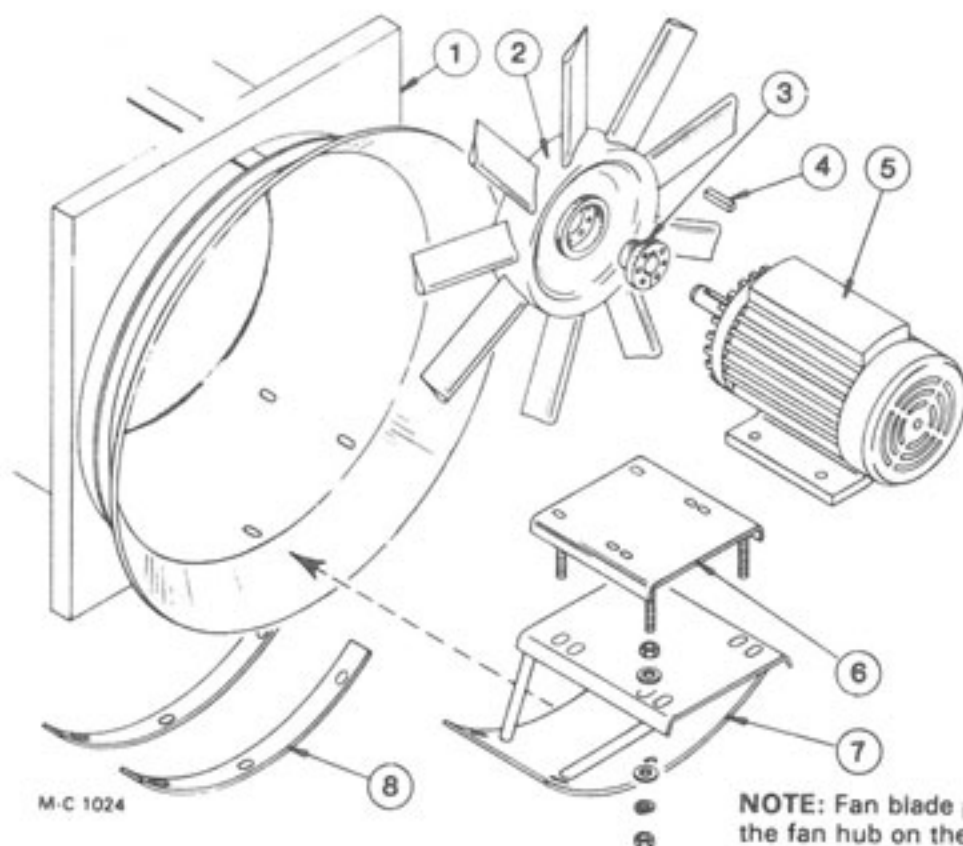
**Ref. Part No. Qty. Description**

1	128 0269	1	3/4" Vaporizer Seal (LP Gas)
2	121 4867	8	Air Chamber Mtg. Brkt.
	000 8106	8	5/16"-18 x 3/4" Capscrew
	000 8103	16	5/16"-18 x 1/2" Truss Hd. Screw
	000 8173	8	5/16" Flatwasher
	000 8169	24	5/16-18 Flanged Locknut
3	121 1241	8	Burner Unit (Incl. Ref. 4)
	000 8169	8	5/16-18 Flanged Locknut
4	121 5988	8	Burner Insert
	000 8261	16	1/4 x 1" Sheet Metal Screw
5	128 0304	1	Vaporizer Ring (570)
5A	128 0294	1	Vaporizer Ring (370) Single Ring (Not Shown)
	000 8104	4	5/16"-18 x 3/4" Truss Hd. Screw
	000 8169	4	5/16-18 Flanged Locknut
6	-----	-	Burner Lead Tube
	124 5701	5	1/8" Orifice - LP Gas (370)
	121 5987	5	3/16" Orifice - Nat. Gas (570)
	128 5926	5	5/32" Orifice - Nat. Gas (370)
	128 5926	5	5/32" Orifice - LP Gas (570)
7	121 5501	1	Burner Head
8	121 5738	1	3" to 1 1/4" Reducing Bushing
9	123 8073	1	1 1/4" x 6 1/2" Std. Nipple

**Ref. Part No. Qty. Description**

10	123 8049	1	1 1/4" to 3/4" - 90° Std. Reducing Elbow (LP Gas)
11A	127 8044	3	3/8" Valve Cock w/Handle
11B	128 7512	3	3/8" Std. Blk. Pipe 4 1/2"
11C	128 5920	3	1/8" Orifice - LP Gas (370)
	128 5925	3	3/16" Orifice - Nat. Gas (570)
	128 5924	3	5/32" Orifice - Nat. Gas (370)
	128 5924	3	5/32" Orifice - LP Gas (570)
12	128 0270	1	1/2" Vaporizer Seal
13	128 6858	3	3/4" Steel Knock-Out Plug
14	121 0316	4	Ignition Tube
	000 8104	4	5/16"-18 x 3/4" Truss Hd. Screw
	000 8169	4	5/16-18 Flanged Locknut
15	121 4468	8	Burner Locator Strip
16	121 0322	1	Burner Center Tube
17	121 6917	1	1/2" Steel Knock-Out Plug
18	128 0267	1	Fan Orifice Weld.
19	121 8301	1	Counterclockwise Arrow Decal

## FAN AND FAN MOTOR MOUNT

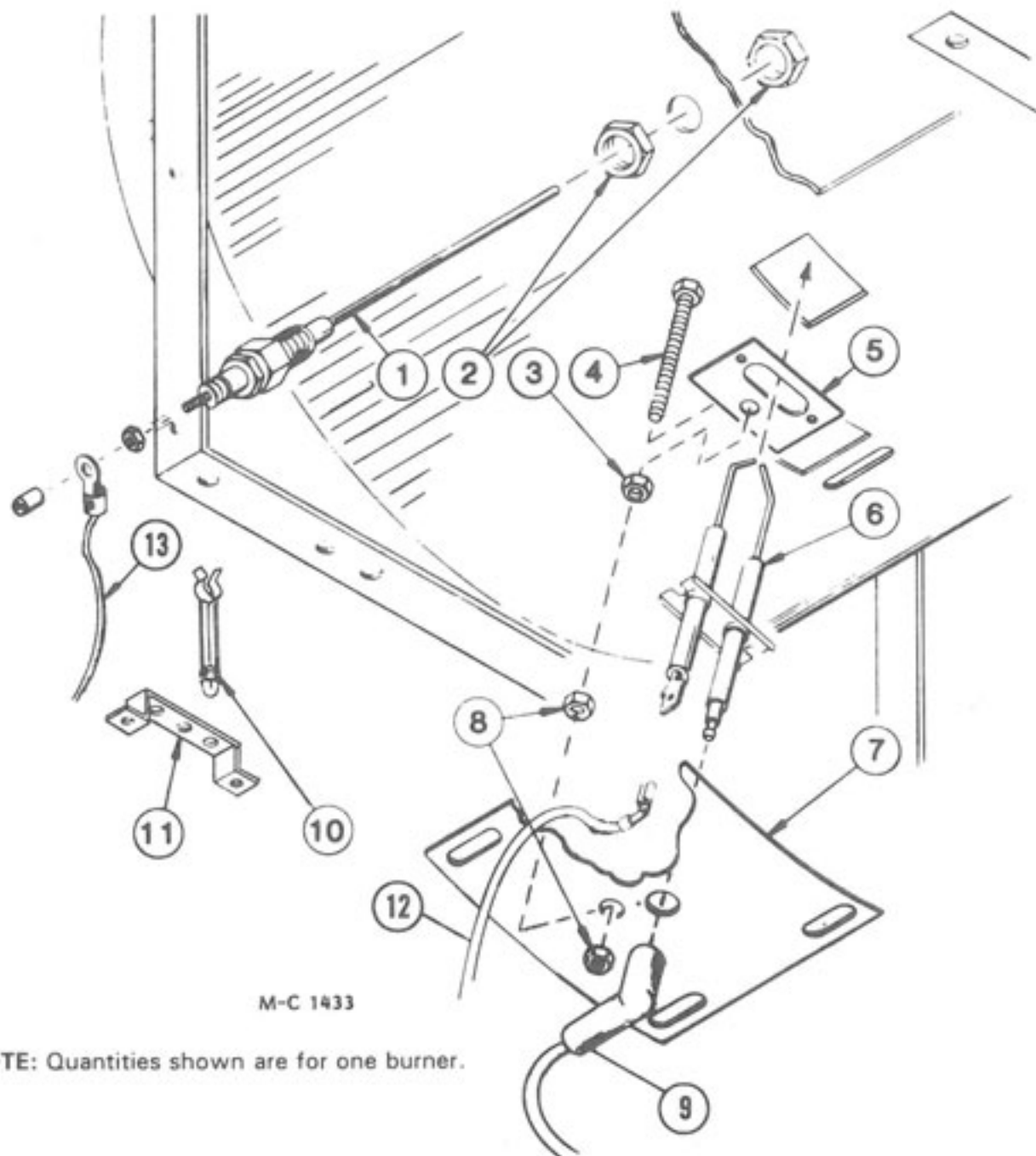


Ref.	Part No.	Qty.	Description
1	128 0267	1	Fan Orifice Weld
2	---	---	Fan
	128 9044	1	370 (9 blade 18°) w/bushing
	128 9045	1	570 (9 blade 27°) w/bushing
3	121 6239	-	"SK" Bushing - 1 3/8" (34.9mm) Bore (10HP motors)
	121 6229	-	"SK" Bushing - 1 5/8" (41.28mm) Bore (20HP motors)
	121 8117	3	5/16-18 x 2" (7.9 X 50.8mm) Socket Hd. Capscrew-Grd. 5
4	001 5124	1	Key-5/16"x2 3/8" (7.9 x 60.3mm) (10HP motor)
	001 5139	1	Key - 3/8" x 3" (9.5x76.2mm) (20HP motor)
5	---	---	Fan Motor
	124 6818	1	10HP 1Ø 230V Motor (370)
	201 6818	1	10HP 3Ø 230/460V Motor (370)
	124 6879	1	20HP 1Ø 230V Motor (570)
	125 6934	1	20HP 3Ø 230/460V Motor (570)

Ref.	Part No.	Qty.	Description
	000 8293	4	3/8"-16 x 1 1/2" (9.5 x 38.1mm) Capscrew Full Thread (10HP motor)
	000 8168	4	3/8"-16 (9.5mm) Flanged Locknut
	000 8139	4	1/2"-13 x 1 3/4" (12.7x44.45mm) Capscrew (20HP motor)
	000 8170	4	1/2"-13 (12.7mm) Flanged Locknut
6	128 0167	1	Motor Mt. (10HP motor)
	121 0343	1	Motor Mt. (20HP motor)
	000 8165	8	3/4"-10 (19mm) Hex Nut
	000 8177	8	3/4" (19mm) Flatwasher
	000 8182	4	3/4" (19mm) Lockwasher
7	121 0258	1	Motor Mt. Base
	000 8139	6	1/2"-13 x 1" (12.7 x 25.4mm) Carriage Bolt
	000 8170	6	1/2"-13 (12.7mm) Flanged Locknut
8	121 3356	2	Orifice Reinforcement



## ELECTRODE AND FLAME SENSING PROBE



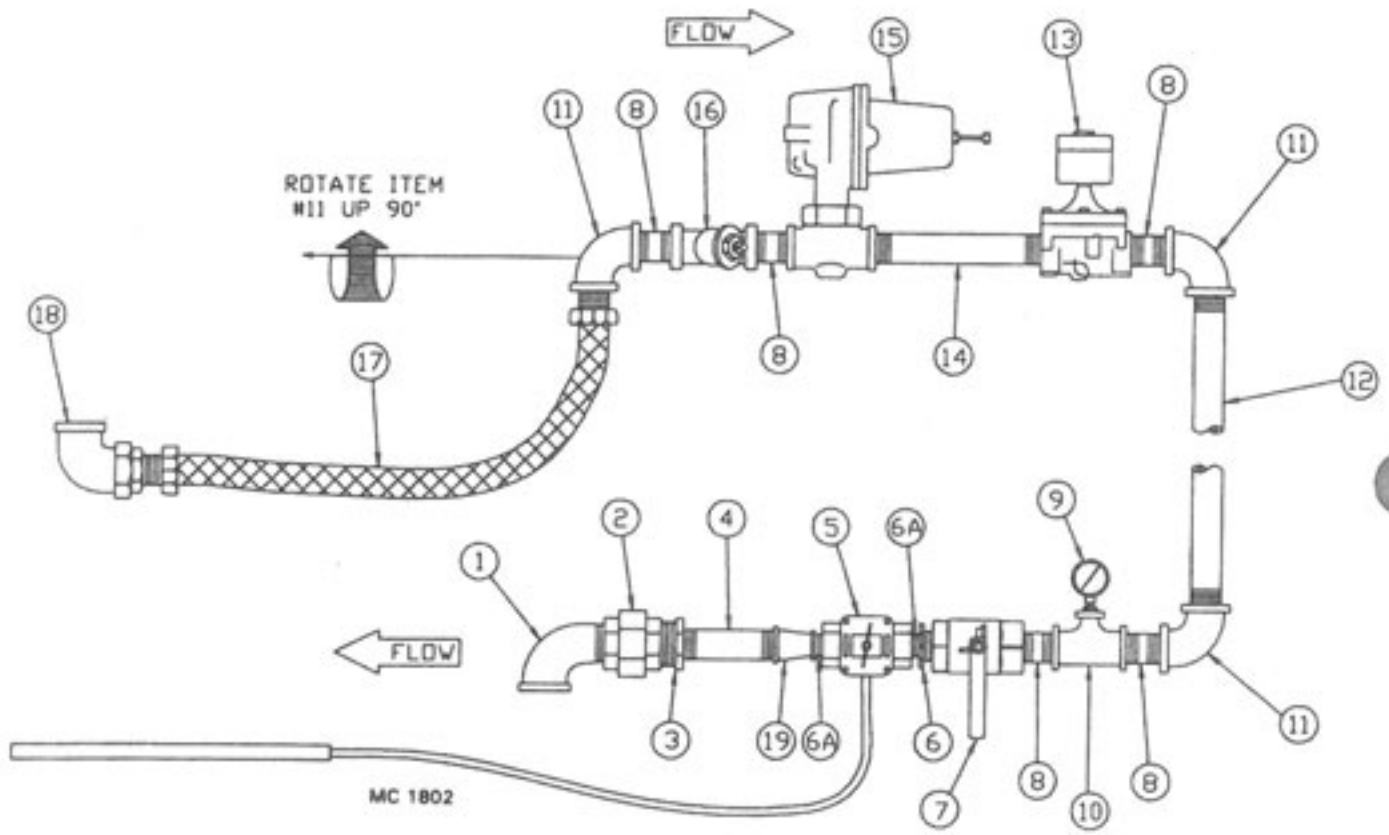
M-C 1433

**NOTE:** Quantities shown are for one burner.

Ref.	Part No.	Qty.	Description
1	124 6872	1	Flame Sensing Probe
2	121 6915	2	½" (12.7mm) Locknut
3	000 8162	1	¾-16 (9.5mm) Hex Nut
4	000 8227	1	¾-16 X 2 ¼" (9.5 x 69.9mm) Capscrew - Full Thread
5	128 2746	1	Electrode Mt. Plate
6	128 6995	1	Style 2 Electrode
	000 8186	2	6-32 x ½" (12.7mm) Machine Screw
	000 8245	2	No. 6 Lockwasher
	000 8185	2	6-32 Flanged Locknut

Ref.	Part No.	Qty.	Description
7	128 2747	1	Electrode Mt. Seal
	001 8104	4	¼-20 x ½" (6.35x12.7mm) Self-Tapping Screw
8	000 8168	2	¾-16 (9.5mm) Flanged Locknut
9	128 1910	1	Ignition Wire 36" (91.5cm) w/Boot
10	128 6989	3	Stand-Off Clip
11	128 4941	1	Wire Support Brkt. (On bottom burner)
12	124 1078	1	Low Voltage Wire Ass'y 32" (81.5cm) Black 18 ga.
13	124 1077	1	Low Voltage Wire Ass'y 48" (122cm) Red 18 ga.

# LP GAS VAPOR MANIFOLD



## LP GAS VAPOR MANIFOLD

Ref.	Part No.	Qty.	Description
1	123 8062	1	1 1/4" (31.75mm) 90° Street Elbow
2	123 8053	1	1 1/4" (31.75mm) Standard Union
3	123 8078	1	1 1/4" x 3/4" (31.75 x 19mm) Reducer Bushing
4	121 8009	1	3/4" x 3 1/2" (19mm x 8.9cm) Extra Heavy Nipple
5	121 7024	1	1/2" (12.7mm) Modulating Valve 140°-250°F (60°-121°C) P.E.
6	121 8029	1	3/4" x 1/2" (19 x 12.7mm) Reducer Bushing
6A	121 8013	2	1/2" (12.7mm) Close Nipple
7	121 7011	1	3/4" (19mm) Hand Valve
8	121 8005	3	3/4" x 1 1/2" (19 x 38.1mm) Extra Heavy Nipple
9	120 7002	1	Pressure Gauge
10	123 8092	1	3/4" x 3/4" x 1/4" (19 x 19 x 6.35mm) Standard Tee
11	121 8074	3	3/4" (19mm) 90° Standard Elbow
12	129 8037	1	3/4" x 10" (19mm x 25.4cm) Standard Nipple
13	121 7002	1	3/4" (19mm) Solenoid Valve 115V
14	121 8092	1	3/4" x 4" (19mm x 10.2cm) Extra Heavy Nipple
15	128 7005	1	LP Gas Pressure Regulator
16	121 8060	1	3/4" (19mm) Strainer
	837 658	1	3/4" (19mm) Screen Only
17	123 7033	1	3/4" x 24" (19mm x 61cm) S.S. Flexible Hose
18	128 8019	1	3/4" (19mm) Extra Heavy Union Elbow
19	128 8041	1	3/4" x 1/2" (19 x 12.7mm) Red. Coupling Extra Heavy
20	122 7014	1	Power Element 140° to 250°F (60° to 121°C) (Standard) 15 ft. (4.6m) Capillary Code "D"
	122 7002	1	Power Element 90° to 210°F (32° to 99°C) (Optional) 15 ft. (4.6m) Capillary Code "B"
	122 6844	1	Power Element 55° to 155°F (13° to 68°C) (Optional) 15 ft. (4.6m) Capillary Code "Y"

### Repair Kits and Parts for Modulating Valves, Solenoid Valves and LP Gas Pressure Regulators

#### For Modulating Valves 121 7024 & 123 7024

122 9993	Seat Kit (Incl. stem, disc holder & diaphragm)
122 7006	Diaphragm

#### For 1/2" (12.7mm) Solenoid Valve 121 7002

122 7035	Repair Kit (See note)
122 7001	Coil

#### For 1 1/4" (31.8mm) Solenoid Valve 128 7001

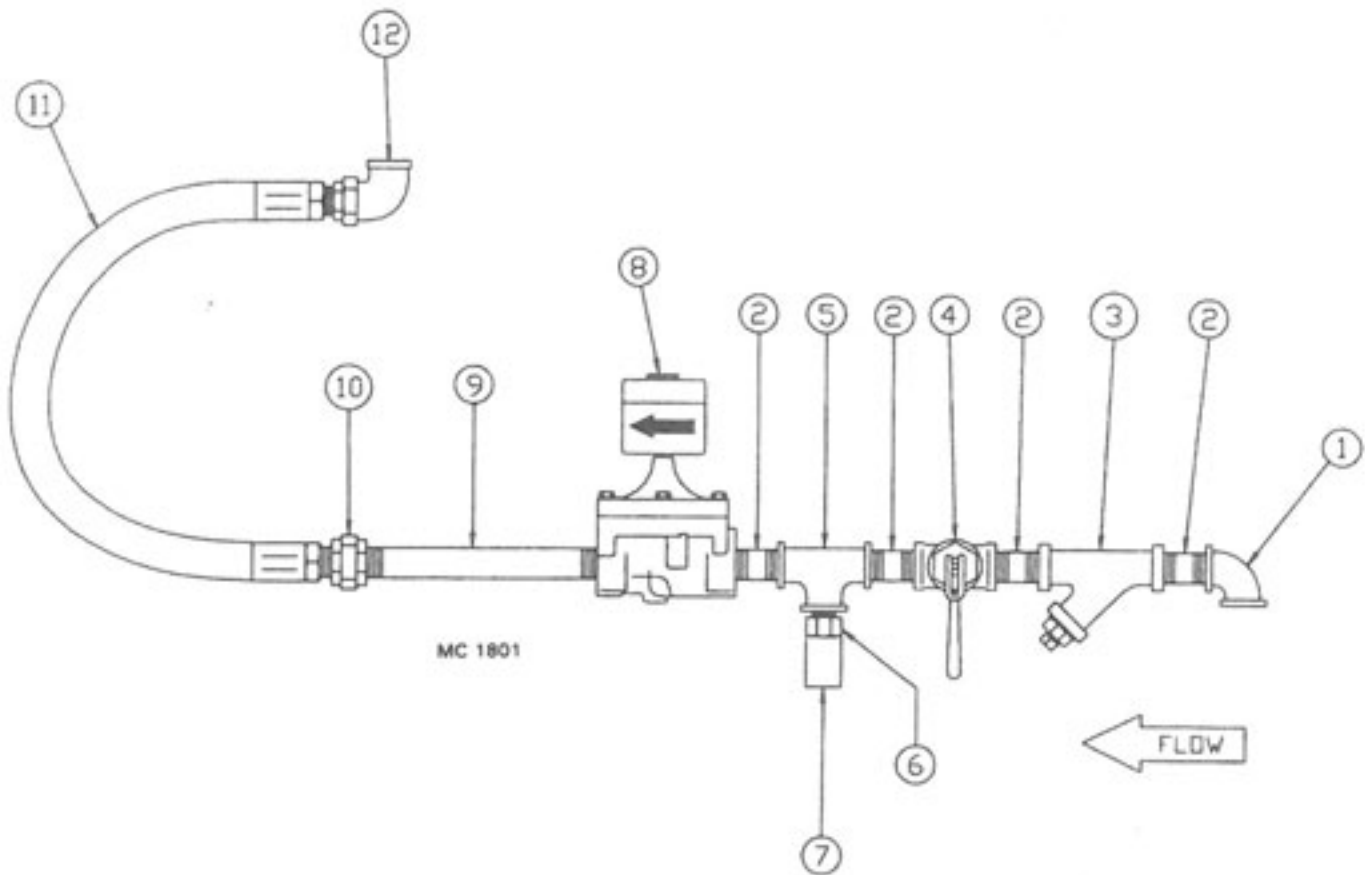
122 7034	Repair Kit (See note)
--- 4607	Coil

#### For LP Gas Pressure Regulator 128 7005

122 7043	Diaphragm (Nitrile)
122 7044	Disc Assembly
122 7045	Control Spring (Yellow)
122 7046	Stabilizer
122 7047	Diaphragm Case O Ring

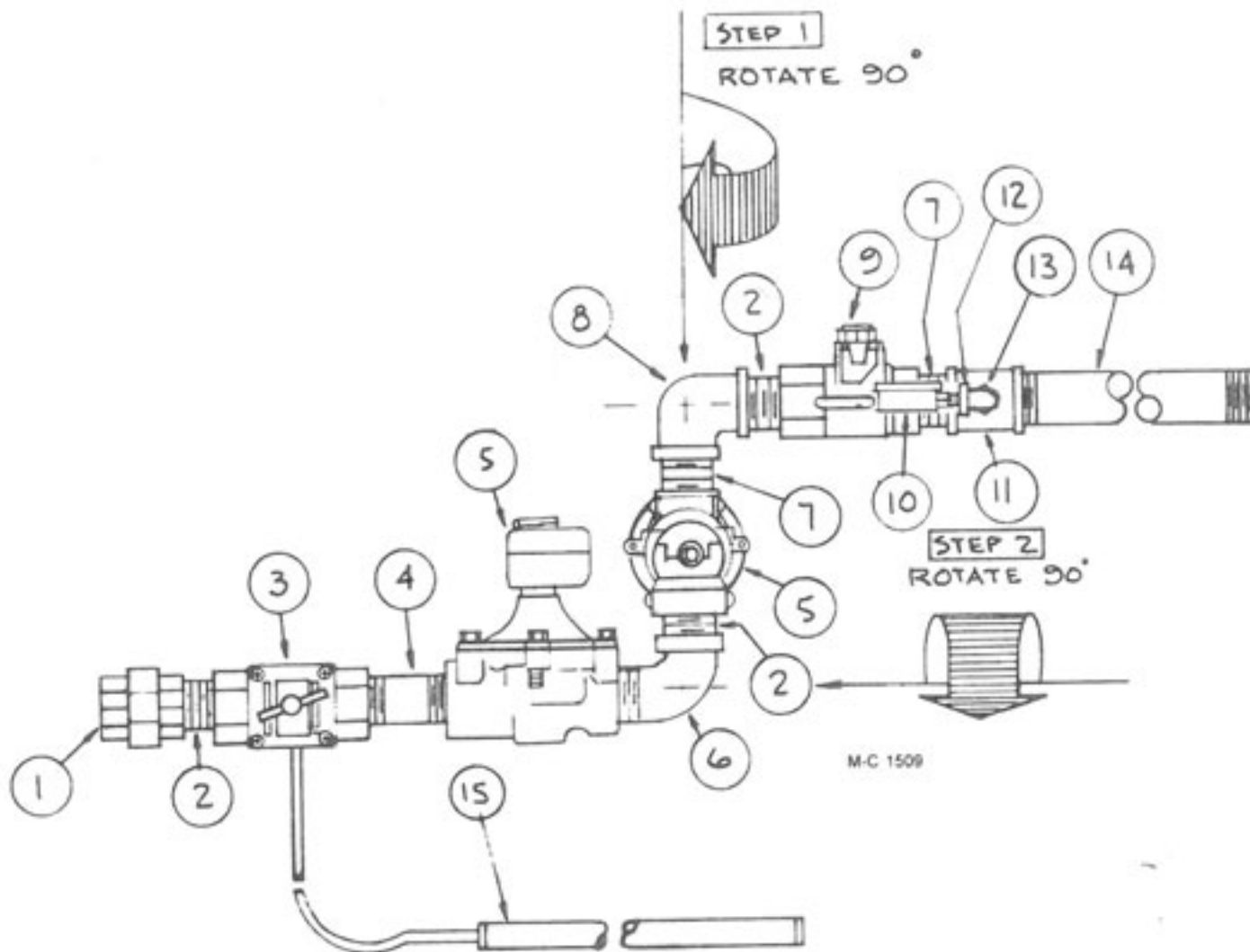
**NOTE:** Kit includes all internal parts that would require replacement in normal service and installation instructions.

## LP LIQUID LINE SUPPLY MANIFOLD



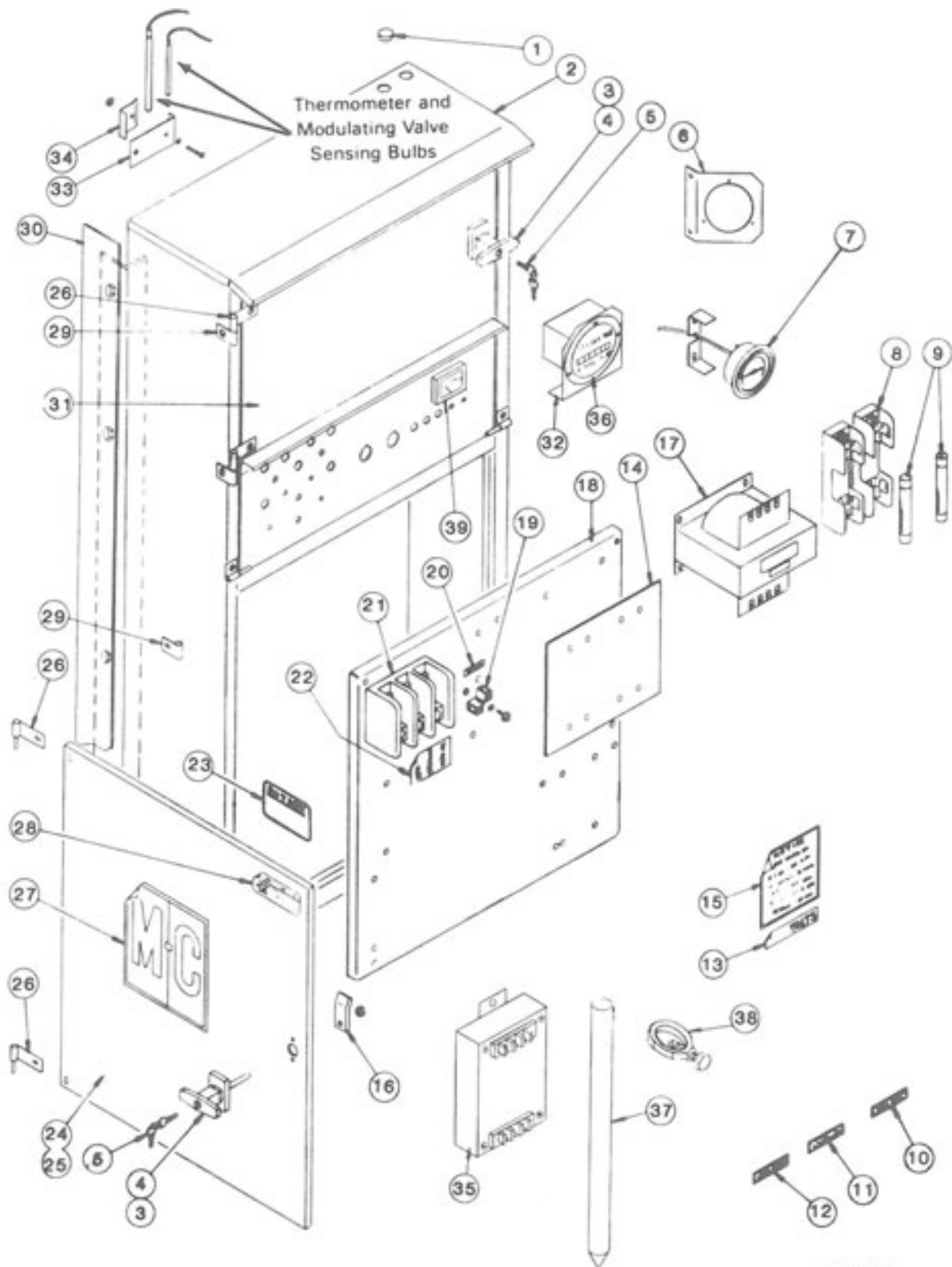
Ref.	Part No.	Qty.	Description
1	121 8036	1	½" (12.7mm) x 90° Elbow Extra Heavy
2	121 8094	4	½" x 1½" (12.7 x 38.1mm) Nipple Extra Heavy
3	123 7007	1	½" (12.7mm) Strainer
	822 97	1	½" (12.7mm) Screen Only
4	121 7015	1	½" (12.7mm) Flip Valve
5	120 8035	1	½" (12.7mm) Tee Extra Heavy
6	121 7014	1	½" (12.7mm) Relief Valve Adapter
7	121 7013	1	Relief Valve
8	125 7082	1	½" (12.7mm) Solenoid Valve
	122 7001	1	Coil Only
	122 7039	1	Repair Kit
9	127 8028	1	½" x 6" (12.7mm x 15cm) Nipple Extra Heavy
10	121 8022	1	½" (12.7mm) Union Extra Heavy
11	123 7034	1	½" x 20" (12.7mm x 51cm) Rubber Hose
12	128 8010	1	½" (12.7mm) Union Elbow Extra Heavy

## NATURAL GAS MANIFOLD



Ref.	Part No.	Qty.	Description
1	123 8053	1	1 1/4" (31.75mm) Standard Union
2	123 8069	3	1 1/4" (31.75mm) Standard Close Nipple
3	123 7024	1	1 1/4" Modulating Valve 140° to 250°F (60° to 121°C) P.E.
4	128 8003	1	1 1/4" x 3 1/2" (31.75mm x 8.9cm) Standard Nipple
5	128 7001	2	1 1/4" (31.75mm) Solenoid Valve
6	123 8062	1	1 1/4" (31.75mm) Street Elbow
7	125 8013	2	1 1/4" x 2" (31.75mm x 50.8mm) Standard Nipple
8	123 8051	1	1 1/4" (31.75mm) 90° Standard Elbow
9	123 7003	1	1 1/4" (31.75mm) Hand Valve
10	120 7002	1	Gas Pressure Gauge
11	127 8131	1	1 1/4" x 1 1/4" x 3/8" (31.75 x 31.75 x 9.5mm) Standard Tee
12	121 8039	1	1/4" (6.35mm) 90° Street Elbow
13	127 8132	1	3/8" to 1/4" (9.5 to 6.35mm) Reducer
14	127 8025	1	1 1/4" x 36" (31.75mm x 91.4cm) Standard Nipple
15	122 7036	1	Power Element 140° to 250°F (60° to 121°C) Standard
	122 7023	1	Power Element 90° to 210°F (32° to 99°C) Optional
	122 7019	1	Power Element 55° to 155°F (13° to 68°C) Optional

# 115 V AND MOTOR CONTROL CABINET

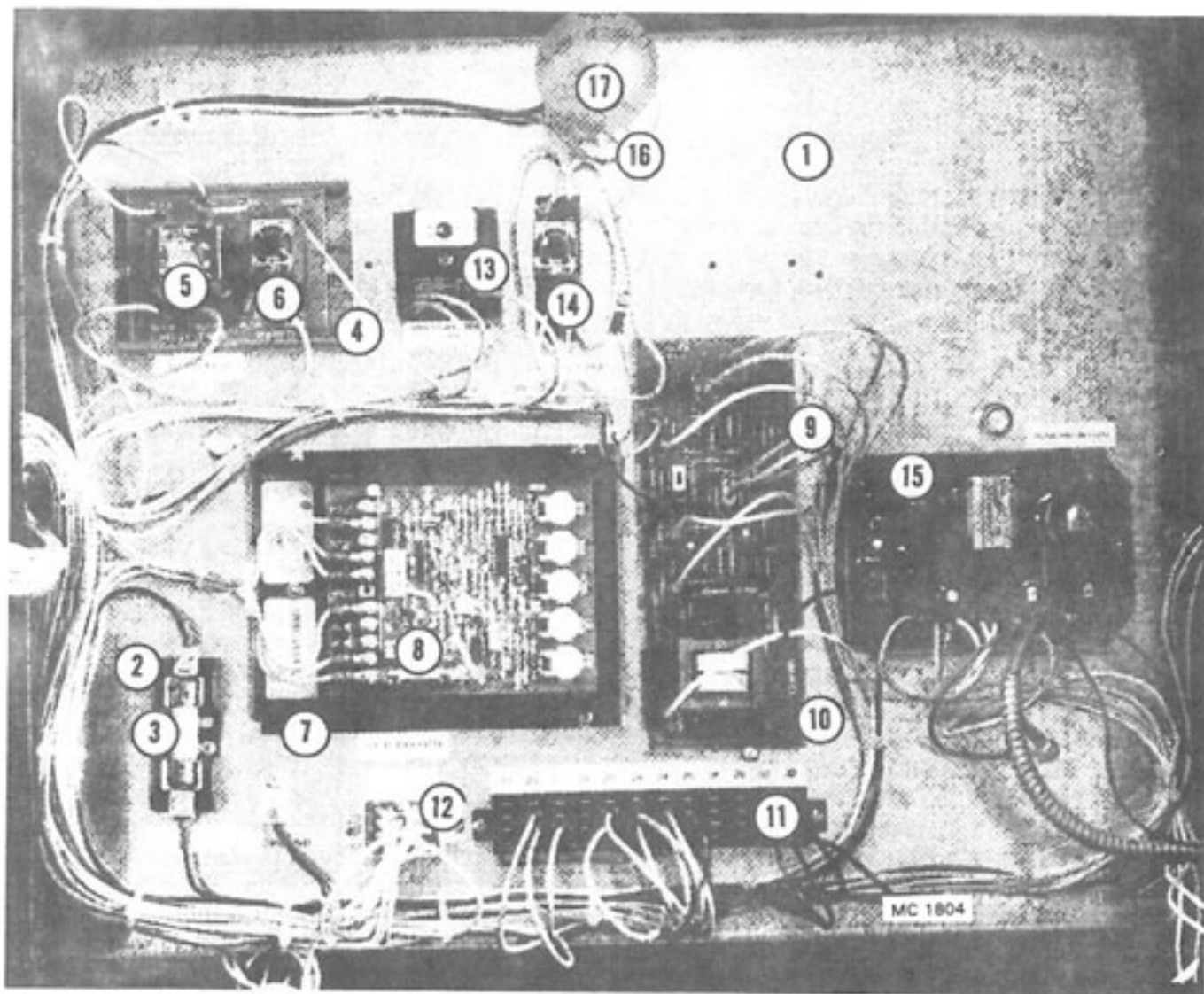


MC 1805

# 115 V AND MOTOR CONTROL CABINET

Ref.	Part No.	Qty.	Description	Ref.	Part No.	Qty.	Description
1	121 8600	1	Hole Plug	17	127 6855	1	200/208V Transformer (750VA)
2	128 0307	1	Control Cabinet Weld		127 6827	1	230/460V Transformer (750VA)
	128 8600	-	Weather Stripping - ¼" x ½" (Specify ft. reqd.)		127 6829	1	230/460/575V Trans- former (750VA)
3	124 1021	2	Door "T" Handle Ass'y (Incl. Ref. 5 keys, Ref. 16 cam and mtg. hdwe.) Lever type handle no longer available.	18	124 4453	1	Component Mtg. Panel
4	128 8946	2	Door "T" Handle w/keys (Less Ref. 16 cam)	19	125 6918	2	Grounding Lug
5	122 8900	2	Door "T" Handle Key	20	128 8349	1	Ground Decal
6	124 4824	1	Thermometer Mt. Plate	21	128 6957	1	Splitter Block-1 & 3 Phase
7	128 8983	1	Thermometer - 15' Capillary (Mtg. brkt. incl.)	22	128 8318	1	Splitter Block Voltage Decal
8	121 6988	2	Fuse Holder (208V, 460V & 575V)	23	001 8310	1	Machine Warranty Decal
9	124 6835	2	208V Fuse - FRN9	24	128 1930	1	Lower Door Ass'y (Incl. Ref. 3, 16 & 25 thru 28)
	124 6829	2	460V Fuse - FRS4	25	124 4816	1	Door - Lower
	127 6839	2	575V Fuse - FRS3.2	26	021 0012	4	Door Hinge w/Pin
10	121 8313	1	Heat Fan Decal	27	001 8302	1	M-C Decal - 8-3/16" x 9"
11	128 8335	1	Unload Auger Decal	28	121 8316	1	Dryer Warning Decal
12	121 8351	1	Level Auger Decal	29	121 4656	6	Door Hinge w/o Pin
13	123 8339	1	208 Volts Decal	30	128 2676	2	Cabinet Extension
	123 8336	1	230 Volts Decal	31	128 0340	1	Control Cabinet Door (1 Burner)
	123 8335	1	460 Volts Decal	32	124 2855	1	Hour Meter Bracket
	123 8338	1	575 Volts Decal	33	121 2883	-	Sensing Bulb Bracket
14	128 5789	2	Insulator Sheet (460V & 575V)	34	121 2882	-	Sensing Bulb Clip
15	121 8315	1	Notice, Warranty Decal	35	124 6947	1	Motor Saver (20HP 1Ø only)
16	128 3425	2	Door Handle Cam	36	444 645	1	Hour Meter
				37	124 6980	1	Grounding Rod - 8 ft. x 9/16" diameter
				38	124 6970	1	Grounding Rod Ring
				39	124 6981	1	Discharge Meter

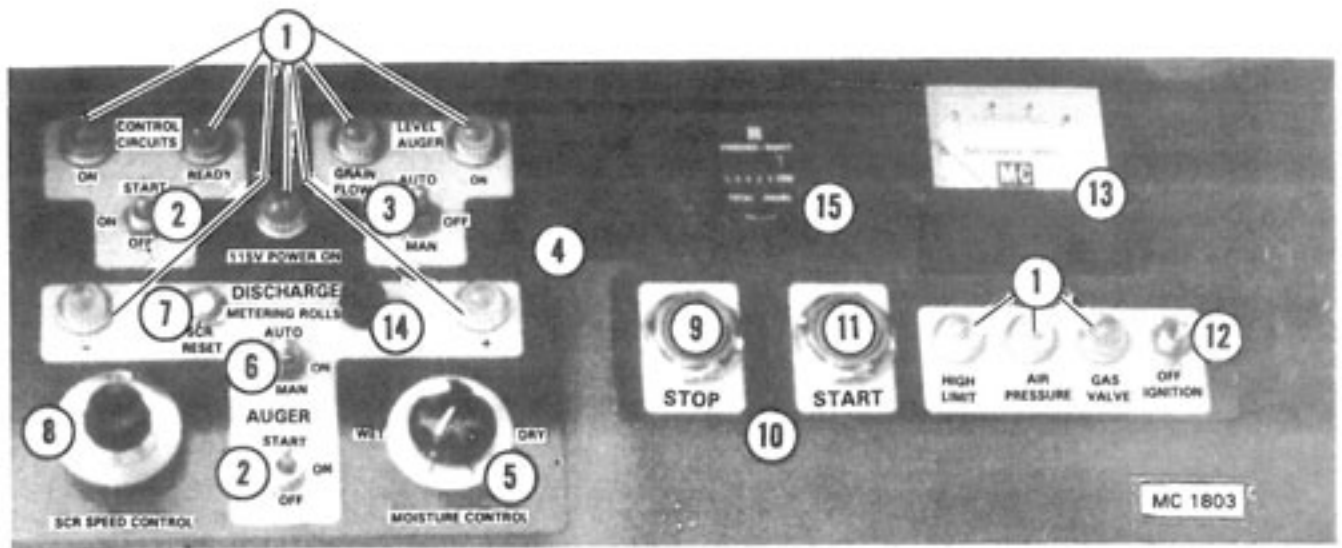
## ELECTRICAL COMPONENTS IN 115V CONTROL CABINET



Ref.	Part No.	Description
1	021 4770	Component Mounting Board
2	128 6851	Fuse Holder
3	128 6967	10 Amp Fuse (NON-10)
4	124 6972	Relay & Timer Socket Board
5	021 6809	Relay
6	124 6978	60 Minute Adjustable Timer Grain Flow or Cold Grain
7	124 6874	SCR Board (Dart)
8	121 6805	10 Amp. - GLH Fuse
9	124 6995	Moisture Control Board
10	128 5916	Snap Track 8 1/2" (21.6cm)
11	124 6928	Terminal Block 12-Position
12	124 6929	Terminal Block 3-Position
13	124 6996	0 to 3 Minute Adjustable Level Auger Timer
14	124 6987	Timer Base - Cold Grain
15	121 6965	Ignition Board with built-in (15) second purge timer and reset
16	124 6841	Light Bulb Socket
17	124 6842	50 Watt Rough Service Bulb



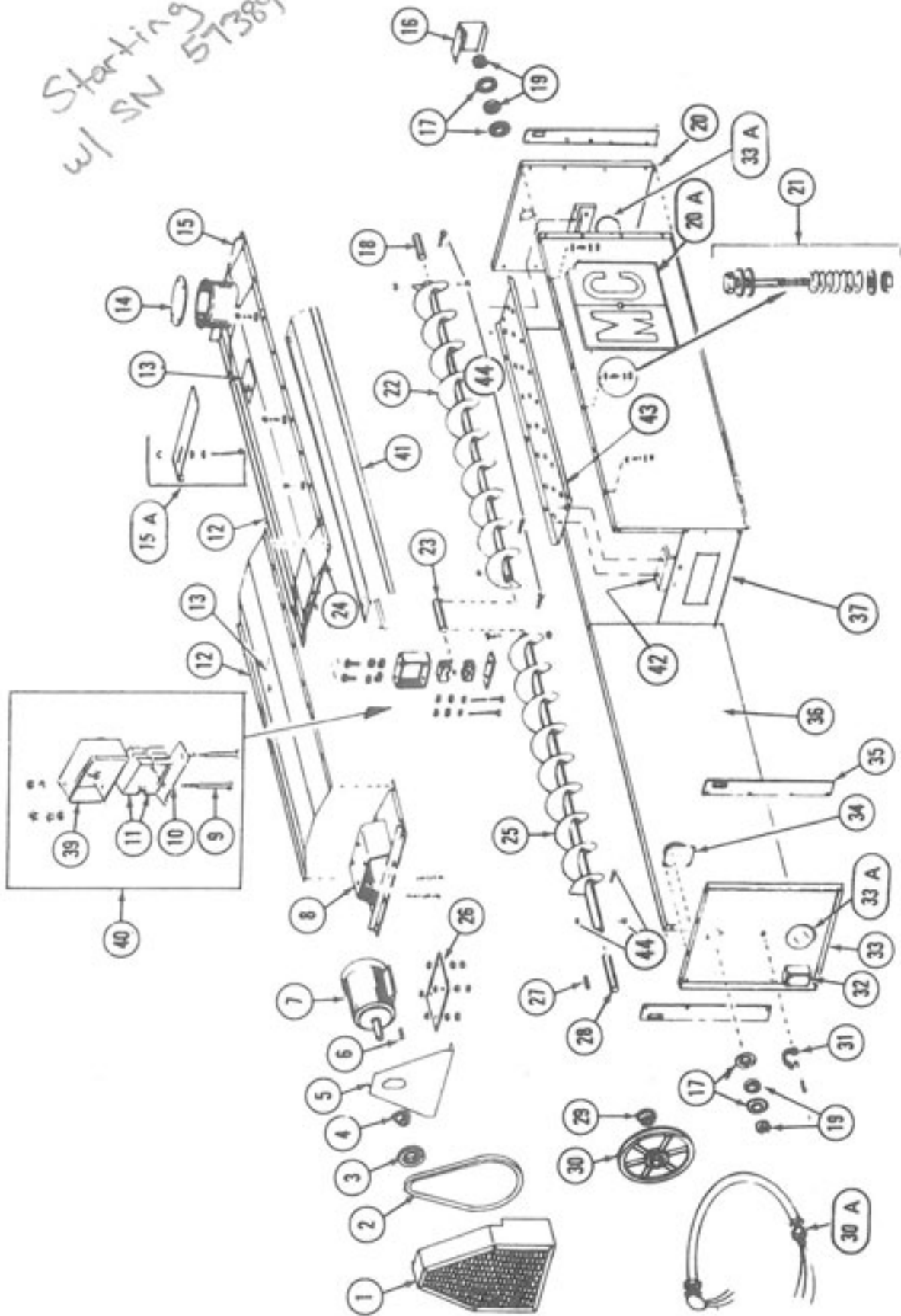
## CONTROL PANEL LIGHTS, SWITCHES AND CONTROLS



Ref.	Part No.	Description
1	121 6808	125V Indicator Lamp Assembly (Inc. lamp & lens)
	122 6810	125V Indicator Lamp
	122 6800	Indicator Lamp Lens (Clear)
2	120 6827	OFF-ON-ON Momentary Contact Toggle Switch
3	121 6807	ON-OFF-ON Toggle Switch (DPDT)
4	128 8365	115V Control Bezel
5	124 6955	Moisture Control Potentiometer & Wires - 60" (152cm)
	124 6941	Knob
6	124 6895	ON-OFF-ON Toggle Switch (3PDT)
7	124 6848	8 Amp Circuit Breaker (SCR Drive)
8	124 1195	SCR Drive Potentiometer (10 turn w/wire) - 42" (107cm)
	124 6892	Multi-Dial
9	128 6845	Stop Button - Red
10	128 8358	Fan Control Bezel
11	128 6844	Start Button - Green
12	121 6815	ON-OFF Toggle Switch (SPST)
13	124 6981	Discharge Meter
14	124 6938	Fuse Holder
	124 6937	1 Amp Fuse Slo-Blow
15	444 645	Hour Meter

# 570 HOPPER AND LEVEL AUGER

Starting  
w/ SN 57389



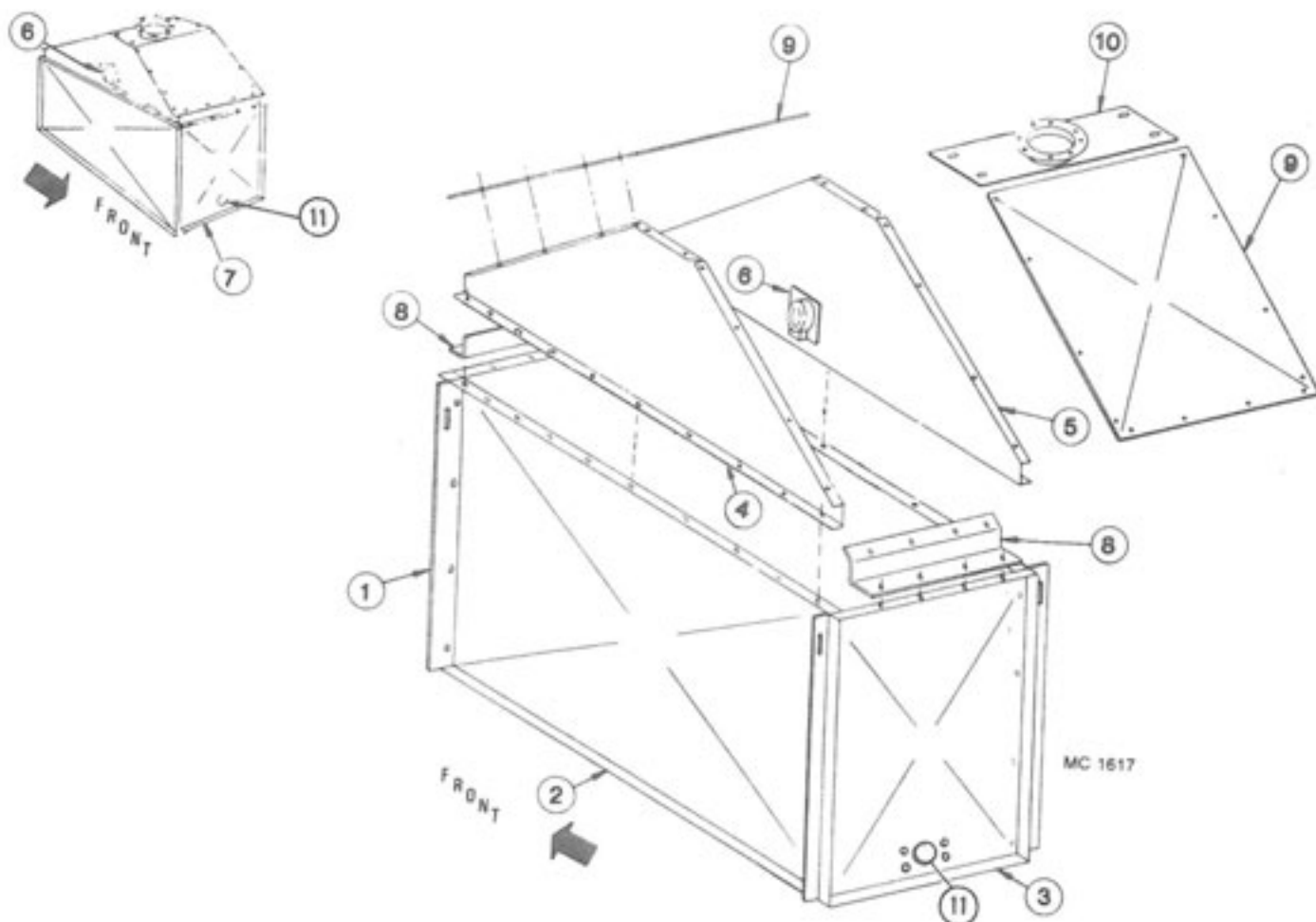
MC 1573

# 570 HOPPER AND LEVEL AUGER

*Starting w/ 57389 Serial #*

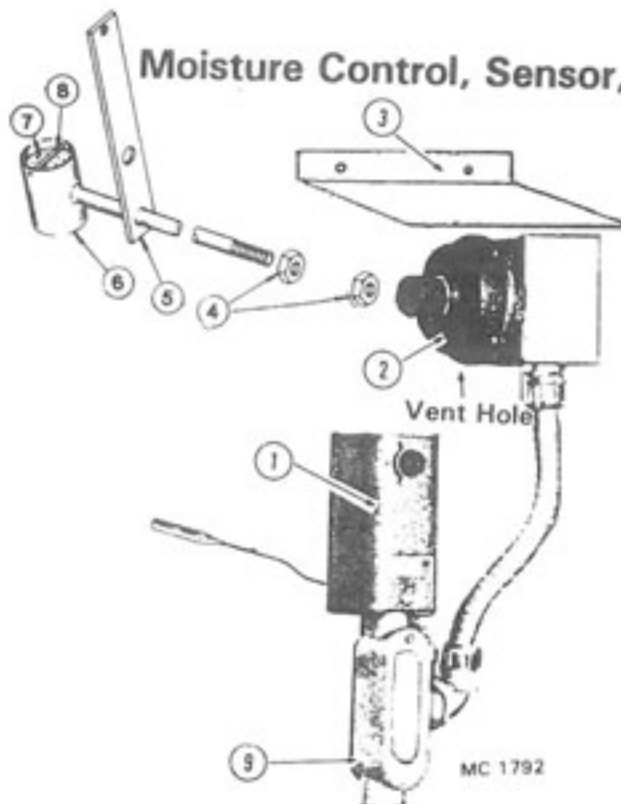
Ref.	Part No.	Qty.	Description	Ref.	Part No.	Qty.	Description
1	129 0003	1	Level Auger Guard	24	129 0000	1	Level Auger Support
2	128 6103	1	Level Auger Belt 2:3V/710 (banded belt) or 128 6104 in matched set of two	25	128 0317	1	Level Auger 82 $\frac{3}{4}$ " (209cm) RH flighting
3	-----	-	Level Auger Motor Sheave "SH"	26	129 4202	1	Level Auger Motor Mt. Plate
	128 6207	1	3V/3.65 x 2 Groove 60 Cycle		000 8161	4	$\frac{1}{2}$ -13 x 3 $\frac{1}{2}$ " (12.7 x 89mm) Capscrew (Full thread)
	128 6220	1	3V/4.50 x 2 Groove 50 Cycle		000 8170	4	$\frac{1}{2}$ -13 (12.7mm) Flanged Locknut
4	128 6214	1	Level Auger Motor Bushing - 1 $\frac{1}{8}$ " (28.6mm) SH Bushing for 3HP & 5HP motor (Incl. capscrews & lockwashers)		000 8163	8	$\frac{1}{2}$ -13 (12.7mm) Hex Nut
				27	001 5120	1	Key - $\frac{1}{4}$ " x 1 $\frac{1}{2}$ " (6.35 x 38.1mm)
5	129 4944	1	Level Auger Guard Back	28	128 5051	1	Level Auger Front Shaft 1 $\frac{1}{4}$ " x 10" (3.17 x 25.4cm)
6	001 5119	-	Key - $\frac{1}{4}$ " x 2" (6.35x51mm) 3HP motor	29	121 6241	1	1 $\frac{1}{4}$ " (31.75mm) SK Bushing (Incl. capscrews & lockwashers)
7	128 6818	1	230/460V 3HP 3Ø Motor	30	128 6208	-	Level Auger Sheave "SK" 3V/19.0 x 2 Grv.
8	129 0001	1	Level Auger Motor Mt.	30A	128 1960	1	Flexible Conduit w/Wires
9	001 8287	2	$\frac{3}{8}$ -16x3 $\frac{1}{2}$ " (9.5x95.2mm) Capscrew-Grd. 5	31	128 8951	1	Rubber Strap w/Hook
	001 8139	2	$\frac{3}{8}$ " (9.5mm) Lockwasher	32	128 6922	1	Slatter Box $\frac{1}{2}$ " (12.7mm)
	000 8162	8	$\frac{3}{8}$ -16 (9.5mm) Hex Nut		123 6884	1	Round Box $\frac{1}{2}$ " (12.7mm)
10	128 3415	2	Bearing Hanger Bar	33	129 2850	1	Upper End Panel-Front (Proximity Switch-2001 Models Only)
11	128 6021	1	Wood Bearing - 1 $\frac{1}{4}$ " (31.75mm) 2 halves		129 2851	1	Upper End Panel-Front (Diaphragm Switch-After 1 Jan. 2002, see page 31)
12	129 2945	2	Hopper Cover - Front & Rear 76" (193cm)	33A	129 5702	2	Port View Lens
13	128 8355	2	Warning Decal	34	125 6824	1	Level Switch - Proximity Type (2001 Models Only)
14	129 4204	1	Receiving Tube Cover		128 6992	1	Level Switch - Diaphragm Type (after 1 Jan. 2002, see pg. 31)
15	129 0002	1	Receiving Hopper	35	129 3412	4	Lifting Bar
15A	129 4205	1	Flow Restrictor	36	129 2836	4	Hopper Side
	129 5703	1	Position & Locking Bolt	37	129 2715	1	Hopper Sectional Panel
16	000 8168	3	$\frac{3}{8}$ -16 (9.5mm) Flanged Locknut	38	129 2603	6	Hopper Brace
	129 4947	1	Stub Guard	39	128 0292	1	Level Auger Brg. Support
17	001 6004	4	Bearing Flangette 1 $\frac{1}{4}$ " (31.75mm)		001 8135	2	$\frac{3}{8}$ -16 x 1" (9.5x25.4mm) Capscrew - Grd. 5
18	128 5052	1	Level Auger Rear Shaft 1 $\frac{1}{4}$ " x 8" (31.75mm x 20.3cm)		001 8139	2	$\frac{3}{8}$ " (9.5mm) Lockwasher
19	001 6003	2	Bearing w/Lock Collar - 1 $\frac{1}{4}$ " (31.75mm)	40	000 8162	2	$\frac{3}{8}$ -16 (9.5mm) Hex Nut
20	129 2834	1	Upper End Panel - Rear		122 1008	1	Level Auger Brg. Kit (Incl. Ref. 9, 10, 11, & 39 in quantities reqd. for one brg.)
20A	121 8343	2	M-C Decal 26 $\frac{1}{2}$ " x 23" (67 x 60cm)		129 2838	1	Auger Cover Short
21	000 8101	12	$\frac{1}{4}$ -20 x 2" (6.35 x 51mm) Capscrew	41	128 2760	2	Auger Pan Support Bracket
	131 8708	12	Spring $\frac{3}{8}$ " OD x $\frac{3}{4}$ " (15.9x44.5mm) Plated	42	128 2761	1	Pan Under Auger
	000 8172	36	$\frac{1}{4}$ " (6.35mm) Flatwasher	43	001 8137	8	$\frac{3}{8}$ -16 x 2" (9.5 X 51mm) Capscrew
22	000 8210	12	$\frac{1}{4}$ -20 (6.35mm) Two-Way Locknut	44	001 8149	8	$\frac{3}{8}$ -16 (9.5mm) 2-Way Locknut
23	128 0122	1	Level Auger 93 $\frac{1}{2}$ " (238cm) RH flighting				
	128 5050	1	Level Auger Center Shaft 1 $\frac{1}{4}$ " x 10 $\frac{1}{4}$ " (3.175 x 26cm)				

## 370 HOPPER AND HOPPER EXTENSION



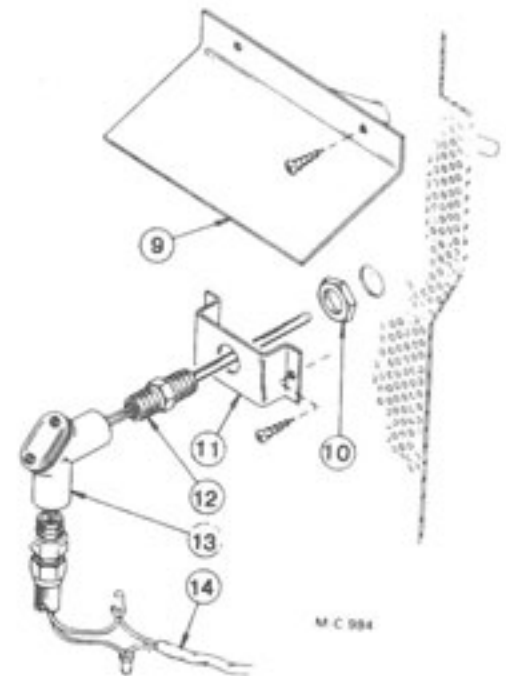
Ref.	Part No.	Qty.	Description
1	129 3412	4	Lifting Bar
2	129 2843	2	Hopper Side
3	129 2853	1	Rear Hopper End Panel w/View Lens Hole
4	124 4777	1	Hopper Extension LH
5	129 2849	1	Hopper Extension - Level Switch - Diaphragm RH
6	128 6992	1	Level Switch-Diaphragm Type - After 1 Jan. 2002, see page 37
	125 6824	1	Level Switch-Proximity Type - 2001 Models Only
7	129 4951	1	Front Hopper End Panel w/View Lens Hole
8	124 4776	2	Hopper Extension End Angle
9	124 4775	2	Hopper Extension Top
10	128 0336	1	Grain Receiving Inlet
11	129 5702	2	Port View Lens
	000 8212	8	¼-20 x ½" (6.35 x 12.7mm) Truss Head Bolt
	000 8167	8	¼" (6.35mm) Whiz Locknut

# Moisture Control, Sensor, Air Pressure and High Limit Switches



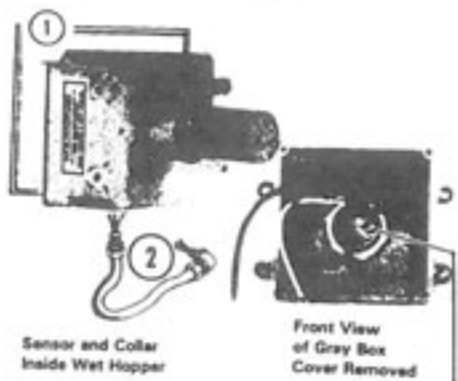
Air Pressure and High Limit Switches

Ref. Part No.	Description
1 124 6934	High Limit Switch - Adjustable-Manual Reset
2 121 6849	Air Pressure Switch w/Cover
3 121 2946	High Limit Switch Shield
4 121 8000	Pipe Locknut - 1/4" (6.35mm)
5 121 2007	Air Pressure Tube Bracket
6 121 0169	Air Pressure Tube
7 121 5716	Air Pressure Tube Filter
8 -----	Filter Retainer (Wire)
9 121 6883	1/2" (12.7mm) Conduit Tee w/ Cover



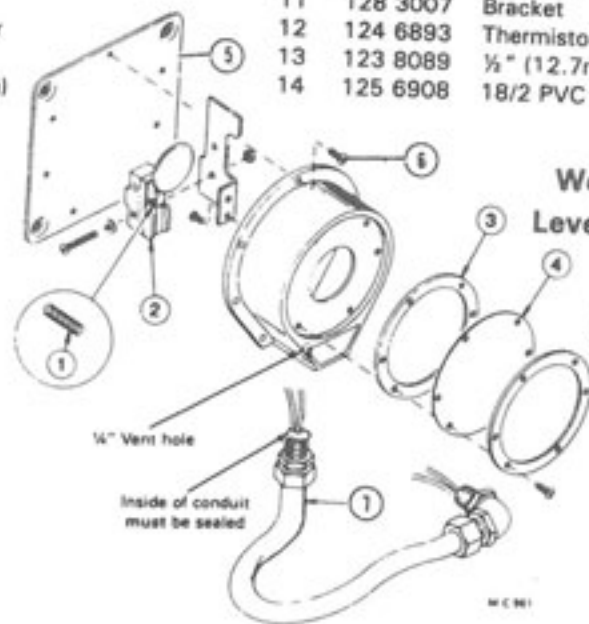
Moisture Control Sensor

Ref. Part No.	Description
9 121 0031	Moisture Control Thermistor Shield
10 121 6915	Locknut - 1/2" (12.7mm)
11 128 3007	Bracket
12 124 6893	Thermistor Sensing Probe
13 123 8089	1/2" (12.7mm) Handy El
14 125 6908	18/2 PVC Cord with Shield



Wet Holding Hopper Level Switch Assembly - Proximity Style All 2001 Models -  
- Returned to Diaphragm Style on All Models 1 Jan. 2002 -

Ref. Part No.	Qty.	Description
1 125 6894	1	Level (Proximity) Switch (Less ref. 2)
2 128 1995	1	Level Switch Wire Assembly



Wet Holding Hopper Level Switch Assembly

Returned to Diaphragm Style on All Models  
1 Jan. 2002 -

Ref. Part No.	Qty.	Description
- 128 6992	1	Level Switch (Less ref. 5)
1 122 6847	1	Spring
2 122 6848	1	Micro Switch Assembly
3 122 6850	1	Gasket
4 122 6849	1	Diaphragm (Teflon)
5 129 2855	1	Level Switch Face Plate
6 000 8194	7	8-32 x 1/2" (12.7mm) Round Hd. Screw
000 8183	7	8-32" Nut
7 128 1995	1	Level Switch Wire Assembly

## DRYER MOTORS, CIRCUIT BREAKERS AND MAGNETIC STARTERS

MOTOR			CIRCUIT BREAKER			MAGNETIC STARTER			
HP	*FLA	Part No.	Part No.	Amps	Square "D" No.	Starter Part No.	Square "D" No.	Thermal Unit Part No.	Thermal Unit Size

### 200/208V - 3 PHASE - 60 HZ

□1.5	5.98	127 6833	128 6882	15	QOU 315	124 6931	DPS033	128 6947	B 9.10
†1.5	5.98	127 6861	128 6882	15	QOU 315	124 6931	DPS033	128 6947	B 9.10
2	7.82	127 6841	128 6882	15	QUO 315	124 6931	DPS033	128 6863	B 11.5
3	11.0	127 6832	124 6875	20	QOU 320	124 6931	DPS033	128 6823	B 17.5
5	17.5	127 6843	124 6876	35	QOU 335	124 6931	DPS033	120 6857	B 32
7.5	25.3	127 6858	124 6904	50	QOU 350	124 6930	DPS053	128 6979	B 40
10	32.2	203 6809	125 6912	60	QOU 360	124 6930	DPS053	128 6950	B 50
15	48.3	126 6854	128 6885	90	QOU 390	124 6930	DPS053	128 6953	B 79
20	62.1	127 6853	128 6966	100	QOU 3100	124 1082	DPA73	128 6827	CC 87.7
25	67.0	127 6852	128 6887	110	Q2L 3110	124 1082	DPA73	120 6844	CC 103
30	80.0	127 6859	124 6906	125	Q2L 3125	124 1083	DPA93	128 6954	CC 132

### 230V - 1 PHASE - 60 HZ

□1.5	8.3	121 6846	128 6878	20	QOU 220	124 6931	DPS033	128 6863	B 11.5
†1.5	10.6	127 6863	128 6878	20	QOU 220	124 6931	DPS033	120 6850	B 15.5
2	12.3	121 6862	124 6903	25	QOU 225	124 6931	DPS033	128 6949	B 19.5
3	20.0	128 6829	124 6909	40	QOU 240	124 6931	DPS033	120 6857	B 32
5	28.0	201 6815	128 6880	60	QOU 260	124 6930	DPS053	128 6979	B 40
17.5	38.5	124 6816	124 6908	80	QOU 280	124 6930	DPS053	124 6910	B 66
17.5	38.5	124 6888	124 6908	80	QOU 280	124 6930	DPS053	124 6910	B 66
10	45.0	124 6818	128 6881	90	QOU 290	124 6930	DPS053	128 6953	B 79
20	92.0	124 6879	124 6881	125	Q2L 2125	124 1083	DPA93	128 6820	CC 156

### 230V - 3 PHASE - 60 HZ

□1.5	5.0	121 6845	128 6882	15	QOU 315	124 6931	DPS033	120 6851	B 7.70
†1.5	5.0	127 6860	128 6882	15	QOU 315	124 6931	DPS033	120 6851	B 7.70
2	6.0	121 6861	128 6882	15	QOU 315	124 6931	DPS033	128 6947	B 9.10
3	9.0	128 6818	128 6882	15	QOU 315	124 6931	DPS033	125 6931	B 14.0
5	13.8	128 6815	124 6907	25	QOU 325	124 6931	DPS033	120 6855	B 25
7.5	20.6	121 6948	128 6968	40	QOU 340	124 6931	DPS033	128 6946	B 36
10	27.2	201 6818	125 6912	60	QOU 360	124 6930	DPS053	120 6853	B 45
15	39.2	201 6819	128 6891	80	QOU 380	124 6930	DPS053	128 6978	B 70
20	49.6	125 6934	128 6885	90	QOU 390	124 1082	DPA73	128 6972	CC 74.6
25	61.0	201 6842	128 6966	100	QOU 3100	124 1082	DPA73	128 6827	CC 87.7
30	73.0	128 6986	128 6887	110	QL2 3110	124 1083	DPA93	128 6820	CC 156

\*If FLA (Full Load Amps) shown does not match FLA imprinted on motor name plate, refer to Square D charts for correct thermal unit size.

□ - 5/8" shaft

† - 7/8" shaft

† - 124 6816 has 1 3/8" shaft. 124 6888 has 1 1/8" shaft.

**DRYER MOTORS, CIRCUIT BREAKERS AND MAGNETIC STARTERS**

MOTOR			CIRCUIT BREAKER			MAGNETIC STARTER			
HP	*FLA	Part No.	Part No.	Amps	Sq."D" No.	Starter Part No.	Sq."D" No.	Thermal Unit Part No.	Thermal Unit Size
<b>380V - 3 PHASE - 50 HZ</b>									
1.5	2.9	127 6860	128 6931	15	FAL 36015	124 6931	DPS033	128 6951	B 6.25
**1.5	2.9	123 6876	128 6931	15	FAL 36015	124 6931	DPS033	128 6951	B 6.25
2	3.7	121 6861	128 6931	15	FAL 36015	124 6931	DPS033	120 6845	B 6.90
**2	3.7	124 6867	128 6931	15	FAL 36015	124 6931	DPS033	120 6845	B 6.90
3	5.2	128 6818	128 6931	15	FAL 36015	124 6931	DPS033	128 6947	B 9.10
5	7.9	128 6815	128 6931	15	FAL 36015	124 6931	DPS033	128 6863	B 11.5
10	16.2	210 6818	128 6930	50	FAL 36050	124 6871	DPS033	120 6855	B 25
15	23.0	201 6819	128 6937	60	FAL 36060	124 6930	DPS053	120 6853	B 45
20	30.5	125 6934	124 6905	70	FAL 36070	124 6930	DPS053	128 6950	B 50
<b>460V - 3 PHASE - 60 HZ</b>									
□ 1.5	2.5	121 6845	128 6931	15	FAL 36015	124 6931	DPS033	128 6984	B 3.00
‡ 1.5	2.5	127 6860	128 6931	15	FAL 36015	124 6931	DPS033	128 6984	B 3.00
2	3.0	121 6861	128 6931	15	FAL 36015	124 6931	DPS033	128 6948	B 4.15
3	4.5	128 6818	128 6931	15	FAL 36015	124 6931	DPS033	120 6845	B 6.9
5	6.9	128 6815	128 6931	15	FAL 36015	124 6931	DPS033	128 6952	B 10.2
7.5	10.3	121 6948	128 6933	20	FAL 36020	124 6931	DPS033	128 6823	B 17.5
10	13.6	201 6818	125 6928	30	FAL 36030	124 6931	DPS033	120 6855	B 25.0
15	19.6	210 6819	128 6930	40	FAL 36040	124 6930	DPS053	128 6946	B 36
20	24.8	125 6934	128 6937	60	FAL 36060	124 6930	DPS053	120 6853	B 45
25	31	201 6842	124 6905	70	FAL 36070	124 6930	DPS053	128 6983	B 56
30	37	128 6986	125 6929	80	FAL 36080	124 6930	DPS053	128 6978	B 70
<b>575V - 3 PHASE - 60 HZ</b>									
□ 1.5	2	127 6815	128 6931	15	FAL 36015	124 6931	DPS033	128 6984	B 3.00
‡ 1.5	2	127 6862	128 6931	15	FAL 36015	124 6931	DPS033	128 6984	B 3.00
2	2.4	127 6816	128 6931	15	FAL 36015	124 6931	DPS033	120 6848	B 3.70
3	3.6	127 6814	128 6931	15	FAL 36015	124 6931	DPS033	120 6829	B 5.50
5	5.5	127 6847	128 6931	15	FAL 36015	124 6931	DPS033	128 6985	B 8.20
7.5	8.2	127 6828	128 6931	15	FAL 36015	124 6931	DPS033	128 6863	B 11.5
10	10.8	127 6857	128 6933	20	FAL 36020	124 6931	DPS033	128 6823	B 17.5
15	15.6	127 6845	125 6928	30	FAL 36030	124 6931	DPS033	128 6971	B 28
20	19.8	127 6844	128 6930	40	FAL 36040	124 6931	DPS033	128 6946	B 36
25	25	127 6846	128 6937	60	FAL 36060	124 6930	DPS053	120 6853	B 45
30	30	124 6902	128 6937	60	FAL 36060	124 6930	DPS053	128 6983	B 56

\*If FLA (Full Load Amps) shown does not match FLA imprinted on motor name plate, refer to Square D charts for correct thermal unit size.

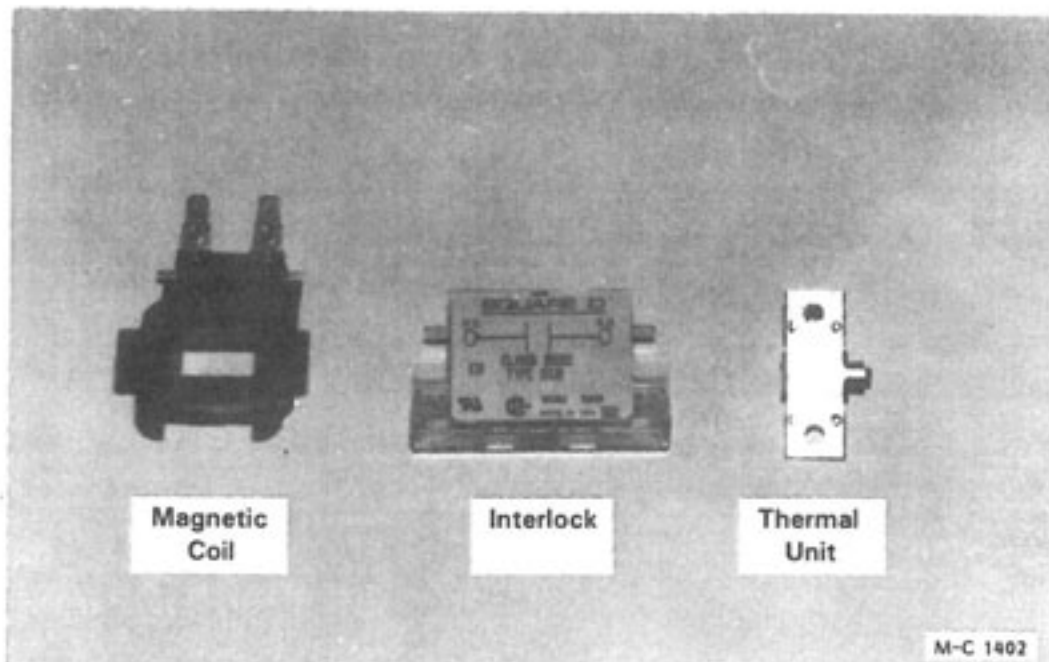
- \*\* "C" Face
- - 5/8" shaft
- ‡ - 7/8" shaft

## 115V COILS AND INTERLOCKS

STARTER		COIL		INTERLOCK	
SQUARE "D" NO.	M-C NO.	M-C NO.	SQUARE "D" NO.	M-C NO.	SQUARE "D" NO.
DPA73	124 1082	122 6861	9998-DA3V02	124 6933	9999-D-20
DPA93	124 1083	122 6861	9998-DA3V02	124 6933	9999-D-20
DPS053 (50) HZ	124 6930	122 6860	9998-DA1V02	124 6933	9999-D-20
DPS033 (50) HZ	124 6931	122 6860	9998-DA1V02	124 6933	9999-D-20
DPS033 (60) HZ	124 6931	122 6860	9998-DA1V02	124 6933	9999-D-20
DPS053 (60) HZ	124 6930	122 6860	9998-DA1V02	124 6933	9999-D-20

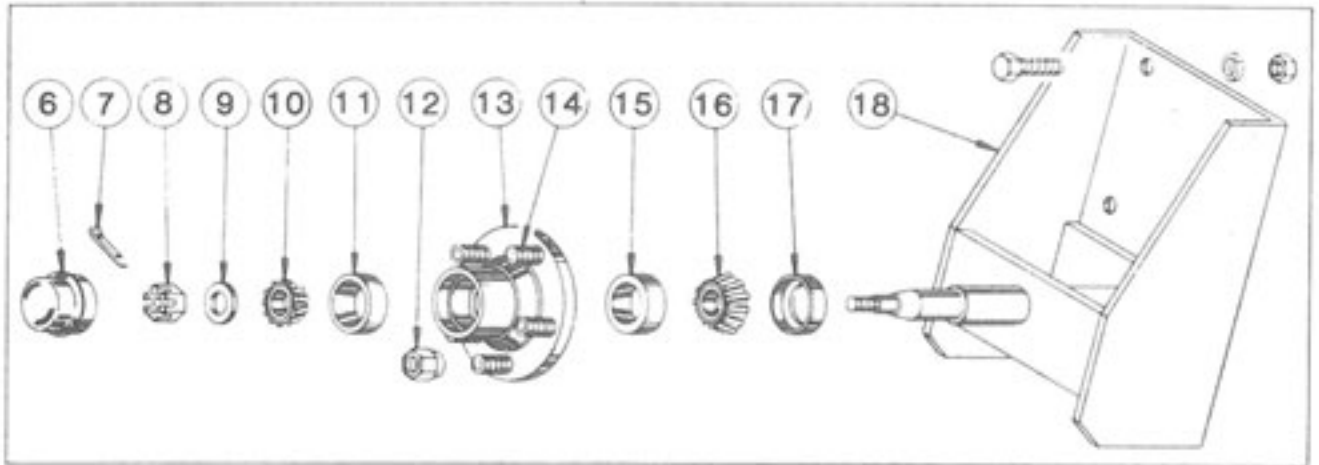
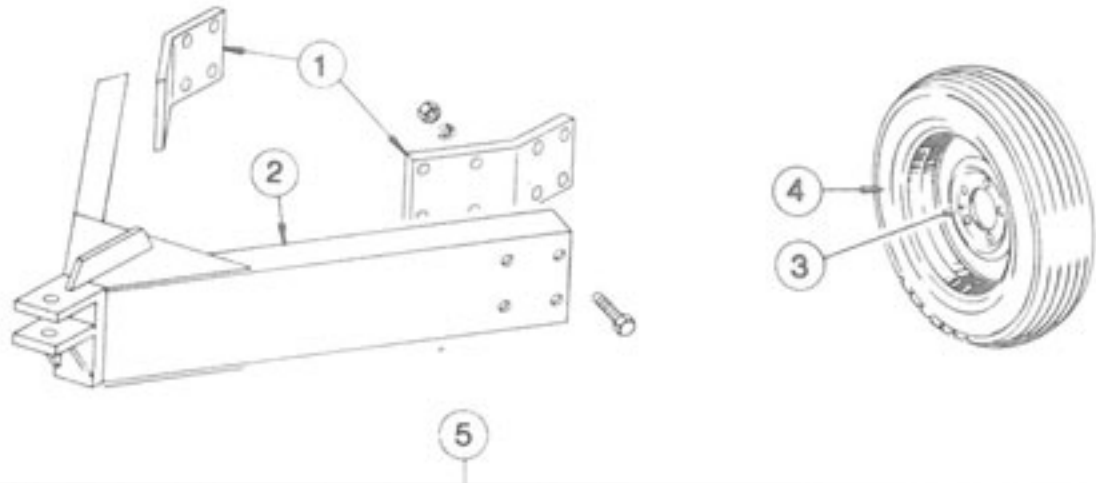
## JUMPER STRAP KITS AND CONTACT KITS

STARTER		JUMPER STRAP KIT (2 STRAPS PER KIT)		CONTACT KIT	
SQUARE "D" NO.	M-C NO.	M-C NO.	SQUARE "D" NO.	M-C NO.	SQUARE "D" NO.
DPA73	124 1082	124 6885	9998-S032	122 6863	9998-DRC7
DPA93	124 1083	124 6885	9998-S032	122 6864	9998-DRC9
DPS033 (50) HZ	124 6931	120 6841	9998-S031		
DPS053 (50) HZ	124 6930	120 6841	9998-S031	122 6862	9998-DRC5
DPS033 (60) HZ	124 6931	120 6841	9998-S031		
DPS053 (60) HZ	124 6930	120 6841	9998-S031	122 6862	9998-DRC5





## PORTABILITIES (Optional)



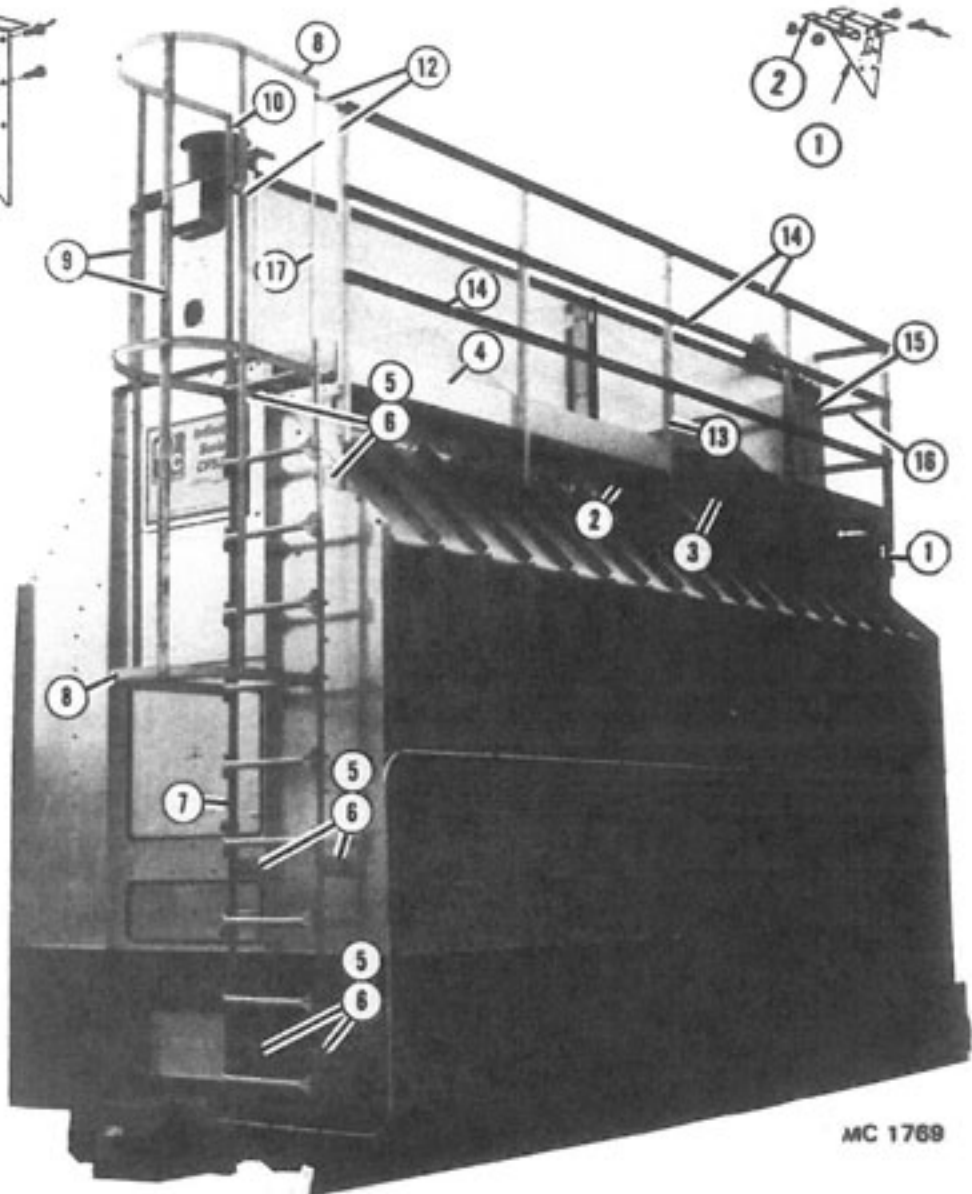
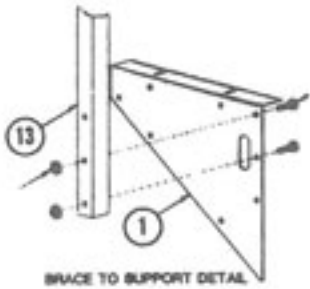
120 1030 - 4 Wheel Portabilities (Incl. Ref. 1 & 2 and four of Ref. 3 & 5 less tires)

M.C. 980

Ref.	Part No.	Qty.	Description	Ref.	Part No.	Qty.	Description
1	128 3671	2	Pole Mount Brkt.	6	001 8996	1	Hub Cap
	128 8196	8	3/4-10 x 2 1/2" Capscrew - Grd.5	7	001 8252	1	Cotter Pin - 1/8" x 1"
	000 8182	8	3/4" Lockwasher	8	001 8253	1	Spindle Nut
	000 8165	8	3/4-10 Hex Nut	9	001 8254	1	Spindle Washer
2	120 0047	1	Dryer Pole	10	001 6000	1	Bearing Cone - Outer
	128 8195	8	3/4-10 x 2" Capscrew - Grd. 5	11	002 6000	1	Bearing Cup - Outer
	000 8182	8	3/4" Lockwasher	12	001 8989	5	1/2-20 Lug Nut - 45°
	000 8165	8	3/4-10 Hex Nut	13	001 8992	1	Wheel Hub Ass'y - 5 Bolt (Incl. Ref. 11, 14 & 15)
3	001 8993	1	5 Bolt Wheel - 15"	14	002 8152	5	1/2-20 x 1 1/2" Stud
4	127 8990	1	7.60 x 15-6 Ply Tubeless Tire	15	002 6001	1	Bearing Cup - Inner
5	120 1028	1	Wheel Spindle & Hub Ass'y (Incl. Ref. 6 thru 18)	16	001 6001	1	Bearing Cone - Inner
	000 8146	6	5/8-11 x 1 1/2" Capscrew - Grd.5	17	001 8991	1	Seal
	000 8181	6	5/8" Lockwasher	18	120 0031	1	Wheel Mount
	000 8164	6	5/8-11 Hex Nut				

# WALKWAY (Optional)

8 ft. 16 ft. 24 ft. (2.4m)(4.9m)(7.3m)					8 ft. 16 ft. 24 ft. (2.4m)(4.9m)(7.3m)						
Ref.	Part No.	Qty.	Qty.	Qty.	Description	Ref.	Part No.	Qty.	Qty.	Qty.	Description
1	129 2600	3	5	7	Bridge Support	8	128 2015	3	3	3	Ladder Cage Hoop
2	129 2602	2	2	3	Grating Support	000 8307	12	12	12	12	5/16-18x $\frac{3}{4}$ " (7.9x19mm) Round Head Bolt
3	129 8700	1	2	3	Walkway Grating 8 ft. (2.4m)	001 8202	4	4	4	4	5/16-18x $\frac{3}{4}$ " (7.9x19mm) Hex Bolt
	120 8994	6	12	18	Grating Anchor Clip	000 8169	16	16	16	16	5/16"(7.9mm) Flanged Locknut
	001 8276	6	12	18	5/16-18x3" (7.9x76mm) Carriage Bolt	9	129 2033	4	4	4	Ladder Cage Strap 8 ft. (2.4m)
	000 8304	6	12	18	5/16"(7.9mm) Flanged Locknut	10	129 2031	1	1	1	Ladder Extension Left 61" (155cm)
4	128 2683	1	2	3	Walkway Toe Kick 96"(244cm)	11	129 2030	1	1	1	Ladder Extension Right 61" (155cm)
5	128 2685	6	6	6	Ladder Mounting Bracket	12	129 2624	2	2	2	Top Cage Mount Bracket
	000 8306	6	6	6	5/16-18x $\frac{3}{4}$ "(7.9x19mm) Washer Head Bolt	13	129 2021	3	5	7	Guard Rail Brace 55 $\frac{1}{2}$ " (141cm)
	000 8304	6	6	6	5/16"(7.9mm) Flanged Locknut	14	129 2004	3	6	9	Guard Rail 98" (249cm)
6	490 8704	6	6	6	Ladder Bracket Clip	15	129 2623	1	1	1	Short Rail Support Bracket
7	490 8703	1	1	1	Ladder 10 ft. (3m)	16	129 2032	3	3	3	Short Guard Rail 18 $\frac{1}{2}$ " (46cm)



MC 1769

