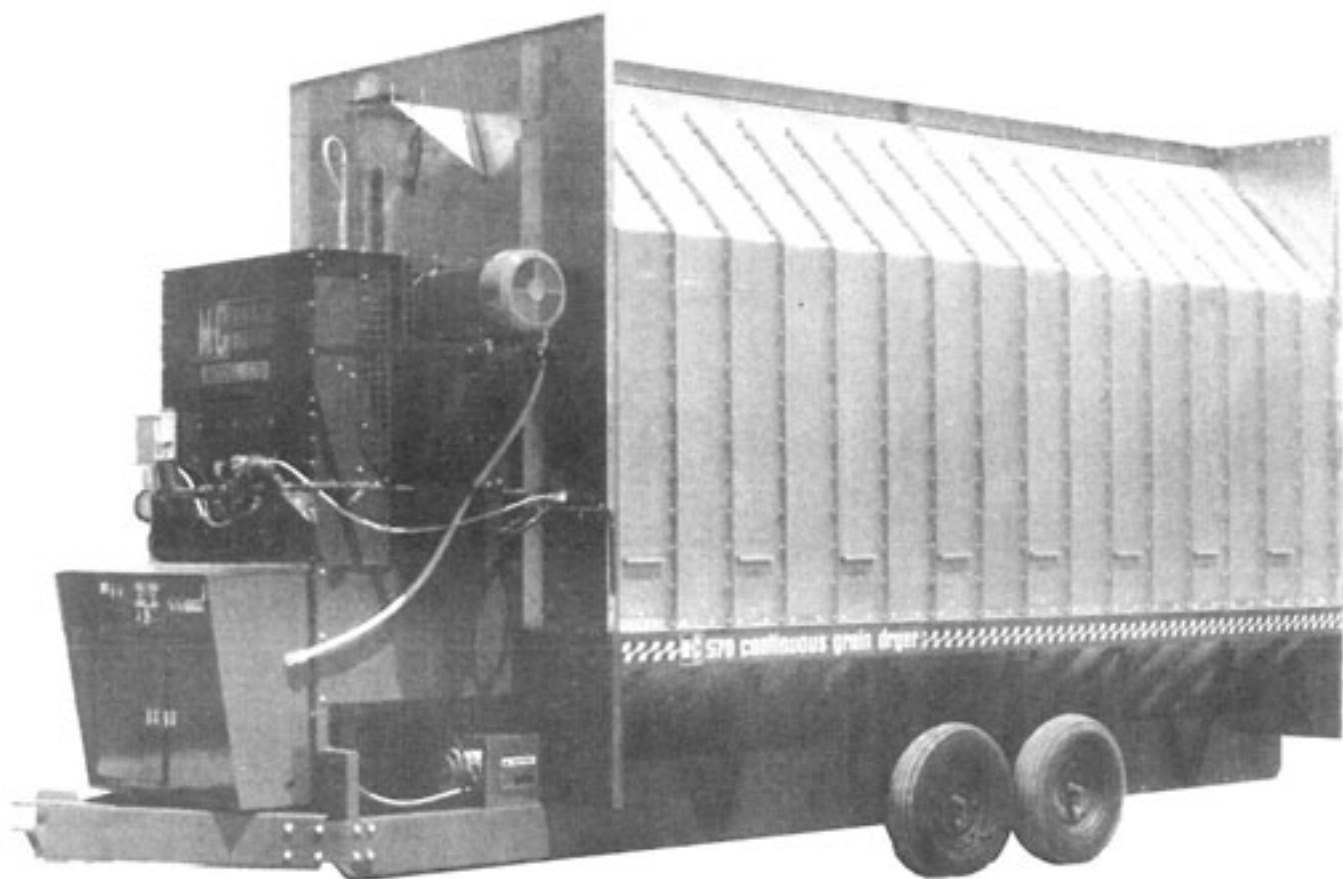


\$5.00



Model 370C & 570C Continuous Flow Grain Dryers

(Starting w/Serial No. 56525)



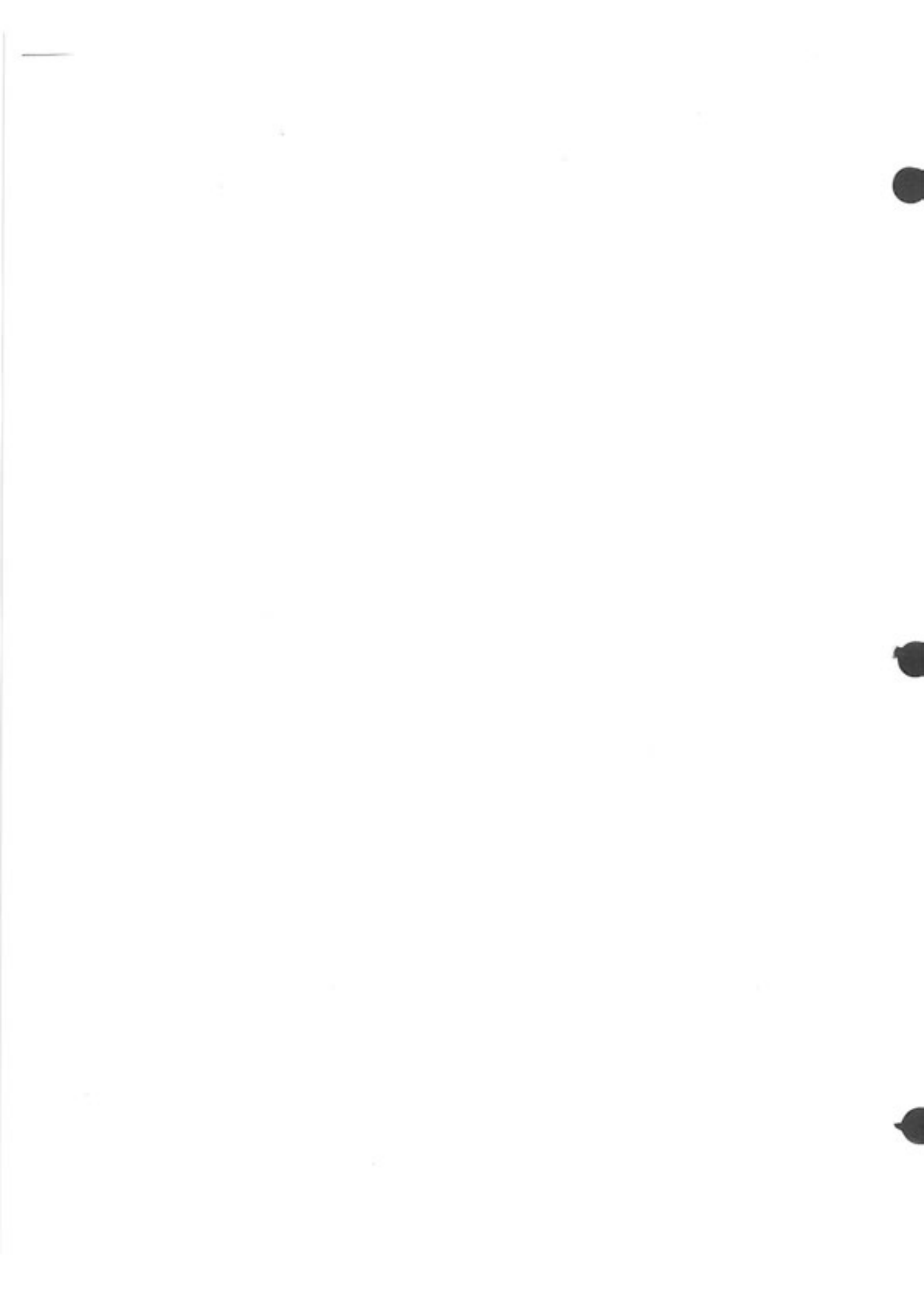
Model 570 C

PARTS CATALOG

Form No. D 341 June 1998

Mathews Company /

500 Industrial Avenue
P.O. Box 70, Crystal Lake, IL 60039-0070
815/459-2210 FAX 815/459-5889



CONTENTS

| | Page |
|---|----------------|
| Introduction | |
| Parts Ordering Instructions | 1 |
| Model and Serial Number Location | 1 |
| Capscrew Grade Identification | 1 |
| Parts | |
| Air Pressure Switch | 29 |
| Augers | |
| Level | 30-31 |
| Unload | 2-7 |
| Belts | |
| Fan | 24-25 |
| Level Auger | 30-31 |
| Unload Auger | 14 |
| Burner | 16-17 |
| Circuit Breakers - Level Auger, Unload Auger & Fan Motor | 32 |
| Coils | |
| Magnetic Starters - 110/115V | 33 |
| 1 ¼" Solenoid Valve | 19 |
| ½" Solenoid Valve | 18 |
| Contacts - For Magnetic Starters | 33 |
| Control Cabinet | 22-23 |
| Control Panel Lights, Switches and Controls | 20-21 |
| Decals | 9, 13, 23 & 26 |
| Electrical Components in 110/115V Control Cabinet Section | 20-21 |
| Electrode | 16 |
| End Panels - 370 & 570 | 12-13 |
| Fan | 24-25 |
| Fan Housing | 26-27 |
| Fan Motor | 24-32 |
| Fan Motor Mount | 24 |
| Flame Sensing Probe | 16 |
| Floor Panels - 370 & 570 | 12 |
| Guards | |
| Fan | 15 |
| Level Auger Motor | 30-31 |
| SCR Drive | 15 |
| High Limit Switch | 29 |

Continued on next page

| | Page |
|---|-------|
| Hoppers | |
| 370 Standard | 28 |
| 570 Standard | 30 |
| Ignition Board | 20 |
| Ignition Wires | 16 |
| Interlocks - For Magnetic Starters | 33 |
| Jumper Straps - For Magnetic Starters | 33 |
| Level Auger | |
| Belts | 30-31 |
| Motor | 30-31 |
| Motor Mount | 30-31 |
| Switch Assembly | 29 |
| Lights, Control Panel | 21 |
| LP Gas Liquid Line Piping | 18 |
| LP Gas Manifold and Piping | 19 |
| Magnetic Starters | 32 |
| Manifolds - LP & Natural Gas | 19 |
| Metering Rolls | 2-7 |
| 370 | 2-3 |
| 570 | 4-7 |
| Mixing Chambers | 34 |
| Modulating Valves | 19 |
| Modulating Valve Power Elements | 19 |
| Moisture Control | |
| M-C Moisture Control Board | 20 |
| Potentiometer | 21 |
| Thermistor Sensor | 29 |
| Natural Gas Manifold and Piping | 19 |
| Portabilities | 35 |
| Pressure Gauge (Gas) | 19 |
| Pressure Regulator (LP Gas) | 19 |
| Relay | 20 |
| Relief Valve - LP Gas | 18 |
| SCR Drive Unload System | |
| Control Board | 20 |
| Motor and Gear Box | 14-15 |
| Potentiometer | 21 |

Continued on next page

| | Page |
|--|------|
| Screens | |
| Base Screens | 9 |
| Upper Screens | 10 |
| Solenoid Valves | |
| 1 ¼" - LP & Natural Gas | 19 |
| ½" - LP Gas | 18 |
| Switches, Control Panel | 21 |
| Terminal Blocks | 20 |
| Thermistor | 29 |
| Thermometer | 27 |
| Timers | |
| 10 Second - Ignition | 20 |
| 2 to 180 Second Adjustable - Level Auger | 20 |
| 60 Minute Adjustable - Low Grain Level | 20 |
| 60 Minute Adjustable Cold Grain Shutdown | 20 |
| Unload Auger | |
| Auger | 2-7 |
| Belts | 14 |
| Motor | 14 |
| Pans | 8 |
| 10" Auger Extension Kits | 36 |
| Vaporizer Coil - LP Gas | 16 |
| Walkway (Optional) | 37 |

NOTES

NOTES

INTRODUCTION

Parts Ordering Instructions

1. Order parts from your local M-C Dealer or distributor.
2. Always furnish the Grain Dryer model and serial number. This information is stamped on the serial number plate.
3. When ordering parts be sure to furnish the part number, description and quantity required.

NOTE: Attaching hardware is listed (but not included) with the main part. It must be ordered separately.

4. Inspect all shipments upon receipt. If any packages and/or boxes are missing, or parts are damaged, file a claim with the carrier immediately. Failure to do so may void a claim. Check the shipment against the packing list carefully. Report any shortages to the shipper immediately.
5. Do not return any parts to the Mathews Company without a "Return Goods Authorization" from the factory. All return parts shipments must be shipped prepaid (COD shipments will not be accepted). Shipments must also include the following:
 - A. A letter of explanation including the "Return Goods Authorization Number," your name and address.
 - B. A list of all parts being returned. List must include part numbers, description, quantity, and original invoice number.

Model and Serial Number Location

The model and serial number of your Grain Dryer are stamped on a plate located on the left front base panel, see Figure 1. On earlier production dryers, the plate is on the dryer front end panel

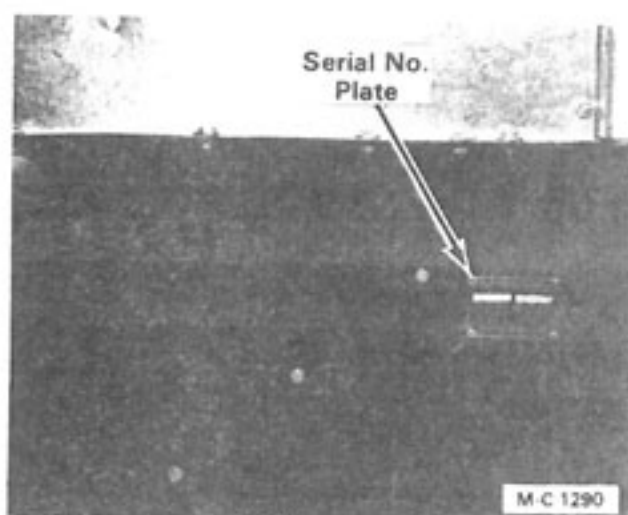


Figure 1

| M-C FARM EQUIPMENT | |
|--------------------|------------|
| MODEL NO. | SERIAL NO. |
| | |

Figure 2

just above the location shown in Figure 1. Record the model and serial number in the blank spaces in Figure 2.

Capscrew Grade Identification

There are four grades of hex-head capscrews. Grade 1 and 2 are common capscrews, grade 5 and 8 are used when greater strength is required. Each grade can be identified by the marking on the head of the capscrew, see chart below.

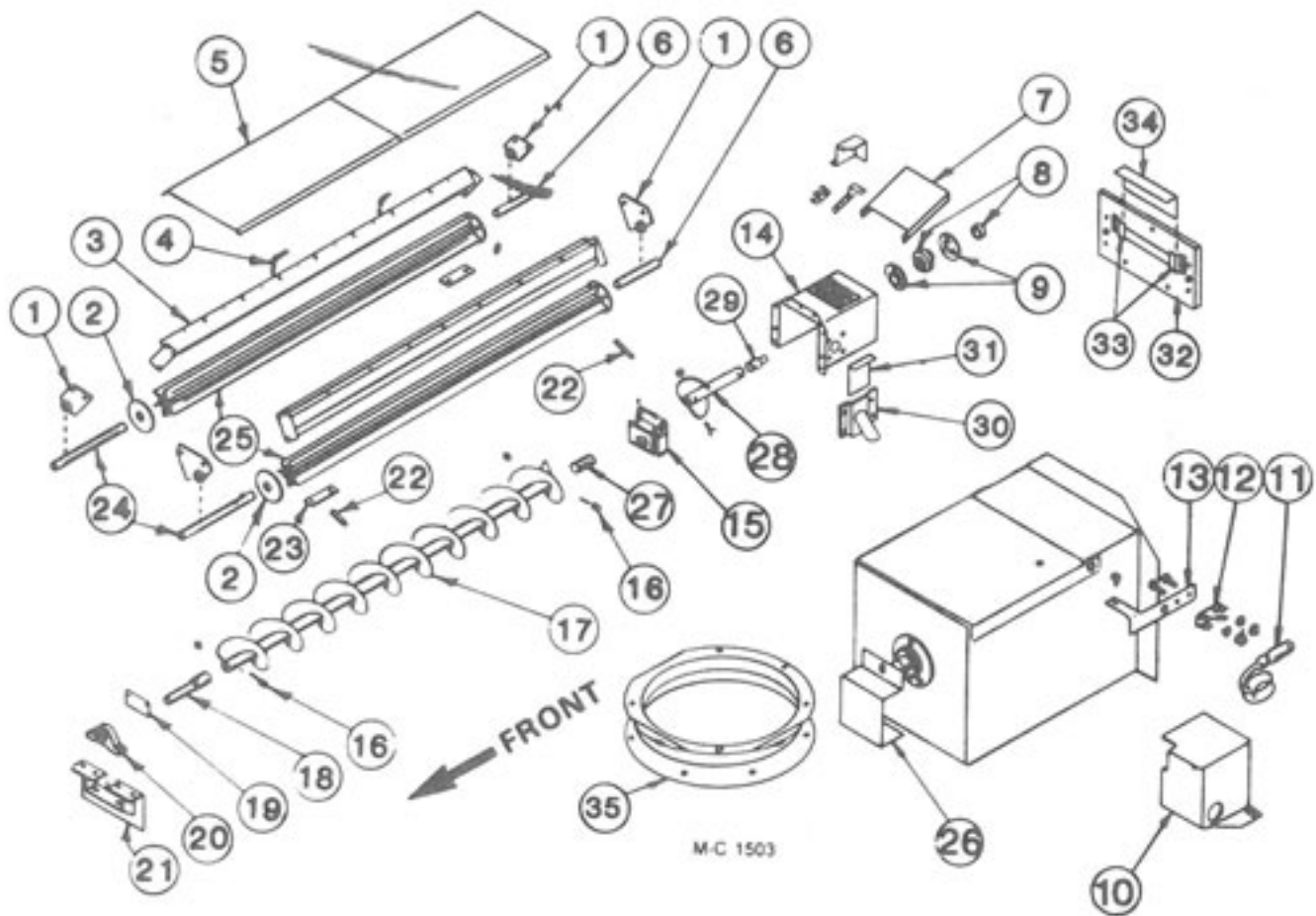
When replacing capscrews, be sure to use the correct size and grade. If a specific grade is not shown as part of the description, the capscrew is a grade 1 or 2.

CAPSCREW GRADE IDENTIFICATION CHART

| SAE Grade | Description | Capscrew Head Marking* |
|-----------|---|------------------------|
| 1 | WILL HAVE A PLAIN HEAD - NO RADIAL LINES | |
| 2 | Low or Medium Carbon Steel Not Heat Treated | |
| 5 | WILL HAVE 3 RADIAL LINES Quenched and Tempered Medium Carbon Steel | |
| 8 | WILL HAVE 6 RADIAL LINES Quenched and Tempered Special Carbon or Alloy Steel | |

*The center marking identifies the capscrew manufacturer.

370 METERING ROLLS AND UNLOAD AUGER



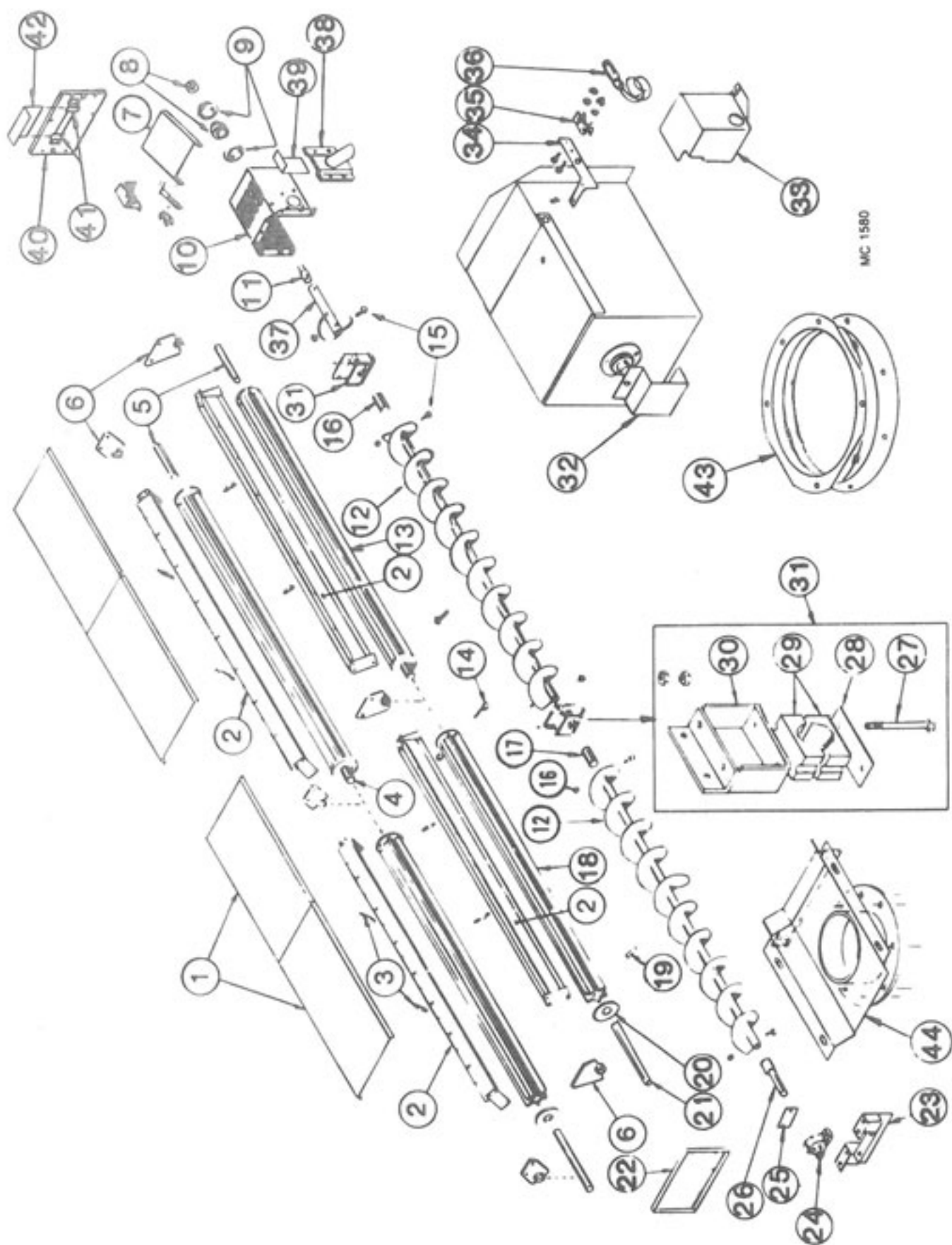
| Ref. | Part No. | Qty. | Description |
|------|----------|------|--|
| 1 | 128 1063 | 4 | Metering Roll Bearing w/Bronze Bushing |
| | 001 8202 | 8 | 5/16-18 x 3/4" Hex Bolt |
| | 000 8169 | 8 | 5/16-18 Flanged Locknut |
| 2 | 121 4438 | AR | Metering Roll Washer - 11 Gauge |
| | 128 4970 | AR | Metering Roll Washer - 16 Gauge |
| 3 | 128 0350 | 2 | Inner Screen Mount |
| | 001 8202 | 12 | 5/16-18 x 3/4" Hex Bolt |
| | 000 8169 | 12 | 5/16-18 Flanged Locknut |
| 4 | 128 8958 | 4 | Support Rod (3/8"x4 3/8") |
| | 000 8173 | 4 | 5/16" Flatwasher |
| | 000 8168 | 12 | 5/16-18 Flanged Locknut |
| 5 | 128 2890 | 2 | Unload Auger Cover |
| | 001 8111 | 4 | 5/16-18 Clip Nut |
| | 001 8114 | 4 | 5/16-18 x 3/4" Wing Screw |
| | 000 8173 | 4 | 5/16" Flatwasher |

| Ref. | Part No. | Qty. | Description |
|------|----------|------|--|
| 6 | 121 5042 | 2 | Metering Roll Stub Shaft (Rear) 1 1/4" x 5" (press fit in metering roll) |
| 7 | 128 4712 | 1 | Over Load Door |
| | 001 8210 | 2 | 5/16-18 x 3/4" Hex Bolt |
| | 000 8205 | 2 | 5/16-18 Top Lock Flanged Nut |
| 8 | 001 6003 | 1 | 1 1/4" Bearing w/Lock Collar |
| 9 | 001 6004 | 2 | 1 1/4" Bearing Flangette |
| | 001 8210 | 3 | 5/16-18 x 3/4" Hex Bolt |
| | 000 8168 | 3 | 5/16-18 Flanged Locknut |
| 10 | 128 4896 | 1 | Shut-Off Switch Cover |
| | 001 8284 | 2 | 5/16-12 x 1/2" Self-Tapping Screw |
| 11 | 120 6800 | 1 | Shut Off Switch |
| 12 | 120 6801 | 1 | Switch Mount Clip |
| | 000 8282 | 2 | 6-32 x 1/4" Machine Screw |
| | 000 8185 | 2 | 6-32 Flanged Locknut |

370 METERING ROLLS AND UNLOAD AUGER

| Ref. | Part No. | Qty. | Description |
|------|----------|------|--|
| 13 | 128 2937 | 1 | Switch Mount |
| 14 | 128 0345 | 1 | Unload Auger Discharge |
| | 001 8202 | 6 | 3/8-16 x 3/4" Hex Washer Head Bolt - Grd. 5 |
| | 000 8169 | 6 | 3/8-16 Flanged Locknut |
| 15 | 122 1007 | 1 | Unload Hanger Bearing Kit |
| 16 | 000 8229 | 8 | 3/8-16 x 2 3/4" Capscrew - Grd. 5 |
| | 000 8205 | 8 | Top-Lock Flange Nut |
| 17 | 128 0244 | 1 | Unload Auger (10") |
| 18 | 124 5610 | 1 | Unload Auger Input Shaft |
| 19 | 128 3008 | 1 | Front Seal Plate |
| | 000 8184 | 4 | 8-18 x 1/2" Sheet Metal Screw |
| 20 | 001 6011 | 1 | 1-7/16" Bore Pillow Block Bearing |
| | 001 8299 | 2 | 1/2"-13 x 1 3/4" Capscrew - Grd. 8 w/Nylock |
| | 001 8257 | 2 | 1/2" SAE Flatwasher |
| | 000 8163 | 2 | 1/2-13 Hex Nut |
| 21 | 128 0247 | 1 | Unload Auger Front Plate |
| | 001 8210 | 4 | 3/8-16 x 3/4" Hex Washer Head Bolt - Grd. 5 |
| | 000 8168 | 4 | 3/8-16 Flanged Locknut |
| 22 | 000 8259 | 2 | Roll Pin 5/16 x 1 3/4" |
| 23 | 121 2637 | 2 | Clean-Out Cover |
| | 000 8168 | 4 | 3/8-16 Flanged Locknut |
| 24 | 128 5042 | 2 | Metering Roll Shaft (Front) 1 1/4" x 13 1/4" (press fit in metering roll) |
| 25 | 128 1186 | 2 | Metering Roll Assembly (Incl. shafts) |
| 26 | 128 3011 | 1 | Stub Shaft Guard |
| 27 | 128 5618 | 1 | Unload Auger Link |
| 28 | 128 0309 | 1 | Standard Auger |
| 29 | 124 5611 | 1 | Unload Auger Output Shaft |
| 30 | 128 0341 | 1 | Grain Sampler |
| 31 | 128 2842 | 1 | Slide Gate Door - Sampler |
| 32 | 128 2954 | 1 | Base Panel Access Door w/Slot |
| 33 | 128 2885 | 2 | Access Door Bracket |
| 34 | 128 2887 | 1 | Access Door Slot Cover |
| 35 | 128 0343 | 1 | Discharge Ring (10") |

570 METERING ROLLS AND UNLOAD AUGER



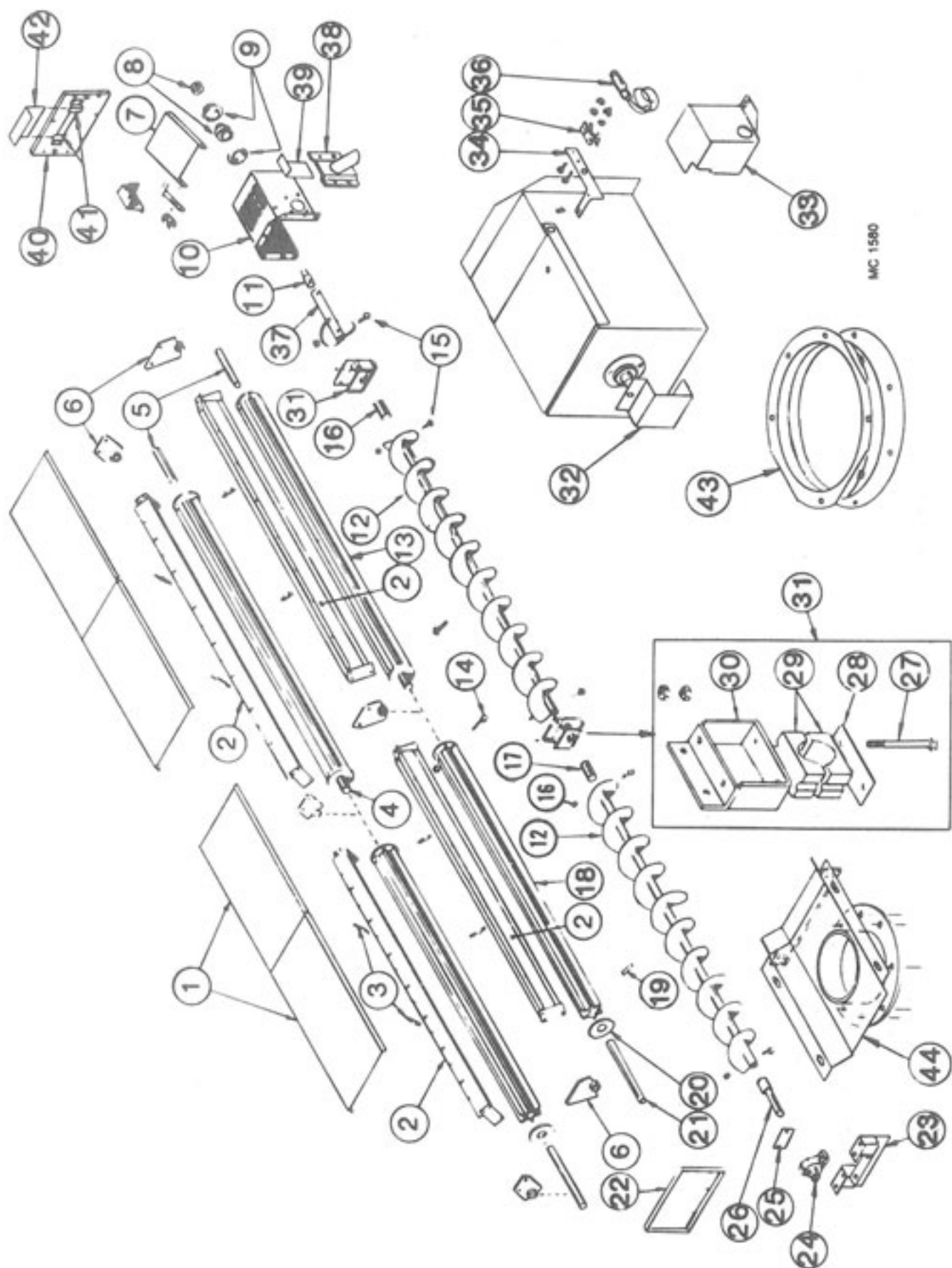
570 METERING ROLLS AND UNLOAD AUGER

| Ref. | Part No. | Qty. | Description | Ref. | Part No. | Qty. | Description |
|------|----------|------|---|------|----------|------|---|
| 1 | 128 2890 | 4 | Unload Auger Cover | 12 | 128 0244 | 2 | Unload Auger Section (10") |
| | 001 8111 | 8 | 5/16-18 Clip Nut | 13 | 121 1082 | 2 | Rear Metering Roll Assembly (Incl. shafts) |
| | 001 8202 | 8 | 5/16-18 x 3/4" Hex Washer Head Bolt | 14 | 000 8114 | 2 | 5/16-18 x 2 1/2" Capscrew |
| | 000 8173 | 8 | 5/16" Flatwasher | | 000 8222 | 2 | 5/16" Lockwasher |
| 2 | 128 0350 | 4 | Inner Screen Mount | | 000 8159 | 2 | 5/16-18 Hex Nut |
| | 001 8202 | 18 | 5/16-18 x 3/4" Hex Washer Head Bolt | 15 | 000 8229 | 8 | 3/8-16 x 2 3/4" Capscrew-Grd. 5 |
| | 000 8169 | 18 | 5/16-18 Flanged Locknut | 16 | 000 8205 | 8 | Top Lock Flange Nut |
| 3 | 128 8958 | 8 | Support Rod (3/8" x 4-3/4") | 17 | 128 5618 | 1 | Unload Auger Link |
| | 000 8173 | 8 | 5/16" Flatwasher | 18 | 128 1254 | 2 | Front Metering Roll Assembly (Incl. shaft) |
| | 000 8168 | 24 | 3/8-16 Flanged Locknut | 19 | 000 8259 | 3 | Roll Pin 5/16" x 1 3/4" |
| 4 | 121 5043 | 2 | Center Metering Roll Shaft - 1 1/4" x 7" (press fit in metering roll) | 20 | 121 4438 | 4 | Metering Roll Washer-11 Gauge |
| 5 | 121 5042 | 2 | Rear Metering Roll Stub Shaft - 1 1/4" x 5" (press fit in metering roll) | | 128 4970 | 4 | Metering Roll Washer-16 Gauge |
| 6 | 128 1063 | 6 | Metering Roll Brg. w/Bronze Bushing | 21 | 128 5042 | 2 | Front Metering Roll Shaft - 1 1/4" x 13 1/4" (press fit in metering roll) |
| | 001 8202 | 12 | 5/16-18 x 3/4" Hex Washer Head Bolt | | | | |
| | 000 8169 | 12 | 5/16-18 Flanged Locknut | 22 | 128 2894 | 2 | Base Panel Access Door (17 1/2" x 10 1/2") |
| 7 | 128 4712 | 1 | Over Load Door | | 001 8284 | 14 | 5/16-12 x 1/2" Self Tapping Screw |
| | 001 8210 | 2 | 3/8-16 x 3/4" Hex Washer Head Bolt | 23 | 128 0247 | 1 | Unload Auger Front Plate |
| | 000 8205 | 2 | 3/8-16 Top Lock Flanged Nut | | 001 8210 | 4 | 3/8-16 x 3/4" Hex Washer Head Bolt |
| 8 | 001 6003 | 1 | 1 1/4" Bearing w/Lock Collar | | 000 8168 | 4 | 3/8-16 Flanged Locknut |
| 9 | 001 6004 | 2 | 1 1/4" Bearing Flangette | 24 | 001 6011 | 1 | 1-7/16" Bore Pillow Block Bearing |
| | 001 8209 | 3 | 3/8-16 x 1" Hex Washer Head Bolt | | 001 8299 | 2 | 1/2-13 x 1 3/4" Capscrew-Grd. 8 w/Nylock |
| | 000 8168 | 3 | 3/8-16 Flanged Locknut | | 001 8257 | 2 | 1/2" SAE Flatwasher |
| 10 | 128 0328 | 1 | Unload Auger Discharge Round (Front Unload - See Note 1) | | 000 8163 | 2 | 1/2-13 Hex Nut |
| | 001 8210 | 6 | 3/8-16 x 3/4" Hex Washer Head Bolt | | | | |
| | 000 8205 | 6 | 3/8-16 Top Lock Flanged Nut | | | | |
| 11 | 124 5611 | 1 | Unload Auger Output Shaft | | | | |

NOTE 1: Dryers w/Front Unload - Use Kit #127 9119.

Continued on next page

570 METERING ROLLS AND UNLOAD AUGER

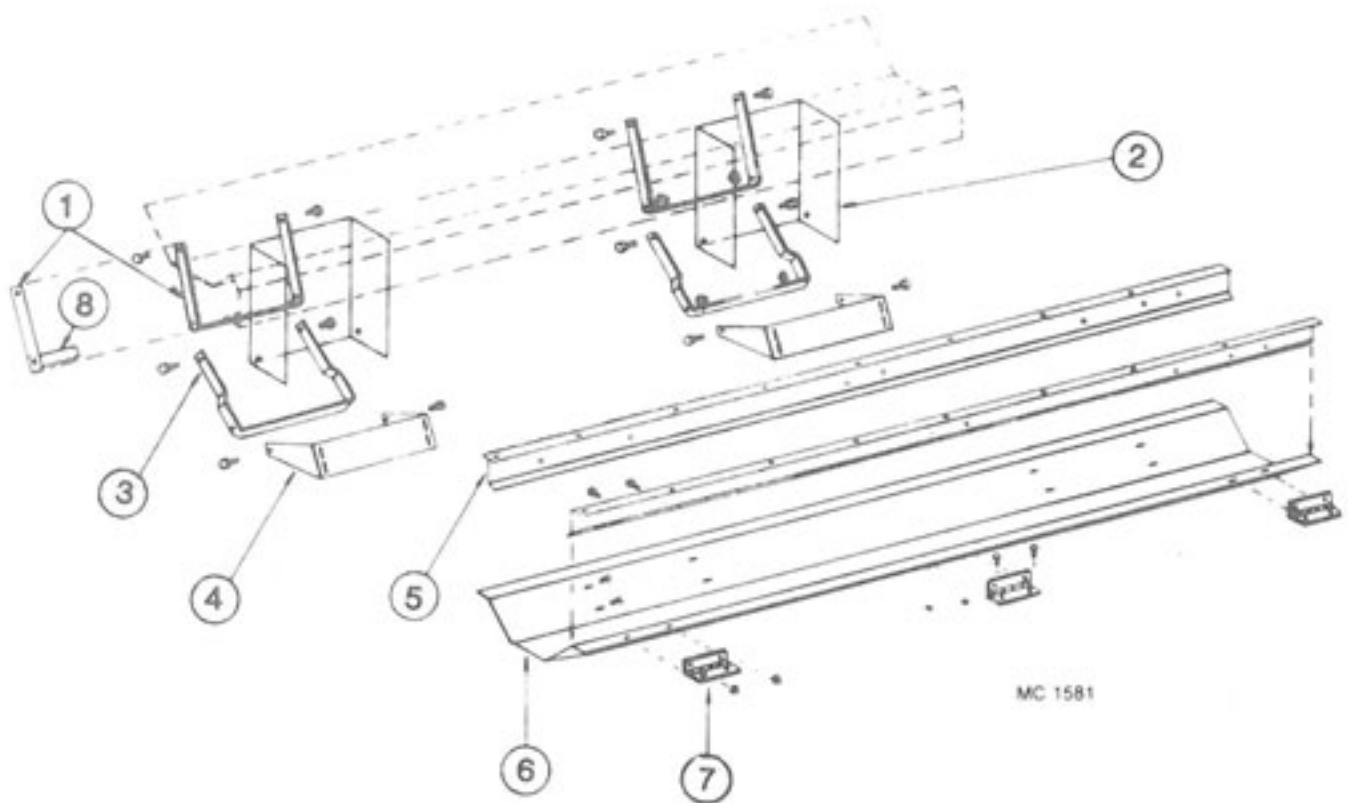


MC 1580

570 METERING ROLLS AND UNLOAD AUGER

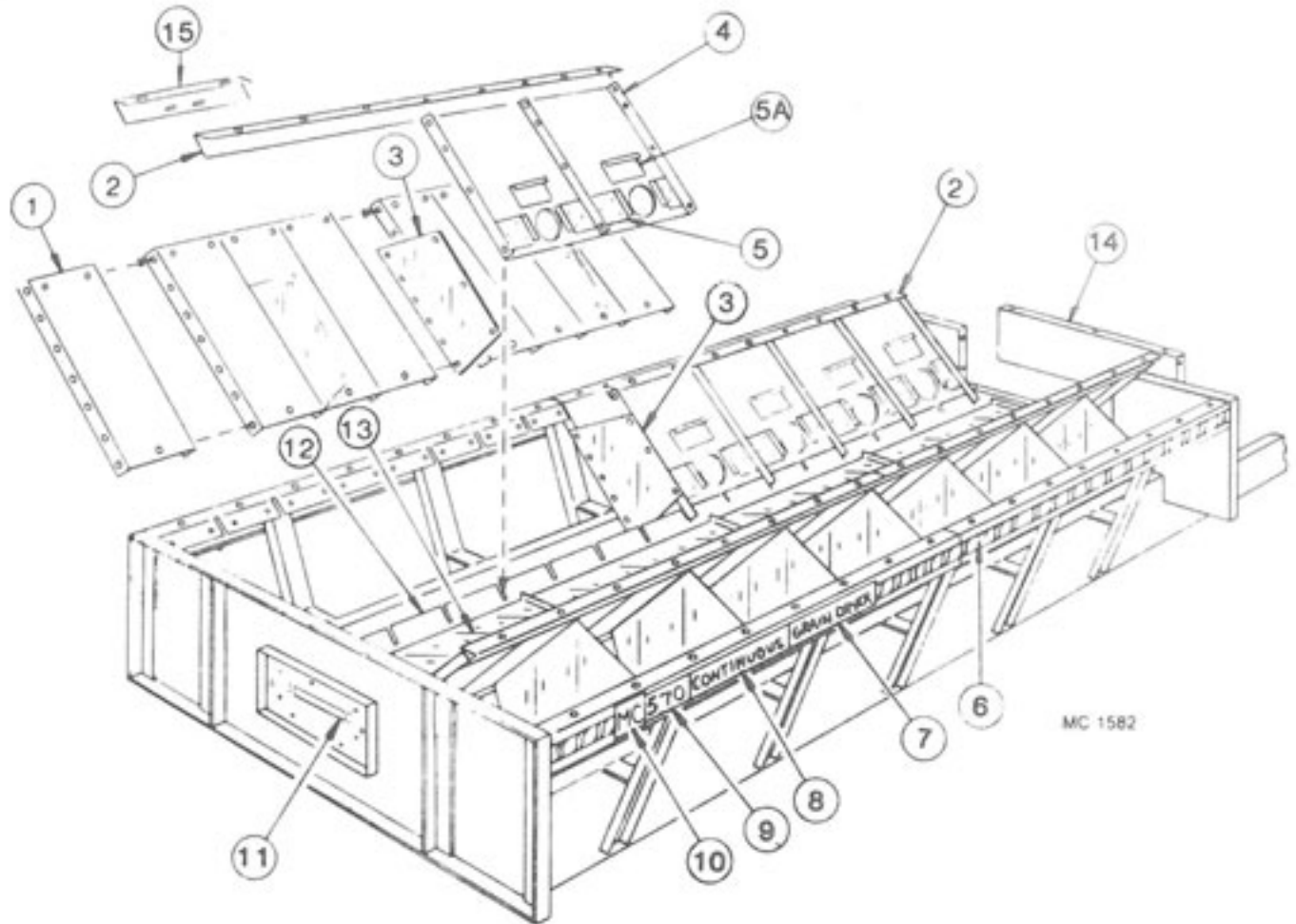
| Ref. | Part No. | Qty. | Description |
|------|----------|------|---|
| 25 | 128 3008 | 1 | Front Seal Plate |
| | 000 8184 | 4 | 8-18 x 1/2" Sheet Metal Screw |
| 26 | 124 5610 | 1 | Unload Auger Input Shaft |
| 27 | 001 8168 | 2 | 1/2-13 x 4 1/2" Capscrew - Grd. 5 |
| | 000 8163 | 4 | 1/2-13 Hex Nut |
| 28 | 128 4250 | 1 | Unload Auger Mid Brg. Support |
| 29 | 128 6020 | 1 | Wood Brg. 1-5/16" (2 Halves) |
| 30 | 128 0287 | 1 | Unload Auger Brg. Brkt. |
| | 000 8137 | 2 | 1/2-13 x 1 1/4" Capscrew - Grd. 5 |
| | 000 8180 | 2 | 1/2" Lockwasher |
| | 000 8163 | 2 | 1/2-13 Hex Nut |
| 31 | 122 1007 | 2 | Unload Auger Brg. Kit (Incl. Ref. 27 thru 30 in quantities reqd. for one brg.) |
| 32 | 128 3011 | 1 | Stub Shaft Guard |
| 33 | 128 4896 | 1 | Shut-Off Switch Cover |
| | 001 8284 | 2 | 5/16-12 x 1/2" Self-Tapping Screw |
| 34 | 128 2937 | 1 | Switch Mount |
| 35 | 120 6801 | 1 | Switch Mount Clip |
| | 000 8282 | 2 | 6-32 x 1/4" Machine Screw |
| | 000 8185 | 2 | 6-32 Flanged Locknut |
| 36 | 120 6800 | 1 | Shut Off Switch |
| 37 | 128 0309 | 1 | Standard Auger Weld |
| 38 | 128 0341 | 1 | Grain Sampler |
| 39 | 128 2842 | 1 | Slide Gate Door - Sampler |
| 40 | 128 2954 | 1 | Base Panel Access Door w/Slot |
| 41 | 128 2885 | 2 | Access Door Bracket |
| 42 | 128 2887 | 1 | Access Door Slot Cover |
| 43 | 128 0343 | 1 | Discharge Ring (10") |
| 44 | 128 0331 | 1 | 10" Front Unload Auger Weldment (Optional) |

UNLOAD AUGER PANS



| Ref. Part No. | 370 Qty | 570 Qty. | Description |
|---------------|---------|----------|---------------------------|
| 1 128 2029 | 2 | 4 | Auger Dump Arm - Upper |
| 2 128 8355 | 2 | 4 | Warning Decal (not shown) |
| 3 128 2030 | 2 | 4 | Auger Dump Arm - Lower |
| 4 128 2751 | 2 | 4 | Bottom Link Pivot Base |
| 5 128 2673 | 2 | 4 | Pan Hinge Angle |
| 6 128 2752 | 1 | 2 | Auger Dump Pan |
| 7 128 8957 | 3 | 6 | Hinge |
| 8 128 2032 | 2 | 4 | Auger Dump Arm Handle |

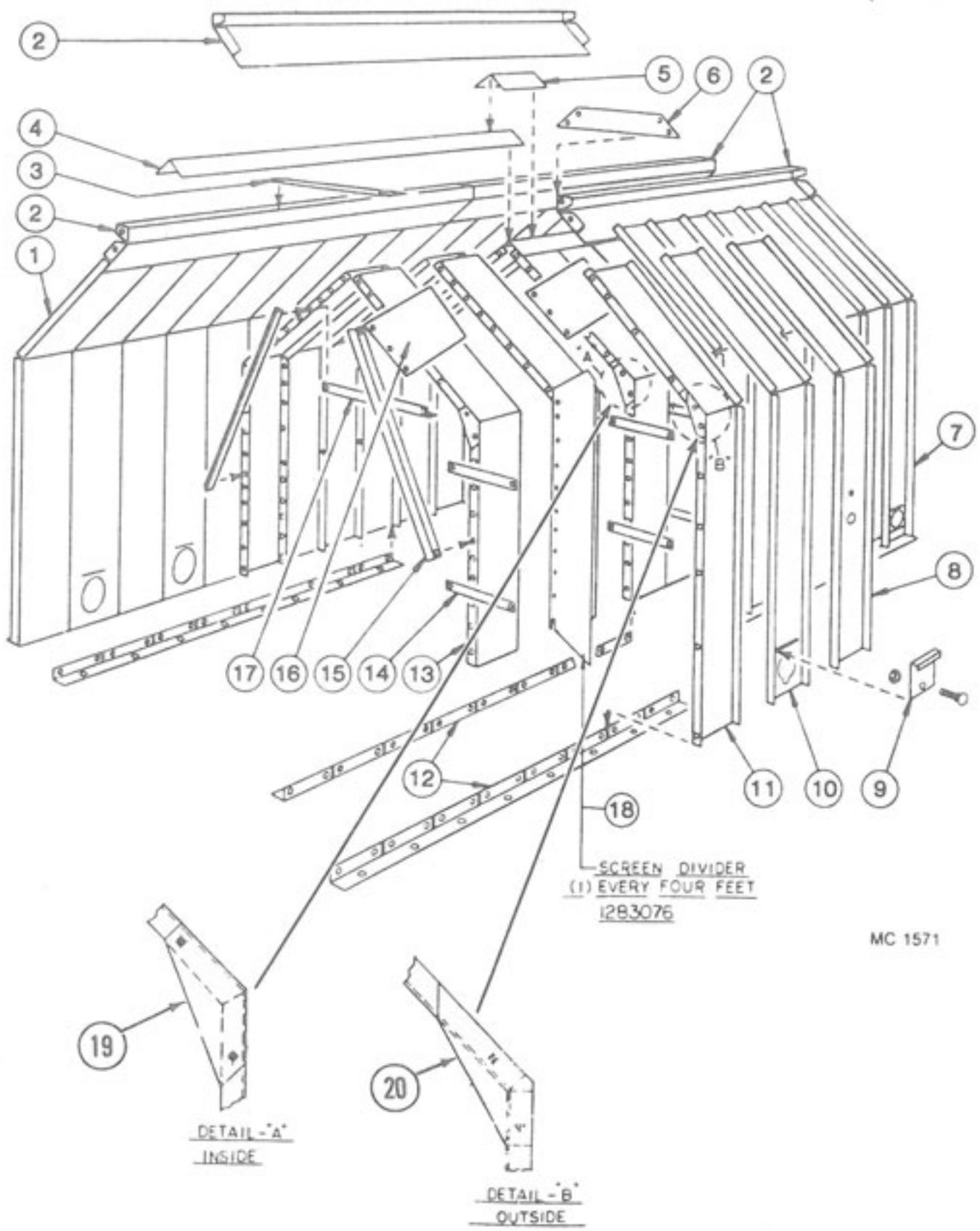
BASE SCREENS



| Ref. Part No. | 370 Qty | 570 Qty | Description | Ref. Part No. | 370 Qty | 570 Qty | Description |
|---------------|----------|---------|---|---------------|----------|---------|--|
| 1 | - | - | Lower Outer Screen | 10 | 128 8300 | 2 | 2 M-C Decal - 5" x 4-9/16" |
| | 127 2945 | 16 | 32 Small Seed (Galv.) .062" hole | 11 | 128 2954 | 1 | 1 Base Panel Access Door w/Slot |
| | 124 2019 | 16 | 32 Slotted (Galv.) .050" | | 001 8284 | 7 | 7 5/16-12 x 1/8" Self-Tapping Screw |
| 2 | 128 2739 | 2 | 4 Lower Screen Mount Angle | 12 | 128 0350 | 2 | 4 Inner Screen Mount |
| 3 | 128 2855 | 6 | 14 Lower Screen Stiffener | | 001 8202 | 12 | 18 5/16-18 x 3/4" Hex Washer Head Bolt |
| 4 | - | - | Lower Inner Slope Screen w/Clean-Out (24" wide) | | 000 8169 | 12 | 18 5/16-18 Flanged Locknut |
| | 124 2001 | 8 | 16 Small Seed (Galv.) .062" hole | 13 | 128 2890 | 2 | 4 Unload Auger Cover |
| | 124 2018 | 8 | 16 Slotted (Galv.) .050" | | 001 8111 | 4 | 8 5/16-18 Clip Nut |
| 5 | 124 2866 | 16 | 32 Slope Door Retainer | | 001 8114 | 4 | 8 5/16-18 x 3/4" Wing Screw |
| | 000 8244 | 48 | 96 8-18 x 1/2" Hex Head Sheet Screw | | 000 8173 | 4 | 8 5/16" Flatwasher |
| 5A | 128 3003 | 8 | 16 Slope Door (37" x 13 1/2") | 14 | 128 4570 | 1 | 1 Base Filler Panel-37x13 1/2" |
| 6 | 128 8310 | 7' | 24' Red & Yellow Stripe Decal - 2 1/2" | | 001 8209 | 12 | 12 3/8-16 x 1" Hex Washer Head Bolt Grd. 5 |
| 7 | 128 8309 | 2 | 2 "Grain Dryer" Decal | | 000 8168 | 12 | 12 3/8-16 Flanged Locknut |
| 8 | 128 8308 | 2 | 2 "Continuous" Decal | 15 | 120 3070 | - | 2 Seal Angle |
| 9 | 128 8376 | - | 2 "570" Base Decal | | | | |
| | 128 8374 | 2 | - "370" Base Decal | | | | |

UPPER SCREENS

Front of Dryer →

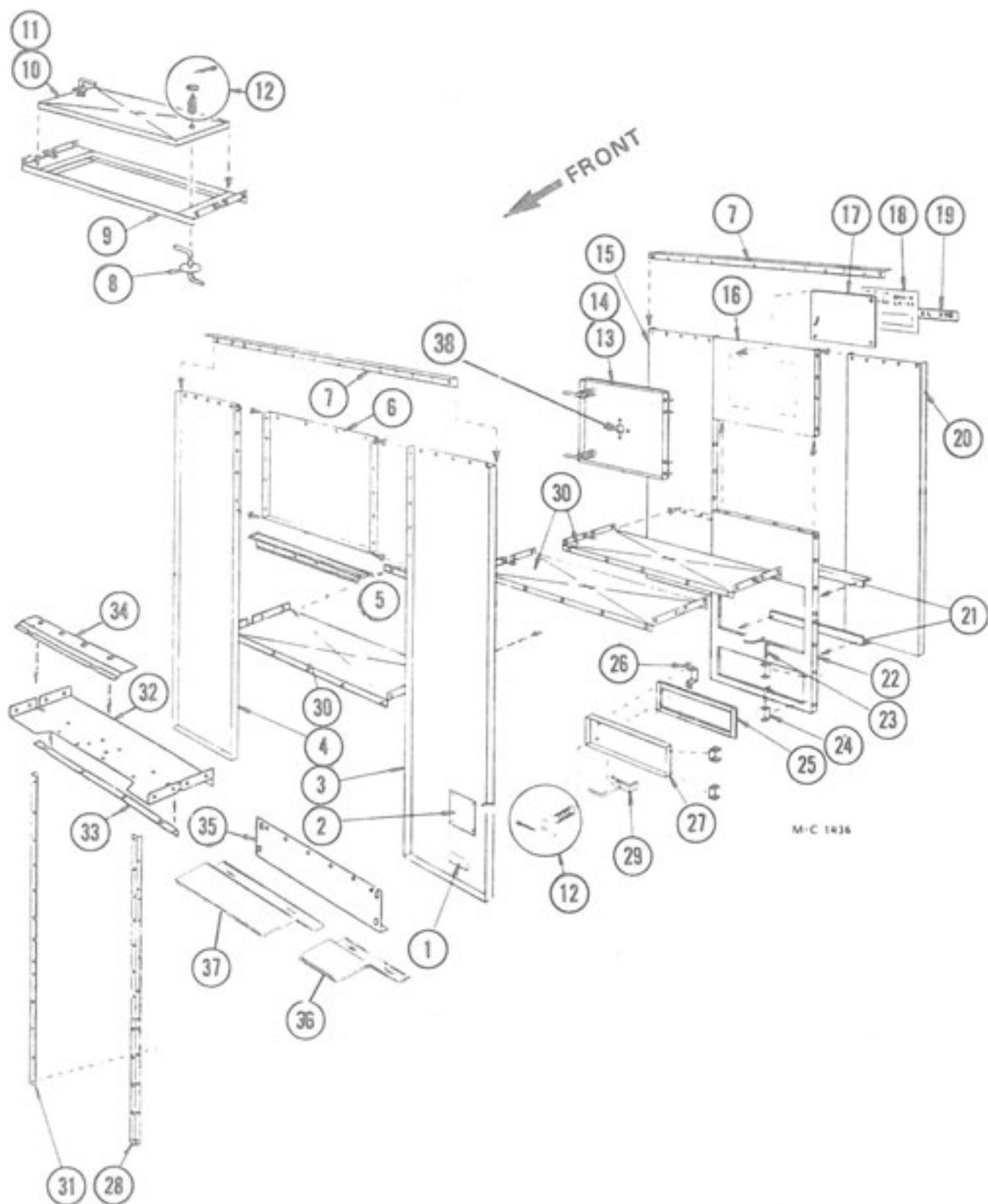


MC 1571

UPPER SCREENS

| Ref. | Part No. | 370 Qty. | 570 Qty. | Description |
|------|----------|----------|----------|--|
| 1 | ---- | - | - | Outer End Screen w/o Quick Drain |
| | 021 2946 | 2 | 2 | Galvanized (Std.) .094" (2.38mm) Hole |
| | 127 2967 | 2 | - | Small Seed (Galv.) .062" (1.59mm) Hole |
| | 123 5213 | 2 | 2 | Aluminum .094" (2.38mm) Hole |
| | 124 2006 | 2 | 2 | Canola (Aluminum) .062" (1.59mm) Hole |
| | 124 2022 | 2 | 2 | Canola (Galv.) Slotted .050 x 5/16" (1.27 x 7.94mm.) |
| 2 | 129 2832 | 2 | 4 | Hopper Joiner Angle Galvanized (Std.) |
| | 124 2014 | 2 | 4 | Hopper Joiner Angle Small Seed/Canola (Galv.) |
| 3 | 129 2947 | 2 | 2 | Stiffener Strap |
| 4 | 021 2950 | 1 | 2 | Hopper Cap |
| 5 | 128 3075 | - | 1 | Seal Angle |
| 6 | 129 2831 | - | 1 | Joiner Plate |
| 7 | ---- | - | - | Outer End Screen w/Quick Drain |
| | 128 3002 | 2 | 2 | Galvanized (Std.) |
| | 127 2963 | - | - | Small Seed (Galv.) |
| | 123 5210 | 2 | 2 | Aluminum |
| | 124 2007 | 2 | 2 | Canola (Aluminum) |
| | 124 2021 | 2 | 2 | Canola (Galv.) Slotted |
| 8 | ---- | - | - | Moisture Control Screen |
| | 021 2947 | 1 | 1 | Galvanized (Std.) |
| | 127 2966 | - | - | Small Seed (Galv.) |
| | 123 5214 | 1 | 1 | Aluminum |
| | | 1 | 1 | Canola (Aluminum) |
| 9 | ---- | - | - | Quick Drain Door |
| | 127 2950 | 8 | 16 | Galvanized (Std.) |
| | 127 2974 | - | 16 | Small Seed (Galv.) |
| | | | | Canola (Aluminum) |
| | 001 8269 | 8 | 16 | 3/16-16 x 3/4" Carriage Bolt |
| | 000 8168 | 8 | 16 | 3/16-16 Flanged Locknut |
| 10 | ---- | - | - | Outer Screen w/Quick Drain |
| | 128 3001 | 6 | 14 | Galvanized (Std.) |
| | 127 2965 | - | 14 | Small Seed (Galv.) |
| | 123 5212 | 6 | 14 | Aluminum |
| | 124 2007 | 6 | 14 | Canola (Aluminum) |
| | 124 2021 | 6 | 14 | Canola (Galv.) Slotted |
| 11 | ---- | - | - | Outer Screen w/o Quick Drain |
| | 021 2945 | 5 | 13 | Galvanized (Std.) |
| | 127 2964 | - | 14 | Small Seed (Galv.) |
| | 123 5211 | 5 | 13 | Aluminum |
| | 124 2006 | 5 | 13 | Canola (Aluminum) |
| | 124 2022 | 5 | 13 | Canola (Galv.) Slotted |
| 12 | 125 2732 | 4 | 8 | Screen Mount Angle |
| 13 | ---- | - | - | Inner Screen |
| | 021 2949 | 16 | 32 | Galvanized (Std.) |
| | 127 2968 | 16 | 32 | Small Seed (Galv.) |
| | 124 2020 | 16 | 32 | Canola (Galv.) Slotted |
| 14 | 121 3007 | 28 | 60 | Stiffener Strap |
| 15 | 128 2663 | 6 | 14 | Inner Brace |
| 16 | 128 3072 | 14 | 30 | Peak Screen Stiffener |
| 17 | 021 2600 | 3 | 7 | Inner Cross Tie |
| 18 | 128 3076 | 2 | 6 | Screen Divider |
| 19 | 128 3080 | 14 | 30 | Inner Screen Joint Seal (used w/canola screens only) |
| 20 | 128 3079 | 14 | 30 | Outer Screen Joint Seal (used w/canola screens only) |

END PANELS AND FLOOR PANELS (Model 370 & 570C)

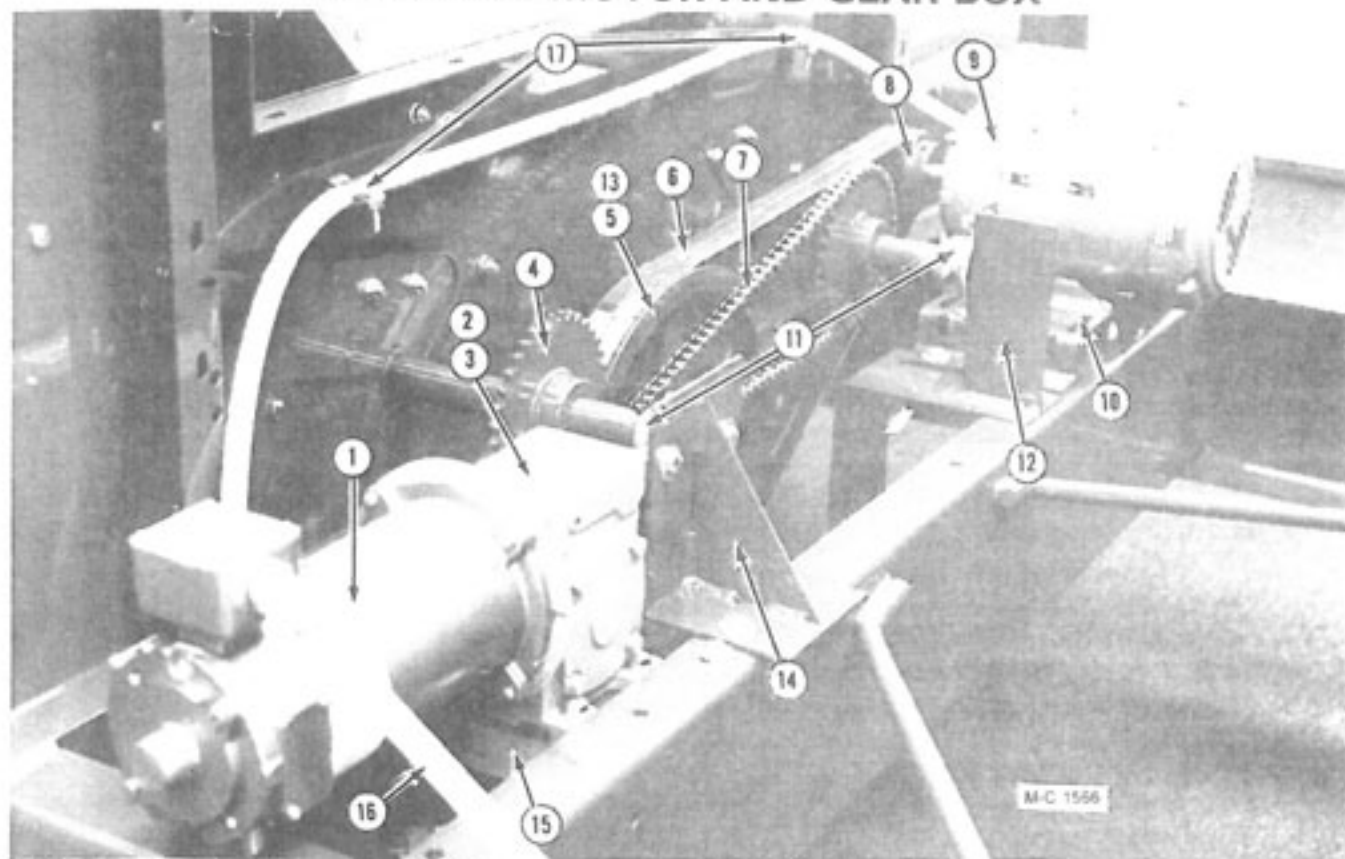


END PANELS AND FLOOR PANELS (Model 370 & 570C)

| Ref. | Part No. | 370 570 | | Description |
|------|----------|---------|------|--|
| | | Qty | Qty. | |
| 1 | 121 8310 | 1 | 1 | Made in USA - Decal |
| 2 | 127 8300 | 1 | 1 | CGA Dryer Plate (Canada Only) |
| 3 | 126 2831 | 1 | 1 | Left Front Panel |
| 4 | 126 2830 | 1 | 1 | Right Front Panel |
| 5 | 128 2644 | 1 | 1 | Fan Housing Mount - Top |
| 6 | 126 2832 | 1 | 1 | Front Panel Above Fan |
| 7 | 128 2635 | 2 | 2 | End Panel to Hopper Joiner Angle |
| 8 | 121 0302 | 2 | 2 | Latch and Handle |
| 9 | 121 0299 | 1 | 2 | Heat Chamber Door Frame |
| 10 | 121 1113 | 1 | 2 | Heat Chamber Door Assembly (Incl. ref. 12) |
| 11 | 121 2970 | 1 | 2 | Heat Chamber Door Panel |
| 12 | 001 8256 | 5 | 5 | Spring - 5/8" ID x 2" |
| | 000 8174 | 5 | 5 | 3/8" Flatwasher |
| | 000 8199 | 5 | 5 | 1/8" x 1" Cotter Pin |
| 13 | 128 1183 | 1 | 1 | Rear Door Assembly (Incl. ref.) |
| 14 | 128 2957 | 1 | 1 | Rear Door Panel |
| 15 | 021 2832 | 1 | 1 | Right Rear End Panel |
| 16 | 128 2919 | 1 | 1 | Panel Above Top Rear Door |
| 17 | 128 2999 | 1 | 1 | Decal Mount Plate |
| 18 | 128 8331 | 1 | 1 | Large Decal - 975 - See NOTE |
| 19 | 128 8373 | 1 | 1 | 370 Model Decal |
| | 128 8375 | 1 | 1 | 570 Model Decal |
| 20 | 021 2833 | 1 | 1 | Left Rear End Panel |
| 21 | 124 4463 | 2 | 2 | Brace, Rear Door Frame |
| 22 | 128 2755 | 1 | 1 | Dryer Rear Door Frame |
| 23 | 128 5201 | 4 | 4 | Hinge Pin |
| 24 | 128 2740 | 4 | 4 | Door Hinge |
| 25 | 121 8966 | 2 | 2 | Weather Stripping |
| 26 | 121 2887 | 1 | 1 | Door Handle |
| | 128 8251 | 4 | 4 | 8-18 x 1/2" Sheet Metal Screws |
| 27 | 128 3009 | 1 | 1 | Rear Door |
| 28 | 128 2646 | 1 | 1 | Fan Housing Mount - Left |
| 29 | 121 0414 | 3 | 3 | Latch and Handle |
| 30 | 121 2928 | 2 | 5 | Unit Floor Panel |
| 31 | 128 2645 | 1 | 1 | Fan Housing Mount - Right |
| 32 | 126 2833 | 1 | 1 | Front Floor Panel |
| 33 | 126 2000 | 1 | 1 | Floor Panel Support Angle |
| 34 | 124 2851 | 1 | 1 | Air Flow Director 40 1/2" (All Heat) |
| 35 | 126 2834 | 1 | 1 | Panel Below Fan Housing |
| 36 | 124 2849 | 1 | 1 | Air Flow Director LH 14 3/4" (37.5cm) Dry/Cool |
| 37 | 124 2850 | 1 | 1 | Air Flow Director RH 16 1/2" (42cm) Dry/Cool |
| 38 | 129 5709 | 1 | 1 | Port View Lens (Rear Door) |
| | 000 8212 | 4 | 4 | 1/4"-20 x 1/2" (6.35 x 12.7mm) Truss Head Bolt |
| | 000 8167 | 2 | 2 | 1/4"-20 Flanged Whiz Locknut |

NOTE: This decal is imprinted "Model 975." Order one of Ref. 19 to be placed over "Model 975."

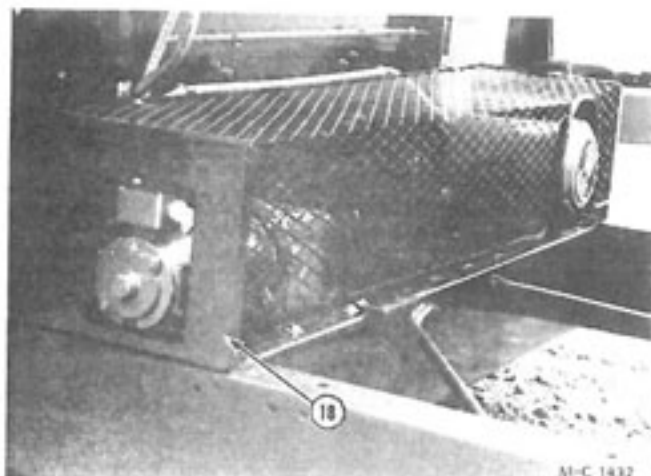
SCR DRIVE MOTOR AND GEAR BOX



| Ref. | Part No. | Qty. | Description | Ref. | Part No. | Qty. | Description |
|------|----------|------|--|------|----------|------|---|
| 1 | 124 6837 | 1 | DC Motor - 1/3 HP | 9 | 127 6860 | - | 230/460V 1.5HP 3Ø Motor |
| | 122 8613 | - | DC Motor Brush | | 121 6861 | - | 230/460V 2HP 3Ø Motor |
| 2 | 124 6624 | 1 | SCR Gear Box (Incl. 3/16" x 1" Key - 001 5110) | | 001 5112 | 1 | Key - 3/16" x 1 1/2" (For 1 1/2 HP motor) |
| | 128 8947 | 1 | Pint of Mobil SHC 634 Oil | | 001 5114 | 1 | Key - 3/16" x 1 1/2" (For 2 HP motor) |
| | 001 8209 | 4 | 3/8-16 x 1 1/4" Hex Washer Head Bolt | | 128 1810 | 1 | Motor to Cabinet Wire Ass'y |
| | 000 8174 | 4 | 3/8" Flatwasher | | 000 8110 | 1 | 5/16-18 x 1 1/2" Capscrew |
| | 000 8168 | 4 | 3/8" Flanged Locknut | | 000 8108 | 3 | 5/16-18 x 1" Capscrew |
| 3 | 128 6425 | 1 | SCR Gear Box Sprocket RC40-9T-, 3/4" I.D. | | 000 8173 | 4 | 5/16" Flatwasher |
| 4 | 128 6426 | 2 | Metering Roll Sprocket RC40-40T-1 1/4" I.D. | | 000 8169 | 4 | 5/16-18 Flanged Locknut |
| | 000 8298 | 2 | Woodruff Key - 1/4" x 3/4" | 10 | 124 4214 | 1 | Unload Auger Motor Mt. |
| 5 | 021 6201 | 1 | Pulley-2B x 13.6 SK | | 001 8209 | 2 | 3/8-16x1" Hex Washer Hd. Bolt |
| | 001 5130 | 1 | Key - 3/8" x 1" | | 001 8210 | 3 | 3/8-16x3/4" Hex Washer Hd. Bolt |
| 6 | 021 6100 | 1 | B-65 Belts (Matched Set of 2) | | 001 8132 | 1 | 3/8-16 x 4" "J" Bolt |
| 7 | 128 6315 | 1 | Chain - RC40 x 130 Pitch | | 000 8174 | 2 | 3/8" Flatwasher |
| | 002 6309 | - | Connecting Link | | 000 8168 | 6 | 3/8-16 Flanged Locknut |
| 8 | 121 6210 | 1 | Pulley - 2B - 3-3/16" OD - 3/8" Bore | 11 | 121 6022 | 2 | 1 1/4" Outboard Brg. |
| | 121 6203 | 1 | Pulley - 2B - 3-3/16" OD - 7/8" Bore | | 001 8209 | 4 | 3/8-16x1" Hex Washer Hd. Bolt |
| | | | | | 000 8174 | 4 | 3/8" Flatwasher |
| | | | | | 000 8168 | 4 | 3/8-16 Flanged Locknut |
| | | | | 12 | 128 0257 | 1 | Gear Mt. Motor Weld. |
| | | | | | 001 8210 | 4 | 3/8-16x3/4" Hex Washer Hd. Bolt |
| | | | | | 000 8174 | 4 | 3/8" Flatwasher |
| | | | | | 000 8168 | 4 | 3/8-16 Flanged Locknut |

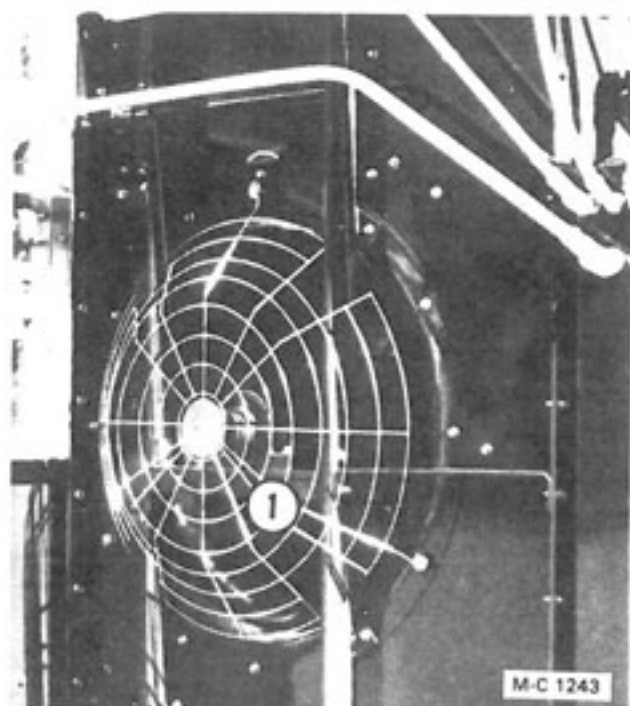
SCR DRIVE MOTOR AND GEAR BOX

| Ref. | Part No. | Qty. | Description |
|------|----------|------|---|
| 13 | 001 6202 | 1 | SK Bushing - 1-7/16" Bore (Incl. capscrews) |
| 14 | 128 0191 | 1 | Outboard Bearing Mount |
| 15 | 124 4500 | 1 | Gear Box Mount |
| | 000 8119 | 4 | 3/8-16 x 3/4" Capscrew |
| | 000 8174 | 4 | 3/8" Flatwasher |
| | 000 8168 | 4 | 3/8-16 Flanged Locknut |
| 16 | 128 1999 | 1 | SCR Motor to Cabinet Flexible Conduit (40") |
| 17 | 121 6906 | 2 | Pipe Clamp |
| 18 | 128 0268 | 1 | Drive Guard |
| | 128 8951 | 2 | Rubber Strap w/Hook |
| | 001 3302 | 2 | Angle Clip |
| | 000 8121 | 4 | 3/8-16 x 1" Capscrew |
| | 000 8174 | 6 | 3/8" Flatwasher |
| | 001 8149 | 4 | 3/8-16 Two-Way Locknut |
| | 000 8212 | 2 | 1/4-20 x 1/2" Truss Hd. Screw |
| | 000 8167 | 2 | 1/4-20 Flanged Locknut |

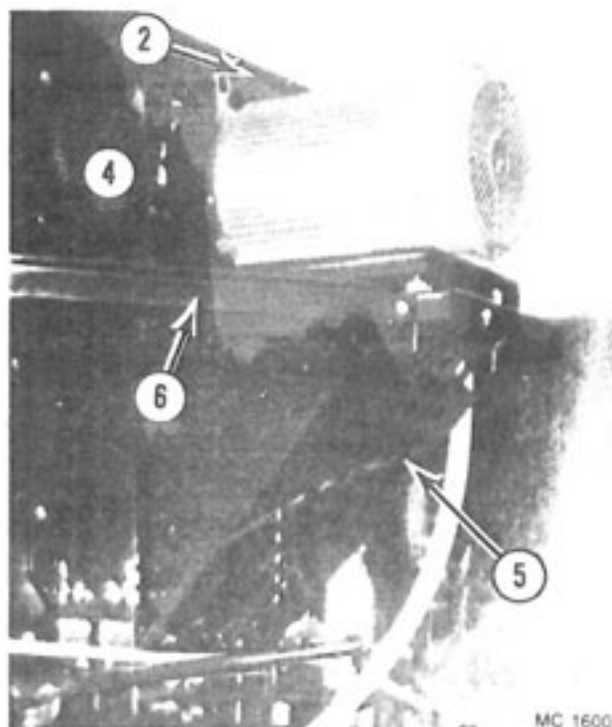


| Ref. | Part No. | Qty. | Description |
|-------------------|----------|------|-----------------------------|
| Not Shown: | | | |
| | 000 8301 | 2 | Safety Shield Warning Decal |
| | 120 6914 | 2 | Chase Nipple - 1/2" |

Fan Guards

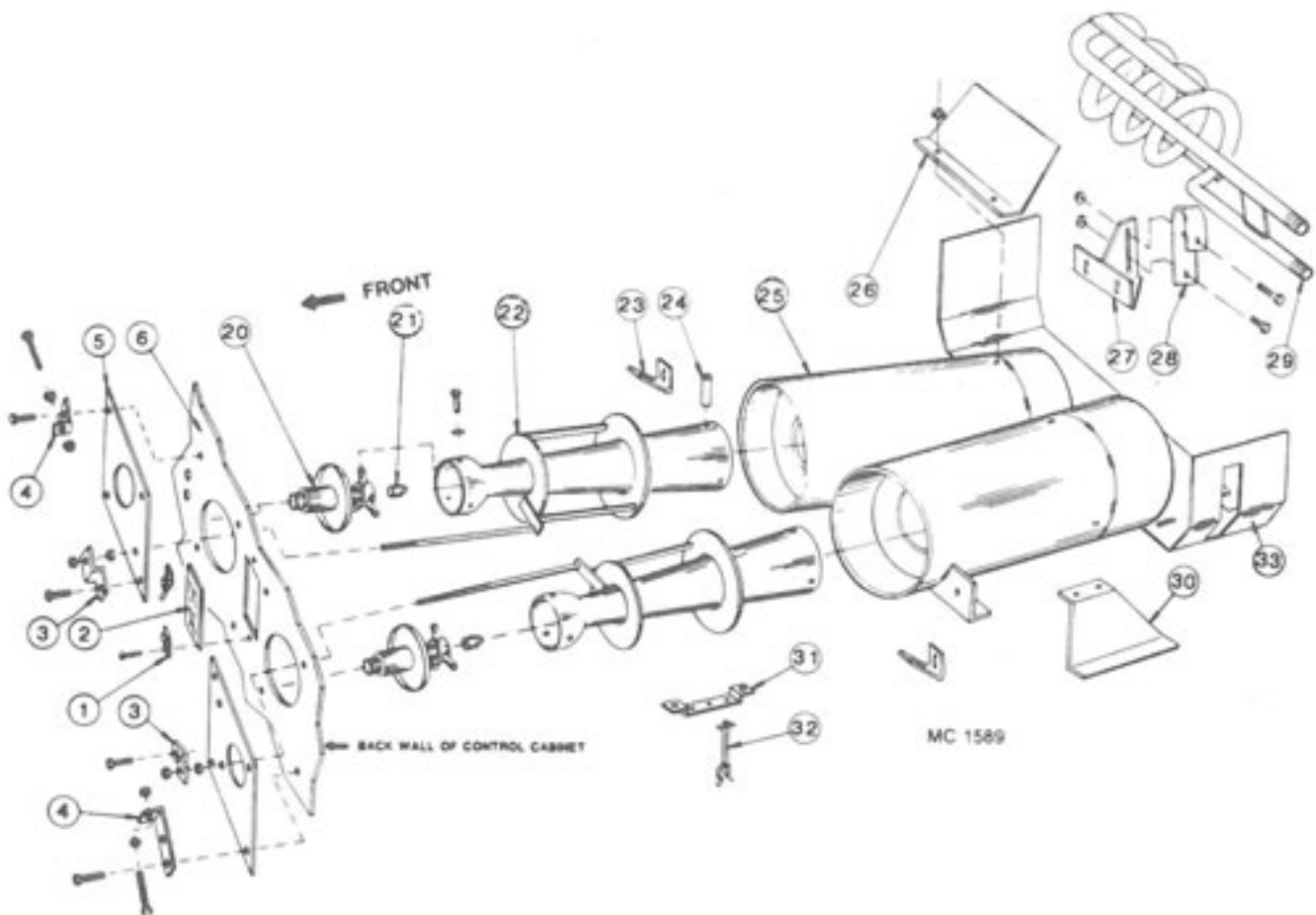
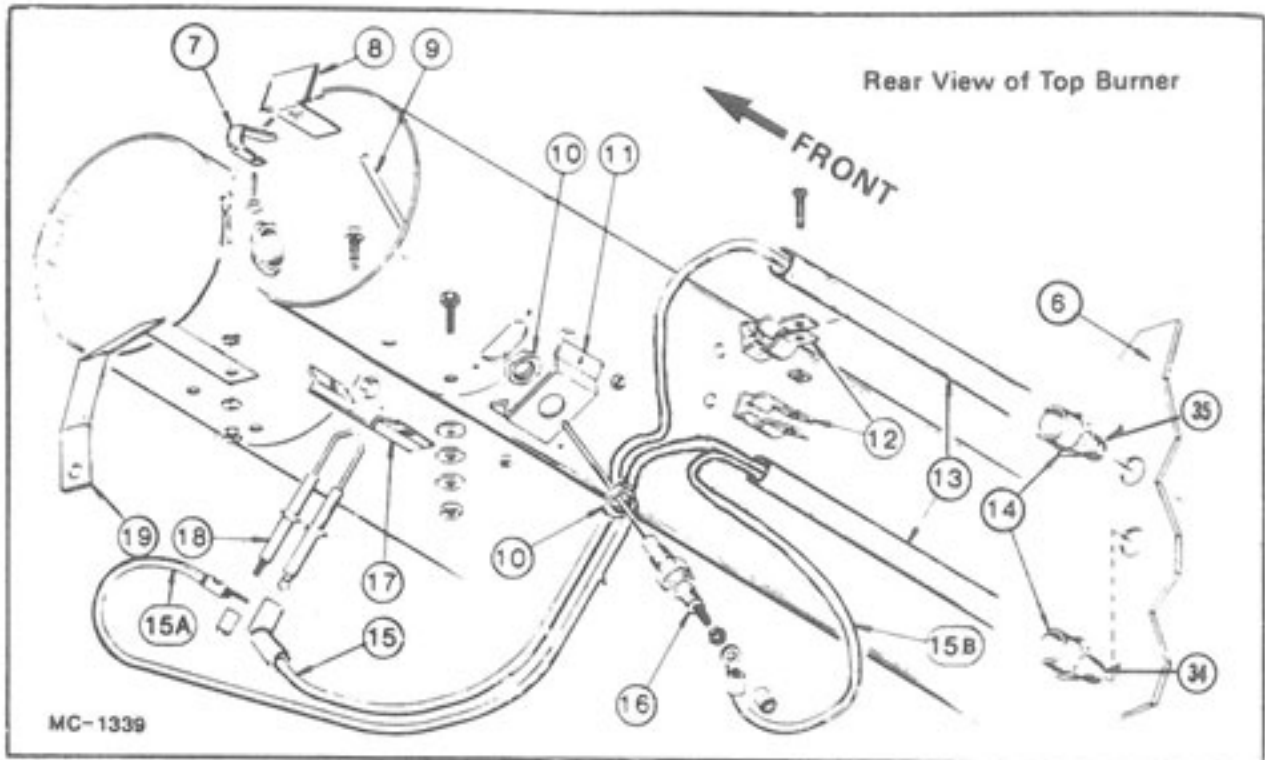


| Ref. | Part No. | Qty. | Description |
|------|----------|------|------------------------------|
| 1 | 128 8964 | 1 | Full Wire Fan Guard |
| 2 | 121 8301 | 1 | Counterclockwise Arrow Decal |



| Ref. | Part No. | Qty. | Description |
|------|----------|------|----------------------------|
| 4 | 124 4774 | 1 | Center Fan/Belt Guard |
| 5 | 124 4773 | 1 | Below Motor Fan/Belt Guard |
| 6 | 124 4213 | 1 | Motor Mount Brace |

Venturi Burner



VENTURI BURNER

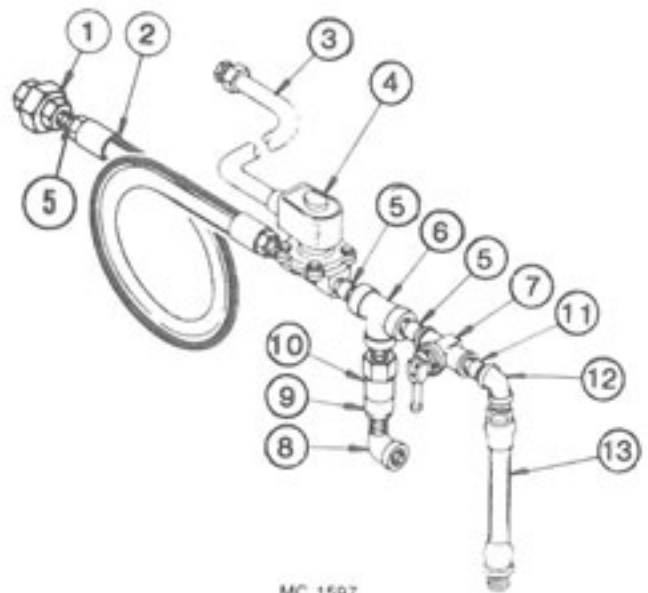
NOTE: Quantities shown are for one burner assembly.

| Ref. | Part No. | Qty. | Description |
|------|----------|------|---|
| 1 | 128 8969 | 2 | Burner Window Holder Clip |
| 2 | 128 8968 | 1 | Burner Window |
| 3 | 128 4515 | 2 | Air Adjuster Bracket |
| 4 | 128 3371 | 2 | Air Adjuster Clamp Bracket Short (2-15/16") |
| | 128 2008 | 2 | Air Adjuster Clamp Bracket Long (3-9/16") |
| 5 | 128 4488 | 2 | Hand Hole Cover Plate |
| 6 | ---- | - | Back Wall of Control Cabinet |
| 7 | 127 5201 | 1 | Eddy Mounting Strip |
| 8 | 127 5200 | 1 | Natural Gas Eddy |
| 9 | 128 0197 | 1 | Flame Ground Rod |
| 10 | 121 6915 | 2 | Locknut - 1/2" |
| 11 | 128 3007 | 1 | Flame Sensing Probe Bracket |
| 12 | 121 6906 | 2 | Pipe Clamp |
| 13 | 128 5742 | 2 | Igniter Line Support Tube |
| 14 | 127 8063 | 2 | PVC Female Adapter - 1/2" |
| 15 | 122 9003 | 1 | Ignition Wire with 90° Boot |
| 15A | 124 | 1 | Low Voltage Wire Ass'y Red (Electrode) 18 ga. |
| 15B | 124 1079 | 1 | Low Voltage Wire Ass'y Black (Sensing Probe) 18 ga. |
| 16 | 124 6872 | 1 | Flame Sensing Probe |
| 17 | 128 2962 | 1 | Electrode Mounting Bracket |
| 18 | 128 6995 | 1 | Style 2 Electrode |
| 19 | 121 3007 | 1 | Ground Strap |
| 20 | 128 0108 | 2 | Inlet Throttle |
| 21 | 127 5700 | 2 | Burner Nozzle-Natural Gas - 3/8" (9.5mm) Orifice |
| | 128 5715 | 2 | Burner Nozzle-LP Gas - 1/4" (6.35mm) Orifice |
| 22 | 128 0112 | 2 | Venturi Burner |
| 23 | 128 4260 | 2 | Burner Mounting Strap |
| 24 | 128 5401 | 6 | Venturi Spacer |
| 25 | 128 0137 | 1 | Venturi Extension |
| 26 | ---- | - | Burner Deflector |
| | 128 5310 | 1 | 17 3/8" (For 10HP fan assembly) |
| | 128 5308 | 1 | 12 3/4" (For 20HP fan assembly) |
| 27 | 128 0141 | 1 | Vaporizer Coil Anchor (LP Gas) |
| 28 | 128 5306 | 1 | Vaporizer Coil Anchor Clip (LP Gas) |
| 29 | 128 0140 | 1 | Vaporizer Coil (LP Gas) |
| 30 | 128 4523 | 1 | Burner Front Support - Right |
| | 128 4524 | 1 | Burner Front Support - Left |
| 31 | 128 4941 | 1 | Wire Support Bracket |
| 32 | 128 6989 | 3 | Stand-Off Clip |
| 33 | 128 5313 | 1 | Burner Shroud |
| 34 | 121 6814 | 1 | Low Voltage Feed Through (2) Holes |
| 35 | 121 6815 | 1 | High Voltage Feed Through (1) Hole |

LP Gas Liquid Lines

Liquid Control Line

| Ref. | Part No. | Description |
|------|----------|--------------------------------|
| 1 | 121 8022 | ½" Extra Heavy Union |
| 2 | 128 8400 | ½" ID x 34" Hose w/Couplings |
| 3 | 128 1820 | ¾" Flexible Conduit |
| 4 | 125 7082 | ½" Solenoid Valve |
| 5 | 121 8094 | ½" x 1 ½" Extra Heavy Nipple |
| 6 | 120 8035 | ½" Extra Heavy Tee |
| 7 | 121 7015 | Hand Valve - ½" |
| 8 | 121 8048 | ½" - 90° Standard Street Elbow |
| 9 | 121 7014 | Relief Valve Adapter |
| 10 | 121 7013 | Relief Valve |
| 11 | 128 8048 | ½" x 2 ½" Extra Heavy Nipple |
| 12 | 121 8036 | ½" - 90° Extra Heavy Elbow |
| 13 | 121 7005 | Intake Hose Liquid Propane |

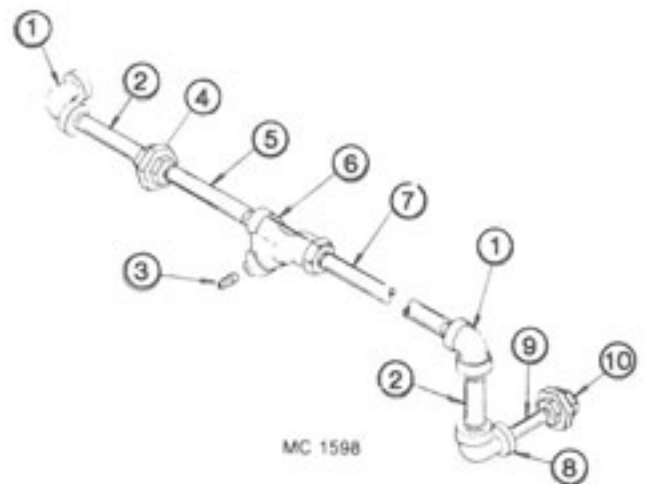


Solenoid Valve Repair Kit

The repair kit and coil for the ½" solenoid valve (ref. 4) is shown on page 19.

Vaporizer to Manifold Pipe

| Ref. | Part No. | Description |
|------|----------|----------------------------------|
| 1 | 121 8027 | ¾" - 90° Extra Heavy Elbow |
| 2 | 121 8006 | ¾" x 2" Extra Heavy Nipple |
| 3 | 001 8001 | ¾" Pipe Plug |
| 4 | 121 8072 | ¾" Extra Heavy Union |
| 5 | 125 8058 | ¾" x 2 ½" Extra Heavy Nipple |
| 6 | 121 8060 | ¾" Strainer |
| 7 | 128 5426 | ¾" x 30 ½" Extra Heavy Nipple |
| 8 | 121 8032 | ¾" to ½" - 90° Extra Heavy Elbow |
| 9 | 121 8094 | ½" x 1 ½" Extra Heavy Nipple |
| 10 | 121 8022 | ½" Extra Heavy Union |



LP and Natural Gas Manifolds

REPAIR KITS AND PARTS FOR MODULATING VALVES, SOLENOID VALVES AND LP GAS PRESSURE REGULATORS

For Modulating Valves 123 7002 & 123 7024
122 9993 Seat Kit (Incl. stem, disc holder & diaphragm)
122 7006 Diaphragm

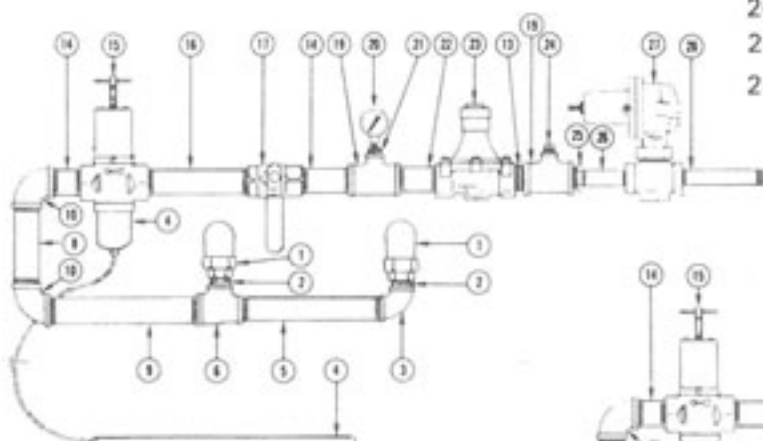
For 1 1/4" Solenoid Valve 128 7001
122 7034 Repair Kit (See note)
--- 4607 Coil

For 1/2" Solenoid Valve 125 7082
122 7039 Repair Kit (See note)
122 7001 Coil

NOTE: Kit includes all internal parts that would require replacement in normal service and installation instructions.

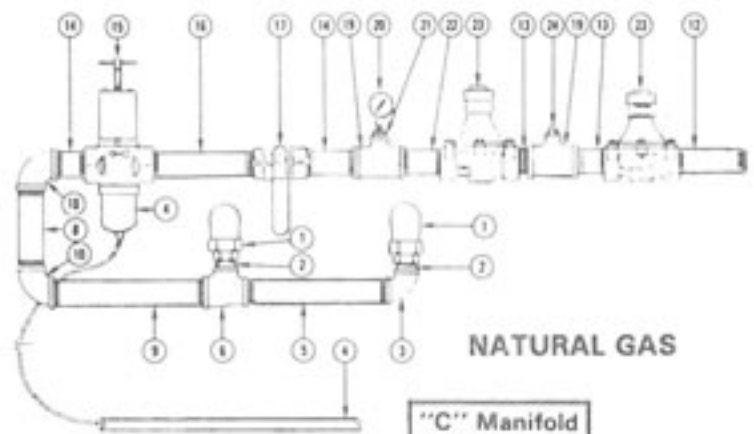
For LP Gas Pressure Regulator 128 7005
122 7043 - Diaphragm (Nitrile)
122 7044 - Disc Assembly
122 7045 - Control Spring (Yellow)
122 7046 - Stabilizer
122 7047 - Diaphragm Case O Ring

| Ref. | Part No. | Description |
|------|----------|--|
| 1 | 128 8029 | 1" Std. Union Elbow-90° |
| 2 | 128 8013 | 1" Std. Close Nipple |
| 3 | 128 8016 | 1" Std. Elbow - 90° |
| 4 | 122 7023 | Power Element 90°-210°F (15' Capillary) Code "B" Optional |
| | 122 7036 | Power Element 140°-250°F (15' Capillary) Code "D" Standard |
| 5 | 128 8058 | 1" x 10 1/2" Std. Nipple |
| 6 | 128 8007 | 1 1/4" x 1" x 1" Std. Tee |
| 7 | 127 8016 | 1 1/4" x 5 1/2" Std. Nipple |
| 8 | 123 8046 | 1 1/4" x 7 1/2" Std. Nipple |
| 9 | 128 8065 | 1 1/4" x 11" Std. Nipple |
| 10 | 123 8051 | 1 1/4" Std. Elbow - 90° |
| 11 | 127 8021 | 1 1/4" x 9 1/2" Std. Nipple |
| 12 | 123 8073 | 1 1/4" x 6 1/2" Std. Nipple |
| 13 | 123 8069 | 1 1/4" Std. Close Nipple |
| 14 | 123 8045 | 1 1/4" x 2 1/2" Std. Nipple |
| 15 | 123 7024 | 1 1/4" Modulating Valve w/ 140°- 250°F Power Element |
| 16 | 129 8033 | 1 1/4" x 8 1/2" Std. Nipple |
| 17 | 123 7003 | 1 1/4" Main Hand Valve |
| 18 | 128 8024 | 1 1/4" x 5 Std. Nipple |
| 19 | 127 8131 | 1 1/4" x 1 1/4" x 3/8" Std. Tee |
| 20 | 120 7002 | Pressure Gauge |
| 21 | 127 8132 | 3/8" to 1/4" Reducing Bushing |
| 22 | 128 8003 | 1 1/4" x 3 1/2" Std. Nipple |
| 23 | 128 7001 | 1 1/4" Solenoid Valve |
| 24 | 001 8001 | 3/8" Pipe Plug |
| 25 | 123 8078 | 1 1/4" x 3/4" Std. Reducing Bushing |
| 26 | 121 8069 | 3/4" x 3" Std. Nipple |
| 27 | 128 7005 | LP Gas Pressure Reg. |
| 28 | 121 8091 | 3/4" X 7" Extra Hvy. Duty Nipple |



"C" Manifold

LIQUID PROPANE



"C" Manifold

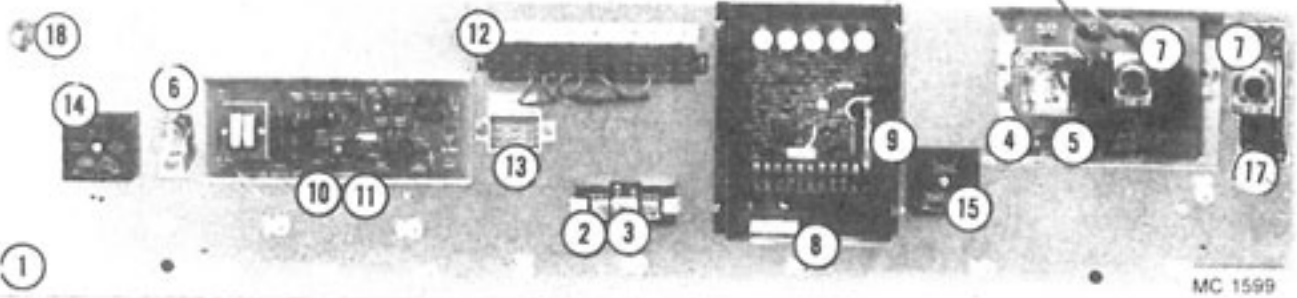
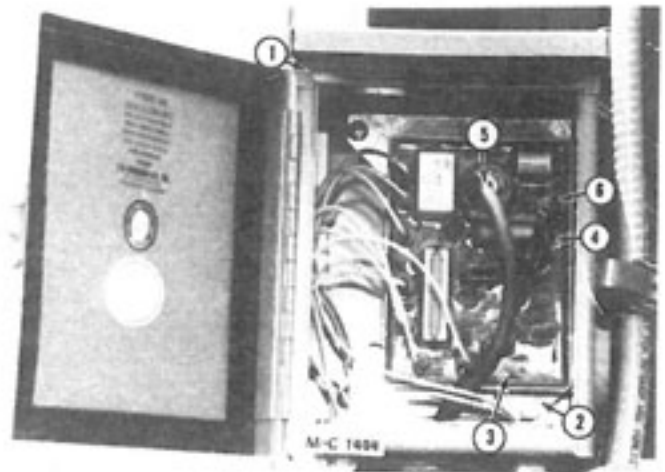
NATURAL GAS

IGNITION BOARD AND BOX

Ref. Part No. Qty. Description

| | | | |
|---|----------|---|--------------------------------|
| 1 | 128 5995 | 1 | Ignition Box |
| 2 | 128 2938 | 1 | Ignition Board Mt. Plate |
| 3 | 121 6925 | 1 | 115V Ignition Board |
| 4 | 124 1079 | 1 | Low Volt Wire Kit 18 ga. Black |
| 5 | 122 9003 | 1 | High Voltage Wire Kit |
| 6 | | 1 | Low Volt Wire Kit 18 ga. Red |

Electrical Components In 115V Control Cabinet

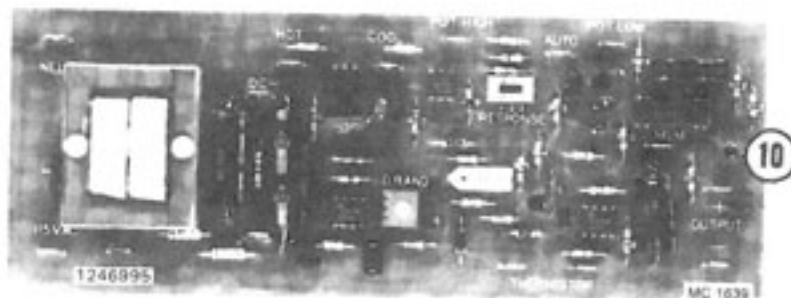
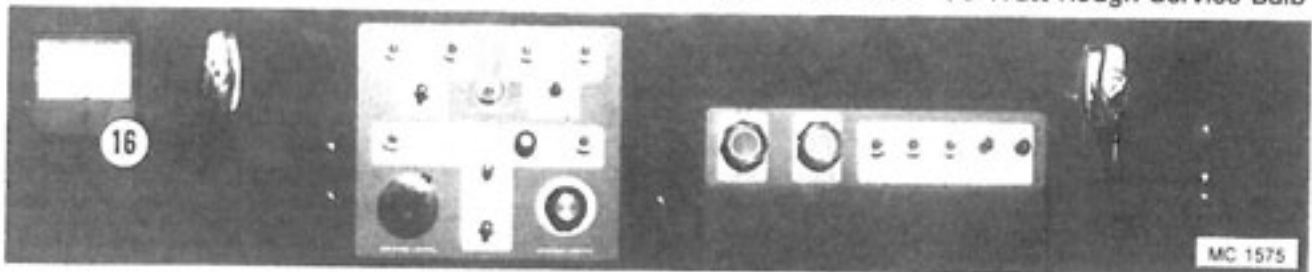


Ref. Part No. Description

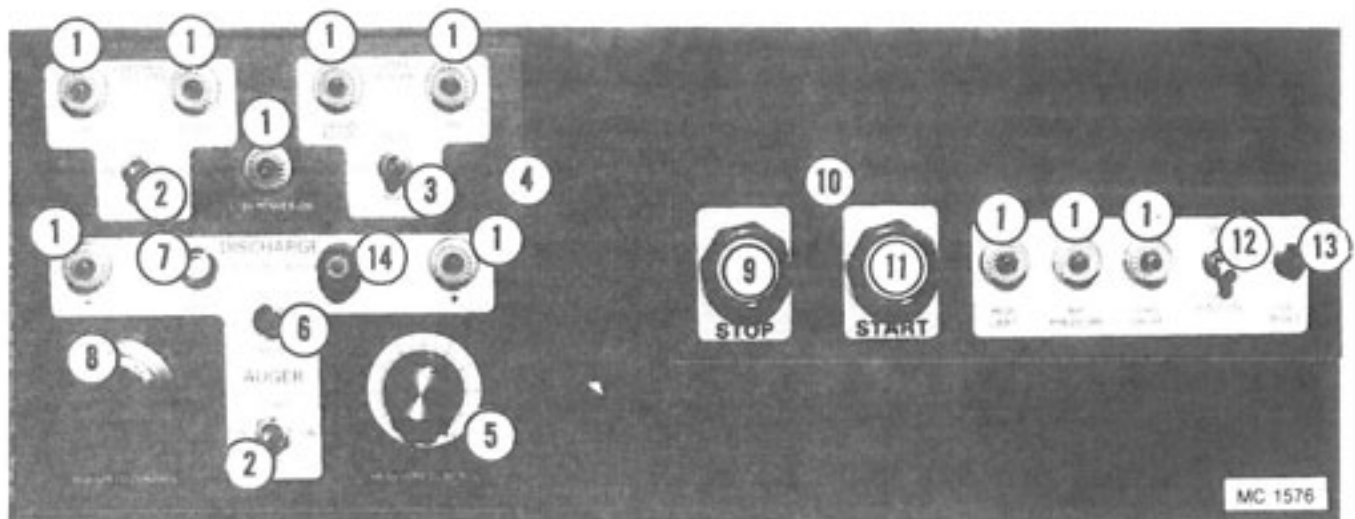
| | | |
|---|----------|------------------------------|
| 1 | 124 4806 | Component Mounting Board |
| 2 | 128 6851 | Fuse Holder |
| 3 | 128 6967 | 10 Amp Fuse (NON-10) |
| 4 | 124 6972 | Relay and Timer Socket Board |
| 5 | 021 6809 | Relay |
| 6 | 125 6918 | Grounding Lug |
| 7 | 124 6978 | 60 Minute Adjustable Timer |
| 8 | 124 6874 | SCR Board (Dart) |
| 9 | 121 6805 | 10 Amp. - GLH Fuse |

Ref. Part No. Description

| | | |
|----|----------|--|
| 10 | 124 6995 | Moisture Control Board |
| 11 | 128 5916 | Snap Track 8 1/2" |
| 12 | 124 6928 | Terminal Block 12-Position |
| 13 | 124 6929 | Terminal Block 3-Position |
| 14 | 124 6996 | 2 to 180 Second Adjustable Level Auger Timer |
| 15 | 124 6831 | 10 Second Ignition Timer |
| 16 | 124 6981 | Discharge Meter |
| 17 | 124 6987 | Cold Grain Timer Base |
| 18 | 124 6842 | 50 Watt Rough Service Bulb |

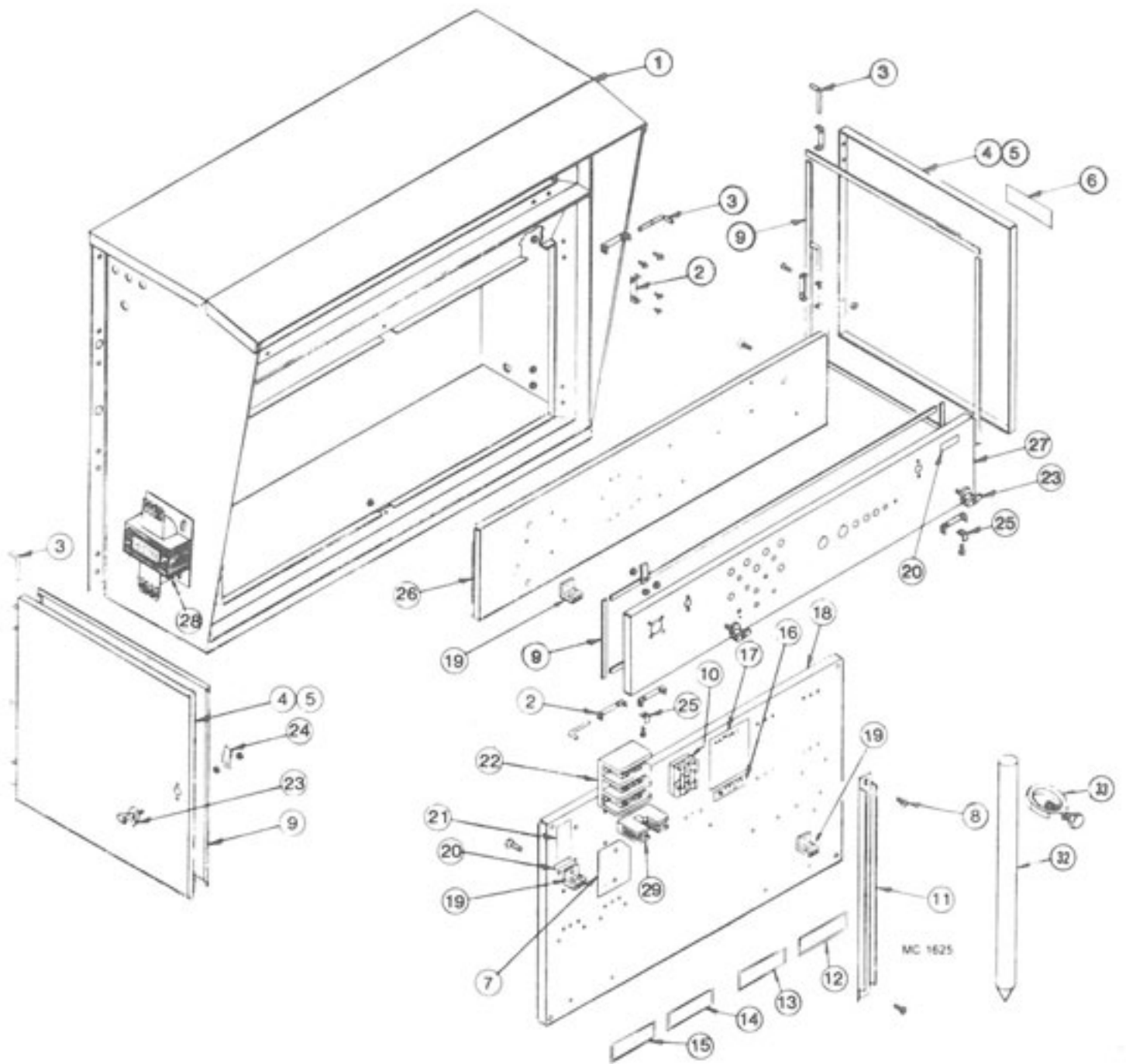


CONTROL PANEL LIGHTS, SWITCHES AND CONTROLS



| Ref. | Part No. | Description |
|------|----------|---|
| 1 | 121 6808 | 125V Indicator Lamp Assembly (Inc. lamp & lens) |
| | 122 6810 | 125V Indicator Lamp |
| | 122 6800 | Indicator Lamp Lens (Clear) |
| 2 | 120 6827 | OFF-ON-ON Momentary Contact Toggle Switch |
| 3 | 121 6807 | ON-OFF-ON Toggle Switch (DPDT) (Level Auger) |
| 4 | 128 8365 | 115V Control Bezel |
| 5 | 124 6939 | Moisture Control Potentiometer & Wires - 27" (69cm) |
| | 124 6941 | Knob |
| 6 | 124 6895 | ON-OFF-ON Toggle Switch (3PDT) (Metering Rolls) |
| 7 | 124 6848 | 8 Amp Circuit Breaker (SCR Drive) |
| 8 | 124 1089 | SCR Drive Potentiometer (10 turn w/wires) - 36" (91.5cm) |
| | 124 6892 | Multi-Dial |
| 9 | 128 6845 | Stop Button - Red |
| 10 | 128 8358 | Fan Control Bezel |
| 11 | 128 6844 | Start Button - Green |
| 12 | 121 6815 | ON-OFF Toggle Switch (SPST) |
| 13 | 122 6814 | Ignition Reset (0.1 Amp) |
| 14 | 124 6938 | Fuse Holder |
| | 124 6937 | 1 Amp Fuse Slo-Blow |

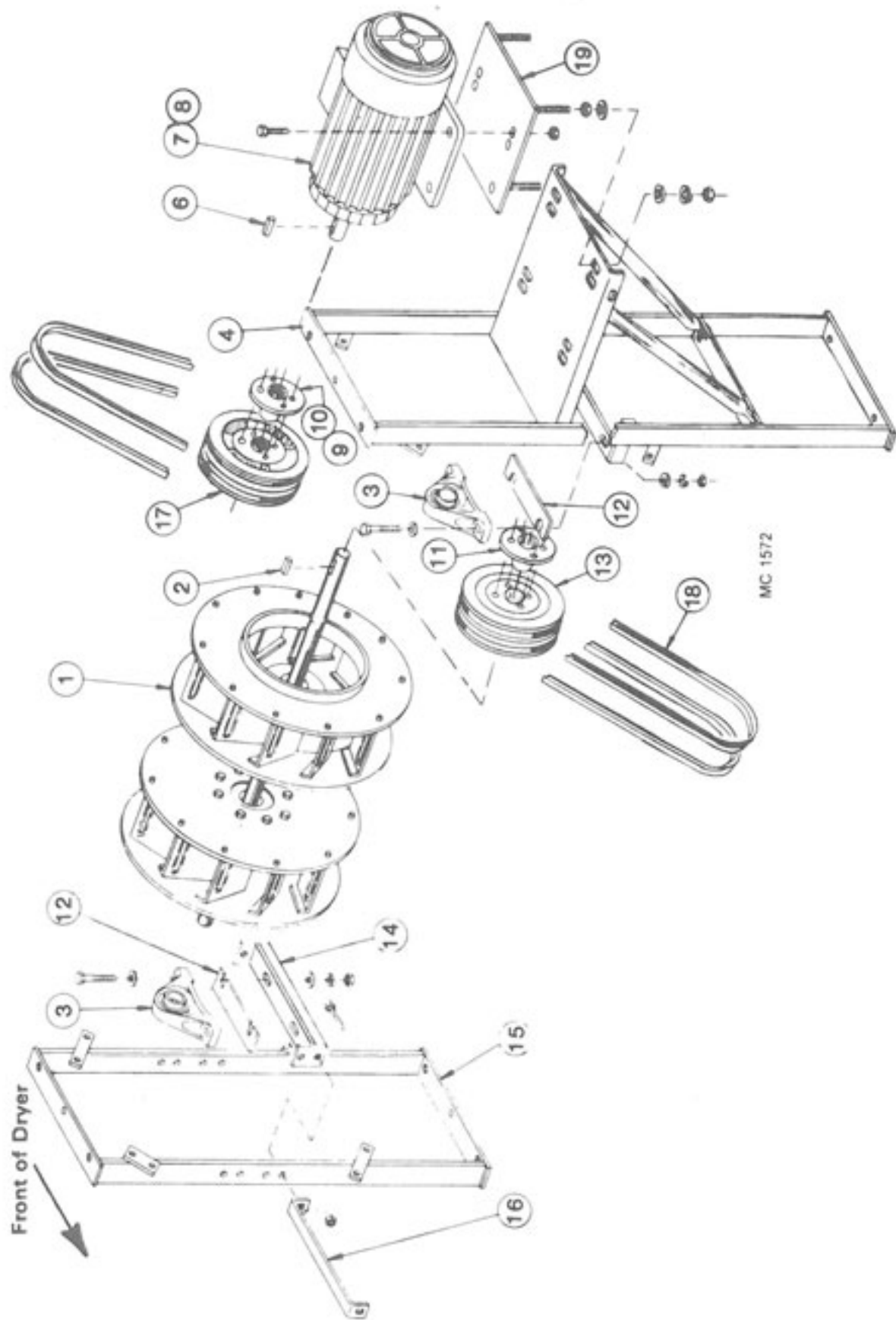
Control Cabinet



Control Cabinet

| Ref. | Part No. | Qty. | Description |
|------|----------|------|---|
| 1 | 128 0306 | 1 | Motor Control Cabinet Weld. |
| 2 | 128 2740 | 12 | Door Hinge |
| 3 | 128 5201 | 6 | Hinge Pin |
| 4 | 128 1329 | 2 | Door Ass'y - Left & Right (Incl. ref. 2, 5 & 9) |
| 5 | 128 4844 | 2 | Door - Left & Right |
| 6 | 121 8316 | 1 | Dryer Warning Decal |
| 7 | 128 5789 | 2 | Insulator Sheet (460V - 575V) |
| 8 | 000 8103 | 2 | 5/16-18 x 1/2" Truss Hd. Screw |
| | 000 8169 | 2 | 5/16-18 Flanged Locknut |
| 9 | 121 8966 | - | Weather Stripping 1/4" x 3/4" (Specify ft. required) |
| 10 | 121 6988 | 2 | Fuse Holder - 380, 415, 460 & 575V |
| | 124 6870 | 2 | FRS - 7 Amp Fuse (380V) |
| | 124 6829 | 2 | FRS - 4 Amp Fuse (415V) |
| 11 | 128 4843 | 1 | Door Jamb |
| 12 | 121 8325 | 1 | Upper Heat Fan Decal |
| 13 | 121 8313 | 1 | Heat Fan Decal |
| | 121 8312 | 1 | Cool Fan Decal |
| 14 | 128 8335 | 1 | Unload Auger Decal |
| 15 | 121 8351 | 1 | Level Auger Decal |
| 16 | 123 8339 | 1 | 208 Volts Decal |
| | 123 8336 | 1 | 230 Volts Decal |
| | 123 8337 | 1 | 460 Volts Decal |
| | 123 8338 | 1 | 575 Volts Decal |
| 17 | 121 8315 | 1 | Notice, Warranty Decal |
| 18 | 124 4448 | 1 | Component Mounting Panel |
| 19 | 125 6918 | 2 | Grounding Lug |
| 20 | 128 8349 | 2 | Ground Decal |
| 21 | 128 8318 | 1 | Splitter Block Voltage Decal |
| 22 | 128 6957 | 1 | Splitter Block - 1 & 3 Phase |
| 23 | 124 1021 | 4 | Door "T" Handle Ass'y (Incl. ref. 24 cam, keys and mtg. hdwe.) Lever type handle no longer available. |
| | 128 8946 | 4 | Door "T" Handle w/Keys (Less ref. 24 cam) |
| | 122 8900 | 4 | Door "T" Handle Key |
| 24 | 128 3425 | 4 | Door Latch Cam |
| 25 | 128 2741 | 2 | Stop Bracket |
| 26 | 124 4806 | 1 | Component Mounting Board |
| 27 | 124 4842 | 1 | Control Door 1-Burner |
| | 124 1021 | 2 | Door "T" Handle Ass'y |
| 28 | 127 6829 | 1 | Transformer (750VA) 460/575V |
| | 123 6902 | 1 | Transformer (1000VA) 380/415V |
| 29 | 127 6823 | 1 | Neutral Lug |
| 30 | 124 2855 | 1 | Hour Meter Bracket (not shown) |
| 31 | 444 645 | 1 | Hour Meter (not shown) |
| 32 | 124 6980 | 1 | Grounding Rod 9/16" dia. x 8 ft. (14.3mm x 2.4m.) |
| 33 | 124 6979 | 1 | Grounding Rod Ring |

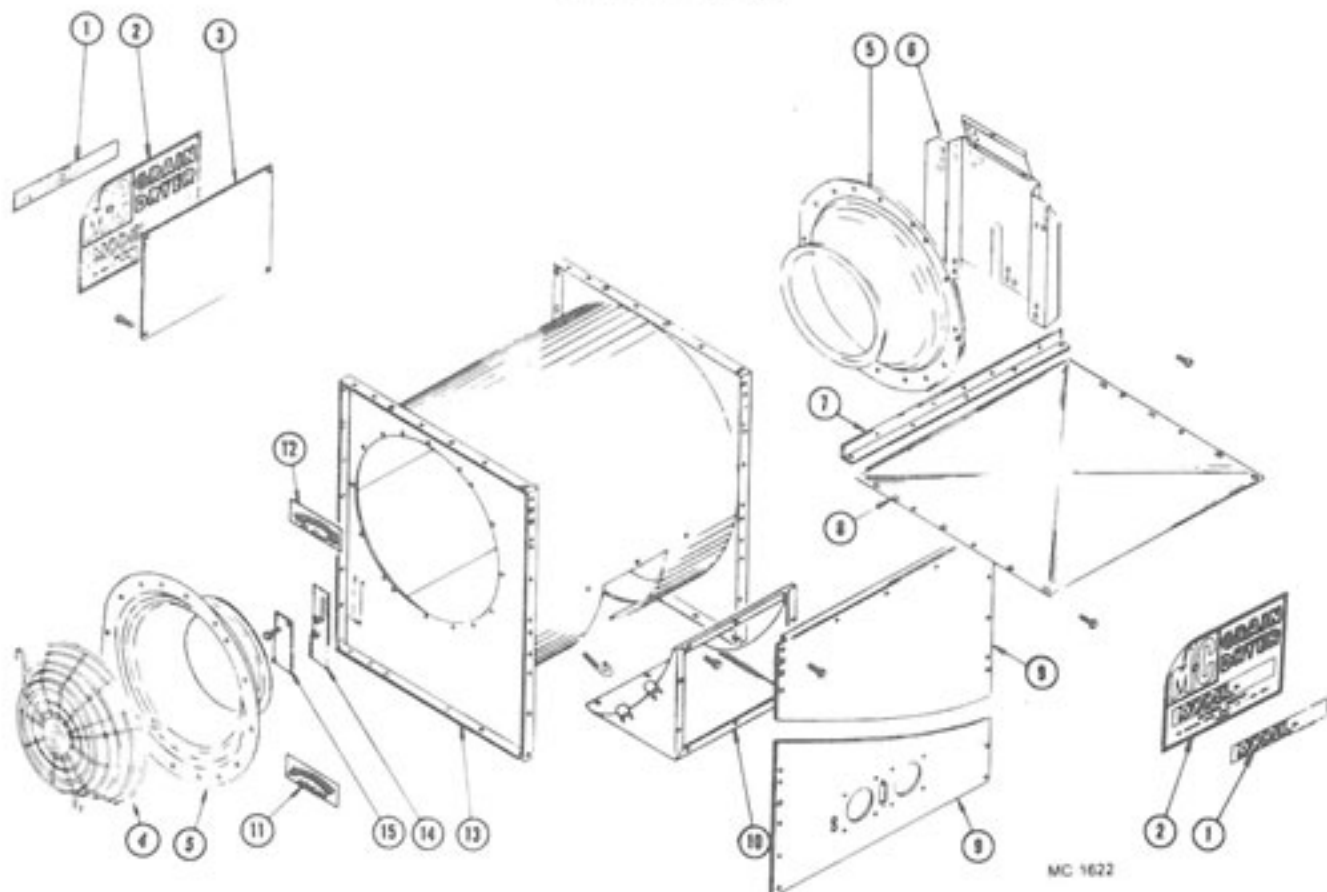
Belt Drive Fans (Model 370 & 570C)



Belt Drive Fans
(Model 370 & 570C)

| Ref. | Part No. | Qty. | Description | Ref. | Part No. | Qty. | Description |
|------|----------|------|--|------|----------|------|--|
| 1 | ---- | - | Centrifugal Fan | 15 | 128 0091 | 1 | Fan Bearing Support |
| | 124 1207 | 1 | 10HP BEM 50Hz Upper Fan | | 000 8121 | 8 | 3/8-16 x 1" Hex Bolt (4.5 x 25.4mm) |
| | 124 1206 | 1 | 20HP BEM 50Hz Upper Fan | | 000 8168 | 8 | 3/8-16 Flanged Locknut |
| 2 | 001 5150 | 1 | Key - 1/2" x 3/8" x 2" (12.7 x 9.5 x 50.8mm) | | 000 8135 | 4 | 1/2-13 x 1" Hex Bolt Grade 5 |
| 3 | 128 6022 | 2 | Pillow Block Brg. 2-3/16" (55.56mm) I.D. | | 000 8170 | 4 | 1/2-13 Flanged Locknut |
| 4 | 128 0335 | 1 | Motor Support Belt Drive | 16 | 128 3452 | 1 | Bearing Mount Stiffener |
| 6 | 001 5124 | 1 | Key - 5/16" x 2 3/8" 10HP (7.9 x 60.3mm) | | 001 8209 | 1 | 3/8-16 x 1" Hex Washer Hd. Bolt |
| | 001 5139 | 1 | Key - 3/8" x 3" 20HP (9.5 x 76.2mm) | | 000 8168 | 1 | 3/8-16 Flanged Locknut |
| 7 | 124 6963 | 1 | 10HP Motor (Uni-Mount) Plus | | 000 8139 | 1 | 1/2-13 x 1 3/4" Hex Bolt (12.7 x 44.5mm) |
| 8 | 124 6946 | 1 | 20HP Motor (Uni-Mount) Plus | | 000 8170 | 1 | 1/2-13 Flanged Locknut |
| 9 | 121 6239 | 1 | 1 3/8" SK Bushing w/35CW 10HP (34.9mm) | 17 | 127 6207 | 1 | 2/5V/10.3 SK Sheave (Motor) |
| 10 | 121 6229 | 1 | 1 3/8" SK Bushing w/35CW 20HP (41.3mm) | 18 | 128 6602 | 1 | BX50 Belt (Set of 2) |
| 11 | 128 6228 | 1 | 2-3/16" SK DSG Bushing w/Std. Kwy. | 19 | 128 0167 | 1 | Motor Mount 10HP |
| 12 | 128 2849 | AR | Bearing Shim 16 Gauge | | 121 0343 | 1 | Motor Mount 20HP |
| | 128 2649 | AR | Bearing Shim 11 Gauge | | 124 4213 | 1 | Motor Mount Brace |
| 13 | 127 6206 | 1 | 2/5V/8.5 SK Sheave (Fan) | 20 | 001 8209 | 2 | 3/8-16 x 1" Hex Bolt (9.5 x 25.4mm) |
| 14 | 128 0098 | 1 | Bearing Support | | 000 8168 | 2 | 3/8-16 Flanged Locknut |
| | 000 8138 | 4 | 1/2-13 x 1 1/2" Hex Bolt (12.7 x 38mm) | | | | |
| | 000 8170 | 4 | 1/2-13 Flanged Locknut | | | | |

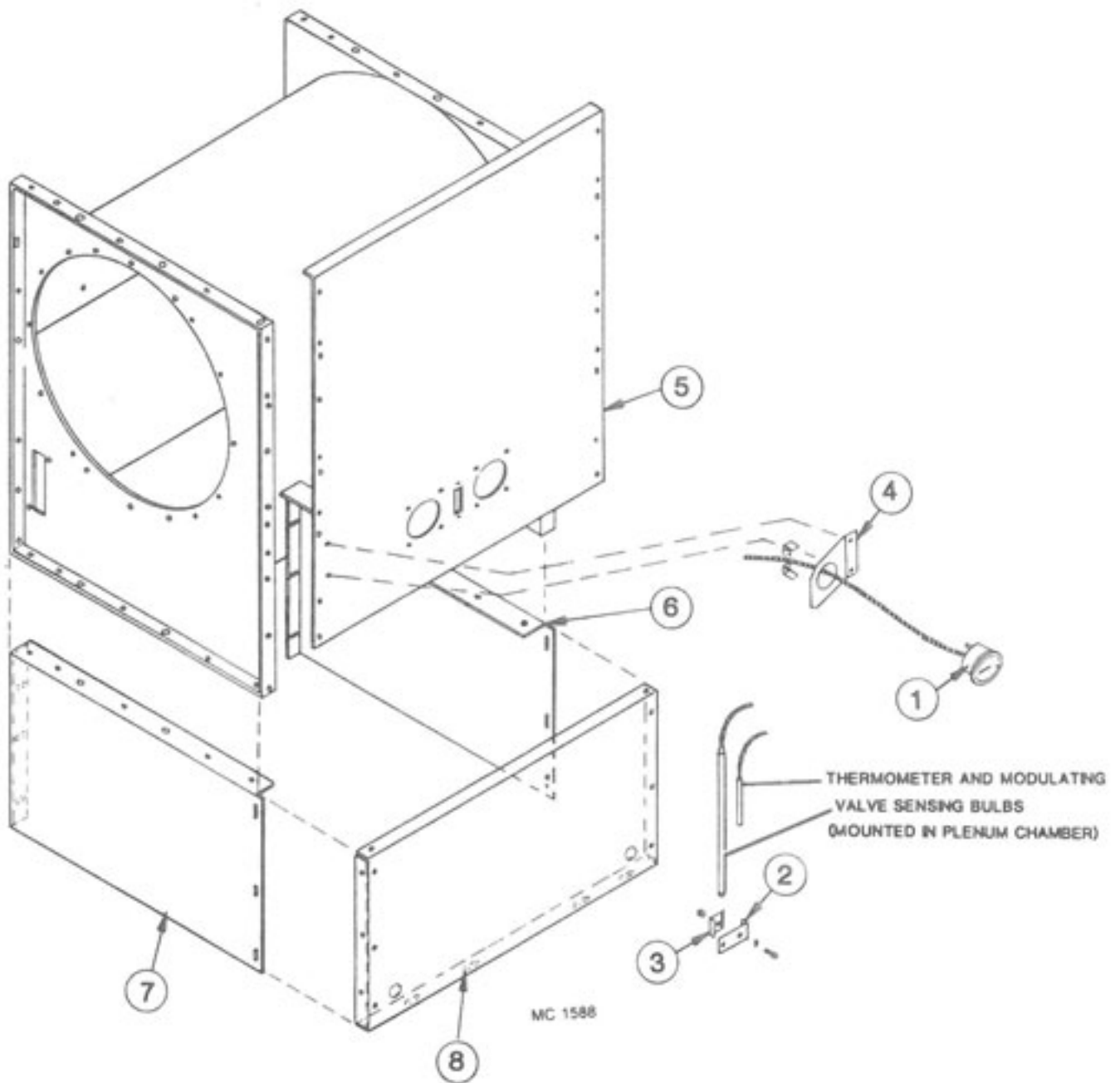
Fan Housing



| Ref. | Part No. | Qty. | Description | Ref. | Part No. | Qty. | Description |
|------|----------|------|---|------|----------|------|------------------------------------|
| 1 | ----- | - | Dryer Model Decal (NOTE 1) | 6 | 124 4774 | 1 | Center Fan/Belt Guard |
| | 128 8373 | - | 370 | 7 | 128 2757 | 1 | Fan Housing Support |
| | 128 8375 | - | 570 | 8 | 124 4834 | 1 | Fan Housing Top Cover |
| 2 | 128 8331 | 2 | Large Decal - Model 975 (See Note 1) | 9 | 128 0302 | 1 | Front Panel |
| 3 | 128 2999 | 1 | Decal Mount Plate (at rear of dryer) | 10 | 128 0142 | 1 | Burner Transition |
| 4 | 128 8964 | 1 | Full Fan Guard Wire | | 120 8130 | 4 | 5/16-16 x 2" "J" Bolt |
| 5 | 128 5724 | 2 | Air Intake Spinning | | 001 8210 | 3 | 5/16-16 x 3/4" Hex Bolt |
| | 001 8202 | 9 | 5/16-18 x 3/4" Hex Washer Head Bolt | | 000 8168 | 7 | 5/16-16 Flanged Locknut |
| | 000 8109 | 9 | 5/16-18 x 1 1/4" Capscrew | 11 | 121 8301 | 1 | Counterclockwise Arrow Decal |
| | 000 8173 | 9 | 5/16" Flatwasher | 12 | 128 8322 | 1 | Clockwise Arrow Decal |
| | 000 8169 | 18 | 5/16-18 Flanged Locknut | 13 | 128 0127 | 1 | Centrifugal Fan Housing |
| | | | | 14 | 128 0086 | 1 | Vaporizer Mount Plate (LP) |
| | | | | 15 | 128 4940 | 1 | Vaporizer Hole Cover (Nat. Gas) |

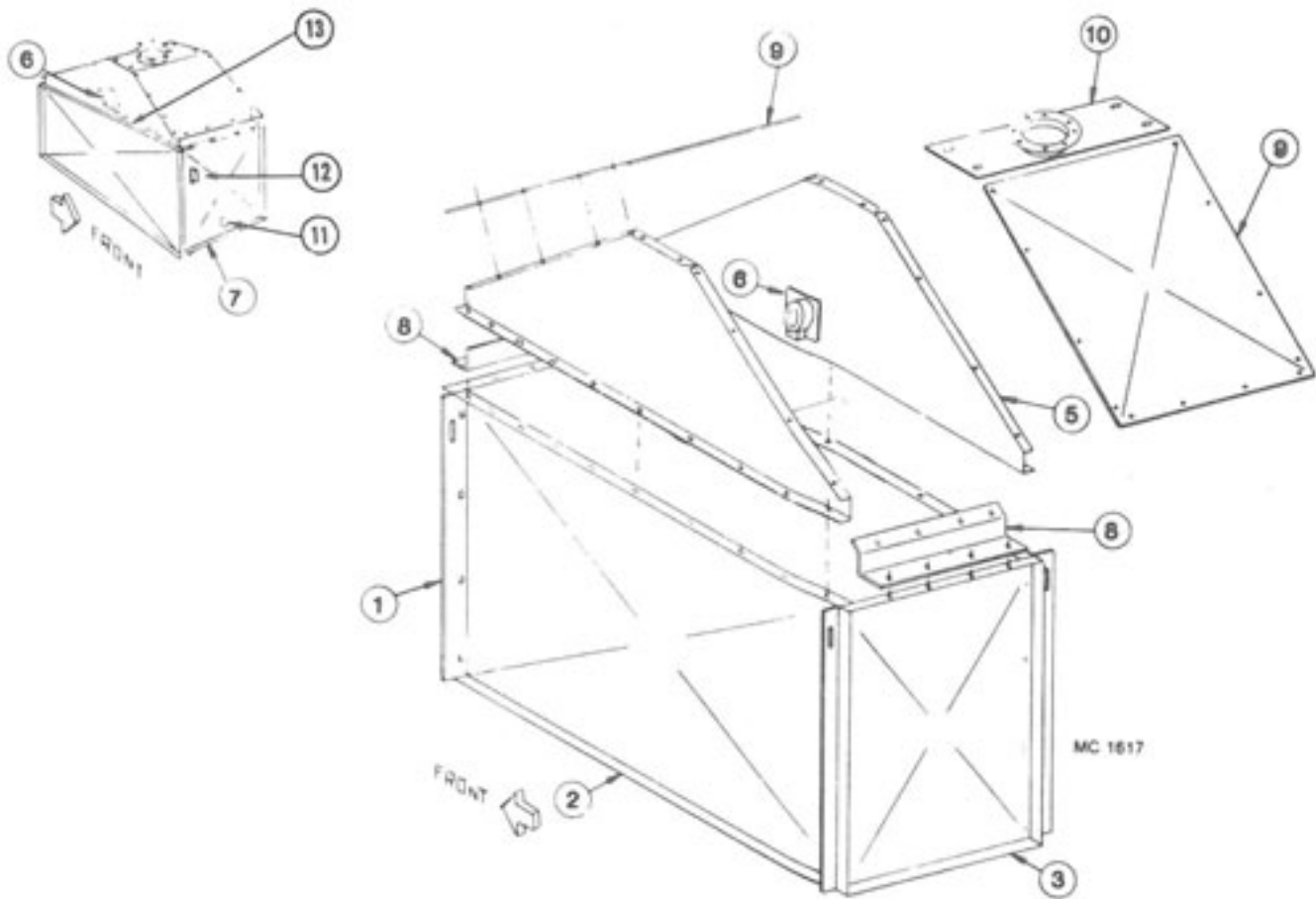
NOTE 1: This decal is imprinted "Model 975." For other models, order one of 128 8331 and one of Ref. 1 to be placed over "Model 975."

Fan Housing

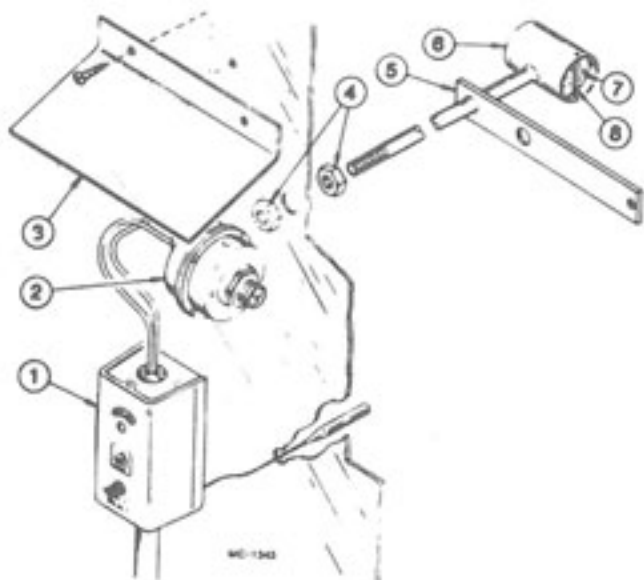


| Ref. | Part No. | Qty. | Description |
|------|----------|------|--|
| 1 | 128 8983 | - | Thermometer - 15' Capillary (Mounting Bracket included) |
| 2 | 121 2883 | 1 | Thermometer Sensing Bulb Bracket |
| 3 | 121 2882 | 1 | Thermometer Sensing Bulb Clip |
| 4 | 124 4824 | 1 | Thermometer Mount Plate (Single) |
| 5 | 128 0302 | 1 | Front Panel |
| 6 | 124 4460 | 1 | Fan Housing Support - Right |
| 7 | 124 4459 | 1 | Fan Housing Support - Left |
| 8 | 124 4464 | 1 | Fan Housing Support Panel |

370C HOPPER AND HOPPER EXTENSION

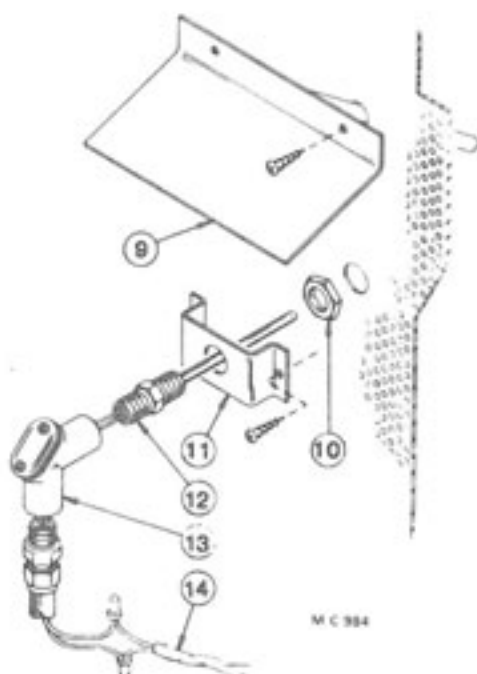


| Ref. | Part No. | Qty. | Description |
|------|----------|------|---|
| 1 | 129 3412 | 4 | Lifting Bar |
| 2 | 129 2836 | 2 | Hopper Side Gal. |
| 3 | 129 4950 | 1 | Rear Hopper End Panel Gal. |
| 4 | 129 3412 | 4 | Lifting Bar |
| 5 | 124 4777 | 2 | Hopper Extension |
| 6 | 128 6992 | 1 | Level Switch |
| 7 | 129 4951 | 1 | Front Hopper End Panel Gal. |
| 8 | 124 4776 | 2 | Hopper Extension End Angle |
| 9 | 124 4775 | 2 | Hopper Extension Top |
| 10 | 128 0336 | 1 | Grain Receiving Inlet |
| 11 | 129 5702 | 1 | Port View Lens |
| 12 | 128 6922 | 1 | Slater Box |
| 13 | | 1 | $\frac{1}{2}$ x 46 $\frac{3}{4}$ " Metal Conduit (Level Switch) |
| | | 1 | $\frac{1}{2}$ " 90° EMT Connector |
| | | 1 | $\frac{1}{2}$ " Straight EMT Connector |



Air Pressure and High Limit Switches

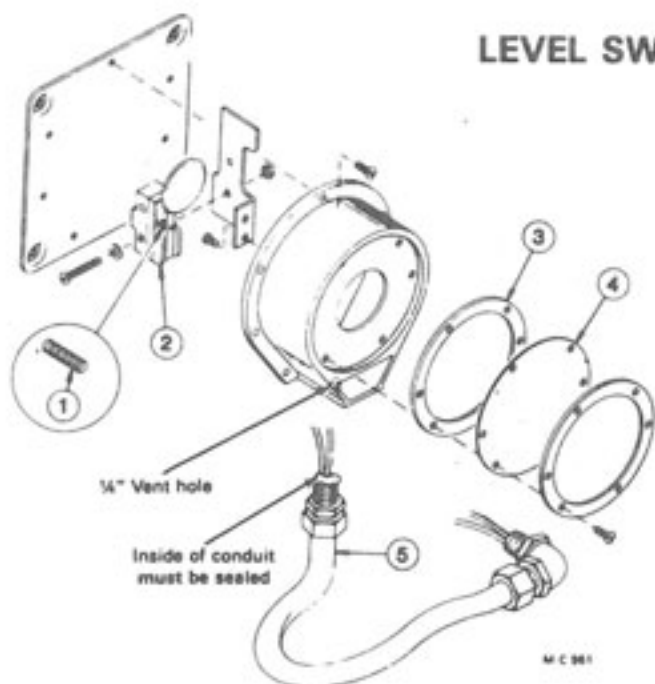
| Ref. | Part No. | Description |
|------|----------|---|
| 1 | 124 6934 | High Limit Switch - Adjustable-Manual Reset |
| 2 | 121 6849 | Air Pressure Switch |
| 3 | 121 2946 | High Limit Switch Cover |
| 4 | 121 8000 | Pipe Locknut - 1/4" |
| 5 | 121 2007 | Air Pressure Tube Brkt. |
| 6 | 121 0169 | Air Pressure Tube |
| 7 | 121 5716 | Air Pressure Tube Filter |
| 8 | ----- | Filter Retainer (Wire) |



Moisture Control Probe

| Ref. | Part No. | Description |
|------|----------|----------------------------|
| 9 | 121 0031 | Moisture Control Shield |
| 10 | 121 6915 | Locknut - 1/2" |
| 11 | 128 3007 | Bracket |
| 12 | 124 6893 | Thermistor (Sensing Probe) |
| 13 | 123 8089 | 1/2" Handy Ell |
| 14 | 125 6908 | 18/2 PVC Cord w/Shield |

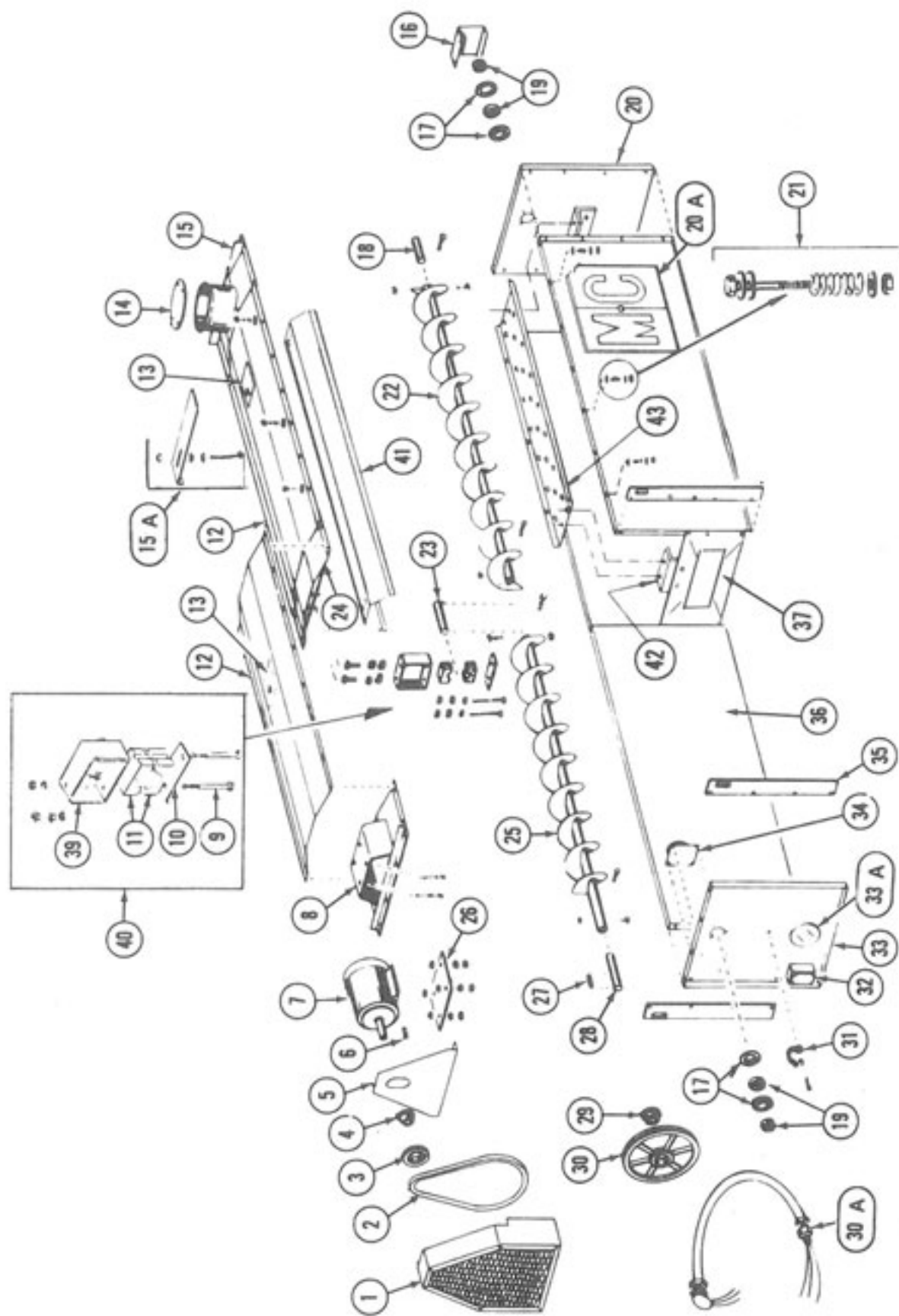
LEVEL SWITCH ASSEMBLY



| Ref. | Part No. | Qty. | Description |
|------|----------|------|------------------------------|
| — | 128 6992 | 1 | Level Switch (Less ref. 5) |
| 1 | 122 6847 | 1 | Spring |
| 2 | 122 6848 | 1 | Microswitch Ass'y |
| 3 | 122 6850 | 1 | Gasket |
| 4 | 122 6849 | 1 | Diaphragm (Teflon) |
| 5 | 128 1995 | 1 | Level Switch Wire Ass'y 570C |

Not Shown: Level Switch Wire Ass'y 370C

570 HOPPER AND LEVEL AUGER



MC 1573

570C HOPPER AND LEVEL AUGER

| Ref. | Part No. | Qty. | Description | Ref. | Part No. | Qty. | Description |
|------|----------|------|--|------|----------|------|--|
| 1 | 129 0003 | 1 | Level Auger Guard | 22 | 128 0122 | 1 | Level Auger (93 1/2" RH flighting) |
| 2 | 128 6103 | 1 | Level Auger Belt | 23 | 128 5050 | 1 | Level Auger Center Shaft (1 1/2" x 10 1/4") |
| 3 | ---- | - | 2/3V/710 (banded belt) or 128 6104 in matched set of two | 24 | 129 0000 | 1 | Level Auger Support |
| | 128 6207 | 1 | Level Auger Motor Sheave "SH" | 25 | 128 0317 | 1 | Level Auger (82 3/4" RH flighting) |
| | 128 6220 | 1 | 3V/3.65 x 2 Groove 60 Cycle | 26 | 129 4202 | 1 | Level Auger Motor Mt. Plate |
| 4 | 128 6214 | 1 | 3V/4.50 x 2 Groove 50 Cycle | | 000 8161 | 4 | 1/2-13 x 3 1/2" Capscrew (Full thread) |
| | | | Level Auger Motor Bushing - 1 1/2" SH | | 000 8170 | 4 | 1/2-13 Flanged Locknut |
| | | | Bushing for 3HP & 5HP motor | | 000 8163 | 8 | 1/2-13 Hex Nut |
| | | | (Incl. capscrews & lockwashers) | 27 | 001 5120 | 1 | Key - 1/2" x 1 1/2" |
| 5 | 129 4944 | 1 | Level Auger Guard Back | 28 | 128 5051 | 1 | Level Auger Front Shaft (1 1/4" x 10") |
| 6 | 001 5119 | 1 | Key - 1/2 x 1/2 x 2" (3HP motor) | 29 | 121 6241 | 1 | 1 1/2" SK Bushing (Incl. capscrews & lockwashers) |
| 7 | 128 6818 | 1 | 230/460V 3HP 30 Motor | 30 | 128 6208 | - | Level Auger Sheave "SK" 3V/19.0 x 2 Grv. |
| 8 | 129 0001 | 1 | Level Auger Motor Mt. | 30A | 128 1960 | 1 | Flexible Conduit w/Wires |
| 9 | 001 8287 | 2 | 3/8-16 x 3 3/4" Capscrew - Grd. 5 | 31 | 128 8951 | 1 | Rubber Strap w/Hook |
| | 000 8162 | 4 | 3/8-16 Hex Nut | 32 | 128 6922 | 1 | Slatter Box (1/2") |
| 10 | 128 3415 | 2 | Bearing Hanger Bar | 33 | 129 2835 | 1 | Upper End Panel - Front |
| 11 | 128 6021 | 1 | Wood Bearing - 1 1/2" (2 halves) | 33A | 129 5702 | 1 | Port View Lens |
| 12 | 129 2945 | 2 | Hopper Cover - Front & Rear (76") | 34 | 128 6992 | 1 | Level Switch (See pg. 34) |
| 13 | 128 8355 | 2 | Warning Decal | 35 | 129 3412 | 4 | Lifting Bar |
| 14 | 129 4204 | 1 | Receiving Tube Cover | 36 | 129 2836 | 4 | Hopper Side |
| 15 | 129 0002 | 1 | Receiving Hopper | 37 | 129 2715 | 1 | Hopper Sectional Panel |
| 15A | 129 4205 | 1 | Flow Restrictor | 39 | 128 0292 | 1 | Level Auger Brg. Support |
| | 129 5703 | 1 | Position & Locking Bolt | | 001 8135 | 2 | 3/8-16 x 1" Capscrew - Grd. 5 |
| | 000 8168 | 3 | 3/8-16 Flanged Locknut | | 001 8139 | 2 | 3/8" Lockwasher |
| 16 | 129 4947 | 1 | Stub Guard | | 000 8162 | 2 | 3/8-16 Hex Nut |
| 17 | 001 6004 | 4 | Bearing Flangette 1 1/2" | 40 | 122 1008 | 1 | Level Auger Brg. Kit (Incl. Ref. 9, 10, 11, & 39 in quantities reqd. for one brg.) |
| 18 | 128 5052 | 1 | Level Auger Rear Shaft (1 1/4" x 8") | | | | Auger Cover Short |
| 19 | 001 6003 | 2 | Bearing w/Lock Collar - 1 1/2" | | | | Auger Pan Support Bracket |
| 20 | 129 2834 | 1 | Upper End Panel - Rear | | | | Pan Under Auger |
| 20A | 121 8343 | 2 | M-C Decal (26 1/2" x 23") | 41 | 129 2838 | 1 | |
| 21 | 000 8101 | 12 | 1/4-20 x 2" Capscrew | 42 | 128 2760 | 2 | |
| | 131 8718 | 12 | Spring (5/8" OD x 1 1/2") Plated | 43 | 128 2761 | 1 | |
| | 000 8172 | 36 | 1/4" Flatwasher | | | | |
| | 000 8210 | 12 | 1/4-20 Two-Way Locknut | | | | |

DRYER MOTORS, CIRCUIT BREAKERS AND MAGNETIC STARTERS

| MOTOR | | | CIRCUIT BREAKER | | | MAGNETIC STARTER | | | |
|-------------------------------|------|----------|-----------------|------|----------------|------------------|----------------|-----------------------|-------------------|
| HP | *FLA | Part No. | Part No. | Amps | Square "D" No. | Starter Part No. | Square "D" No. | Thermal Unit Part No. | Thermal Unit Size |
| 380V - 3 PHASE - 50 HZ | | | | | | | | | |
| †1.5 | 2.9 | 127 6860 | 128 6931 | 15 | FAL 36015 | 124 6931 | DPS033 | 128 6951 | B 6.25 |
| **1.5 | 2.9 | 123 6876 | 128 6931 | 15 | FAL 36015 | 124 6931 | DPS033 | 128 6951 | B 6.25 |
| 2 | 3.7 | 121 6861 | 128 6931 | 15 | FAL 36015 | 124 6931 | DPS033 | 120 6845 | B 6.90 |
| **2 | 3.7 | 124 6867 | 128 6931 | 15 | FAL 36015 | 124 6931 | DPS033 | 120 6845 | B 6.90 |
| 3 | 5.2 | 128 6818 | 128 6931 | 15 | FAL 36015 | 124 6931 | DPS033 | 128 6947 | B 9.10 |
| 5 | 8.0 | 128 6815 | 128 6931 | 15 | FAL 36015 | 124 6931 | DPS033 | 128 6863 | B 11.5 |
| 10 | 16.2 | 124 6963 | 125 6928 | 30 | FAL 36030 | 124 6931 | DPS033 | 120 6855 | B 25 |
| 15 | 23.7 | 124 6945 | 128 6937 | 60 | FAL 36060 | 124 6930 | DPS053 | 128 6946 | B 36 |
| 20 | 32.1 | 124 6946 | 124 6905 | 70 | FAL 36070 | 124 6930 | DPS053 | 128 6949 | B 45 |
| 415V - 3 PHASE - 50 HZ | | | | | | | | | |
| †1.5 | 2.5 | 127 6860 | 128 6931 | 15 | FAL 36015 | 124 6931 | DPS033 | 120 6848 | B 3.70 |
| 2 | 3.5 | 121 6861 | 128 6931 | 15 | FAL 36015 | 124 6931 | DPS033 | 128 6948 | B 4.15 |
| 3 | 5.2 | 128 6818 | 128 6931 | 15 | FAL 36015 | 124 6931 | DPS033 | 120 6845 | B 6.90 |
| 5 | 7.6 | 128 6815 | 128 6931 | 15 | FAL 36015 | 124 6931 | DPS033 | 128 6863 | B 11.5 |
| 10 | 14.9 | 124 6963 | 125 6928 | 30 | FAL 36030 | 124 6931 | DPS033 | 120 6855 | B 25.0 |
| 15 | 22.4 | 124 6945 | 128 6930 | 40 | FAL 36040 | 124 6930 | DPS053 | 128 6946 | B 36 |
| 20 | 28.2 | 124 6946 | 128 6937 | 60 | FAL 36060 | 124 6930 | DPS053 | 128 6949 | B 40 |

*If FLA (Full Load Amps) shown does not match FLA imprinted on motor name plate, refer to Square D charts for correct thermal unit size.

** - "C" Face

† - 7/8" shaft

115V COILS AND INTERLOCKS

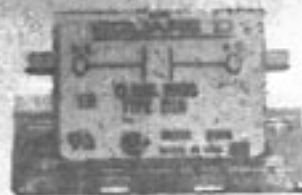
| STARTER | | COIL | | INTERLOCK | |
|----------------|----------|----------|-------------|-----------|-------------|
| Sq. "D" No. | M-C No. | M-C No. | Sq. "D" No. | M-C No. | Sq. "D" No. |
| DPA73 | 124 1082 | 122 6861 | 9998-DA3V02 | 124 6933 | 9999-D-20 |
| DPA93 | 124 1083 | 122 6861 | 9998-DA3V02 | 124 6933 | 9999-D-20 |
| DPS053 (50) HZ | 124 6930 | 122 6860 | 9998-DA1V02 | 124 6933 | 9999-D-20 |
| DPS033 (50) HZ | 124 6931 | 122 6860 | 9998-DA1V02 | 124 6933 | 9999-D-20 |
| DPS033 (60) HZ | 124 6931 | 122 6860 | 9998-DA1V02 | 124 6933 | 9999-D-20 |
| DPS053 (60) HZ | 124 6930 | 122 6860 | 9998-DA1V02 | 124 6933 | 9999-D-20 |

JUMPER STRAP KITS AND CONTACT KITS

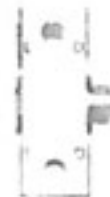
| STARTER | | JUMPER STRAP KIT (2 straps per kit) | | CONTACT KIT | |
|----------------|----------|--|-------------|-------------|-------------|
| Sq. "D" No. | M-C No. | M-C No. | Sq. "D" No. | M-C No. | Sq. "D" No. |
| DPA73 | 124 1082 | 124 6885 | 9998-S032 | 122 6863 | 9998-DRC7 |
| DPA93 | 124 1083 | 124 6885 | 9998-S032 | 122 6864 | 9998-DRC9 |
| DPS033 (50) HZ | 124 6931 | 120 6841 | 9998-S031 | | |
| DPS053 (50) HZ | 124 6930 | 120 6841 | 9998-S031 | 122 6862 | 9998-DRC5 |
| DPS033 (60) HZ | 124 6931 | 120 6841 | 9998-S031 | | |
| DPS053 (60) HZ | 124 6930 | 120 6841 | 9998-S031 | 122 6862 | 9998-DRC5 |



Magnetic
Coil



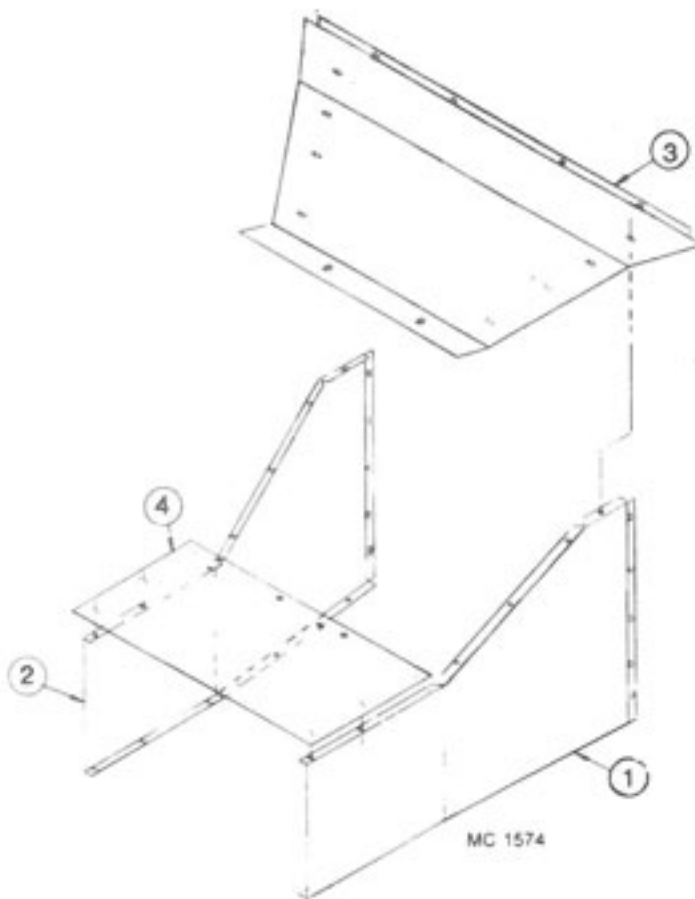
Interlock



Thermal
Unit

M-C 1402

370C & 570C MIXING CHAMBER

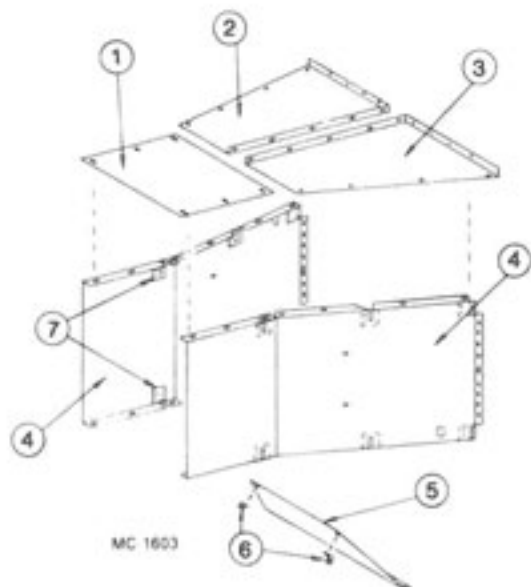


370C MIXING CHAMBER

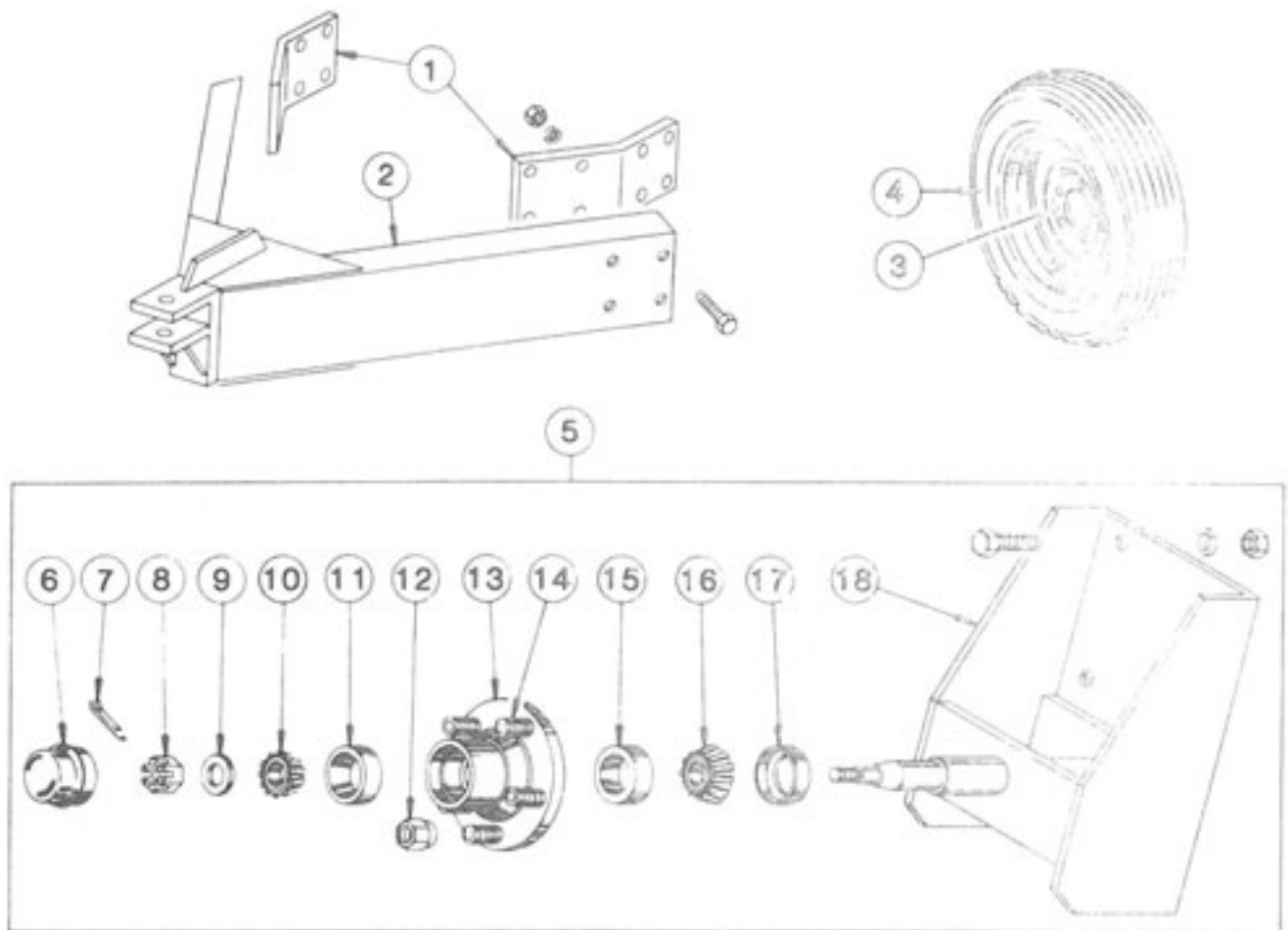
| Ref. | Part No. | Qty. | Description |
|------|----------|------|--------------------------------------|
| 1 | 124 2863 | 1 | Mixing Chamber Side Right |
| 2 | 124 2862 | 1 | Mixing Chamber Side Left |
| 3 | 124 2867 | 1 | Mixing Chamber Top |
| 4 | 128 2915 | 1 | Mixing Chamber Top End |
| | 001 8202 | 42 | 5/16"-18 x 3/4" Washer Head Hex Bolt |
| | 000 8169 | 42 | 5/16"-18 Flanged Locknut |
| | 000 8184 | 10 | 8-18 x 1/2" Sheet Metal Screw |

570C MIXING CHAMBER

| Ref. | Part No. | Qty. | Description |
|------|----------|------|-------------------------------------|
| 1 | 128 2915 | 1 | Chamber Top-End |
| 2 | 128 2912 | 1 | Chamber Top-Left |
| 3 | 128 2911 | 1 | Chamber Top-Right |
| 4 | 128 2918 | 2 | Chamber Side |
| 5 | 128 2914 | 1 | Chamber Deflector |
| 6 | 001 3302 | 2 | Universal Angle Clip |
| 7 | 128 4942 | 13 | Mixing Chamber Patch |
| - | 001 8202 | 48 | 5/16-18 x 3/4" Washer Head Hex Bolt |
| - | 000 8169 | 48 | 5/16-18 Flanged Locknut |
| - | 000 8173 | 48 | 5/16" Flatwasher |
| - | 000 8184 | 48 | 8-18 x 1/2" Sheet Metal Screw |
| - | 128 6848 | 1 | 3/4" K.O. Bushing |
| - | 128 6830 | 2 | Hole Plug |



PORTABILITIES (Optional)

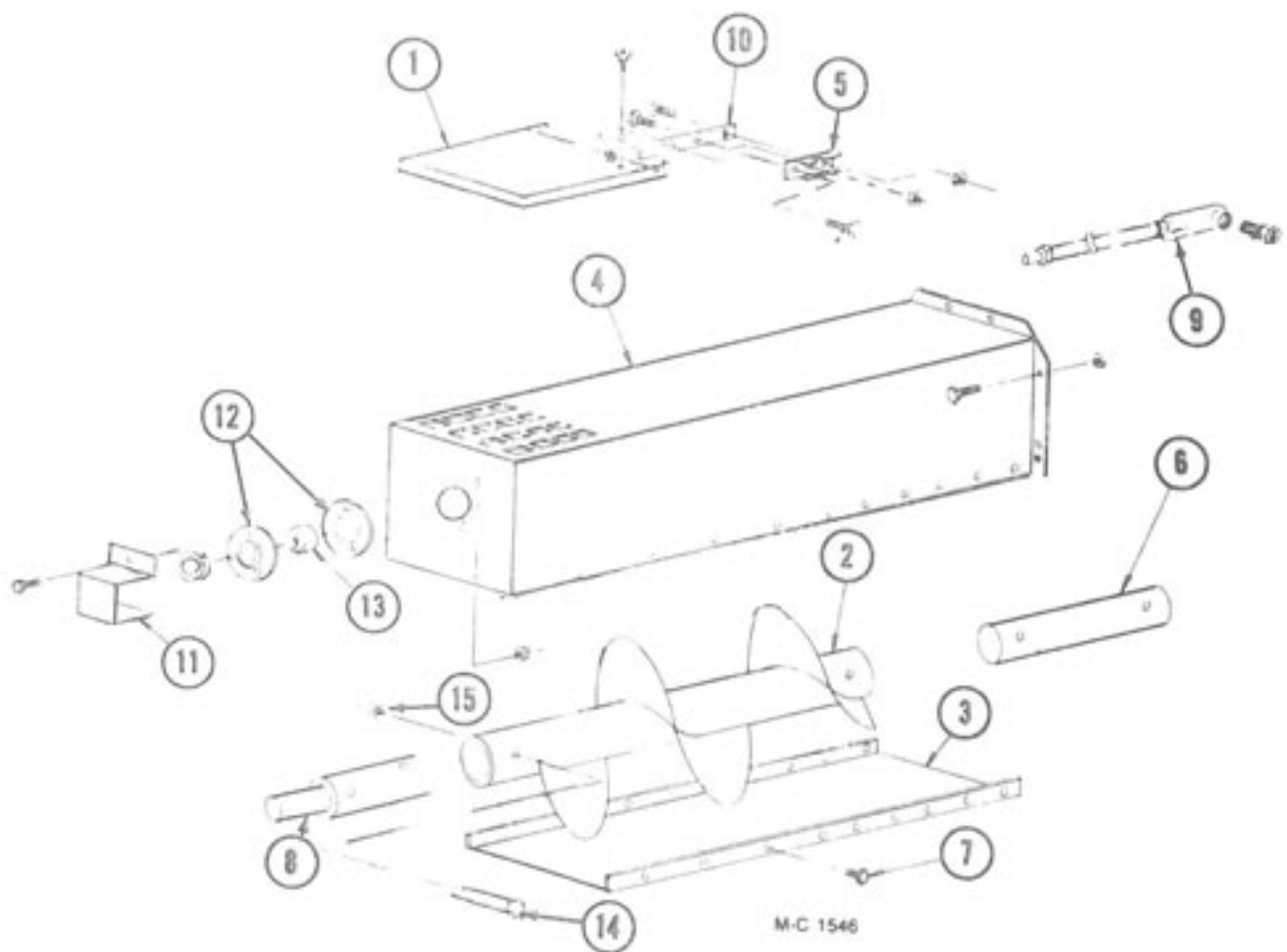


120 1030 - 4 Wheel Portabilities (Incl. Ref. 1 & 2 and four of Ref. 3 & 5 less tires)

11 L 580

| Ref. | Part No. | Qty. | Description | Ref. | Part No. | Qty. | Description |
|------|----------|------|--|------|----------|------|--|
| 1 | 128 3671 | 2 | Pole Mount Brkt. | 6 | 001 8996 | 1 | Hub Cap |
| | 128 8196 | 8 | 3/4-10 x 2 1/2" Capscrew - Grd.5 | 7 | 001 8252 | 1 | Cotter Pin - 3/32" x 1" |
| | 000 8182 | 8 | 3/4" Lockwasher | 8 | 001 8253 | 1 | Spindle Nut |
| | 000 8165 | 8 | 3/4-10 Hex Nut | 9 | 001 8254 | 1 | Spindle Washer |
| 2 | 120 0047 | 1 | Dryer Pole | 10 | 001 6000 | 1 | Bearing Cone - Outer |
| | 128 8195 | 8 | 3/4-10 x 2" Capscrew - Grd. 5 | 11 | 002 6000 | 1 | Bearing Cup - Outer |
| | 000 8182 | 8 | 3/4" Lockwasher | 12 | 001 8989 | 5 | 3/4-20 Lip Nut - 45° |
| | 000 8165 | 8 | 3/4-10 Hex Nut | 13 | 001 8992 | 1 | Wheel Hub Ass'y - 5 Bolt (Incl. Ref. 11, 14 & 15) |
| 3 | 001 8993 | 1 | 5 Bolt Wheel - 15" | 14 | 002 8152 | 5 | 3/4-20 x 1 1/2" Stud |
| 4 | 127 8990 | 1 | 7.60 x 15-6 Ply Tubeless Tire | 15 | 002 6001 | 1 | Bearing Cup - Inner |
| 5 | 120 1028 | 1 | Wheel Spindle & Hub Ass'y (Inc. Ref. 6 thru 18) | 16 | 001 6001 | 1 | Bearing Cone - Inner |
| | 000 8146 | 6 | 5/8-11 x 1 1/2" Capscrew - Grd.5 | 17 | 001 8991 | 1 | Seal |
| | 000 8181 | 6 | 5/8" Lockwasher | 18 | 120 0031 | 1 | Wheel Mount |
| | 000 8164 | 6 | 5/8-11 Hex Nut | | | | |

10" Unloading Auger Extension Kit (2') - 127 1229,
(4') - 127 1230, and (6') - 127 1233

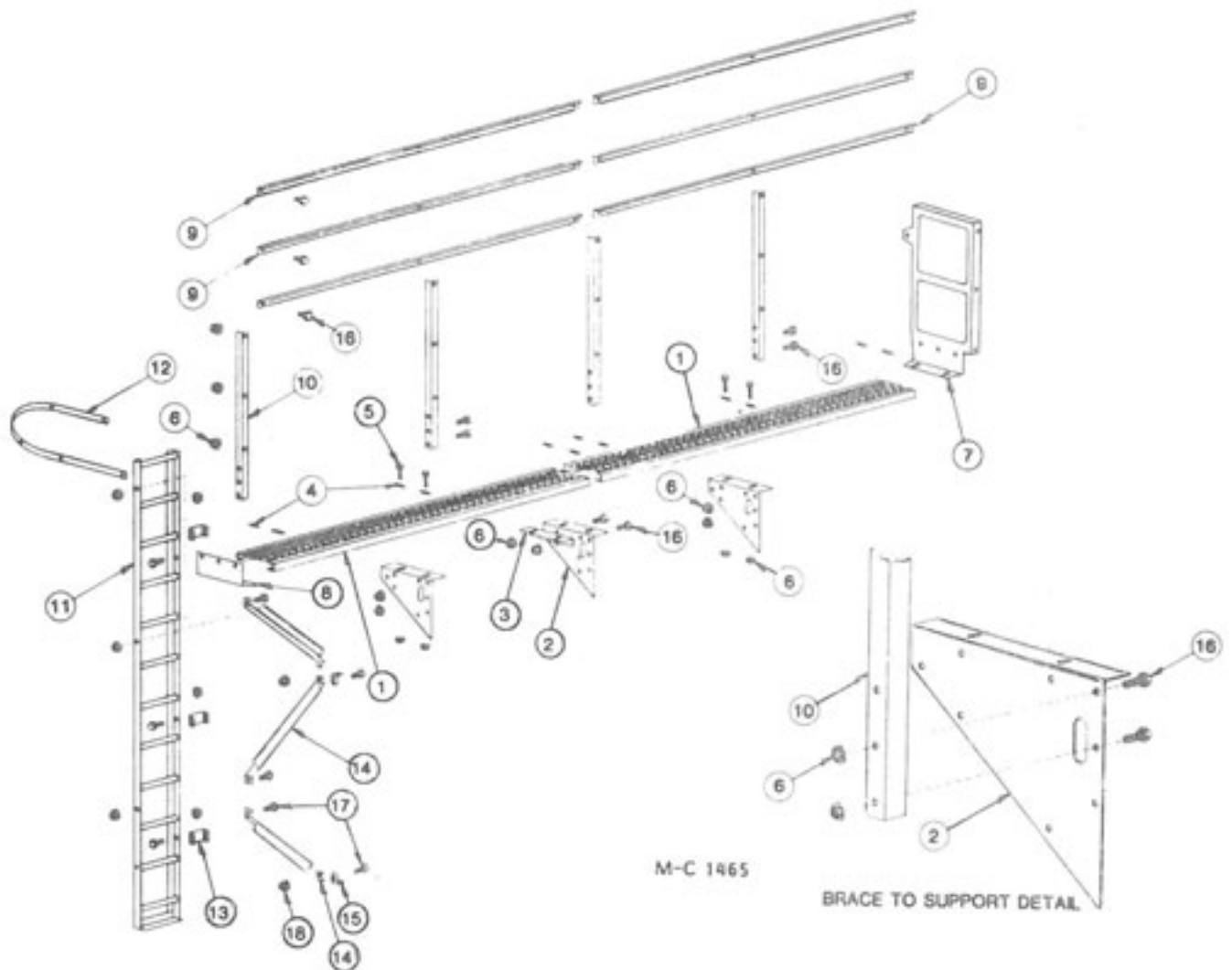


| Ref. | Part No. | Qty. | Description |
|------|----------|------|----------------------|
| 1 | 128 4712 | 1* | Over Load Door |
| 2 | 128 0310 | 1 | 2' Extension Auger |
| | 128 0312 | 1 | 4' Extension Auger |
| | 128 0315 | 1 | 6' Extension Auger |
| 3 | 124 4465 | 1 | 2' Bottom Cover |
| | 124 4466 | 1 | 4' Bottom Cover |
| | 124 4471 | 1 | 6' Bottom Cover |
| 4 | 128 0311 | 1 | 2' Discharge Housing |
| | 128 0313 | 1 | 4' Discharge Housing |
| | 128 0314 | 1 | 6' Discharge Housing |
| 5 | 120 6801 | 1* | Switch Mount Clip |
| 6 | 128 5618 | 1* | Unload Auger Link |

| Ref. | Part No. | Qty. | Description |
|------|----------|------|---|
| 7 | 001 8284 | - | 5/16-12 x 1/2" Tapping Bolt (Qty. - 8, 16 or 24) |
| 8 | 124 5611 | 1* | U.A. Output Shaft |
| 9 | 127 1231 | 1 | 2' Extension Liqueatite Assy. |
| | 127 1232 | 1 | 4' Extension Liqueatite Assy. |
| | 127 1234 | 1 | 6' Extension Liqueatite Assy. |
| 10 | 128 2937 | 1* | Bulb Mount |
| 11 | 128 3011 | 1* | Stub Shaft Guard |
| 12 | 001 6004 | 2* | 1 1/4" Bearing Flangettes |
| 13 | 001 6003 | 1* | 1 1/4" Bearing w/Collar |
| 14 | 000 8229 | 4 | 3/8"-16 x 2 3/4" HHCS Gr.5 ZP |
| 15 | 000 8205 | 4 | 3/8"-16 Flanged Locknut |

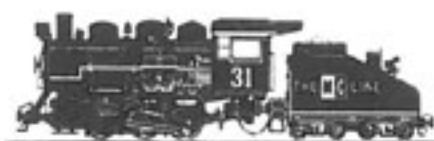
*Not included in kit when field installed.

WALKWAY (Optional)



| Ref. Part No. | Qty | 370 | Qty | 570 | Description |
|---------------|----------|-----|-----|-----|--------------------------------|
| 1 | 128 5712 | 1 | 1 | 1 | Walkway Grating - 95 1/4" |
| | 129 8700 | | | 1 | Walkway Grating - 95 1/4" |
| 2 | 129 2600 | 1 | 3 | | Bridge Support |
| 3 | 129 2602 | 1 | 1 | | Walkway Grating Support |
| 4 | 120 8994 | 6 | 12 | | Walkway Grating Anchor Clip |
| 5 | 001 8276 | 6 | 12 | | 5/16-18 x 3" Carriage Bolt |
| 6 | 000 8169 | 56 | 142 | | 5/16 Flanged Whiz Locknut |
| 7 | 128 2758 | 1 | 1 | | Walkway End Guard 24 x 47 1/2" |
| 8 | 124 2601 | 1 | 1 | | Walkway End Support |

| Ref. Part No. | Qty | 370 | Qty | 570 | Description |
|---------------|----------|-----|-----|-----|--|
| 9 | 129 2004 | 3 | 6 | | Standard Guard Rail |
| 10 | 129 2015 | 2 | 4 | | Guard Rail Brace |
| 11 | 120 0045 | 1 | 1 | | Ladder - 11 1/2' |
| 12 | 128 2031 | 1 | 1 | | Ladder Cage Hoop - 54" |
| 13 | 128 2660 | 3 | 3 | | Ladder Mounting Bracket |
| 14 | 128 2661 | 3 | 3 | | Ladder Mounting Angle |
| 15 | 001 3302 | 3 | 3 | | Angle Clip |
| 16 | 001 8202 | 50 | 130 | | 5/16-18 x 3/4" Hex Washer Head Bolt - Grd. 5 |
| 17 | 001 8209 | 12 | 12 | | 3/8-16 x 1" Hex Washer Head Bolt - Grd. 5 |
| 18 | 000 8168 | 12 | 12 | | 3/8-16 Flanged Locknut |



Iron Horse Quality