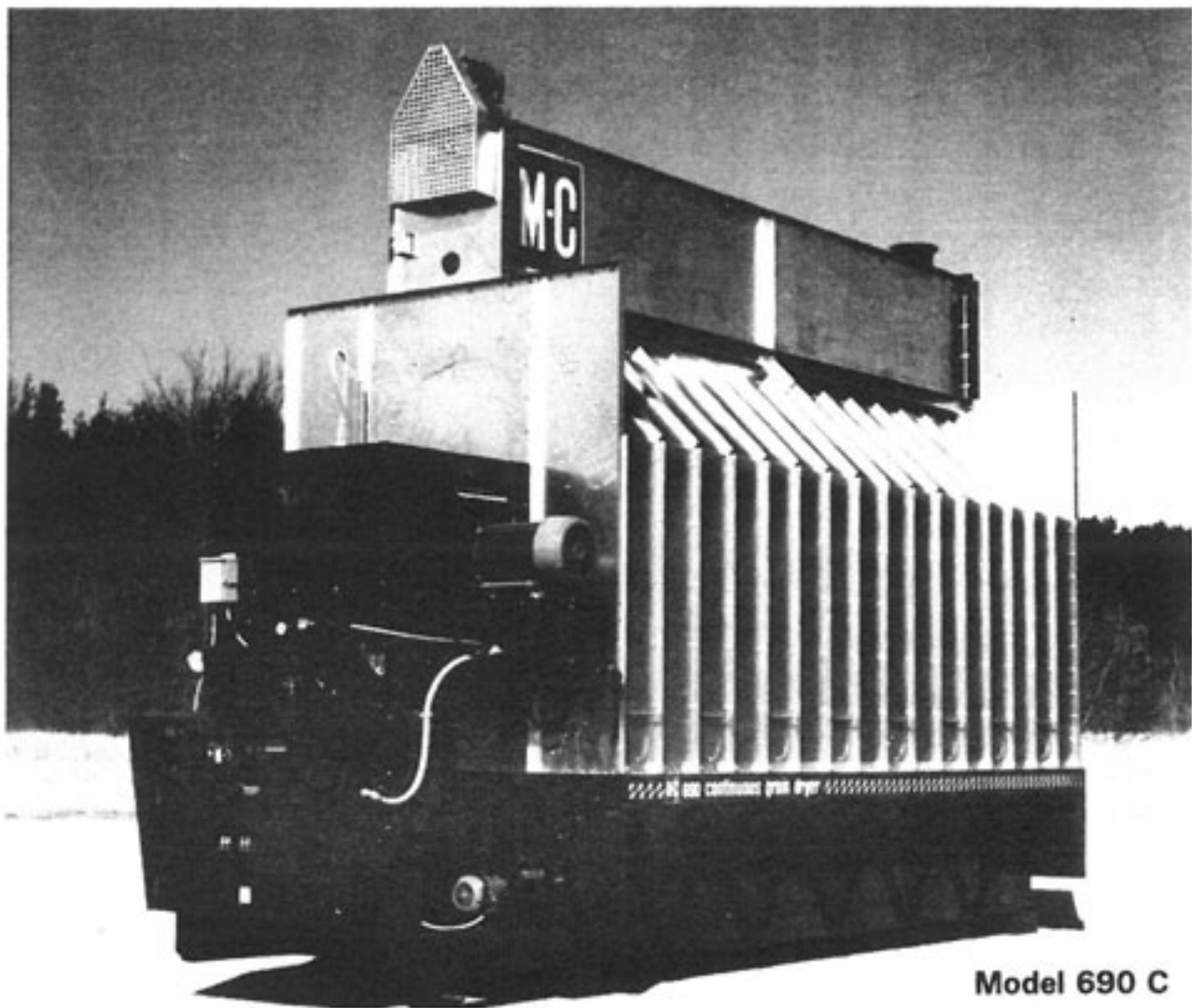




Model 690C & 970C Continuous Flow Grain Dryers

(Starting w/Serial No. 52712)



Model 690 C

PARTS CATALOG

Form No. D333 June 1997

Mathews Company / 500 Industrial Ave., Crystal Lake, IL 60012, U.S.A.
815/459-2210 FAX: 815/459-5889

CONTENTS

	Page
Introduction	
Parts Ordering Instructions	1
Model and Serial Number Location	1
Capscrew Grade Identification	1
Parts	
Air Pressure Switch	30
Augers	
Level	26-29
Unload	6
Belts	
Level Auger	26-29
Unload Auger	2-5
Level Indicator	26-29
Burner	14-15
Cabinets	
115V Control Cabinet - 690C & 970C	20
Circuit Breakers - Level Auger, Unload Auger & Fan Motor	32-33
Coils	
Magnetic Starter - 115V	32-33
1 ¼" Solenoid Valve	17
½" Solenoid Valve	17
Contacts - For Magnetic Starters	34
Control Panel Lights, Switches and Controls	19
Decal Kit - All Models	23
Electrical Components in 115V Control Cabinet	18
Electrode	14
End Panels	
690C	10
970C	10
Fans	22
Fan Motors	22
Fan Motor Mount	22
Fan Housing	23
Flame Sensing Probe	15
Guards	
Fan	13
Level Auger Motor	26
SCR Drive	13

Continued on next page

	Page
High Limit Switch	30
Hopper	26-29
Ignition Board	18
Ignition Wires	14
Interlocks - For Magnetic Starters	34
Jumper Straps - For Magnetic Starters	34
Level Auger	
Belts	26-29
Motor	26-29
Motor Mount	26-29
Switch Assembly (Level Indicator)	30
Lights, Control Panel	19
LP Gas Liquid Line Piping	16
LP Gas Manifold and Piping	16
Magnetic Starters	32-33
Manifolds	17
LP Gas	17
Natural Gas	17
Metering Rolls	2-5
Mixing Chamber	25
Modulating Valves	17
Modulating Valve Power Elements	17
Moisture Control	
Potentiometer	19
Moisture Control	18
Thermistor Sensor	30
Motors	22 & 32-33
Natural Gas Manifold and Piping	17
Portabilities	35
Pressure Gauge (Gas)	17
Pressure Regulator (LP Gas)	17
Pressure Regulator (LP Gas) Repair Kit	17
Relays	18
Relief Valve - LP Gas	16
SCR Drive Unload System	
Control Board	18
Motor and Gear Box	12-13
Potentiometer	19

Continued on next page

Screens	
Base Screens	7
Upper Screens	8-9
Solenoid Valves	
1 ¼" - LP & Natural Gas	17
½" - LP Gas	17
Switches, Control Panel	19
Tank Valve - LP Gas	16
Terminal Tracks	18
Thermistor	30
Thermometer	24
Timers	
10 Second - Ignition	18
.1 to 8 Minute Adjustable - Level Auger	18
60 Minute Adjustable - Low Grain Level	18
Transformers	21
Unload Auger 10"	
Auger	2-5
Belts	12
Extension Kits (Optional) 2 ft., 4 ft. or 6 ft.	31
Motor	12
Pans	6
Vaporizer Coil - LP Gas	14
Walkway (Optional)	36

NOTES

NOTES

INTRODUCTION

Parts Ordering Instructions

1. Order parts from your local M-C Dealer or distributor.
2. Always furnish the Grain Dryer model and serial number. This information is stamped on the serial number plate.
3. When ordering parts be sure to furnish the part number, description and quantity required.

NOTE: Attaching hardware is listed (but not included) with the main part. It must be ordered separately.

4. Inspect all shipments upon receipt. If any packages and/or boxes are missing, or parts are damaged, file a claim with the carrier immediately. Failure to do so may void a claim. Check the shipment against the packing list carefully. Report any shortages to the shipper immediately.
5. Do not return any parts to the Mathews Company without a "Return Goods Authorization" from the factory. All return parts shipments must be shipped prepaid (COD shipments will not be accepted). Shipments must also include the following:
 - A. A letter of explanation including the "Return Goods Authorization Number," your name and address.
 - B. A list of all parts being returned. List must include part numbers, description, quantity, and original invoice number.

Model and Serial Number Location

The model and serial number of your Grain Dryer are stamped on a plate located on the left front end

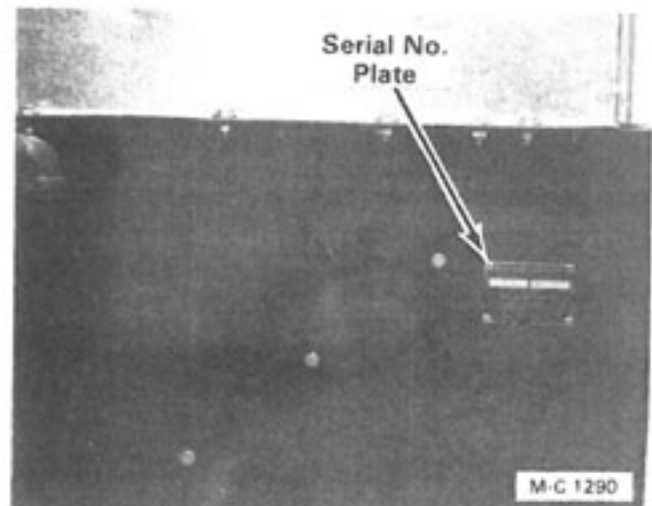


Figure 1

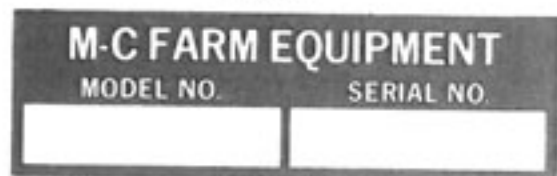


Figure 2

panel, see Figure 1. On late production dryers, the plate is on the dryer front base panel just below the location shown in Figure 1. Record the model and serial number in the blank spaces in Figure 2.

Capscrew Grade Identification

There are four grades of hex-head capscrews. Grade 1 and 2 are common capscrews, grade 5 and 8 are used when greater strength is required. Each grade can be identified by the marking on the head of the capscrew, see chart below.

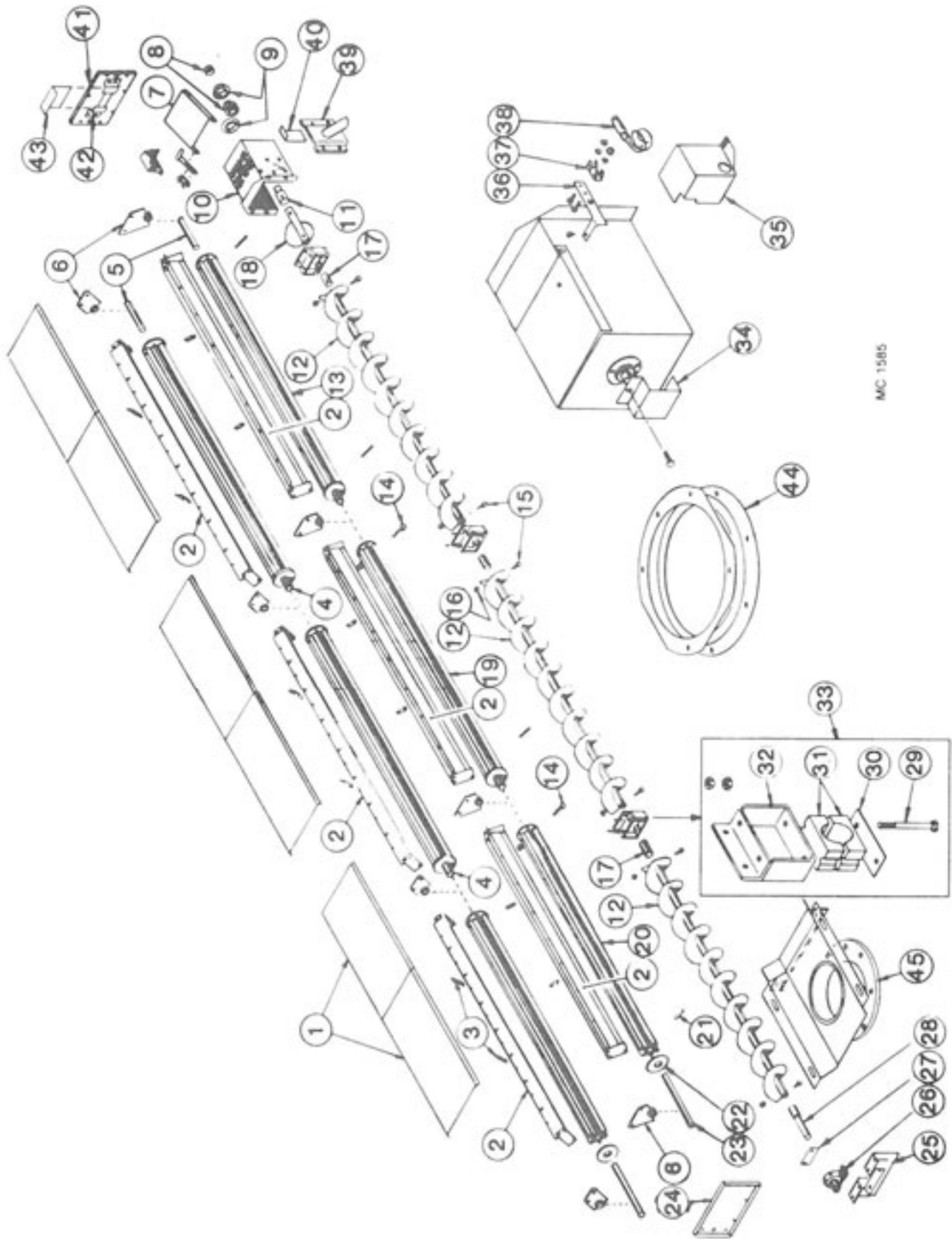
When replacing capscrews, be sure to use the correct size and grade. If a specific grade is not shown as part of the description, the capscrew is a grade 1 or 2.

CAPSCREW GRADE IDENTIFICATION CHART

S.A.E. Grade	Description	Capscrew Head Marking*
1	WILL HAVE A PLAIN HEAD - NO RADIAL LINES	
2	Low or Medium Carbon Steel Not Heat Treated	
5	WILL HAVE 3 RADIAL LINES Quenched and Tempered Medium Carbon Steel	
8	WILL HAVE 6 RADIAL LINES Quenched and Tempered Special Carbon or Alloy Steel	

*The center marking identifies the capscrew manufacturer.

Metering Rolls and Unload Auger



MC 1585

Metering Rolls and Unload Auger

Ref. Part No.	Qty. (16')	Qty. (24')	Description
1	128 2890	4	Unload Auger Cover
	001 8111	8	5/16-18 Clip Nut
	001 8114	8	5/16-18 x 3/4" Wing Screw
	000 8173	8	5/16" Flatwasher
2	128 0225	4	Inner Screen Mount
	001 8202	18	5/16-18 x 3/4" Hex Washer Head Bolt
	000 8169	18	5/16-18 Flanged Locknut
3	128 8958	8	Support Rod (3/8" x 4 3/4")
	000 8173	8	5/16" Flatwasher
	000 8168	24	3/8-16 Flanged Locknut
4	121 5043	2	Rear & Center Metering Roll Shaft - 1 1/4" x 7" (press fit in metering roll)
5	121 5042	2	Rear Metering Roll Stub Shaft - 1 1/4" x 5" (press fit in metering roll)
6	128 1063	6	Metering Roll Brg. w/Bronze Bushing
	001 8202	12	5/16-18 x 3/4" Hex Washer Head Bolt
	000 8169	12	5/16-18 Flanged Locknut
7	128 4712	1	Over Load Door
	001 8210	2	3/8-16 x 3/4" Hex Washer Head Bolt
	000 8205	2	3/8-16 Top Lock Flanged Nut
8	001 6003	1	1 1/4" Bearing w/Lock Collar
9	001 6004	2	1 1/4" Bearing Flangette
	001 8209	3	3/8-16 x 1" Hex Washer Head Bolt
	000 8168	3	3/8-16 Flanged Locknut
10	128 0345	1	Unload Auger Discharge Round (Front Unload - See Note 1)
	001 8210	6	3/8-16 x 3/4" Hex Washer Head Bolt
	000 8205	6	3/8-16 Top Lock Flanged Nut
11	124 5611	1	Unload Auger Output Shaft (Front Unload - See Note 1)

Ref. Part No.	Qty. (16')	Qty. (24')	Description	
12	128 0244	2	3	Unload Auger Section 10" (See Note 2)
13	121 1082	2	2	Rear Metering Roll Assembly (incl. shafts)
14	000 8114	2	4	5/16-18 x 2 1/2" Capscrew
	000 8222	2	4	5/16" Lockwasher
	000 8159	2	4	5/16-18 Hex Nut
15	000 8229	8	12	3/8-16 X 2 3/4" Capscrew - Grd.5
16	000 8205	8	12	Top Lock Flanged Nut
17	128 5618	2	3	Unload Auger Link
18	128 0309	1	1	Standard Auger Weld
19	121 1083	-	2	Center Metering Roll Assembly (incl. shafts)
20	128 1254	2	2	Front Metering Roll Assembly (incl. shafts)
21	000 8259	3	4	Roll Pin 5/16" x 1 3/4"
22	121 4438	AR	AR	Metering Roll Washer - 11 Gauge
	128 4970	AR	AR	Metering Roll Washer - 16 Gauge
23	128 5042	2	2	Front Metering Roll Shaft - 1 1/4" x 13 1/4" (press fit in metering roll)
24	128 2894	1	1	Base Panel Access Door (17 1/2" x 10 1/2")
	001 8284	14	14	5/16-12 x 1/2" Self Tapping Screw
25	128 0247	1	1	Unload Auger Front Plate
	001 8210	4	4	3/8-16 x 3/4" Hex Washer Head Bolt
	000 8168	4	4	3/8-16 Flanged Locknut

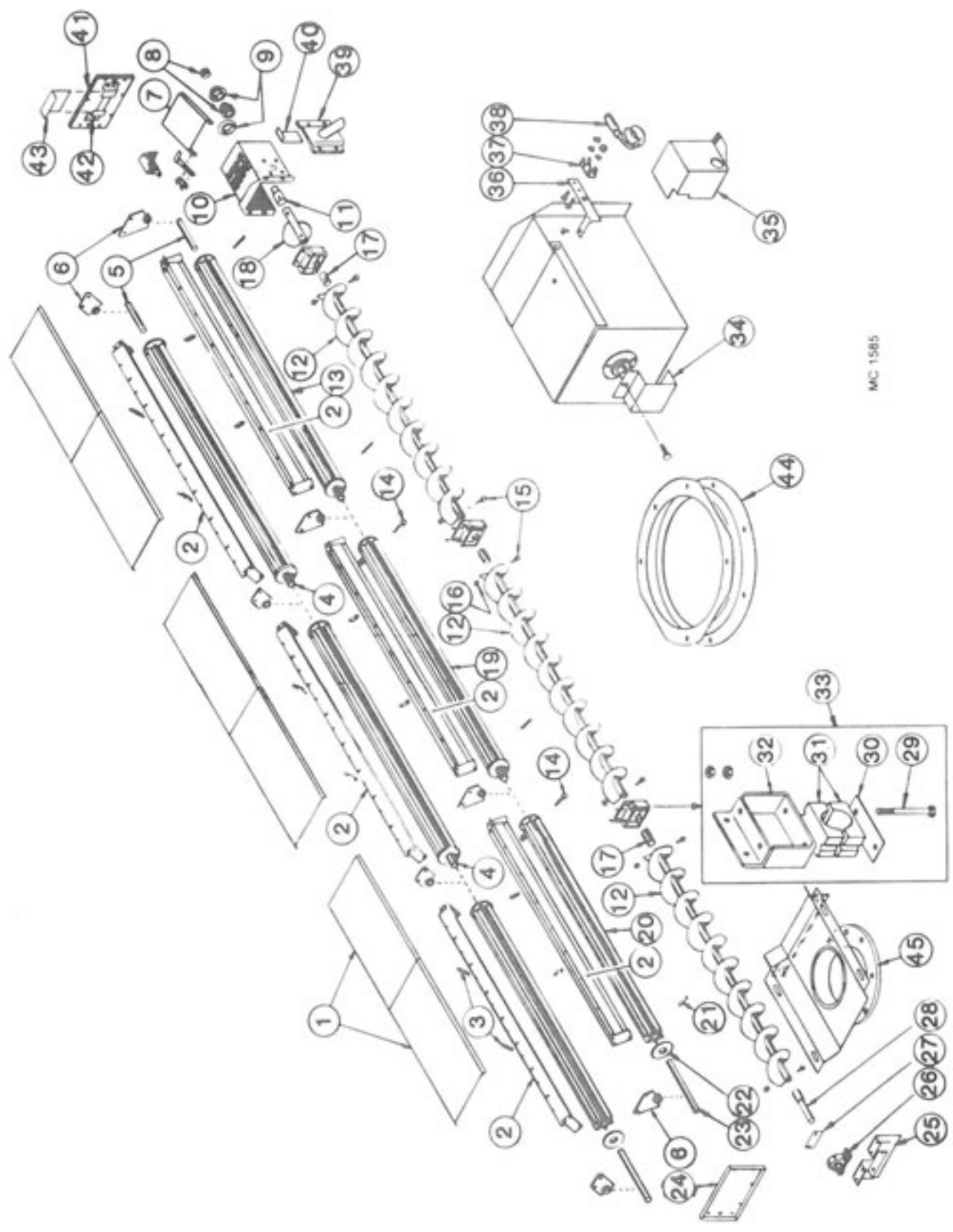
NOTE 2: Unload Auger Sections 10" up to Serial #54014 use the following:

128 0243	Front
128 0245	Rear
128 0244	Center

NOTE 1: Dryers w/Front Unload - Ref. 10 use 127 4431 and Ref. 11 use 128 5994 output shaft.

Continued on next page

Metering Rolls and Unload Auger

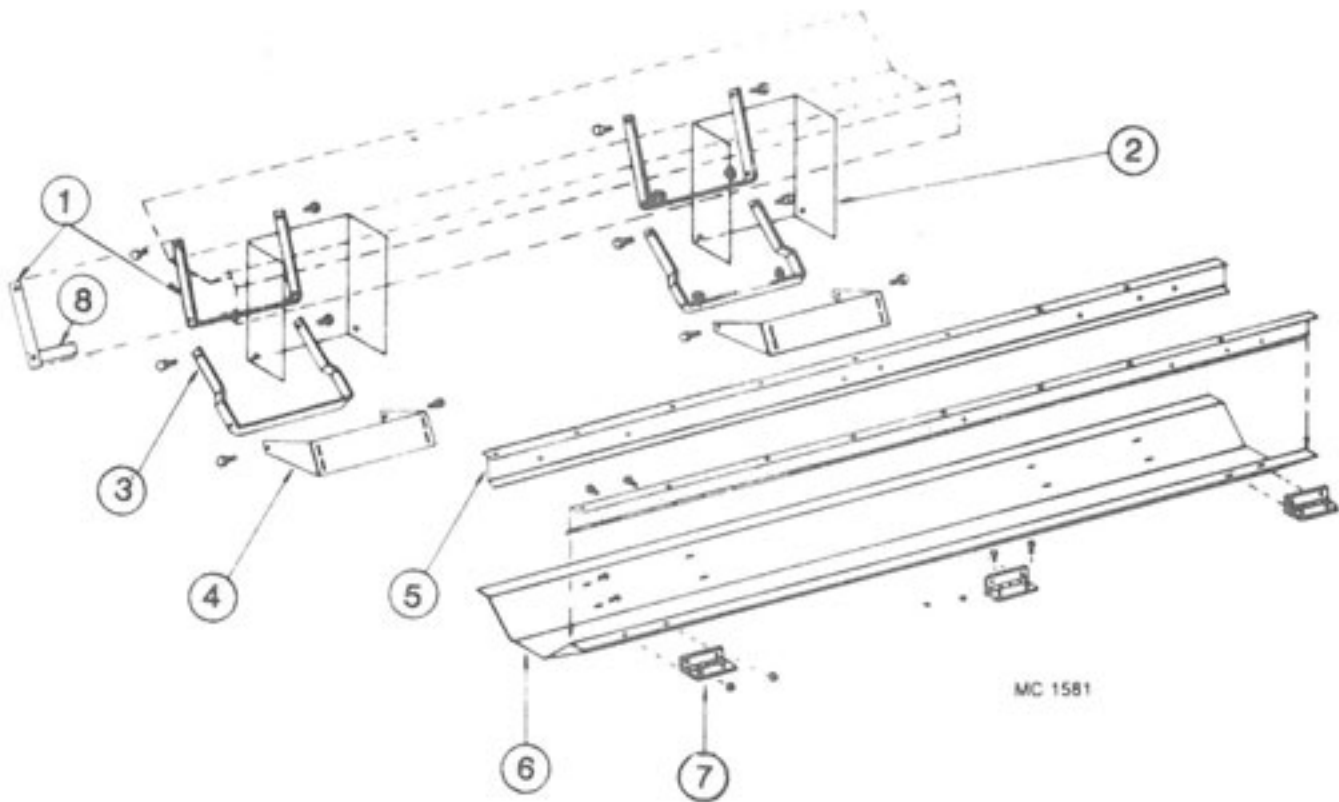


MC 1585

Metering Rolls and Unload Auger

Ref.	Part No.	Qty. (16')	Qty. (24')	Description
26	001 6011	1	1	1-7/16" Bore Billow Block Bearing
	001 8299	2	2	½-13 x 1 ¼" Capscrew-Grd. 8 w/Nylock
	001 8257	2	2	½" SAE Flatwasher
	000 8163	2	2	½-13 Hex Nut
27	128 3008	1	1	Front Seal Plate
	000 8184	4	4	8-18 x ½" Sheet Metal Screw
28	124 5610	1	1	Unload Auger Input Shaft
29	001 8168	4	6	½-13 x 4 ½" Capscrew - Grd. 5
	000 8180	4	6	½" Lockwasher
	000 8163	8	12	½-13 Hex Nut
30	128 0285	2	3	Unload Auger Support Weld
31	128 6020	2	3	Wood Bearing 1-5/16" (2 Halves)
32	128 0287	2	3	Unload Auger Bearing Bracket
	000 8137	4	6	½-13 x 1 ¼" Capscrew - Grd. 5
	000 8180	4	6	½" Lockwasher
	000 8163	4	6	½-13 Hex Nut
33	122 1007	2	3	Unload Auger Bearing Kit (Incl. Ref. 30 thru 33 in quantities required for one bearing)
34	128 3011	1	1	Stub Shaft Guard
35	128 4896	1	1	Shut Off Switch Cover
	001 8284	2	2	5/16-12 x ½" Self-Tapping Screw
36	128 2937	1	1	Switch Mount
37	120 6801	1	1	Switch Mount Clip
	000 8282	2	2	6-32 x ¼" Machine Screw
	000 8185	2	2	6-32 Flanged Locknut
38	120 6800	1	1	Shut Off Switch
39	128 0341	1	1	Grain Sampler
40	128 2842	1	1	Slide Gate Door - Sampler
41	128 2954	1	1	Base Panel Access Door w/Slot
42	128 2885	2	2	Access Door Bracket
43	128 2887	1	1	Access Door Slot Cover
44	128 0343	1	1	Discharge Ring 10"
45	128 0331	1	1	10" Front Unload Weldment (Optional Kit #127 9119)

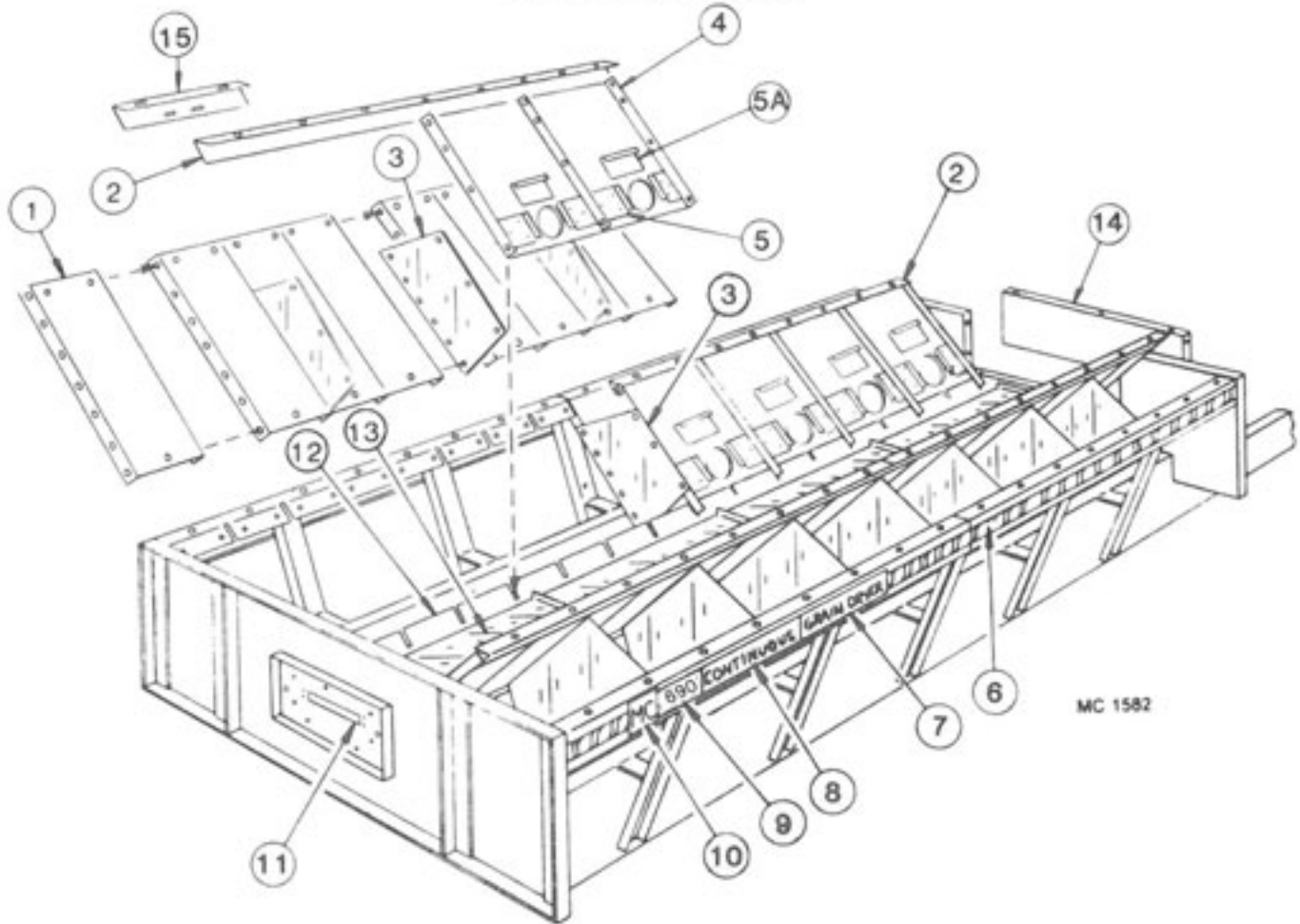
UNLOAD AUGER PANS



MC 1581

Ref.	Part No.	Qty.		Description
		(16')	(24')	
1	128 2029	4	6	Auger Dump Arm - Upper
2	128 8355	4	6	Warning Decal (not shown)
3	128 2030	4	6	Auger Dump Arm - Lower
4	128 2751	4	6	Bottom Link Pivot Base
5	128 2673	4	6	Pan Hinge Angle
6	128 2752	2	3	Auger Dump Pan
7	128 8957	6	9	Hinge
8	128 2032	4	6	Auger Dump Arm Handle

BASE SCREENS



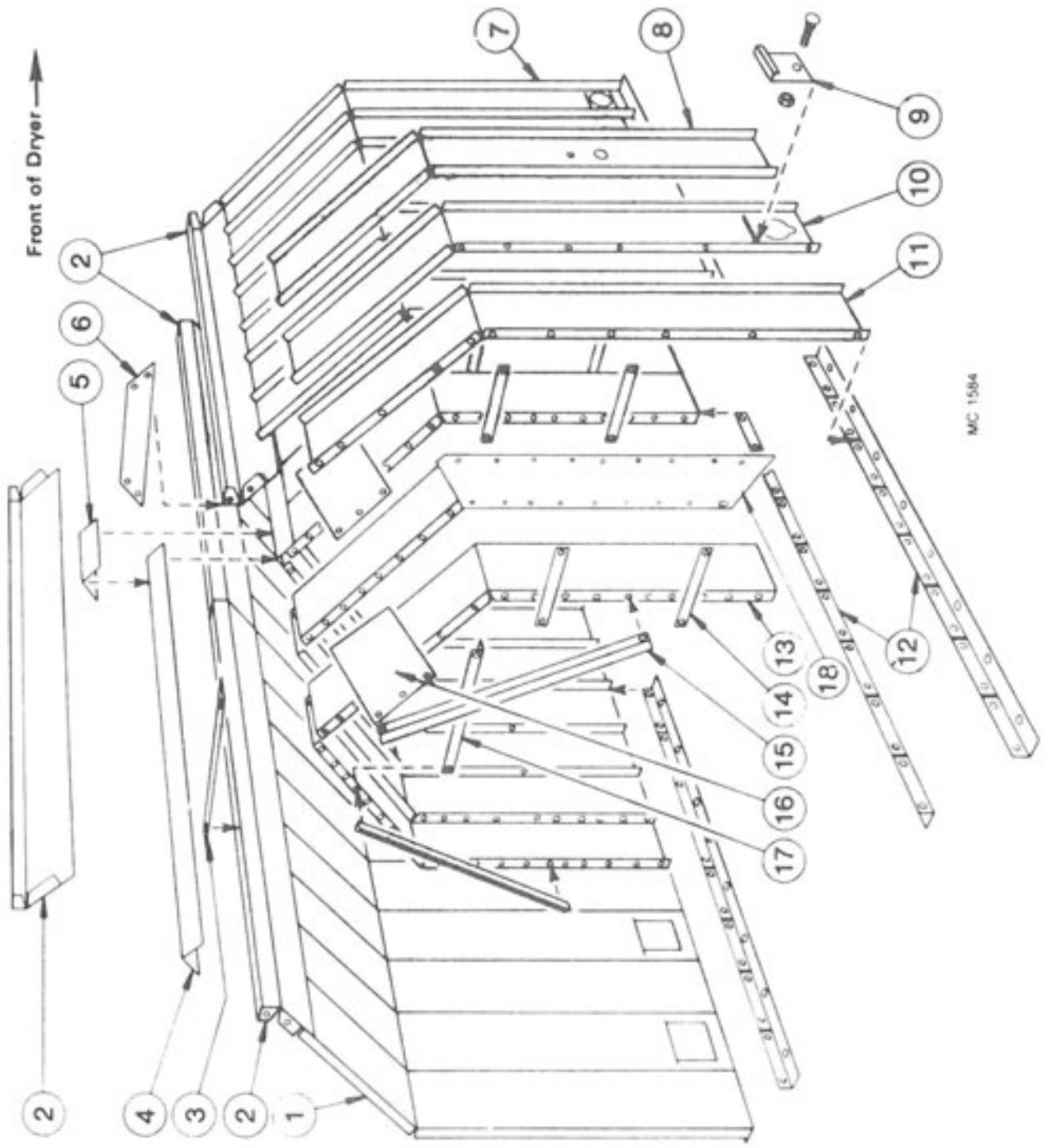
Ref. Part No.	(16')		Description	Ref. Part No.	(16')		Description
	Qty	Qty.			Qty	Qty.	
1	-	-	Lower Outer Screen	10	2	2	M-C Decal - 5" x 4-9/16"
	127 2945	32 48	Small Seed (Galv.)	11	128 2954	1 1	Base Panel Access Door w/Slot
2	128 2739	4 6	Lower Screen Mount Angle		001 8284	7 7	5/16-12 x 1/2" Self-Tapping Screw
3	128 2855	14 22	Lower Screen Stiffener	12	128 0225	4 6	Inner Screen Mount
4	-	-	Lower Inner Slope Screen w/Clean-Out (24" wide)		001 8202	12 18	5/16-18x 3/4" Hex Washer Head Bolt
	124 2000	16 24	Galvanized (Std.)		000 8169	12 18	5/16-18 Flanged Locknut
	124 2001	16 24	Small Seed (Galv.)	13	128 2890	4 6	Unload Auger Cover
5	124 2866	32 48	Slope Door Retainer		001 8111	8 12	5/16-18 Clip Nut
	000 8244	96 144	8-18 x 1/2" Hex Head Sheet Screw		001 8114	8 12	5/16-18x 3/4" Wing Screw
5A	128 3003	16 24	Slope Door (37" x 13 1/2")		000 8173	8 12	5/16" Flatwasher
6	128 8310	24' 39'	Red & Yellow Stripe Decal - 2 1/2"	14	128 4570	1 1	Base Filler Panel-37x13 1/2"
7	128 8309	2 2	"Grain Dryer" Decal		001 8209	12 12	3/8-16 x 1" Hex Washer Head Bolt Grd. 5
8	128 8308	2 2	"Continuous" Decal		000 8168	12 12	3/8-16 Flanged Locknut
9	128 8367	2 -	"690" Base Decal	15	120 3070	2 4	Seal Angle
	128 8362	- 2	"970" Base Decal				

Decal Kit - All Models - 128 9017

Kit contains all decals except dryer model decals. They must be ordered separately.

See ref. 9, page 7; ref. 10, page 10

UPPER SCREENS

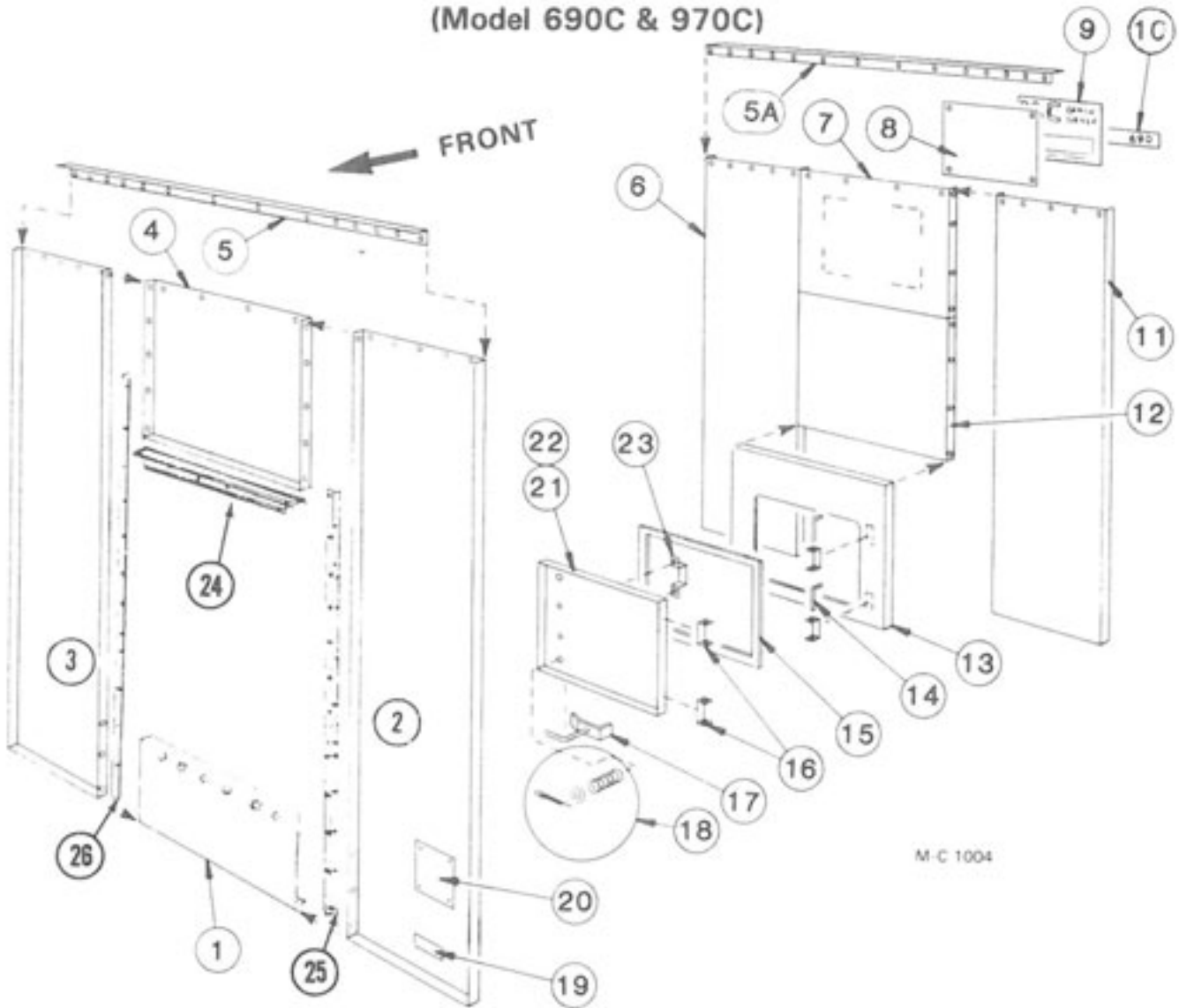


MC 1584

UPPER SCREENS

Ref.	Part No.	(16') (24')		Description
		Qty	Qty.	
1	----	-	-	Outer End Screen w/o Quick Drain
	021 2946	2	2	Galvanized (Std.)
	127 2967	2	2	Small Screen (Galv.)
	123 5213	2	2	Aluminum
2	129 2832	4	6	Hopper Joiner Angle
3	129 2947	2	3	Stiffener Strap
4	021 2950	2	3	Hopper Cap
5	128 3075	1	2	Seal Angle
6	129 2831	1	2	Joiner Plate
7	----	-	-	Outer End Screen w/Quick Drain
	128 3002	2	2	Galvanized (Std.)
	127 2963	2	2	Small Seed (Galv.)
	123 5210	2	2	Aluminum
8	----	-	-	Moisture Control Screen
	021 2947	1	1	Galvanized (Std.)
	127 2966	1	1	Small Seed (Galv.)
	123 5214	1	1	Aluminum
9	----	-	-	Quick Drain Door
	127 2950	16	24	Galvanized (Std.)
	127 2974	16	24	Small Seed (Galv.)
	001 8269	16	24	3/8-16 x 3/4" Carriage Bolt
	000 8168	16	24	3/8-16 Flanged Locknut
10	----	-	-	Outer Screen w/Quick Drain
	128 3001	14	22	Galvanized (Std.)
	127 2965	14	22	Small Screen (Galv.)
	123 5212	14	22	Aluminum
11	----	-	-	Outer Screen w/o Quick Drain
	021 2945	13	21	Galvanized (Std.)
	127 2964	13	21	Small Screen (Galv.)
	123 5211	13	21	Aluminum
12	125 2732	8	12	Screen Mount Angle
13	----	-	-	Inner Screen
	021 2949	32	48	Galvanized (Std.)
	127 2968	32	48	Small Seed (Galv.)
14	121 3007	60	92	Stiffener Strap
15	128 2663	14	22	Inner Brace
16	128 3072	14	22	Peak Screen Stiffener
17	021 2600	7	11	Inner Cross Tie
18	128 3076	2	4	Divider Panel

END PANELS (Model 690C & 970C)



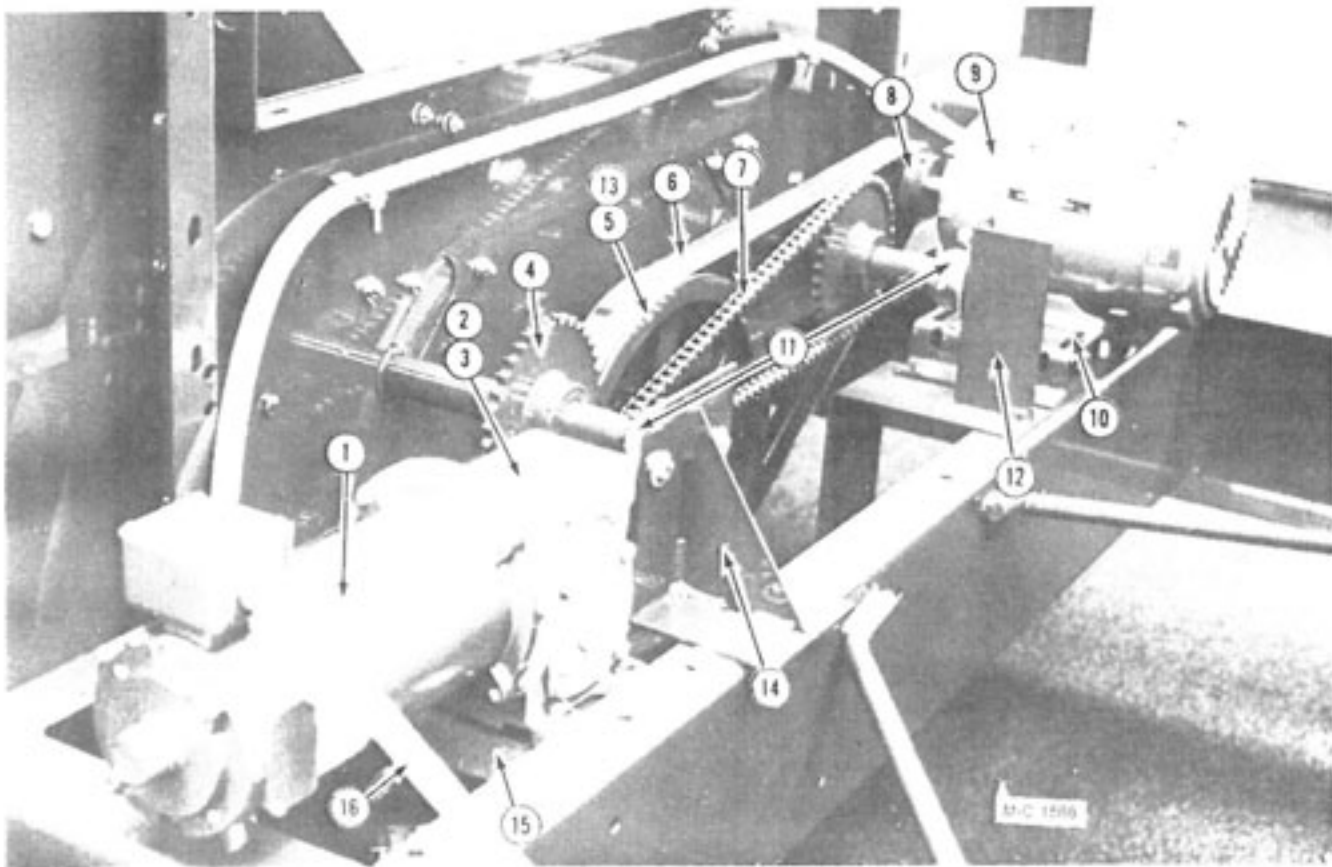
M-C 1004

Ref.	Part No.	Qty.	Description	Ref.	Part No.	Qty.	Description
1	126 2834	1	Panel Below Fan Housing	15	121 8966	-	Weather Stripping per foot
2	126 2831	1	Left Front Panel	16	128 2740	4	Door Hinge
3	126 2830	1	Right Front Panel		000 8212	8	1/4"-20 x 1/2" Truss Head Screw
4	126 2832	1	Panel Above Fan		000 8167	8	1/4" - 20 Flanged Locknut
5	128 2635	1	End Panel to Hopper Jn. Angle	17	121 0414	2	Latch and Handle
5A	021 2002	1	End Panel to Hooper Jn. Angle	18	001 8256	2	Spring - 3/8", ID x 2"
6	021 2832	1	Right Rear End Panel		000 8174	4	3/8" Flatwasher
7	128 2919	1	Panel Above Door (37"x 30")		000 8199	2	1/8" x 1" Cotter Pin
8	128 2999	1	Decal Mount Plate	19	121 8310	1	"Made in USA" - Decal
9	128 8331	1	Large Decal - See note	20	127 8300	1	"CGA" Dryer Plate (Canada only)
10	128 8368	1	690 Model Decal	21	128 1183	1	Rear Door Assembly (Incl. ref. 15 thru 18, 22, & 23)
	128 8360	1	970 Model Decal				
11	021 2833	1	Left Rear End Panel	22	128 2957	1	Rear Door Panel
12	128 2888	1	Filler Panel (37"x 33")	23	121 2887	1	Door Handle
13	128 2715	1	Door Frame	24	128 2644	1	Fan Housing Mount - Top
14	128 5201	2	Hinge Pin	25	128 2646	1	Fan Housing Mount - Left
				26	128 2645	1	Fan Housing Mount - Right

NOTE: This decal is imprinted "Model 975." Order ref. 10 to be placed over "Model 975."

This page intentionally blank.

SCR Drive Motor and Gear Box



Ref.	Part No.	Qty.	Description	Ref.	Part No.	Qty.	Description
1	124 6837	1	DC Motor - 1/3 HP	9	127 6860	-	230/460V 1.5HP 3Ø Motor
	122 8613	-	DC Motor Brush		121 6861	-	230/460V 2HP 3Ø Motor
2	124 6624	1	SCR Gear Box (Incl. 3/16" x 1" Key- 001 5110)		001 5112	1	Key - 3/16" x 1 1/8" (For 1 1/2 HP motor)
	128 8947	1	Pint of Mobil SHC 634 Oil		001 5114	1	Key-3/16" x 1 1/8" (For 2 HP motor)
	000 8123	4	3/8-16 x 1 1/4" Capscrew		128 1810	1	Motor To Cabinet Wire Ass'y
	000 8174	4	3/8" Flatwasher		000 8110	1	5/16-18 x 1 1/2" Capscrew
	000 8168	4	3/8" Flanged Locknut		000 8108	3	5/16-18 x 1" Capscrew
3	128 6422	1	SCR Gear Box Sprocket (not shown) RC-40 12T, 1/2" Bore		000 8173	8	5/16" Flatwasher
4	128 6423	2	Sprocket-RC40-36T-1 1/4" Bore		000 8169	4	5/16-18 Flanged Locknut
	000 8298	2	Woodruff Key - 1/4" x 1/2"	10	124 4214	1	Unload Auger Motor Mt.
5	021 6201	1	Pulley-2B x 13.6 SK		000 8121	4	3/8-16 x 1" Capscrew
	001 5130	1	Key - 1/8" x 1"		001 8132	1	1/8-16 x 4" "J" Bolt
6	021 6100	1	B-65 Belts (Matched set of 2)		000 8174	5	3/8" Flatwasher
7	128 6315	1	Chain - RC-40 x 130 Pitch		000 8168	5	3/8-16 Flanged Locknut
	002 6309	-	Connecting Link	11	121 6022	2	1 1/4" Outboard Brg.
8	121 6210	1	Pulley - 2B - 3-3/16"OD - 3/8" Bore		000 8121	4	3/8-16 x 1" Capscrew
	121 6203	1	Pulley-2B - 3-3/16"OD - 3/8" Bore		000 8174	4	3/8" Flatwasher
					000 8168	4	3/8-16 Flanged Locknut
				12	128 0257	1	Gear Mt. Motor Weld.
					000 8119	4	3/8-16 x 3/4" Capscrew
					000 8174	4	3/8" Flatwasher
					000 8168	4	3/8-16 Flanged Locknut

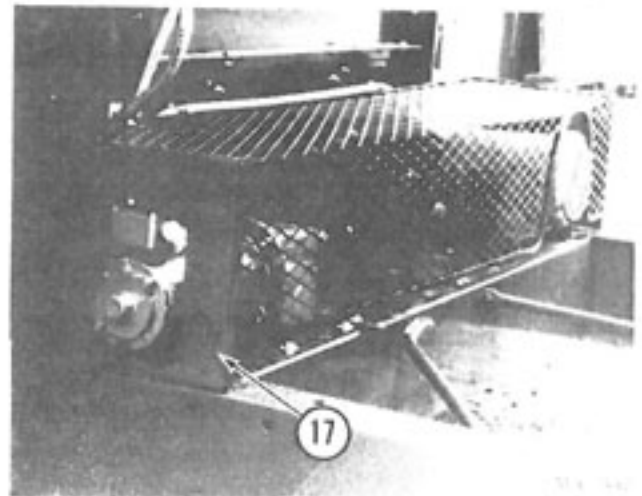
Continued on next page

SCR DRIVE MOTOR AND GEAR BOX

Ref.	Part No.	Qty.	Description
13	001 6202	1	SK Bushing - 1-7/16" Bore (Incl. capscrews)
14	128 0191	1	Outboard Bearing Mount
15	124 4456	1	Gear Box Mount
	000 8119	4	3/8-16 x 3/4" Capscrew
	000 8174	4	3/8" Flatwasher
	000 8168	4	3/8-16 Flanged Locknut
16	128 1999	1	SCR Motor to Cabinet Flexible Conduit (40")
17	128 0268	1	Drive Guard
	128 8951	2	Rubber Strap w/Hook
	001 3302	2	Angle Clip
	000 8121	4	3/8-16 x 1" Capscrew
	000 8174	6	3/8" Flatwasher
	001 8149	4	3/8-16 Two-Way Locknut

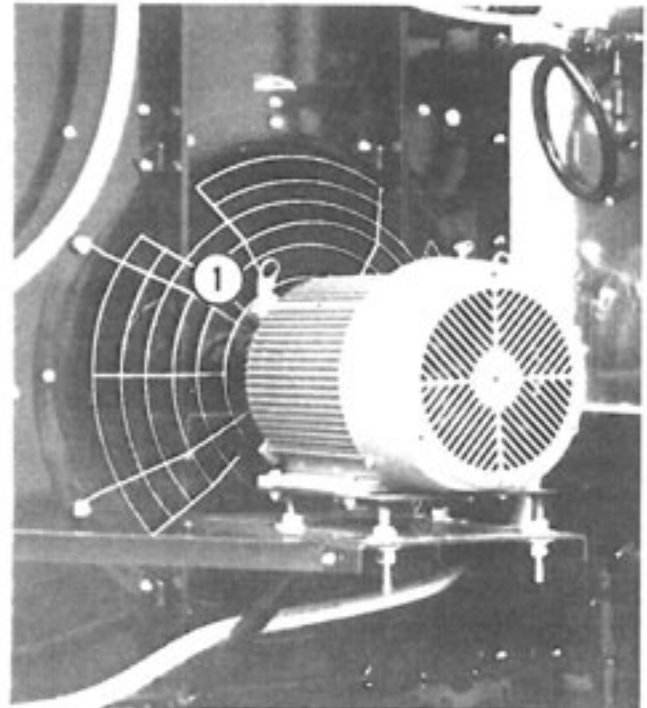
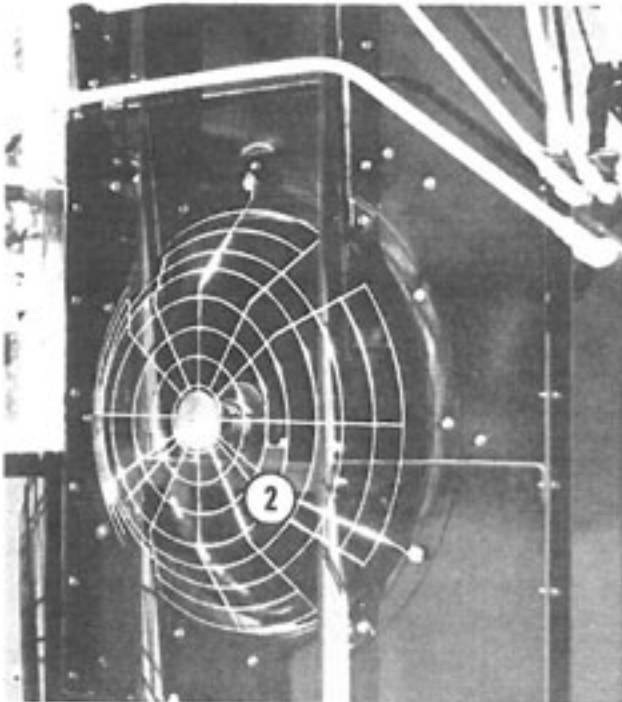
Not Shown:

18	000 8301	2	Safety Shield Warning Decal
-	120 6914	2	Chase Nipple - 1/2"
-	121 6906	2	Pipe Clamp



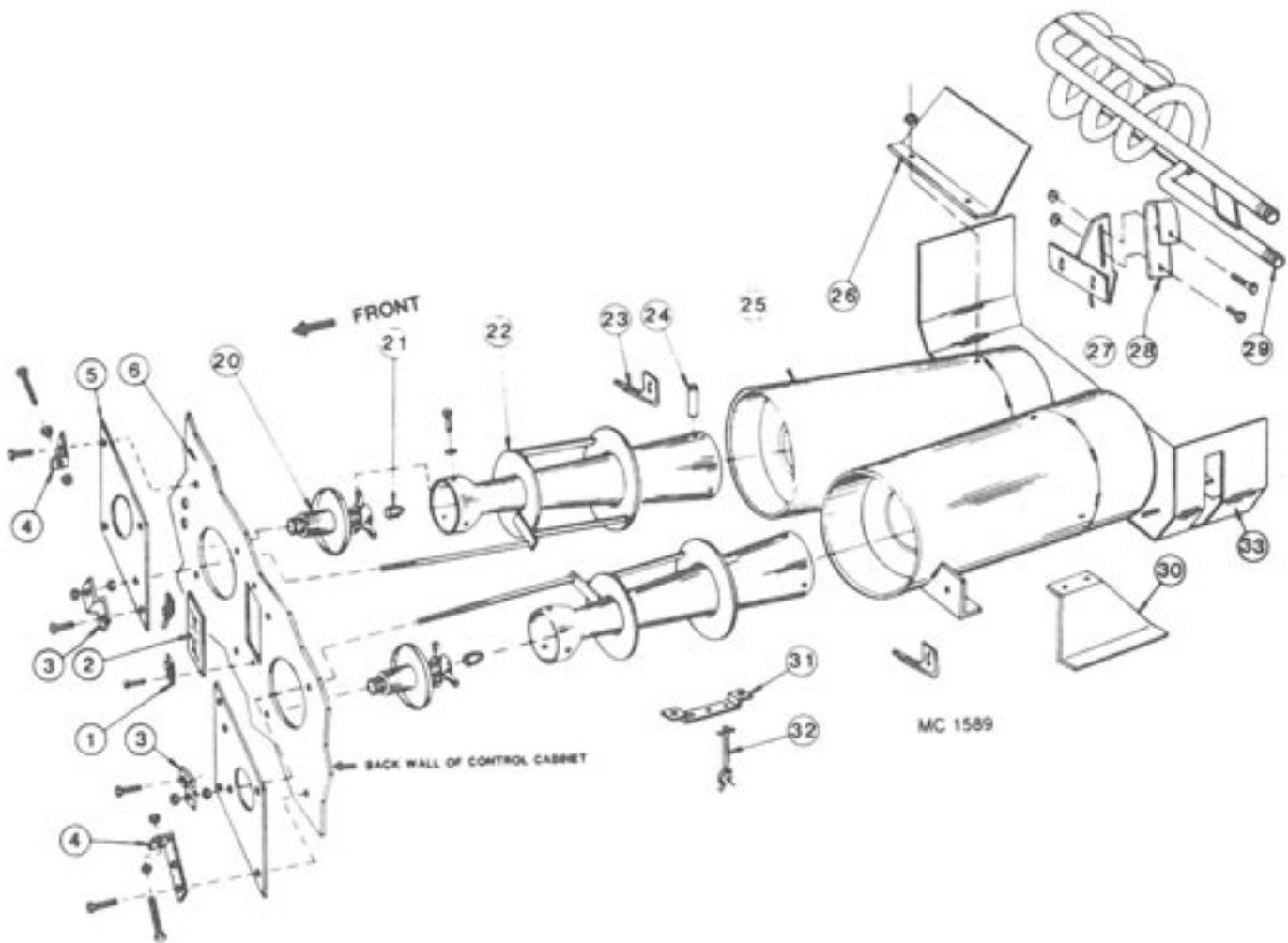
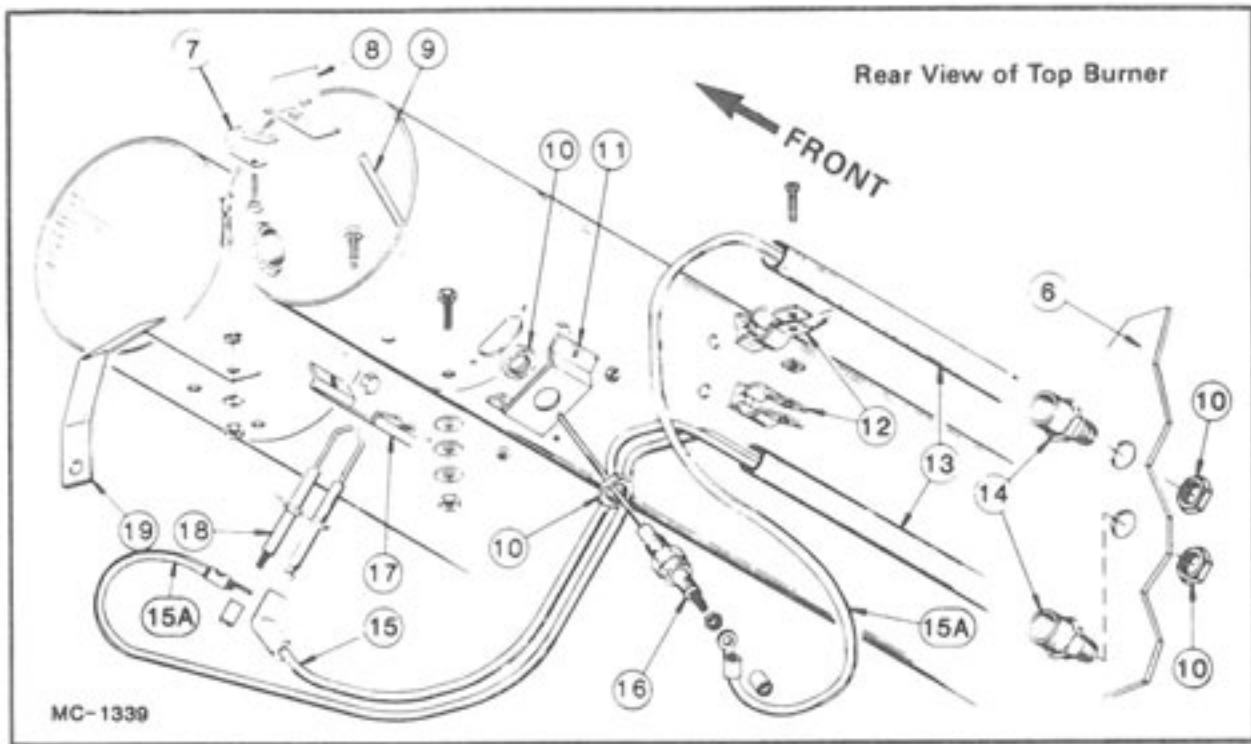
Ref.	Part No.	Qty.	Description
	000 8212	2	1/4-20 x 1/2" Truss Hd. Screw
	000 8167	2	1/4-20 Flanged Locknut

Fan Guards



Ref.	Part No.	Qty.	Description
1	128 8965	1	3/4 Fan Guard
2	128 8964	1	Full Fan Guard Wire

VENTURI BURNER



VENTURI BURNER

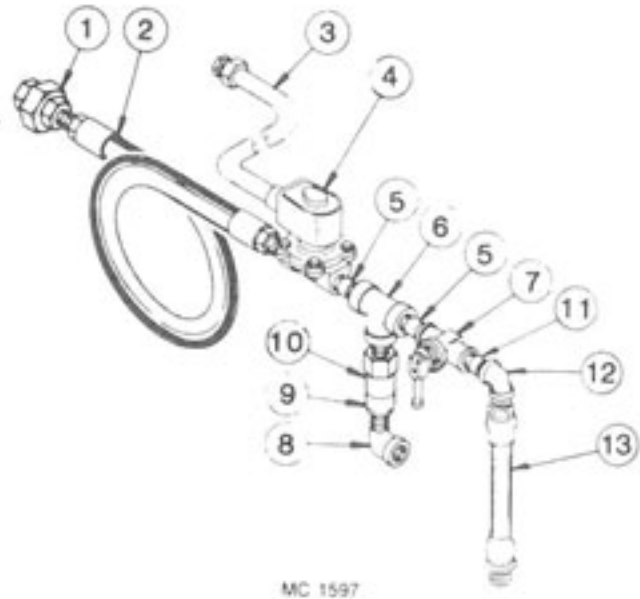
NOTE: Quantities shown are for one burner assembly.

Ref.	Part No.	Qty.	Description
1	128 8969	2	Burner Window Holder Clip
2	128 8968	1	Burner Window
3	128 4515	2	Air Adjuster Bracket
4	128 3371	2	Air Adjuster Clamp Bracket Short (2-15/16")
	128 2008	2	Air Adjuster Clamp Bracket Long (3-9/16")
5	128 4488	2	Hand Hole Cover Plate
6	----	-	Back Wall of Control Cabinet
7	127 5201	1	Eddy Mounting Strip
8	127 5200	1	Natural Gas Eddy
9	128 0197	1	Flame Ground Rod
10	121 6915	4	Locknut - 1/2"
11	128 3007	1	Flame Sensing Probe Bracket
12	121 6906	2	Pipe Clamp
13	128 5742	2	Igniter Line Support Tube
14	128 8061	2	PVC Male Adapter - 1/2"
15	122 9003	1	Ignition Wire
15A	124 1079	2	Low Voltage Wire Assembly
16	124 6872	1	Flame Sensing Probe
17	128 2962	1	Electrode Mounting Bracket
18	128 6995	1	Style 2 Electrode
19	121 3007	1	Ground Strap
20	128 0108	2	Inlet Throttle
21	127 5700	2	Burner Nozzle (Natural Gas - 3/8" Orifice)
	128 5715	2	Burner Nozzle (LP Gas - 1/4" Orifice)
22	128 0112	2	Venturi Burner
23	128 4260	2	Burner Mounting Strap
24	128 5401	6	Venturi Spacer
25	128 0137	1	Venturi Extension
26	----	-	Burner Deflector
	128 5310	1	17 3/4" (For 10HP fan assembly)
	127 5300	1	15 1/4" (For 15HP fan assembly)
	128 5308	1	12 3/4" (For 20HP fan assembly)
27	128 0141	1	Vaporizer Coil Anchor (LP Gas)
28	128 5306	1	Vaporizer Coil Anchor Clip (LP Gas)
29	128 0140	1	Vaporizer Coil (LP Gas)
30	128 4523	1	Burner Front Support - Right
	128 4524	1	Burner Front Support - Left
31	128 4941	1	Wire Support Bracket
32	128 6989	3	Stand-Off Clip
33	128 5313	1	Burner Shroud

LP Gas Liquid Lines

Liquid Control Line

Ref.	Part No.	Description
1	121 8022	½" Extra Heavy Union
2	128 8400	½" ID x 34" Hose w/Couplings
3	128 1820	¾" Flexible Conduit
4	125 7082	½" Solenoid Valve
5	121 8094	½" x ½" Extra Heavy Nipple
6	120 8035	½" Extra Heavy Tee
7	121 7015	Hand Valve - ½"
8	121 8048	½" - 90° Standard Street Elbow
9	121 7014	Relief Valve Adapter
10	121 7013	Relief Valve
11	128 8048	½" x 2½" Extra Heavy Nipple
12	121 8036	½" - 90° Extra Heavy Elbow
13	121 7005	Intake Hose Liquid Propane
14	121 7021	Excess Flow Valve for LP Storage Tank (not shown)

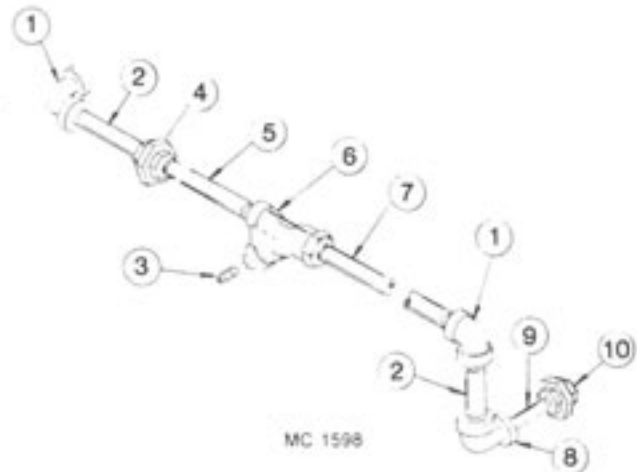


Solenoid Valve Repair Kit

The repair kit and coil for the ½" solenoid valve (ref. 4) is shown on page 19.

Vaporizer to Manifold Pipe

Ref.	Part No.	Description
1	121 8027	¾" - 90° Extra Heavy Elbow
2	121 8006	¾" x 2" Extra Heavy Nipple
3	001 8001	¾" Pipe Plug
4	121 8072	¾" Extra Heavy Union
5	125 8058	¾" x 2½" Extra Heavy Nipple
6	121 8060	¾" Strainer
7	128 5426	¾" x 30½" Extra Heavy Nipple
8	121 8032	¾" to ½" - 90° Extra Heavy Elbow
9	121 8094	½" x 1½" Extra Heavy Nipple
10	121 8022	½" Extra Heavy Union



LP and Natural Gas Manifolds

REPAIR KITS AND PARTS FOR MODULATING VALVES, SOLENOID VALVES AND LP GAS PRESSURE REGULATORS

For Modulating Valves 123 7002 & 123 7024

122 9993 Seat Kit (Incl. stem, disc holder & diaphragm)
122 7006 Diaphragm

For 1 1/4" Solenoid Valve 128 7001

122 7034 Repair Kit (See note)
--- 4607 Coil

For 1/2" Solenoid Valve 125 7082

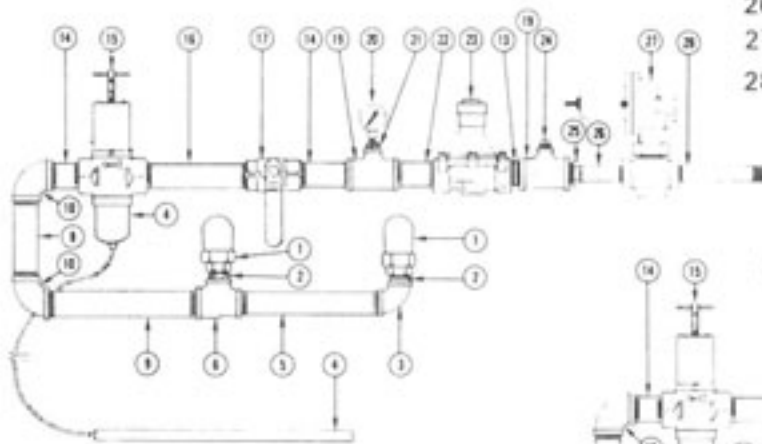
122 7039 Repair Kit (See note)
122 7001 Coil

NOTE: Kit includes all internal parts that would require replacement in normal service and installation instructions.

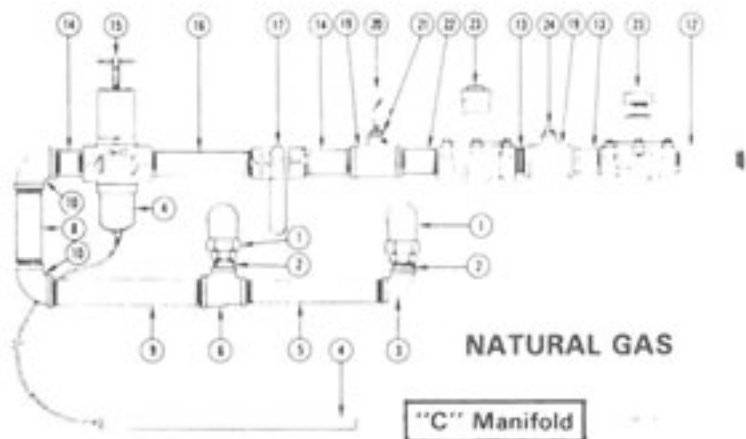
For LP Gas Pressure Regulator 128 7005

122 7043 - Diaphragm (Nitrile)
122 7044 - Disc Assembly
122 7045 - Control Spring (Yellow)
122 7046 - Stabilizer
122 7047 - Diaphragm Case O Ring

Ref.	Part No.	Description
1	128 8029	1" Std. Union Elbow-90°
2	128 8013	1" Std. Close Nipple
3	128 8016	1" Std. Elbow - 90°
4	122 7023	Power Element 90°-210°F (15' Capillary) Code "B"
		Optional
	122 7036	Power Element 140°-250°F (15' Capillary) Code "D"
		Standard
5	128 8058	1" x 10 1/2" Std. Nipple
6	128 8007	1 1/4" x 1" x 1" Std. Tee
7	127 8016	1 1/4" x 5 1/2" Std. Nipple
8	123 8046	1 1/4" x 7 1/2" Std. Nipple
9	128 8065	1 1/4" x 11" Std. Nipple
10	123 8051	1 1/4" Std. Elbow - 90°
11	127 8021	1 1/4" x 9 1/2" Std. Nipple
12	123 8073	1 1/4" x 6 1/2" Std. Nipple
13	123 8069	1 1/4" Std. Close Nipple
14	123 8045	1 1/4" x 2 1/2" Std. Nipple
15	123 7024	1 1/4" Modulating Valve w/ 140°- 250°F Power Element
16	129 8033	1 1/4" x 8 1/2" Std. Nipple
17	123 7003	1 1/4" Main Hand Valve
18	128 8024	1 1/4" x 5 Std. Nipple
19	127 8131	1 1/4" x 1 1/4" x 3/8" Std. Tee
20	120 7002	Pressure Gauge
21	127 8132	3/8" to 1/4" Reducing Bushing
22	128 8003	1 1/4" x 3 1/2" Std. Nipple
23	128 7001	1 1/4" Solenoid Valve
24	001 8001	3/8" Pipe Plug
25	123 8078	1 1/4" x 3/4" Std. Reducing Bushing
26	121 8069	3/4" x 3" Std. Nipple
27	128 7005	LP Gas Pressure Reg.
28	121 8091	3/4" X 7" Extra Hvy. Duty Nipple



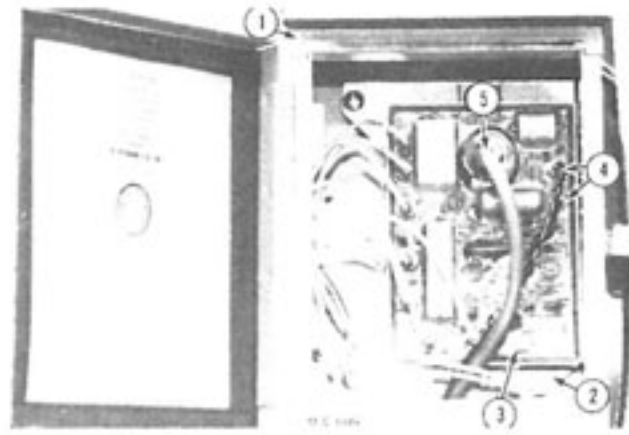
LIQUID PROPANE



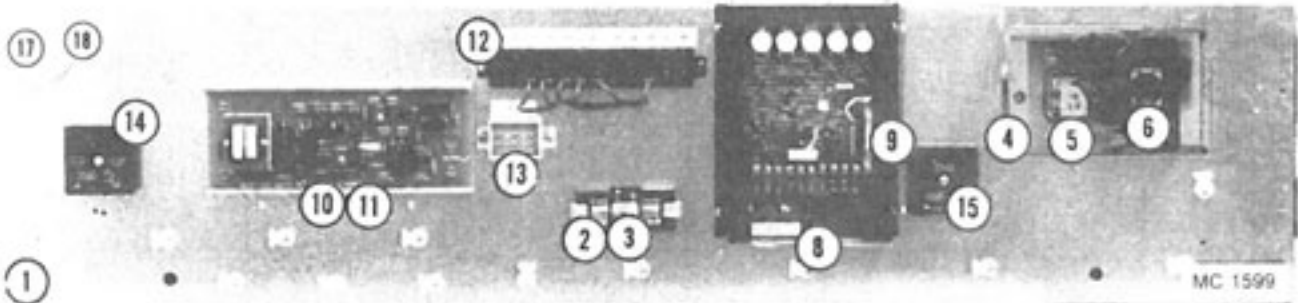
NATURAL GAS

IGNITION BOARD AND BOX

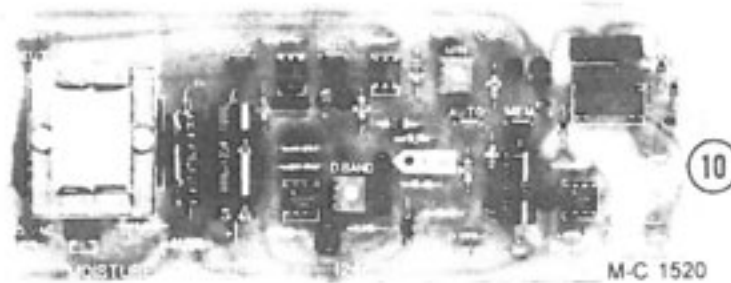
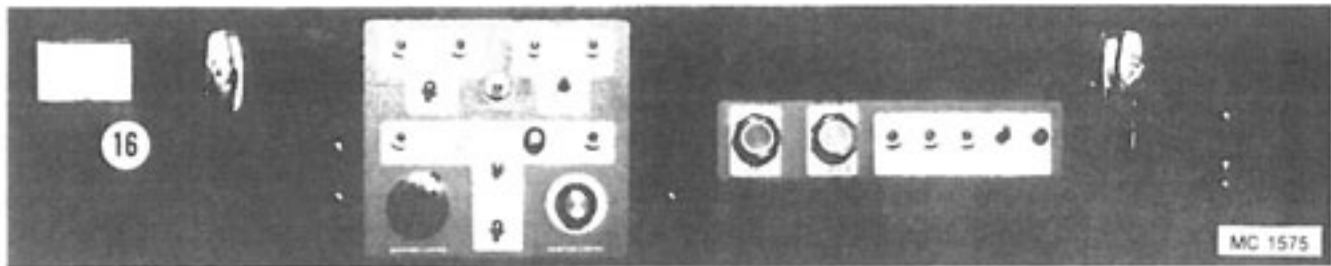
Ref.	Part No.	Qty.	Description
1	128 5995	1	Ignition Box
2	128 2938	1	Ignition Board Mt. Plate
3	121 6925	1	115V Ignition Board
4	124 1079	2	Low Voltage Wire Kit
5	122 9003	1	High Voltage Wire Kit



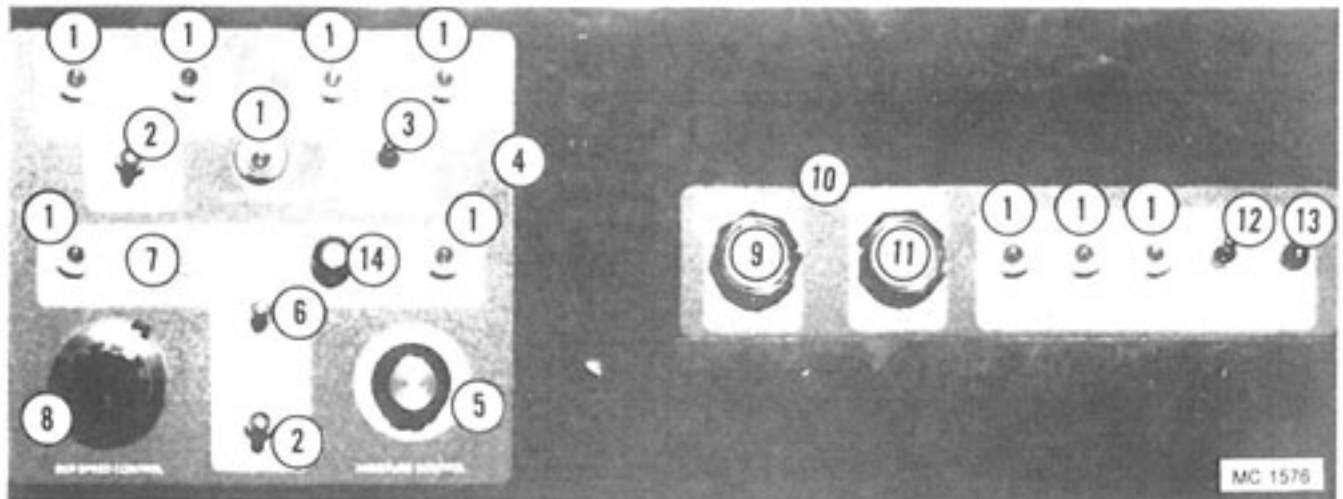
Electrical Components In 115V Control Cabinet



Ref.	Part No.	Description	Ref.	Part No.	Description
1	124 4806	Component Mounting Board	10	124 6957	Moisture-Matic
2	128 6851	Fuse Holder	11	128 5916	Snap Track 8 1/2"
3	128 6967	10 Amp Fuse (NON-10)	12	124 6928	Terminal Block 12-Position
4	124 6972	Relay and Timer Socket Board starting with S/N 55242	13	124 6929	Terminal Block 3-Position
5	021 6809	Relay	14	124 6890	.1 to 8 Minute Adjustable Level Auger Timer
6	124 6978	60 Minute Adjustable Timer starting with S/N 55242	15	124 6831	10 Second Ignition Timer
8	124 6874	SCR Board (Dart)	16	124 6981	Discharge Meter
9	121 6805	10 Amp. - GLH Fuse	17	124 6842	50 Watt Rough Service Bulb (not shown)
			18	124 6841	Light Bulb Socket

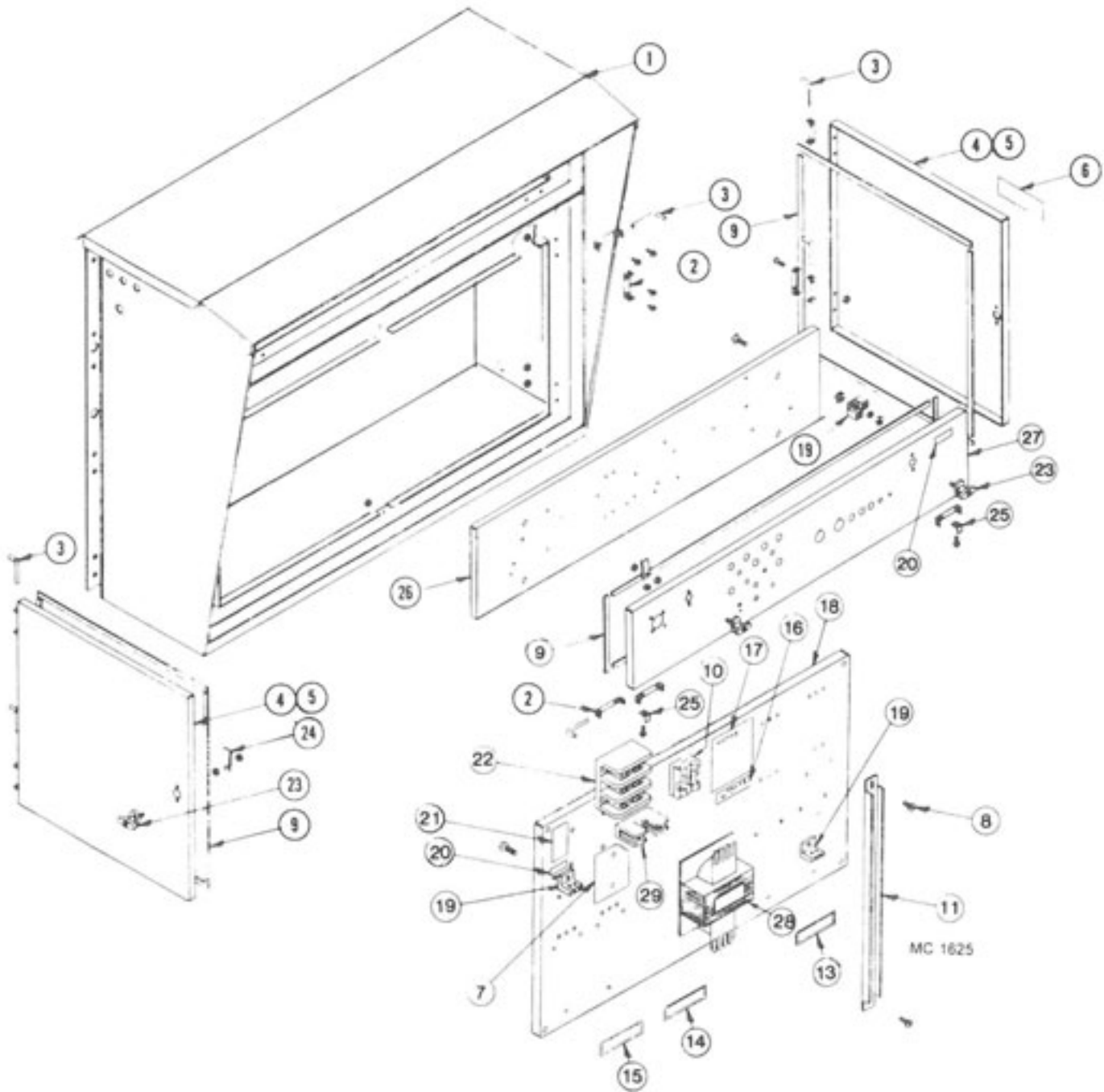


Control Panel Lights, Switches and Controls



Ref.	Part No.	Description
1	121 6808	125V Indicator Lamp Ass'y. (Incl. lamp & lens)
	122 6810	125V Indicator Lamp
	122 6800	Indicator Lamp Lens (Clear)
2	120 6827	OFF-ON-ON Momentary Contact Toggle Switch
3	121 6807	ON-Off-ON Toggle Switch DPDT
4	128 8365	115V Control Bezel
5	124 6939	Moisture Control Potentiometer w/ Wires
	124 6941	Knob
6	121 6807	ON-OFF-ON Toggle Switch DPDT
7	124 6848	8 Amp. Circuit Breaker (SCR Drive)
8	124 1089	SCR Drive Potentiometer (10 turn w/ wire)
	124 6892	Multi-Dial
9	128 6845	Stop Button - Red
10	128 8358	Fan Control Bezel
11	128 6844	Start Button - Green
12	121 6815	ON-OFF Toggle Switch (SPST)
13	122 6814	Ignition Reset (0.1 Amp.)
14	124 6938	Fuse Holder
	124 6937	1 Amp. Fuse Slo-Blow

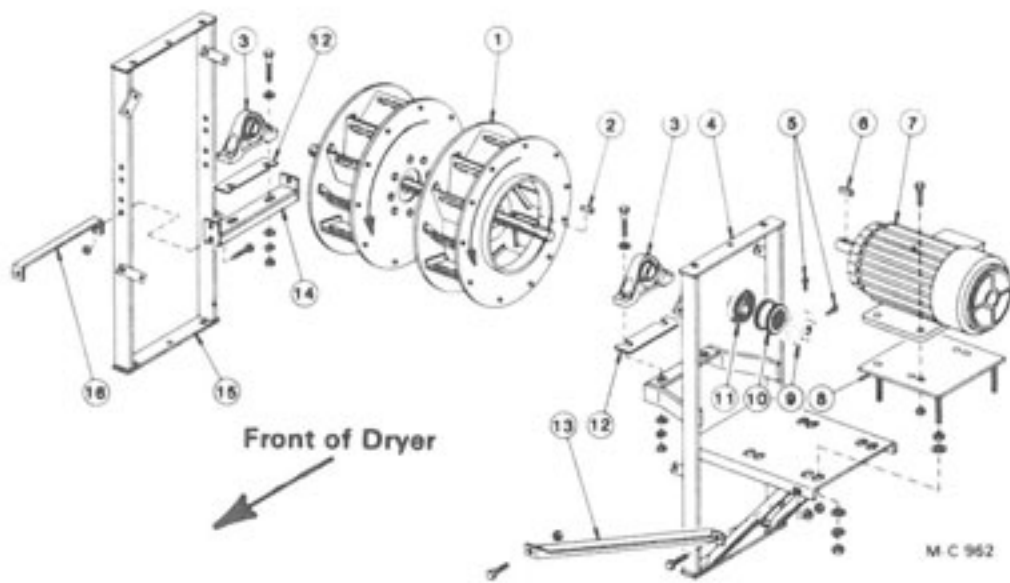
Motor Control Cabinet



Motor Control Cabinet

Ref.	Part No.	Qty.	Description
1	128 0306	1	Motor Control Cabinet Weldment
2	128 2740	12	Door Hinge
3	128 5201	6	Hinge Pin
4	128 1329	2	Door Assembly - Left & Right (include Ref. 2, 5 & 9)
5	128 4844	2	Door - Left & Right
6	121 8316	1	Dryer Warning Decal
7	128 5789	2	Insulator Sheet (460 - 575V)
8	000 8103	2	5/16-18 x 1/2" Truss Head Screw
	000 8169	2	5/16-18 Flanged Locknut
9	121 8966	-	Weather Stripping 1/4" x 3/4" (specify feet required)
10	121 6988	2	Fuse Holder - 460 & 575V
	203 6801	1	Double Fuse Block - 200/208V
11	128 4843	1	Door Jamb
13	121 8313	1	Heat Fan Decal
14	128 8335	1	Unload Auger Decal
15	121 8351	1	Level Auger Decal
16	123 8339	1	208 Volts Decal
	123 8336	1	230 Volts Decal
	123 8337	1	460 Volts Decal
	123 8338	1	575 Volts Decal
17	121 8315	1	Notice, Warranty Decal
18	124 4448	1	Component Mounting Panel
19	125 6918	2	Grounding Lug
20	128 8349	2	Ground Decal
21	128 8318	1	Splitter Block Voltage Decal
22	128 6957	1	Splitter Block - 1 & 3 Phase
23	124 1021	4	Door "T" Handle Assembly (incl. Ref. 24 cam, keys and mounting hardware). Lever type handle no longer available.
	128 8946	4	Door "T" Handle w/Keys (less Ref. 24 cam)
	122 8900	4	Door "T" Handle Key
24	128 3425	4	Door Latch Cam
25	128 2741	2	Stop Bracket
26	124 4806	1	Component Mounting Board
27	124 4842	1	Control Door 1-Burner
	124 1021	2	Door "T" Handle Assembly
28	127 6829	1	Transformer (750VA)
29	127 6823	1	Neutral Lug
30	124 2855	1	Hour Meter Bracket (not shown)*
31	444 645	1	Hour Meter (not shown)
32	124 6980	1	Grounding Rod w/124 6970 9/16" dia. x 8 ft. (14.3mm. x 2.4m.) Ring (not shown)

Fans and Fan Drive



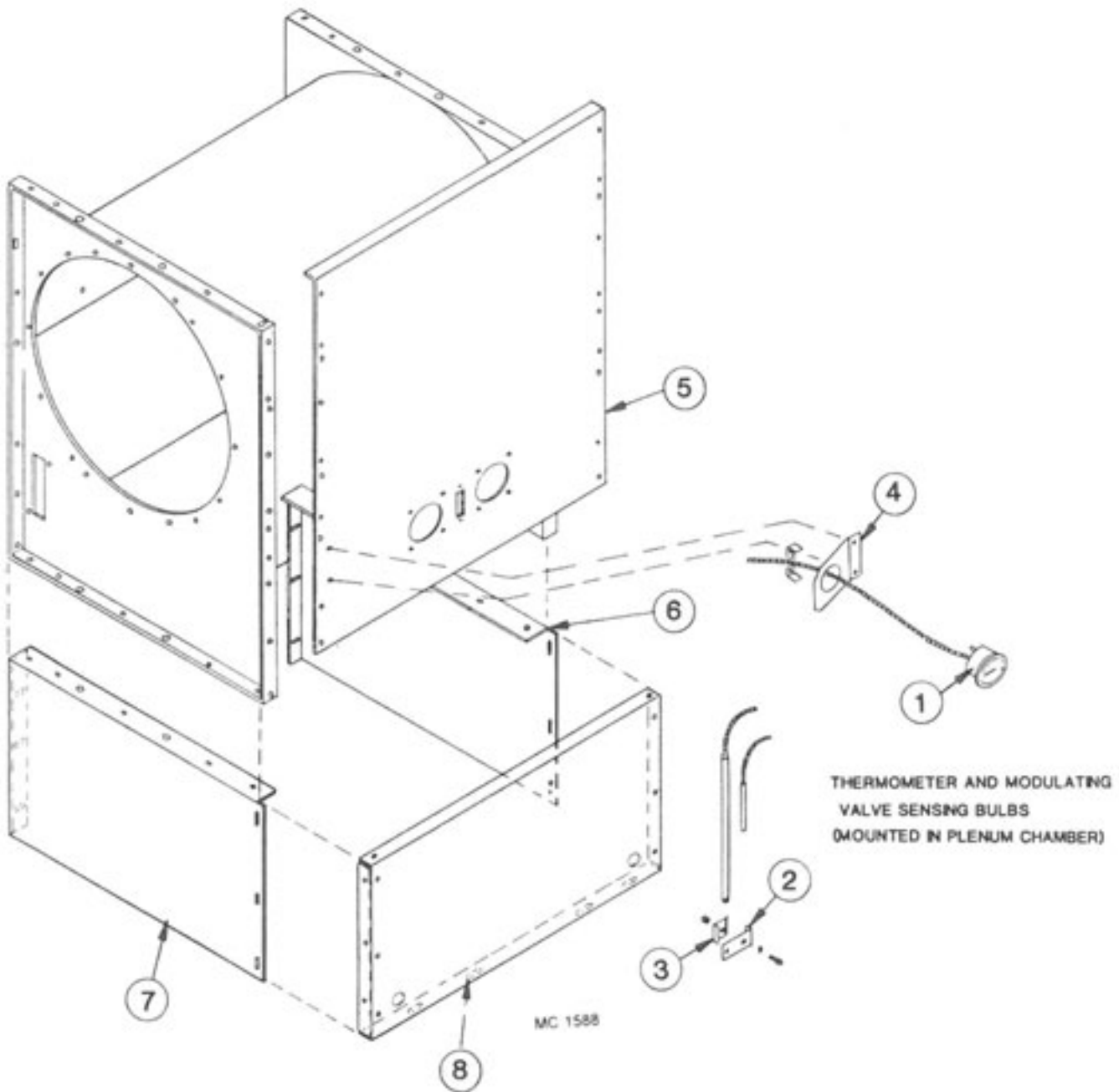
Ref. Part No.	Qty.	Description	Ref. Part No.	Qty.	Description
1	---	Fan Ass'y - EM Models	9	128 6604	1 8-S Flange - 1 $\frac{1}{8}$ " Bore (20HP Motor)
	128 1266	1 20HP (Two 10HP fan wheels)		128 6613	1 9-S Flange - 1 $\frac{1}{8}$ " Bore (30HP Motor)
	128 1315	1 30HP (Two 15HP fan wheels)	10	128 6606	1 Sleeve - Sureflex 8JE (20HP Motor)
2	001 5150	1 Key - $\frac{1}{2}$ " x $\frac{3}{8}$ " x 2" (20HP)		128 6609	1 Sleeve - Sureflex (30HP Motor)
	001 5147	1 Key - $\frac{1}{2}$ " x $\frac{1}{2}$ " x 3" (30HP)	11	128 6622	1 8-S Flange - 2- $\frac{3}{16}$ " Bore (20HP Motor)
3	128 6022	2 Pillow Block Bearing 2- $\frac{3}{16}$ " Bore		128 6609	1 9-S Flange - 2- $\frac{3}{16}$ " (30HP Motor)
	000 8268	4 $\frac{5}{8}$ -11 x 3" Capscrew-Grd.5	12	128 2849	AR Bearing Shim - 16 gauge
	000 8299	8 $\frac{5}{8}$ " SAE Flatwasher		128 2649	AR Bearing Shim - 11 gauge
	000 8181	4 $\frac{5}{8}$ " Lockwasher	13	124 4213	1 Motor Mount Brace
	000 8164	4 $\frac{5}{8}$ -11 Hex Nut		001 8213	2 5/16-18 x 1" Capscrew
4	128 0138	1 Motor Support		000 8169	2 5/16-18 Flanged Locknut
	001 8213	8 5/16-18 x 1" Capscrew	14	128 0098	1 Bearing Support
	000 8169	8 5/16-18 Flanged Locknut		000 8138	3 $\frac{1}{2}$ -13 x 1 $\frac{1}{2}$ " Capscrew
5	128 8130	2 $\frac{3}{8}$ -16 x 1" Sq. Hd. Cup Pt. Set Screw		000 8139	1 $\frac{1}{2}$ -13 x 1 $\frac{1}{4}$ " Capscrew
6	001 5139	1 Key - $\frac{3}{8}$ " x $\frac{3}{8}$ " x 3" (20HP)		000 8170	4 $\frac{1}{2}$ -13 Flanged Locknut
	001 5147	1 Key - $\frac{1}{2}$ " x $\frac{1}{2}$ " x 3" (30HP)	15	128 0091	1 Fan Bearing Support
7	125 6934	1 230/460V 20HP 3Ø Motor		001 8213	8 5/16-18 x 1" Capscrew
	128 6986	1 230/460V 30HP 3Ø Motor		000 8169	8 5/16-18 Flanged Locknut
	000 8139	4 $\frac{1}{2}$ -13 x 1 $\frac{1}{4}$ " Capscrew (20HP & 30HP Motor)		000 8135	4 $\frac{1}{2}$ -13 x 1" Capscrew-Grd.5
	000 8170	4 $\frac{1}{2}$ -13 Flanged Locknut		000 8170	4 $\frac{1}{2}$ -13 Flanged Locknut
8	121 0343	1 Motor Mount (20HP Motor)	16	128 3452	1 Bearing Mt. Stiffener
	128 0090	1 Motor Mount (30HP Motor)		001 8213	1 5/16-18 x 1" Capscrew
	000 8165	8 $\frac{3}{4}$ -10 Hex Nut		000 8169	1 5/16-18 Flanged Locknut
	000 8177	8 $\frac{3}{4}$ " Flatwasher		000 8139	1 $\frac{1}{2}$ -13 x 1 $\frac{1}{4}$ " Capscrew
	000 8182	4 $\frac{3}{4}$ " Lockwasher		000 8170	1 $\frac{1}{2}$ -13 Flanged Locknut

NOTE: Fan assembly HP can be determined by measuring the width of the fan wheels.

A. 5 $\frac{1}{4}$ " fan wheels - 10HP (Two fan wheels - 20HP)

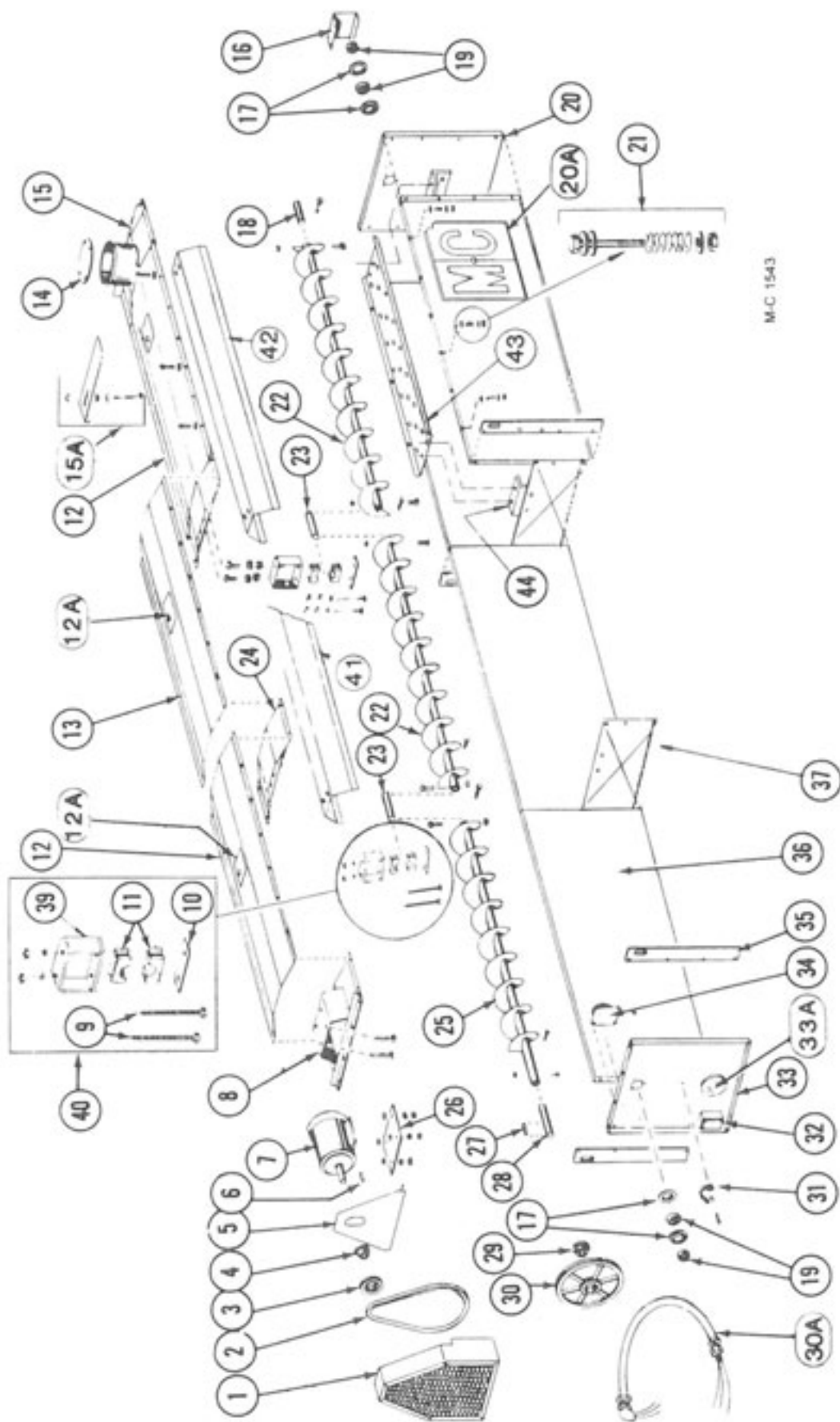
B. 7-15/16" fan wheels - 15HP (Two fan wheels - 30HP)

Fan Housing



Ref.	Part No.	Qty.	Description
1	128 8983	-	Thermometer - 15' Capillary (Mounting Bracket included)
2	121 2883	1	Thermometer Sensing Bulb Bracket
3	121 2882	1	Thermometer Sensing Bulb Clip
4	124 4824	1	Thermometer Mount Plate (Single)
5	128 0302	1	Front Panel
6	124 4460	1	Fan Housing Support - Right
7	124 4459	1	Fan Housing Support - Left
8	124 4464	1	Fan Housing Support Panel

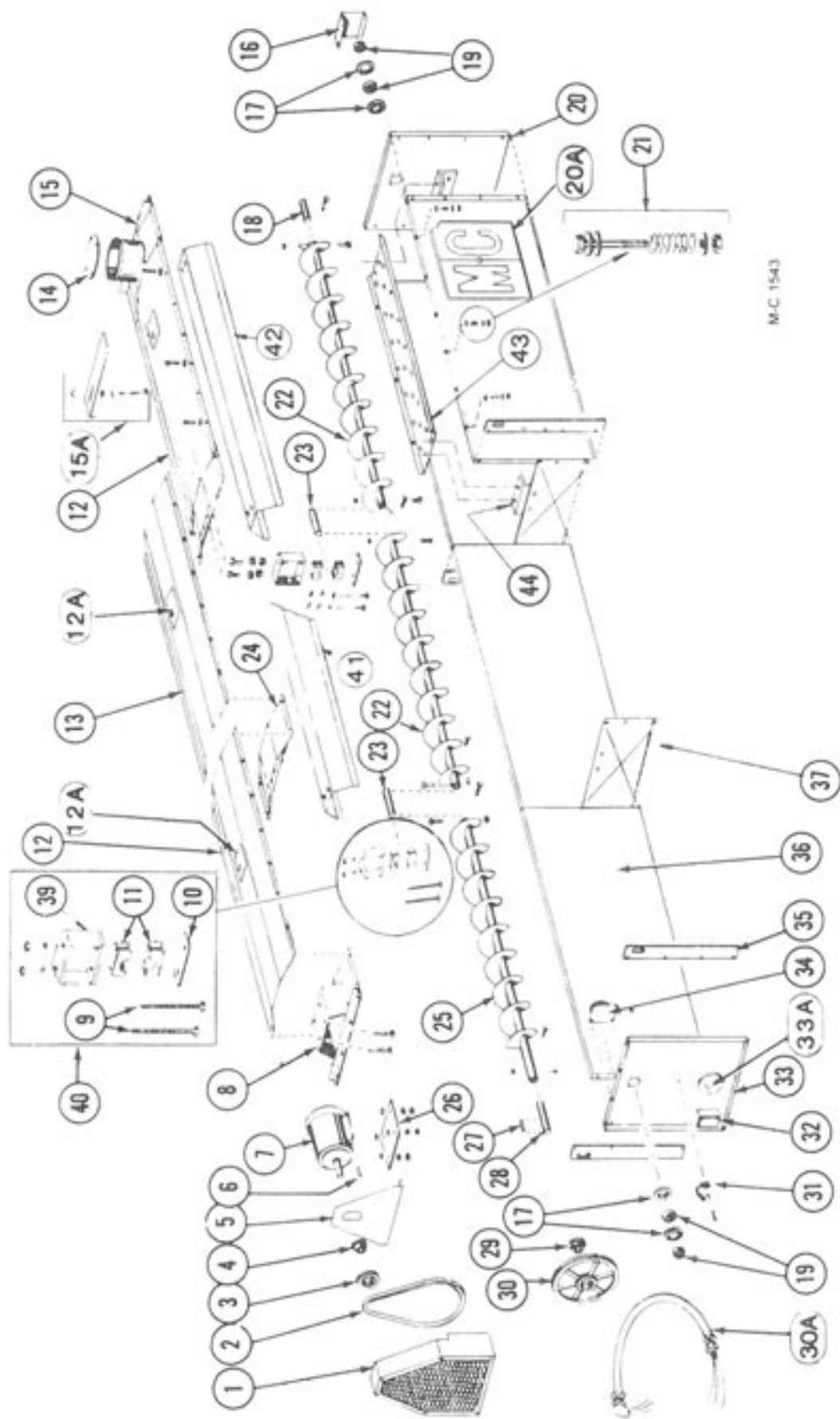
Hopper and Level Auger



Hopper and Level Auger

Ref.	Part No.	Qty (16') (24')	Description	Ref.	Part No.	Qty (16') (24')	Description
1	129 0003	1	Level Auger Guard	12	129 2945	2	Hopper Cover - Front & Rear (76")
2	128 6103	1	2/3V/710 (banded belt) or 128 6104 in matched set of two	12A	128 8355	2	Warning Decal
3	128 6207	1	3V/3.65 x 2 Groove	13	129 2946	-	Hopper Cover - Center (83")
4	128 6214	1	1 1/2" SH Bushing - for 3HP & 5HP motor (incl. capscrews & lockwashers)	14	129 4204	1	Receiving Tube Cover
5	129 4944	1	Level Auger Guard Back	15	129 0002	1	Receiving Hopper
6	001 5119	-	Key - 1/4" x 2" (3HP & 5HP motors)	15A	129 4205	1	Flow Restrictor
7	128 6818	1	230/460V 3HP 3Ø Motor		129 5703	1	Position & Locking Bolt
8	128 6815	-	230/460V 5HP 3Ø Motor		000 8168	3	3/8-16 Flanged Locknut
9	001 8287	2	Level Auger Motor Mount	16	129 4947	1	Stub Guard
	001 8139	2	3/8"-16 x 3 3/4" Capscrew - Grade 5	17	001 6004	4	Bearing Flangette 1 1/4"
	000 8162	8	3/8" Lockwasher	18	128 5052	1	Level Auger Rear Shaft (1 1/4" x 8")
10	128 3415	2	Bearing Hanger Bar	19	001 6003	2	Bearing w/Lock Collar - 1 1/4"
11	128 6021	1	Wood Bearing - 1 1/4" (2 halves)	20	129 2834	1	Hopper End Panel - Rear
				20A	121 8343	2	M-C Decal (26 1/2" x 23")
				21	000 8101	12	3/4"-20 x 2" Capscrew
					131 8708	12	Spring (3/8" OD x 1 3/4")
					000 8172	36	3/4" Flatwasher
					000 8210	12	3/4"-20 Two-Way Locknut

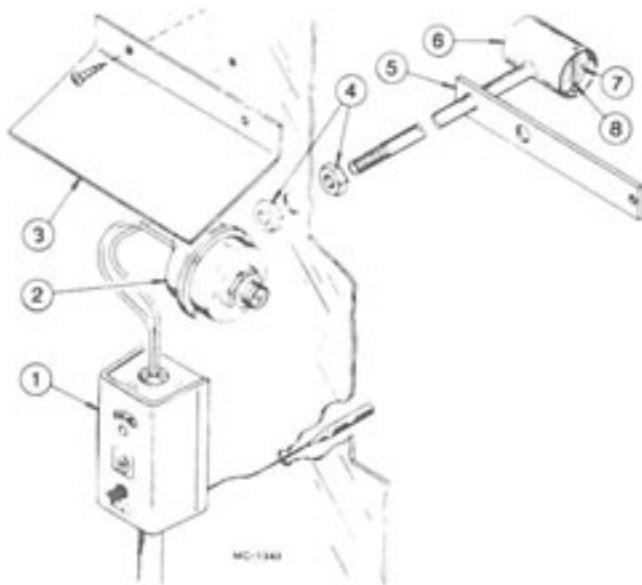
Hopper and Level Auger



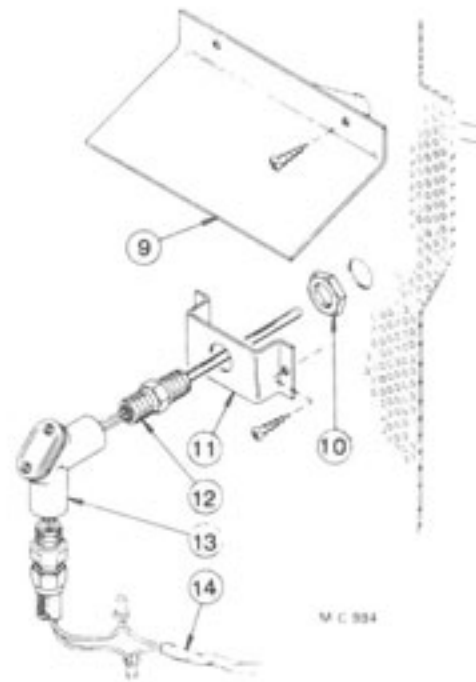
Hopper and Level Auger

Ref.	Part No.	Qty (16') (24')	Description	Ref.	Part No.	Qty (16') (24')	Description
22	128 0122	1	Level Auger (93 1/2" RH Flighting)	32	128 6922	1	Slatter Box (1/2")
23	128 5050	1	Level Auger Center Shaft (1 1/4" x 10 1/4")	33	129 2835	1	Hopper End Panel - Front
24	129 0000	1	Level Auger Support	33A	129 5702	1	Port View Lens
25	128 0121	1	Level Auger (82 3/4" RH Flighting)	34	128 6992	1	Bin Level Indicator (See pg. 36)
	001 8137	8	3/8-16 x 2" Capscrew - Grade 5	35	129 3412	4	Lifting Bar
	001 8149	8	3/8-16 Two-Way Locknut	36	129 2836	4	Hopper Side
26	129 4202	1	Level Auger Motor Mount Plate	37	129 2715	1	Hopper Sectional Panel
	000 8161	4	1/2-13 x 3 1/2" Capscrew (Full Thread)	39	128 0292	1	Level Auger Bearing Support
	000 8170	4	1/2-13 Flanged Locknut		001 8209	2	3/8-16 x 1" Hex Washer Head Bolt - Grade 5
	000 8163	8	1/2-13 Hex Nut		001 8139	2	3/8" Lockwasher
27	001 5120	1	Key-1/4" x 1 1/2"		000 8162	2	3/8-16 Hex Nut
28	128 5051	1	Level Auger Front Shaft (1 1/4" x 10")	40	122 1008	1	Level Auger Bearing Kit (Incl. ref. 10, 11, 39 & 40 in quantities reqd. for one bearing)
29	121 6241	1	1 1/4" SK Bushing (Incl. capscrews & lockwashers)	41	129 2839	-	Auger Cover Long
30	128 6208	1	3V/19.0 x 2 Groove	42	129 2838	1	Auger Cover Short (Rear)
30A	128 1960	1	Flexible Conduit w/Wires	43	128 2761	1	Pan Under Auger
31	128 8951	1	Rubber Strap w/Hook	44	128 2760	2	Auger Pan Support Bracket

Moisture Control, Air Pressure and High Limit Switches



Air Pressure and High Limit Switches

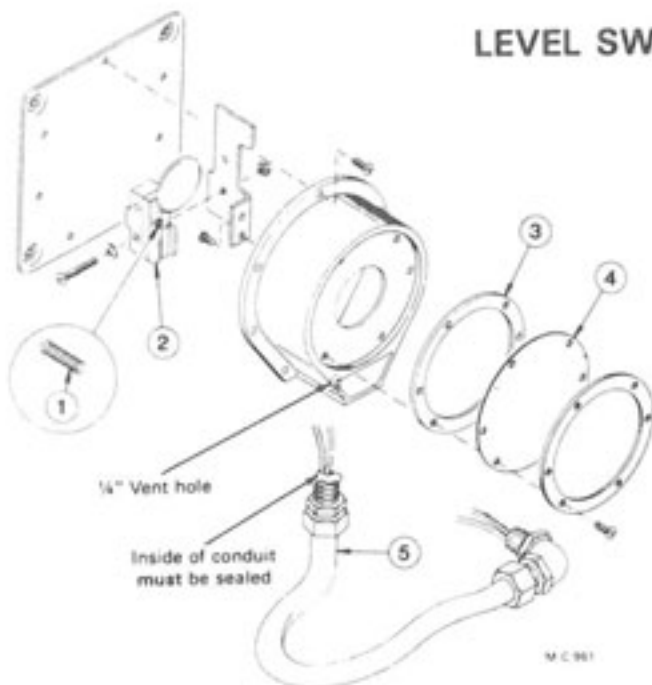


Moisture Control Probe

Ref.	Part No.	Description
1	124 6934	High Limit Switch - Adjustable-Manual Reset
2	121 6849	Air Pressure Switch
3	121 2946	High Limit Switch Cover
4	121 8000	Pipe Locknut - 1/4"
5	121 2007	Air Pressure Tube Brkt.
6	121 0169	Air Pressure Tube
7	121 5716	Air Pressure Tube Filter
8	-----	Filter Retainer (Wire)

Ref.	Part No.	Description
9	121 0031	Moisture Control Shield
10	121 6915	Locknut - 1/2"
11	128 3007	Bracket
12	124 6893	Thermistor (Sensing Probe)
13	123 8089	1/2" Handy Ell
14	125 6908	18/2 PVC Cord w/Shield

LEVEL SWITCH ASSEMBLY



Ref.	Part No.	Qty.	Description
-	128 6992	1	Level Switch (Less Ref. 5)
1	122 6847	1	Spring
2	122 6848	1	Microswitch Ass'y
3	122 6850	1	Gasket
4	122 6849	1	Diaphragm (Teflon)
5	128 1995	1	Level Switch Wire Ass'y

DRYER MOTORS, CIRCUIT BREAKERS AND MAGNETIC STARTERS

MOTOR			CIRCUIT BREAKER			MAGNETIC STARTER			
HP	*FLA	Part No.	Part No.	Amps	Square "D" No.	Starter Part No.	Square "D" No.	Thermal Unit Part No.	Thermal Unit Size

200/208V - 3 PHASE - 60 HZ

□1.5	5.98	127 6833	128 6882	15	QOU 315	124 6931	DPS033	128 6947	B 9.10
†1.5	5.98	127 6861	128 6882	15	QOU 315	124 6931	DPS033	128 6947	B 9.10
2	7.82	127 6841	128 6882	15	QUO 315	124 6931	DPS033	128 6863	B 11.5
3	11.0	127 6832	124 6875	20	QOU 320	124 6931	DPS033	128 6823	B 17.5
5	17.5	127 6843	124 6876	35	QOU 335	124 6931	DPS033	120 6857	B 32
7.5	25.3	127 6858	124 6904	50	QOU 350	124 6930	DPS053	128 6979	B 40
10	32.2	203 6809	125 6912	60	QOU 360	124 6930	DPS053	128 6950	B 50
15	48.3	126 6854	128 6885	90	QOU 390	124 6930	DPS053	128 6953	B 79
20	62.1	127 6853	128 6966	100	QOU 3100	124 1082	DPA73	128 6827	CC 87.7
25	67.0	127 6852	128 6887	110	Q2L 3110	124 1082	DPA73	120 6844	CC 103
30	80.0	127 6859	124 6906	125	Q2L 3125	124 1083	DPA93	128 6954	CC 132

230V - 1 PHASE - 60 HZ

□1.5	8.3	121 6846	128 6878	20	QOU 220	124 6931	DPS033	128 6863	B 11.5
†1.5	10.6	127 6863	128 6878	20	QOU 220	124 6931	DPS033	120 6850	B 15.5
2	12.3	121 6862	124 6903	25	QOU 225	124 6931	DPS033	128 6949	B 19.5
3	20.0	128 6829	124 6909	40	QOU 240	124 6931	DPS033	120 6857	B 32
5	28.0	201 6815	128 6880	60	QOU 260	124 6930	DPS053	128 6979	B 40
†7.5	38.5	124 6816	124 6908	80	QOU 280	124 6930	DPS053	124 6910	B 66
†7.5	38.5	124 6888	124 6908	80	QOU 280	124 6930	DPS053	124 6910	B 66
10	45.0	124 6818	128 6881	90	QOU 290	124 6930	DPS053	128 6953	B 79
20	92.0	124 6879	124 6881	125	Q2L 2125	124 1083	DPA93	128 6820	CC 156

230V - 3 PHASE - 60 HZ

□1.5	5.0	121 6845	128 6882	15	QOU 315	124 6931	DPS033	120 6851	B 7.70
†1.5	5.0	127 6860	128 6882	15	QOU 315	124 6931	DPS033	120 6851	B 7.70
2	6.0	121 6861	128 6882	15	QOU 315	124 6931	DPS033	128 6947	B 9.10
3	9.0	128 6818	128 6882	15	QOU 315	124 6931	DPS033	125 6931	B 14.0
5	13.8	128 6815	124 6907	25	QOU 325	124 6931	DPS033	120 6855	B 25
7.5	20.6	121 6948	128 6968	40	QOU 340	124 6931	DPS033	128 6946	B 36
10	27.2	201 6818	125 6912	60	QOU 360	124 6930	DPS053	120 6853	B 45
15	39.2	201 6819	128 6891	80	QOU 380	124 6930	DPS053	128 6978	B 70
20	49.6	125 6934	128 6885	90	QOU 390	124 1082	DPA73	128 6972	CC 74.6
25	61.0	201 6842	128 6966	100	QOU 3100	124 1082	DPA73	128 6827	CC 87.7
30	73.0	128 6986	128 6887	110	QL2 3110	124 1083	DPA93	128 6820	CC 156

*If FLA (Full Load Amps) shown does not match FLA imprinted on motor name plate, refer to Square D charts for correct thermal unit size.

□ - 3/8" shaft

† - 7/8" shaft

† - 124 6816 has 1 3/8" shaft. 124 6888 has 1 1/8" shaft.

DRYER MOTORS, CIRCUIT BREAKERS AND MAGNETIC STARTERS

MOTOR			CIRCUIT BREAKER			MAGNETIC STARTER			
HP	*FLA	Part No.	Part No.	Amps	Square "D" No.	Starter Part No.	Square "D" No.	Thermal Unit Part No.	Thermal Unit Size

380V - 3 PHASE - 50 HZ

1.5	2.9	127 6860	128 6931	15	FAL 36015	124 6931	DPS033	128 6951	B 6.25
**1.5	2.9	123 6876	128 6931	15	FAL 36015	124 6931	DPS033	128 6951	B 6.25
2	3.7	121 6861	128 6931	15	FAL 36015	124 6931	DPS033	120 6845	B 6.90
**2	3.7	124 6867	128 6931	15	FAL 36015	124 6931	DPS033	120 6845	B 6.90
3	5.2	128 6818	128 6931	15	FAL 36015	124 6931	DPS033	128 6947	B 9.10
15	23.0	201 6819	128 6937	60	FAL 36060	124 6930	DPS053	120 6853	B 45
20	30.5	125 6842	124 6905	70	FAL 36070	124 6930	DPS053	128 6950	B 50
25	35.9	128 6986	125 6929	80	FAL 36080	124 6930	DPS053	128 6983	B 56

460V - 3 PHASE - 60 HZ

□1.5	2.5	121 6845	128 6931	15	FAL 36015	124 6931	DPS033	128 6984	B 3.00
‡1.5	2.5	127 6860	128 6931	15	FAL 36015	124 6931	DPS033	128 6984	B 3.00
2	3.0	121 6861	128 6931	15	FAL 36015	124 6931	DPS033	128 6948	B 4.15
3	4.5	128 6818	128 6931	15	FAL 36015	124 6931	DPS033	120 6845	B 6.9
5	6.9	128 6815	128 6931	15	FAL 36015	124 6931	DPS033	128 6952	B 10.2
7.5	10.3	121 6948	128 6933	20	FAL 36020	124 6931	DPS033	128 6823	B 17.5
10	13.6	201 6818	125 6928	30	FAL 36030	124 6931	DPS033	120 6855	B 25.0
15	19.6	201 6819	128 6930	40	FAL 36040	124 6930	DPS053	128 6946	B 36
20	24.8	125 6934	128 6937	60	FAL 36060	124 6930	DPS053	120 6853	B 45
25	31	201 6842	124 6905	70	FAL 36070	124 6930	DPS053	128 6983	B 56
30	37	128 6986	125 6929	80	FAL 36080	124 6930	DPS053	128 6978	B 70

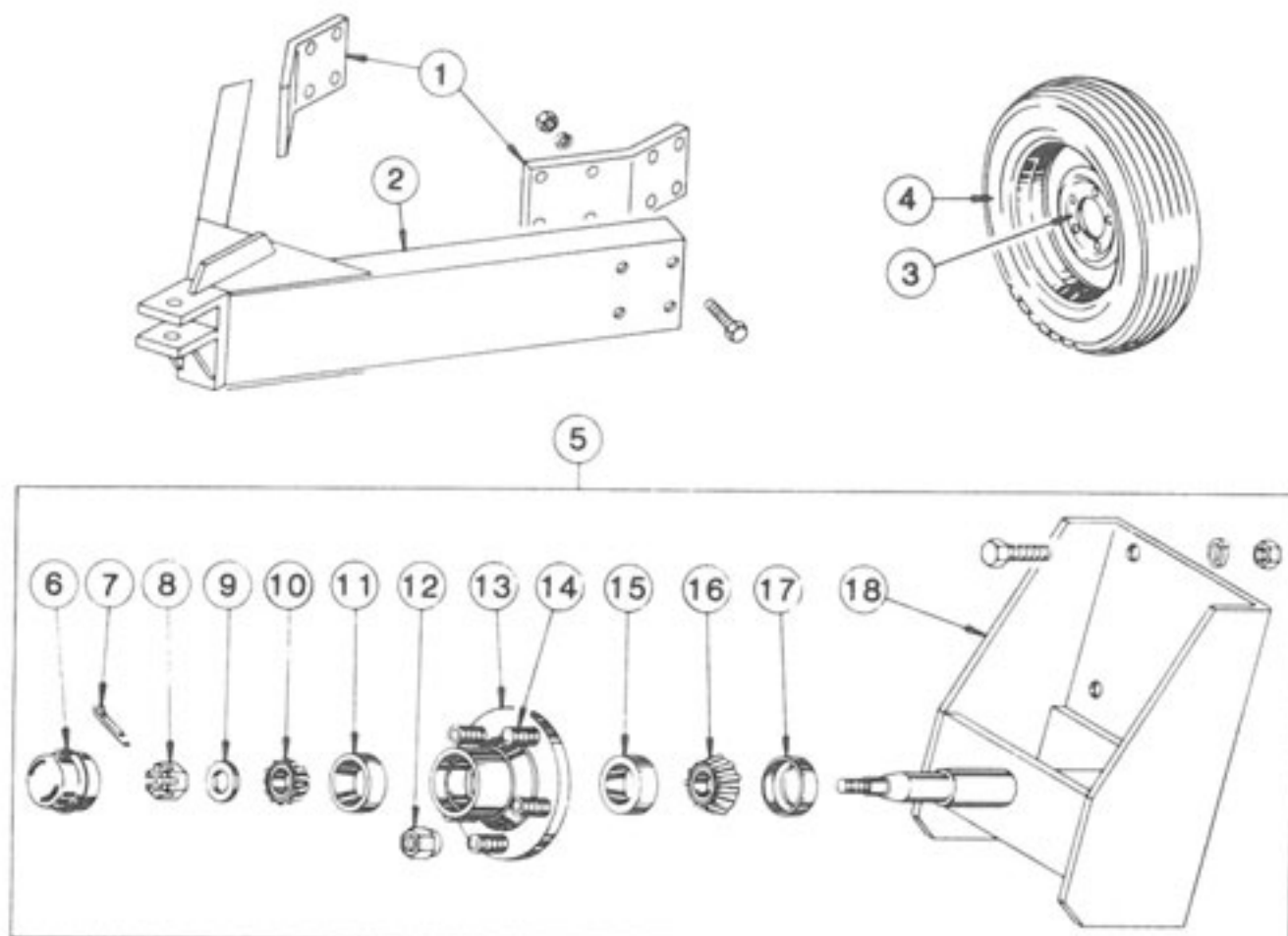
575V - 3 PHASE - 60 HZ

□1.5	2	127 6815	128 6931	15	FAL 36015	124 6931	DPS033	128 6984	B 3.00
‡1.5	2	127 6862	128 6931	15	FAL 36015	124 6931	DPS033	128 6984	B 3.00
2	2.4	127 6816	128 6931	15	FAL 36015	124 6931	DPS033	120 6848	B 3.70
3	3.6	127 6814	128 6931	15	FAL 36015	124 6931	DPS033	120 6829	B 5.50
5	5.5	127 6847	128 6931	15	FAL 36015	124 6931	DPS033	128 6985	B 8.20
7.5	8.2	127 6828	128 6931	15	FAL 36015	124 6931	DPS033	128 6863	B 11.5
10	10.8	127 6857	128 6933	20	FAL 36020	124 6931	DPS033	128 6823	B 17.5
15	15.6	127 6845	125 6928	30	FAL 36030	124 6931	DPS033	128 6971	B 28
20	19.8	127 6844	128 6930	40	FAL 36040	124 6931	DPS033	128 6946	B 36
25	25	127 6846	128 6937	60	FAL 36060	124 6930	DPS053	120 6853	B 45
30	30	124 6902	128 6937	60	FAL 36060	124 6930	DPS053	128 6983	B 56

*If FLA (Full Load Amps) shown does not match FLA imprinted on motor name plate, refer to Square D charts for correct thermal unit size.

- ** - "C" Face
- - 5/8" shaft
- ‡ - 7/8" shaft

PORTABILITIES (Optional)



120 1030 - 4 Wheel Portabilities (Incl. Ref. 1 & 2 and four of Ref. 3 & 5 less tires)

M C 980

Ref.	Part No.	Qty.	Description	Ref.	Part No.	Qty.	Description
1	128 3671	2	Pole Mount Brkt.	6	001 8996	1	Hub Cap
	128 8196	8	3/4-10 x 2 1/2" Capscrew - Grd.5	7	001 8252	1	Cotter Pin - 1/8" x 1"
	000 8182	8	3/4" Lockwasher	8	001 8253	1	Spindle Nut
	000 8165	8	3/4-10 Hex Nut	9	001 8254	1	Spindle Washer
2	120 0047	1	Dryer Pole	10	001 6000	1	Bearing Cone - Outer
	128 8195	8	3/4-10 x 2" Capscrew - Grd. 5	11	002 6000	1	Bearing Cup - Outer
	000 8182	8	3/4" Lockwasher	12	001 8989	5	1/2-20 Lug Nut - 45°
	000 8165	8	3/4-10 Hex Nut	13	001 8992	1	Wheel Hub Ass'y - 5 Bolt (Incl. Ref. 11, 14 & 15)
3	001 8993	1	5 Bolt Wheel - 15"	14	002 8152	5	1/2-20 x 1 1/2" Stud
4	127 8990	1	7.60 x 15-6 Ply Tubeless Tire	15	002 6001	1	Bearing Cup - Inner
5	120 1028	1	Wheel Spindle & Hub Ass'y (Incl. Ref. 6 thru 18)	16	001 6001	1	Bearing Cone - Inner
	000 8146	6	3/4-11 x 1 1/2" Capscrew - Grd.5	17	001 8991	1	Seal
	000 8181	6	3/4" Lockwasher	18	120 0031	1	Wheel Mount
	000 8164	6	3/4-11 Hex Nut				

WALKWAY (Optional)

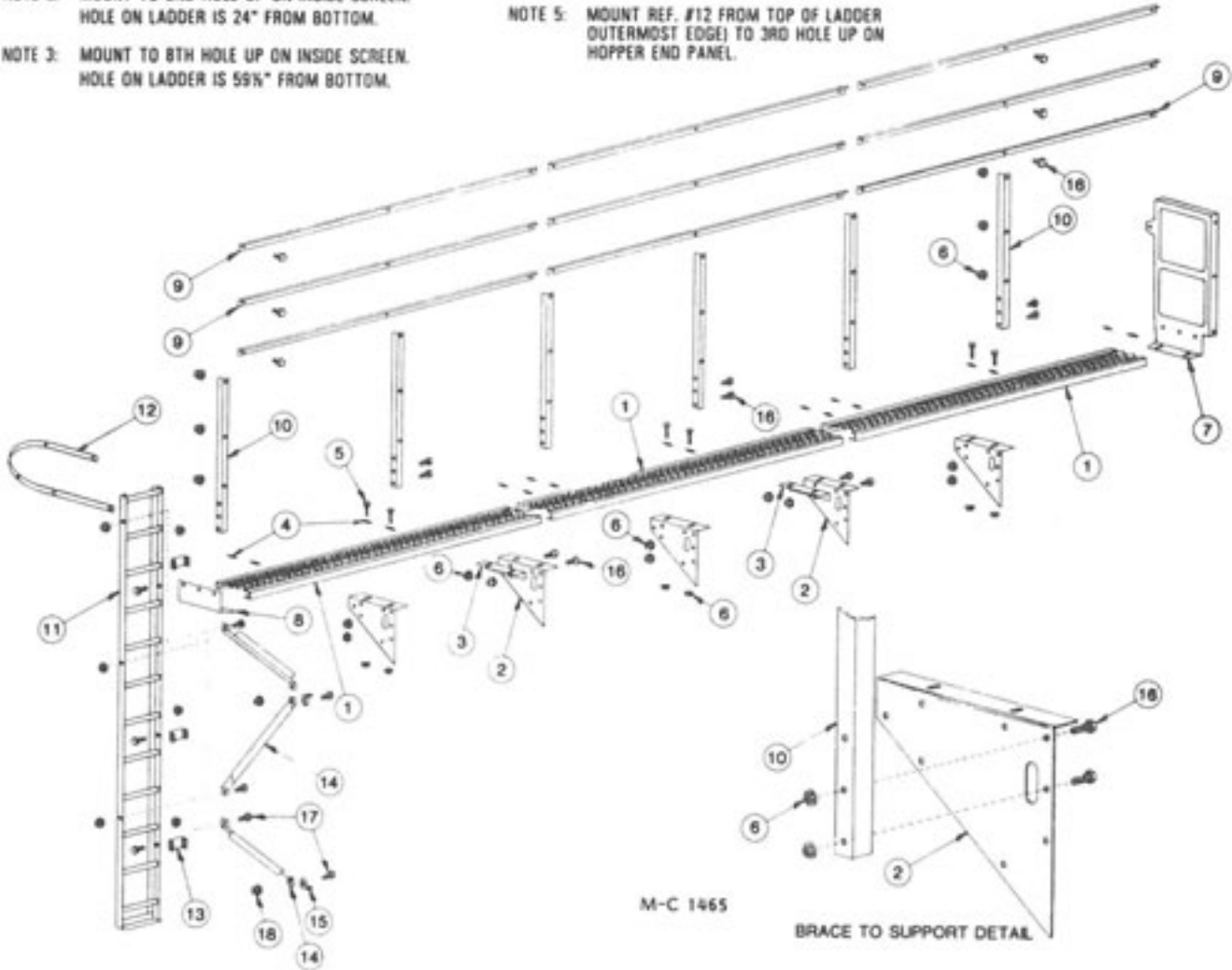
NOTE 1: USE 2 LOWER MTG. HOLES ONLY ON ITEM(S) #10.

NOTE 2: MOUNT TO 2ND HOLE UP ON INSIDE SCREEN.
HOLE ON LADDER IS 24" FROM BOTTOM.

NOTE 3: MOUNT TO 8TH HOLE UP ON INSIDE SCREEN.
HOLE ON LADDER IS 59" FROM BOTTOM.

NOTE 4: MOUNT BRACKET THRU SAME HOLE AS
REF. #8 IS MOUNTED.

NOTE 5: MOUNT REF. #12 FROM TOP OF LADDER
(OUTERMOST EDGE) TO 3RD HOLE UP ON
HOPPER END PANEL.



M-C 1465

BRACE TO SUPPORT DETAIL

Ref. Part No.	(690) Qty	(970) Qty	Description	Ref. Part No.	(690) Qty	(970) Qty	Description		
1	128 5712	1	1	Walkway Grating - 95 1/2"	9	129 2004	6	9	Standard Guard Rail
	129 8700	1	2	Walkway Grating - 95 1/2"	10	129 2015	4	6	Guard Rail Brace
2	129 2600	3	5	Bridge Support	11	120 0045	1	1	Ladder - 11 1/2'
3	129 2602	1	2	Walkway Grating Support	12	128 2031	1	1	Ladder Cage Hoop - 54"
4	120 8994	12	18	Walkway Grating Anchor Clip	13	128 2660	3	3	Ladder Mounting Bracket
5	001 8276	12	18	5/16-18x3" Carriage Bolt	14	128 2661	3	3	Ladder Mounting Angle
6	000 8169	142	168	5/16 Flanged Whiz Locknut	15	001 3302	3	3	Angle Clip
7	128 2758	1	1	Walkway End Guard 24 x 47 1/2"	16	001 8202	130	150	5/16-18x 3/4" Hex Washer Head Bolt - Grd. 5
8	124 2601	1	1	Walkway End Support	17	001 8209	12	12	3/8-16 x 1" Hex Washer Head Bolt - Grd. 5
					18	000 8168	12	12	3/8-16 Flanged Locknut



Iron Horse Quality