

Access Dryer Operational Data from Any Device, Anywhere

3-hour historical snapshot of how the dryer has been performing with data logged every 10 minutes.

Interactive trending, up to 24-hour history right on your smartphone!

**Monitor critical dryer data:**

- Alarms, including a list of all active alarms
- Discharge mode
- Infeed and discharge moisture/temperature
- Discharge rate
- Average mid-grain temperature and setpoint
- Individual mid-grain temperature readings
- Plenum setpoints and actual temperatures
- Text messaging and email alarm notifications



**Try Risk Free**

If you are not happy with M-C Trax for any reason, simply return the hardware within 30 days and we will refund the full purchase price. M-C Trax is available through your M-C dealer.



**Remote Monitoring Made Easy!**

M-C Trax setup does not require any network configuration or software for the dryer owner to worry about. The only requirement is that a wired internet connection be available.

*Note: Remote monitoring requires a web browser that supports javascript and a working Internet connection. Due to circumstances beyond our control, a small percentage of users may have difficulties connecting to M-C Trax. This can be the result of an Internet Service Provider (ISP) blocking access or a local network issue. If you are unable to connect, you can work with your ISP or system administrator to overcome the issue, or simply return the equipment within 30 days of your purchase for a full refund. Purchase of a dryer equipped with M-C Trax includes the required hardware and the first year's subscription to the service. Each year thereafter, the end-user will be required to renew the annual service subscription at the current price.*

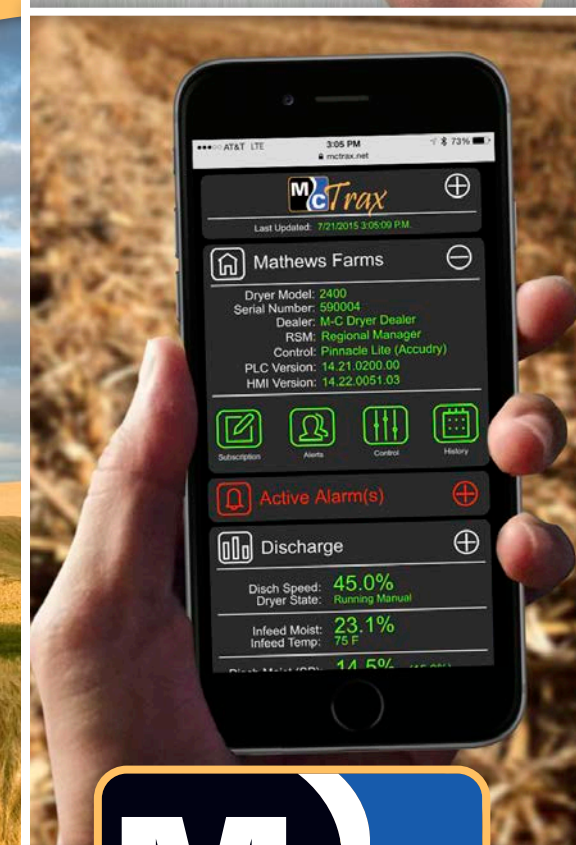


**BASIC MANUAL CONTROL SYSTEM**

As an alternative to Pinnacle 20|20, all M-C dryers can be equipped with the Basic Manual Control option. This non-PLC based control system includes an interface which features simple buttons and switches to control the start/stop of fan(s), burner(s), fill equipment and discharge equipment. In addition, the Basic Manual Control option does not offer digital plenum temperature control, grain moisture sensors, mid-grain temperature sensors, or M-C Trax.

**CONTROL SYSTEM DRYER CONTROL AND MONITORING**

**PINNACLE 20|20**



Your Authorized M-C Dealer is:



Mathews Company  
[www.mathewscompany.com](http://www.mathewscompany.com)  
 Crystal Lake, IL  
 phone: 1-815-459-2210  
 fax: 1-815-459-5889  
 email: [mcsales@mathewscompany.com](mailto:mcsales@mathewscompany.com)





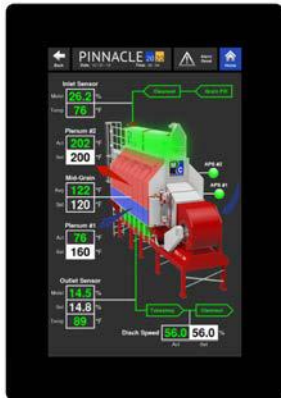
# PINNACLE 20|20

## CONTROL SYSTEM

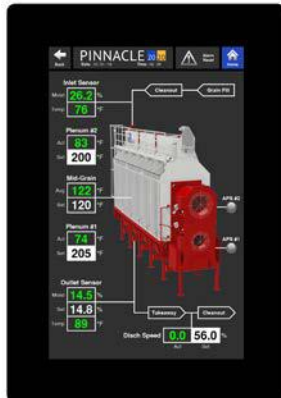
Experience the ease of dual touch screens with Pinnacle 20|20

Pinnacle 20|20 is now available for Modular & Commercial Tower dryers, ECO Series dryers, and the New Legacy Series dryers.

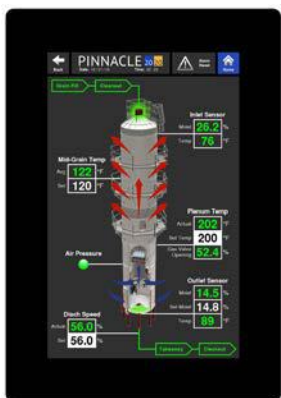
ECO SERIES



LEGACY SERIES



MODULAR TOWER SERIES  
COMMERCIAL TOWER SERIES



- PLC-Based Dryer Control System
- Dual 10" HD Touchscreens
- Graphical User Interface
- 24 VDC Control Safety Circuit

## DUAL TOUCH SCREENS

### Simple Navigation

Allows all control to be within 2 touches away

- Quick launch buttons to easily access related dryer information



### Robust Diagnostics

Pinnacle 20|20 has been designed with service in mind

- Easily reset alarm faults
- Assistance on faulted component only a touch away
- Component resource library

"It's easy to operate... I couldn't be more impressed."

- S. Wendel, Iowa

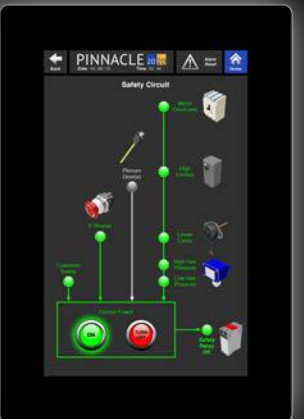
"We like the ease of operation, low maintenance and the way it controls the dryer."

- Robert L., Missouri

No physical buttons or switches, all controls are on screen



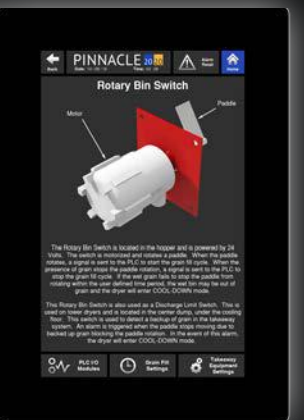
Diagnostic safety circuit screen



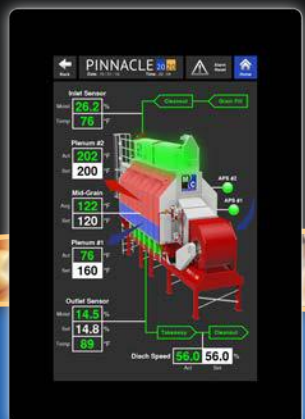
Alarms clearly announced



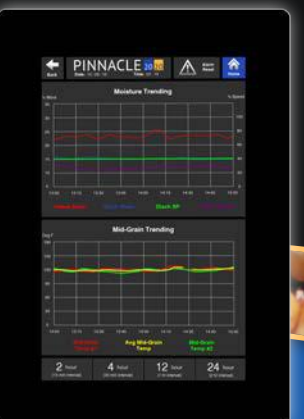
Quick access to component information



Overview screen provides snapshot of entire dryer's operation



Historical data trending for moistures and mid-grain temperatures



"Touch screen was easy to navigate, information was accurate and easy to understand."

-Mike K., Iowa



Read what customers are saying