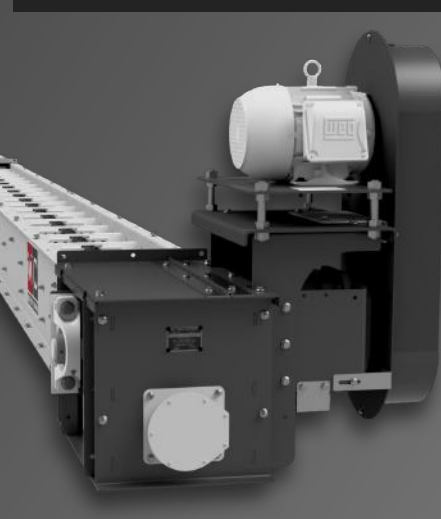
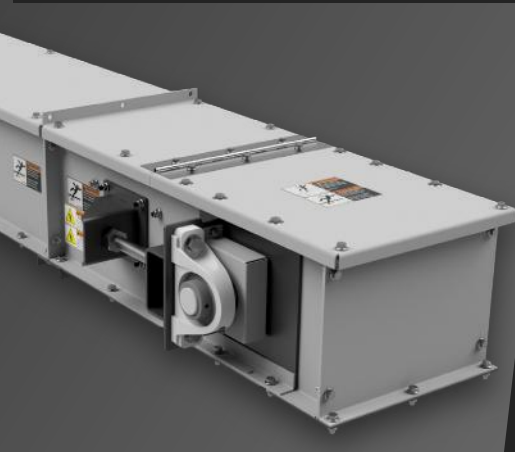




MATERIAL HANDLING DRAG CONVEYORS



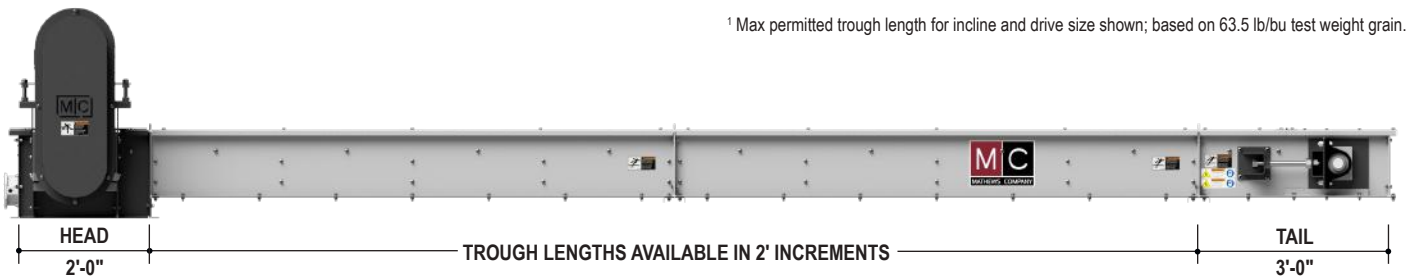
70 CELEBRATING
YEARS
1954 - 2024

**Performance You Can Trust, Powered by
IRON HORSE QUALITY**

SPECIFICATIONS & CAPACITIES

MODELS	1209-138-025	1209-171-031	1212-119-036	1212-163-049	1215-135-057	1215-173-073	1515-155-082	1518-153-104
Discharge Capacity	2,500 bu/hr	3,100 bu/hr	3,600 bu/hr	4,900 bu/hr	5,700 bu/hr	7,300 bu/hr	8,200 bu/hr	10,400 bu/hr
Trough Size (width x height)	12" x 9"	12" x 9"	12" x 12"	12" x 12"	12" x 15"	12" x 15"	15" x 15"	15" x 18"
Chain Speed	138 ft/min	171 ft/min	119 ft/min	163 ft/min	135 ft/min	173 ft/min	155 ft/min	153 ft/min
TROUGH LENGTH ¹ (FLAT INSTALL)	1209-138-025	1209-171-031	1212-119-036	1212-163-049	1215-135-057	1215-173-073	1515-155-082	1518-153-104
3 HP Drive	66'	52'	48'	34'	30'	24'	20'	16'
5 HP Drive	110'	88'	80'	58'	50'	40'	36'	28'
7.5 HP Drive	-	134'	120'	88'	76'	60'	54'	42'
10 HP Drive	-	-	-	118'	102'	80'	72'	58'
15 HP Drive	-	-	-	-	-	120'	108'	86'
20 HP Drive	-	-	-	-	-	-	-	116'
TROUGH LENGTH ¹ (5° INCLINE)	1209-138-025	1209-171-031	1212-119-036	1212-163-049	1215-135-057	1215-173-073	1515-155-082	1518-153-104
3 HP Drive	52'	42'	38'	28'	24'	18'	16'	14'
5 HP Drive	88'	70'	64'	46'	42'	32'	28'	22'
7.5 HP Drive	132'	106'	96'	70'	62'	48'	44'	34'
10 HP Drive	-	142'	130'	94'	84'	64'	58'	46'
15 HP Drive	-	-	-	142'	126'	98'	88'	70'
20 HP Drive	-	-	-	-	-	130'	118'	94'
25 HP Drive	-	-	-	-	-	-	-	118'
TROUGH LENGTH ¹ (10° INCLINE)	1209-138-025	1209-171-031	1212-119-036	1212-163-049	1215-135-057	1215-173-073	1515-155-082	1518-153-104
3 HP Drive	44'	34'	32'	24'	20'	16'	14'	12'
5 HP Drive	72'	58'	54'	40'	34'	26'	24'	20'
7.5 HP Drive	110'	88'	82'	60'	52'	40'	36'	30'
10 HP Drive	-	118'	110'	80'	70'	54'	50'	40'
15 HP Drive	-	-	-	120'	106'	82'	74'	60'
20 HP Drive	-	-	-	-	-	110'	110'	80'
25 HP Drive	-	-	-	-	-	-	-	100'

DIMENSIONS



¹ Max permitted trough length for incline and drive size shown; based on 63.5 lb/bu test weight grain.

At Mathews Company, we continuously strive to improve our products. Accordingly, changes may occur that are not reflected in the specifications and capacities contained in this brochure.

Your Authorized M-C Dealer is:



Mathews Company
www.MathewsCompany.com
 500 Industrial Ave
 Crystal Lake, IL 60012
 815-459-2210
mcsales@mathewscompany.com