



TOWER DRYERS

SPECIFICATIONS & CAPACITIES

MODELS	3000	3500	4000	4800
Heat Section Holding Capacity, bu (m ³)	2,092 (73.4)	2,343 (82.2)	2,594 (91.0)	2,888 (101.3)
Cool Section Holding Capacity, bu (m ³)	700 (24.6)	700 (24.6)	826 (29.0)	826 (29.0)
Additional Holding Capacity, bu (m ³)	919 (32.2)	919 (32.2)	919 (32.2)	919 (32.2)
Total Height, (m)	85'-3" (26.0)	91'-3" (27.8)	100'-3" (30.6)	106'-3" (32.4)
Fill Height, (m)	83'-5" (25.4)	89'-5" (27.3)	98'-5" (30.0)	104'-5" (31.8)
Diameter, (m)	17'-6" (5.3)	17'-6" (5.3)	17'-6" (5.3)	17'-6" (5.3)
Grain Column Thickness, (cm)	12" (30.5)	12" (30.5)	12" (30.5)	12" (30.5)
Number of External Walkways	2	3	3	3
Max Burner Capacity, MMBTU/hr (kW thermal)	33.7 (9,849)	36.3 (10,609)	42.5 (12,421)	44.2 (12,919)
Average Burner Capacity, MMBTU/hr (kW thermal)	20.2 (5,904)	21.8 (6,371)	25.5 (7,453)	26.5 (7,745)
Fan(s) Total Airflow, CFM (m ³ /hr)	153,000 (259,947)	156,000 (265,044)	193,000 (327,907)	200,000 (339,800)
Number of Fans	3	3	3	3
Fan Motor(s) Size, HP (kW)	3 x 50 (3 x 37.3)	3 x 60 (3 x 44.7)	3 x 75 (3 x 55.9)	3 x 75 (3 x 55.9)
Capacity, Shelled Corn, 20%-15% ¹ wet bushels/hr (wet metric tonnes/hr) ² dry bushels/hr (dry metric tonnes/hr) ²	up to 3,190 (79.0) 3,000 (69.9)	up to 3,720 (92.1) 3,500 (81.6)	up to 4,250 (105.2) 4,000 (93.2)	up to 5,100 (126.2) 4,800 (111.9)
Capacity, Shelled Corn, 25%-15% ¹ wet bushels/hr (wet metric tonnes/hr) ² dry bushels/hr (dry metric tonnes/hr) ²	up to 2,040 (53.8) 1,800 (42.0)	up to 2,380 (62.8) 2,100 (49.0)	up to 2,720 (71.8) 2,400 (55.9)	up to 3,175 (83.8) 2,800 (65.3)

¹The information contained in this brochure is intended to assist our customers in selecting the grain drying system that they believe best meets their unique preferences and needs. The performance figures and capacities presented in this brochure are only estimates, based on calculated simulations, and do not constitute express or implied warranties. Many factors influence the grain drying process, including ambient temperature, relative humidity, grain variety, grain quality, grain temperature, dryer operating temperatures, dryer add-ons and accessories, and dryer condition, maintenance and operation.
²Capacities in metric tonnes/hr are based on a grain bulk density of: 749 kg/m³ (wet @ 25% moisture), 703 kg/m³ (wet @ 20% moisture), 661 kg/m³ (dry @ 15% moisture).



At Mathews Company, we continuously strive to improve our products. Accordingly, changes may occur that are not reflected in the specifications and capacities contained in this brochure.

Your Authorized M-C Dealer is:



Mathews Company
www.MathewsCompany.com
 500 Industrial Ave
 Crystal Lake, IL 60012
 815-459-2210
mcsales@mathewscompany.com

BRO-18T01-1023

70 CELEBRATING
YEARS
 1954 - 2024



SCAN ME TO
 LEARN MORE

Grain Site Specialists

GRAIN DRYERS • BUCKET ELEVATORS • DISTRIBUTORS • CONVEYORS



COMMERCIAL TOWER SERIES

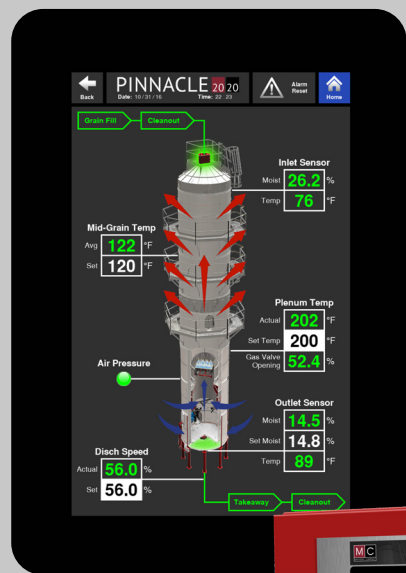
The **MISSION** of Mathews Company is to design and build innovative, high-quality equipment by way of engineering excellence and world class manufacturing. Our goal is building relationships that last with our dealers, customers, and employees.

PINNACLE 20|20

CONTROL SYSTEM

Experience the ease of available dual touch screens with Pinnacle 20|20

- PLC-Based Dryer Control System
- Dual 10" (25.4 cm) HD Touchscreens
- Easy User Interface
- 24 VDC Control Safety Circuit



Quick Glance

- Easier to Navigate
- Bright, Easy to See Graphics
- All Dryer Controls Are Within 2 Screen Taps
- Built-In Backup
- Better Diagnostics



Remote Control

Control Your Dryer from Anywhere in the World!



Made Easy

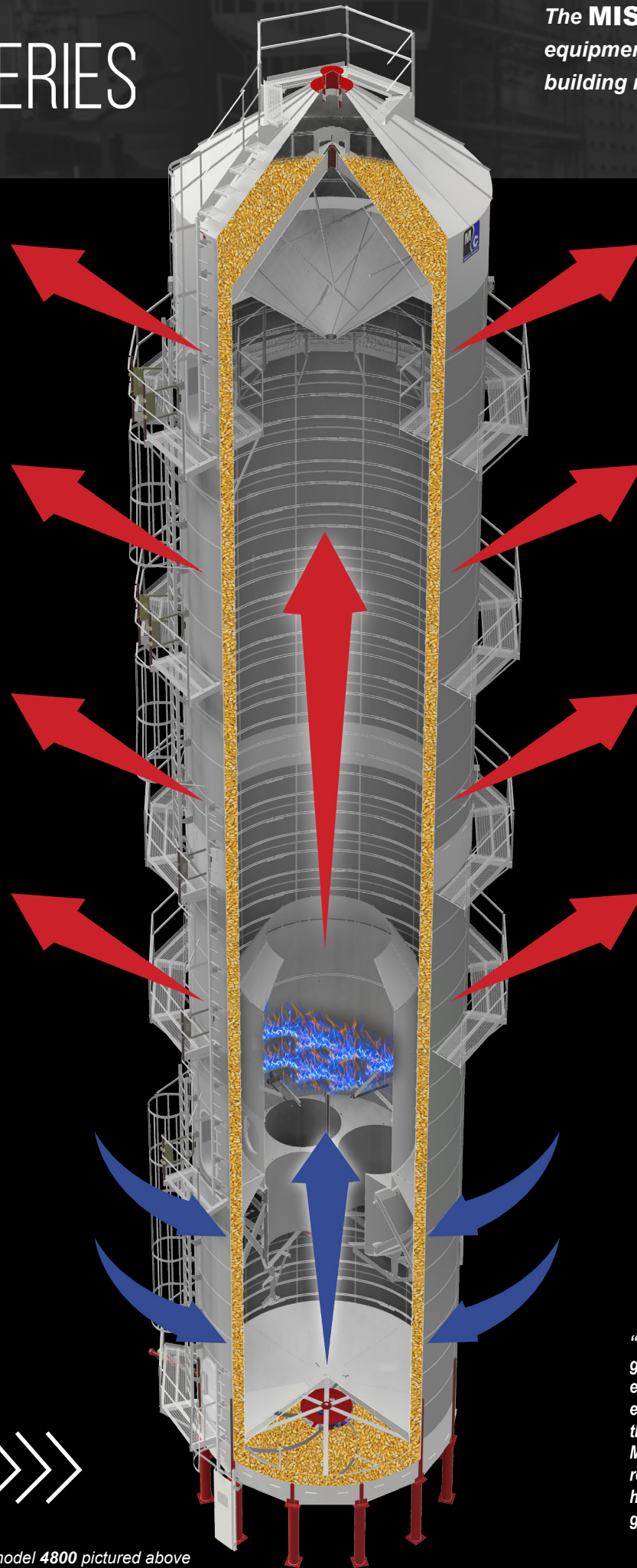
M-C Trax setup does not require any network configuration or software. The only requirement is that a wired internet connection is available at the dryer.

First Year is Free!

After the first free year, if you are not happy with M-C Trax for any reason, cancel your subscription moving forward free of charge.

Read what customers are saying >>>

model 4800 pictured above



Vacuum Cool Energy Savings

Vacuum cooling is key to the popularity and success of M-C Tower Series dryers. Reclaiming heated air from cooling the grain results in less fuel usage and significant dollar savings. After blending the ambient air drawn from outside, the pre-heated air is returned to the blowers, lowering energy consumption and producing maximum efficiency.

M-C Tower Series dryers give maximum capacity while taking up less valuable square footage in your grain setup. Easy to operate, clean and quiet, reliable and efficient...M-C Tower Series dryers provide the best means to lower input costs and add profit to your harvest.

Smooth wall, stainless steel screens and heavy duty construction deliver long life and years of dependable service.

Grain exchangers equalize moisture and temperature in the grain column.

High efficiency burner with stainless steel construction and a cast aluminum manifold features high efficiency, low emission operation.

Self-cleaning sloped floor helps promote dryer cleanliness.

Inverted cone promotes uniform heat distribution and dryer cleanliness through M-C's proprietary design, ensuring optimal dryer operation.

Commercial-grade in-line centrifugal fans deliver air volume at low RPM for maximum motor life and efficient, quiet drying.

Sealed cooling floor prevents particulate matter from entering the drying process for a cleaner dryer operation.

Pinnacle 20|20, the standard dryer control system on all M-C dryers, features an intuitive, 10" (25.4cm) HD touchscreen for ultimate control, customization and usability.

High voltage cabinet with main disconnect protects motor starters, thermal overloads and electrical components from weather and dirt.

AccuDry™ moisture-based control is an available option featuring DryerMaster™ technology which measures incoming and discharged grain moisture to control the discharge rate of the dryer, ensuring precise and uniform grain moisture.

"M-C units are much more efficient both in the gas used for drying and for the electricity to operate the motor. The computerized controls are easy to operate and they are maintenance free... the grain quality is much higher, because the M-C units do not have any augers, which helps reduce the potential of fines...an elevator has to have good grain dryers, since 80% of our volume goes through the dryer."

Dale H., Cresco, IA

"The new M-C dryer really helps with the bottom line. You have to save every place you can, if you want to stay in business. It decreased our per bushel dryer cost 41%...it could pay for itself within three years. We are happy with the dryer's performance and efficiency, and we realize we will be using the M-C dryer for many years to come."

Kim L., Augusta, IL