



**CONTINUOUS
GRAIN DRYER**

300-1600

**ASSEMBLY-OPERATION AND
MAINTENANCE INSTRUCTIONS**

MODEL 900

DM 67S

MATHEWS COMPANY

CRYSTAL LAKE ILL., 60014 · U.S.A.

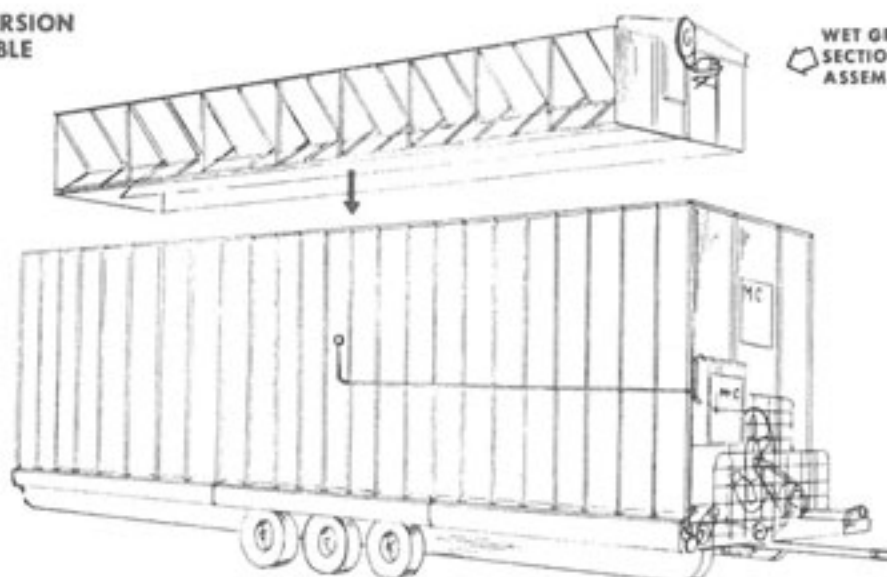
This supplemental sheet is designed to cover the various parts within the new M-C Model 900 Continuous Grain Dryer, which differ from, or are in addition to, those covered in Dryer Manual DM67.

For the most part, the operation of the Model 900 is exactly the same as that of the machines described in the manual. The electrical controls and mechanical devices are identical as is the gas line piping and control.

It is suggested that the purchaser first read through the Dryer Manual to familiarize himself with the operation of the M-C Continuous Flow Dryer, before referring to the supplemental sheet for specific details.

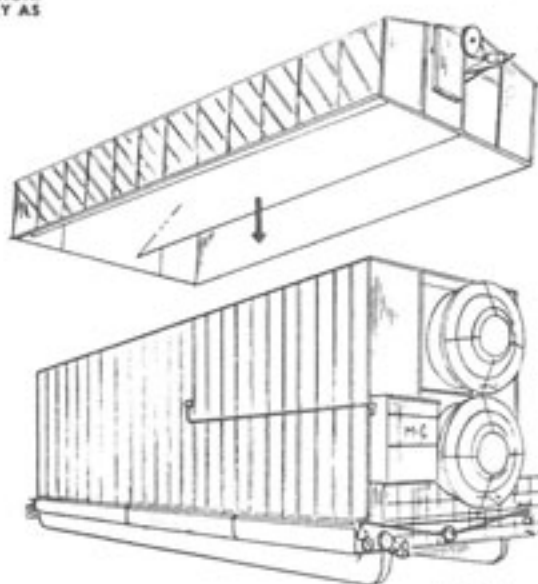
TRANSPORTATION & GENERAL ASSEMBLY INFORMATION

PTO OR ELECTRIC VERSION
OF PTO—PORTABLE

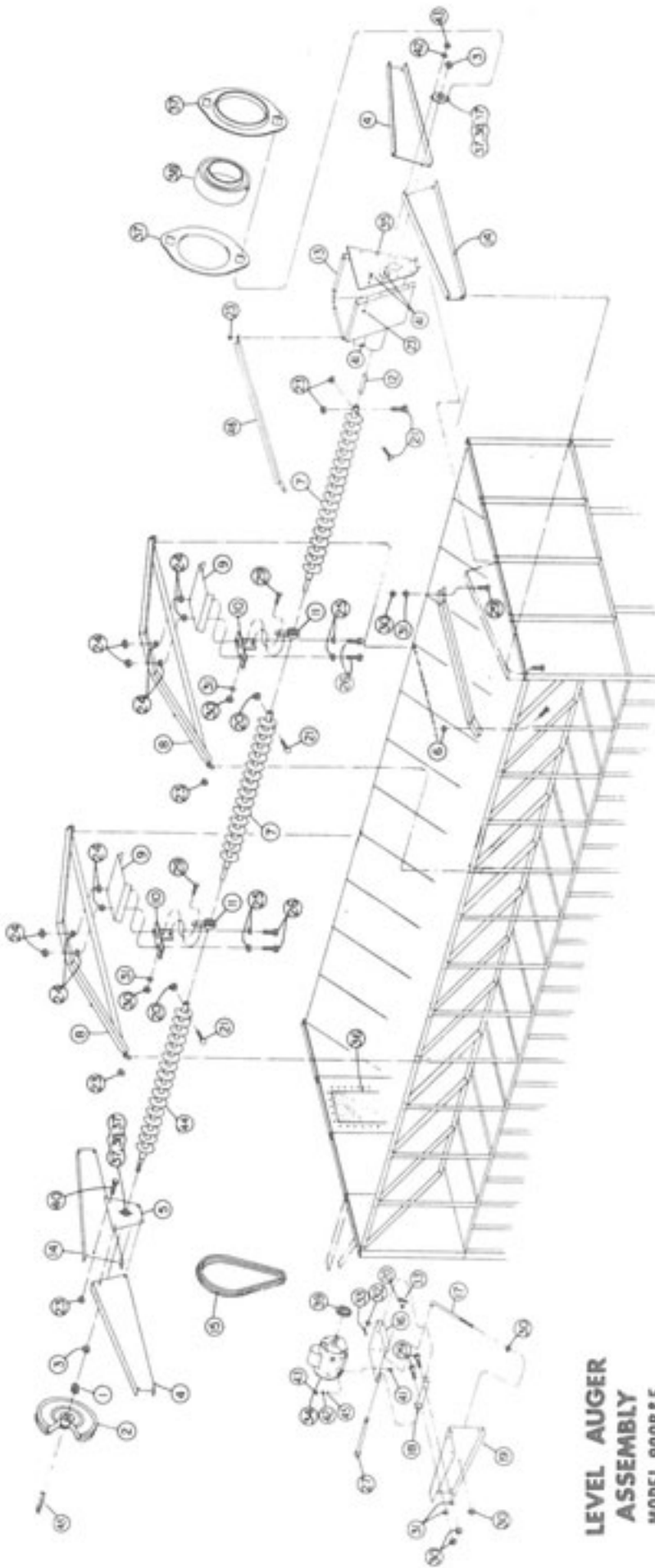


900B

NOTE: "E" MODEL DRYERS ARE DESIGNED FOR COMMERCIAL AND PERMANENT INSTALLATION. TRUCK OR FLAT CAR SHIPMENT IS NECESSARY AS THESE UNITS ARE NOT PORTABLE.

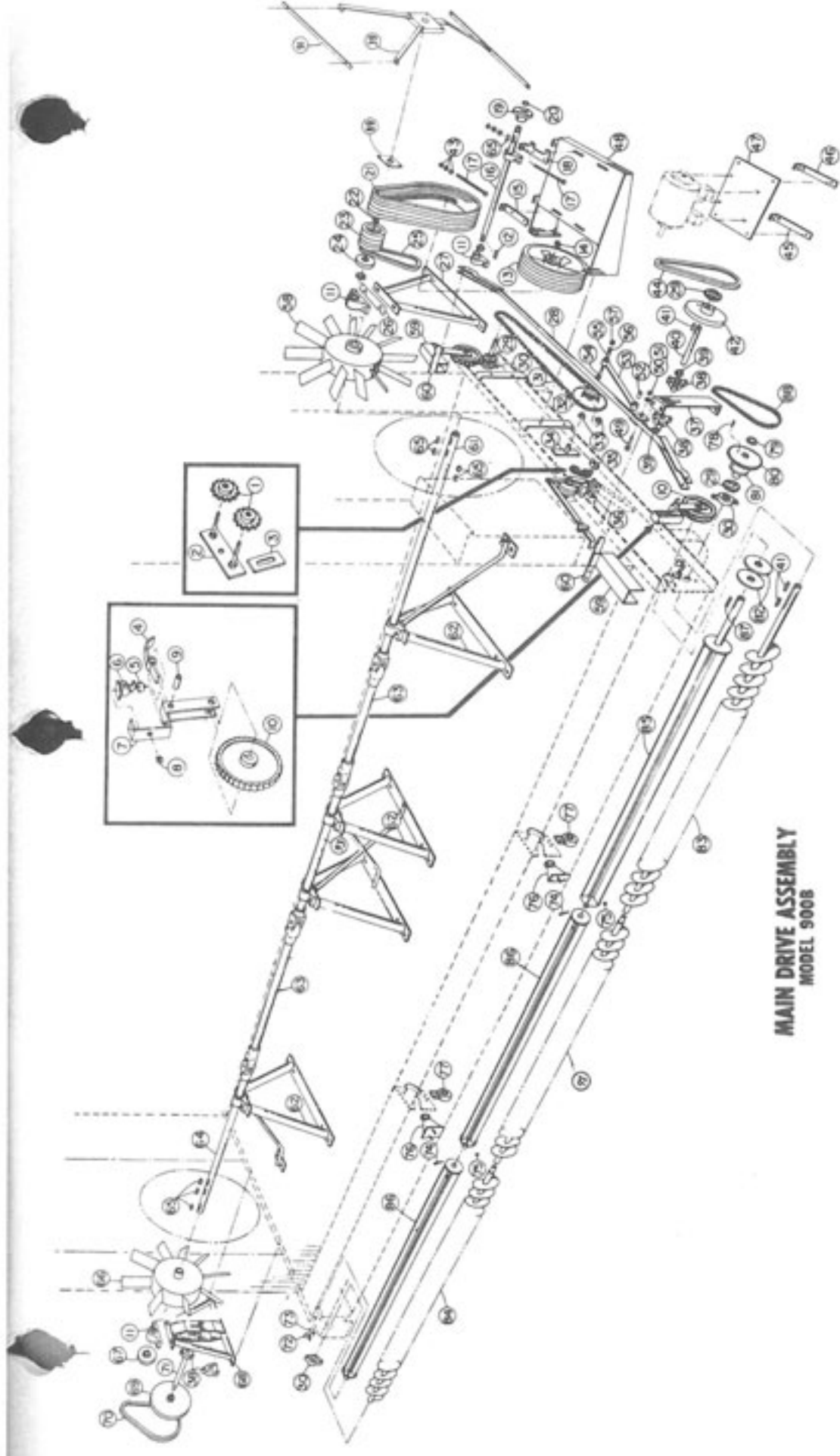


900E



**LEVEL AUGER
ASSEMBLY
MODEL 9008&E**

REF.	PART NO.	DESCRIPTION	REF.	PART NO.	DESCRIPTION	REF.	PART NO.	DESCRIPTION
1	1216622	Bushing	17	1205001	Support Arm	33		Cotter Pin
2	1216221	V-Pulley 16 O. D. x B15.4(Double)	18	1203309	Hinge Bracket	34	1216861	2 HP 36 Electric Motor
3	0006004	1" Lock Collar	19	1204445	Motor Mount Bracket		1216862	2 HP 16 Electric Motor
4	1204875	Level Auger Left End Bracket	20	0018149	3/8-16 Lock Nut	35	1204439	Hopper End Panel
5	1204440	Level Auger Bearing Bracket Plate	21		5/16-18 x 1-3/4" HHCS	36	1201007	Level Switch Panel Assembly
6	1203803	Level Auger Hopper Bearing Brace	22		5/16-18 x 1-1/2" HHCS	37	0016009	1" Bearing Stamping
7	1200010	Level Auger Weldment	23		5/16-18 Locknut	38	0016008	1" Bearing
8	1200012	Level Auger Cross Bridge Weldment	24		1/2-13 Hex Nut	39	1216223	Pulley (For 36 Motor)
9	1204876	L. A. Center Bearing Shield	25		1/2" Flat Washer		1216220	Pulley (For 16 Motor)
10	1200016	L. A. Center Bearing Hanger Weldment	26	1205002	1/2-13 x 3-1/2" HHCS	40		5/16-18 x 3/4" HHCS
11	1206001	Hanger Bearing #RX1-16	27		Motor Mount Hinge Pin	41		5/16" Hex Nut
12	1205039	Bolt End Shaft	28		1/2" Lock Washer	42		5/16" Lock Washer
13	1200017	Level Auger Hopper Weldment	29		3/8-16 x 3/4 HHCS	43		5/16" Flat Washer
14	1204774	Level Auger Right End Panel	30		3/8" Hex Nut	44	1210233	Level Auger Weldment
15	1216102	V-Belt 5L590 (2)	31		3/8" Lock Washer	45		1 1/4 x 1 1/4 x 3/8 Key
16	1214483	Motor Mount	32		3/8" Flat Washer	46	1203310	Hopper Brace



**MAIN DRIVE ASSEMBLY
MODEL 900B**

REF.	PART NO.	DESCRIPTION	REF.	PART NO.	DESCRIPTION	REF.	PART NO.	DESCRIPTION
1	1216403	Idler Sprocket 3/4" Bore	47	123322	Motor Base	70	1216111	Belt 3L510
2	1210079	Chain Idler Weldment	48	1210078	Jackshaft Base Weldment - Left Hand	71	1210059	Rear Idler Shaft
3	1213426	Idler Sprocket Holder	49	1210078	3/16-18 x 2-1/2" RHCS	72	1213321	Feed Roll Retainer
4	1210030	Matched Dog Weldment	50	1210078	3/16-18 Hex Nut	73	1212959	Grain Seal
5	1210029	Solenoid Weight Weldment	51	1210078	1/2" Lock Washer	74	1212959	3/8-16 x 1-3/4" RHCS
6	1216434	Solenoid	52	1215572	1/2" Eccentric Arm Weldment	75	1210222	Concer Feed Roll Mount Weldment
7	1210036	Matched Guide Arm Weldment	53	1210036	Eccentric Arm Weldment	76	1210002	Slide Auger Bearing
8	1218996	3/16" I.D. Rubber Grommet	54	1210036	1" Bronze Bushing	77	1218996	Collar Key
9	1215571	Matched Dog Bushing	55	1215680	3/8-16 x 2-1/4" Carriage Bolt	78	1218996	1/2" Lock Collar
10	1218996	Matched Wheel	56	1215680	3/8" Flat Washer	79	1218996	Shear Flange 45 1-1/4" Bore
11	0018011	3/7/16" Flange Block Bearing	57	1210097	Model 900 Front Fan Weldment	80	1218996	Shear Flange 45 1-1/4" Bore
12	1210097	See Part 13 - Chain Tightener	58	1210097	Model 900 Front Fan Weldment	81	1218996	Shear Flange 45 1-1/4" Bore
13	1210097	See Part 12 - Chain Key	59	1210038	Solenoid Cover Weldment	82	1218996	Shear Flange 45 1-1/4" Bore
14	1210211	1-7/16" O.D. Pulley Bushing	60	1210038	Lower Front Fan Guard Hanger	83	1210038	Side Upper Front Section
15	0013521	Bearing Mount Adjusting Bar	61	1210038	Model 900 Front Fan Shaft	84	1210038	Side Upper Front Section
16	1215070	Jackshaft	62	1210038	Model 900 Front Fan Shaft	85	1210038	Side Upper Front Section
17	1210080	Jackshaft	63	1210038	Model 900 Front Fan Shaft	86	1210038	Side Upper Front Section
18	1210203	P.T.O. Mounting Bracket	64	1210038	Model 900 Front Fan Shaft	87	1210038	Side Upper Front Section
19	0017650	Shear Flange	65	0018998	Model 900 Key 3/8" x 1-1/4"	88	1218996	3D-40 Chain 42" Lg.
20	0018250	Shear Ring	66	1210098	Model 900 Key 3/8" x 1-1/4"	89	0018013	Front Bearing (Outer)
21	1216109	BE Models - Matched set of 5 V-Belts	67	1216109	Model 900 Key 3/8" x 1-1/4"	90	1210218	Variable Drive Arm Assembly
22	1216110	BE Models - Matched set of 5 V-Belts	68	1216110	Model 900 Key 3/8" x 1-1/4"	91	1210218	Flange Stiffener
23	1216111	Q.D. Bushing 1-7/16" Bore	69	1216111	Model 900 Key 3/8" x 1-1/4"	92	1210218	Concer Section Slip-Auger
24	1216111	Q.D. Bushing 1-7/16" Bore	70	1216111	Model 900 Key 3/8" x 1-1/4"	93	1210218	Concer Section Slip-Auger
25	1216111	Q.D. Bushing 1-7/16" Bore	71	1216111	Model 900 Key 3/8" x 1-1/4"			
26	1216111	Q.D. Bushing 1-7/16" Bore	72	1216111	Model 900 Key 3/8" x 1-1/4"			
27	1216111	Q.D. Bushing 1-7/16" Bore	73	1216111	Model 900 Key 3/8" x 1-1/4"			
28	1216111	Q.D. Bushing 1-7/16" Bore	74	1216111	Model 900 Key 3/8" x 1-1/4"			
29	1216111	Q.D. Bushing 1-7/16" Bore	75	1216111	Model 900 Key 3/8" x 1-1/4"			
30	1216111	Q.D. Bushing 1-7/16" Bore	76	1216111	Model 900 Key 3/8" x 1-1/4"			
31	1216111	Q.D. Bushing 1-7/16" Bore	77	1216111	Model 900 Key 3/8" x 1-1/4"			
32	1216111	Q.D. Bushing 1-7/16" Bore	78	1216111	Model 900 Key 3/8" x 1-1/4"			
33	1216111	Q.D. Bushing 1-7/16" Bore	79	1216111	Model 900 Key 3/8" x 1-1/4"			
34	1216111	Q.D. Bushing 1-7/16" Bore	80	1216111	Model 900 Key 3/8" x 1-1/4"			
35	1216111	Q.D. Bushing 1-7/16" Bore	81	1216111	Model 900 Key 3/8" x 1-1/4"			
36	1216111	Q.D. Bushing 1-7/16" Bore	82	1216111	Model 900 Key 3/8" x 1-1/4"			
37	1216111	Q.D. Bushing 1-7/16" Bore	83	1216111	Model 900 Key 3/8" x 1-1/4"			
38	1216111	Q.D. Bushing 1-7/16" Bore	84	1216111	Model 900 Key 3/8" x 1-1/4"			
39	1216111	Q.D. Bushing 1-7/16" Bore	85	1216111	Model 900 Key 3/8" x 1-1/4"			
40	1216111	Q.D. Bushing 1-7/16" Bore	86	1216111	Model 900 Key 3/8" x 1-1/4"			
41	1216111	Q.D. Bushing 1-7/16" Bore	87	1216111	Model 900 Key 3/8" x 1-1/4"			
42	1216111	Q.D. Bushing 1-7/16" Bore	88	1216111	Model 900 Key 3/8" x 1-1/4"			
43	1216111	Q.D. Bushing 1-7/16" Bore	89	1216111	Model 900 Key 3/8" x 1-1/4"			
44	1216111	Q.D. Bushing 1-7/16" Bore	90	1216111	Model 900 Key 3/8" x 1-1/4"			
45	1216111	Q.D. Bushing 1-7/16" Bore	91	1216111	Model 900 Key 3/8" x 1-1/4"			
46	1216111	Q.D. Bushing 1-7/16" Bore	92	1216111	Model 900 Key 3/8" x 1-1/4"			
47	1216111	Q.D. Bushing 1-7/16" Bore	93	1216111	Model 900 Key 3/8" x 1-1/4"			